



- SPECIFICATIONS CUB CART

Item Number: 8449
Load Capacity: 400 lbs.
Load Size: 7 Cubic Feet
Overall Dimensions: 50"L x 28"W x 29"H
Overall Weight: 30 lbs.
Tub Dimensions: 37"L x 27"W x 16"H
Wheels: 8" Wheels with Pneumatic Tires
Instruction P/N 102964

NOTICE: Once used, this Utility Cart cannot be returned to the store. If you have a warranty claim, please contact Polar Trailer directly:

- ① Customer Service Hrs: 9am to 4pm, Monday —Friday Central Standard Time
- ① Clam Corporation / Polar Trailer
Attn: Customer Service —Warranty Department
12135 Brockton Lane N.
Rogers, MN 55369
- ① Phone: 763-231-4120
- ① Fax: 763-231-4121
- ① Website: www.polartrailer.com
- ① Email: customerservice@clamcorp.com

**** Polar Trailer cannot honor warranty without an original, dated receipt ****

Warranty Information:

Polar Trailer (a division of CLAM Corporation) warrants to the original retail purchaser (not transferable) its product to be free from manufacturers defects for one (1) year from the date of the original purchase. Polar Trailer will replace or repair any part found defective within the one (1) year time frame. All parts must be returned to Polar Trailer. Before returning any parts, you must first contact Polar Trailer to obtain a **RMA (Return Material Authorization)**. All returns must be returned postage-prepaid and include the original cash register receipt (date and purchase price).

To obtain a return authorization, please use one of the following methods:

- **Call:** 763-231-4120
- **Write:** Clam Corporation/Polar Trailer
Attn: Customer Service —Returns
12135 Brockton Lane N.
Rogers, MN 55369
- **Email:** CustomerService@ClamCorp.com

Information needed: Full name, mailing address, phone number, copy of original receipt, product purchased, and pictures clearly showing the issue(s) if you have them.

Note: Please write the return authorization number on the outside of the package to help ensure the transaction gets processed swiftly and accurately.

-Warranty Information continued next page-

Warranty Information Continued:

The warranty does not apply to any Polar Trailer product which has been subjected to an accident, improper installation, modification, adjustment, repair, misuse, misapplication, fire, theft, loss, neglect, including but not limited to improper maintenance, or use or unauthorized parts or attachments.

Limitation of Liability

It is expressly understood that Polar Trailer's liability for its products, whether due to breach of warranty, negligence, strict liability, or otherwise, is limited to the repair of the product as stated above. Polar Trailer is not liable for any injury, loss, damage, or expense, whether direct or consequential, including but not limited to loss of use, income, profit, or damage to material arising in connection with the sale, installation, use of, inability to use, or the repair or replacement of Polar Trailer products. Polar Trailer reserves the right to make alterations or modifications in its products at any time, which may improve the performance and efficiency of the product. It shall not be obligated to make such alterations or modifications to products already in service.

WARNING:

- **THIS PRODUCT IS INTENDED FOR USE IN LAWN CARE AND HOME APPLICATIONS.**
- **DO NOT TOW BEHIND A VEHICLE OR USE ON A HIGHWAY OR IN ANY HIGH SPEED APPLICATION.**
- **THIS PRODUCT HAS BEEN DESIGNED FOR OFF-ROAD USE ONLY.**

Transporting Loads Safely

- Stopping distance increases with speed and weight of load. Travel slowly and allow extra time and distance to stop.
- Excessive load can cause loss of traction and loss of control on slopes. Reduce payload weight when operating on slopes.
- Never allow children or others in or on equipment.
- Do not attach the Utility Cart to any powered vehicle.
- Follow the manufacturer's recommendations for weight limits.
- Do not turn sharply. Use additional caution when turning or operating under adverse surface conditions.

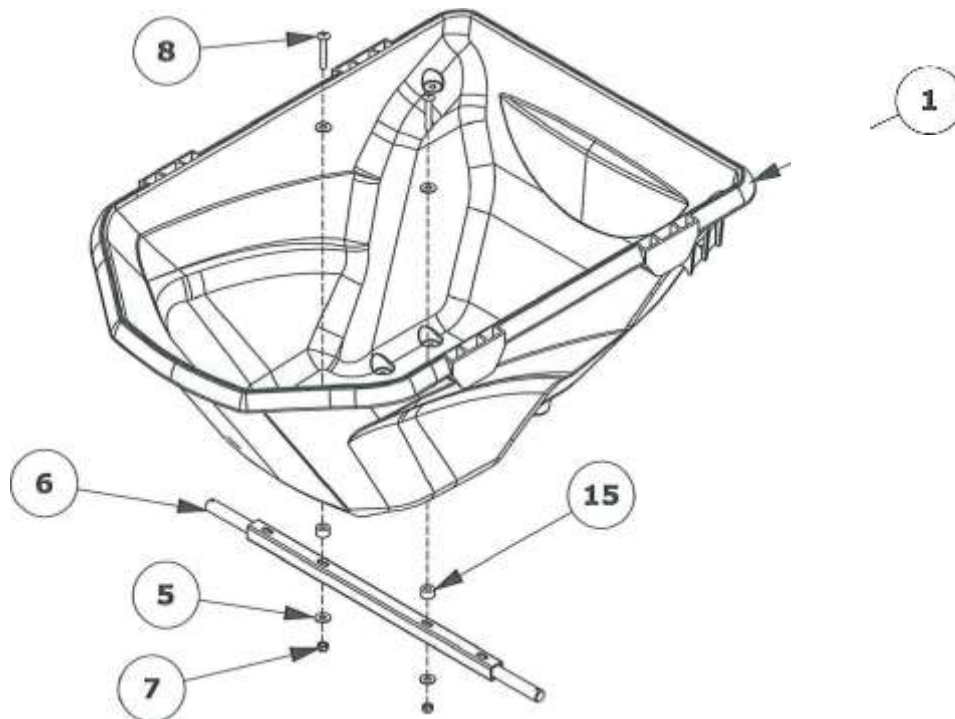
Keep Riders off Utility Cart

- Keep riders off of the Utility Cart.
- Riders are subject to injury, such as being struck by objects or being thrown off the attachment during sudden starts, stops and turns.
- Riders obstruct the operator's view, resulting in the Utility Cart being used in an unsafe manner.

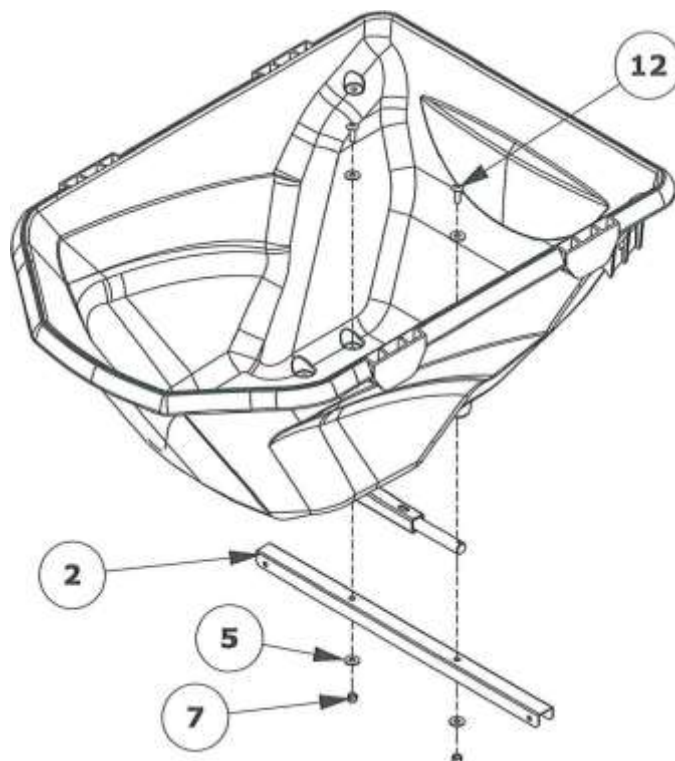
- Replacement Parts

ITEM NO.	PART NUMBER	DESCRIPTION	QTY.
1	102929	TUB, CUB CART	1
2	102944	HANDLE BRACKET	1
3	102934	TIRE & RIM, 8"	2
4	102362	SCREW, 5/16-18 X 3.00	2
5	102035	WASHER, 5/16 WIDE FLAT	12
6	102914	AXLE, 20"	1
7	101899	NUT, 5/16-18 NYLOCK	6
8	102916	SCREW, 5/16-18 X 1.75	2
9	102201	SPRING COTTER PIN	2
10	102607	WASHER, .75	4
11	102915	PLASTIC FLAT TUBE	2
12	101896	BOLT, 5/16-18 X 1.00	2
13	101473	SCREW, 1/ 4-20 X 1.50	4
14	101039	NUT, 1/4-20 NYLOCK	4
15	102962	PLASTIC WASHER, 5/16"	2
16	102957	BOTTOM HANDLE	2
17	102958	TOP HANDLE	1
18	102964	INSTRUCTION, CUB CART	1

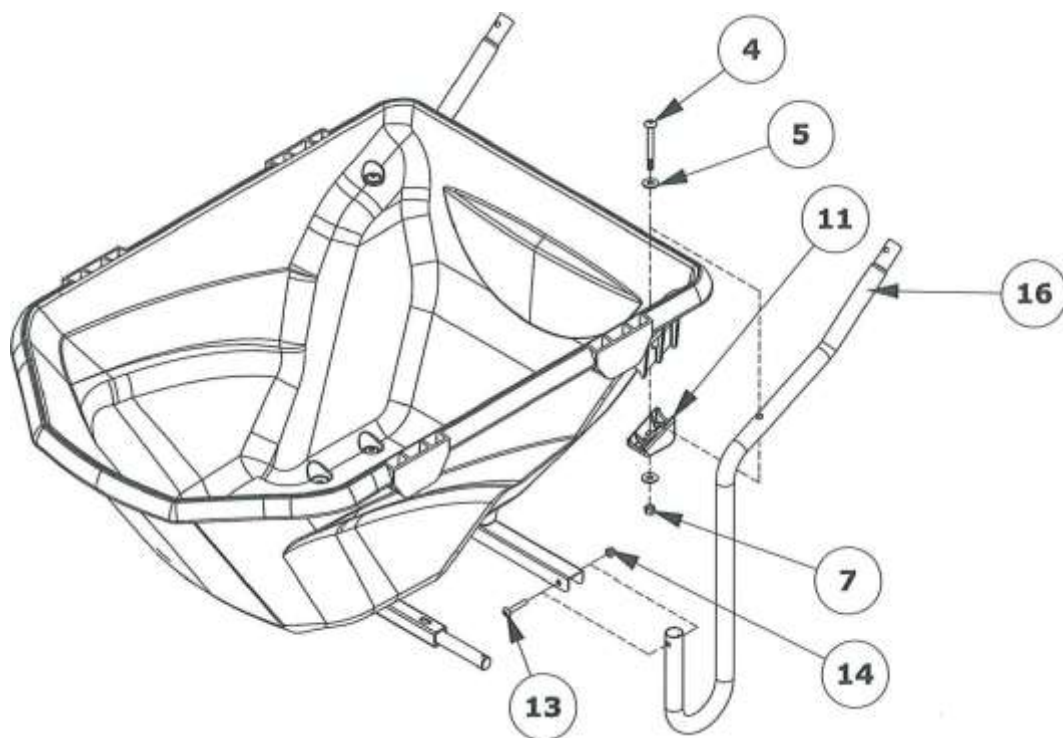
STEP ONE



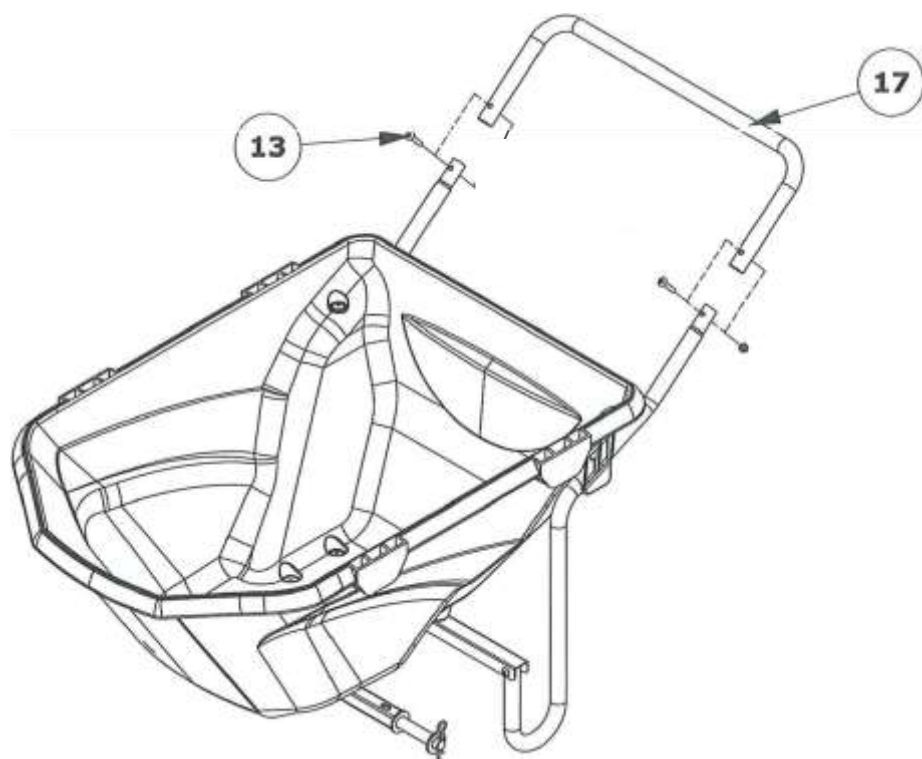
STEP TWO



STEP THREE



STEP FOUR



STEP FIVE

