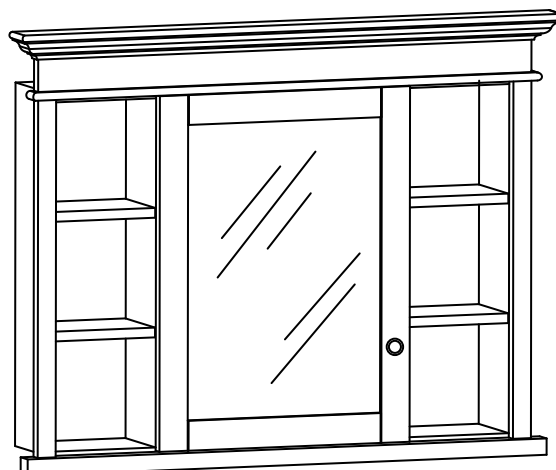


DA4032MC

DA4032MC-NB

Nominal Dimension:40W*6.6D*32H inches

- Durable solid popular wood frame
- Anti-fog glass
- 1 soft-close door
- Recess mount installation
- 4 wood shelves outside
- 3 adjustable glass shelves inside
- Metal alloy hardware with decorative porcelain
- Austria BLUM soft-close hinges system



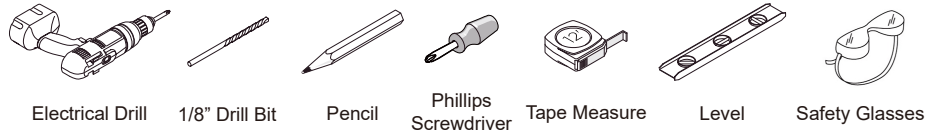
Technical drawing of the front elevation of a cabinet. The overall dimensions are 1016(40.0") wide and 813(32.0") high. The cabinet features a central glass-paned door with a width of 474(18.7") and a height of 658(25.9"). The door is divided into four horizontal sections, each 154(6.0") high. The top and bottom sections are solid, while the middle two sections are glass-paned. The side panels are 188(7.4") wide and 184(7.2") high. The top and bottom panels are 202(8.0") high. The overall height of the cabinet is 813(32.0").

Technical drawing of a rectangular frame. The overall dimensions are 1016(40.0") in width and 813(32.0") in height. The inner frame has a width of 971(38.2"). The drawing shows a central rectangular area divided into a 3x3 grid by dashed lines. The outer frame is composed of solid lines, and the inner frame is composed of dashed lines.

MIRROR CABINET INSTALLATION

DA4032MC

SUGGESTED TOOLS AND MATERIALS:



INSTALLATION INSTRUCTLONS

We recommend consulting a professional if you are unfamiliar with installing bathroom fixtures and plumbing .We accept accepts no liability for any damage to the floor,medicine cabinet, vanity cabinet, sink,counter top,or personal injury during installation.

PART LIST:



NOTE: Determine overall mirror dimensions before installation.
Requires two(2) person in installation.

Accessories and parts may vary from the picture above.Depends on the product model and size.

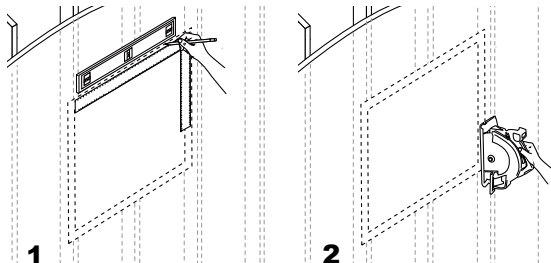
Recess Mount Installation

1 PREPARING THE INSTALLATION LOCATION



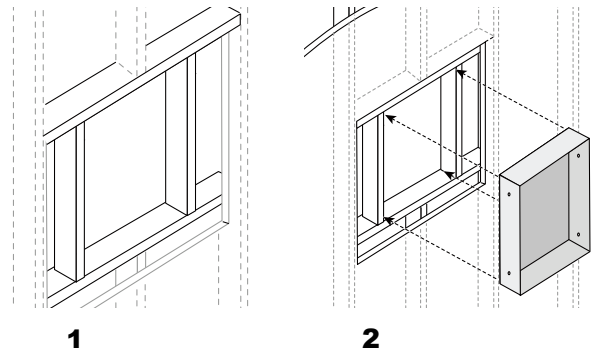
NOTE: Before installing, make sure all parts are present. Compare parts with the Hardware included list. If any part is missing or damaged,do not attempt to install the product.

- Determine placement and mark an opening 1/2 in. taller and wider than the cabinet (1).
- Cut along the center of the wall studs (2).



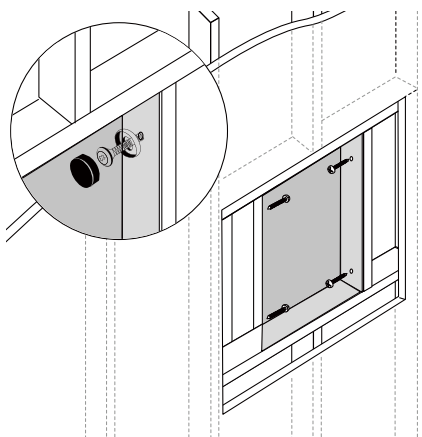
2 INSTALLING THE CABINET

- Secure the sill plate and header with nails (1).
- Insert the cabinet into the opening (2).



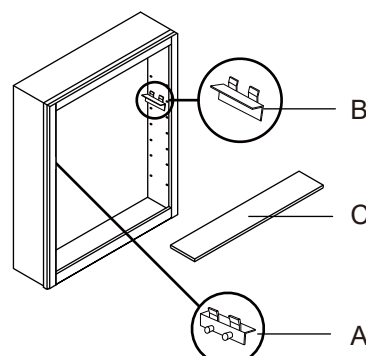
3 SECURING THE CABINET TO THE WALL

- Secure the cabinet to the wall through the sides with screws.



4 INSTALLING THE SHELVES

- Insert the shelf clips (A) into the holes on the left side of the cabinet. Repeat on the right side (B).
- Rest the glass shelves(C) on the shelf clips(A&B), then simultaneously press downward on both ends to securely fit the glass shelf into the shelf clips.



* No need to take off the door(s) before adjusting cabinet shelves.