



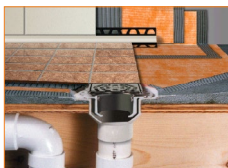
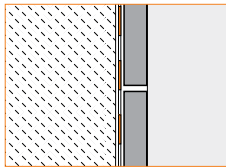
INNOVATIVE SOLUTIONS FOR CERAMIC AND STONE TILE

INTEGRATED BONDED WATERPROOFING SYSTEM FOR TILED SHOWERS

The Schluter®-Shower System is an integrated family of products that together form a fully bonded, watertight assembly for tiled showers. Unlike shower pan liners in conventional assemblies, bonded waterproof membranes, such as Schluter®-KERDI, bond directly to the mortar bed and protect it from becoming saturated with regular use. In addition, the KERDI membrane or Schluter®-KERDI-BOARD waterproof building panel protects wall cavities from vapor penetration. The Schluter®-KERDI-DRAIN, Schluter®-KERDI-DRAIN-H, Schluter®-KERDI-LINE, and Schluter®-KERDI-LINE-VARIO shower drains provide a simple and secure connection to the KERDI membrane at the top of the assembly. Other components include the Schluter®-KERDI-SEAL-PS/-MV prefabricated seals and the Schluter®-KERDI-FIX adhesive/sealant, used to treat protrusions through the membrane, and the Schluter®-KERDI-SHOWER and Schluter®-KERDI-BOARD prefabricated substrates, which can reduce weight and installation time. The integrated Schluter®-Shower System eliminates leaks, reduces the potential for efflorescence and mold growth in the system, and dramatically reduces total installation time to ensure success and make shower installation easier than ever.



8.1 Schluter®-KERDI



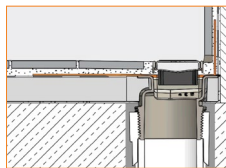
8.2 Schluter®-KERDI-DRAIN



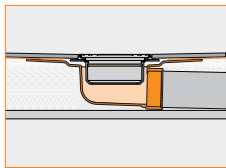
8.7 Schluter®-KERDI-LINE



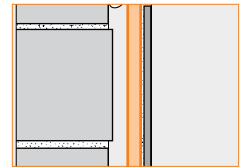
8.8 Schluter®-KERDI-LINE-VARIO



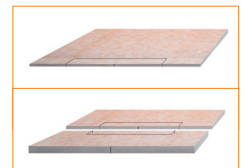
8.2 Schluter®-KERDI-DRAIN-H



12.1 Schluter®-KERDI-BOARD



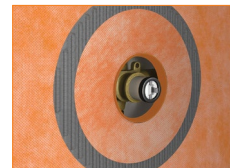
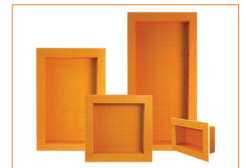
8.3 Schluter®-KERDI-SHOWER-T/-TS/-TT



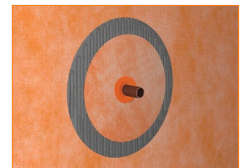
8.8 Schluter®-KERDI-SHOWER-LT/-LTS



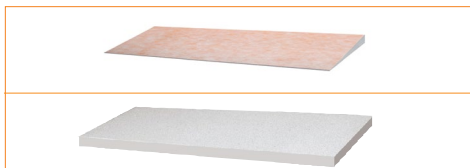
12.1 Schluter®-KERDI-BOARD
-SB/-SC/-SN/-SNLT



8.1 Schluter®-KERDI-SEAL-PS/-MV



17.1 Schluter®-SHELF-E/-W/-N



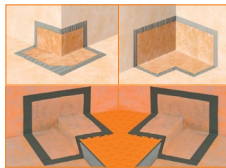
8.3 Schluter®-KERDI-SHOWER
-R/-CB



14.1 Schluter®-SHOWERPROFILE
-W/-WSK



8.1 Schluter®-KERDI-BAND/
-KERECK/-KERS



14.1 Schluter®-SHOWERPROFILE-S/-R



Prefabricated Shower Substrates



8.3 Schluter®-KERDI-SHOWER-T/TS/TT



8.3 Schluter®-KERDI-SHOWER-R/CB



8.8 Schluter®-KERDI-SHOWER-LT/LTS



12.1 Schluter®-KERDI-BOARD-SB/SC



12.1 Schluter®-KERDI-BOARD-SN/SNLT



Schluter®-KERDI-BOARD-KIT

Schluter® prefabricated shower substrates provide an alternative to shower bases constructed of mortar and other shower elements constructed of framing and solid backing. The shower tray, curb, ramp, bench, and niche are especially useful in large-scale, repetitive jobs, such as hotels, apartments, and condominiums for the significant time savings that can be realized.

8.3 Schluter®-KERDI-SHOWER-T/TS/TT/LT/LTS

Property	Method	Value
Density	ASTM D1622	3.75 lb/ft ³ (60 Kg/m ³)
Compressive Strength ¹	ASTM D1621	80 psi (552 kPa)
Maximum Service Temperature	-	175 °F (79 °C)

¹ Compressive strength measured at 10% deflection of foam

8.3 Schluter®-KERDI-SHOWER-R

Property	Method	Value
Density	ASTM D3575	3.75 lb/ft ³ (60 Kg/m ³)
Maximum Service Temperature	-	175 °F (79 °C)

8.3 Schluter®-KERDI-SHOWER-CB

Property	Method	Value
Density	ASTM D1622	2.70 lb/ft ³ (43 Kg/m ³)
Compressive Strength ¹	ASTM D1621	48 psi (331 kPa)
Maximum Service Temperature	-	170 °F (77 °C)

¹ Compressive strength measured at 10% deflection of foam

Application and Function

8.3 Schluter®-KERDI-SHOWER-T/TS/TT

are sloped shower trays with integrated KERDI waterproofing. The trays are made of lightweight, expanded polystyrene for constructing mortar-free shower bases. Each of these shower trays are designed to integrate with Schluter®-KERDI-DRAIN. The trays include a KERDI collar for completing the waterproofing to the Schluter®-KERDI-DRAIN bonding flange.

KERDI-SHOWER-T is a standard tray with center drain placement available in 38" x 60" (97 x 152 cm), 48" x 60" (122 x 152 cm), 48" x 72" (122 x 183 cm), 60" x 60" (152 x 152 cm), and 72" x 72" (183 x 183 cm) sizes.

KERDI-SHOWER-TS is the standard tray with off-center drain placement available in a 38" x 60" (97 x 152 cm) size.

KERDI-SHOWER-TT features a thin perimeter height that simplifies construction of curbless showers. The tray is available in 32" x 38" (81 x 97 cm), 36" x 48" (91 x 122 cm), 36" x 36" (91 x 91 cm), 38" x 38" (97 x 97 cm), and 48" x 48" (122 x 122 cm) and neo-angle 38" x 38" (97 x 97 cm) sizes.

8.3 Schluter®-KERDI-SHOWER-R is a lightweight, expanded polystyrene shower ramp with integrated Schluter®-KERDI waterproofing designed to facilitate the construction of access ramps for tiled showers. The ramp integrates with the Schluter®-Shower System to create accessible, curbless showers and adheres to the ADA's slope ratio. Ramp dimensions are 48" x 12" x 1-1/4" (122 x 30.5 x 3.2 cm).

8.8 Schluter®-KERDI-SHOWER-LT/LTS

are polystyrene sloped trays with integrated Schluter®-KERDI waterproofing. Each of these prefabricated shower trays is designed to integrate with the Schluter®-KERDI-LINE.

KERDI-SHOWER-LT allows for the installation of a center drain and is available in 39" x 39" (100

x 100 cm), 48" x 48" (122 x 122 cm) and 55" x 55" (140 x 140 cm) sizes.

KERDI-SHOWER-LTS accommodates the installation of the drain along the perimeter of the shower and is available in 39" x 39" (100 x 100 cm), 48" x 48" (122 x 122 cm) and 55" x 55" (140 x 140 cm), 36" x 55" (91 x 140 cm), 36" x 72" (91 x 183 cm), 38" x 76" (97 x 193 cm) and 76" x 38" (193 x 97 cm) sizes.

Schluter®-KERDI-SHOWER-CB is a height compensation board made of lightweight expanded polystyrene. Two versions are available:

The 1" (2.5 cm)-thick compensation board is used to accommodate the adaptor ring height when installing the KERDI-DRAIN-A or KERDI-LINE-A adaptors in conjunction with the KERDI-SHOWER prefabricated shower trays.

The 3-1/2" (8.9 cm)-thick compensation board is used to accommodate the drain body and waste pipe height, when installing the KERDI-DRAIN-H in conjunction with the KERDI-SHOWER-T/TS/TT shower trays.

The compensation board can easily be cut to size to fit around the drain and waste pipe in KERDI-DRAIN-A applications or the adaptor ring in KERDI-DRAIN-H or KERDI-LINE-A applications. Multiple boards can be used to fit the size and shape of the shower.

12.1 Schluter®-KERDI-BOARD-SB/SC are prefabricated substrates, made of Schluter®-KERDI-BOARD, which integrate with the Schluter®-Shower System. The substrates are waterproof and ready for tile, leaving only sealing of joints and corners to complete waterproofing. The KERDI-BOARD-SB shower bench is available in triangular and rectangular configurations in the followings sizes (width x depth x height). The triangular benches are 16" x 16" x 20" (41 x 41 x 51 cm) and 24" x 24" x 20" (61 x 61 x 51 cm). Rectangular benches are 38" x 11-1/2" x 20" (97 x 29 x 51 cm) and 48" x 16"



x 20" (122 x 41 x 51 cm). The KERDI-BOARD-SC shower curb can be used in conjunction with any shower base. Curb dimensions are 38" x 6" x 4-1/2" (97 x 15 x 11.5 cm), 48" x 6" x 4-1/2" (122 x 15 x 11.5 cm), and 60" x 6" x 4-1/2" (152 x 15 x 11.5 cm).

12.1 Schluter®-KERDI-BOARD-SN is a prefabricated shower niche made of KERDI-BOARD that can be installed in both KERDI and KERDI-BOARD wall assemblies. The shower niche features a 1/2" (12.5 mm) -thick by 2" (50 mm) -wide integrated bonding flange and is available in 12" x 6" (30 x 15 cm), 12" x 12" (30 x 30 cm), 12" x 20" (30 x 51 cm), and 12" x 28" (30 x 71 cm) sizes. All KERDI-BOARD-SN niches include screws and washers, as well as a pre-cut KERDI-BAND frame for waterproofing the transition of the niche to the adjacent wall.

Schluter®-KERDI-BOARD-SNLT is a prefabricated shower niche made of KERDI-BOARD that incorporates a profile with a diffused LED light strip. See the Schluter®-KERDI-BOARD-SNLT Shower Niche with LIPROTEC LED Lighting technical data sheet for more product and warranty information.

Schluter®-KERDI-BOARD-KIT combines all of the necessary components to waterproof the walls of your bathtub and acrylic shower base using waterproof building panels. The kit includes 1/2" x 48" x 38" (1.25 cm x 122 cm x 97 cm) KERDI-BOARD waterproofing panels, KERDI-BAND, pipe and mixing valve seals, screws and washers, plus 9.81 fl oz (290 ml) of KERDI-FIX sealant in bright white. The KERDI-BOARD-KIT provides enough KERDI-BOARD to cover up to 101 ft² (9.4 m²) of wall area.

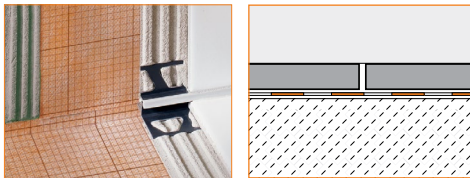
Material Properties and Areas of Application

KERDI-SHOWER-T/-TS/-TT/-LT/-LTS/-R prefabricated substrates are manufactured using lightweight expanded polystyrene. The products require no special disposal and can be recycled. No CFCs or HCFCs are present in either the products or in the manufacturing process. The polystyrene foam trays and the shower ramp each have a density of 3.75 lb/ft³ (60 kg/m³) with an 80 PSI (552 kPa) compressive strength at 10% deformation. It is serviceable in temperatures up to 175°F (79°C). The expanded polystyrene used to manufacture KERDI-SHOWER-T/-TS/-TT/-LT/-LTS/-R is treated with a flame retarding agent. Expanded polystyrene should not be exposed to hydrocarbons, esters, amines, and aldehydes. All will deteriorate foam. Exposure to ultraviolet rays (sunlight) for long periods of time will result in partial degradation (dusting) at the surface.

KERDI-BOARD-SB/-SC prefabricated substrates are manufactured using KERDI-BOARD, made from extruded polystyrene foam, with a cement-free reinforcement layer laminated to both sides with an anchoring fleece webbing. The surface

features printed gridlines consisting of 3/8" x 3/8" (10 x 10 mm) squares for precise cutting. KERDI-BOARD is waterproof and vapor-retardant and can withstand all chemical stresses that typically occur in conjunction with ceramic tile coverings. KERDI-BOARD will not warp, rot, or decay. It is serviceable in temperatures up to 158°F (70 °C).

Waterproofing Membrane



8.1 Schluter®-KERDI

Since traditional shower pan liners are placed below the mortar setting bed in conventional assemblies, moisture is allowed to saturate the mortar bed. This can increase the risk of leakage, cause efflorescence, and foster mold growth. Bonded waterproof membranes, such as KERDI, are set on top of the mortar bed and protect it from becoming saturated, thus eliminating the problems associated with traditional systems.

Application and Function

8.1 Schluter®-KERDI is a pliable, sheet-applied, bonded waterproof membrane and vapor retarder with limited crack-bridging capabilities. It is made of soft polyethylene, which is covered on both sides with a special fleece webbing to anchor the membrane in the thin-set mortar. Tiles can be installed directly on the KERDI membrane using the thin-bed method. Other trowel-applied covering materials, such as plaster, can also be used. **Schluter®-KERDI-DS** is a bonded waterproof membrane and vapor retarder with very low water vapor permeance for use in continuous use steam rooms and similar applications.

Various KERDI waterproofing accessories are available. Preformed, seamless corners include the following. KERDI-KERECK-F are used to seal 90° inside and outside corners. KERDI-KERS-B are used to seal 135° corners at triangular shower benches and neo-angle shower curbs. KERDI-KERS are used to seal floor/wall/shower base connections in curbless shower applications where the KERDI-LINE linear drain is installed adjacent to the wall. KERDI-SEAL-PS/-MV are prefabricated sections of KERDI with overmolded rubber gaskets that are used to seal pipe protrusions through the KERDI waterproofing membrane (e.g., at showerheads and tub spouts) and protect moisture-sensitive backing panels at the mixing valve. Use KERDI-BAND, in widths of 5" (12.5 cm), 7-1/4" (18.5 cm), or 10" (25 cm), to seal butt joints or corner joints. KERDI-FLEX, in 5" (12.5 cm) or 10" (25 cm) widths, is used to seal expansion joints or flexible edge joints.

Material Properties and Areas of Application

KERDI features a modified polyethylene (PEVA) core with non-woven polypropylene on both sides. KERDI-DS features a high-density polyethylene (HDPE) core with non-woven polypropylene on both sides. KERDI is 8-mil thick and has a water vapor permeance of 0.90 perms, when tested according to ASTM E96, using Procedure E at 90% relative humidity. KERDI-DS is 20-mil thick and features additives to produce a water vapor permeance of 0.18 perms.

KERDI and KERDI-DS are waterproof and resistant to most chemicals commonly encountered in tiled environments. They are resistant to aging and will not rot. KERDI and KERDI-DS are highly resistant to saline solutions, acid and alkaline solutions, many organic solvents, alcohols, and oils. Information regarding their resistance to specific substances can be provided if concentration, temperature, and duration of exposure are known. For acid-resistant coverings, use an epoxy adhesive to set and grout the tile.

KERDI and KERDI-DS are used on wall and floor surfaces where protection against the penetration of moisture or other harmful substances is necessary. KERDI is suitable for showers, intermittent use steam showers, tub surrounds, and areas surrounding swimming pools. Industrial applications include the food industry, breweries, and dairies. KERDI-DS is suitable for use in continuous use steam rooms and other applications with similar vapor management requirements.

KERDI and KERDI-DS meet the American National Standard for Load Bearing, Bonded, Waterproof Membranes for Thin-Set Ceramic Tile and Dimension Stone Installations (ANSI A118.10-S). The membranes are listed by cUPC® and evaluated by ICC-ES (Report Nos. ESR-2467 and PMG-1204). For copies of these documents, please contact Schluter®-Systems at 800-472-4588 (USA) or 800-667-8746 (Canada) or by e-mail at info@schluter.com. Links to the documents can also be accessed at www.schluter.com.

KERDI and KERDI-DS have been evaluated according to the "Standard Method for the Testing and Evaluation of Volatile Organic Chemical Emissions from Indoor Sources Using Environmental Chambers, Version 1.1" for California Specification 01350 and found to comply with the VOC requirements. California Specification 01350 is referenced by various green building standards and rating systems.

Waterproof Building Panel



12.1 Schluter®-KERDI-BOARD

The KERDI-BOARD waterproof building panel simplifies shower installation by combining the tile backing and waterproofing installation into a single step. KERDI-BOARD gives tile setters more control over their projects by providing them with the means to simply and easily create ideal substrates for tile. Unsuitable substrates can be remedied and new substrates can be created while keeping the requirements of the tile covering in mind.

Application and Function

12.1 Schluter®-KERDI-BOARD is a multifunctional tile substrate and building panel, which can also be used for creating bonded waterproofing assemblies with tile coverings. It consists of an extruded polystyrene foam panel, with a special reinforcement material on both sides and fleece webbing for effective anchoring in thin-set mortar.

With the available panel thicknesses of 3/16", 3/8", 1/2", 5/8", 3/4", 1", 1-1/2", and 2" (5, 9, 12.5, 15, 19, 25, 38, and 50 mm), KERDI-BOARD covers a broad range of application areas for creating flat, level, plumb, square, and dimensionally stable substrates for the installation of ceramic and natural stone tiles. With suitable preparation of the abutting seams and joint areas, the panel may be used for bonded waterproofing assemblies.

KERDI-BOARD is suitable for: creating tile substrates on masonry walls, wood or metal framing, and other finished wall surfaces; creating straight or curved partition walls; creating straight or curved bathtub and shower surrounds; concealing pipes and columns; as well as creating bathtub platforms, vanities, storage shelves, countertops, and various other bathroom structures.

The boards are simply cut to size with a utility knife. The gridlines, which are printed on the surface, are helpful for neat and quick cuts and installation. KERDI-BOARD can be fully adhered in wall areas or spot-bonded with thin-set mortar. If necessary, the material may be secured with additional wall anchors. In the case of stud framing, KERDI-BOARD is attached with screws and washers from the matching hardware system. Tiles can be installed directly over KERDI-BOARD using the thin-set method.

L-shaped and U-shaped KERDI-BOARD panels are available for creating pipe and column

12.1 Schluter®-KERDI-BOARD

Property	Method	Value
Water vapor permeance	ASTM E96 ¹	0.36 perms - 1/2" (12.5 mm) R 9.1 - 2" (50 mm)
Thermal resistance (R-value)	ASTM C518	R 2.2 - 1/2" (12.5 mm) R 0.9 - 3/16" (5 mm)
Service temperature range		-58°F to 158°F (-50°C to 70°C)
Flame spread/smoke developed	ASTM E84	Pass ²
Thermal barrier evaluation	NFPA 286	Pass ^{2,3}

¹ Using the desiccant method at 100°F (38°C) and 90% RH

² Per International Building Code Requirements

³ Porcelain tile used as thermal barrier over 1/2" (12.5 mm) -thick KERDI-BOARD on wood framing

coverings, and grooved panels are available for creating curved elements. Schluter®-Systems also offers profiles and attachment hardware for wall connections and finishing edges, as well as matching wall anchors and screws.

Material Properties and Areas of Application

KERDI-BOARD is made from extruded polystyrene foam, with a cement-free reinforcement layer laminated to both sides and an anchoring fleece webbing. The surface of the board has gridlines consisting of 3/8" x 3/8" (10 x 10 mm) squares printed on one side.

KERDI-BOARD is waterproof and vapor retardant and can withstand all chemical stresses that typically occur in conjunction with ceramic tile coverings. KERDI-BOARD may be used in bonded waterproofing assemblies where required. KERDI-BOARD is completely flat and will not warp, even with one-sided exposure to temperature and moisture fluctuations. It will not rot or decay. KERDI-BOARD can be used in a multitude of different application areas. In special cases, the suitability of the material must be verified based on the anticipated chemical and mechanical stresses. The information provided below is intended as general guidelines.

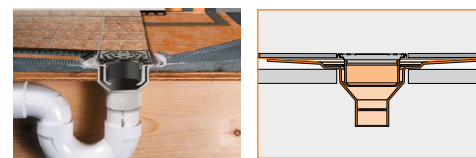
Structures on which KERDI-BOARD is to be installed must be stable and meet any other project-specific requirements. Select a suitable material thickness if using KERDI-BOARD for the construction of freestanding partition walls, shelving, or similar structures, and use reinforcement profiles as necessary. Arrange supports made of KERDI-BOARD at regular intervals consistent with conventional building practices. Select the material thickness and installation method depending on the evenness of the substrate. KERDI-BOARD can be spot-bonded to walls to correct substrate variations or fully embedded in thin-set mortar where walls are sufficiently even and plumb.

Maintenance

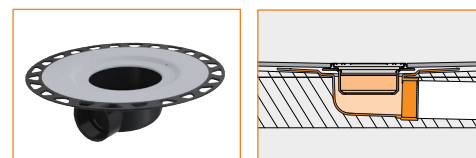
Storage

KERDI-BOARD should be stored flat. In case of outdoor storage, protect the material from direct sunlight and weather exposure.

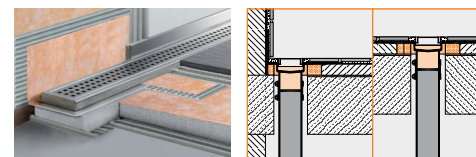
Shower Drains



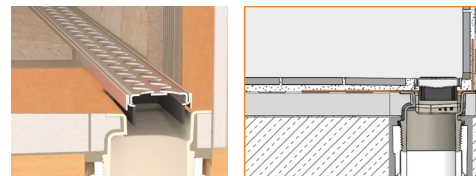
8.2 Schluter®-KERDI-DRAIN



Schluter®-KERDI-DRAIN-H



8.7 Schluter®-KERDI-LINE



8.8 Schluter®-KERDI-LINE-VARIO

Conventional two-stage drains are designed to connect to shower pan liners below the mortar bed and do not allow a secure, watertight connection to bonded waterproof membranes at the top of the drain assembly. KERDI-DRAIN, KERDI-DRAIN-H, KERDI-LINE, and KERDI-LINE-VARIO are designed specifically to ensure a simple and secure connection to bonded waterproof membranes, such as KERDI, at the top of the assembly rather than below it, thereby reducing the risk of leakage, efflorescence, and mold growth.

Application and Function

8.2 Schluter®-KERDI-DRAIN is a shower drain specifically designed to allow connections to KERDI or other load-bearing, bonded waterproof membranes. The membrane is adhered to the large integrated bonding flange to form a waterproof connection at the top of the drain



assembly. KERDI-DRAIN consists of a drain body and fully adjustable grate assembly or covering support to which tile is applied. The grate assembly accommodates a wide range of tile thicknesses and allows lateral and tilt adjustment as well. The covering support is placed flush with the top of the bonding flange and can therefore accommodate any thickness tile covering.

The standard KERDI-DRAIN is attached directly to the waste line. The drain body is available in ABS, PVC, or stainless steel. The plastic drain bodies feature a fleece-covered bonding flange. They are available with standard 2" (50 mm) and 3" (75 mm) outlets and attached to the pipe using an appropriate solvent cement. The stainless steel drain bodies are available with standard 2" (50 mm) or 3" (75 mm) no-hub outlets or 2" (50 mm) threaded outlet. The no-hub outlets are attached to the pipe using an appropriate mechanical (e.g., flexible or no-hub) coupling. The threaded outlets are attached to the pipe using thread sealing compound or tape. The simple connection to standard drain outlets makes KERDI-DRAIN suitable for new construction and renovation.

The Schluter®-KERDI-DRAIN-A adaptor kits are designed to convert clamping ring drains to integrated bonding flange drains when removal of the clamping ring drain is not practical (e.g., when they are set in concrete slabs). The adaptor kit includes a steel adaptor ring, available in 5-1/2" (139.7 mm) and 7-1/2" (191 mm) diameter sizes, with an over-molded rubber gasket and a variety of perforated hole patterns that align with most common clamping ring drains. The adaptor ring replaces the clamping ring and is attached to the existing drain body using the clamping ring bolts. This connection is made watertight via the rubber gasket and Schluter®-KERDI-FIX adhesive/sealant. The adaptor drain with integrated bonding flange slides into the adaptor ring with the over-molded rubber gasket ensuring a watertight seal. Adaptor kits are suitable for both mortar beds and KERDI-SHOWER-T/-TS/-TT shower tray applications.

The KERDI-DRAIN grate assembly consists of a frame, which can be seamlessly adjusted to the thickness and layout of the ceramic tile or stone covering via the height adjustment collar and lateral adjustment ring and grates or cleanout covers that are placed within the frame. The 4" (100 mm) standard grate assembly frame features an approximately 1/8" (3 mm) wide reveal after installation and grate/frame combinations are available in stainless steel in CLASSIC design or anodized aluminum in CONTOUR design, both available in a variety of finishes. The 4" (100 mm) KERDI-DRAIN-STYLE grate assembly frame features a minimal reveal after installation. It is made of brushed stainless steel and can be combined with one of three grate design options: FLORAL (E), CURVE (F), or PURE (G). Various metallic and color-coated finishes are available.

The 4" (100 mm) TILE grate is a square stainless steel plate with KERDI laminated on the surface to allow for bonding of ceramic or stone tile, which creates a virtually invisible drainage line. The 6" (150 mm) square and round stainless steel grate assembly frames feature an approximately 3/16" (5 mm) wide reveal after installation and can be combined with stainless steel grates in CLASSIC design or a square cleanout cover. Please note that 6" (150 mm) grate assemblies and grate assemblies used with the 5-1/2" (139.7 mm) adaptor kits only allow vertical and tilt adjustment (no lateral adjustment).

Schluter®-KERDI-DRAIN-H is a shower drain with an integrated bonding flange that provides as large contact area for a secure connection to Schluter®-KERDI waterproof membrane at the top of the assembly. KERDI-DRAIN-H is appropriate for both mortar bed and Schluter®-KERDI-SHOWER-T/-TS/-TT shower tray applications. The bonding flange is sloped to simplify installation of the mortar bed.

KERDI-DRAIN-H provides a horizontal connection to the drain pipe and is available in ABS or PVC with a 2" (50 mm) outlet. It is ideal for applications where the use of a vertical connection to the drain pipe is not possible or practical (e.g., suspended or post-tension concrete floors, basement slabs, or wood floor installations where relocating the hole in the floor is not practical). The horizontal outlet allows the positioning of the drain in the desired area regardless of drain pipe location.

A compensation board is available for use with KERDI-DRAIN-H in conjunction the KERDI-SHOWER-T/-TS/-TT shower trays.

KERDI-DRAIN-H is compatible with the standard KERDI-DRAIN grate options. Please refer to the previous section on KERDI-DRAIN for details.

8.7 Schluter®-KERDI-LINE is a low profile linear shower drain specifically designed for bonded waterproofing assemblies. KERDI-LINE can be installed adjacent to walls or at intermediate locations. The floor can be sloped on a single plane to KERDI-LINE, which enables the use of large-format tiles and creates interesting design opportunities.

KERDI-LINE consists of a formed stainless steel channel body and grate assembly or covering support to which tile is applied.

The channel body features a standard 2" (50 mm) no-hub outlet and is attached to the pipe using an appropriate mechanical (e.g., flexible or no-hub) coupling. The simple connection to standard drain outlets makes KERDI-LINE suitable for new construction and renovation. KERDI-LINE is available with both center and off-set outlets. The off-set outlet is located 8" (20.3 cm) from the edge of the channel body and provides flexibility when obstacles (e.g., floor joists) are encountered during installation. KERDI-

LINE includes a corresponding polystyrene foam channel support to set the drain elevation to the corresponding KERDI-SHOWER-LT/-LTS shower trays. The perimeter of the channel body consists of a bonding flange laminated with a collar made of KERDI. It ensures a simple and secure connection to the bonded waterproofing assembly, both in the floor area and on adjacent walls. KERDI-LINE is available in channel lengths from 20" to 72" (50 cm to 180 cm) in 4" (10 cm) increments. The bonding flange extends approximately 1" (2.5 cm) beyond the channel on all sides.

The KERDI-LINE-A adaptor kit is designed to convert clamping ring drains to accommodate the KERDI-LINE channel body when removal of the clamping ring drain is not practical (e.g., when they are set in concrete slabs). The adaptor kit includes a steel adaptor ring, available in 5-1/2" (139.7 mm) diameter, with an over-molded rubber gasket and a variety of perforated hole patterns that align with most common clamping ring shower drains. The adaptor ring replaces the clamping ring and is attached to the drain body using the clamping ring bolts. This connection is made watertight via the rubber gasket and Schluter®-KERDI-FIX adhesive/sealant. The KERDI-LINE channel body outlet slides into the adaptor ring, with the over-molded rubber gasket ensuring a watertight seal. Adaptor kits are suitable for both mortar beds and KERDI-SHOWER-LT/-LTS shower tray applications.

The KERDI-LINE grate assembly consists of a stainless steel frame that can be seamlessly adjusted to the thickness of the ceramic tile or stone covering – 1/8" to 1" (3 mm to 25 mm) for standard grate assemblies and 1/4" to 23/32" (6 mm to 18 mm) for KERDI-LINE-STYLE grate assemblies – and stainless steel grates that are placed within the frame. The standard grate assembly frame features a 3/8" (10 mm) wide reveal after installation and can be combined with one of two grate options: SOLID (A) or SQUARE (B). Each standard assembly is available in a brushed, chrome, or textured color-coated finish. The SQUARE (B) option is also available with a locking mechanism (brushed stainless steel, 3/4" – 19 mm frame only) for applications where tamper resistance is desired or required (e.g., healthcare and education facilities, etc.). The KERDI-LINE-STYLE grate assembly frame features a minimal reveal after installation and can be combined with one of three grate options: FLORAL (E), CURVE (F), or PURE (G). Each STYLE assembly is available in a brushed finish. The TILE grate (D) consists of a frameless, tileable covering support that is placed flush with the top of the channel body and can therefore accommodate any thickness tile covering. If KERDI-LINE is placed at shower entrance, it is recommended that grate assembly A or the TILE grate is chosen and that the drainage openings span the maximum width of the entrance to limit potential overflow; secondary drainage (e.g., KERDI-DRAIN-F) may be required in the drying area.

8.8 Schluter®-KERDI-LINE-VARIO is a low profile, variable length linear shower drain specifically designed for bonded waterproofing assemblies. KERDI-LINE-VARIO can be initially cut to size onsite to fit the specific dimensions of the shower. The floor can be sloped on a single plane to KERDI-LINE-VARIO, which enables the use of large-format tiles and creates interesting design opportunities. KERDI-LINE-VARIO is best suited for placement against the wall but can also be installed in the center of the shower. For drain placement at the entrance of the shower, please refer to the 8.7 KERDI-LINE linear drain.

KERDI-LINE-VARIO consists of a polypropylene flange, a formed stainless steel channel, a stainless steel grate, and stainless steel end caps for applications involving trimmed lengths.

The KERDI-LINE-VARIO flange comprises an injection molded polypropylene drain body featuring a standard 2" (50 mm) NPT outlet, which attaches to a standard, threaded, mechanical coupling to allow for an adhesive chemical bond to the drainpipe. KERDI-LINE-VARIO is supplied with PVC and ABS couplings. The simple connection makes KERDI-LINE-VARIO suitable for new construction and renovations. The perimeter of the polypropylene flange consists of a bonding flange laminated with a collar made of KERDI. This ensures a simple and secure connection to the bonded waterproofing assembly, both in the floor area and on adjacent walls. The KERDI-LINE-VARIO flange kit contains corresponding polystyrene foam supports to set the drain elevation to the corresponding KERDI-SHOWER-LT/-LTS shower trays.

The KERDI-LINE-VARIO channel features a formed stainless steel design 1-11/16" wide by 3/8" high (43 mm wide by 10 mm high) with a drainage opening cut in the center. The channel comes in lengths of 48" and 96" (122 cm and 244 cm) and is designed to be trimmed to length to ensure a proper fit in custom applications. The flange outlet may be positioned anywhere within the overall trimmed length of the channel to avoid obstacles encountered during construction (e.g., floor joists).

The KERDI-LINE-VARIO grate is a formed stainless steel design that nests into the corresponding channel. The overall length of the grate must be trimmed to the same length as the channel. If the grate is trimmed, the supplied end caps should be used to provide a clean finished look. The KERDI-LINE-VARIO grate assembly features a minimal reveal after installation and is available in four designs: SQUARE, FLORAL, HERRINGBONE, and SLANT; in brushed stainless steel or color-coated finishes.

KERDI-LINE-VARIO drains are designed to meet the International Plumbing Code (IPC) guideline for a single standard showerhead with a maximum flow of 2.5 gpm (9.5 L/m).

KERDI-LINE is recommended for showers that exceed the International Plumbing Code (IPC) guideline for a single standard showerhead with a maximum flow rate of 2.5 gpm (9.5 L/m). Perfect for showers that include multiple shower heads, body sprays, hand wands, etc., KERDI-LINE features a wider and deeper design to accommodate higher input water flow.

Notes:

- The shortest allowable length to cut the channel and grate is 10" (25.4 cm).
- The minimum recommended tile thickness to use with the KERDI-LINE-VARIO channel is 3/8" (10 mm).

Schluter®-KERDI-LINE-FC is a stainless steel cover plate for use with KERDI-LINE to create a seamless look in applications where multiple drains are installed end-to-end. KERDI-LINE-FC is available in a brushed, chrome, or textured color-coated finish and is designed for use with either the SOLID (A) or SQUARE (B) grates.

14.1 Schluter®-SHOWERPROFILE-S/-R system profiles represent an elegant solution for finishing the area between the floor and the first course of wall tile in a way that eliminates cutting wedges of tile and ensures a consistent elevation of the first course of wall tile in KERDI-LINE applications. SHOWERPROFILE-S consists of a trapezoid-perforated anchoring leg with a groove, which accepts a tapered brushed stainless steel profile that matches the slope of the KERDI-SHOWER-LTS shower tray. The profile is adjusted to cover the exposed wall area and forms the visible surface. SHOWERPROFILE-R consists of a brushed stainless steel profile and corresponding channel. The profile is adjusted to fit the space between the KERDI-LINE and the wall tile and forms the visible surface in applications where the KERDI-LINE is placed adjacent to a wall.

Material Properties and Areas of Application

KERDI-DRAIN, KERDI-DRAIN-H, KERDI-LINE, and KERDI-LINE-VARIO are suitable for use in residential and commercial applications, including areas subject to foot and wheelchair traffic, such as showers and wet rooms in homes, hotels, schools, healthcare facilities, etc.

Various configurations of KERDI-DRAIN, KERDI-DRAIN-H, KERDI-LINE, and KERDI-LINE-VARIO are listed by UPC®, CSA, and ICC-ES PMG. Relevant industry standard guidelines for floor drains with integrated bonding flange include methods B422, B422C, SR613 and SR614 in the Tile Council of North America's (TCNA) Handbook for Ceramic Tile Installation and Method 326DR in the Terrazzo, Tile and Marble Association of Canada (TTMAC) Specification Guide 093000 Tile Installation Manual.

KERDI-DRAIN drain flanges are formed using ABS, PVC, or stainless steel 304 (1.4301 = V2A). KERDI-DRAIN-H flanges are formed using ABS or PVC. Plastic drain bodies feature a polypropylene fleece webbing on the surface of the bonding flange to accept a bond to thin-set mortar. The KERDI-DRAIN-A adaptor kits feature adaptor rings made of steel with thermoplastic rubber gaskets and adaptor flanges made of ABS. Drain grates are available in plain and coated stainless steel and anodized aluminum. The covering support is stainless steel 304 (1.4301 = V2A) with KERDI laminated on the surface.

The KERDI-LINE channel body is formed using stainless steel 316 L (1.4404 = V4A) and features a bonding flange with a KERDI collar laminated on the surface. KERDI is a bonded waterproof membrane with a modified polyethylene (PEVA) with non-woven polypropylene fleece on both sides to anchor the membrane in the thin-set mortar. The frame and grates are made of stainless steel 316 L (1.4404 = V4A). The channel support is made of pressure-resistant, expanded polystyrene (EPS). The KERDI-LINE-FC cover plate is roll-formed using stainless steel 316 L (1.4404 = V4A). The SHOWERPROFILE-S anchoring leg is made of recycled, rigid PVC. The SHOWERPROFILE-S/-R profiles are made of stainless steel 316 L (1.4404 = V4A) with KERDI laminated on the backside.

The KERDI-LINE-VARIO channel, grates, and grate end caps are formed using stainless steel 316 (1.4404 = V4A).

The KERDI-LINE-VARIO flange comprises an injection molded polypropylene drain body featuring a 2" (50 mm) NPT outlet, which attaches a standard, threaded, mechanical coupling to allow for an adhesive chemical bond to the drain pipe.

The flange features a bonding flange with a KERDI collar laminated on the surface. KERDI is a bonded waterproof membrane with a modified polyethylene (PEVA) with non-woven polypropylene fleece on both sides to anchor the membrane in the thin-set mortar.

The foam support channel is made of pressure-resistant, expanded polystyrene (EPS).

KERDI-LINE-VARIO drains are designed to meet the International Plumbing Code (IPC) guideline for a single standard showerhead with a maximum flow of 2.5 gpm (9.5 L/m).

KERDI-LINE is recommended for showers that exceed the International Plumbing Code (IPC) guideline for a single standard showerhead with a maximum flow rate of 2.5 gpm (9.5 L/m). Perfect for showers that include multiple shower heads, body sprays, hand wands, etc., KERDI-LINE features a wider and deeper design to accommodate higher input water flow.

Schluter®-Systems drain grates are resistant to most chemicals encountered in tiled environments. In special cases, the suitability

of a proposed type of material must be verified based on the anticipated chemical, mechanical, and/or other stresses. In general, grates should be protected against abrasion or scratching. Exceptions and special considerations are listed below.

Stainless steel can sustain high mechanical stresses and is particularly well suited for applications requiring resistance against chemicals and acids. For more severe chemical exposure, such as de-icing salts and chemicals used in swimming pools, we recommend the use of stainless steel 316 L, which offers even higher corrosion resistance than the 304. Even stainless steel cannot withstand all chemical exposures, such as hydrochloric acid, hydrofluoric acid or certain chlorine, chloride and brine concentrations.

Metallic-coated grates are stainless steel 304 with a metallic coating created using physical vapor deposition (PVD). The resulting metallic film is very hard and corrosion-resistant.

Textured color-coated grates are stainless steel with a powder coat. Textured color-coated shelves are aluminum with a powder coat. The coating is color-stable, UV-resistant, and suitable for exterior use. Protect the profile against abrasion or scratching.

Anodized aluminum grates feature an anodized layer that retains a uniform appearance during normal use. The surface may be damaged by grout or setting material. Therefore, these materials must be removed immediately.

Maintenance

KERDI-DRAIN, KERDI-DRAIN-H, KERDI-LINE, KERDI-LINE-VARIO, and SHOWERPROFILE-S/-R require no special maintenance and are resistant to mold and fungi. The drain grates may be removed to clean the drain housing and the drain pipes.

Clean the grates and profiles using neutral cleaners. Avoid the use of strong acids (e.g., hydrochloric, hydrofluoric) and bases/alkaline cleaners (e.g., bleach, ammonia, chlorides). Do not use abrasive cleaning agents and tools.

Even stainless steel requires periodic cleaning, which will maintain a neat appearance and reduce the risk of corrosion. Stainless steel surfaces develop a sheen when treated with a chrome-polishing agent.

Schluter®-KERDI-FIX Technical Data

Color	Grey or bright white
Basic raw material	Silyl-modified polymer (SMP)
Specific weight	Approx. 93.6 lb/ft ³ (1.5 g/ml)
Solvent content	0%
Isocyanate content	0%
Dry materials content	Approx. 100%
VOC emissions	0.0 mg/m ³
Shear strength beech wood/beech wood	Approx. 435 psi (3 N/mm ²)
Shear strength aluminum/aluminum	Approx. 290 psi (2 N/mm ²)
Elongation at failure	Approx. 200%
Skinning	About 10 minutes
Curing	1/8" (3 mm) per 24 hours
Permissible total movement	About 20%
Processing temperatures	Don't install at temperatures below 40 °F (5 °C)
Temperature stability	-40 °F (-40 °C) to 212 °F (100 °C), temporarily 356 °F (180 °C) [max. 30 minutes]
Moisture resistance	Very good
Frost ability	Not sensitive to frost
Cartridge volume	9.81 fl oz (290 ml)
Estimated coverage	
5" (12.7 cm) connection to fixed building elements	12' 10" (3.9 m) per cartridge
1/4" (6 mm) bead	30' 1" (9.2 m) per cartridge

Shelves



17.1 Schluter®-SHELF-E/-W/-N

Application and Function

17.1 Schluter®-SHELF is a wall storage system available in brushed stainless steel or aluminum in a range of textured color-coated finishes. The shelves are 5/32" (4 mm) -thick and feature CURVE, FLORAL, PURE, WAVE, and SQUARE designs. They can be used in showers and other tiled wall applications (e.g., kitchens and baths). Schluter®-SHELF-E is suitable for corner installations and available in three different shapes. It features 3/32" (2 mm) -thick tabs that allow for installation with the tile or in retrofit applications. Schluter®-SHELF-W is a rectangular shelf with two trapezoid-perforated anchoring legs for installation on walls in conjunction with the tile. Schluter®-SHELF-N is a rectangular shelf that fits the prefabricated Schluter®-KERDI-BOARD-SN shower niche. It is installed in conjunction with the tile.

Material Properties and Applications

Schluter®-SHELF is resistant to most chemicals encountered in tiled environments. In special cases, the suitability of a proposed type of material must be verified based on the anticipated chemical, mechanical, and/or other

stresses. Exceptions and special considerations are listed below.

Schluter®-SHELF in **stainless steel** is produced using stainless steel 304 (1.4301 = V2A). Stainless steel can sustain high mechanical stresses and is particularly suitable for applications requiring resistance against chemicals and acids. However, even stainless steel is not resistant to all chemical stresses, and may be affected by

hydrochloric and hydrofluoric acid or certain chlorine, chloride and brine concentrations, which may be present in detergents or swimming pools.

Schluter®-SHELF with **textured color-coated finishes** are produced using aluminum that is color-coated with a powder coat. The coating is color-stable, UV-resistant, and suitable for exterior use. Protect the shelf against abrasion and scratching.

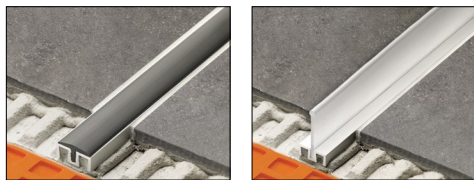
Schluter®-SHELF is offered in custom color-coated aluminum in a choice of 190 RAL Classic colors as part of the MyDesign by Schluter-Systems series. Contact Schluter-Systems Customer Service for product and ordering information.

Maintenance

Schluter®-SHELF requires no special maintenance or care and is resistant to mold and fungi. Clean shelves periodically using neutral cleaning agents. Avoid the use of strong acids (e.g., hydrochloric, hydrofluoric) and bases/alkaline cleaners (e.g., bleach, ammonia, chlorides). Do not use abrasive cleaning agents and tools.

Even stainless steel requires periodic cleaning, which will maintain a neat appearance and reduce the risk of corrosion. Stainless steel surfaces develop a sheen when treated with a chrome-polishing agent.

Shower Profiles



14.2 Schluter®-WS/-WSC/-WSL



14.2 Schluter®-WSK/-WSC/-WSL

Application and Function

14.2 Schluter®-SHOWERPROFILE-WS/-WSK system profiles, together with the Schluter®-SHOWERPROFILE-WSL/-WSC inserts, form a splashguard at the entrance of curbless showers.

Schluter®-SHOWERPROFILE-WS is an anodized aluminum support profile that is set in conjunction with the tile using thin-set mortar. It has a 3/4" (19 mm) –wide visible surface and a height of 5/16" (8 mm). Where thicker tiles are used, simply fill the space below the profile with thin-set mortar.

Schluter®-SHOWERPROFILE-WSK is an anodized aluminum support profile that is adhered to the tile surface. It has a 2-1/16" (52 mm) –wide visible surface and a height of 5/16" (8 mm).

The support profiles are combined with either the SHOWERPROFILE-WSL insert or the SHOWERPROFILE-WSC insert.

Schluter®-SHOWERPROFILE-WSL is an upright insert made of transparent polyurethane. The insert is collapsible when stepped on or rolled over with a wheelchair. The insert protrudes 1-5/32" (29 mm) above the profile surface. The SHOWERPROFILE-WSL insert does not comply with the Americans with Disabilities Act (ADA), since it exceeds the allowable height of a vertical transition despite being collapsible. Please check with local code officials for acceptance on projects where ADA guidelines must be observed before installation.

Schluter®-SHOWERPROFILE-WSC is a semi-circular insert made of semi-rigid PVC. The insert creates an inconspicuous transition from the shower area to the adjoining space and a 5/8" (16 mm) –wide visible surface. The insert protrudes

3/64" (1.2 mm) above the profile surface. The SHOWERPROFILE-WSC insert complies with the Americans with Disabilities Act (ADA).

Material Properties and Areas of Application

The SHOWERPROFILE-WS/-WSK support profiles feature an anodized aluminum layer that retains uniform appearance during normal use. The surface, however, is susceptible to scratching and wear and may be damaged by grout or setting material. Cementitious materials, in conjunction with moisture, become alkaline. Since aluminum is sensitive to alkaline substances, exposure to the alkali (depending on the concentration and duration of exposure) may result in corrosion (aluminum hydroxide formation). Therefore, it is important to remove mortar or grout residue immediately from visible surfaces. In addition, ensure the profile is solidly embedded in the setting material and that all cavities are filled to prevent the collection of alkaline water.

The SHOWERPROFILE-WSL insert is made of highly flexible polyurethane.

The SHOWERPROFILE -WSC insert is made of semi-rigid PVC.

The inserts can withstand chemical stresses typically encountered in tiled environments.

Maintenance

SHOWERPROFILE-WS/-WSK support profiles require no special maintenance or care and are resistant to mold and fungi. In the case of anodized aluminum, do not use abrasive cleaning agents. The SHOWERPROFILE-WSC/-WSL inserts are specifically treated to resist the growth of fungi and bacteria and require no special maintenance or care.

Adhesive/Sealant



8.3 Schluter®-KERDI-FIX

Any protrusions through the KERDI membrane can be treated with KERDI-FIX, or equivalent sealant, to ensure a fully waterproof assembly.

Application and Function

8.3 Schluter®-KERDI-FIX is a single-component, waterproof sealing and bonding compound with a silane-modified polymer base, which can be used in various applications.

In conjunction with KERDI, KERDI-FIX can be used to waterproof pipe and valve protrusions in the Schluter®- Shower System. KERDI-FIX is used to bond the KERDI membrane to the stainless steel KERDI-DRAIN bonding flange. KERDI-FIX can also be used to bond KERDI to building elements such as bathtubs, window elements and door frames.

Material Properties and Areas of Application

KERDI-FIX is odorless, weather- and UV-resistant. The product is elastomeric, free of solvents, and provides a strong bond to most materials, including wood, stone, concrete, metal, glass, and many synthetic materials. KERDI-FIX can be painted over with most alkyd resins or dispersion paint types. The suitability of the material must be verified based on the anticipated chemical, mechanical, and/or other stresses. KERDI-FIX is not recommended in or around swimming pool applications.

KERDI-FIX has been evaluated according to the "Standard Method for the Testing and Evaluation of Volatile Organic Chemical Emissions from Indoor Sources Using Environmental Chambers, Version 1.1" for California Specification 01350 and found to comply with the VOC requirements. California Specification 01350 is referenced by various green building standards and rating systems.

Maintenance

Storage

Unopened packages of KERDI-FIX can be stored in a cool location that is above freezing temperatures for up to 18 months.

Once the cartridge has been opened, the material has a limited shelf life.

System Installation

For complete installation guidelines and warranty criteria for shower applications, please contact Schluter®-Systems at 800-472-4588 (USA) or 800-667-8746 (Canada) to receive a copy of the Schluter®-Shower System Installation Handbook and a step-by-step installation video. To download a PDF version of the Handbook or to view the installation video online, please visit www.schluter.com.

Product Item Numbers


8.3 Schluter®-KERDI-SHOWER-T Tray with center drain placement

Item No.	Dimensions	Perimeter height	Drain placement
KST965/1525	97 cm x 152 cm (38" x 60")	29 mm (1-1/8")	center
KST1220/1525	122 cm x 152 cm (48" x 60")	28 mm (1-3/32")	center
KST1220/1830	122 cm x 183 cm (48" x 72")	32 mm (1-1/4")	center
KST1525	152 cm x 152 cm (60" x 60")	30 mm (1-3/16")	center
KST1830	183 cm x 183 cm (72" x 72")	32 mm (1-1/4")	center

8.3 Schluter®-KERDI-SHOWER-TS Tray with off-center drain placement

Item No.	Dimensions	Perimeter height	Drain placement
KST965/1525S	97 cm x 152 cm (38" x 60")	29 mm (1-1/8")	off-center

8.3 Schluter®-KERDI-SHOWER-TT Thin tray

Item No.	Dimensions	Perimeter height	Drain placement
KST965/810BF	81 cm x 97 cm (32" x 38")	23 mm (29/32")	center
KST915/1220BF	91 cm x 122 cm (36" x 48")	25 mm (1")	center
KST915BF	91 cm x 91 cm (36" x 36")	22 mm (7/8")	center
KST965BF	97 cm x 97 cm (38" x 38")	23 mm (29/32")	center
KST1220BF	122 cm x 122 cm (48" x 48")	25 mm (1")	center
KST965NA/BF	97 cm x 97 cm (38" x 38") Neo angle	26 mm (1-1/32")	off-center


8.8 Schluter®-KERDI-SHOWER-LT Tray with center linear drain placement

Item No.	Dimensions	Perimeter height	Drain placement
KSLT1000	100 cm x 100 cm (39" x 39")	32 mm (1-1/4")	center
KSLT1220	122 cm x 122 cm (48" x 48")	34 mm (1-3/8")	center
KSLT1395	140 cm x 140 cm (55" x 55")	36 mm (1-7/16")	center


8.8 Schluter®-KERDI-SHOWER-LTS Tray with perimeter linear drain placement

Item No.	Dimensions	Perimeter height	Drain placement
KSLT1000S	100 cm x 100 cm (39" x 39")	42 mm (1-21/32")	perimeter
KSLT1220S	122 cm x 122 cm (48" x 48")	46 mm (1-13/16")	perimeter
KSLT1395S	140 cm x 140 cm (55" x 55")	50 mm (2")	perimeter
KSLT915/1395S	91 cm x 140 cm (36" x 55")	50 mm (2")	perimeter
KSLT915/1830S	91 cm x 183 cm (36" x 72")	58 mm (2-5/16")	perimeter
KSLT965/1930S	97 cm x 193 cm (38" x 76")	60 mm (2-3/8")	perimeter
KSLT1930/965S	193 cm x 97 cm (76" x 38")	41 mm (1-5/8")	perimeter


8.3 Schluter®-KERDI-SHOWER-R Prefabricated ramp

Item No.	Width	Length	Height
KSR 305/1220	48" - 122 cm	12" - 30.5 cm	1-1/4" - 32 mm


12.1 Schluter®-KERDI-BOARD-SC Prefabricated curb

Item No.	Width	Length	Height
KBSC 115 150 970	4-1/2" - 11.5 cm	38" - 97 cm	6" - 15 cm
KBSC 115 150 1220	4-1/2" - 11.5 cm	48" - 122 cm	6" - 15 cm
KBSC 115 150 1524	4-1/2" - 11.5 cm	60" - 152 cm	6" - 15 cm


12.1 Schluter®-KERDI-BOARD-SB Prefabricated bench

Item No.	Width	Length	Height	Shape
KBSB 410 TA	16" - 41 cm	16" - 41 cm	20" - 51 cm	Triangular
KBSB 610 TA	24" - 61 cm	24" - 61 cm	20" - 51 cm	Triangular
KBSB 290 970 RA	38" - 97 cm	11-1/2" - 29 cm	20" - 51 cm	Rectangular
KBSB 410 1220 RA	48" - 122 cm	16" - 41 cm	20" - 51 cm	Rectangular



8.1 Schluter®-KERDI Waterproofing membrane

Item No.	Length	Area	Thickness
Roll width: 3' 3" – 1 m			
KERDI 200/5M	16' 5" – 5 m	54 ft ² – 5 m ²	8 mil
KERDI 200/7M	23' – 7 m	75 ft ² – 7 m ²	8 mil
KERDI 200/10M	33' – 10 m	108 ft ² – 10 m ²	8 mil
KERDI 200/20M	65' 7" – 20 m	215 ft ² – 20 m ²	8 mil
KERDI 200	98' 5" – 30 m	323 ft ² – 30 m ²	8 mil
Roll width: 6' 7" – 2 m			
KERDI 200200	98' 5" – 30 m	646 ft ² – 60 m ²	8 mil
KERDI200200/15M	49' 2-1/2" – 15 m	323 ft ² – 30 m ²	8 mil

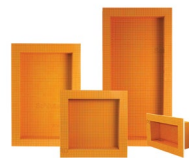
8.1 Schluter®-KERDI-DS Waterproofing membrane

Item No.	Width	Length	Area	Thickness
KERDI-DS	3' 3" – 1 m	98' 5" – 30 m	323 ft ² – 30 m ²	20 mil



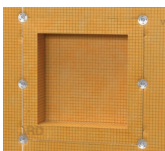
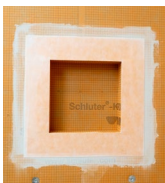
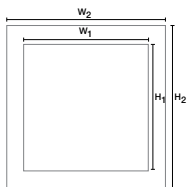
12.1 Schluter®-KERDI-BOARD Waterproof building panel

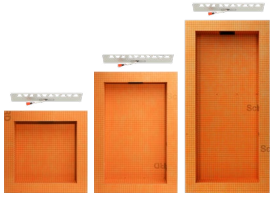
Item No.	Width	Length	Thickness
KB 12 1220 812	48" – 122 cm	32" – 81 cm	1/2" – 12.5 mm
KB 5 1220 1625	48" – 122 cm	64" – 162.5 cm	3/16" – 5 mm
KB 9 1220 1625	48" – 122 cm	64" – 162.5 cm	3/8" – 9 mm
KB 12 1220 1625	48" – 122 cm	64" – 162.5 cm	1/2" – 12.5 mm
KB 5 1220 2440	48" – 122 cm	96" – 244 cm	3/16" – 5 mm
KB 9 1220 2440	48" – 122 cm	96" – 244 cm	3/8" – 9 mm
KB 12 1220 2440	48" – 122 cm	96" – 244 cm	1/2" – 12.5 mm
KB 15 1220 2440	48" – 122 cm	96" – 244 cm	5/8" – 15 mm
KB 19 625 2440	24-1/2" – 62.5 cm	96" – 244 cm	3/4" – 19 mm
KB 25 625 2440	24-1/2" – 62.5 cm	96" – 244 cm	1" – 25 mm
KB 38 625 2440	24-1/2" – 62.5 cm	96" – 244 cm	1-1/2" – 38 mm
KB 50 625 2440	24-1/2" – 62.5 cm	96" – 244 cm	2" – 50 mm
KB 15 1220 3050	48" – 122 cm	120" – 305 cm	5/8" – 15 mm



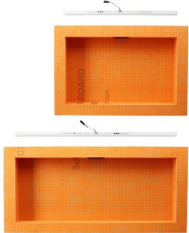
12.1 Schluter®-KERDI-BOARD-SN Prefabricated shower niche

Item No.	W ₁	H ₁	W ₂	H ₂	Depth
KB 12 SN 305 152 AF	12" – 305 mm	6" – 152 mm	16" – 406 mm	10" – 250 mm	3-1/2" – 8.9 cm
KB 12 SN 305 305 AF	12" – 305 mm	12" – 305 mm	16" – 406 mm	16" – 406 mm	3-1/2" – 8.9 cm
KB 12 SN 305 508 AF	12" – 305 mm	20" – 508 mm	16" – 406 mm	24" – 610 mm	3-1/2" – 8.9 cm
KB 12 SN 305 711 AF	12" – 305 mm	28" – 711 mm	16" – 406 mm	32" – 810 mm	3-1/2" – 8.9 cm

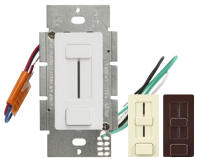




Schluter®-KERDI-BOARD-SNLT-VERTICAL		Prefabricated niche with LED strip	
Item No.	Height	Width	Depth
KB 12 SNLT 1 WW F	12" - 305 mm	12" - 305 mm	3-1/2" - 89 mm
KB 12 SNLT 2 WW F	20" - 508 mm	12" - 305 mm	3-1/2" - 89 mm
KB 12 SNLT 3 WW F	28" - 711 mm	12" - 305 mm	3-1/2" - 89 mm



Schluter®-KERDI-BOARD-SNLT-HORIZONTAL		Prefabricated niche with LED strip	
Item No.	Height	Width	Depth
KB 12 SNLT 4 WWF	305 mm - 12"	508 mm - 20"	89 mm - 3-1/2"
KB 12 SNLT 5 WWF	305 mm - 12"	711 mm - 28"	89 mm - 3-1/2"



Schluter®-LIPROTEC-ECX		LED driver and dimmer	
Item No.	Input	Output	Power
LT ECX 1W	120V AC	24V DC	60W



Schluter®-LIPROTEC-ECD		Dimmable LED driver	
Item No.	Input	Output	Power
LT ECD 1W	120V AC	24V DC	24W



Schluter®-LIPROTEC-CW		Cable for LIPROTEC white LED system	
Item No.	Length	Gauge	Conductors
LT CW / 4M	13' 1-1/2" - 4 m	20AWG	2
LT CW / 8M	26' 3" - 8 m	20AWG	2
LT CW / 15M	49' 2-1/2" - 15 m	20AWG	2



Schluter®-KERDI-BOARD-KIT

Includes	Description	Quantity
1 KERDI-BOARD	Waterproofing building panel 1/2" x 48" x 38" (1.25 cm x 122 cm x 97 cm) = 101 ft² (9.4 m²)	8
2 KERDI-BAND	Waterproofing strip 5" x 98' 5" (125 mm x 30 m)	1
3 KERDI-SEAL-PS	Pipe seal 1/2" (12.5 mm), 3/4" (20 mm)	2
4 KERDI-SEAL-MV	Mixing valve seal 4-1/2" (114 mm)	1
5 KERDI-BOARD-ZT/-ZS	Screws and washers	140
6 KERDI-FIX	Sealant 9.8 fl oz (290 ml)	2



8.1 Schluter®-KERDI-BAND

Waterproofing strip

Item No.	Width	Length	Thickness
KEBA 100/125/5M	5" – 12.5 cm	16' 5" – 5 m	4 mil
KEBA 100/125/10M	5" – 12.5 cm	33' – 10 m	4 mil
KEBA 100/125	5" – 12.5 cm	98' 5" – 30 m	4 mil
KEBA 100/125/300	5" – 12.5 cm	984' 3" – 300 m	4 mil
KEBA 100/185/5M	7-1/4" – 18.5 cm	16' 5" – 5 m	4 mil
KEBA 100/185	7-1/4" – 18.5 cm	98' 5" – 30 m	4 mil
KEBA 100/250/5M	10" – 25 cm	16' 5" – 5 m	4 mil
KEBA 100/250	10" – 25 cm	98' 5" – 30 m	4 mil



8.1 Schluter®-KERDI-FLEX

Waterproofing strip for use above movement joints

Item No.	Width	Length	Thickness
FLEX 125/5M	5" – 12.5 cm	16' 5" – 5 m	12 mil
FLEX 250/5M	10" – 25 cm	16' 5" – 5 m	12 mil
FLEX 125/30	5" – 12.5 cm	98' 5" – 30 m	12 mil
FLEX 250/30	10" – 25 cm	98' 5" – 30 m	12 mil



8.1 Schluter®-KERDI-KERECK-F

Preformed corner

Item No.	Thickness	Packaging
KERECK/FI 2	4 mil	2 inside corners
KERECK/FI 10	4 mil	10 inside corners
KERECK/FA 2	4 mil	2 outside corners
KERECK/FA 10	4 mil	10 outside corners



8.1 Schluter®-KERDI-KERS-B

Preformed corner

Item No.	Thickness	Description	Packaging
KERECK 135 FI 2	4 mil	Inside corner, 135°	2 units
KERECK 135 FI 10	4 mil	Inside corner, 135°	10 units
KERSB 135 K LR	4 mil	Bench corners	1 right and 1 left
KERSB 135 K 5LR	4 mil	Bench corners	5 right and 5 left
KERSB 135 K	4 mil	Bench/ neo-angle corner kit	1 right and 1 left bench corner, and 2 135° inside corners



8.3 Schluter®-KERDI-FIX

Adhesive/sealant

Item No.	Description
KERDIFIX / <i>color</i> *	Cartridge - 9.81 fl oz – 290 ml
KERDIFIX 100 G	Tube - 3.38 fl oz – 100 ml

*Color Codes



To complete the item number, add the *color* code (e.g., KERDIFIX/BW).



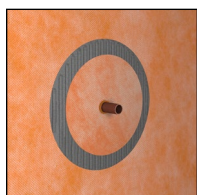
8.1 Schluter®-KERDI-KERS Preformed corner

Item No.	Thickness	Packaging
KERS 20L	4 mil	Left inside corner – 3/4" (20 mm)
KERS 28L	4 mil	Left inside corner – 1-3/32" (28 mm)
KERS 20R	4 mil	Right inside corner – 3/4" (20 mm)
KERS 28R	4 mil	Right inside corner – 1-3/32" (28 mm)



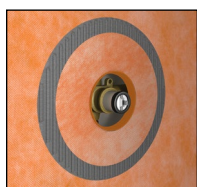
8.1 Schluter®-KERDI-SEAL-PS Pipe seal with over-molded rubber gasket

Item No.	Pipe nipple opening diam.	Thickness	Packaging
KMS185/12	1/2" – 12.5 cm	4 mil	1 unit
KMS185/20	3/4" – 20 cm	4 mil	1 unit
KMS10185/12	1/2" – 12.5 cm	4 mil	10 units
KMS10185/20	3/4" – 20 cm	4 mil	10 units



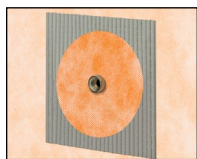
8.1 Schluter®-KERDI-SEAL-MV Mixing valve seal with over-molded rubber gasket

Item No.	Mixing valve opening diam.	Thickness	Packaging
KMSMV235/114	4-1/2" – 114 cm	4 mil	1 unit
KMSMV10235/114	4-1/2" – 114 cm	4 mil	10 units



8.1 Schluter®-KERDI-KM Pipe seal

Item No.	Diameter	Opening diameter	Thickness	Packaging
KM5117/22	6" - 15 cm	7/8" - 22 mm	4 mil	5 units



14.2 Schluter®-SHOWERPROFILE-WS Support profile

Item No.	Height	Length
SPWS 19 AE/100	5/16" - 8 mm	39" - 1 m
SPWS 19 AE	5/16" - 8 mm	8' 2-1/2" - 2.5 m



14.2 Schluter®-SHOWERPROFILE-WSK Support profile - retrofit

Item No.	Height	Length
SPWSK 52 AE/100	5/16" - 8 mm	39" - 1 m
SPWSK 52 AE	5/16" - 8 mm	8' 2-1/2" - 2.5 m



14.2 Schluter®-SHOWERPROFILE-WSC Semi-circular lip insert

Item No.	Height	Length
SPWSC 16 GS/100	5/16" - 8 mm	39" - 1 m
SPWSC 16 GS	5/16" - 8 mm	8' 2-1/2" - 2.5 m



14.2 Schluter®-SHOWERPROFILE-WSL Straight lip insert

Item No.	Height	Length
SPWSL 30 T/100	5/16" - 8 mm	39" - 1 m
SPWSL 30 T	5/16" - 8 mm	8' 2-1/2" - 2.5 m



14.2 Schluter®-SHOWERPROFILE-WSK-EK End cap

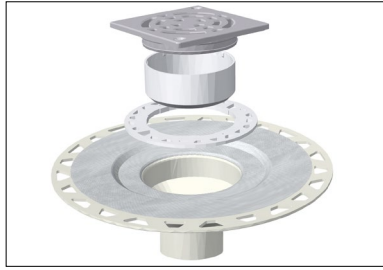
Item No.	Height
EK/SPWSK 52 AE	5/16" - 8 mm

Schluter®-KERDI-TROWEL Trowel

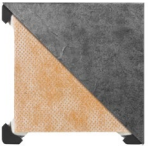

Item No.	Notch Size	Packaging
TRL-KER	1/8" x 1/8" - 3 x 3 mm	1 unit







8.2 Schluter®-KERDI-DRAIN



4" Grate Options

Tileable Covering Support	Anodized Aluminum		
 <p>TILE (ECS) Patent pending</p>	 <p>CONTOUR</p>	Available in the following colors and finishes: <div style="display: flex; justify-content: space-around;"> <div data-bbox="609 735 755 819"> <p>Brushed Nickel (ATGB)</p> </div> <div data-bbox="771 735 917 819"> <p>Brushed Copper (AKGB)</p> </div> <div data-bbox="933 735 1079 819"> <p>Brushed Brass (AMGB)</p> </div> </div>	




Stainless Steel

 <p>CLASSIC</p> <p>Available in the following colors and finishes:</p> <div style="display: grid; grid-template-columns: repeat(2, 1fr); gap: 5px;"> <div data-bbox="259 1008 406 1092"> <p>Stainless Steel (E)</p> </div> <div data-bbox="422 1008 568 1092"> <p>Nickel (ET)</p> </div> <div data-bbox="259 1113 406 1197"> <p>Chrome (EP)</p> </div> <div data-bbox="422 1113 568 1197"> <p>Vintage Gold (EVG)</p> </div> <div data-bbox="259 1218 406 1302"> <p>Oil-rubbed Bronze (EOB)</p> </div> <div data-bbox="422 1218 568 1302"> <p>Classic Gold (ECG)</p> </div> </div>	 <p>PURE</p>  <p>CURVE</p>  <p>FLORAL</p> <p>Available in the following colors and finishes:</p> <div style="display: grid; grid-template-columns: repeat(4, 1fr); gap: 5px;"> <div data-bbox="933 1008 1079 1092"> <p>Brushed Stainless Steel (EB)</p> </div> <div data-bbox="1096 1008 1242 1092"> <p>Brushed Nickel (EBT)</p> </div> <div data-bbox="1258 1008 1404 1092"> <p>Brushed Vintage Gold (EBVG)</p> </div> <div data-bbox="1421 1008 1567 1092"> <p>Brushed Classic Gold (EBCG)</p> </div> <div data-bbox="933 1113 1079 1197"> <p>Matte White (MBW)</p> </div> <div data-bbox="1096 1113 1242 1197"> <p>Ivory (TSI)</p> </div> <div data-bbox="1258 1113 1404 1197"> <p>Greige (TSBG)</p> </div> <div data-bbox="1421 1113 1567 1197"> <p>Cream (TSC)</p> </div> <div data-bbox="933 1218 1079 1302"> <p>Bronze (TSOB)</p> </div> <div data-bbox="1096 1218 1242 1302"> <p>Stone Grey (TSSG)</p> </div> <div data-bbox="1258 1218 1404 1302"> <p>Pewter (TSG)</p> </div> <div data-bbox="1421 1218 1567 1302"> <p>Dark Anthracite (TSDA)</p> </div> <div data-bbox="933 1323 1079 1386"> <p>Matte Black (MGS)</p> </div> </div>
--	--

6" Grate Options

Stainless Steel	Stainless Steel Cover for Cleanout Applications
 <p>CLASSIC (6E)</p>  <p>CLASSIC ROUND (6E)</p>	 <p>(6CE)</p>

Flange Options



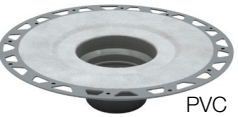

ABS - 2" or 3" Outlet	PVC - 2" or 3" Outlet	Stainless Steel - 2" or 3" No-hub Outlet	Stainless Steel - 2" Threaded Outlet
			

Note: Product listings and certifications can be referenced on page 43.

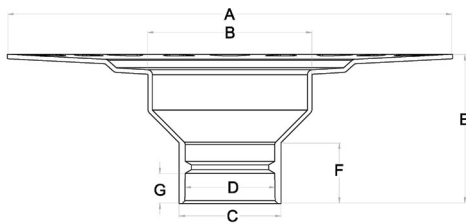


Schluter®-KERDI-DRAIN

ABS or PVC FLANGE — 2" or 3" OUTLET

2" (50 mm) drain outlet		3" (75 mm) drain outlet	
Material	Item No.	Material	Item No.
 ABS	KD2 FLK ABS	 ABS	KD3 FLK ABS
 PVC	KD2 FLK PVC	 PVC	KD3 FLK PVC

Additional components included			
 4x Inside corners	 2x Outside corners	 1x Pipe seal (3/4" - 20 mm)	 1x Mixing valve seal (4-1/2" - 114 mm)

Flange measurements			
ABS or PVC			
		2" (50 mm) drain outlet	3" (75 mm) drain outlet
	A	11-13/16" - 300 mm	11-13/16" - 300 mm
	B	4-17/32" - 115.2 mm	4-17/32" - 115.2 mm
	C	2-45/64" - 68.6 mm	3-15/16" - 100 mm
	D	2-3/8" - 60.5 mm	3-1/2" - 88.8 mm
	E	3-15/16" - 100 mm	3-15/16" - 100 mm
	F	1-39/64" - 40.6 mm	2" - 50.8 mm
	G	7/8" - 22.5 mm	1-1/2" - 38.1 mm


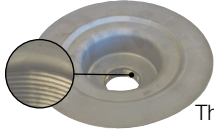



When using a flange with 3" outlet, a 6" grate is recommended.



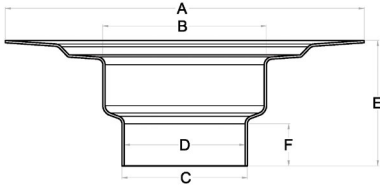
Schluter®-KERDI-DRAIN

STAINLESS STEEL FLANGE – 2" or 3" OUTLET

2" (50 mm) drain outlet	
Material	Item No.
 <p>No-hub</p>	KD2 FLK E
 <p>Threaded</p>	KD2 FLK ETH

3" (75 mm) drain outlet	
Material	Item No.
 <p>No-hub</p>	KD3 FLK E

Additional components included					
 <p>4x Inside corners</p>	 <p>2x Outside corners</p>	 <p>1x Pipe seal (3/4" - 20 mm)</p>	 <p>1x Mixing valve seal (4-1/2" - 114 mm)</p>	 <p>1x KERDI-FIX sealing and bonding compound (3.38 fl oz - 100 ml)</p>	

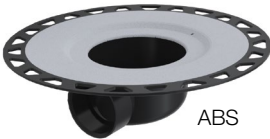
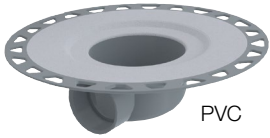
Flange measurements			
Stainless steel			
		2" (50 mm) no-hub outlet	3" (75 mm) no-hub outlet
	A	9-27/32" - 250 mm	9-27/32" - 250 mm
	B	4-1/2" - 115.4 mm	4-1/2" - 114 mm
	C	2-13/32" - 61.3 mm	3-7/16" - 87.4 mm
	D	2-13/32" - 60.6 mm	3-5/16" - 84.2 mm
	E	3-11/32" - 85 mm	3-7/16" - 87.4 mm
	F	53/64" - 21 mm	1-5/32" - 29.4 mm



When using a flange with 3" outlet, a 6" grate is recommended.

Schluter®-KERDI-DRAIN-H

ABS or PVC FLANGE — 2" OUTLET HORIZONTAL

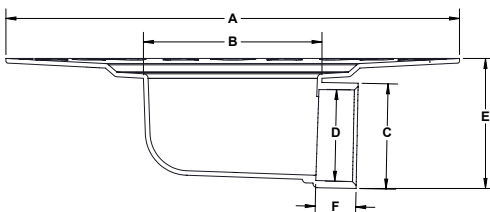
2" (50 mm) drain outlet	
Material	Item No.
 ABS	KDH2 FLK ABS
 PVC	KDH2 FLK PVC

Additional components included



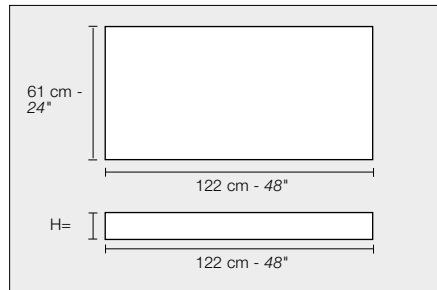
Flange measurements

ABS or PVC

2" (50 mm) horizontal drain outlet	
	
A	11-13/16" - 300 mm
B	4-21/32" - 118.3 mm
C	2-47/64" - 69.5 mm
D	2-3/8" - 60.5 mm
E	3-3/8" - 85.7 mm
F	1-1/16" - 27 mm

Schluter®-KERDI-SHOWER-CB

Schluter®-KERDI-SHOWER-CB is a height compensation board made of lightweight expanded polystyrene. It can easily be cut to size to fit around the drain and waste pipe in KERDI-DRAIN-H applications or the adaptor ring in KERDI-DRAIN-A or KERDI-LINE-A applications. Multiple boards can be used to fit the size and shape of the shower.



Schluter®-KERDI-SHOWER-CB		
Compensation board		
H = in - cm	Item No.	Dimensions
1 - 2.5	KSCB 25 610 1220	48" x 24" - 122 cm x 61 cm
3-1/2 - 8.9	KSCB 90 610 1220	48" x 24" - 122 cm x 61 cm

Schluter®-KERDI-DRAIN-A

ADAPTOR KIT — 5-1/2" or 7-1/2" ADAPTOR RING

Schluter®-KERDI-DRAIN adaptor kits are designed to convert clamping ring drains to integrated bonding flange drains when removal of the clamping ring drain is not practical (e.g., when they are set in concrete slabs). The adaptor kit includes a steel adaptor ring, available in 5-1/2" (139.7 mm) and 7-1/2" (191 mm) diameter sizes, with an over-molded rubber gasket and a variety of perforated hole patterns that align with most common clamping ring drains.

5-1/2" (139.7 mm) adaptor ring	
Flange and ring	Item No.
<p>5-1/2"</p> <p>Also included: Height adjustment collar for KERDI-DRAIN grate</p>	KDAM5 FLK ABS

7-1/2" (191 mm) adaptor ring	
Flange and ring	Item No.
<p>7-1/2"</p> <p>Also included: Lateral adjustment ring for KERDI-DRAIN grate</p>	KDA7 FLK ABS

Additional components included

	4x Inside corners		2x Outside corners		1x Pipe seal (3/4" - 20 mm)		1x Mixing valve seal (4-1/2" - 114 mm)		1x KERDI-FIX sealing and bonding compound (3.38 fl oz - 100 ml)
--	-----------------------------	--	------------------------------	--	--	--	---	--	---

Flange and adaptor ring measurements	
ABS	
	5-1/2"
	A 11-13/16" - 300 mm
	B 2-5/16" - 58.7 mm
	C 2-17/32" - 64.1 mm
	D 5-1/2" - 139.7 mm
	E 2-11/16" - 68.2 mm
	F 1" - 25.2 mm
	G 2-9/32" - 57.8 mm

Flange and adaptor ring measurements	
ABS	
	7-1/2"
	A 11-13/16" - 300 mm
	B 4-13/32" - 111.8 mm
	C 4-11/16" - 118.9 mm
	D 7-1/2" - 191 mm
	E 5-7/64" - 130 mm
	F 3-1/16" - 77.8 mm
	G 3-41/64" - 92.4 mm



The 6" round/square grates are **NOT** compatible with the 5-1/2" ring flange.

Schluter®-KERDI-DRAIN-STYLE

GRATES FOR USE WITH FLANGES WITH 2" OUTLET

4" (100 mm) Grate

Stainless Steel

PURE	
Grate finish	Item No.
Brushed stainless steel (EB)	KDIF4 GRK EB D8
Brushed nickel (EBT)	KDIF4 GRK EBT D8
Brushed vintage gold (EBVG)	KDIF4 GRK EBVG D8
Brushed classic gold (EBCG)	KDIF4 GRK EBCG D8



CURVE	
Grate finish	Item No.
Brushed stainless steel (EB)	KDIF4 GRK EB D6
Brushed nickel (EBT)	KDIF4 GRK EBT D6
Brushed vintage gold (EBVG)	KDIF4 GRK EBVG D6
Brushed classic gold (EBCG)	KDIF4 GRK EBCG D6



FLORAL	
Grate finish	Item No.
Brushed stainless steel (EB)	KDIF4 GRK EB D5
Brushed nickel (EBT)	KDIF4 GRK EBT D5
Brushed vintage gold (EBVG)	KDIF4 GRK EBVG D5
Brushed classic gold (EBCG)	KDIF4 GRK EBCG D5



Contents		
 <p>1x Grate and frame</p>	 <p>1x Height adjustment collar</p>	 <p>1x Lateral adjustment ring</p>



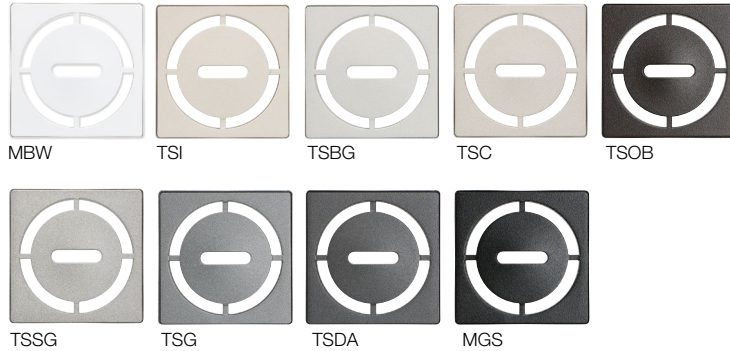
Schluter®-KERDI-DRAIN-STYLE

GRATES FOR USE WITH FLANGES WITH 2" OUTLET

4" (100 mm) Grate

TRENDLINE

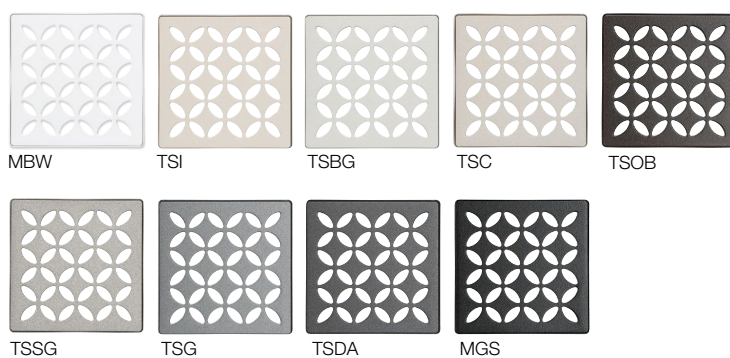
PURE	
Grate finish	Item No.
Matte white (MBW)	KDIF4 GRK MBW D8
Ivory (TSI)	KDIF4 GRK TSI D8
Greige (TSBG)	KDIF4 GRK TSBG D8
Cream (TSC)	KDIF4 GRK TSC D8
Bronze (TSOB)	KDIF4 GRK TSOB D8
Stone grey (TSSG)	KDIF4 GRK TSSG D8
Pewter (TSG)	KDIF4 GRK TSG D8
Dark anthracite (TSDA)	KDIF4 GRK TSDA D8
Matte black (MGS)	KDIF4 GRK MGS D8



CURVE	
Grate finish	Item No.
Matte white (MBW)	KDIF4 GRK MBW D6
Ivory (TSI)	KDIF4 GRK TSI D6
Greige (TSBG)	KDIF4 GRK TSBG D6
Cream (TSC)	KDIF4 GRK TSC D6
Bronze (TSOB)	KDIF4 GRK TSOB D6
Stone grey (TSSG)	KDIF4 GRK TSSG D6
Pewter (TSG)	KDIF4 GRK TSG D6
Dark anthracite (TSDA)	KDIF4 GRK TSDA D6
Matte black (MGS)	KDIF4 GRK MGS D6



FLORAL	
Grate finish	Item No.
Matte white (MBW)	KDIF4 GRK MBW D5
Ivory (TSI)	KDIF4 GRK TSI D5
Greige (TSBG)	KDIF4 GRK TSBG D5
Cream (TSC)	KDIF4 GRK TSC D5
Bronze (TSOB)	KDIF4 GRK TSOB D5
Stone grey (TSSG)	KDIF4 GRK TSSG D5
Pewter (TSG)	KDIF4 GRK TSG D5
Dark anthracite (TSDA)	KDIF4 GRK TSDA D5
Matte black (MGS)	KDIF4 GRK MGS D5



Contents



1x
Grate and frame



1x
Height adjustment collar



1x
Lateral adjustment ring



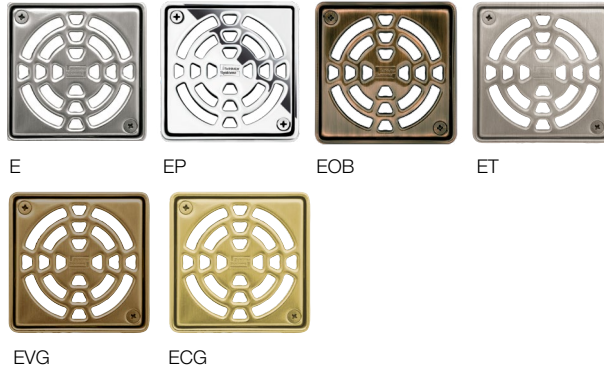
Schluter®-KERDI-DRAIN

GRATES FOR USE WITH FLANGES WITH 2" OUTLET

4" (100 mm) Grate

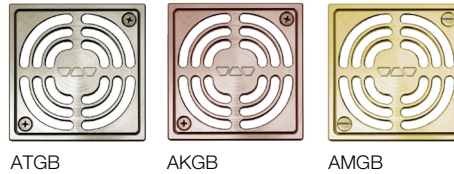
Stainless steel - CLASSIC

CLASSIC	
Grate finish	Item No.
Stainless steel (E)	KD4 GRK E
Chrome (EP)	KD4 GRK EP
Oil-rubbed bronze (EOB)	KD4 GRK EOB
Nickel (ET)	KD4 GRK ET
Vintage gold (EVG)	KD4 GRK EVG
Classic gold (ECG)	KD4 GRK ECG



Anodized aluminum - CONTOUR

CONTOUR	
Grate finish	Item No.
Brushed nickel (ATGB)	KD4 GRK ATGB
Brushed copper (AKGB)	KD4 GRK AKGB
Brushed brass (AMGB)	KD4 GRK AMGB



Contents					
	1x Grate and frame		1x Height adjustment collar		1x Lateral adjustment ring

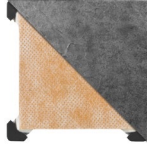
Schluter®-KERDI-DRAIN

GRATES FOR USE WITH FLANGES WITH 2" OUTLET

4" (100 mm) Grate

TILE

TILE	
Grate finish	Item No.
TILE	KD4 GRK ECS



Contents	
	1x Tileable covering support
	1x Spacer
	1x Lateral adjustment ring



The tileable grate is not suitable for use with the KERDI-DRAIN-F flange.



GRATES FOR USE WITH FLANGES WITH 2" or 3" OUTLET

6" (150 mm) Grate

Stainless steel - CLASSIC

CLASSIC SQUARE	
Grate finish	Item No.
Stainless steel (E)	KD6 GRK E



Contents	
	1x Grate and frame with integrated height adjustment collar
	1x Lateral adjustment ring

CLASSIC ROUND	
Grate finish	Item No.
Stainless steel (E)	KD6 GRK RE











The 6" (150 mm) grates are not suitable for use with the KERDI-DRAIN-F flange and the KERDI-DRAIN-A flange with 5-1/2" (139.7 mm) adaptor ring.



Schluter®-KERDI-DRAIN










DRAIN KITS — ABS or PVC FLANGE - 2" OUTLET - STAINLESS STEEL GRATE

Schluter®-KERDI-DRAIN		
	ABS - 2" (50 mm)	PVC - 2" (50 mm)
4" (100 mm) square grate		
Stainless steel	KD2/ABS/E	KD2/PVC/E

Contents							
	1x Flange		1x Grate and frame		1x Height adjustment collar		1x Lateral adjustment ring
	4x Inside corners		2x Outside corners		1x Pipe seal (3/4" - 20 mm)		1x Mixing valve seal (4-1/2" - 114 mm)



ADAPTOR KIT — 5-1/2" ADAPTOR RING - 4" STAINLESS STEEL GRATE



5-1/2" (139.7 mm) adaptor ring	
	ABS
4" (100 mm) square grate	
Stainless steel	KDAM5 ABS E

Contents							
	1x Flange		1x Grate and frame		1x Height adjustment collar		1x Adaptor ring
	4x Inside corners		2x Outside corners		1x Pipe seal (3/4" - 20 mm)		1x Mixing valve seal (4-1/2" - 114 mm)
	1x KERDI-FIX sealing and bonding compound (3.38 fl oz - 100 ml)						


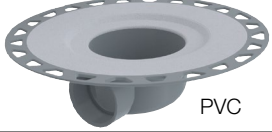
Schluter®-KERDI-DRAIN

ABS or PVC FLANGE — 2" or 3" OUTLET - WITHOUT SEALS AND CORNERS


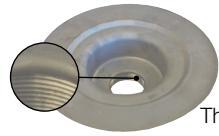
2" (50 mm) drain outlet		
Material	1 Unit	10 Units
	Item No.	Item No.
 ABS	KD2/ABS/FL	KD2/ABS/FL10
 PVC	KD2/PVC/FL	KD2/PVC/FL10


3" (75 mm) drain outlet	
Material	Item No.
 ABS	KD3/ABS/FL
 PVC	KD3/PVC/FL

ABS or PVC HORIZONTAL FLANGE — 2" OUTLET - WITHOUT SEALS AND CORNERS

2" (50 mm) drain outlet	
Material	Item No.
 ABS	KDH2/ABS/FL
 PVC	KDH2/PVC/FL

STAINLESS STEEL FLANGE — 2" or 3" OUTLET - WITHOUT SEALS AND CORNERS

2" (50 mm) drain outlet		
Material	1 Unit	10 Units
	Item No.	Item No.
 No-hub	KD2/E/FL	KD2/E/FL10
 Threaded	KD2/ETH/FL	-

3" (75 mm) drain outlet	
Material	Item No.
 No-hub	KD3/E/FL

Also included with stainless steel flanges



1x
KERDI-FIX
sealing and bonding compound
(3.38 fl oz – 100 ml)



Note: Not included with 10-pack




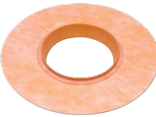


When using a flange with 3" outlet, a 6" grate is recommended.

Schluter®-KERDI-DRAIN


10 PACKS — ABS OR PVC FLANGE - 2" OUTLET






2" (50 mm) drain outlet	
Material	Item No.
 ABS	KD2 FLK ABS 10
 PVC	KD2 FLK PVC 10

Additional components included			
	40x Inside corners		20x Outside corners
	10x Pipe seal (3/4" - 20 mm)		10x Mixing valve seal (4-1/2" - 114 mm)

Note: 10 packs are packaged in bulk, not individually boxed.

10 PACKS — ABS FLANGE - 5-1/2" ADAPTOR RING

5-1/2" (139.7 mm) adaptor ring	
Flange and ring	Item No.
 5-1/2" Also included: Height adjustment collar for KERDI-DRAIN grate	KDAM5 FLK ABS 10

Additional components included			
	40x Inside corners		20x Outside corners
	10x Pipe seal (3/4" - 20 mm)		10x Mixing valve seal (4-1/2" - 114 mm)
	10x KERDI-FIX sealing and bonding compound (3.38 fl oz - 100 ml)		

Note: 10 packs are packaged in bulk, not individually boxed.

i




The 6" round/square grates are **NOT** compatible with the 5-1/2" ring flange.

10 PACKS — 4" GRATE - STAINLESS STEEL

Stainless steel - CLASSIC



Stainless steel
Item No.
KD4 GRK E 10

Contents			
	10x Grate and frame		10x Height adjustment collar
	10x Lateral adjustment ring		

Note: 10 packs are packaged in bulk, not individually boxed.

Schluter®-KERDI-DRAIN

6" SQUARE CLEAN OUT COVER

The **Schluter®-KERDI-DRAIN Clean Out Cover** is a 6" stainless steel cover available for installations where the KERDI-DRAIN bonding flange is to be used in a cleanout application.



Clean out cover 6"	
Item No.	Finish
KD-GR6C-E	Stainless steel

TAMPER PROOF SCREWS

Schluter®-KERDI-DRAIN Tamper Proof Screws are designed as a high security accessory for the KERDI-DRAIN. Ideal for loss prevention and anti-theft, these tamper proof screws are used in environments where tamper resistance is desired or required (e.g., healthcare or education facilities, etc.). Phillips head screws are included with the KERDI-DRAIN. The tamper-proof screws as well as the driver bit must be purchased separately.



Tamper proof screw and driver bit	
Item No.	Description
KD/TPSCRW	Tamper proof screw
KD/TPWRCH	Driver bit

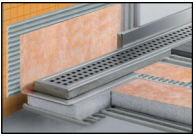
STRAINER

The **Schluter®-KERDI-DRAIN Strainer** is a hair catcher customized to fit inside the KERDI-DRAIN flange to trap and collect hair. Simple to remove and clean, the hair catcher fits discreetly into the drain to prevent hair clogs that can lead to blocked pipes.

Note: The KERDI-DRAIN strainer is only suitable for use with flanges with 2" (50 mm) vertical outlets (ABS, PVC, and stainless steel with no-hub or threaded outlet).



Strainer for KERDI-DRAIN	
Item No.	Description
KD-STR	Strainer



Note: There are multiple selections to be made for this product. Begin by selecting the appropriate channel body length then proceed to grate selection accordingly, keeping in mind there two frame height options for the SOLID (A) and SQUARE (B) grates.

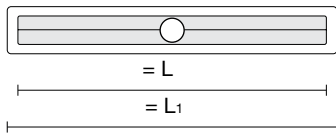
Schluter®-KERDI-LINE

CHANNEL BODY

Contents

- 1x** Channel body
- 1x** Channel support
- 1x** No-hub coupling
- 4x** Inside corners
- 2x** Outside corners
- 1x** Pipe seal (3/4" - 20 mm)
- 1x** Mixing valve seal (4-1/2" - 114 mm)

Channel body center outlet

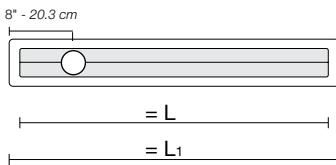


Schluter®-KERDI-LINE

Channel body - stainless steel - center outlet

L = in. - cm	L ₁ = in. - cm	Item No.
19-11/16 - 50	21-11/16 - 55	KL1V 60 E 50
23-5/8 - 60	25-5/8 - 65	KL1V 60 E 60
27-9/16 - 70	29-9/16 - 75	KL1V 60 E 70
31-1/2 - 80	33-1/2 - 85	KL1V 60 E 80
35-7/16 - 90	37-7/16 - 95	KL1V 60 E 90
39-3/8 - 100	41-3/8 - 105	KL1V 60 E 100
43-5/16 - 110	45-5/16 - 115	KL1V 60 E 110
47-1/4 - 120	49-1/4 - 125	KL1V 60 E 120
51-3/16 - 130	53-3/16 - 135	KL1V 60 E 130
55-1/8 - 140	57-1/8 - 145	KL1V 60 E 140
59-1/16 - 150	61-1/16 - 155	KL1V 60 E 150
62-15/16 - 160	64-15/16 - 165	KL1V 60 E 160
66-7/8 - 170	68-7/8 - 175	KL1V 60 E 170
70-13/16 - 180	72-13/16 - 185	KL1V 60 E 180

Channel body off-set outlet



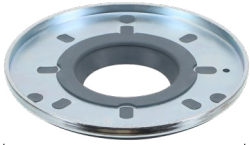
Channel body - stainless steel - off-set outlet

L = in. - cm	L ₁ = in. - cm	Item No.
27-9/16 - 70	29-9/16 - 75	KL1VO 60 E 70
31-1/2 - 80	33-1/2 - 85	KL1VO 60 E 80
35-7/16 - 90	37-7/16 - 95	KL1VO 60 E 90
39-3/8 - 100	41-3/8 - 105	KL1VO 60 E 100
43-5/16 - 110	45-5/16 - 115	KL1VO 60 E 110
47-1/4 - 120	49-1/4 - 125	KL1VO 60 E 120

LINEAR DRAIN ADAPTOR KIT — 5-1/2" (139.7 mm)

Schluter®-KERDI-LINE-A

Schluter®-KERDI-LINE-A adaptor kits are designed to convert clamping ring drains to KERDI-LINE linear drains when removal of the clamping ring drain is not practical (e.g., when they are set in concrete slabs). The adaptor kit includes a steel adaptor ring, available in 5-1/2" (139.7 mm) diameter, with an over-molded rubber gasket and a variety of perforated hole patterns that align with most common clamping ring drains.




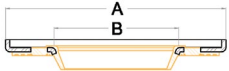
139.7 mm
5-1/2"

Linear drain adaptor kit (139.7 mm - 5-1/2")	
1 UNIT	10-PACK*
Item No.	Item No.
KLAM 5K	KLAM 5K 10

*Note:
10-packs are packaged in bulk, not individually boxed.



Additional component included	
	<p>1x KERDI-FIX sealing and bonding compound (100 ml - 3.38 fl oz)</p>

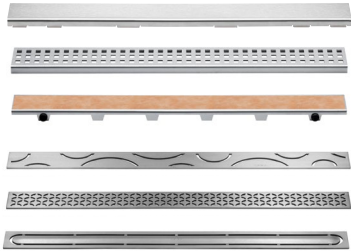
Adaptor ring measurements	
	A 139.7 mm - 5-1/2"
	B 64.6 mm - 2-9/16"



Schluter®-KERDI-LINE

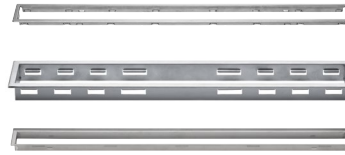
GRATE ASSEMBLY - BRUSHED STAINLESS STEEL

CONTENTS

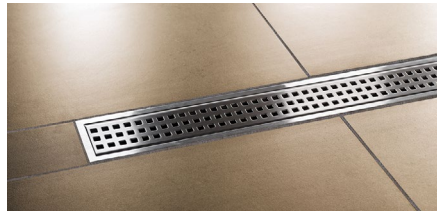
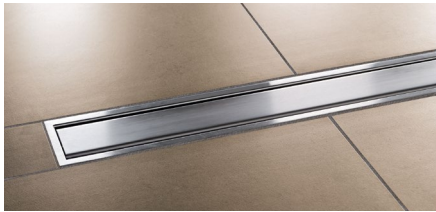


1x
Grate
6 design options:

- SOLID
- SQUARE
- TILE
- CURVE
- FLORAL
- PURE

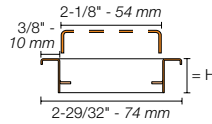
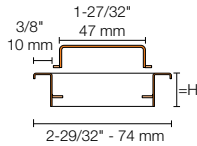


1x
Grate frame with height adjustment spacers.
See product tables for frame height options (not included with TILE grate).



SOLID (A)

SQUARE (B)



Grate assemblies - Brushed stainless steel

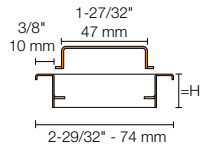
3/4" (19 mm) frame height for 1/8" to 9/16" (3 mm to 15 mm) -thick coverings			
Length = in. - cm	SOLID (A)	SQUARE (B)	
	Item No.	Item No.	
19-11/16 - 50	KL1AR 19 EB 50	KL1B 19 EB 50	
23-5/8 - 60	KL1AR 19 EB 60	KL1B 19 EB 60	
27-9/16 - 70	KL1AR 19 EB 70	KL1B 19 EB 70	
31-1/2 - 80	KL1AR 19 EB 80	KL1B 19 EB 80	
35-7/16 - 90	KL1AR 19 EB 90	KL1B 19 EB 90	
39-3/8 - 100	KL1AR 19 EB 100	KL1B 19 EB 100	
43-5/16 - 110	KL1AR 19 EB 110	KL1B 19 EB 110	
47-1/4 - 120	KL1AR 19 EB 120	KL1B 19 EB 120	
51-3/16 - 130	KL1AR 19 EB 130	KL1B 19 EB 130	
55-1/8 - 140	KL1AR 19 EB 140	KL1B 19 EB 140	
59-1/16 - 150	KL1AR 19 EB 150	KL1B 19 EB 150	
62-15/16 - 160	KL1AR 19 EB 160	KL1B 19 EB 160	
66-7/8 - 170	KL1AR 19 EB 170	KL1B 19 EB 170	
70-13/16 - 180	KL1AR 19 EB 180	KL1B 19 EB 180	
1-1/8" (30 mm) frame height for 1/2" to 1" - (13 mm to 25 mm) -thick coverings			
19-11/16 - 50	KL1AR 30 EB 50	KL1B 30 EB 50	
23-5/8 - 60	KL1AR 30 EB 60	KL1B 30 EB 60	
27-9/16 - 70	KL1AR 30 EB 70	KL1B 30 EB 70	
31-1/2 - 80	KL1AR 30 EB 80	KL1B 30 EB 80	
35-7/16 - 90	KL1AR 30 EB 90	KL1B 30 EB 90	
39-3/8 - 100	KL1AR 30 EB 100	KL1B 30 EB 100	
43-5/16 - 110	KL1AR 30 EB 110	KL1B 30 EB 110	
47-1/4 - 120	KL1AR 30 EB 120	KL1B 30 EB 120	

Schluter®-KERDI-LINE

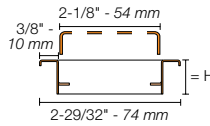
GRATE ASSEMBLY - CHROME




SOLID (A)



SQUARE (B)

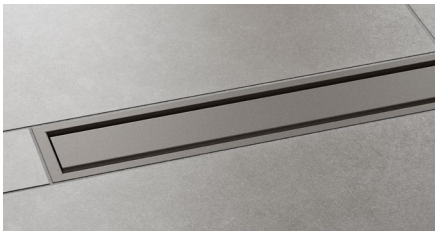


Grate assemblies - Chrome

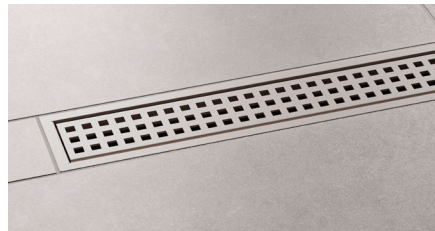
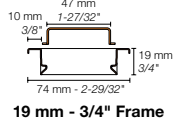
 3/4" (19 mm) frame height for 1/8" to 9/16" (3 mm to 15 mm) -thick coverings

Length = in. - cm	SOLID (A)	SQUARE (B)
	Item No.	Item No.
19-11/16 - 50	KL1AR 19 EP 50	KL1B 19 EP 50
23-5/8 - 60	KL1AR 19 EP 60	KL1B 19 EP 60
27-9/16 - 70	KL1AR 19 EP 70	KL1B 19 EP 70
31-1/2 - 80	KL1AR 19 EP 80	KL1B 19 EP 80
35-7/16 - 90	KL1AR 19 EP 90	KL1B 19 EP 90
39-3/8 - 100	KL1AR 19 EP 100	KL1B 19 EP 100
43-5/16 - 110	KL1AR 19 EP 110	KL1B 19 EP 110
47-1/4 - 120	KL1AR 19 EP 120	KL1B 19 EP 120

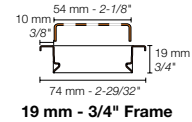
GRATE ASSEMBLY - TRENDLINE COLORS




SOLID (A)



SQUARE (B)



Grate assemblies - Textured color-coated stainless steel

 19 mm - 3/4" frame height for 3 mm to 15 mm - 1/8" to 9/16" -thick coverings

Length = cm - in.	SOLID (A)	SQUARE (B)
	Item No.	Item No.
50 - 19-11/16	KL1AR 19 + color* 50	KL1B 19 + color* 50
60 - 23-5/8	KL1AR 19 + color* 60	KL1B 19 + color* 60
70 - 27-9/16	KL1AR 19 + color* 70	KL1B 19 + color* 70
80 - 31-1/2	KL1AR 19 + color* 80	KL1B 19 + color* 80
90 - 35-7/16	KL1AR 19 + color* 90	KL1B 19 + color* 90
100 - 39-3/8	KL1AR 19 + color* 100	KL1B 19 + color* 100
110 - 43-5/16	KL1AR 19 + color* 110	KL1B 19 + color* 110
120 - 47-1/4	KL1AR 19 + color* 120	KL1B 19 + color* 120
130 - 51-3/16	KL1AR 19 + color* 130	KL1B 19 + color* 130
140 - 55-1/8	KL1AR 19 + color* 140	KL1B 19 + color* 140
150 - 59-1/16	KL1AR 19 + color* 150	KL1B 19 + color* 150
160 - 62-15/16	KL1AR 19 + color* 160	KL1B 19 + color* 160
170 - 66-7/8	KL1AR 19 + color* 170	KL1B 19 + color* 170
180 - 70-13/16	KL1AR 19 + color* 180	KL1B 19 + color* 180

*Color Codes



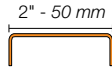
* To complete the item number, add the color code (e.g., KL1B 19 TSI 50).



GRATE ASSEMBLY - FRAMELESS TILEABLE



TILE (D)



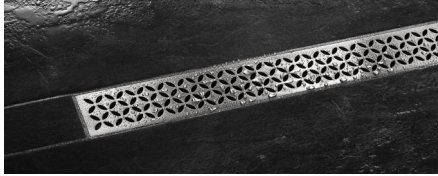
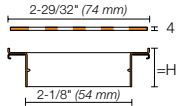
Grate assemblies - Frameless tileable			
Length = in. - cm	Item No.		
	TILE (D)		
	For use with center outlet channel body	For use with off-set outlet channel body	
19-11/16 - 50	KL1DRE 50	-	
23-5/8 - 60	KL1DRE 60	-	
27-9/16 - 70	KL1DRE 70	KL1DRO E 70	
31-1/2 - 80	KL1DRE 80	KL1DRO E 80	
35-7/16 - 90	KL1DRE 90	KL1DRO E 90	
39-3/8 - 100	KL1DRE 100	KL1DRO E 100	
43-5/16 - 110	KL1DRE 110	KL1DRO E 110	
47-1/4 - 120	KL1DRE 120	KL1DRO E 120	
51-3/16 - 130	KL1DRE 130	-	
55-1/8 - 140	KL1DRE 140	-	
59-1/16 - 150	KL1DRE 150	-	
62-15/16 - 160	KL1DRE 160	-	
66-7/8 - 170	KL1DRE 170	-	
70-13/16 - 180	KL1DRE 180	-	

Schluter®-KERDI-LINE-STYLE

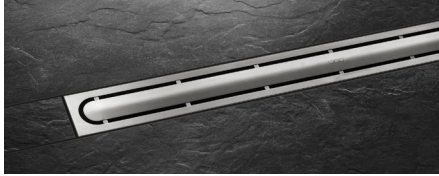
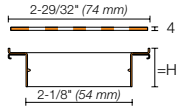
GRATE ASSEMBLY - BRUSHED STAINLESS STEEL STYLE DESIGNS



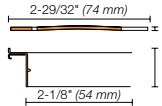
CURVE



FLORAL



PURE

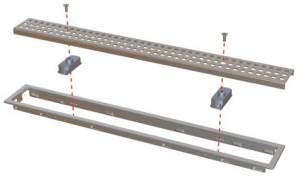


Grate assemblies - Brushed stainless steel			
29/32" - 23 mm frame height for 1/4" - 11/16" (6 - 18 mm) -thick coverings			
Length = in. - cm	CURVE	FLORAL	PURE
	Item No.	Item No.	Item No.
19-11/16 - 50	KL1IFF 23 EB 50	KL1IFE 23 EB 50	KL1IFG 23 EB 50
23-5/8 - 60	KL1IFF 23 EB 60	KL1IFE 23 EB 60	KL1IFG 23 EB 60
27-9/16 - 70	KL1IFF 23 EB 70	KL1IFE 23 EB 70	KL1IFG 23 EB 70
31-1/2 - 80	KL1IFF 23 EB 80	KL1IFE 23 EB 80	KL1IFG 23 EB 80
35-7/16 - 90	KL1IFF 23 EB 90	KL1IFE 23 EB 90	KL1IFG 23 EB 90
39-3/8 - 100	KL1IFF 23 EB 100	KL1IFE 23 EB 100	KL1IFG 23 EB 100
43-5/16 - 110	KL1IFF 23 EB 110	KL1IFE 23 EB 110	KL1IFG 23 EB 110
47-1/4 - 120	KL1IFF 23 EB 120	KL1IFE 23 EB 120	KL1IFG 23 EB 120

Schluter®-KERDI-LINE

PERFORATED GRATE WITH LOCKING MECHANISM

The Schluter®-KERDI-LINE SQUARE grate assembly (B) with 3/4" (19 mm) frame height is available with a locking mechanism for applications where tamper resistance is required.



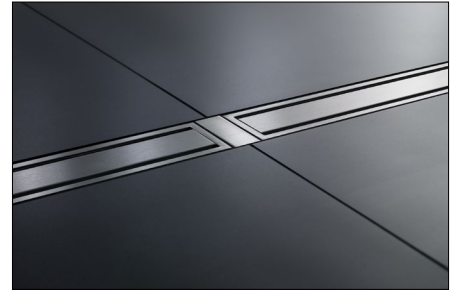
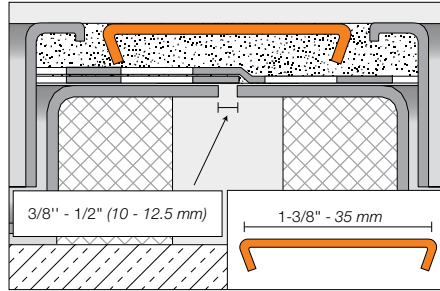
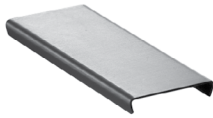
SQUARE grate assembly with locking mechanism		
Length = in. - cm		Item No.
19-11/16 - 50		KL1BL 19 EB 50
23-5/8 - 60		KL1BL 19 EB 60
27-9/16 - 70		KL1BL 19 EB 70
31-1/2 - 80		KL1BL 19 EB 80
35-7/16 - 90		KL1BL 19 EB 90
39-3/8 - 100		KL1BL 19 EB 100
43-5/16 - 110		KL1BL 19 EB 110
47-1/4 - 120		KL1BL 19 EB 120
51-3/16 - 130		KL1BL 19 EB 130
55-1/8 - 140		KL1BL 19 EB 140
59-1/16 - 150		KL1BL 19 EB 150
62-15/16 - 160		KL1BL 19 EB 160
66-7/8 - 170		KL1BL 19 EB 170
70-13/16 - 180		KL1BL 19 EB 180

Note: Driver bit for tamper-proof screws sold separately. Please see page 26.

COVER PLATE

Schluter®-KERDI-LINE-FC

Schluter®-KERDI-LINE-FC is a stainless steel cover plate for use with the Schluter®-KERDI-LINE linear shower drain to create a seamless look in applications where multiple drains are installed end to end. KERDI-LINE-FC is designed for use with either the SOLID or SQUARE grates.



Schluter®-KERDI-LINE-FC Cover Plate		
Brushed stainless steel	Chrome	Textured color-coated
Item No.	Item No.	Item No.
V / KLEB 35	V / KLEP 35	V / KL + color* 35

*Color Codes



* To complete the item number, add the color code (e.g., V / KL TSI 35).

STRAINER

The **Schluter®-KERDI-LINE Strainer** is a hair catcher customized to fit inside the KERDI-LINE channel body to trap and collect hair. Simple to remove and clean, the hair catcher fits discreetly into the drain to prevent hair clogs that can lead to blocked pipes.

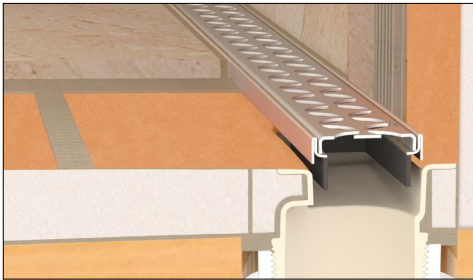
Note: The tabs of the drain strainer must be installed into the KERDI-LINE channel body v-grooves to ensure proper drainage.



Strainer for KERDI-LINE	
Item No.	Description
KL VZ SF	Strainer



Schluter®-KERDI-LINE-VARIO



FLANGE KIT

Contents



1x
Flange



1x
Downspout



1x
Flange support



1x ABS coupling
1x PVC coupling



4x
Inside corners



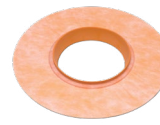
1x
Pipe seal
(20 mm - 3/4")



1x
Cleaning brush



2x
Outside corners



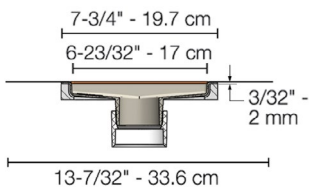
1x
Mixing valve seal
(114 mm - 4-1/2")



1x
Grate removal tool



1x
Construction cover



Flange kit
Item No.
KL VR 2 FLK

Note: Select the grate and channel assembly on the next page.



Schluter®-KERDI-LINE-VARIO

GRATE AND CHANNEL KIT

Contents

1x Grate
4 options:
• HERRINGBONE
• SLANT
• FLORAL
• SQUARE

2x End caps

1x Channel



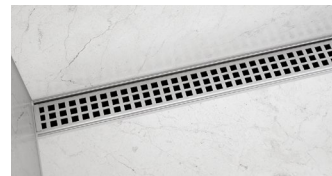
HERRINGBONE



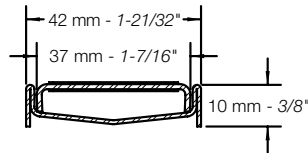
SLANT



FLORAL



SQUARE

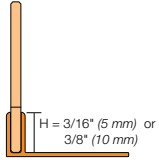


Grate and Channel Kit – Brushed stainless steel				
Length = cm - in.	HERRINGBONE	SLANT	FLORAL	SQUARE
	Item No.	Item No.	Item No.	Item No.
122 - 48	KL VRI D13 EB 122	KL VRI D14 EB 122	KL VRI D5 EB 122	KL VRI D3 EB 122
244 - 96	KL VRI D13 EB 244	KL VRI D14 EB 244	KL VRI D5 EB 244	KL VRI D3 EB 244

Grate and Channel Kit – Textured color-coated stainless steel				
Length = cm - in.	HERRINGBONE	SLANT	FLORAL	SQUARE
	Item No.	Item No.	Item No.	Item No.
122 - 48	KL VRI D13 + color* 122	KL VRI D14 + color* 122	KL VRI D5 + color* 122	KL VRI D3 + color* 122
244 - 96	KL VRI D13 + color* 244	KL VRI D14 + color* 244	KL VRI D5 + color* 244	KL VRI D3 + color* 244

***Color Codes**

* To complete the item number, add the color code (e.g., KL VRI D3 TSI 122).



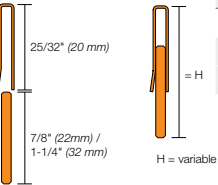
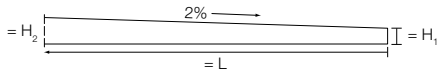
14.1 Schluter®-SHOWERPROFILE-SA **Two-part tapered edging profile**

Item No.	H = in. - mm	H ₁ = in. - mm	H ₂ = in. - mm
L = 47-1/4" - 1.2 m			
SPSA 50 EB/120	3/16 - 5	1/4 - 6	1-3/16 - 30
L = 63" - 1.6 m			
SPSA 50 EB/160	3/16 - 5	1/4 - 6	1-1/2 - 38
L = 78-3/4" - 2 m			
SPSA 50 EB/200	3/16 - 5	1/4 - 6	1-13/16 - 46

14.1 Schluter®-SHOWERPROFILE-SB **Two-part tapered edging profile**

Item No.	H = in. - mm	H ₁ = in. - mm	H ₂ = in. - mm
L = 47-1/4" - 1.2 m			
SPSB 100 EB/120	3/8 - 10	3/8 - 10	1-11/32 - 34
SPSB 125 EB/120	1/2 - 12.5	3/8 - 10	1-11/32 - 34
L = 63" - 1.6 m			
SPSB 100 EB/160	3/8 - 10	3/8 - 10	1-21/32 - 42
SPSB 125 EB/160	1/2 - 12.5	3/8 - 10	1-21/32 - 42
L = 78-3/4" - 2 m			
SPSB 100 EB/200	3/8 - 10	3/8 - 10	2 - 50
SPSB 125 EB/200	1/2 - 12.5	3/8 - 10	2 - 50

Note: Other sizes available. Contact Customer Service for price and availability.

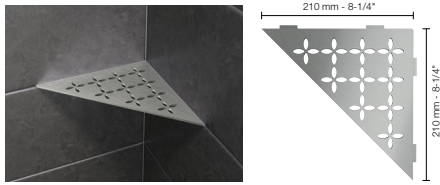


14.1 Schluter®-SHOWERPROFILE-R **Two-part wall transition profile**

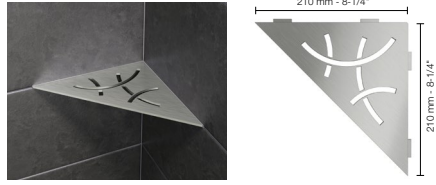
Item No.	Height
L = 39" - 1 m	
SPRA 23 EB/100	29/32" - 1-3/8" (23 - 35 mm)
SPRA 33 EB/100	1-5/16" - 1-25/32" (33 - 45 mm)
L = 55" - 1.4 m	
SPRA 23 EB/140	29/32" - 1-3/8" (23 - 35 mm)
SPRA 33 EB/140	1-5/16" - 1-25/32" (33 - 45 mm)

17.1 Schluter®-SHELF-E

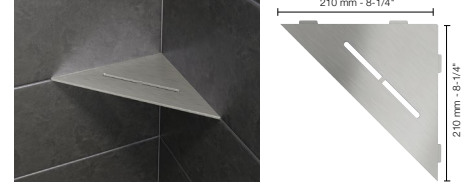
Triangular corner shelf



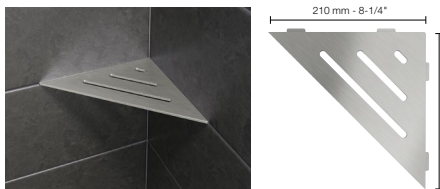
Schluter®-SHELF-E - FLORAL	
Item No.	Finish
SES1 D5 EB	Brushed stainless steel
SES1 D5 MBW	Matte white
SES1 D5 TSI	Ivory
SES1 D5 TSBG	Greige
SES1 D5 TSC	Cream
SES1 D5 TSOB	Bronze
SES1 D5 TSSG	Stone grey
SES1 D5 TSG	Pewter
SES1 D5 TSDA	Dark anthracite
SES1 D5 MGS	Matte black



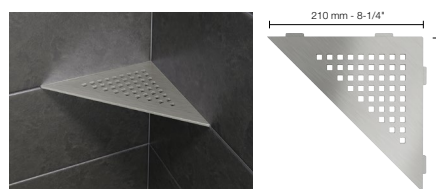
Schluter®-SHELF-E - CURVE	
Item No.	Finish
SES1 D6 EB	Brushed stainless steel
SES1 D6 MBW	Matte white
SES1 D6 TSI	Ivory
SES1 D6 TSBG	Greige
SES1 D6 TSC	Cream
SES1 D6 TSOB	Bronze
SES1 D6 TSSG	Stone grey
SES1 D6 TSG	Pewter
SES1 D6 TSDA	Dark anthracite
SES1 D6 MGS	Matte black



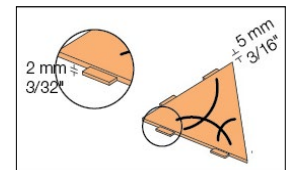
Schluter®-SHELF-E - PURE	
Item No.	Finish
SES1 D7 EB	Brushed stainless steel
SES1 D7 MBW	Matte white
SES1 D7 TSI	Ivory
SES1 D7 TSBG	Greige
SES1 D7 TSC	Cream
SES1 D7 TSOB	Bronze
SES1 D7 TSSG	Stone grey
SES1 D7 TSG	Pewter
SES1 D7 TSDA	Dark anthracite
SES1 D7 MGS	Matte black



Schluter®-SHELF-E - WAVE	
Item No.	Finish
SES1 D10 EB	Brushed stainless steel
SES1 D10 MBW	Matte white
SES1 D10 TSI	Ivory
SES1 D10 TSBG	Greige
SES1 D10 TSC	Cream
SES1 D10 TSOB	Bronze
SES1 D10 TSSG	Stone grey
SES1 D10 TSG	Pewter
SES1 D10 TSDA	Dark anthracite
SES1 D10 MGS	Matte black



Schluter®-SHELF-E - SQUARE	
Item No.	Finish
SES1 D3 EB	Brushed stainless steel
SES1 D3 MBW	Matte white
SES1 D3 TSI	Ivory
SES1 D3 TSBG	Greige
SES1 D3 TSC	Cream
SES1 D3 TSOB	Bronze
SES1 D3 TSSG	Stone grey
SES1 D3 TSG	Pewter
SES1 D3 TSDA	Dark anthracite
SES1 D3 MGS	Matte black



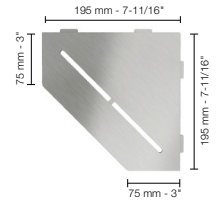
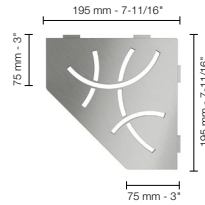
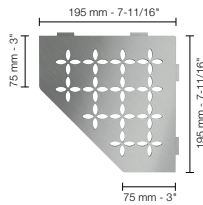
Stainless steel

Color-coated aluminum



17.1 Schluter®-SHELF-E

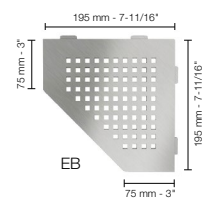
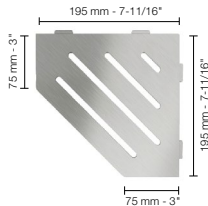
Pentagonal corner shelf



Schluter®-SHELF-E - FLORAL	
Item No.	Finish
SES2 D5 EB	Brushed stainless steel
SES2 D5 MBW	Matte white
SES2 D5 TSI	Ivory
SES2 D5 TSBG	Greige
SES2 D5 TSC	Cream
SES2 D5 TSOB	Bronze
SES2 D5 TSSG	Stone grey
SES2 D5 TSG	Pewter
SES2 D5 TSDA	Dark anthracite
SES2 D5 MGS	Matte black

Schluter®-SHELF-E - CURVE	
Item No.	Finish
SES2 D6 EB	Brushed stainless steel
SES2 D6 MBW	Matte white
SES2 D6 TSI	Ivory
SES2 D6 TSBG	Greige
SES2 D6 TSC	Cream
SES2 D6 TSOB	Bronze
SES2 D6 TSSG	Stone grey
SES2 D6 TSG	Pewter
SES2 D6 TSDA	Dark anthracite
SES2 D6 MGS	Matte black

Schluter®-SHELF-E - PURE	
Item No.	Finish
SES2 D7 EB	Brushed stainless steel
SES2 D7 MBW	Matte white
SES2 D7 TSI	Ivory
SES2 D7 TSBG	Greige
SES2 D7 TSC	Cream
SES2 D7 TSOB	Bronze
SES2 D7 TSSG	Stone grey
SES2 D7 TSG	Pewter
SES2 D7 TSDA	Dark anthracite
SES2 D7 MGS	Matte black



Schluter®-SHELF-E - WAVE	
Item No.	Finish
SES2 D10 EB	Brushed stainless steel
SES2 D10 MBW	Matte white
SES2 D10 TSI	Ivory
SES2 D10 TSBG	Greige
SES2 D10 TSC	Cream
SES2 D10 TSOB	Bronze
SES2 D10 TSSG	Stone grey
SES2 D10 TSG	Pewter
SES2 D10 TSDA	Dark anthracite
SES2 D10 MGS	Matte black

Schluter®-SHELF-E - SQUARE	
Item No.	Finish
SES2 D3 EB	Brushed stainless steel
SES2 D3 MBW	Matte white
SES2 D3 TSI	Ivory
SES2 D3 TSBG	Greige
SES2 D3 TSC	Cream
SES2 D3 TSOB	Bronze
SES2 D3 TSSG	Stone grey
SES2 D3 TSG	Pewter
SES2 D3 TSDA	Dark anthracite
SES2 D3 MGS	Matte black

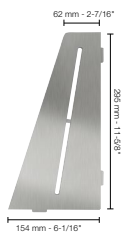
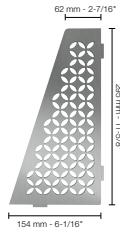
Stainless steel

Color-coated aluminum



17.1 Schluter®-SHELF-E

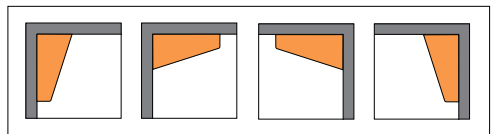
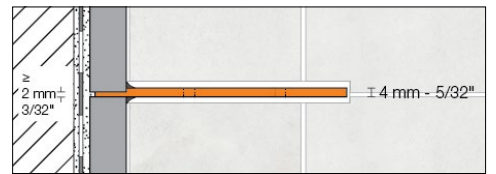
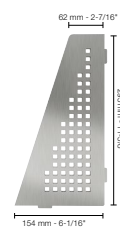
Quadrilateral corner shelf



Schluter®-SHELF-E - FLORAL	
Item No.	Finish
SES3 D5 EB	Brushed stainless steel
SES3 D5 MBW	Matte white
SES3 D5 TSI	Ivory
SES3 D5 TSBG	Greige
SES3 D5 TSC	Cream
SES3 D5 TSOB	Bronze
SES3 D5 TSSG	Stone grey
SES3 D5 TSG	Pewter
SES3 D5 TSDA	Dark anthracite
SES3 D5 MGS	Matte black

Schluter®-SHELF-E - CURVE	
Item No.	Finish
SES3 D6 EB	Brushed stainless steel
SES3 D6 MBW	Matte white
SES3 D6 TSI	Ivory
SES3 D6 TSBG	Greige
SES3 D6 TSC	Cream
SES3 D6 TSOB	Bronze
SES3 D6 TSSG	Stone grey
SES3 D6 TSG	Pewter
SES3 D6 TSDA	Dark anthracite
SES3 D6 MGS	Matte black

Schluter®-SHELF-E - PURE	
Item No.	Finish
SES3 D7 EB	Brushed stainless steel
SES3 D7 MBW	Matte white
SES3 D7 TSI	Ivory
SES3 D7 TSBG	Greige
SES3 D7 TSC	Cream
SES3 D7 TSOB	Bronze
SES3 D7 TSSG	Stone grey
SES3 D7 TSG	Pewter
SES3 D7 TSDA	Dark anthracite
SES3 D7 MGS	Matte black



Schluter®-SHELF-E - WAVE	
Item No.	Finish
SES3 D10 EB	Brushed stainless steel
SES3 D10 MBW	Matte white
SES3 D10 TSI	Ivory
SES3 D10 TSBG	Greige
SES3 D10 TSC	Cream
SES3 D10 TSOB	Bronze
SES3 D10 TSSG	Stone grey
SES3 D10 TSG	Pewter
SES3 D10 TSDA	Dark anthracite
SES3 D10 MGS	Matte black

Schluter®-SHELF-E - SQUARE	
Item No.	Finish
SES3 D3 EB	Brushed stainless steel
SES3 D3 MBW	Matte white
SES3 D3 TSI	Ivory
SES3 D3 TSBG	Greige
SES3 D3 TSC	Cream
SES3 D3 TSOB	Bronze
SES3 D3 TSSG	Stone grey
SES3 D3 TSG	Pewter
SES3 D3 TSDA	Dark anthracite
SES3 D3 MGS	Matte black

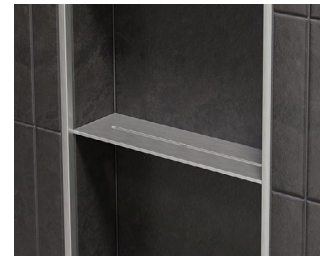
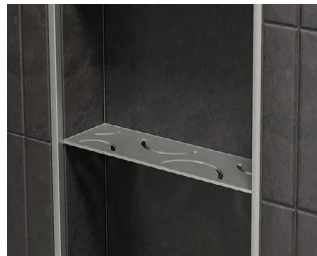
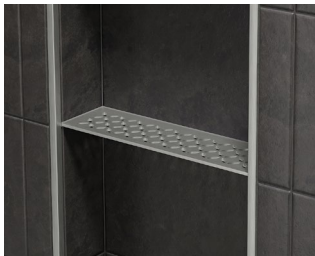
Stainless steel

Color-coated aluminum



17.1 Schluter®-SHELF-N

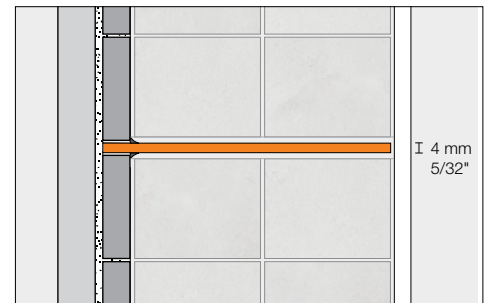
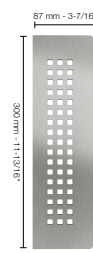
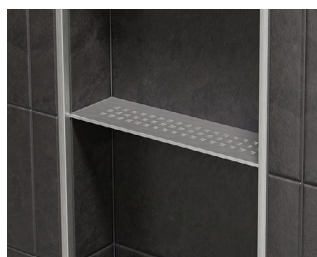
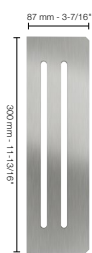
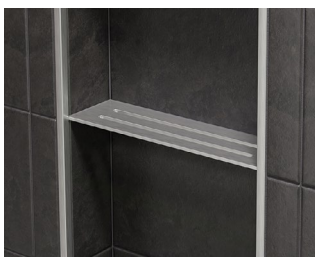
Niche shelf



Schluter®-SHELF-N - FLORAL	
Item No.	Finish
SNS1 D5 EB	Brushed stainless steel
SNS1 D5 MBW	Matte white
SNS1 D5 TSI	Ivory
SNS1 D5 TSBG	Greige
SNS1 D5 TSC	Cream
SNS1 D5 TSOB	Bronze
SNS1 D5 TSSG	Stone grey
SNS1 D5 TSG	Pewter
SNS1 D5 TSDA	Dark anthracite
SNS1 D5 MGS	Matte black

Schluter®-SHELF-N - CURVE	
Item No.	Finish
SNS1 D6 EB	Brushed stainless steel
SNS1 D6 MBW	Matte white
SNS1 D6 TSI	Ivory
SNS1 D6 TSBG	Greige
SNS1 D6 TSC	Cream
SNS1 D6 TSOB	Bronze
SNS1 D6 TSSG	Stone grey
SNS1 D6 TSG	Pewter
SNS1 D6 TSDA	Dark anthracite
SNS1 D6 MGS	Matte black

Schluter®-SHELF-N - PURE	
Item No.	Finish
SNS1 D7 EB	Brushed stainless steel
SNS1 D7 MBW	Matte white
SNS1 D7 TSI	Ivory
SNS1 D7 TSBG	Greige
SNS1 D7 TSC	Cream
SNS1 D7 TSOB	Bronze
SNS1 D7 TSSG	Stone grey
SNS1 D7 TSG	Pewter
SNS1 D7 TSDA	Dark anthracite
SNS1 D7 MGS	Matte black



Schluter®-SHELF-N - WAVE	
Item No.	Finish
SNS1 D10 EB	Brushed stainless steel
SNS1 D10 MBW	Matte white
SNS1 D10 TSI	Ivory
SNS1 D10 TSBG	Greige
SNS1 D10 TSC	Cream
SNS1 D10 TSOB	Bronze
SNS1 D10 TSSG	Stone grey
SNS1 D10 TSG	Pewter
SNS1 D10 TSDA	Dark anthracite
SNS1 D10 MGS	Matte black

Schluter®-SHELF-N - SQUARE	
Item No.	Finish
SNS1 D3 EB	Brushed stainless steel
SNS1 D3 MBW	Matte white
SNS1 D3 TSI	Ivory
SNS1 D3 TSBG	Greige
SNS1 D3 TSC	Cream
SNS1 D3 TSOB	Bronze
SNS1 D3 TSSG	Stone grey
SNS1 D3 TSG	Pewter
SNS1 D3 TSDA	Dark anthracite
SNS1 D3 MGS	Matte black

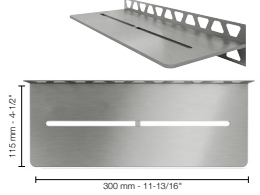
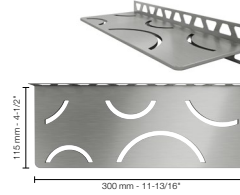
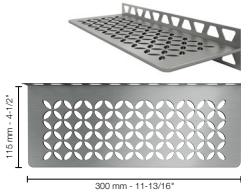
Stainless steel

Color-coated aluminum



17.1 Schluter®-SHELF-W

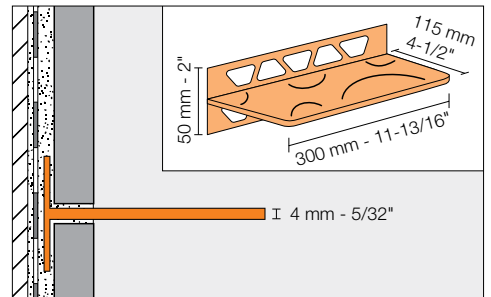
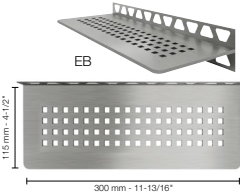
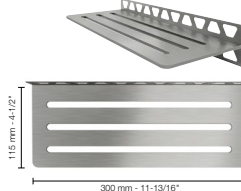
Wall shelf



Schluter®-SHELF-W - FLORAL	
Item No.	Finish
SWS1 D5 EB	Brushed stainless steel
SWS1 D5 MBW	Matte white
SWS1 D5 TSI	Ivory
SWS1 D5 TSBG	Greige
SWS1 D5 TSC	Cream
SWS1 D5 TSOB	Bronze
SWS1 D5 TSSG	Stone grey
SWS1 D5 TSG	Pewter
SWS1 D5 TSDA	Dark anthracite
SWS1 D5 MGS	Matte black

Schluter®-SHELF-W - CURVE	
Item No.	Finish
SWS1 D6 EB	Brushed stainless steel
SWS1 D6 MBW	Matte white
SWS1 D6 TSI	Ivory
SWS1 D6 TSBG	Greige
SWS1 D6 TSC	Cream
SWS1 D6 TSOB	Bronze
SWS1 D6 TSSG	Stone grey
SWS1 D6 TSG	Pewter
SWS1 D6 TSDA	Dark anthracite
SWS1 D6 MGS	Matte black

Schluter®-SHELF-W - PURE	
Item No.	Finish
SWS1 D7 EB	Brushed stainless steel
SWS1 D7 MBW	Matte white
SWS1 D7 TSI	Ivory
SWS1 D7 TSBG	Greige
SWS1 D7 TSC	Cream
SWS1 D7 TSOB	Bronze
SWS1 D7 TSSG	Stone grey
SWS1 D7 TSG	Pewter
SWS1 D7 TSDA	Dark anthracite
SWS1 D7 MGS	Matte black



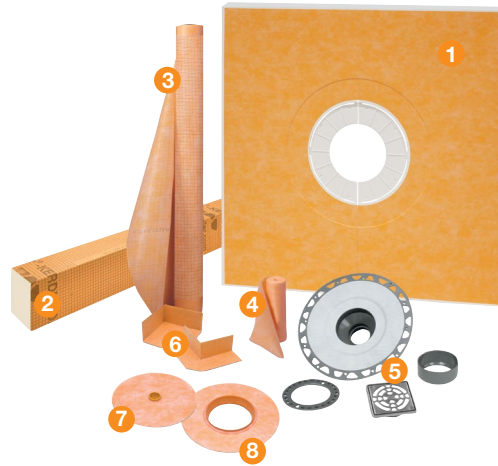
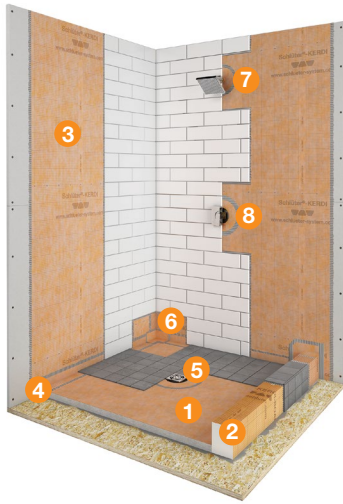
Schluter®-SHELF-W - WAVE	
Item No.	Finish
SWS1 D10 EB	Brushed stainless steel
SWS1 D10 MBW	Matte white
SWS1 D10 TSI	Ivory
SWS1 D10 TSBG	Greige
SWS1 D10 TSC	Cream
SWS1 D10 TSOB	Bronze
SWS1 D10 TSSG	Stone grey
SWS1 D10 TSG	Pewter
SWS1 D10 TSDA	Dark anthracite
SWS1 D10 MGS	Matte black

Schluter®-SHELF-W - SQUARE	
Item No.	Finish
SWS1 D3 EB	Brushed stainless steel
SWS1 D3 MBW	Matte white
SWS1 D3 TSI	Ivory
SWS1 D3 TSBG	Greige
SWS1 D3 TSC	Cream
SWS1 D3 TSOB	Bronze
SWS1 D3 TSSG	Stone grey
SWS1 D3 TSG	Pewter
SWS1 D3 TSDA	Dark anthracite
SWS1 D3 MGS	Matte black

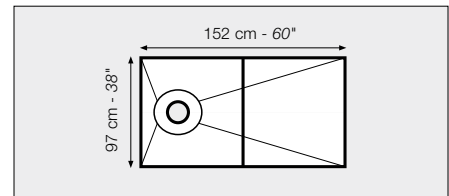
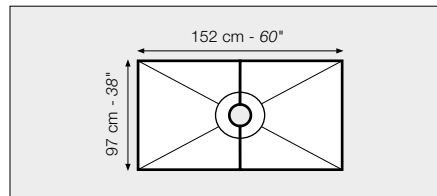
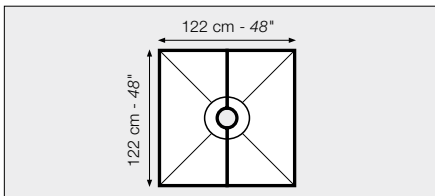
Stainless steel

Color-coated aluminum





Schluter®-KERDI-SHOWER-KIT			
Includes	Description	Quantity	
		48" x 48"	38" x 60"
1 KERDI-SHOWER-T/-TS/-TT	Shower Tray	1	1
2 KERDI-BOARD-SC	Shower Curb 48" x 6" x 4-1/2"	1	
	KERDI-BOARD-SC		2
3 KERDI 10 M	Waterproofing membrane 3' 3" x 33' = 108 ft²	1	1
4 KERDI-BAND	Waterproofing strip 5" x 33'	1	1
5 KERDI-DRAIN	Flange with 2" (50 mm) outlet and stainless steel grate (E)	1	1
6 KERDI-KERECK-F	Preformed waterproofing corners	4 inside and 2 outside	
7 KERDI-SEAL-PS	Pipe seal (3/4" - 20 mm)	1	
8 KERDI-SEAL-MV	Mixing valve seal (4-1/4" - 114 mm)	1	

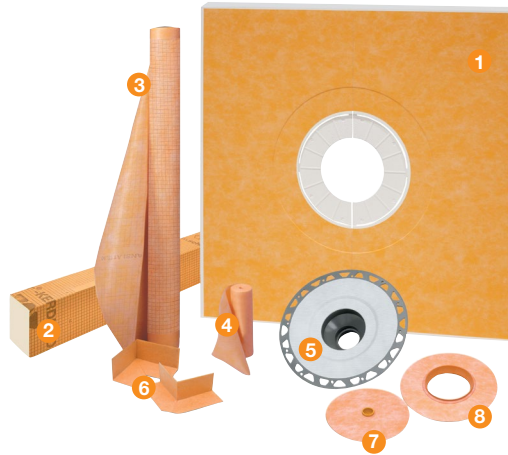
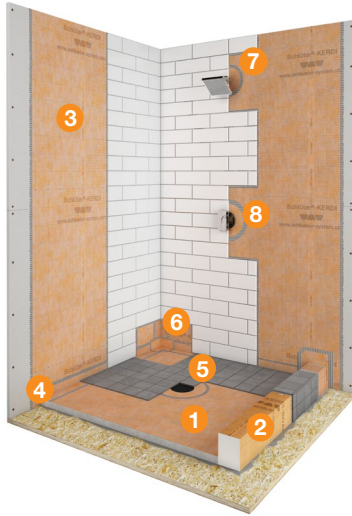


48" x 48" Kit - ABS or PVC			
Item No.	Drain Material	Grate finish	
KSK 1220 ABS E	ABS	E	
KSK 1220 PVC E	PVC	E	

38" x 60" Kit - ABS or PVC			
Item No.	Drain Material	Grate finish	
KSK 965 1525 ABS E	ABS	E	
KSK 965 1525 PVC E	PVC	E	

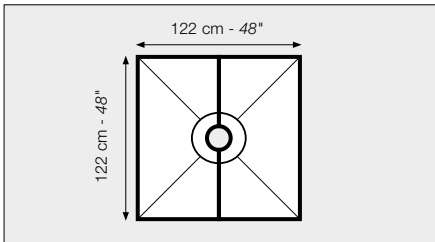
38" x 60" Kit off-center - ABS or PVC			
Item No.	Drain Material	Grate finish	
KSK 965 1525S ABSE	ABS	E	
KSK 965 1525S PVCE	PVC	E	

Note: Tray features off-center drain placement: 10" (25.4 cm) o.c. from end of tray.

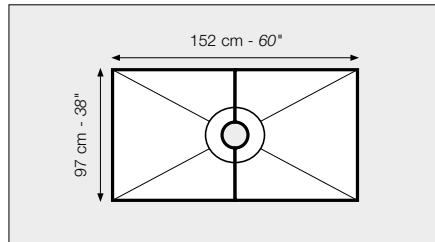


Schluter®-KERDI-SHOWER-KIT - WITHOUT THE GRATE

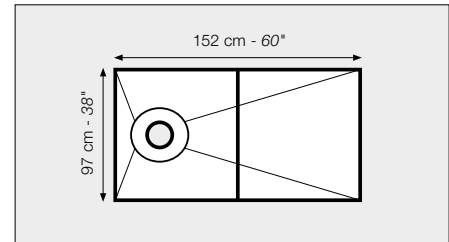
Includes	Description	Quantity			
		48" x 48"	38" x 60"	48" x 72"	72" x 72"
1 KERDI-SHOWER-T/-TS/-TT	Shower Tray	1	1	1	1
2 KERDI-BOARD-SC	Shower Curb 48" x 6" x 4-1/2"	1			
KERDI-BOARD-SC	Shower Curb 38" x 6" x 4-1/2"		2	2	2
3 KERDI 5 M	Waterproofing membrane 3' 3" x 16' 5" = 54 ft²				1
KERDI 10 M	Waterproofing membrane 3' 3" x 33' = 108 ft²	1	1		1
KERDI 12 M	Waterproofing membrane 3' 3" x 39' 4" = 128 ft²			1	
4 KERDI-BAND	Waterproofing strip 5" x 33'	1	1	2	2
5 KERDI-DRAIN Flange	Flange with 2" (50 mm) outlet	1	1	1	1
6 KERDI-KERECK-F	Preformed waterproofing corners	4 inside and 2 outside			
7 KERDI-SEAL-PS	Pipe seal (3/4" - 20 mm)	1			
8 KERDI-SEAL-MV	Mixing valve seal (4-1/2" - 114 mm)	1			



48" x 48" Kit - ABS or PVC	
Item No.	Drain Material
KSK 1220 ABS	ABS
KSK 1220 PVC	PVC

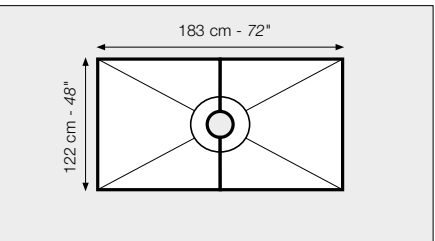


38" x 60" Kit - ABS or PVC	
Item No.	Drain Material
KSK 965 1525 ABS	ABS
KSK 965 1525 PVC	PVC

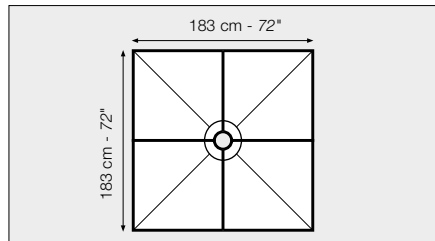


38" x 60" Kit off-center - ABS or PVC	
Item No.	Drain Material
KSK 965 1525S ABS	ABS
KSK 965 1525S PVC	PVC

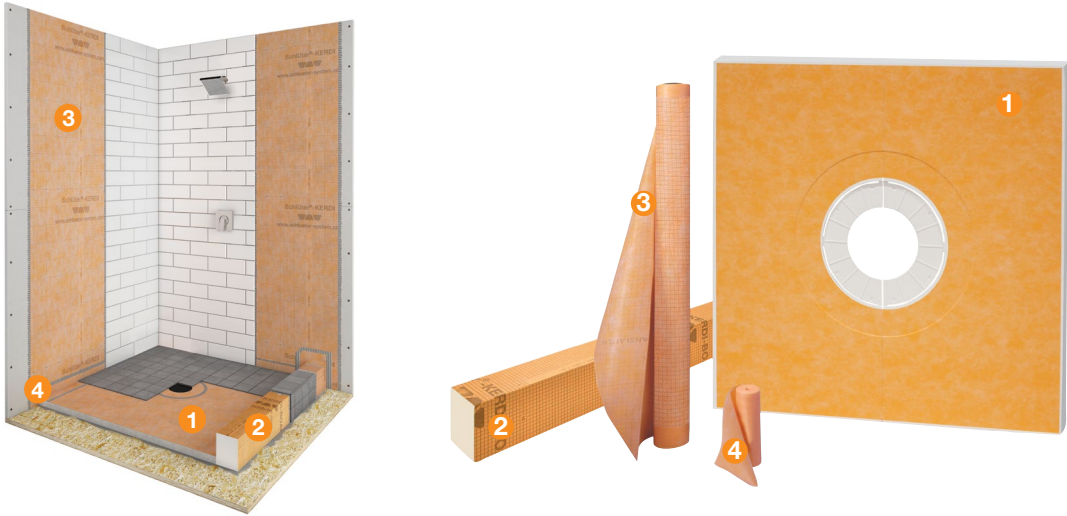
Note: Tray features off-center drain placement: 10" (25.4 cm) o.c. from end of tray.



48" x 72" Kit - ABS or PVC	
Item No.	Drain Material
KSK 1220 1830 ABS	ABS
KSK 1220 1830 PVC	PVC



72" x 72" Kit - ABS or PVC	
Item No.	Drain Material
KSK 1830 ABS	ABS
KSK 1830 PVC	PVC



Schluter®-KERDI-SHOWER-KIT - WITHOUT THE DRAIN

Includes	Description	Quantity			
		48" x 48"	38" x 60"	48" x 72"	72" x 72"
1 KERDI-SHOWER-T/-TS/-TT	Shower Tray	1	1	1	1
2 KERDI-BOARD-SC	Shower Curb 48" x 6" x 4-1/2"	1			
KERDI-BOARD-SC	Shower Curb 38" x 6" x 4-1/2"		2	2	2
3 KERDI 5 M	Waterproofing membrane 3' 3" x 16' 5" = 54 ft²				1
KERDI 10 M	Waterproofing membrane 3' 3" x 33' = 108 ft²	1	1		1
KERDI 12 M	Waterproofing membrane 3' 3" x 39' 4" = 128 ft²			1	
4 KERDI-BAND	Waterproofing strip 5" x 33'	1	1	2	2

Tray size	Item No.
48" x 48"	KSK 1220
38" x 60"	KSK 965 1525
38" x 60" off-center drain	KSK 965 1525S
48" x 72"	KSK 1220 1830
72" x 72"	KSK 1830



Schluter®-KERDI-TUBKIT			
Item No.	Includes	Description	Quantity
KKB7	1 KERDI 7M	Waterproofing membrane 3' 3" x 23' = 75 ft ²	1
	2 KERDI-BAND	Waterproofing strip 5" x 16' 5"	1
	3 KERDI-SEAL-PS	Pipe seal 3/4"	1
	4 KERDI-SEAL-MV	Mixing valve seal 4-1/2"	1
	5 KERDI-FIX	Sealing and bonding compound, bright white	1

Product Listings and Certifications Table

Schluter®-KERDI-DRAIN - Listings and Certifications								
Grates Flanges	Grate - 4" (100 mm)					Grate - 6" (150 mm)		
	CLASSIC Stainless steel (All finishes except EOB)	CLASSIC Stainless steel EOB	CONTOUR Anodized aluminum (All finishes)	Tileable	STYLE - PURE, CURVE and FLORAL Stainless steel (All finishes)	Stainless steel		
						CLASSIC 6E	CLASSIC ROUND 6RE	Cover 6CE
2" PVC	1	-	1	1	1	1	1	2
2" ABS	1	-	1	1	1	1	1	2
2" PVC Horizontal	1	-	1	1	1	1	1	2
2" ABS Horizontal	1	-	1	1	1	1	1	2
2" Stainless steel	1	-	1	1	1	1	1	2
2" Stainless steel Threaded	1	-	1	1	1	1	1	2
3" PVC	-	-	-	-	-	1	1	2
3" ABS	-	-	-	-	-	1	1	2
3" Stainless steel	-	-	-	-	-	1	1	2
5-1/2" Adaptor	3	-	3	3	3	-	-	-
7-1/2" Adaptor	-	-	-	-	-	3	3	-

Schluter®-KERDI-LINE						
Bonding Flange	Grate					
	A	B	D	FLORAL (E)*	CURVE (F)*	PURE (G)*
Center outlet - 19-11/16" - 47-1/4" (50 cm - 120 cm)	1	1	1	1	1	1
Center outlet - 51-3/16" - 70-13/16" (130 cm - 180 cm)	1	1	1	1	1	1
Off-set outlet - 27-9/16" - 47-1/4" (70 cm - 120 cm)	1	1	1	1	1	1

Various configurations of KERDI-DRAIN and KERDI-LINE are listed by ICC-ES (Report No. PMG-1204), UPC®, and CSA as shown in the table above.

1 - Listed by ICC-ES (Report No. PMG-1204), UPC®, and CSA.

2 - Listed by CSA

3 - Listed by ICC-ES (Report No. PMG-1204) and UPC®.

For copies of these documents, please contact Schluter®-Systems at 800-472-4588 (USA) or 800-667-8746 (Canada) or by email at info@schluter.com. Links to the documents can also be accessed at www.schluter.com.

WARRANTIES

Schluter-Systems products and systems are covered under our warranty program, as applicable. For details and to access Schluter Systems' warranty documents:

Visit www.schluter.com/warranties

Or scan here



To obtain hard copies, please contact Customer Service at: 800-472-4588 (USA) or 800-667-8746 (Canada).



Schluter Systems L.P. 📍 194 Pleasant Ridge Rd. | Plattsburgh, NY | 12901-5841 📞 800-472-4588 📠 800-477-9783
Schluter Systems (Canada) Inc. 📍 21100 chemin Ste-Marie | Ste-Anne-de-Bellevue, QC | H9X 3Y8 📞 800-667-8746 📠 877-667-2410
🌐 schluter.com

This technical data sheet is subject to change without notice. Please visit Schluter.com for the latest version.