





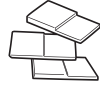















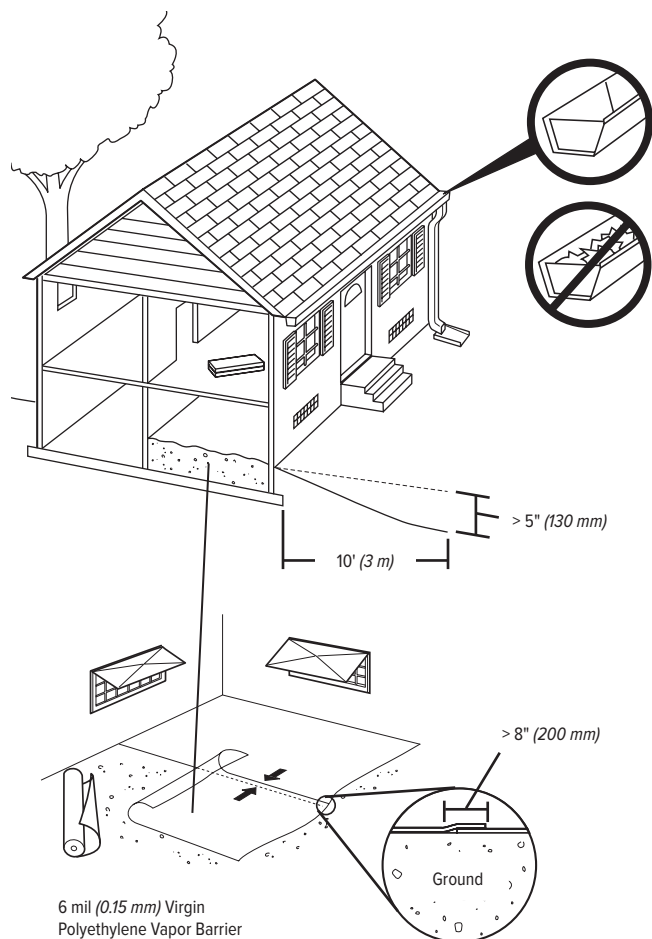
# PERGO EverCraft®

## Pergo EverCraft® Install Instructions

### Tools Required for Installation

Common Tools					Other Tools and Supplies		
							
Safety Glasses	Dust Mask	Safety Gloves	Pencil	Tape Measure	Tapping Block	5 mm (3/16") Spacers	Moisture Meter
							
Level	Pull Bar	Hammer	Chisel	Utility Knife	Silicone Sealant	Felt Furniture Pads	PE Foam Backer Rod
							
Hand Saw	Jigsaw	Circular Saw	40T Carbide-Tipped Saw Blade				

### Jobsite



### Site Requirements

This product is a durable floor covering, not intended as structural material. This product requires a clean, dry, secure subfloor that meets building codes.

The following requirements are not intended to supersede federal, state, or local building codes, but, as with many other interior finish products, may require modifying existing structural components for successful installation. Owner assumes responsibility for compliance with all building codes.

This product is suitable for use in climate-controlled (35%–65% RH and 60°F–85°F) indoor installations only and should not be installed over any floor with a sump pump or in a room with a floor drain. This product can be installed above, on, or below grade.

A moisture test is required to determine if high moisture exists in the subfloor.

Concrete subfloors must be tested in compliance with ASTM F3311 which includes F2659, F1869, and F2170. Acceptable results at the TIME OF INSTALLATION must be recorded and documented and are as follows:

- ATSM F2659 – A meter calibrated for concrete qualified by gravimetric testing must be used. Moisture content must be  $\leq 4.0\%$  MC.
- ASTM F1869 – Calcium chloride testing to determine water vapor emissions (*MVER*)  $\leq 5$  pounds / 24 hours / 1,000 square feet.
- ASTM F2170 – In-situ probe testing to confirm the Relative Humidity (*RH*) is  $\leq 80\%$ .

If any of these test results are outside of requirements, the flooring should not be installed until the concrete subfloor is within the proper range.

## Pergo EverCraft® Install Instructions

Wood Subfloors must be tested and acceptable results at the TIME OF INSTALLATION must be recorded and documented and are as follows:

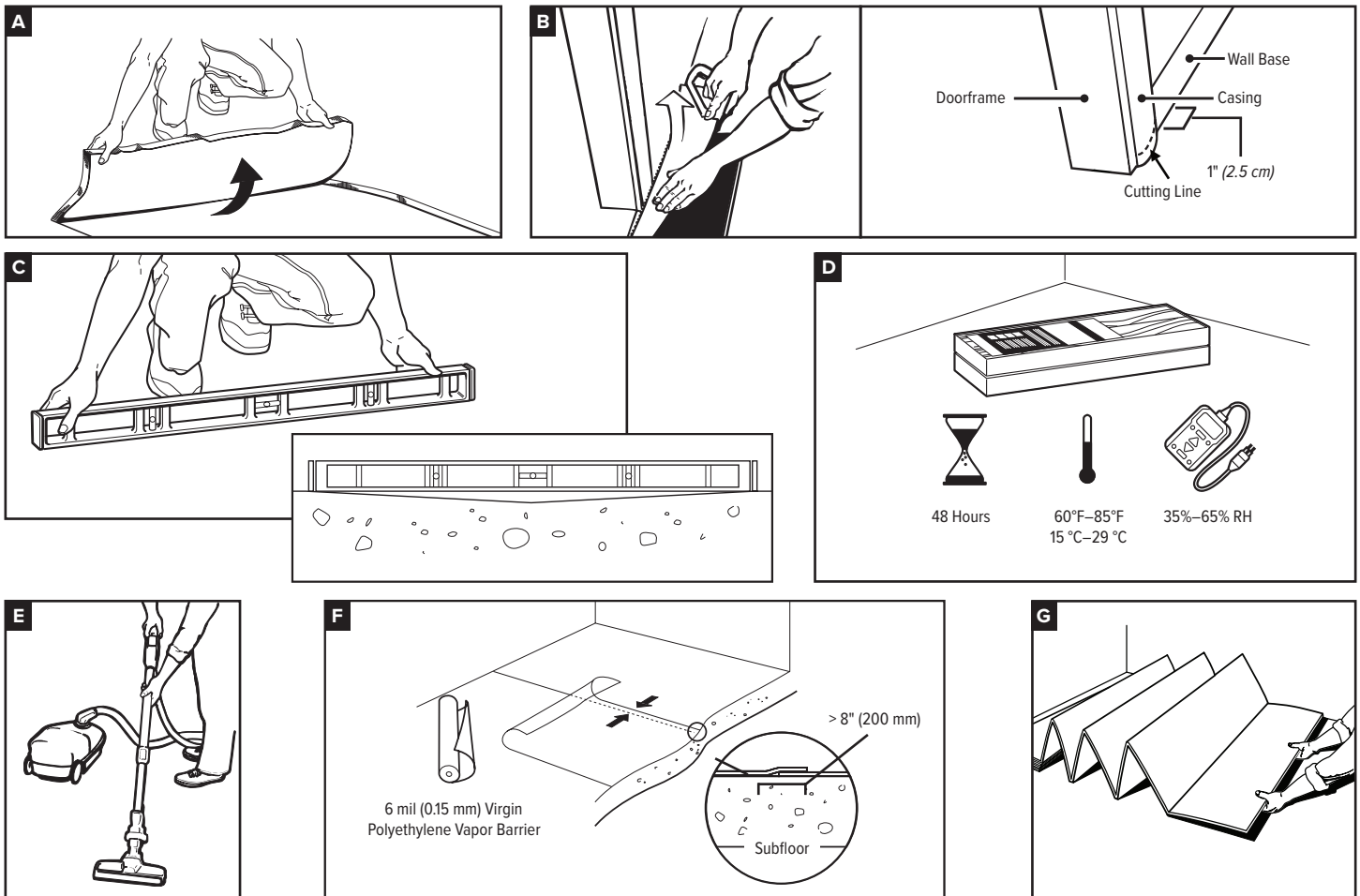
- A pinless (*dielectric*) or pin-type (*electrical resistance*) meter must be used to perform and record one moisture test per 100 square feet.
- Moisture content of wood subfloors must be  $\leq 12\%$  MC.
- Variance between subfloor and this flooring may not exceed 4%. If the moisture content of the subfloor and this flooring are outside of these tolerances, the flooring should not be installed until it is within the proper range.

If the moisture content of the subfloor and this flooring are outside of these tolerances, the flooring should not be installed until it is within the proper range. Acceptable jobsite conditions, including relative humidity and subfloor moisture conditions, must be maintained throughout the lifetime of the flooring.

This product is installed as a floating floor and requires the use of T-moldings in doorways less than 32 inches (*0.81 m*) or if the installation changes directions through the doorway (*regardless of doorway size*) and in rooms 50 feet (*15.24 m*) or larger in length or width. Floor movement must not be constrained by glue, nails, screws, hardware, or other fixed obstructions.

This product must be installed in accordance with these installation instructions.

### Site and Material Preparation



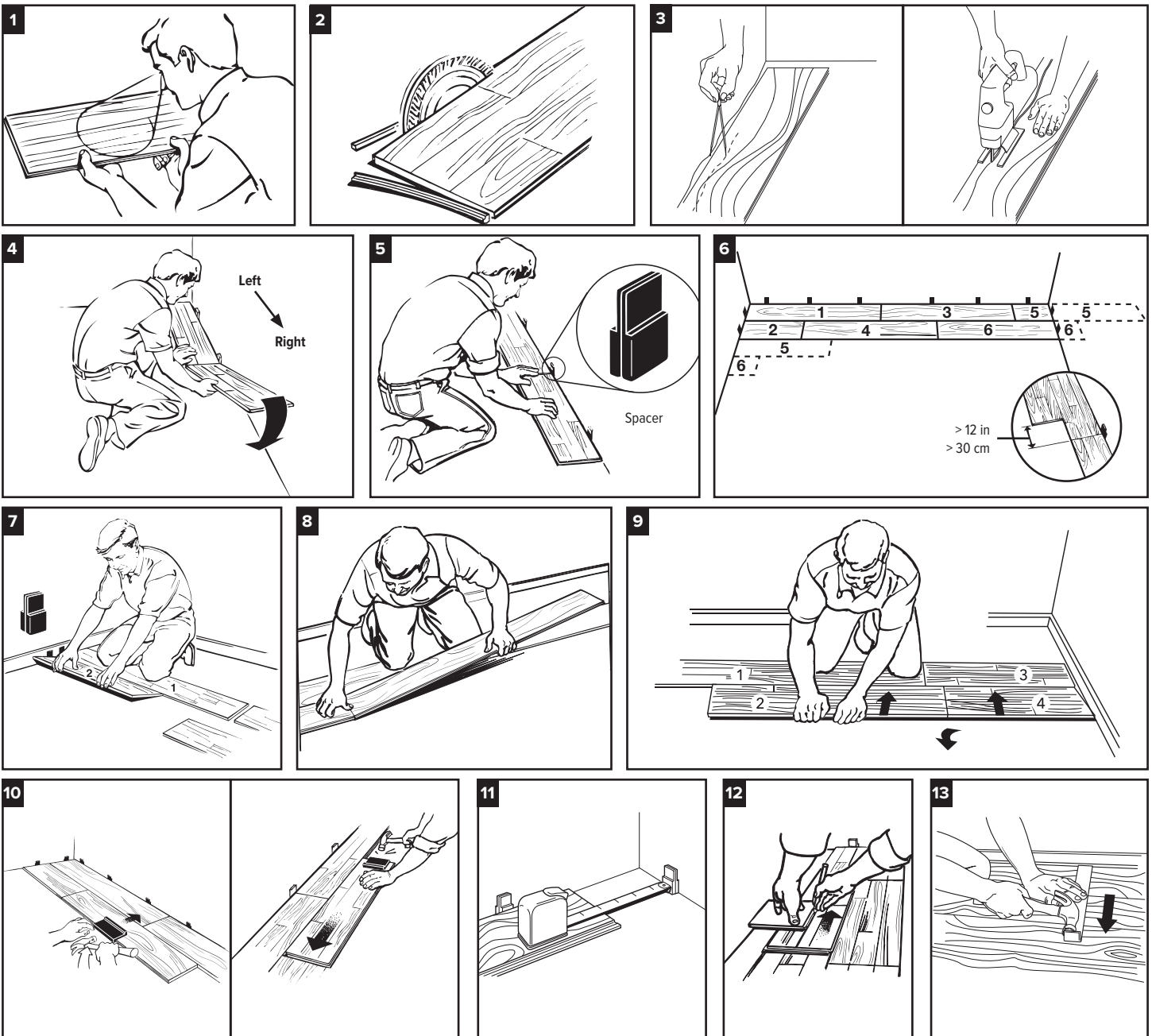
- Remove carpet and padding. Also remove any wood flooring installed on concrete. Do not remove products unless they are asbestos-free.
- Undercut doorframe and wall base. Slide the flooring at least 1/4 inch underneath the doorframe and wall base. Also leave a concealed 3/8-inch minimum expansion space under each.
- Remove bumps or peaks in subfloor and fill depressions with floor leveling compound to ensure no more than 3/16-inch unevenness per 10-foot span.

# PERGO EverCraft®

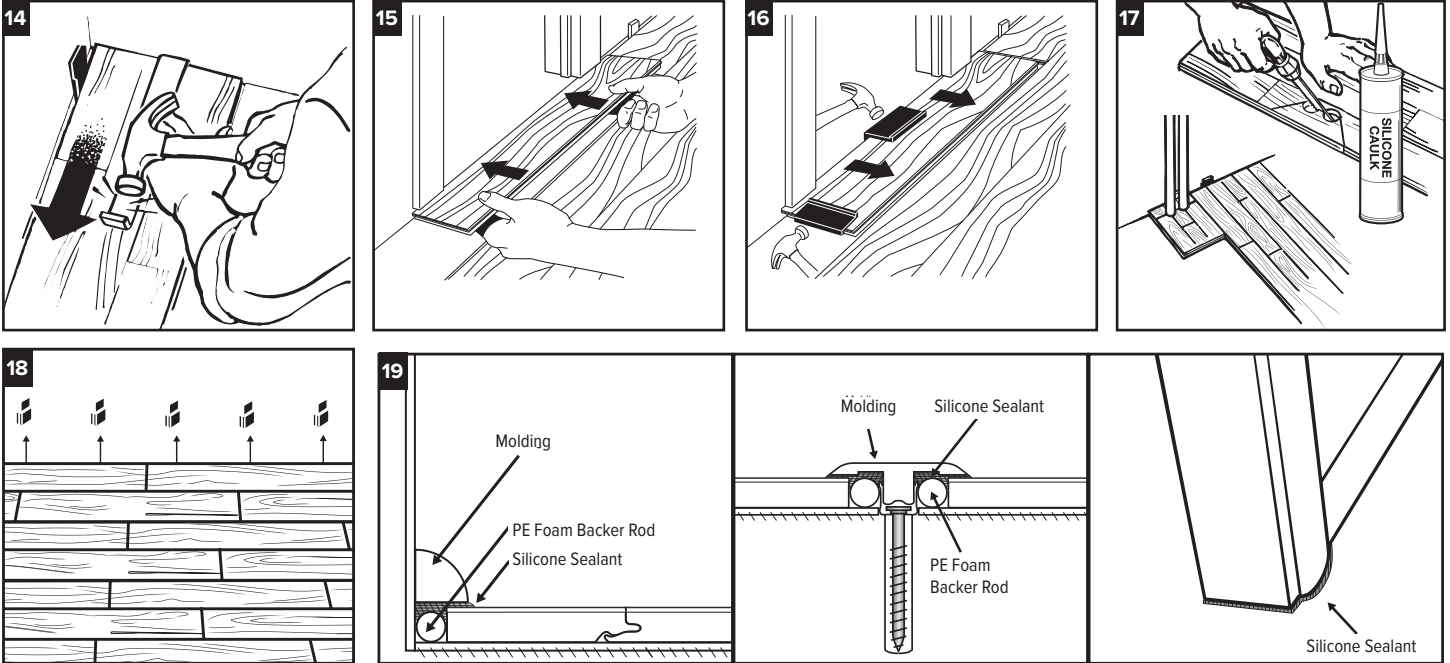
## Pergo EverCraft® Install Instructions

- D. If flooring is delivered at a moisture content and temperature that coincides with the expected in-use (e.g., normal living) conditions of the facility, and these conditions are maintained, no on-site acclimation is required. Otherwise, acclimate for 48 hours at 35%–65% RH and 60°F–85°F.
- E. Clean debris from subfloor before installation.
- F. For concrete subfloors, install vapor barrier with overlapped seams of 8 inches or more.
- G. For planks without attached underlayment, install over single layer of underlayment appropriate for laminate floors.  
For planks with attached underlayment, it is acceptable to install Pergo Gold® underlayment (Lowe's part #670312) prior to flooring installation if desired. Make sure to follow the Pergo Gold® installation instructions, taking special care to seal all foam edges with sealing tape and repair all rips and perforations in the underlayment vapor barrier.

### Flooring Installation



## Pergo EverCraft® Install Instructions



1. Inspect each plank. Floor should be installed by blending planks from several cartons at the same time to ensure good color and shade mixture throughout the installation.
2. For the first row along straight walls, remove the tongue on all long-side joints and on the short side of the first plank only.
3. For uneven walls, trace contour on the tongue side of plank and cut.
4. Assemble the first row, tongue side toward wall. Insert the end tongue into the end groove and rotate downward to assemble. Keep the planks aligned and the joints closed.
5. Two spacers thick side to thick side = 3/8 inch.
6. Provide a 3/8-inch space for expansion on all sides. First piece must be at least 8 inches long. Start new rows with pieces trimmed from previous row. Ensure at least a 12-inch end joint offset.
7. At a slight angle, insert the tongue of plank 2 into the groove of plank 1 until the plank edges meet, and then rotate down until the joints lock.
8. Join the short end of the plank first. There will be a gap on the long-side joints when the plank is rotated down.
9. Raise the outside edge of the plank, as well as the first plank in row 2, upward approximately 1 inch. Maintain this angle as you push the plank in until the plank edges meet. Rotate the plank downward until the joint locks. Repeat these steps to complete the installation. Installation Tip: Place a carton of planks across the end of the row being installed to keep installed planks in place during installation.
10. Alternate Tap Method: Align the tongues into the grooves of the long and short sides of the planks. Install the long side first by placing a tapping block no closer than 8 inches from either end and tap lightly along the long side until the joint is closed tightly. Then tap the end into a locked position using the tapping block. Note: Uneven tapping or use of excessive force may damage the joint.
11. Ensure there will be a 3/8-inch gap (after the joint is closed) between the plank and the wall for expansion.
12. For the last row, align the plank to be used on top of the second-to-last row. Using a full-width plank as a spacer, trace the wall contour and cut the plank.
13. For the last row, install the long-side tongue into the groove with the end joint aligned. Using a pull bar and hammer, work evenly along the length of the plank and lightly tap the joint closed.
14. After tapping the long-side joint closed, tap the short side closed using a tapping block or a pull bar.

## Pergo EverCraft® Install Instructions

### Installation Under Doorway Casing

15. Slide plank under pre-cut door casing.
16. Tap the long-side joint closed first. Then tap the end joint closed.

### Installation Around Fixed Objects *(such as pipes)*

17. Allow 3/8-inch expansion space around pipes or other fixed objects.

### Finishing the Installation

18. Remove all spacers.
19. The entire perimeter of the installation must be sealed with the WetProtect® molding system, PerimeterSeal™ tape, or 100% silicone sealant in accordance with the installation instructions. For sections where the WetProtect molding system or PerimeterSeal tape cannot be used, seal the perimeter with 100% silicone sealant as follows. DO NOT use acrylic sealant.
  - First, fill all expansion spaces with 3/8-inch compressible PE foam backer rod and cover with silicone sealant.
  - Prior to installing the moldings, apply silicone sealant to the portion of the molding or transition that will contact directly with flooring surface.
  - Install moldings and immediately wipe away any excess silicone sealant.
  - Apply silicone at connections to doorframes or any other fixed objects.

### Care and Cleaning

Place felt floor protectors under legs of moveable furniture. Chair casters should be rubber — not plastic or metal. Chair pads should be used under chair casters. Place walk-off mats at entrances. Dust mop as primary cleaning method. Occasionally wet mop with water only, using a well-wrung-out mop; DO NOT pour liquid directly on floor or use an excessively wet mop that will puddle or leave moisture standing on the floor. If needed, use a solution of 1 cup of vinegar per gallon of water OR 1/3 cup non-sudsing ammonia per gallon of water. DO NOT use detergents, abrasive cleaners, soaps, waxes, or polishes. A residential steam mop may be used provided the steam is applied to a microfiber pad and not applied directly to the floor. Make sure to set the temperature of the steam mop to the appropriate setting for this product, or the lowest setting. Steam mop in the length direction of the planks only. Use correct hard surface vacuum tools. DO NOT use rotating beater bars, floor scrubbers, jet mops, or similar products. Wipe up spills immediately. DO NOT allow topical moisture to remain on the floor longer than the time specified in the product warranty.

#### WARNING:

Drilling, sawing, sanding or machining wood products can expose you to wood dust, a substance known to the state of California to cause cancer. Avoid inhaling wood dust or use a dust mask or other safeguards for personal protection. For more information, go to [www.P65Warnings.ca.gov/wood](http://www.P65Warnings.ca.gov/wood).

#### IMPORTANT HEALTH NOTICE FOR MINNESOTA RESIDENTS ONLY:

THESE BUILDING MATERIALS EMIT FORMALDEHYDE. EYE, NOSE, AND THROAT IRRITATION, HEADACHE, NAUSEA AND A VARIETY OF ASTHMA-LIKE SYMPTOMS, INCLUDING SHORTNESS OF BREATH, HAVE BEEN REPORTED AS A RESULT OF FORMALDEHYDE EXPOSURE. ELDERLY PERSONS AND YOUNG CHILDREN, AS WELL AS ANYONE WITH A HISTORY OF ASTHMA, ALLERGIES, OR LUNG PROBLEMS, MAY BE AT GREATER RISK. RESEARCH IS CONTINUING ON THE POSSIBLE LONG-TERM EFFECTS OF EXPOSURE TO FORMALDEHYDE. REDUCED VENTILATION MAY ALLOW FORMALDEHYDE AND OTHER CONTAMINANTS TO ACCUMULATE IN THE INDOOR AIR. HIGH INDOOR TEMPERATURES AND HUMIDITY RAISE FORMALDEHYDE LEVELS. WHEN A HOME IS TO BE LOCATED IN AREAS SUBJECT TO EXTREME SUMMER TEMPERATURES, AN AIR-CONDITIONING SYSTEM CAN BE USED TO CONTROL INDOOR TEMPERATURE LEVELS. OTHER MEANS OF CONTROLLED MECHANICAL VENTILATION CAN BE USED TO REDUCE LEVELS OF FORMALDEHYDE AND OTHER INDOOR AIR CONTAMINANTS. IF YOU HAVE ANY QUESTIONS REGARDING THE HEALTH EFFECTS OF FORMALDEHYDE, CONSULT YOUR DOCTOR OR CALL LOCAL HEALTH DEPARTMENT.