

Item #
5075-84-L

Product Family Name:
Vantage

Category:
Wall Sconce

Certification
5009378

Patents:

Notes:

UPC Code:
747396125121

Finish:
Brushed Nickel

Category Type:
LED Bath

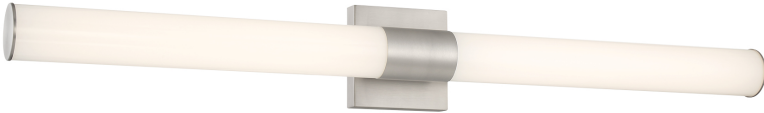


Image File Name: 5075-84-L.jpg



MEASUREMENTS

Width:	Length:	Height:	Extension:
36		5	3.63
Height Adjustable:	Min Overall Height:	Max Overall Height:	Slope:
No			No
Wire Length:	Chain Length:	Safety Cable Included:	Net Weight:
7"		No	2.65
Canopy Width:	Canopy Height:	Canopy Length:	Center to Bottom:
			2.5
Backplate Width:	Backplate Height:	Center to Top:	
5.0	5.0	2.5	

No. of Bulbs:	Light Type:			
1	Z10 LED			
Max Bulb Wattage:	Socket:			
30	Y11 LED MODULE			
Dimmable:	Ballast:	Rated Life Hours:	Photocell Included:	Bulb/LED Included:
No		50000	No	Y
Bulb/LED Included:	Color Temp.:	CRI:	Initial Lumens:	Delivered Lumens:
Yes	3000	96	2903.2	2735.9



SHIPPING

Description:	Material:
WHITE	PC LENS
Part No.:	Quantity:
	2
Width:	Height:
18.0	2.5
	Length:
	2.25

Carton Width:	Carton Height:	Carton Length:	
6.88	6.0	38.0	
Carton Weight:	Carton Cubic Feet:	Small Package Shippable:	
3.85	0.908	Yes	
Master Pack Width:	Master Pack Height:	Master Pack Length:	
Master Pack Weight:	Master Cubic Feet:	Multi-Pack:	Master Pack:
		1	1



LED

ADA
Compliant

Damp
Location

Title 24

ETL
Intertek



WARNING: Handling this product can expose you to chemicals including lead, which is known to the State of California to cause cancer and birth defects or other reproductive harm. Wash hands with soap and water after installing, handling, cleaning or otherwise touching this product. For more information go to: www.P65Warnings.ca.gov.

For additional information, please contact Customer Care: 1-800-221-7977 | Product depicted on this spec sheet is protected by United States Federal and/or State laws including US Patent, Trademark and/or Copyright and unfair competition laws. Unauthorized reproduction or use carries severe legal penalties.