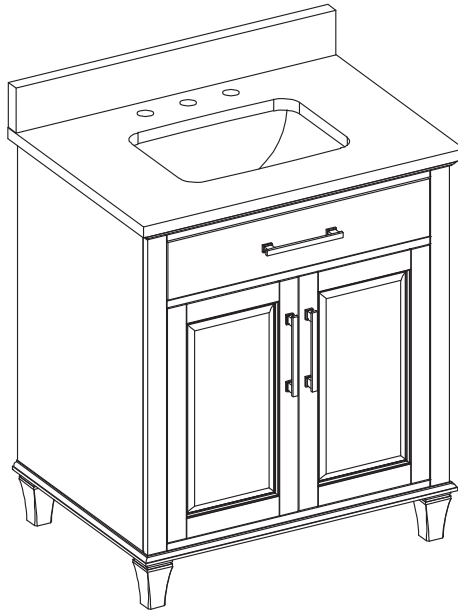


welcoming • sophisticated • inspiring



MODEL NUMBER	DESCRIPTION
1789VA-30-201-900-UM	AR 30-IN BROOKVIEW WHITE VANITY W/CARRARA MARBLE TOP
1789VA-30-201-901-UM	AR 30-IN BROOKVIEW WHITE VANITY W/ENGINEERED WHITE TOP
1789VA-30-201-925-UM	AR 30-IN BROOKVIEW WHITE VANITY W/ENGINEERED CARRARA TOP
1789VA-30-201-926-UM	AR 30-IN BROOKVIEW WHITE VANITY W/ENGINEERED CALACATTA TOP
1789VA-30-322-900-UM	AR 30-IN BROOKVIEW PINE VANITY W/CARRARA MARBLE TOP
1789VA-30-322-901-UM	AR 30-IN BROOKVIEW PINE VANITY W/ENGINEERED WHITE TOP
1789VA-30-322-925-UM	AR 30-IN BROOKVIEW PINE VANITY W/ENGINEERED CARRARA TOP
1789VA-30-322-926-UM	AR 30-IN BROOKVIEW PINE VANITY W/ENGINEERED CALACATTA TOP
1789VA-30-323-900-UM	AR 30-IN BROOKVIEW ROYAL NAVY VANITY W/CARRARA MARBLE TOP
1789VA-30-323-901-UM	AR 30-IN BROOKVIEW ROYAL NAVY VANITY W/ENGINEERED WHITE TOP
1789VA-30-323-925-UM	AR 30-IN BROOKVIEW ROYAL NAVY VANITY W/ENGINEERED CARRARA TOP
1789VA-30-323-926-UM	AR 30-IN BROOKVIEW ROYAL NAVY VANITY W/ENGINEERED CALACATTA TOP
1789VA-30-325-900-UM	AR 30-IN BROOKVIEW TRUE GRAY VANITY W/CARRARA MARBLE TOP
1789VA-30-325-901-UM	AR 30-IN BROOKVIEW TRUE GRAY VANITY W/ENGINEERED WHITE TOP
1789VA-30-325-925-UM	AR 30-IN BROOKVIEW TRUE GRAY VANITY W/ENGINEERED CARRARA TOP
1789VA-30-325-926-UM	AR 30-IN BROOKVIEW TRUE GRAY VANITY W/ENGINEERED CALACATTA TOP

30-IN VANITY WITH TOP

MODEL #1789VA-30-201-900-UM; 1789VA-30-201-901-UM; 1789VA-30-201-925-UM; 1789VA-30-201-926-UM;
1789VA-30-322-900-UM; 1789VA-30-322-901-UM; 1789VA-30-322-925-UM; 1789VA-30-322-926-UM;
1789VA-30-323-900-UM; 1789VA-30-323-901-UM; 1789VA-30-323-925-UM; 1789VA-30-323-926-UM;
1789VA-30-325-900-UM; 1789VA-30-325-901-UM; 1789VA-30-325-925-UM; 1789VA-30-325-926-UM

ATTACH YOUR RECEIPT HERE

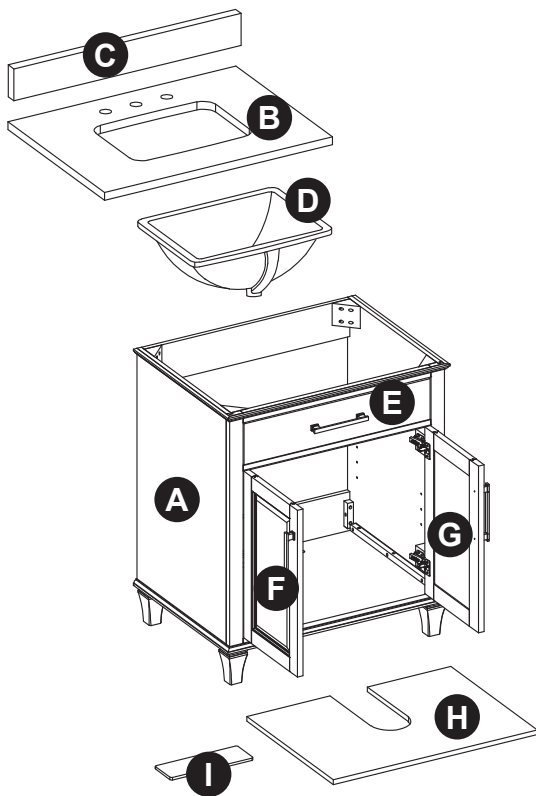
Serial Number _____ Purchase Date _____

Questions, problems, missing parts? Before returning to your retailer, call our customer service department at 866-439-9800, 8 a.m. - 8 p.m., EST, Monday - Sunday.

TABLE OF CONTENTS

Package Contents.....	3
Hardware Contents.....	3
Safety Instructions.....	3
Preparation.....	4
Assembly or Installation Instructions.....	4
Care and Maintenance.....	11
Warranty.....	11
Replacement Parts List.....	12

PACKAGE CONTENTS (Undermount Sink)



PART	DESCRIPTION	QUANTITY	CARTON
A	Vanity	1	Box 2 of 3
B	Top	1	Box 1 of 3
C	Backsplash	1	
D	Sink	1	Box 3 of 3
E	Tip-out Door (preassembled to vanity (A))	1	Box 2 of 3
F	Left Door (preassembled to vanity (A))	1	
G	Right Door (preassembled to vanity (A))	1	
H	Shelf	1	
I	Floor Plumbing Cutout Lid	1	

HARDWARE CONTENTS (NOT SHOWN ACTUAL SIZE)

AA



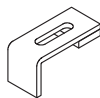
Touch Up Pen
Qty. 1

GG



Bolt
Qty. 4

HH



Sink Bracket
Qty. 4

II



Nut
Qty. 4

JJ



Lock Washer
Qty. 4

KK



Wrench
Qty. 1

SAFETY INSTRUCTIONS

Please read and understand this entire manual before attempting to assemble, operate or install the product.

WARNING

- There are several assembly steps, including unpacking, that require two adults.

CAUTION

- Follow these instructions closely, take your time, and use care while assembling this vanity.

KEEP THESE INSTRUCTIONS FOR FUTURE REFERENCE.

PREPARATION

Before beginning assembly of product, make sure all parts are present. Compare parts with package contents list and hardware contents list. If any part is missing or damaged, do not attempt to assemble the product.

Estimated Installation Time: 45 minutes (24 hours for silicone caulk to dry).

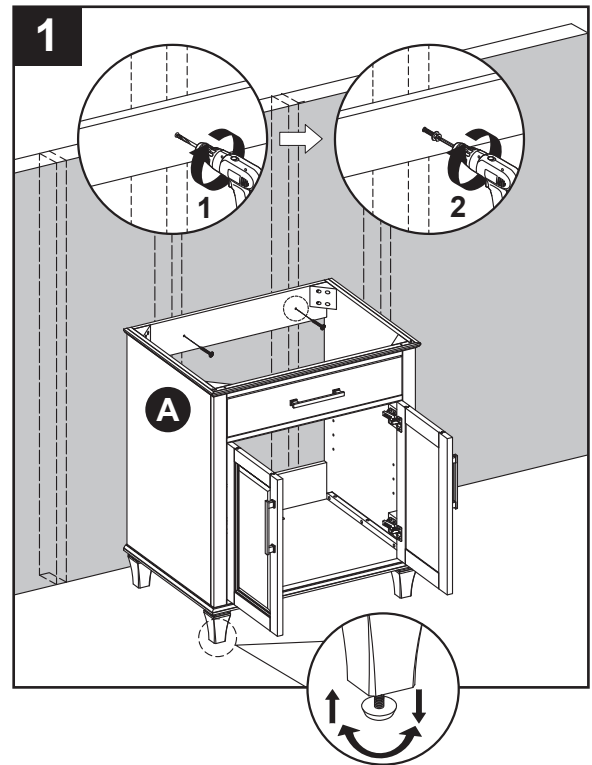
Tools Required for Installation (not included): Phillips screwdriver, utility knife or scissors, silicone caulk, power drill with drill bit, measuring tape, level

INSTALLATION INSTRUCTIONS (Undermount Sink)

Note: Clean area where the vanity (A) will be permanently located prior to beginning installation, ensuring the vanity (A) will not interfere with any water supply and drain lines once mounted.

1. With two people, carefully place vanity (A) against the wall in its final location. While holding the vanity base firmly against the wall, use the pre-assembled levelers on the bottom of each leg of the vanity (A) to level the item. Twisting the levelers counterclockwise will raise the height of the vanity (A), and twisting them clockwise will lower the vanity.

Once the vanity is in place, against the wall, and level from front to back and side to side, drill a hole through the vanity mounting area and into the wall studs (as illustrated in diagram 1). Using appropriate mounting hardware (not included), secure the vanity (A) to a wall stud. If possible, secure the vanity (A) to two wall studs for increased stability.

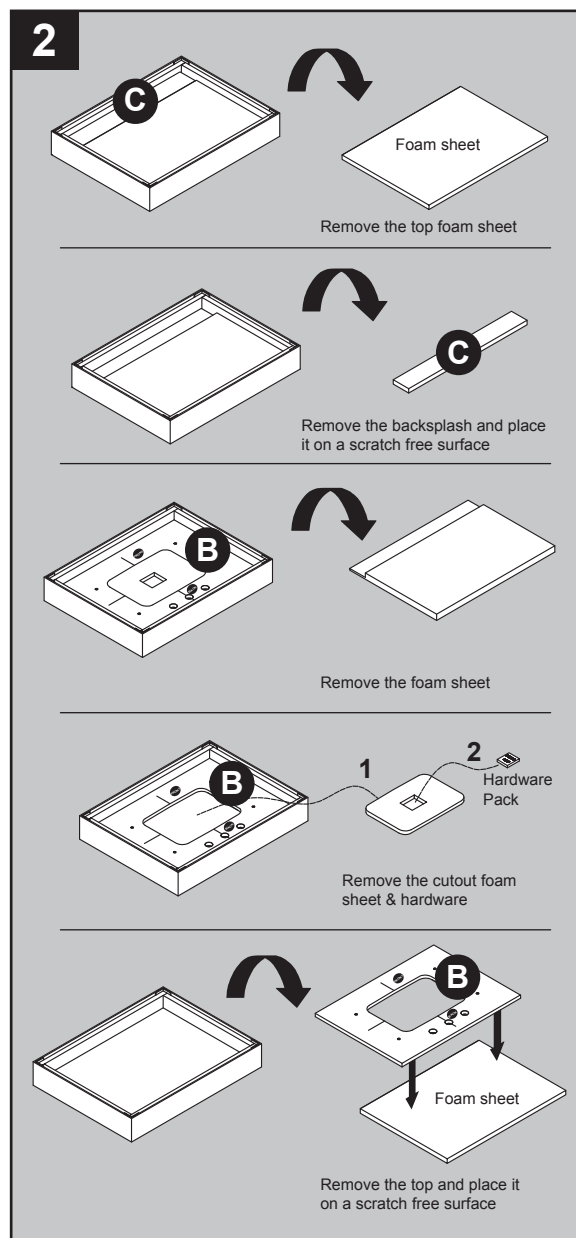


WARNING

Vanity (A) **MUST** be secured to wall.

INSTALLATION INSTRUCTIONS (Undermount Sink)

2. Take out the top (B) and backsplash (C) according to the steps indicated by the drawings on the right, and place them face down onto a scratch free surface such as a foam sheet that came in the packaging.

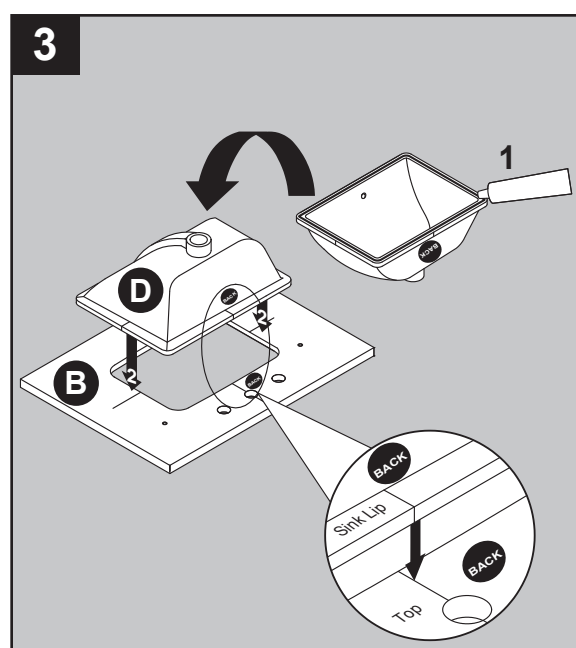


3. Apply silicone caulk (not included) to the top edge of sink (D). With the help of another adult, lower the sink onto the back side of the stone top.

Make sure the sink over-flow hole is facing the front of stone top.

Be sure to align the sink well with the stone top cut out allowing for equal stone overhang on the front, back and sides of the ceramic sink (D).

Note: To install the sink onto the top correctly, ensure that the two "BACK" stamps on the sink and the top are aligned on the same sides. Use the guide lines marked on the sink and bottom side of stone top to assist with sink location.

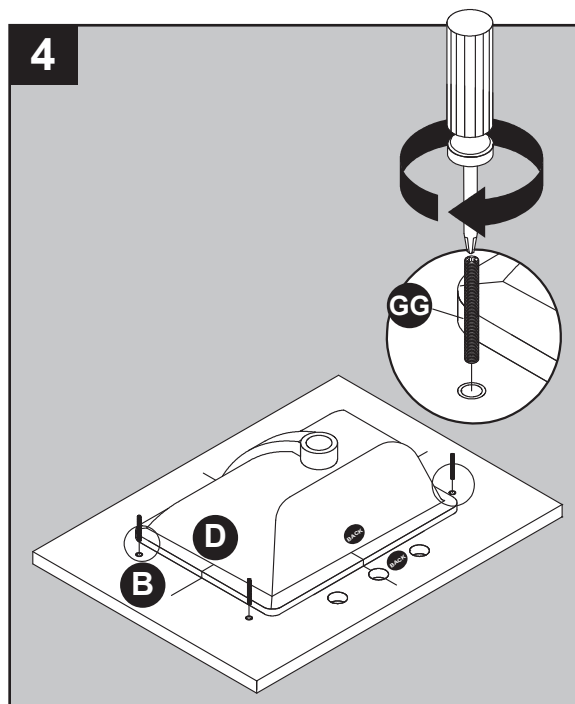


INSTALLATION INSTRUCTIONS (Undermount Sink)

4. Screw bolts (GG) into the threaded holes of stone top (B).

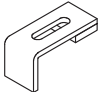
Hardware Used


GG Bolt  x 4





5. Lower the sink brackets (HH) over the bolts (GG) and allow to rest on the sink lip. Adjust location of bracket to firmly grasp sink lip. Lower lock washers (JJ) over bolts (GG) and secure with nuts (II). Hand tighten nuts (II) with included wrench (KK). **DO NOT OVER TIGHTEN!**
 Tip: Check that the sink placement is well centered front to back and side to side of the stone top cut out before allowing the silicone caulk to dry. If the sink is not centered well unscrew sink clamps, re-adjust the sink position and re-tighten the sink brackets.

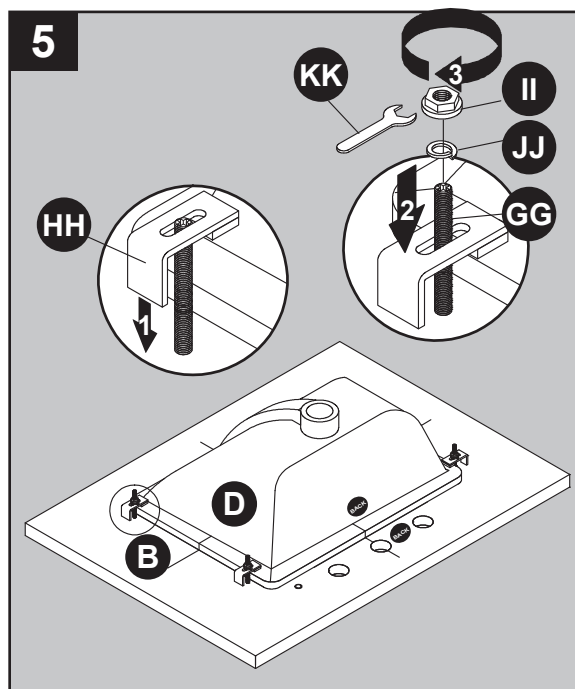
Hardware Used

HH Sink bracket  x 4

II Nut  x 4

JJ Lock Washer  x 4

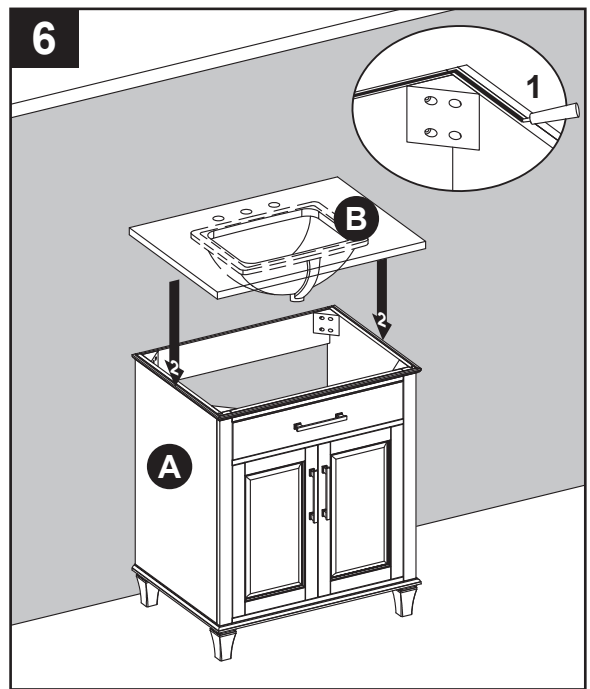
KK Wrench  x 1



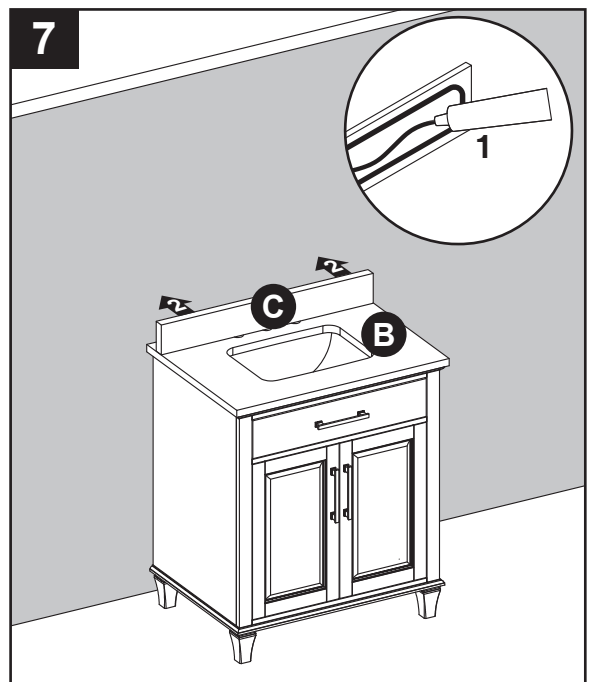
INSTALLATION INSTRUCTIONS (Undermount Sink)

Note: At this stage it may be easier to install the faucet and drain kit (not included) to top (B) per the manufacturer's instructions, before moving on to Step 6.

6. Apply stain free silicone caulk (not included) to the top edge of vanity (A). With the help of another adult, gently lower top (B) onto the vanity (A). Wipe away any excess caulk with a soft cloth, and wait approximately 24 hours for it to dry.



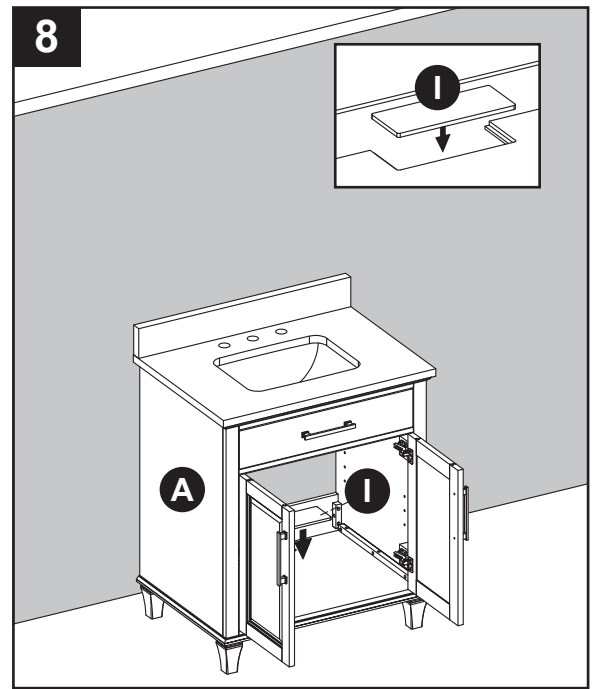
7. Apply silicone caulk (not included) to unpolished side and bottom of backsplash (C). Position backsplash (C) on top (B) and against wall. Clean any excess caulk before allowing to dry.



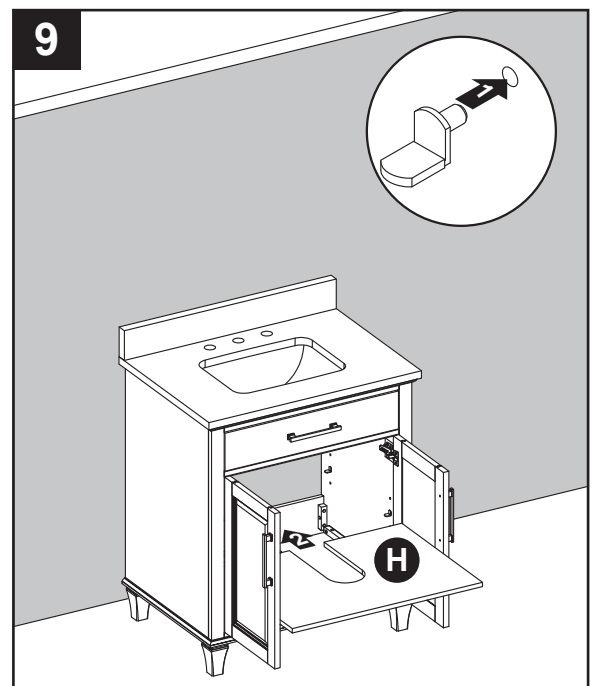
INSTALLATION INSTRUCTIONS (Undermount Sink)

8. The back of the vanity is open for accessibility for drain(s) and water line(s) hookup. If your plumbing comes out of the back wall, insert the floor plumbing cutout lid (I), as shown in Illustration 8. This will close the hole and increase your storage space.

If your plumbing comes out of the floor, this hole provides accessibility for drain and water line hookup.



9. From the front of the assembly, insert shelf pins at desired height, ensuring they are level. Place shelf (H) on top of shelf pins.



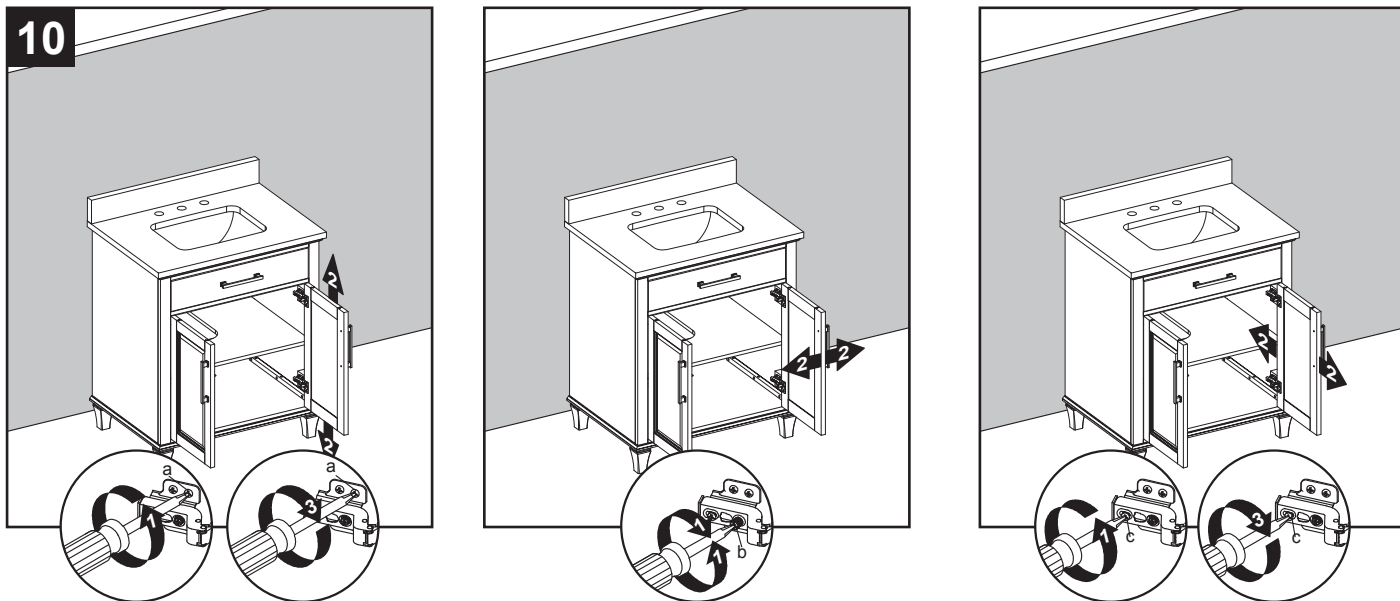
INSTALLATION INSTRUCTIONS (Undermount Sink)

10. If you need to adjust the doors, do so in the following manner.

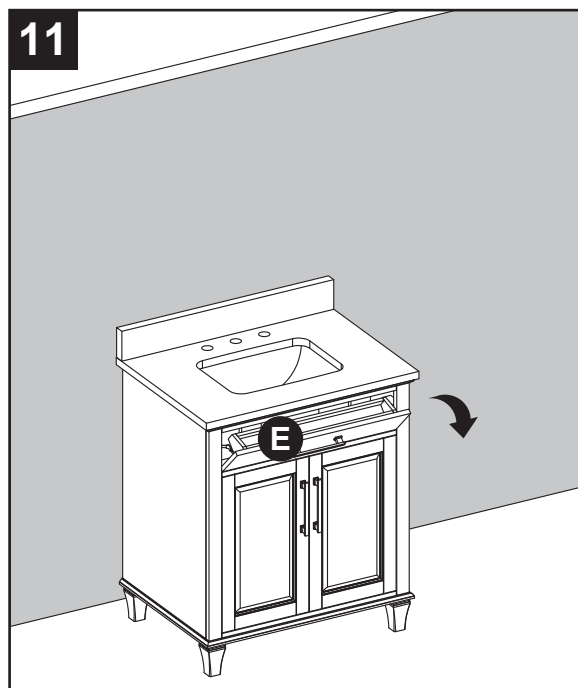
To adjust door up or down, loosen screws (a) on both hinges, adjust door, and retighten screws.

To adjust door left or right, turn screws (b) on both hinges, in and out.

To adjust door in or out, loosen screws (c) on both hinges, adjust door, and retighten screws.



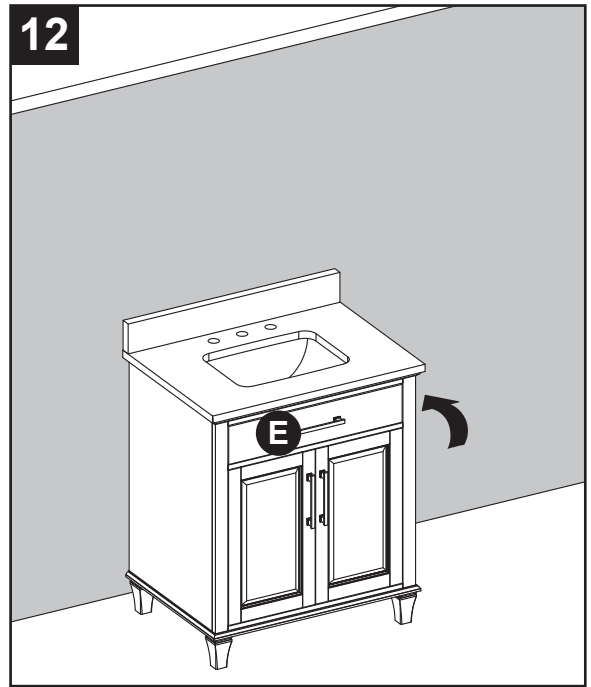
11. Gently open the top tip-out door (E).



INSTALLATION INSTRUCTIONS (Undermount Sink)

12. Gently push up to close the top tip-out door (E).

Assembly is now complete. Install desired faucet and drain assemblies (neither included) per the manufacturers' instructions to complete the installation.



CARE AND MAINTENANCE

- Dust the vanity regularly with a soft, non-lint producing cloth or household dusting product.
- You can clean the vanity with a gentle, non-abrasive household cleaner.
- Make sure to dry the wood immediately with a soft cloth or towel.
- The stone top can be cleaned using standard marble cleaning agents available at your local supplier.
- Tips for using touch-up pen (AA): For scratches, stroke in direction of scratch; for worn areas, stroke in direction of wood grain. Rub off excess colorant promptly with a soft cloth.

IMPORTANT

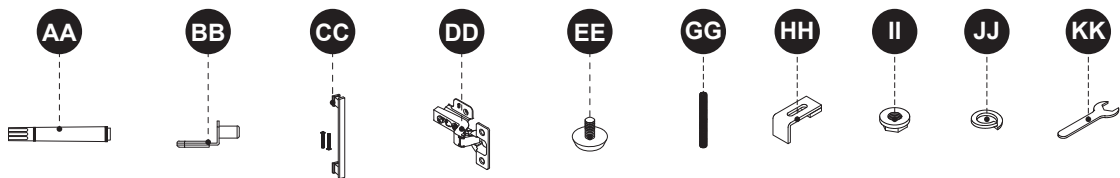
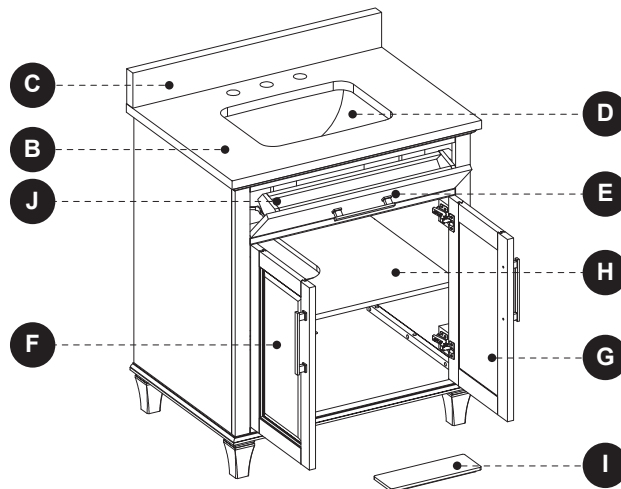
- Shade variations and patterns are an inherent characteristic of stone (e.g. granite, marble, engineered stone). Stone tops will vary from product to product. Use caution placing items such as soap or any fragranced material on the stone surface. Use a soap dish, coaster or similar item to protect the surface if placing any soap or fragranced products on the stone.
- If soap or fragranced products come in contact with the stone top, rinse the surface with water and dry using a soft non-abrasive cloth.
- **WARNING:** Must use cleaning agents safe for stone. Check your cleaning agents use restrictions before using on any stone. Damage to the stone may result. Vanity Manufacturer not responsible for damage caused by improper cleaning agents or soaps used. Warranty will not cover damage caused by the use of improper soaps or cleaning agents.
- **DO NOT** use products to clean the stone top that contain acetone, lemon, vinegar or other acids as these may cause damage to the stone surface.
- Periodically reseal the stone top using an appropriate stone sealer available from your local home store. Follow the manufacturer's directions on how to apply.

WARRANTY

The manufacturer warrants this item against defects in materials and workmanship for a period of one (1) year from the date of original retail purchase. This warranty applies only to the original purchaser. This warranty does not apply to any damage on the product by accident, misuse, or modified, improper installation or by affixing accessories not produced by the manufacturer. The manufacturer will not be held liable for damages caused from cleaners or soaps that etch or stain the stone top. The manufacturer is not accountable whatsoever for product installation during the warranty period. There is no further expressed warranty. The manufacturer shall not be legally responsible for incidental, consequential or special damages arising at or in connection with product use or performance except as may otherwise be accorded by law. The manufacturer disclaims any and all implied warranties.

REPLACEMENT PARTS LIST FOR 1789VA-30-201-UM (Undermount Sink)

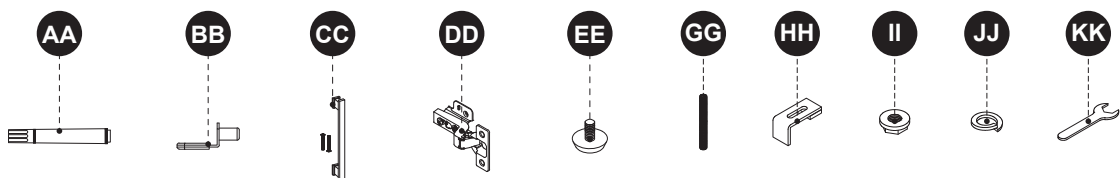
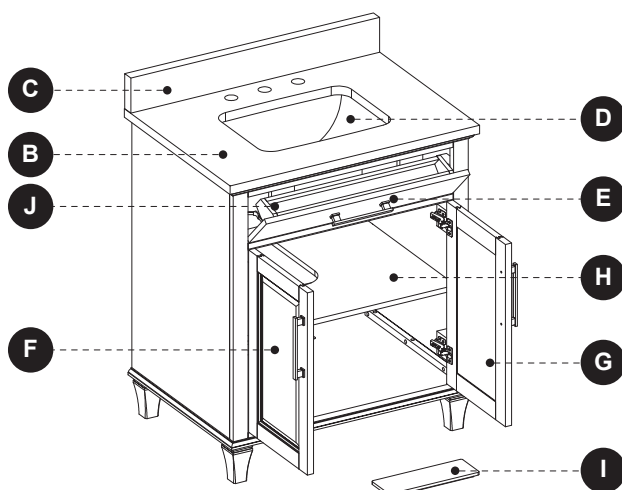
For replacement parts, call our customer service department at 866-439-9800, 8 a.m. - 8 p.m., EST, Monday - Sunday.



PART	DESCRIPTION	PART#
B	Complete Set 30" Carrara Marble Top	2500VT-30-900
	Complete Set 30" Engineered White Top	2500VT-30-901
	Complete Set 30" Engineered Carrara Top	2500VT-30-925
	Complete Set 30" Engineered Calacatta Top	2500VT-30-926
C	30" Carrara Marble Backsplash	PUBS-25-900-30
	30" Engineered White Backsplash	PUBS-25-901-30
	30" Engineered Carrara Backsplash	PUBS-25-925-30
	30" Engineered Calacatta Backsplash	PUBS-25-926-30
D	Sink	PU17-18X14-SQUARE
E	Tip-out Door	1789VA-30-201-TIP-OUT DOOR
F	Left Door	1789VA-30-201 DOOR SET
G	Right Door	
H	Shelf	1789VA-30-201-SHELF
I	Floor Plumbing Cutout Lid	201 FP LID
J	Tip-out Tray	1789VA-30-201-TRAY
AA	Touch-up pen	OF-0010
BB	Shelf Pin	B1044
CC	Pull (with screw)	1789VA-BN HANDLE
DD	Hinge	C-90-107
EE	Leveler	T-1007
GG	Bolt	GTC-SINK CLIPS
HH	Sink Bracket	
II	Nut	
JJ	Lock Washer	
KK	Wrench	

REPLACEMENT PARTS LIST FOR 1789VA-30-322-UM (Undermount Sink)

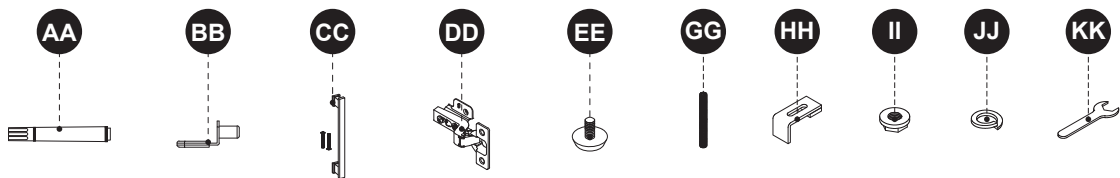
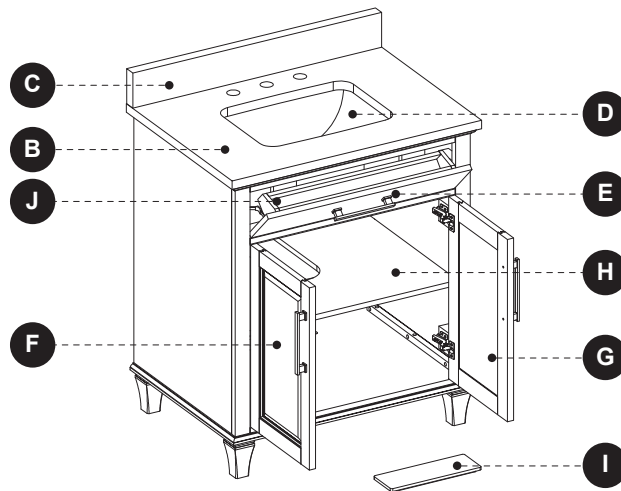
For replacement parts, call our customer service department at 866-439-9800, 8 a.m. - 8 p.m., EST, Monday - Sunday.



PART	DESCRIPTION	PART#
B	Complete Set 30" Carrara Marble Top	2500VT-30-900
	Complete Set 30" Engineered White Top	2500VT-30-901
	Complete Set 30" Engineered Carrara Top	2500VT-30-925
	Complete Set 30" Engineered Calacatta Top	2500VT-30-926
C	30" Carrara Marble Backsplash	PUBS-25-900-30
	30" Engineered White Backsplash	PUBS-25-901-30
	30" Engineered Carrara Backsplash	PUBS-25-925-30
	30" Engineered Calacatta Backsplash	PUBS-25-926-30
D	Sink	PU17-18X14-SQUARE
E	Tip-out Door	1789VA-30-322-TIP-OUT DOOR
F	Left Door	1789VA-30-322 DOOR SET
G	Right Door	
H	Shelf	1789VA-30-322-SHELF
I	Floor Plumbing Cutout Lid	322 FP LID
J	Tip-out Tray	1789VA-30-322-TRAY
AA	Touch-up pen	M-0066
BB	Shelf Pin	B1044
CC	Pull (with screw)	1789VA-BN HANDLE
DD	Hinge	C-90-107
EE	Leveler	T-1007
GG	Bolt	GTC-SINK CLIPS
HH	Sink Bracket	
II	Nut	
JJ	Lock Washer	
KK	Wrench	

REPLACEMENT PARTS LIST FOR 1789VA-30-323-UM (Undermount Sink)

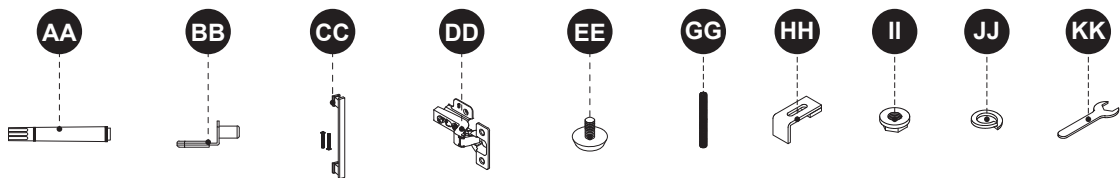
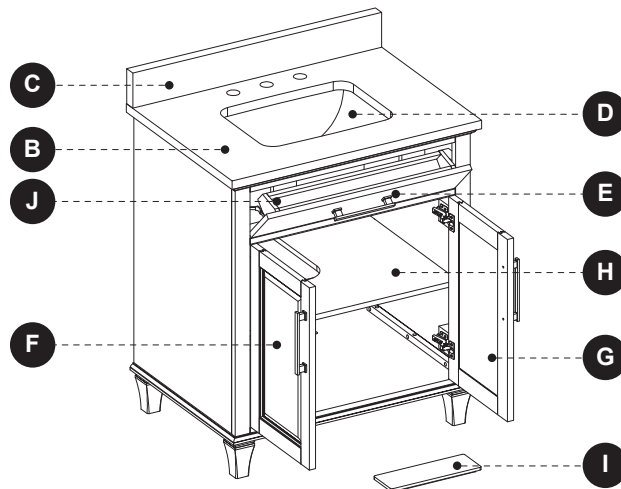
For replacement parts, call our customer service department at 866-439-9800, 8 a.m. - 8 p.m., EST, Monday - Sunday.



PART	DESCRIPTION	PART#
B	Complete Set 30" Carrara Marble Top	2500VT-30-900
	Complete Set 30" Engineered White Top	2500VT-30-901
	Complete Set 30" Engineered Carrara Top	2500VT-30-925
	Complete Set 30" Engineered Calacatta Top	2500VT-30-926
C	30" Carrara Marble Backsplash	PUBS-25-900-30
	30" Engineered White Backsplash	PUBS-25-901-30
	30" Engineered Carrara Backsplash	PUBS-25-925-30
	30" Engineered Calacatta Backsplash	PUBS-25-926-30
D	Sink	PU17-18X14-SQUARE
E	Tip-out Door	1789VA-30-323-TIP-OUT DOOR
F	Left Door	1789VA-30-323 DOOR SET
G	Right Door	
H	Shelf	1789VA-30-323-SHELF
I	Floor Plumbing Cutout Lid	323 FP LID
J	Tip-out Tray	1789VA-30-323-TRAY
AA	Touch-up pen	OX-0180Y
BB	Shelf Pin	B1044
CC	Pull (with screw)	1789VA-BN HANDLE
DD	Hinge	C-90-107
EE	Leveler	T-1007
GG	Bolt	GTC-SINK CLIPS
HH	Sink Bracket	
II	Nut	
JJ	Lock Washer	
KK	Wrench	

REPLACEMENT PARTS LIST FOR 1789VA-30-325-UM (Undermount Sink)

For replacement parts, call our customer service department at 866-439-9800, 8 a.m. - 8 p.m., EST, Monday - Sunday.



PART	DESCRIPTION	PART#
B	Complete Set 30" Carrara Marble Top	2500VT-30-900
	Complete Set 30" Engineered White Top	2500VT-30-901
	Complete Set 30" Engineered Carrara Top	2500VT-30-925
	Complete Set 30" Engineered Calacatta Top	2500VT-30-926
C	30" Carrara Marble Backsplash	PUBS-25-900-30
	30" Engineered White Backsplash	PUBS-25-901-30
	30" Engineered Carrara Backsplash	PUBS-25-925-30
	30" Engineered Calacatta Backsplash	PUBS-25-926-30
D	Sink	PU17-18X14-SQUARE
E	Tip-out Door	1789VA-30-325-TIP-OUT DOOR
F	Left Door	1789VA-30-325 DOOR SET
G	Right Door	
H	Shelf	1789VA-30-325-SHELF
I	Floor Plumbing Cutout Lid	325 FP LID
J	Tip-out Tray	1789VA-30-325-TRAY
AA	Touch-up pen	OF-0120R
BB	Shelf Pin	B1044
CC	Pull (with screw)	1789VA-BN HANDLE
DD	Hinge	C-90-107
EE	Leveler	T-1007
GG	Bolt	GTC-SINK CLIPS
HH	Sink Bracket	
II	Nut	
JJ	Lock Washer	
KK	Wrench	