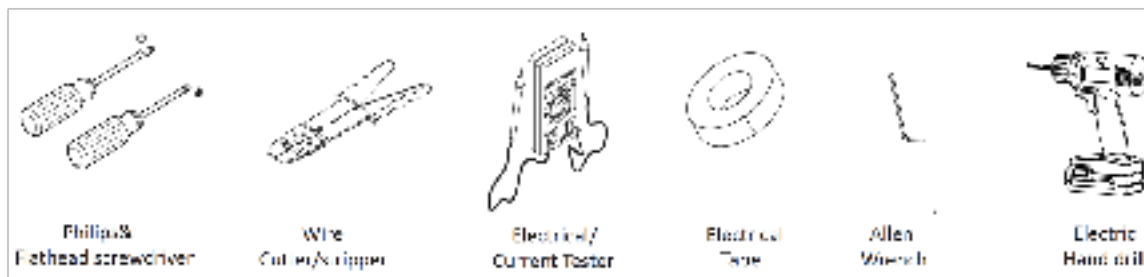


PREPARATION

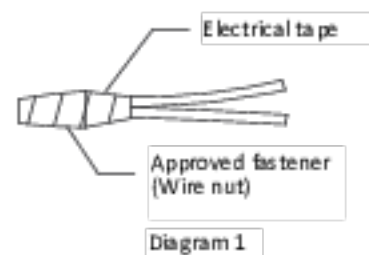
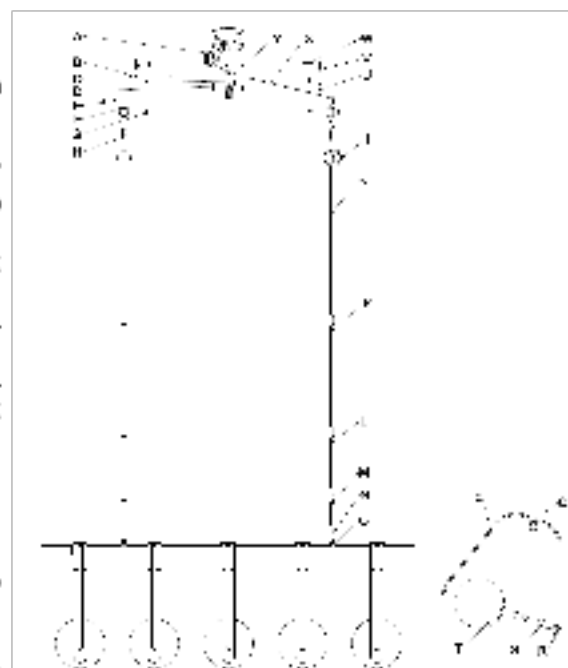
1. Record your model number for future reference.
2. **DANGER: Risk of electric shock.** To avoid electric shock, the power must be turned off at the circuit breaker or fuse box before beginning the installation procedure.
3. **DANGER: Risk of electric shock.** To avoid electric shock, the outlet box must be properly grounded.
4. **Important Information.** Inspect the product for any damage. This product is for indoor use only. Observe all local codes.
Please see next page for a larger installation image

TOOLS AND MATERIALS NEEDED



FIXTURE INSTALLATION

1. Remove the fixture and parts bag(s) from the carton. Put them onto a clean and soft cloth to protect finish. Confirm all parts are included.
2. Loosen ball nuts (G), remove mounting plate (B) from canopy (E). Then attach mounting plate (B) onto outlet box with screws (D) and mark all anchor hole positions on the ceiling.
3. Loosen screws (D), take off mounting plate (B). Then drill anchor holes in 1/4" dia. for concrete ceiling or 3/8" dia. for dry ceiling. Insert anchors (V) or (W) into ceiling (V for concrete, W for dry ceiling).
4. Determine what height you want the fixture to rest at by mixing and matching the down rods (J, K, L, and M).
5. Thread wire and ground wire (N) through desired down rods (J, K, L, and M). Then tighten the desired rods together and attach to fixture (O).
6. Install loop (I) onto down rod (J), attach chain ends (H) onto loop (I) and (F). Thread wire and ground wire (N) through loop (F), canopy (E) and mounting plate (B).
7. Trim excess cord to minimum 13" beyond canopy (F). Strip wire to 5/8" at the end, and twist.
8. Attach mounting plate (B) onto outlet box with screws (D) and tapping screws (U). Ensure ground screw (C) is attached to mounting plate (B).
9. Lift fixture, lace safety cord (X) around mounting plate (B), then secure screw (Y) with Allen wrench.
10. **NOTICE:** To avoid short circuit, make sure wires are not exposed. Fasten fixture green or bare ground wire to the green or bare copper wire in outlet box with wire nut (A) or fasten onto ground screw (C) on mounting plate.
11. **NOTICE:** To avoid short circuit, make sure wires are not exposed. Fasten fixture white wire to the white wire in outlet box with wire nut (A). Wrap the wire connector with electrical tape so that the tape seals the end of wire nut (A). See diagram 1.
12. **NOTICE:** To avoid short circuit, make sure wires are not exposed. Fasten the fixture black wire to the black wire in outlet box with wire nut (A). Wrap the wire connector with electrical tape so that the tape seals the end of wire nut (A). See diagram 1.
13. Tuck wires carefully inside outlet box. Lift fixture then attach the canopy (F) onto mount plate (B) with ball nuts (G).
14. **NOTICE:** Do not exceed recommended wattage. Rated **Max 60W, Type G9**, recommend using **15W listed LED bulb**. (Bulb(s) not included).
15. Install bulb to the socket (S).
16. Loosen screws (Q) and raise the arm (P), then install glass shade (T) onto arm (R). Gently lower arm (P) back onto glass shade (T) and then tighten screws (Q).
17. Repeat steps 14-16 for all shades.
18. Restore power to circuit at breaker or fuse box.



CLEANING: Please clean fixture with a soft and dry cloth ONLY. Clean glass with a mild soap