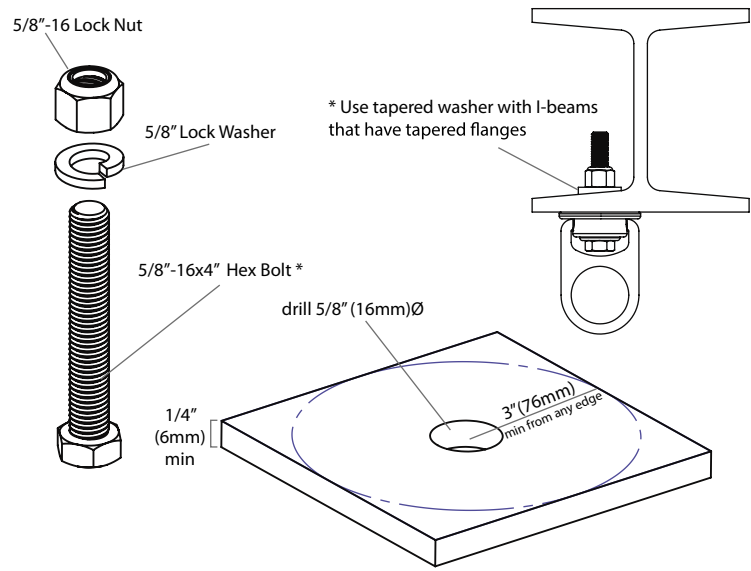


Tensile Strength (UTS): 10,000-lbf (44kN)
Working load: 2,000-lbf (8.8kN)
Can be used with Horizontal Life Line Systems
Weight: 1.2-lbs (544.31g) **Materials: zinc plated steel**
Regulatory Compliance: Meets or exceeds
ANSI Z359.1-2007 and OSHA 1926.502
CE 0321 / EN 795:1996 (+A1:2000) Class B

| | KIT CONTENTS | PART NUMBER |
|-----------------|--------------|----------------|
| METAL | | A320003 |
| CONCRETE | | A510001 |

STEEL MOUNTING

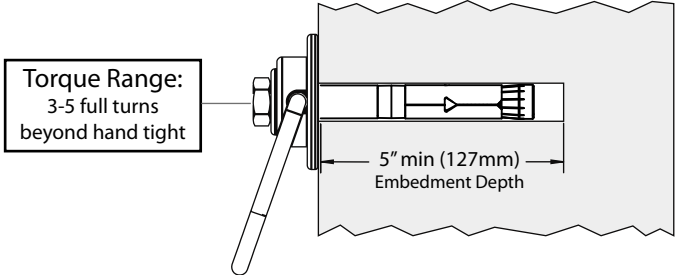
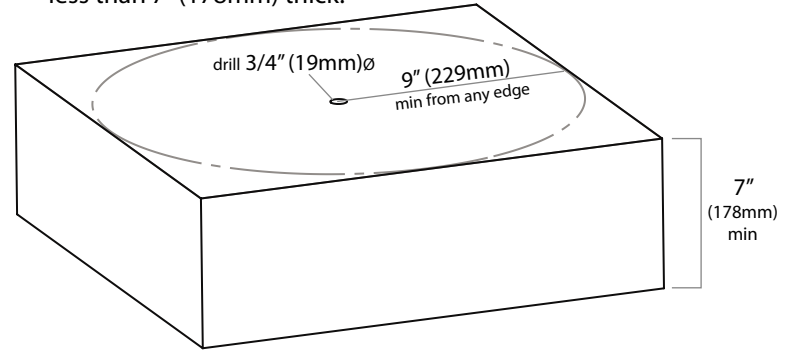


Torque Range:
75-90 ft-lbs
(100-120Nm)

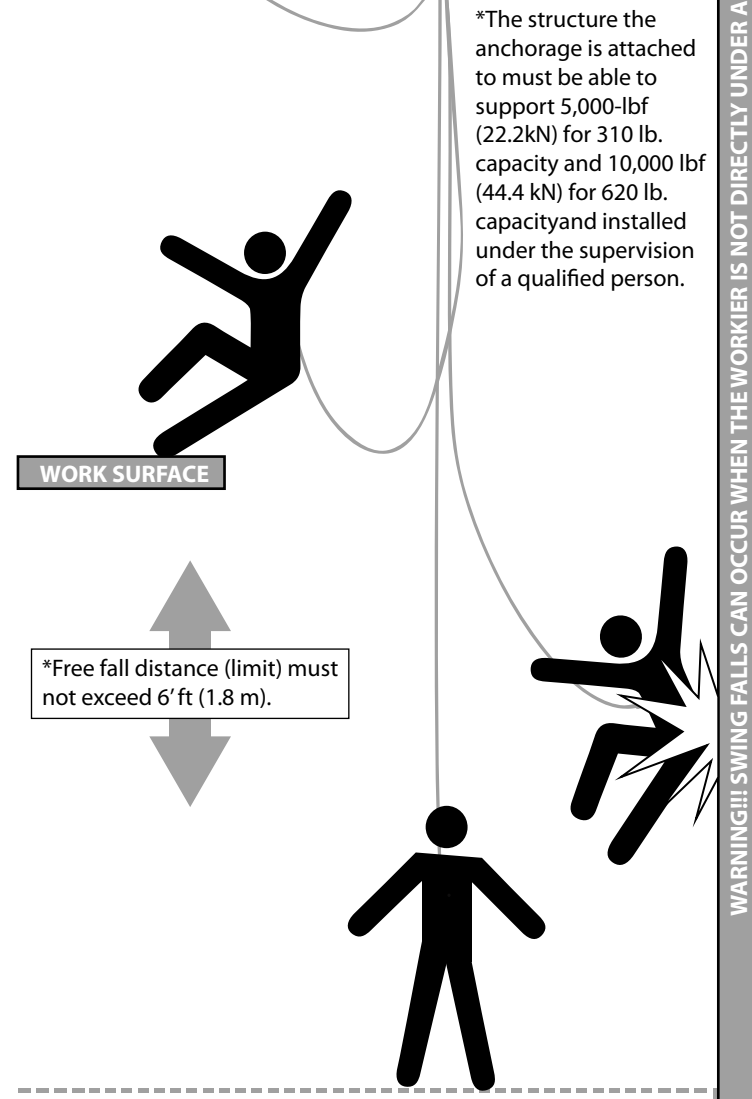
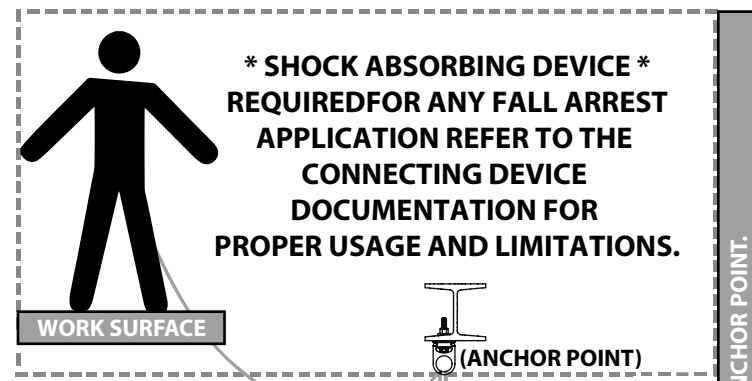
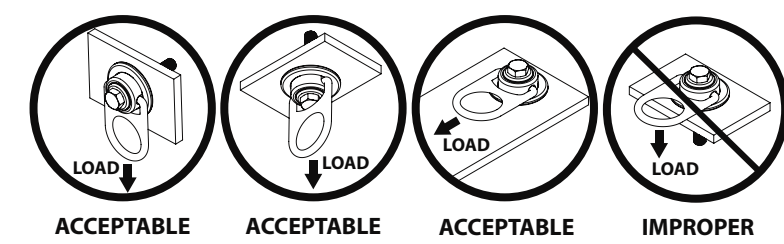
* For steel applications a grade-5, 8 (or equivalent) bolt no shorter than 4" (100mm) with a locking nut and washer must be used. Swivel anchor must be flush with steel surface. A 16mm bolt may be used in place of a 5/8"-16 for metric applications.

CONCRETE MOUNTING

- Use a proper drill & bit for concrete. (SDS drill bit)
- Drill a 3/4" (19mm) hole no less than 5" (127mm) deep 9" (229mm) away from any edge.
- Hole must be straight & perpendicular to surface.
- Hole must be free of debris
- Concrete strength must be at least 3000psi (20.7MPa) and no less than 7" (178mm) thick.



LOADING CONDITIONS DIAGRAM



MINIMUM CLEARANCE 3ft (1m)
 DECK/FLOOR/GROUND LEVEL

*All products subjected to fall arresting forces should be removed from service immediately!

WARNING!!! SWING FALLS CAN OCCUR WHEN THE WORKER IS NOT DIRECTLY UNDER ANCHOR POINT.