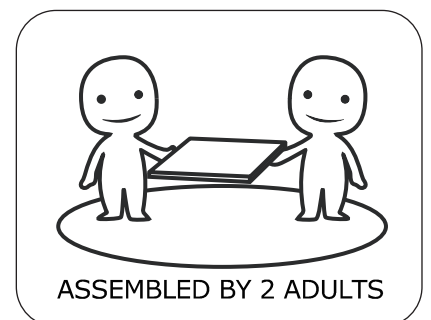
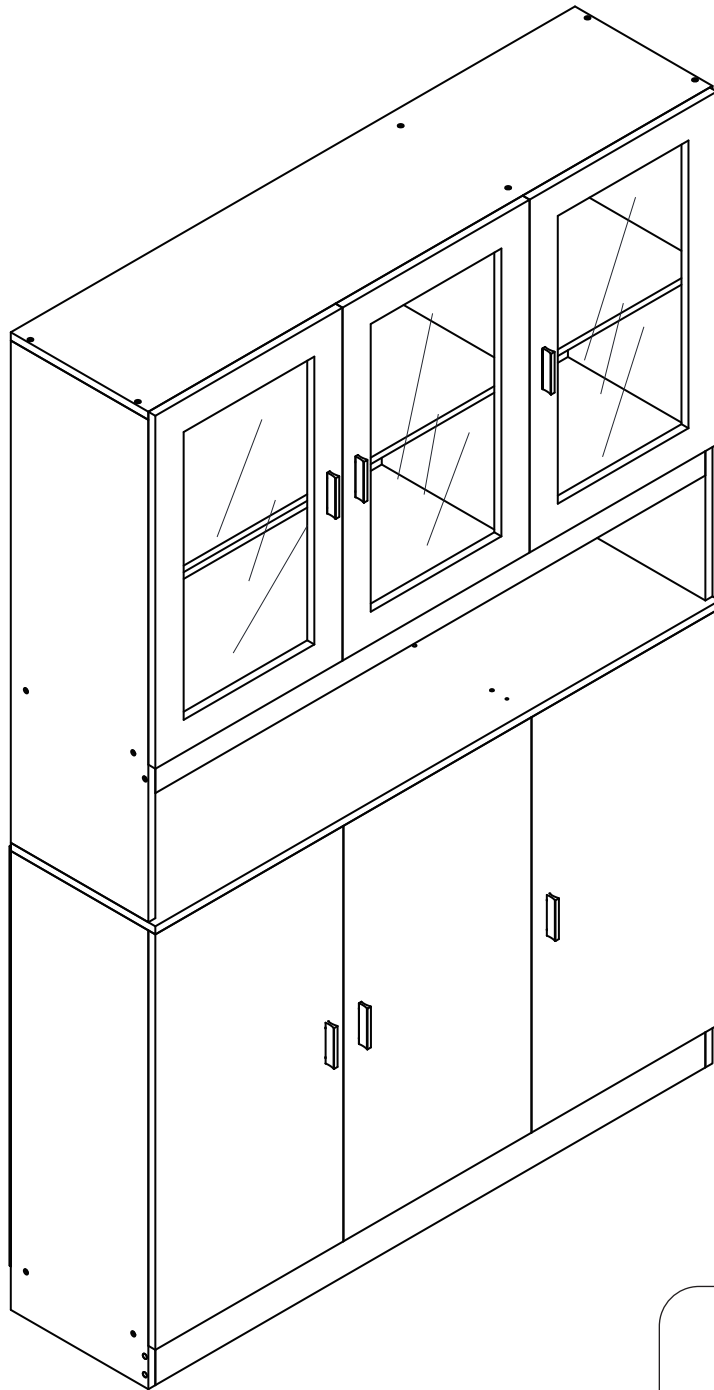


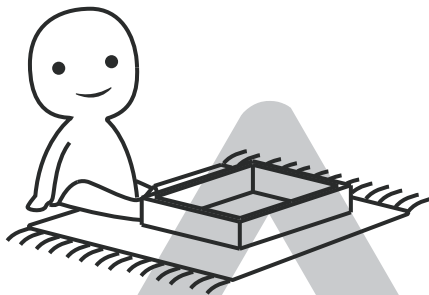
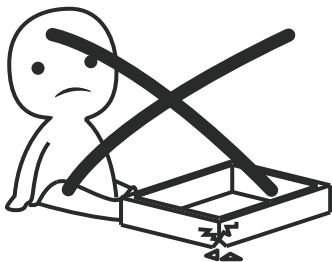
clothes closet





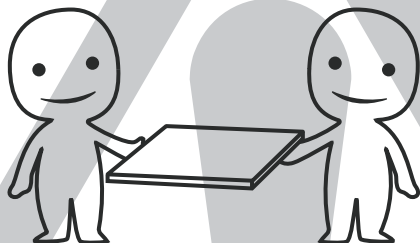
IMPORTANT INFORMATION!

please read the entire manual before starting to assemble and/or using this product. follow the manual thoroughly and keep it for further reference.



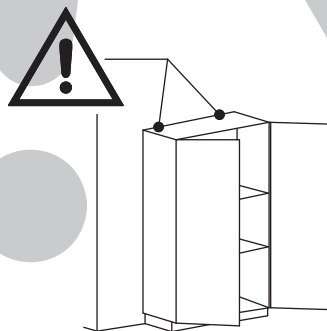
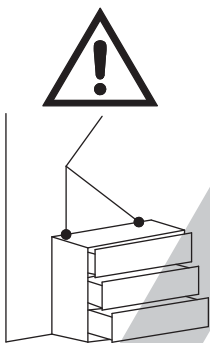
AVOID SCRATCHES!

In order to avoid scratching this furniture should be assembled on a soft layer-could be a rug.



IMPROVE EFFICIENCY !

Try to find a partner to install with you, which can speed up the installation efficiency and shorten the time.



ANTI-TOPPLE WARNING !

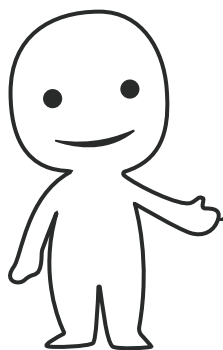
Overturned furniture can cause serious or fatal crush injuries. To prevent tipping over, be sure to use the wall attachment, if not included with this product. Please purchase the wall attachment that fit your wall. If unsure, seek professional advice. Please read and follow each step of the instructions carefully.

IMPORTANT !

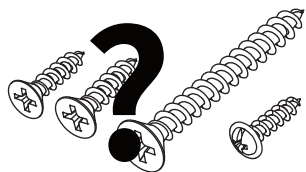
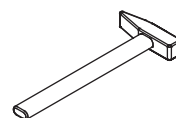
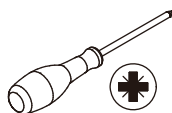
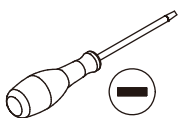
It is important that any product which is assembled using any kind of screw is re-tightened 2 weeks after assembly, and once every 3 months - in order to assure stability through-out the lifespan of the product.

For regular maintenance and cleaning of the product, for the frame, please use a rag dipped in neutral detergent to fully wipe it, and then dry it with a clean rag. For glass materials, wipe with a rag dampened with water glass cleaner, and then dry with a dry rag.

Do not use an electric screwdriver, and do not use too much force when installing, because the board is easy to break.

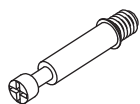


Please prepare the following tools



When installing, please carefully confirm whether each screw corresponds to the manual, accessories with similar shapes can be distinguished by size

Ax12(+1)



Ø6x35mm

Ax12(+1)



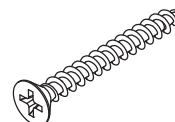
Ø15x10mm

Cx32(+3)



Ø6x30mm

Dx28(+2)



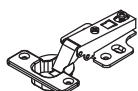
Ø4x40mm

Ex72(+3)



Ø4x14mm

Fx8



Gx6

G-1



G-2



Hx16



Ix24(+2)



Ø3x12mm

Jx2

J-1



J-2



J-3



Kx2

K-1



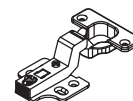
K-2



K-3



Lx4



Mx36(+3)

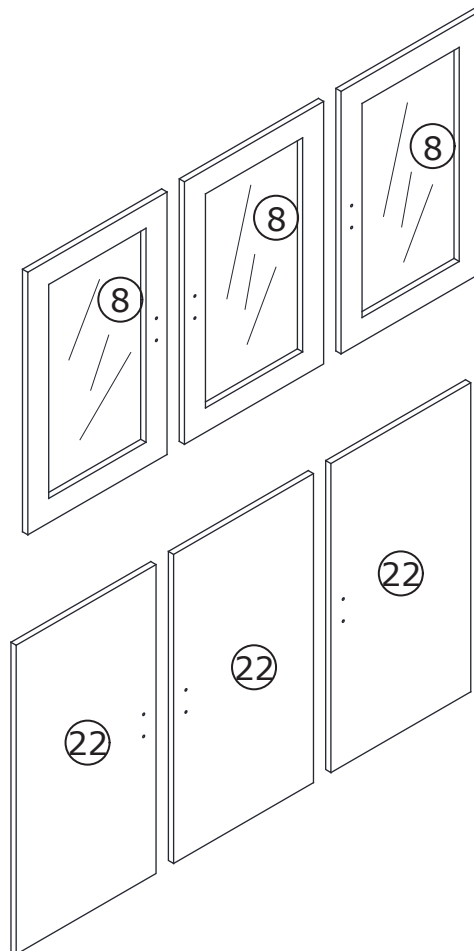
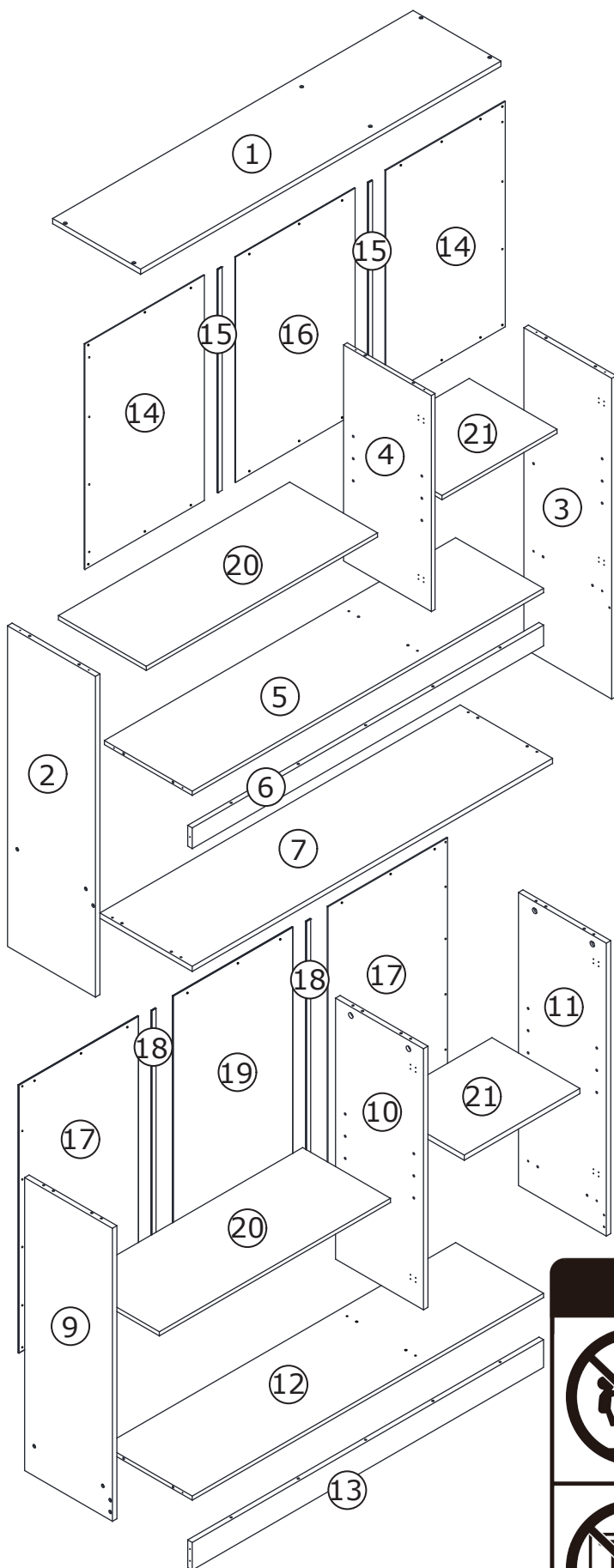


Nx20(+2)



Ox6





⚠ WARNING

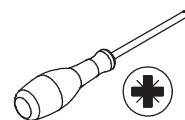
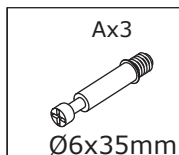
Children have died from furniture tipover. To reduce the risk of furniture tipover:

- ALWAYS install tipover restraint provided.
- NEVER put a TV on this product.
- NEVER allow children to stand, climb or hang on drawers, doors, or shelves.
- NEVER open more than one drawer at a time.
- Place heaviest items in the lowest drawers.

*This is a permanent label.
Do not remove!*

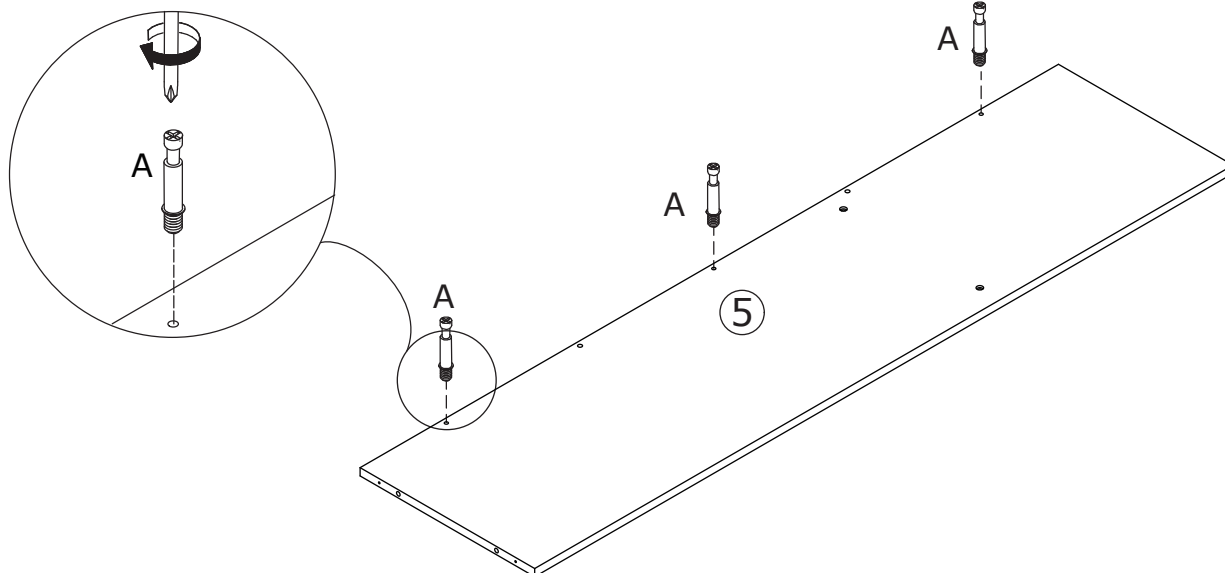
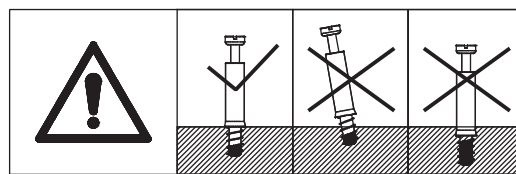


1

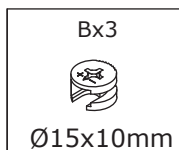


Do not use an electric screwdriver, do not use force during the rotation of the accessories, otherwise it may cause the board to crack

Fix (A) on plate 5



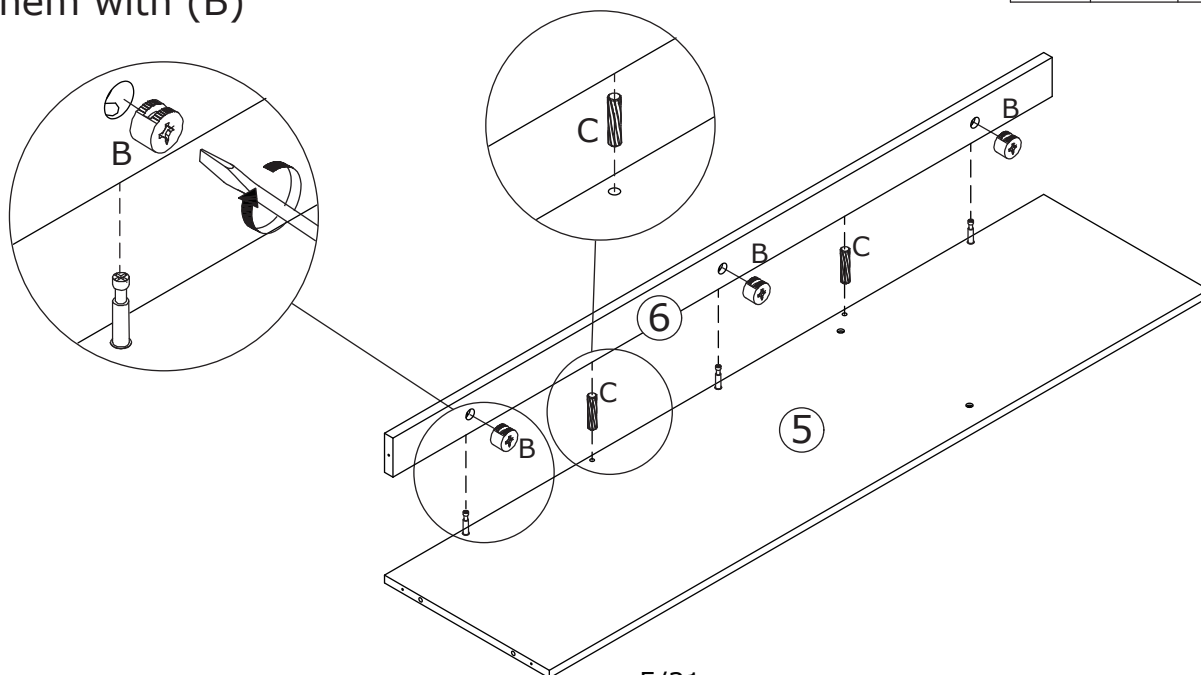
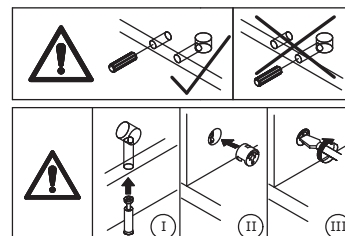
2



Please pay attention to the holes where the accessories are inserted

as shown, turn cam locks clockwise to tighten.

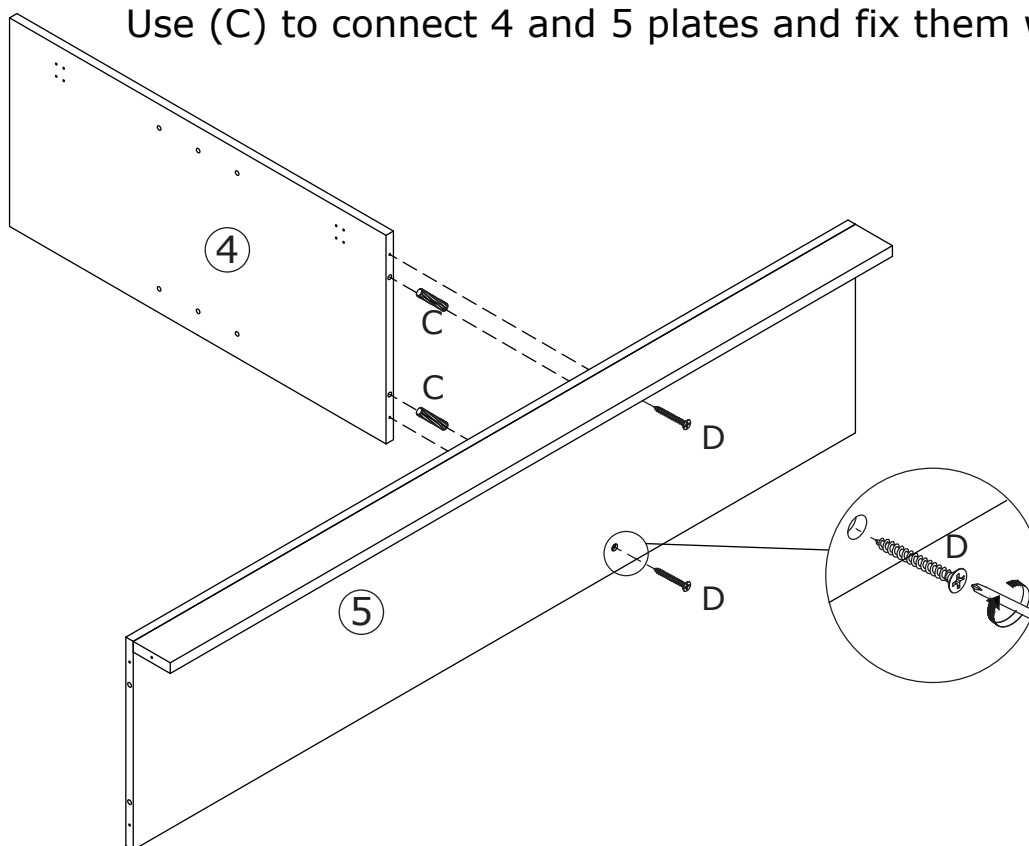
Use (C) to connect the 5 and 6 plates, and then fix them with (B)



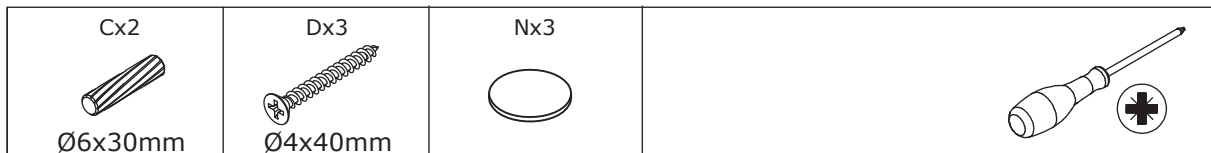
3



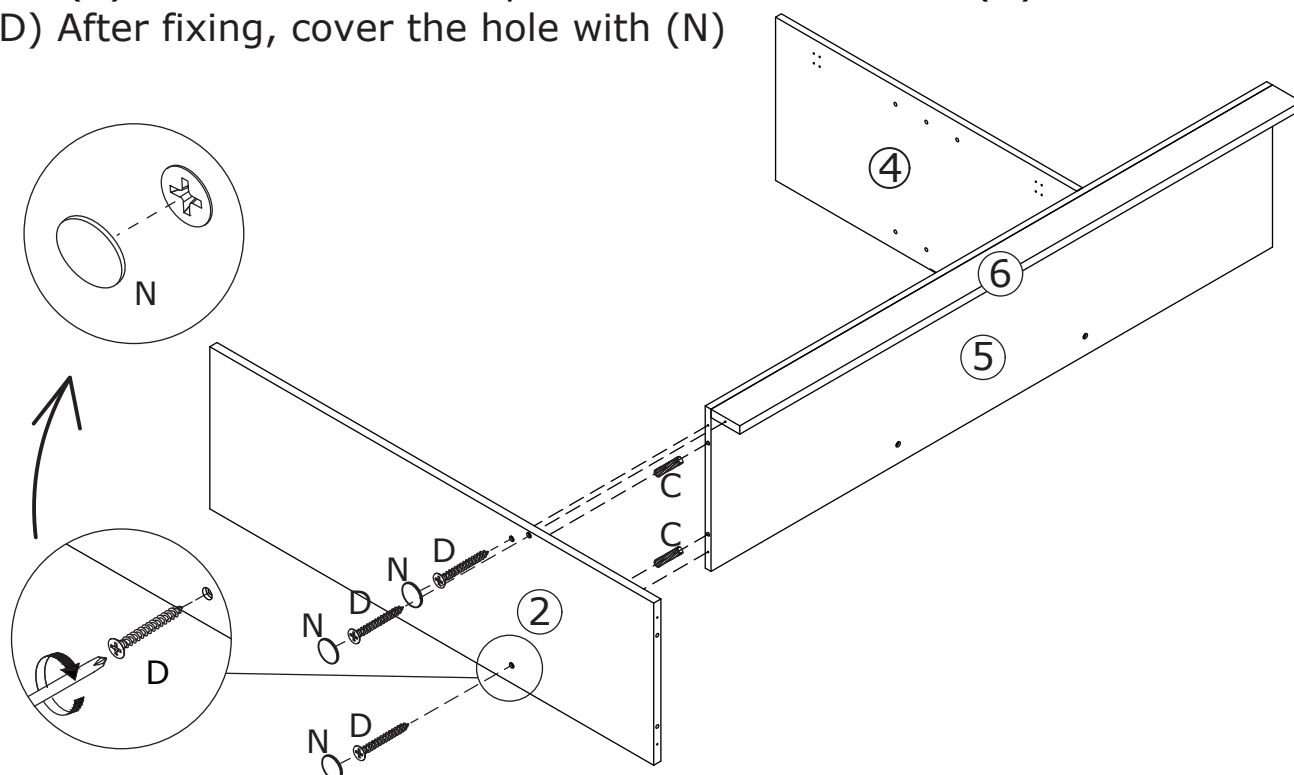
Use (C) to connect 4 and 5 plates and fix them with (D)



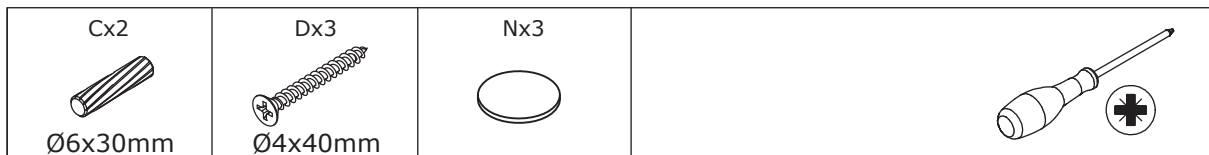
4



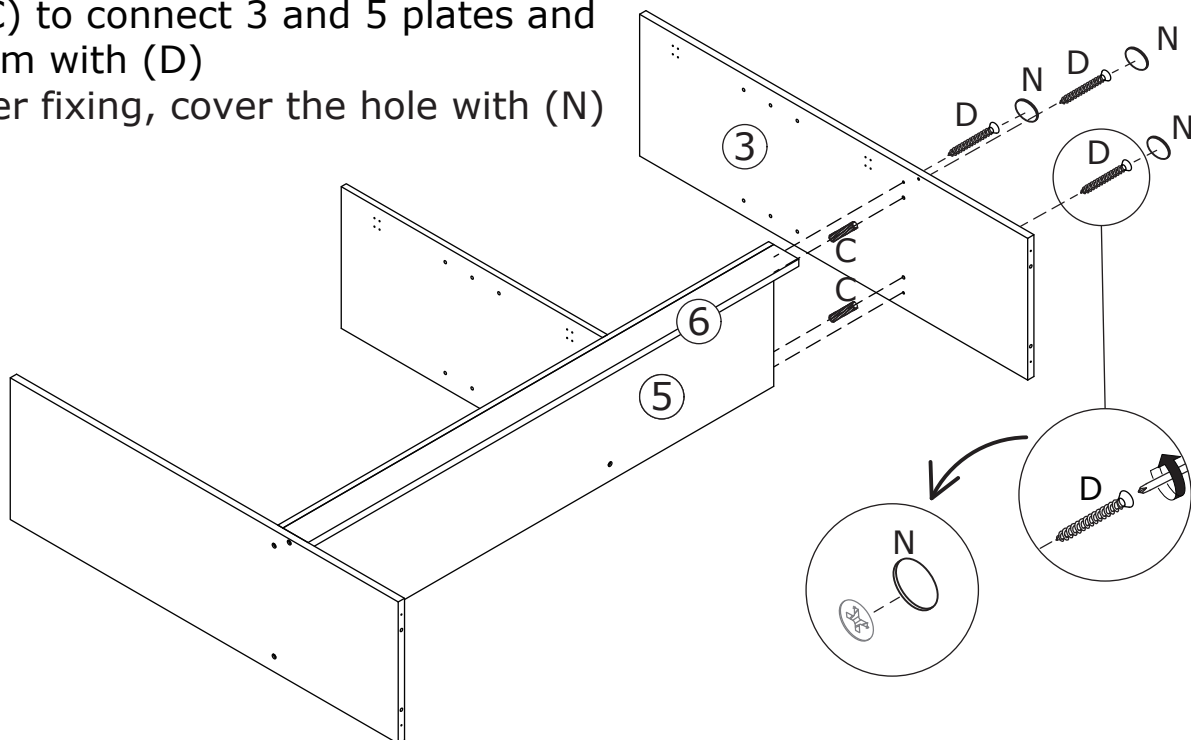
Use (C) to connect 2 and 5 plates and fix them with (D)
(D) After fixing, cover the hole with (N)



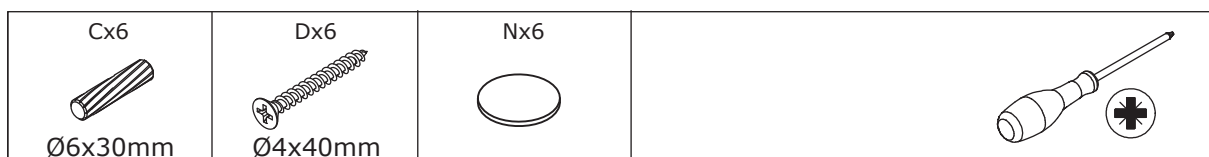
5



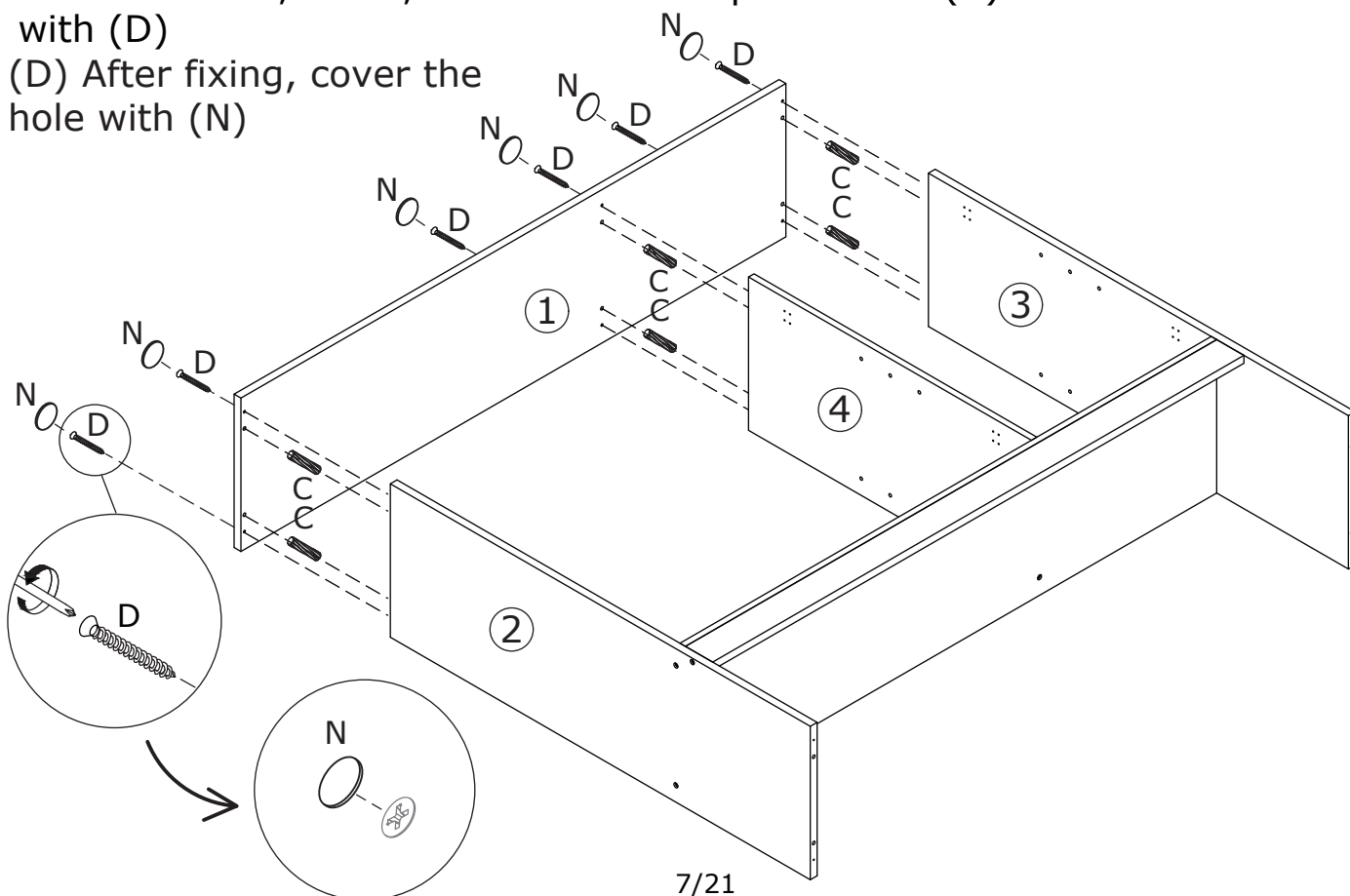
Use (C) to connect 3 and 5 plates and
fix them with (D)
(D) After fixing, cover the hole with (N)



6



Connect No. 1, No. 2, No. 3 and No. 4 plates with (C) and fix them
with (D)
(D) After fixing, cover the
hole with (N)

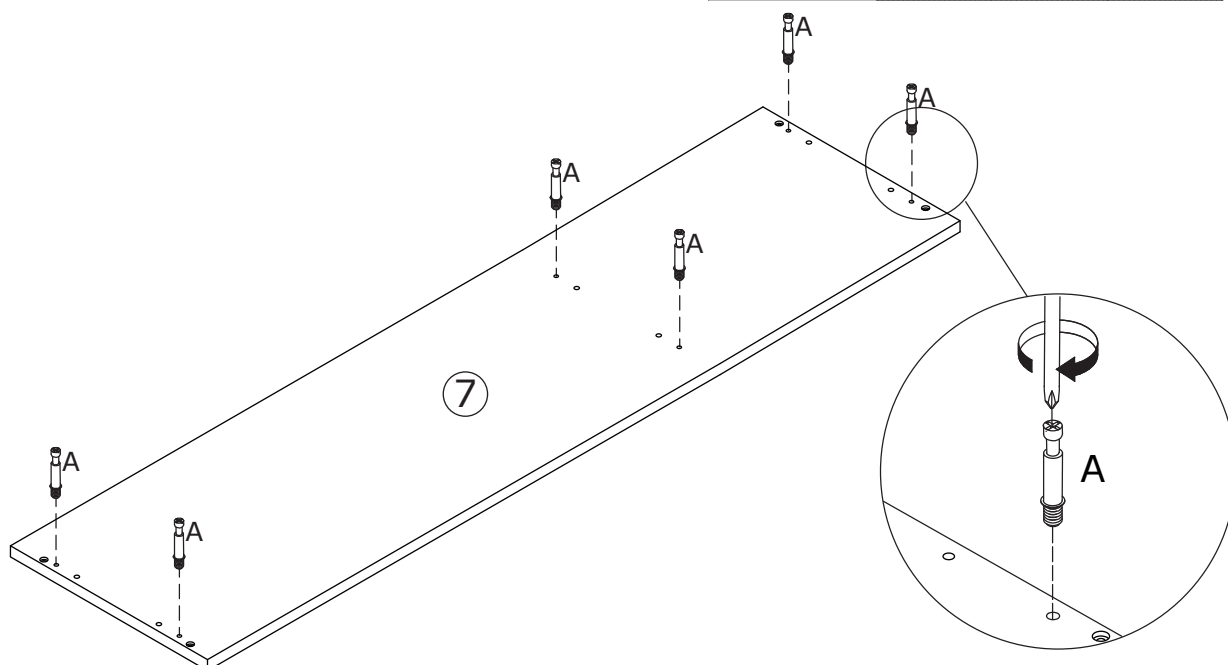
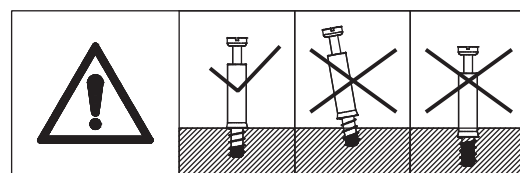


7



Do not use an electric screwdriver, do not use force during the rotation of the accessories, otherwise it may cause the board to crack

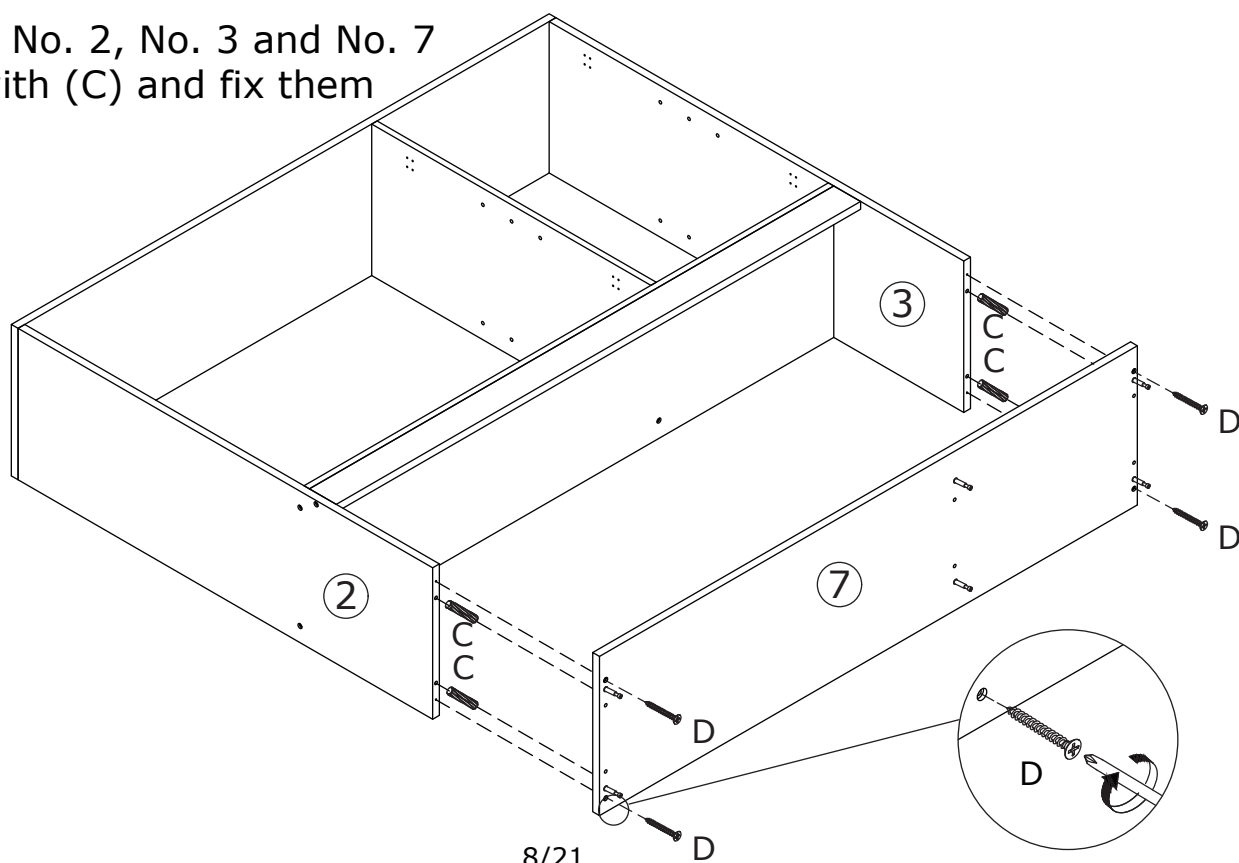
Fix (A) on plate 7



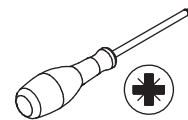
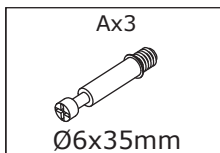
8



Connect No. 2, No. 3 and No. 7 plates with (C) and fix them with (D)

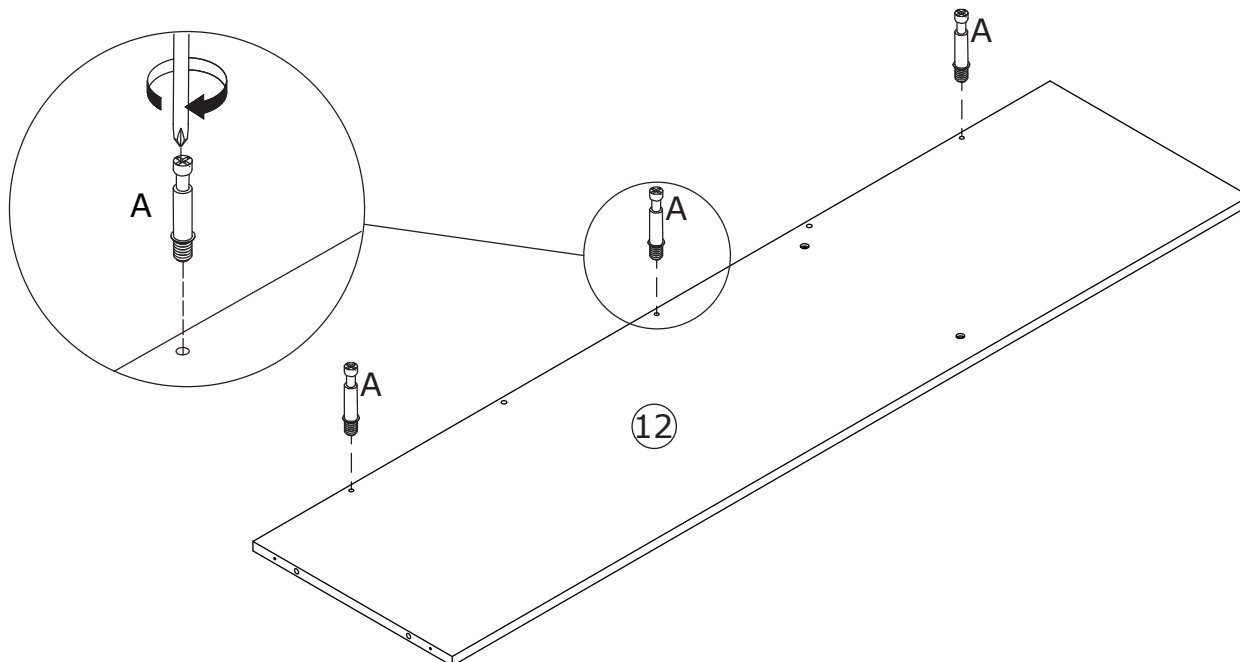
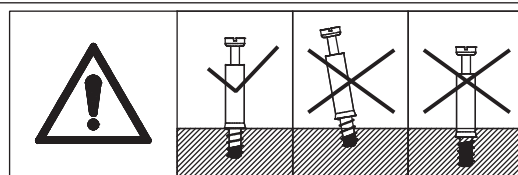


9

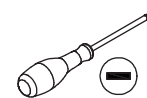
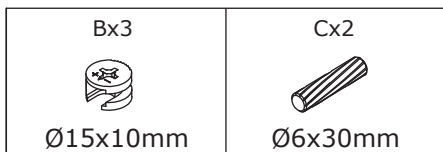


force during the rotation of the accessories,
otherwise it may cause the board to crack

Fix (A) on plate 12



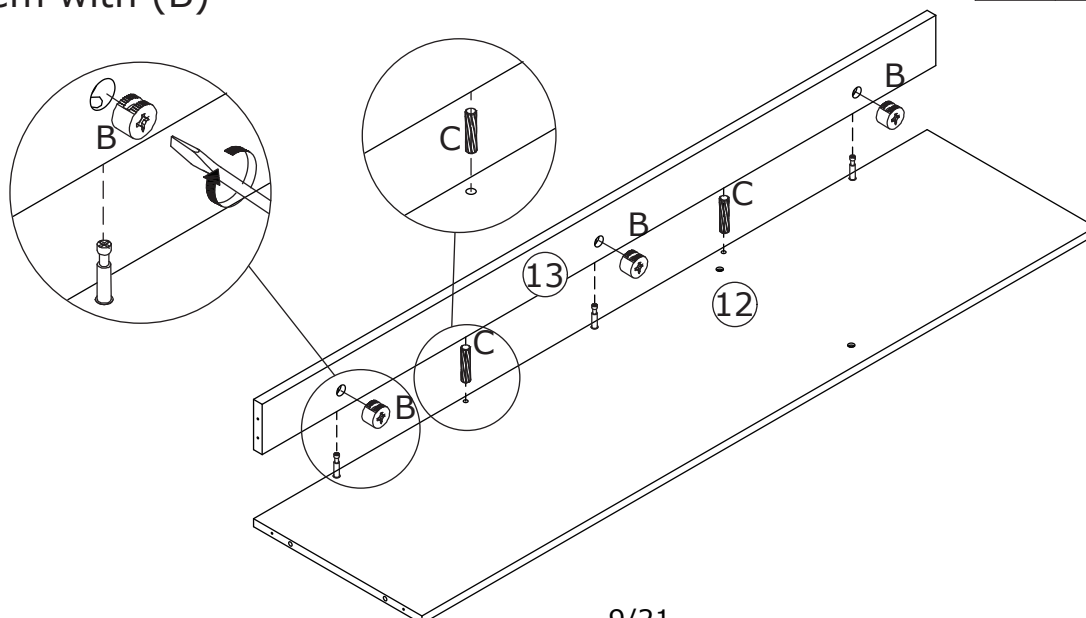
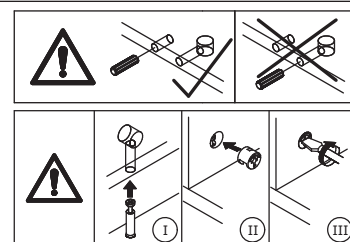
10



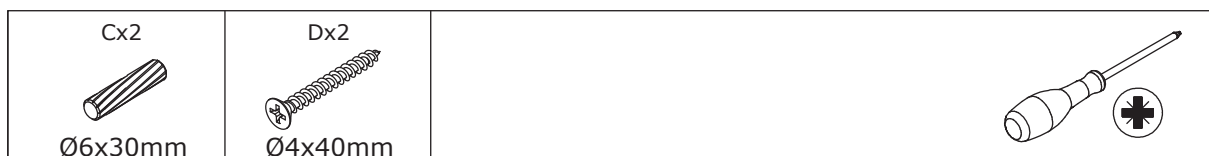
Please pay attention to the holes where
the accessories are inserted

as shown, turn cam locks
clockwise to tighten.

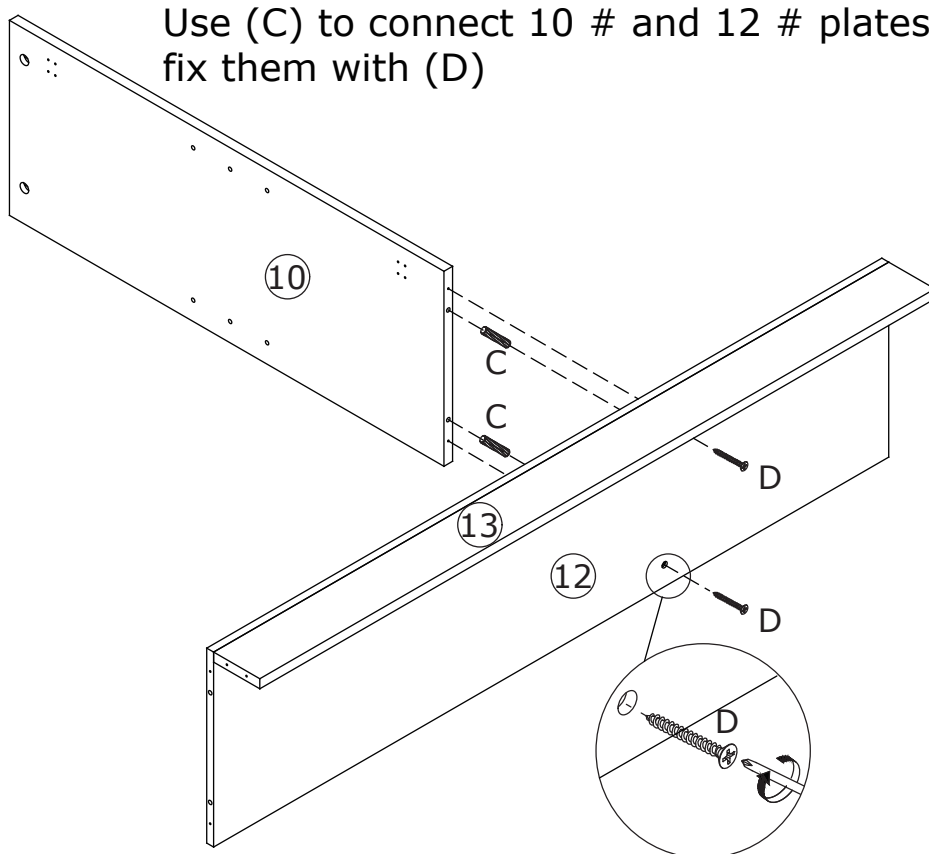
Use (C) to connect the 12 and 13 plates, and then fix
them with (B)



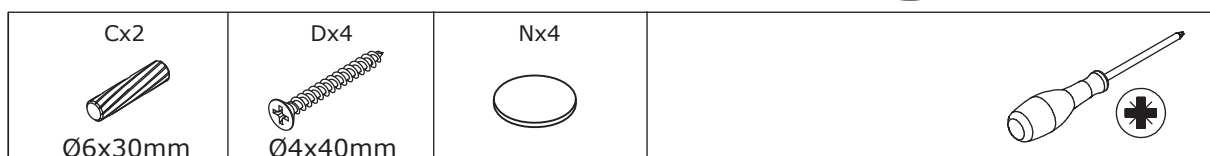
11



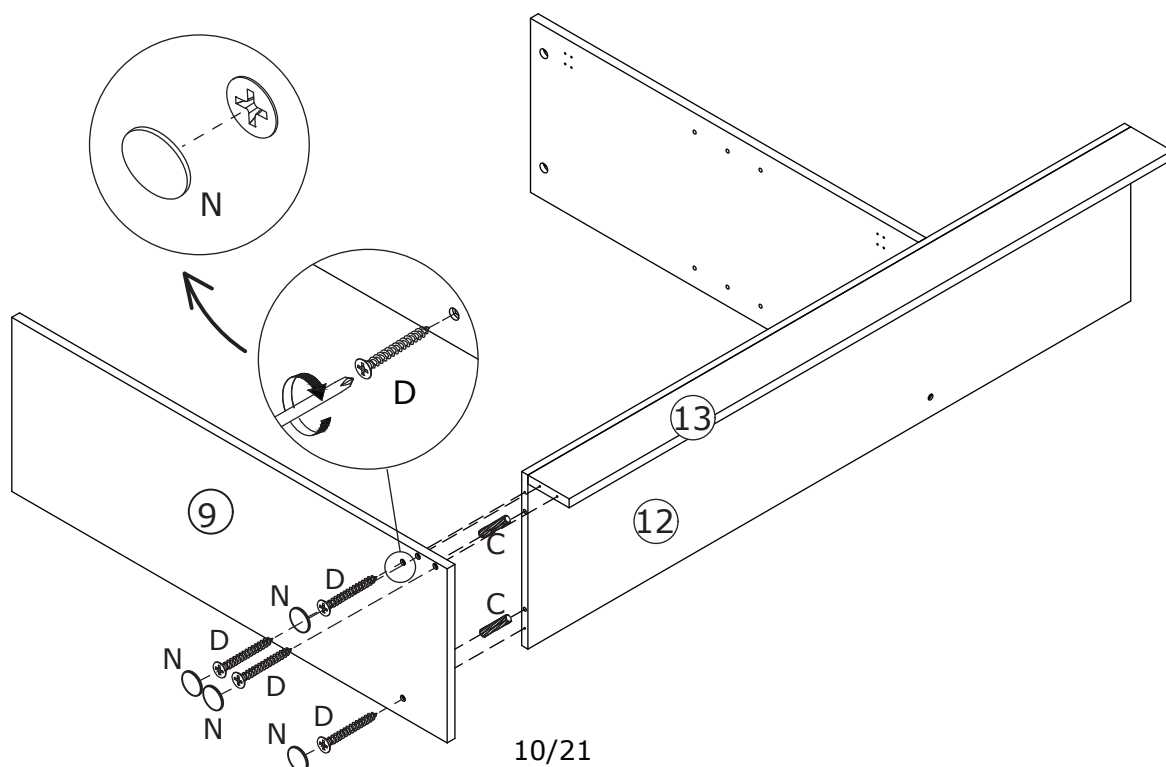
Use (C) to connect 10 # and 12 # plates and fix them with (D)



12



Connect plates 9, 12, and 13 using (C) and secure them using (D)
(D) After fixing, cover the hole with (N)



13

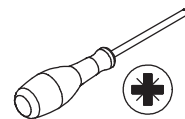
Cx2



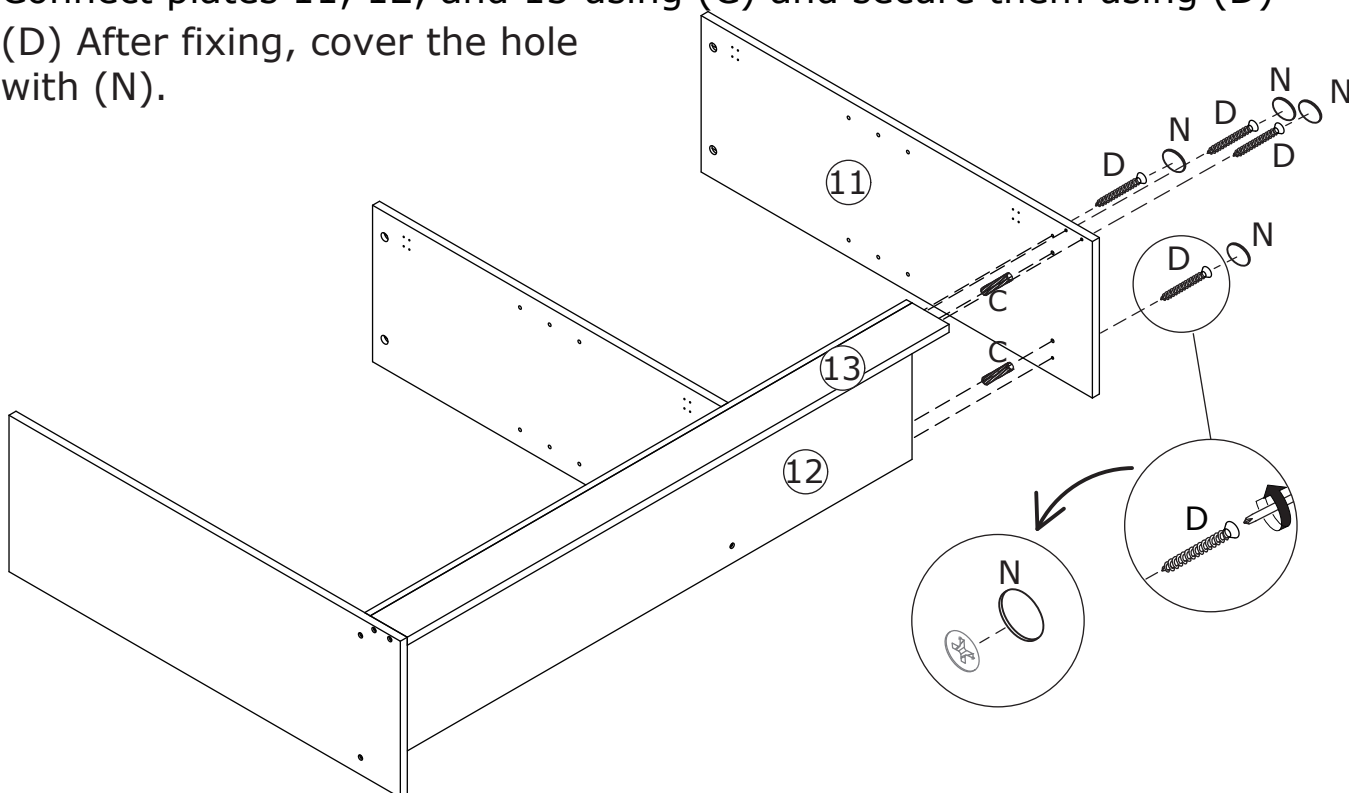
Dx4



Mx4

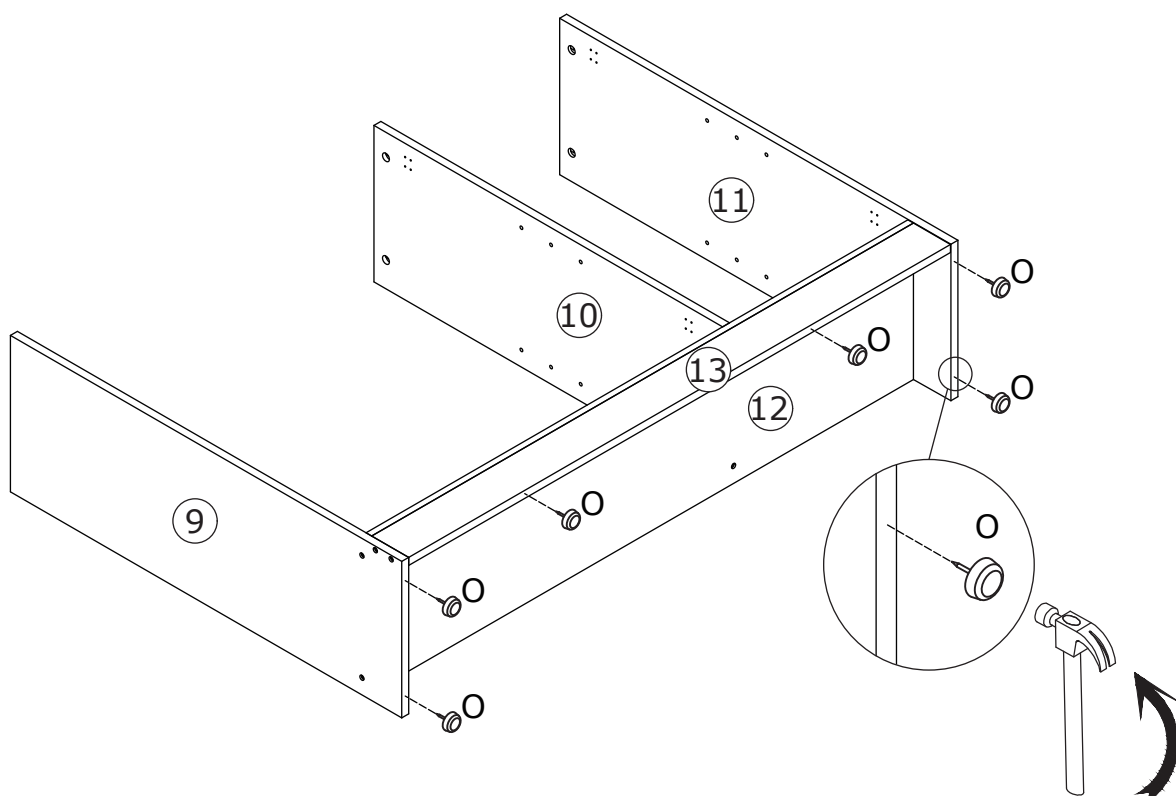
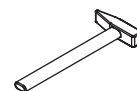


Connect plates 11, 12, and 13 using (C) and secure them using (D)
(D) After fixing, cover the hole with (N).



14

Ox6



15

Bx6

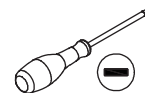


Ø15x10mm

Cx6



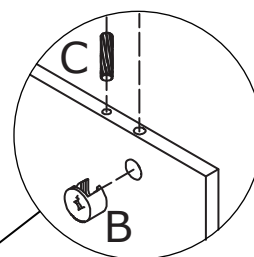
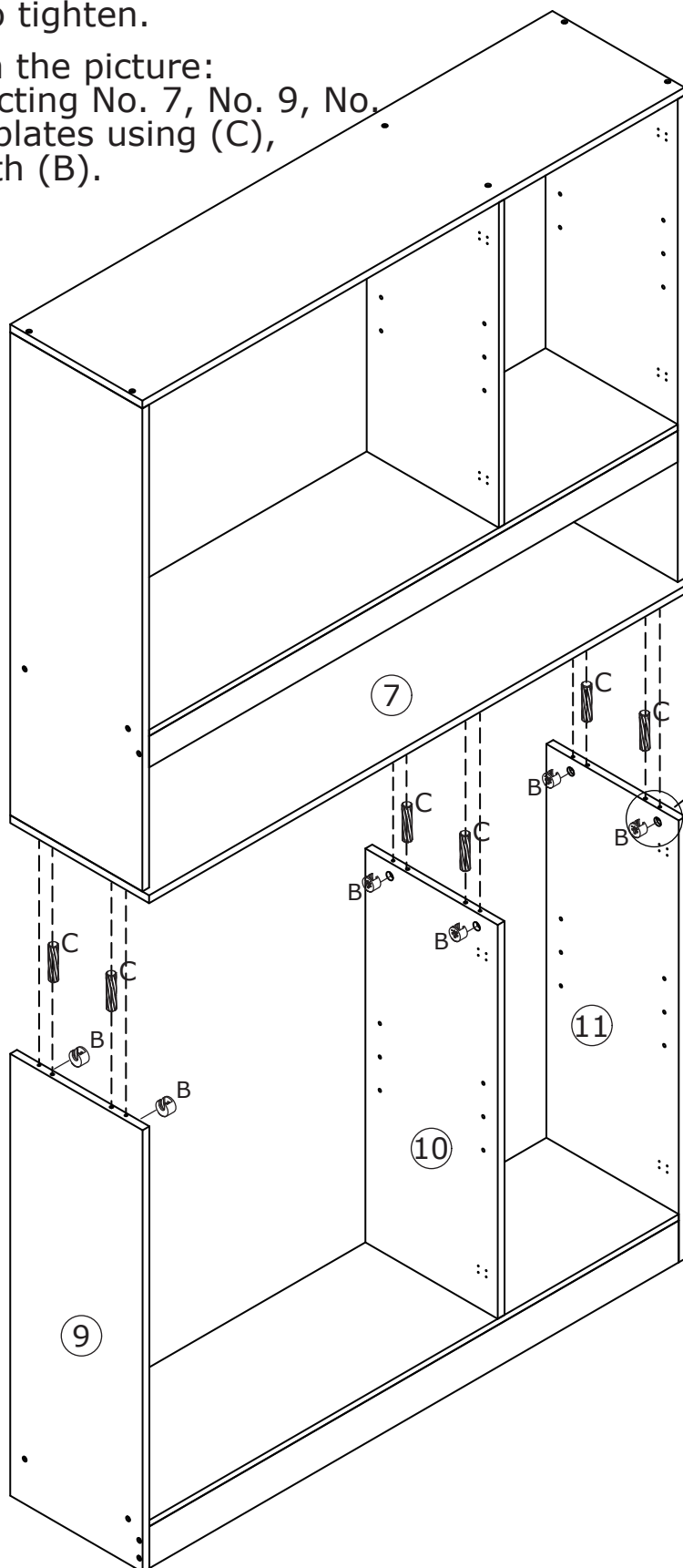
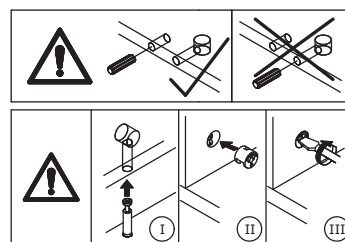
Ø6x30mm



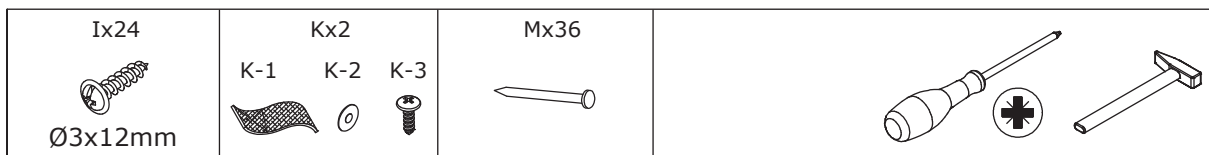
Please pay attention to the holes where the accessories are inserted

as shown, turn cam locks clockwise to tighten.

As shown in the picture:
After connecting No. 7, No. 9, No. 10, No. 11 plates using (C),
fix them with (B).

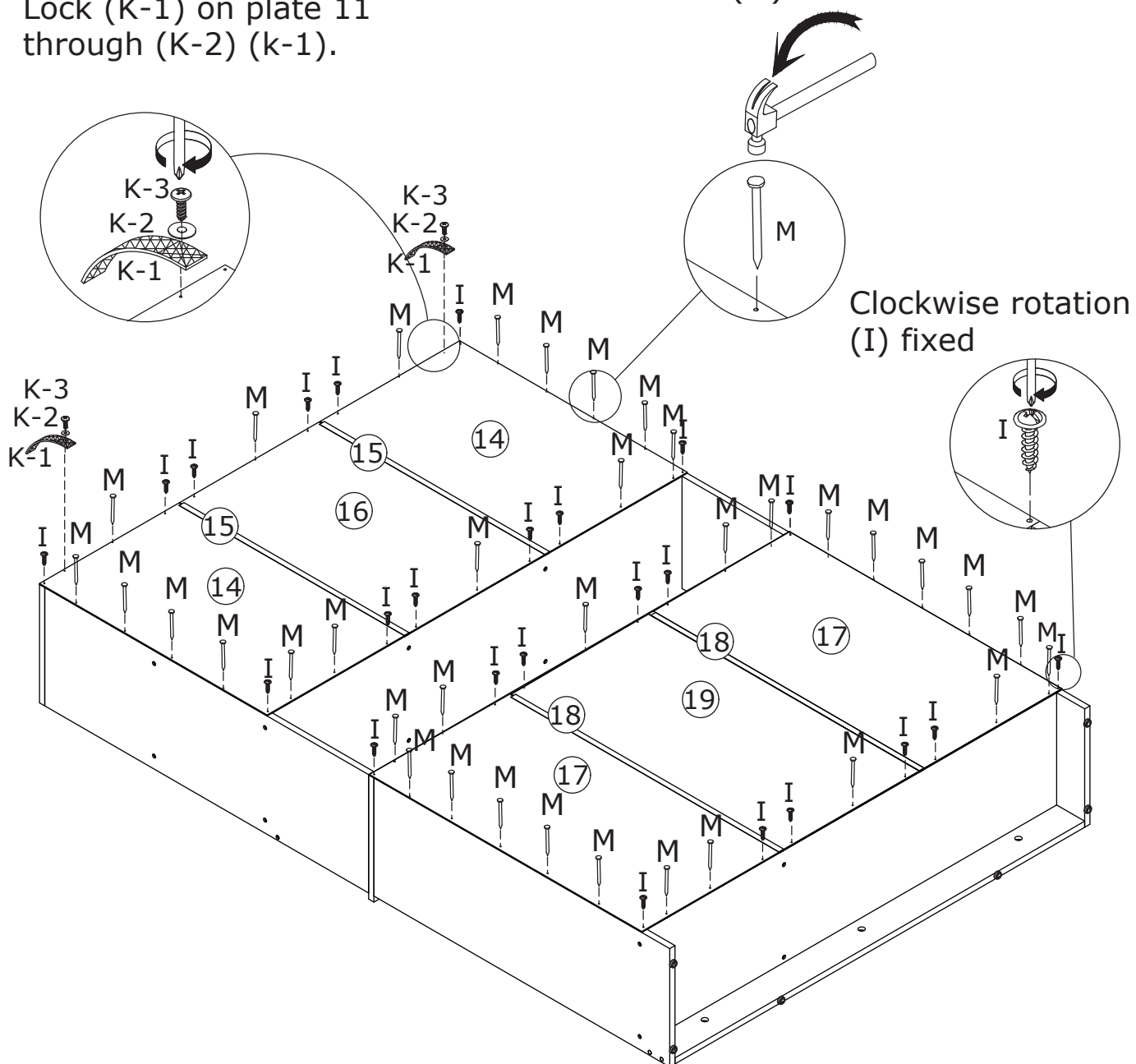


16



Lock (K-1) on plate 11 through (K-2) (k-1).

Please lay the back panel flat and fix the screw (I) on the diagonal, and then fix (M) with a hammer.

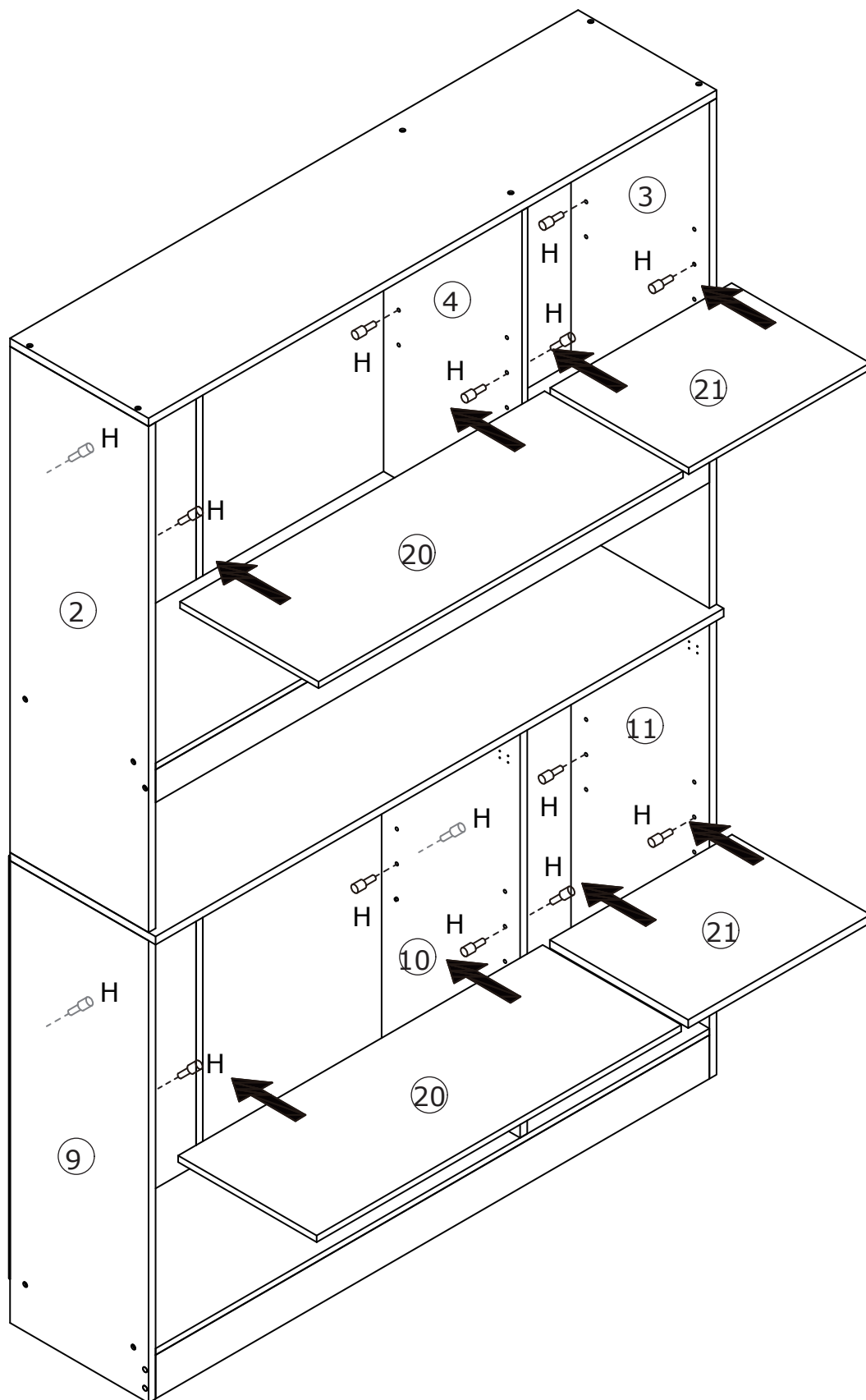


17

Hx16

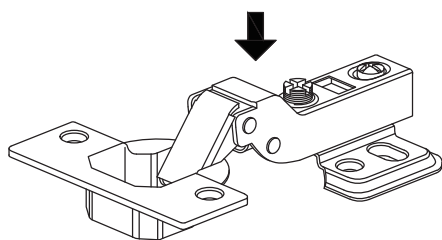


(H) After inserting the plate, place the plate No. 20 and No. 21

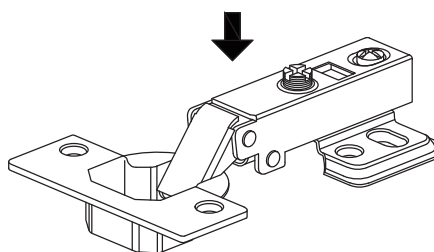




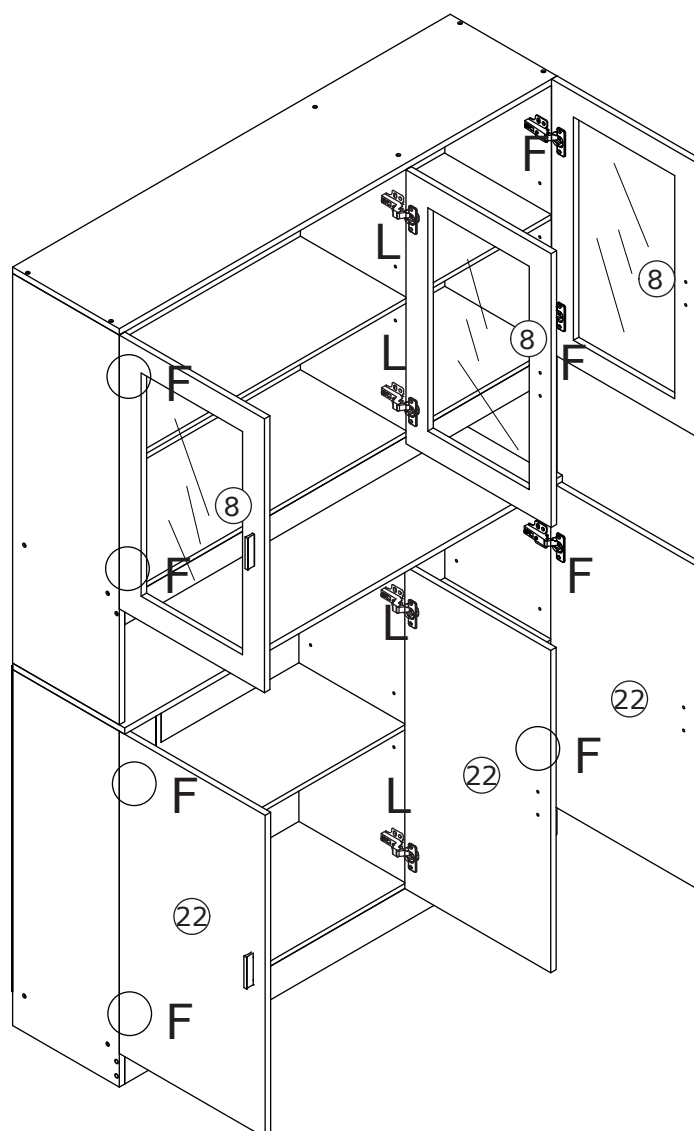
Pay attention to the difference between the middle parts of the two types of door hinges
The large curved door hinges are used on the outermost door plates, and the small curved door hinges are used on the door panel in the middle of the cabinet.



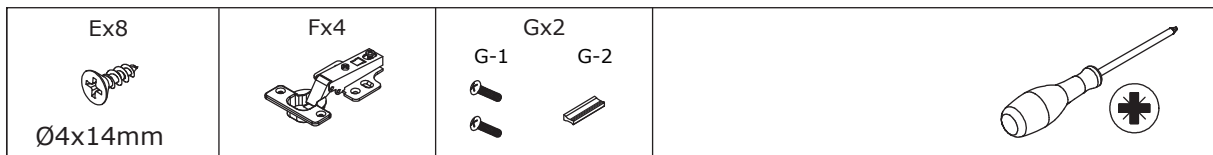
L



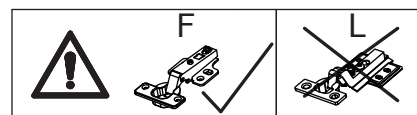
F



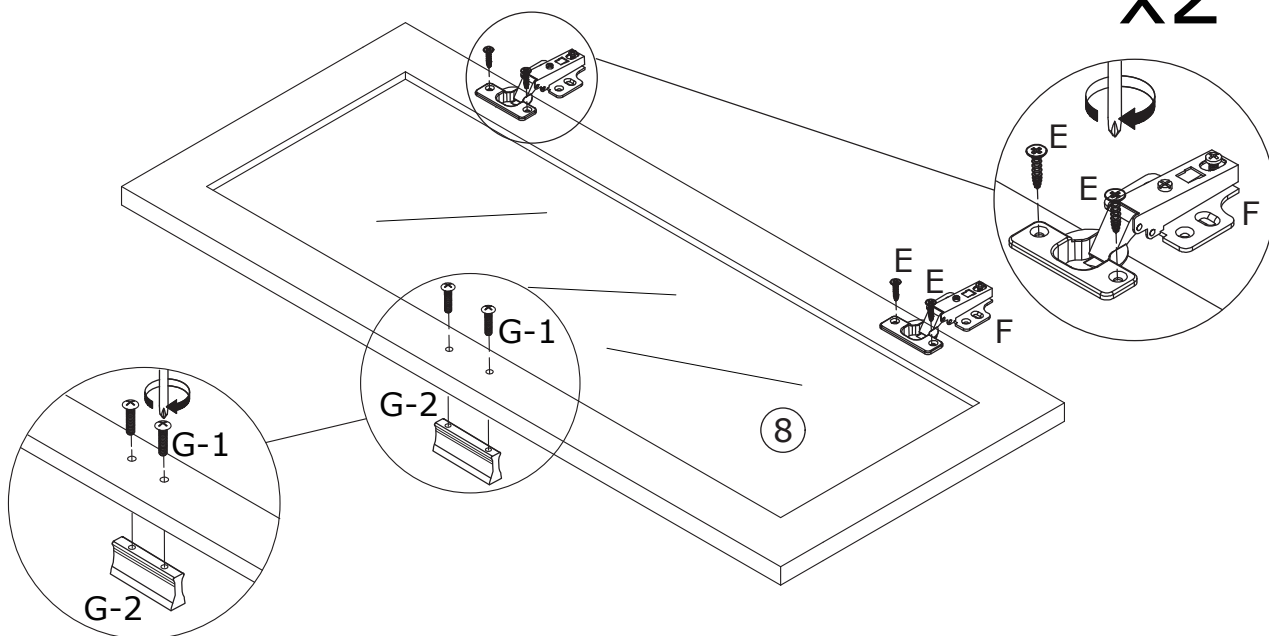
19



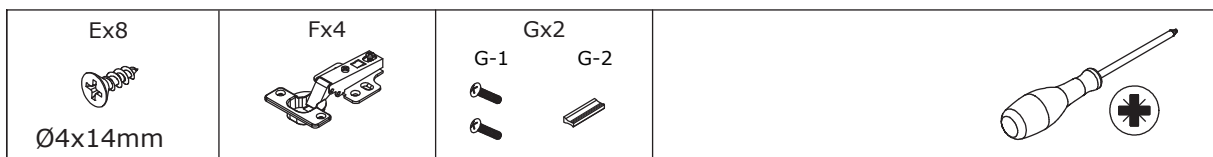
Fix (F) on plate 8 with (E)
(G-1) and (G-2) are locked on plate 8



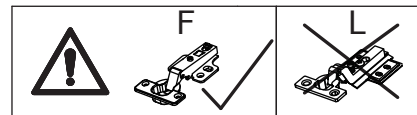
x2



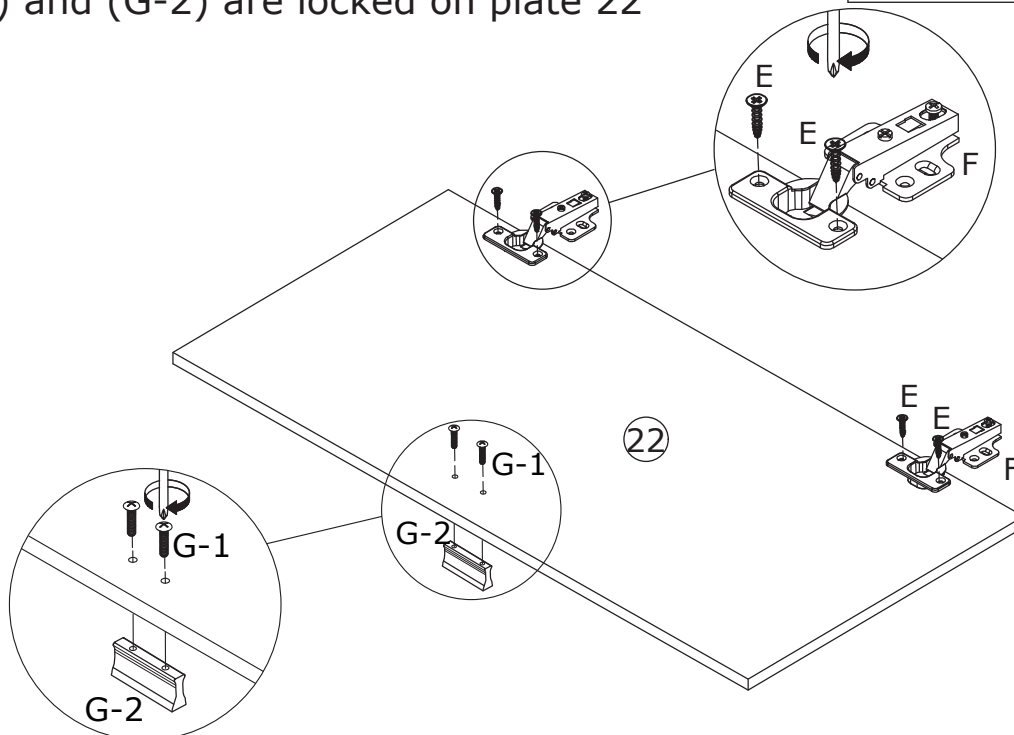
20




Fix (F) on plate 22 with (E)
(G-1) and (G-2) are locked on plate 22

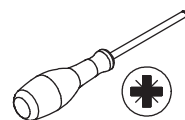


x2

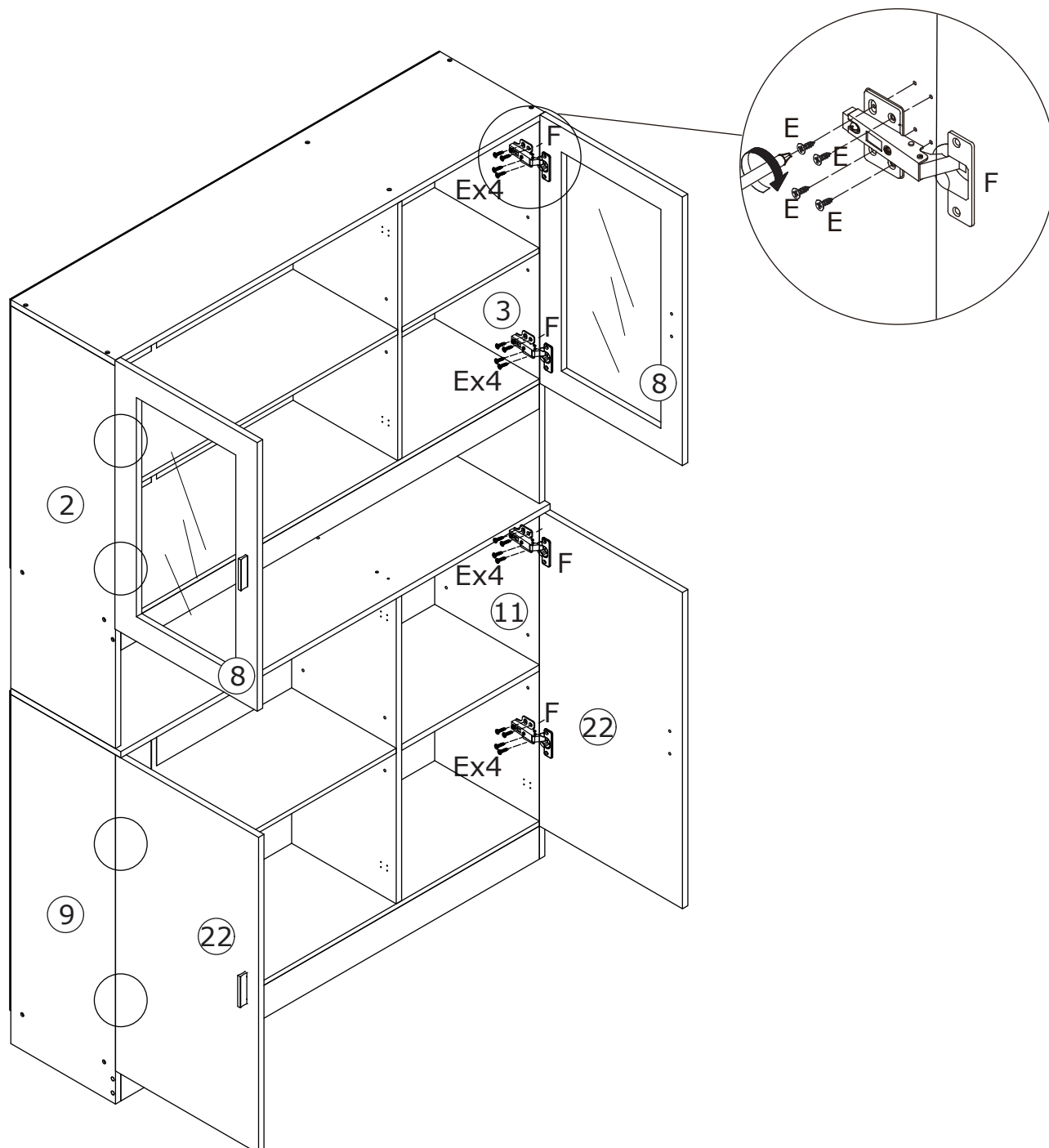
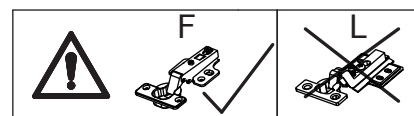


21

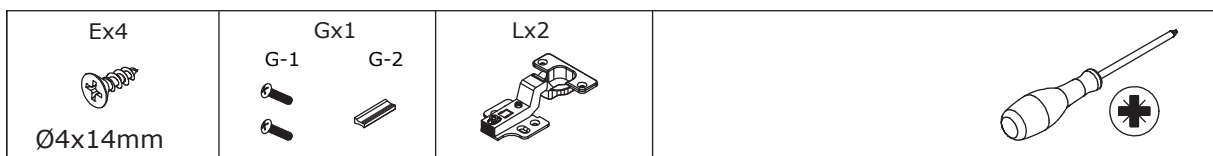
Ex32

 Ø4x14mm



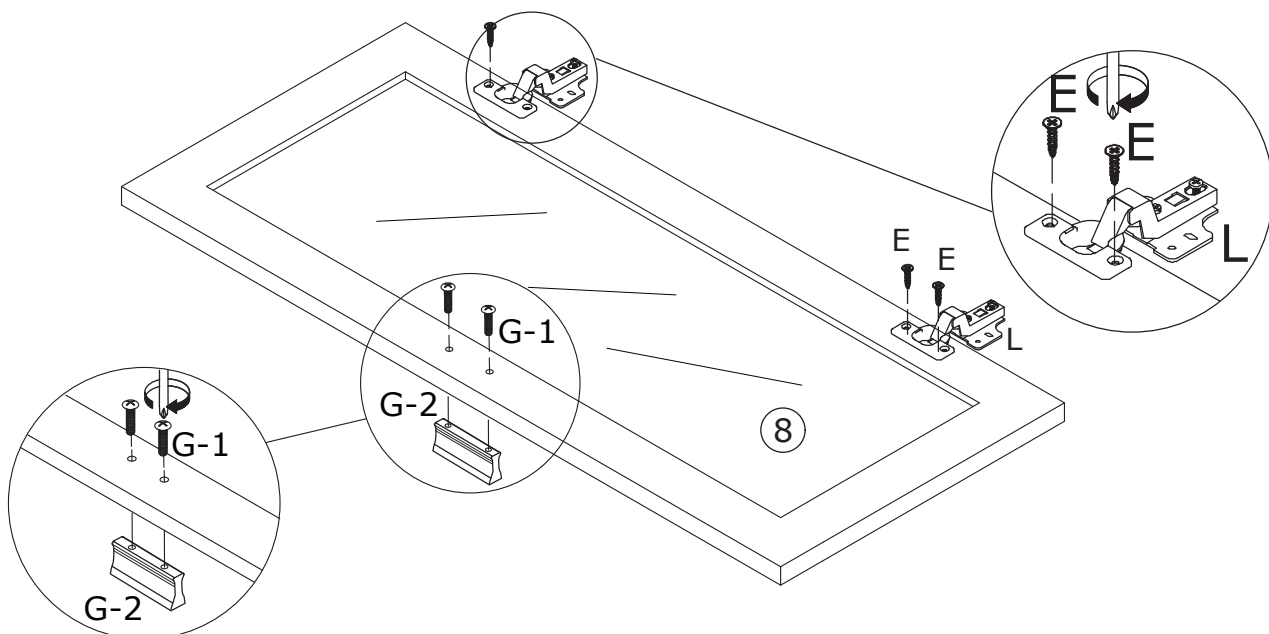
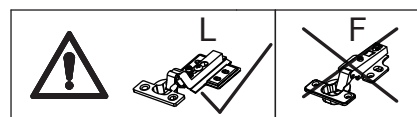
Please note:
 Please use (L) for the middle partition and
 (F) for the left and right sides.



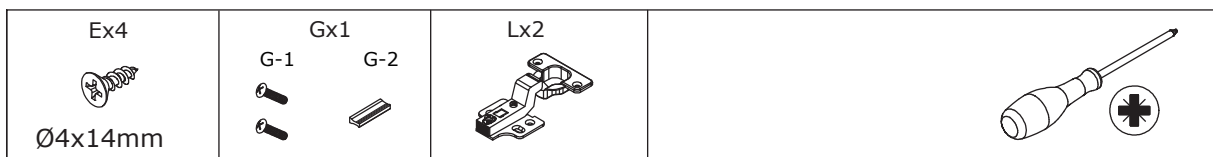
22



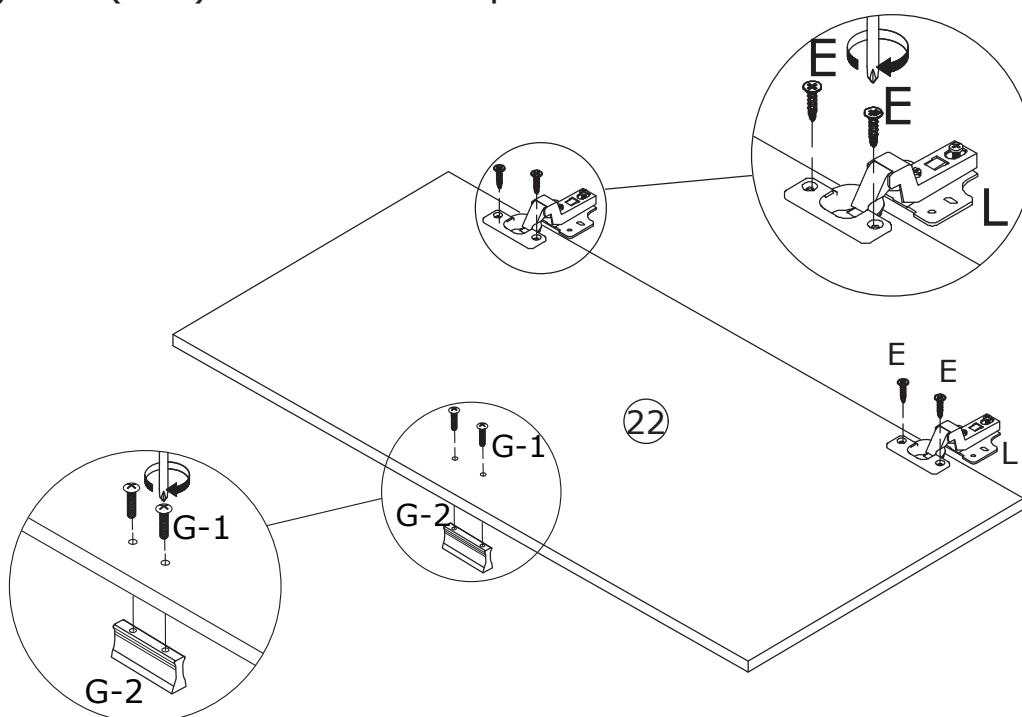
Fix (L) on plate 8 with (E)
(G-1) and (G-2) are locked on plate 8



23



Fix (L) on plate 22 with (E)
(G-1) and (G-2) are locked on plate 22

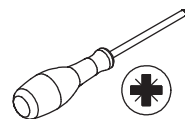


24

Ex16

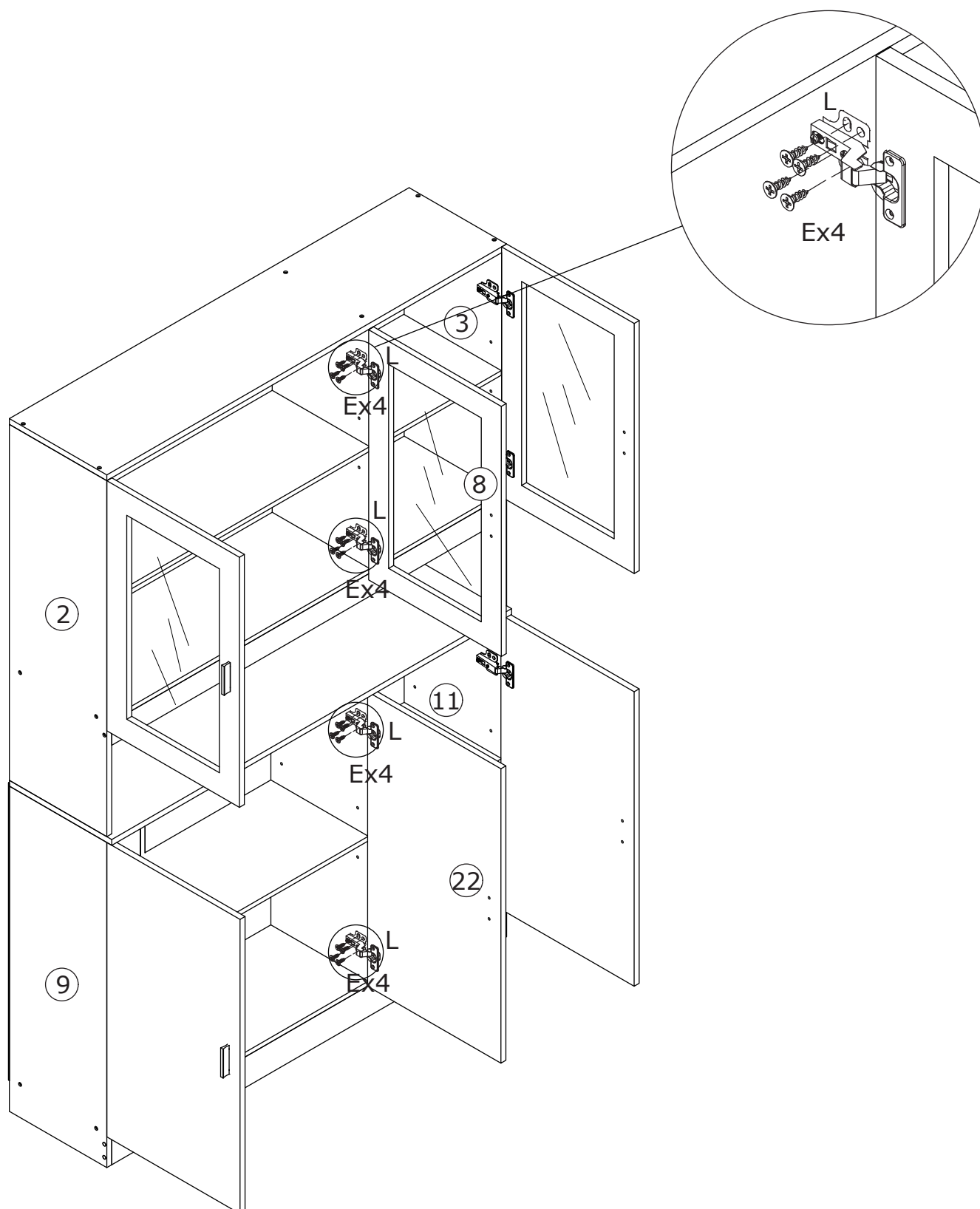


Ø4x14mm

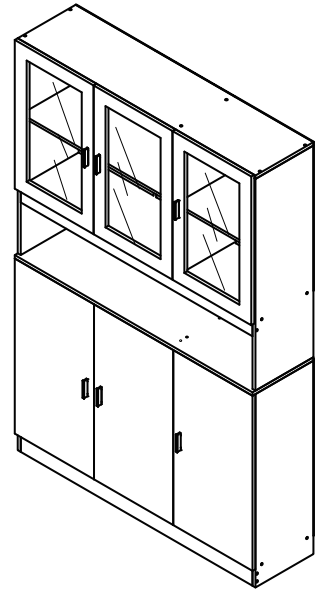


Please note:

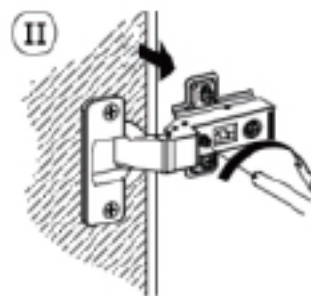
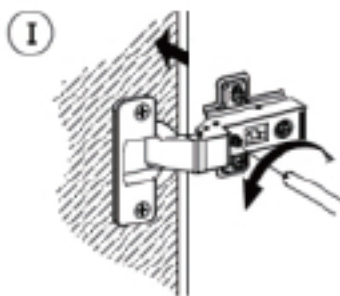
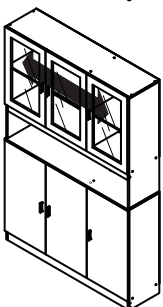
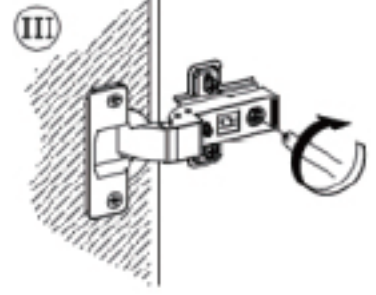
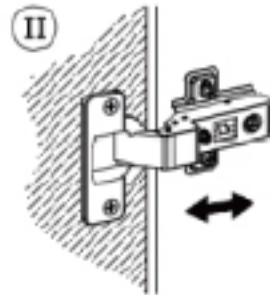
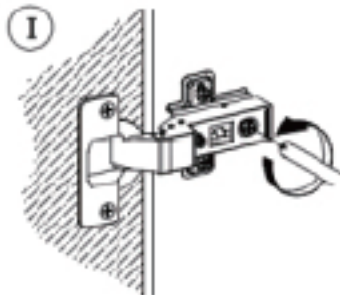
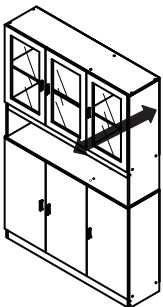
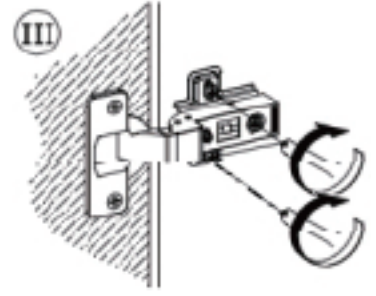
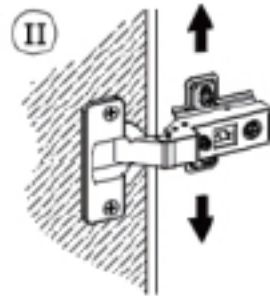
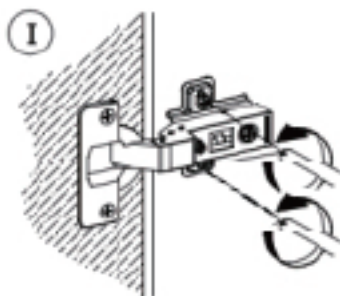
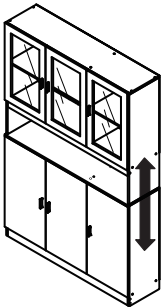
Please use (L) for the middle partition and
(F) for the left and right sides.



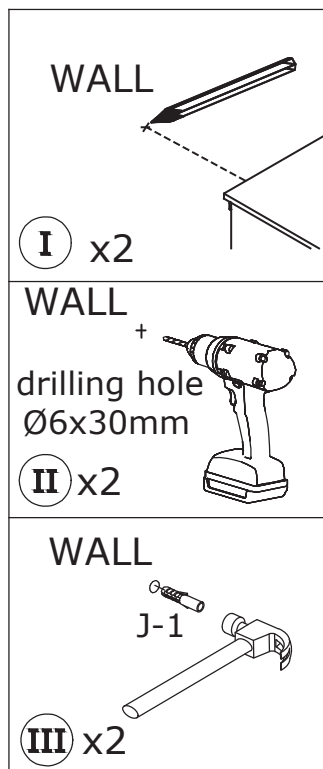
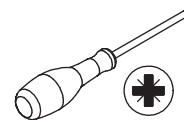
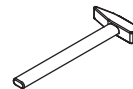
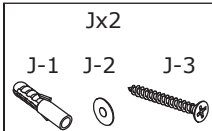
Adjust length of hinges to avoid a gap of doors.



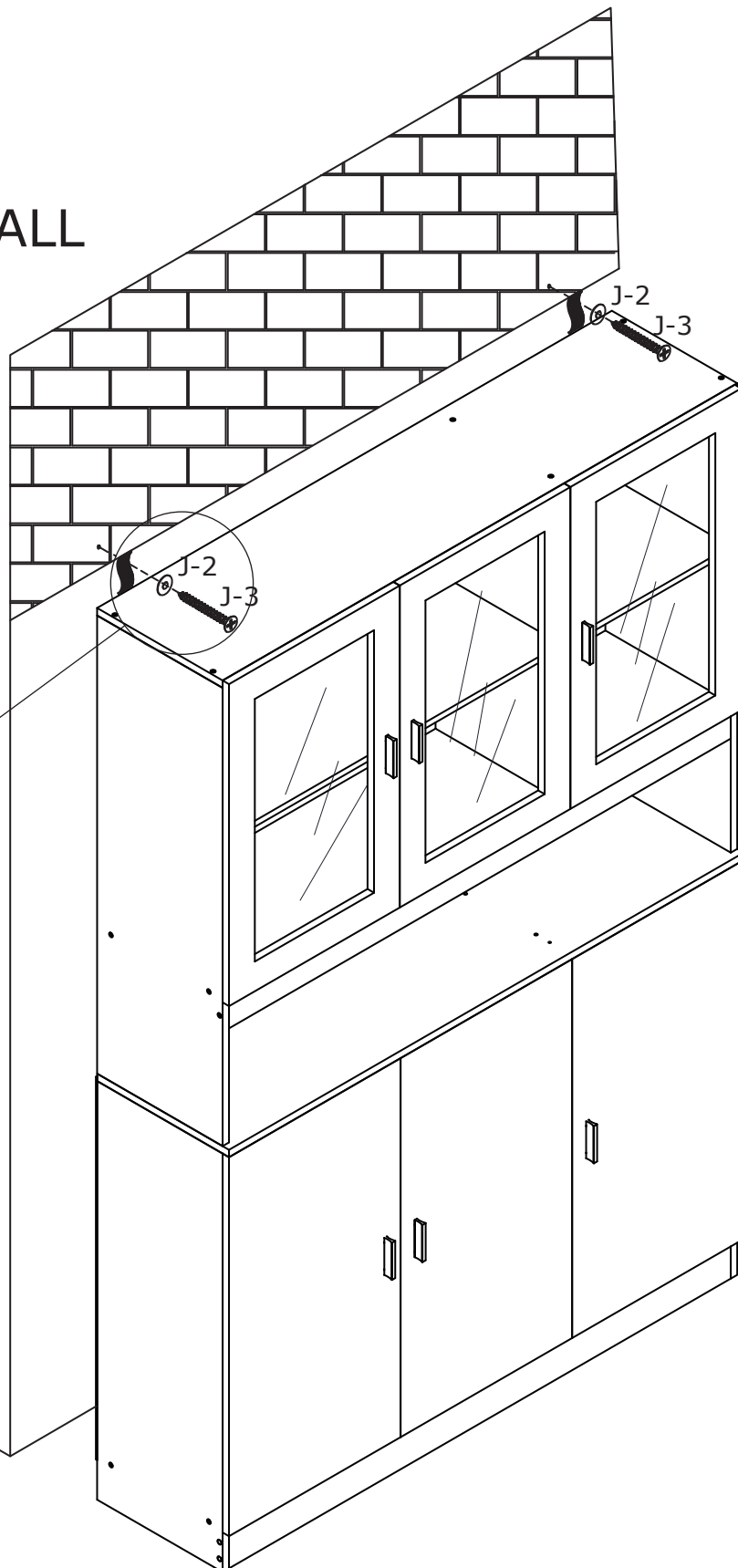
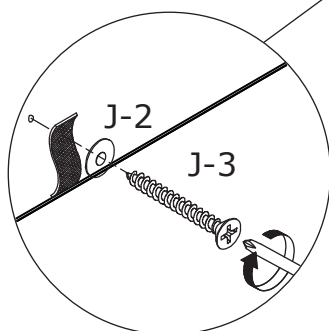
If there is misalignment after you install, adjust the screw to the best condition



26



WALL



WARRANTY

WARRANTY CLAIMS

- There is a 30-day warranty for broken furniture or any other problems that do not work properly. The warranty will start from the date of purchase which must be verified by proof of purchase.
- Before making a claim, we may be able to answer your query, simply call us. Please leave your purchase order number, along with some details of the problem, if you want a replacement part. We will arrange within 48 hours. If there is out of stock, we will reply with a shipping date.
- The product must be used in accordance with the instructions provided. For health reasons.
- For other reasons, if the furniture needs to be returned, it must be cleaned and dried and operated within 30 days of receipt.

Type of Warranty Claim

- Failure to follow the furniture instructions will invalidate the warranty. Attention please.
- Does not include damage during installation, but includes damage during transportation.

Scope of responsibility

- Shall not bear any responsibility for misuse or user damage and / or loss of parts during the installation of furniture.
- After using, the damage and scratches of the furniture are not covered by the warranty.

The Warranty Relates to All Bought in The Us and Covers The Following Areas

- Sheet parts: 1 month from the date of purchase.
- Electrical parts: 1 month from the date of purchase.

RETURNS

CHANGED YOUR MIND AND NEED TO RETURN YOUR ITEM?

PLEASE FOLLOW THE BELOW INSTRUCTIONS:

- If you have purchased and have simply changed your mind, follow the retailer's instructions for returns.

DEFECTIVE ITEMS

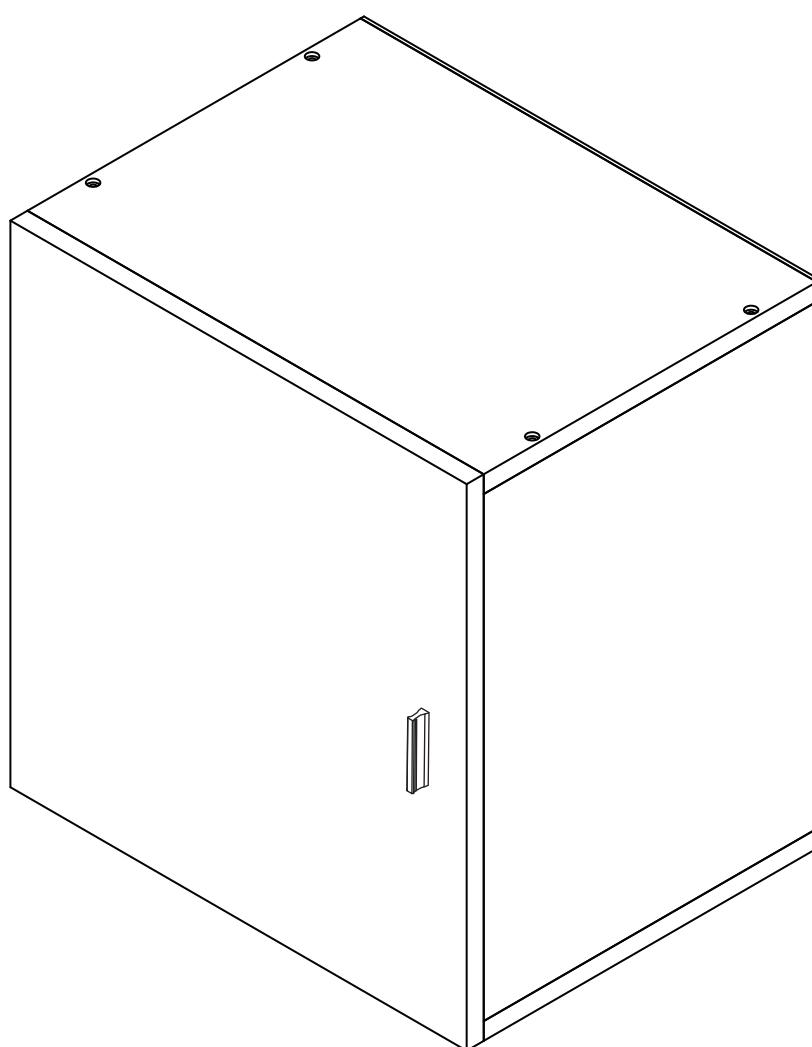
- If your item is defective in any way, i.e. it doesn't work but you can't identify why, in the first instance, please call us.

DAMAGED ITEMS

- If you receive an order with obvious shipping damage from the retailer, then we suggest the delivery is refused. If the delivery has been accepted and then shipping damage is found, please follow the specific instructions advised by the retailer.
In all circumstances please save all packaging material and paperwork for the order. Please be aware that if you dispose of packaging material or attempt to return the merchandise without contacting the fulfiller, you jeopardise your chances of making a claim, and you may not receive a credit for the return.

PRODUCT INSTRUCTION

KF210163-01



WARNING

Serious or fatal crushing injuries can occur from furniture tip-over. To help prevent tip-over.

- Place heaviest items in the lowest drawers.
- Do not set TVs or other heavy objects on the top of this product.
- Never allow children to climb or hang on drawer, door, or shelves.
- Never open more than one drawer at a time.
- Use of tip-over restraints, only reduces, but does not eliminate, the risk of tip-over.
- Never open more than one drawer at a time.

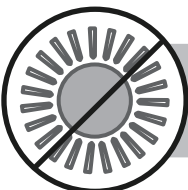
MAINTENANCE TIPS



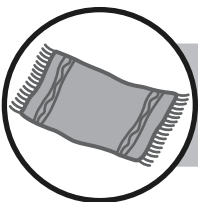
Never let liquids or damp cloths sit on this furniture.



Never use chemical cleaning products. They can damage the finish. For cleaning, use only a slightly damp cloth and wipe dry.



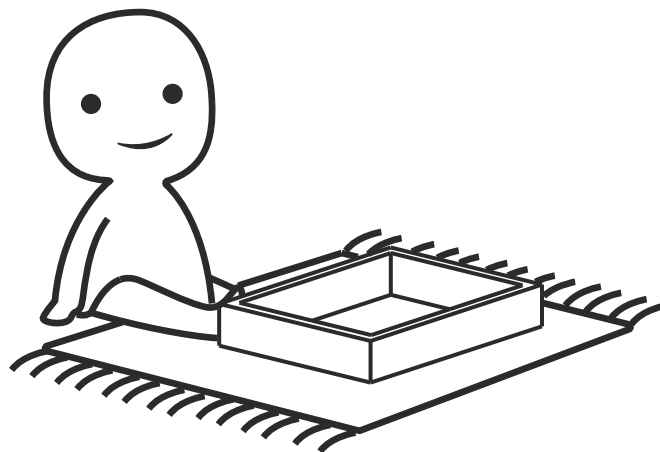
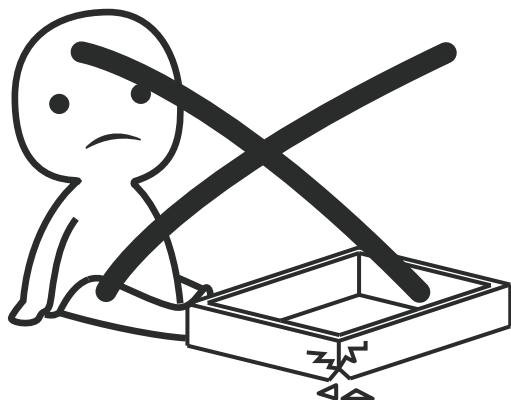
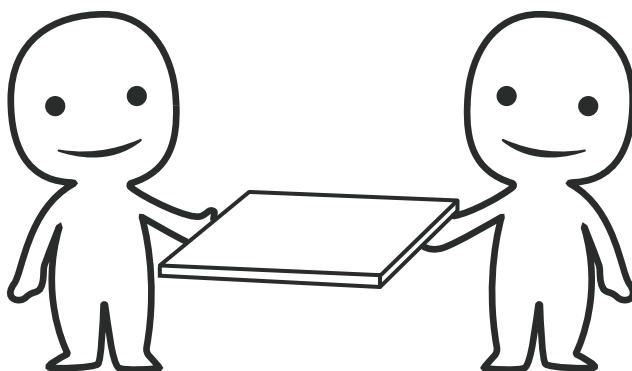
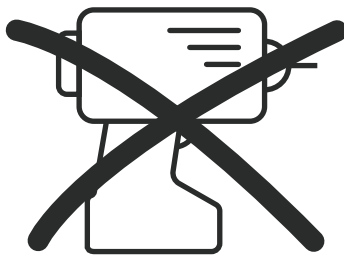
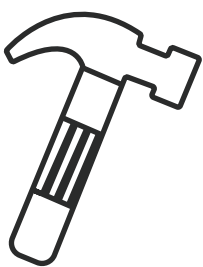
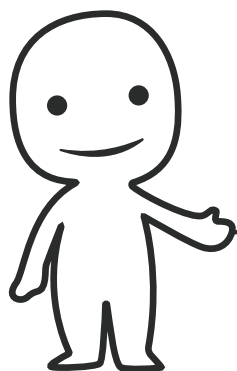
To avoid dulling of finish, do not place furniture in direct sunlight



Do not put plastic or rubber rings under appliances. Use cloth or felt protectors.



To clean, use a soft or slightly damp cloth, then wipe with a clean, dry cloth.



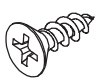
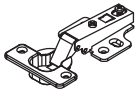


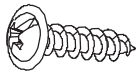



GB

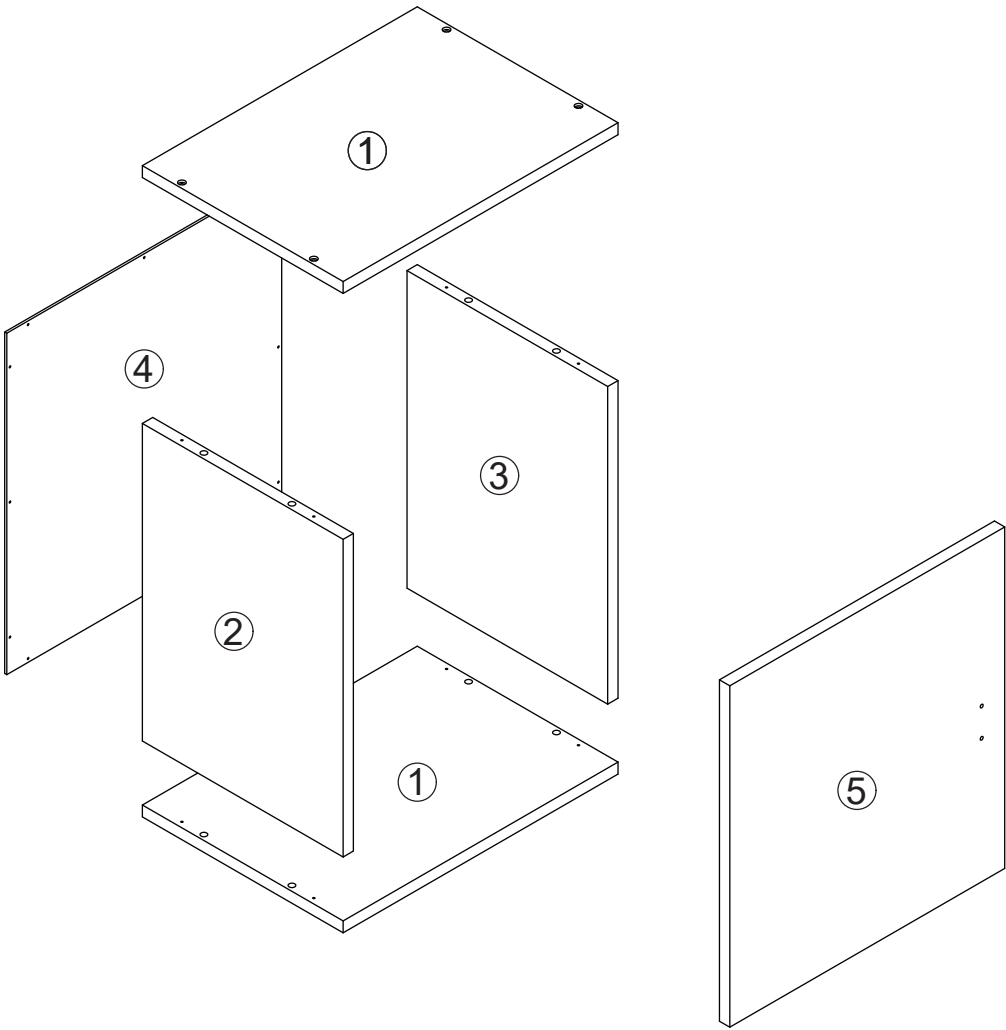
Safety information

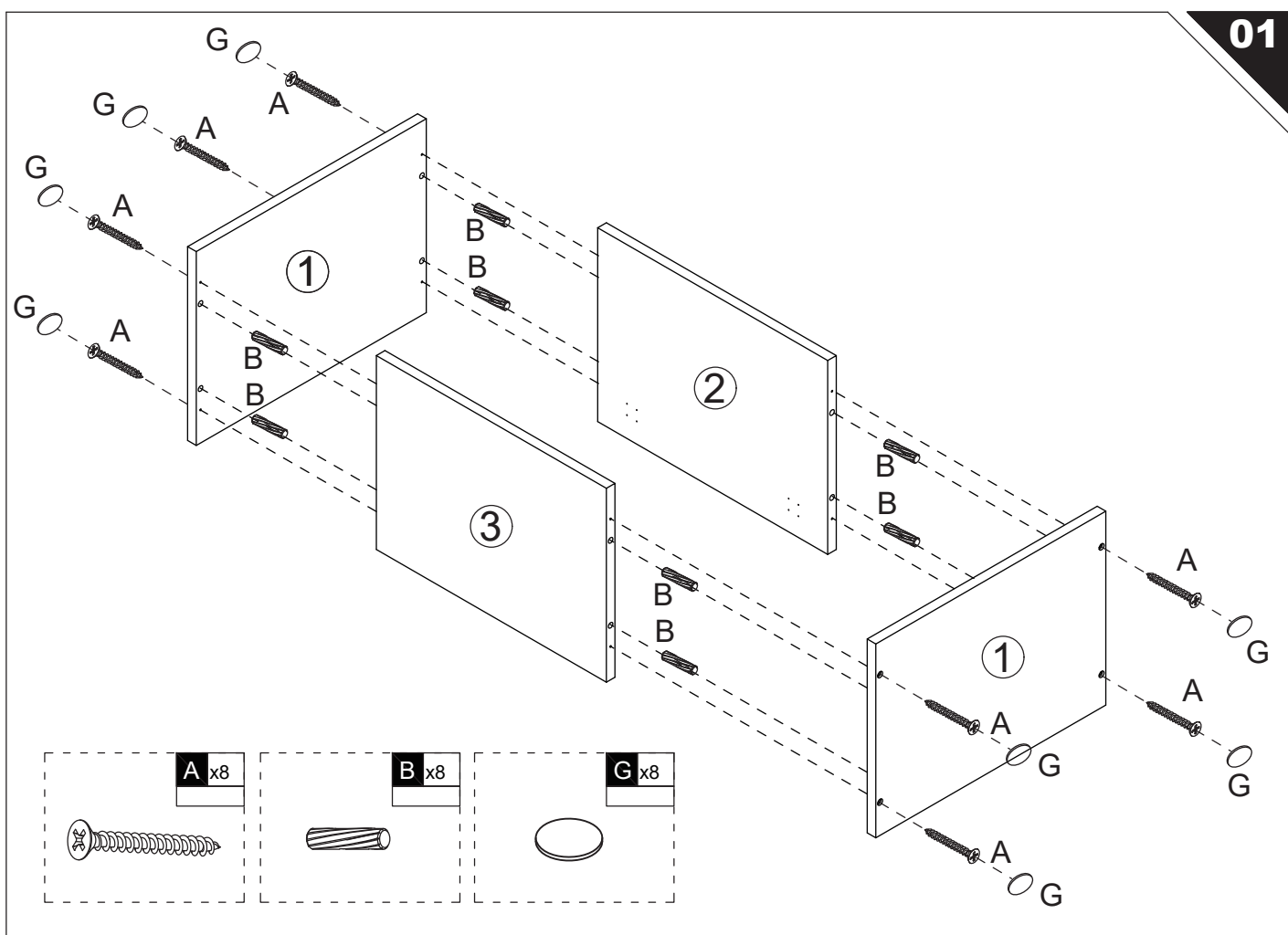
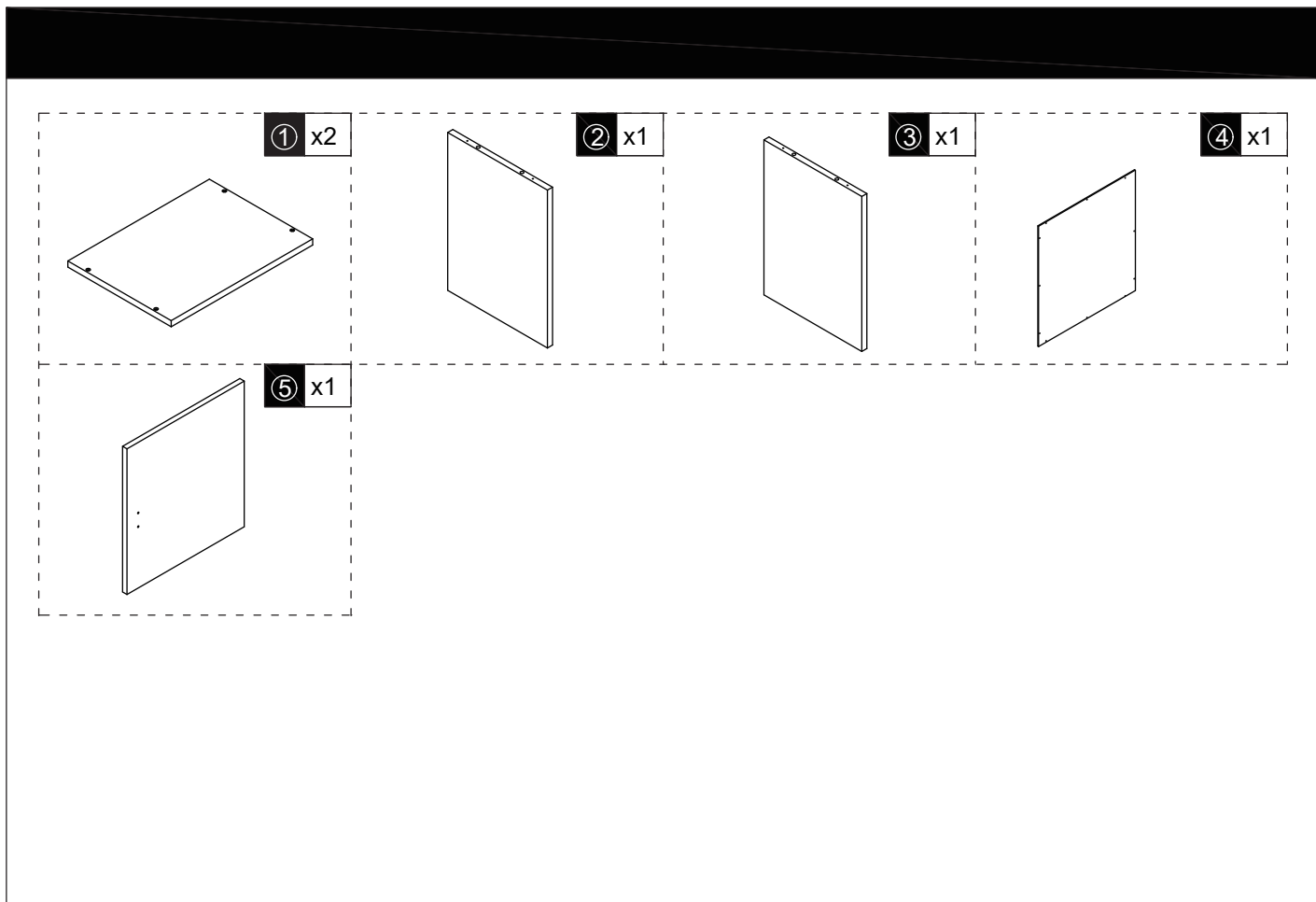
- Important information
- Please read closely and carefully
- Save this information

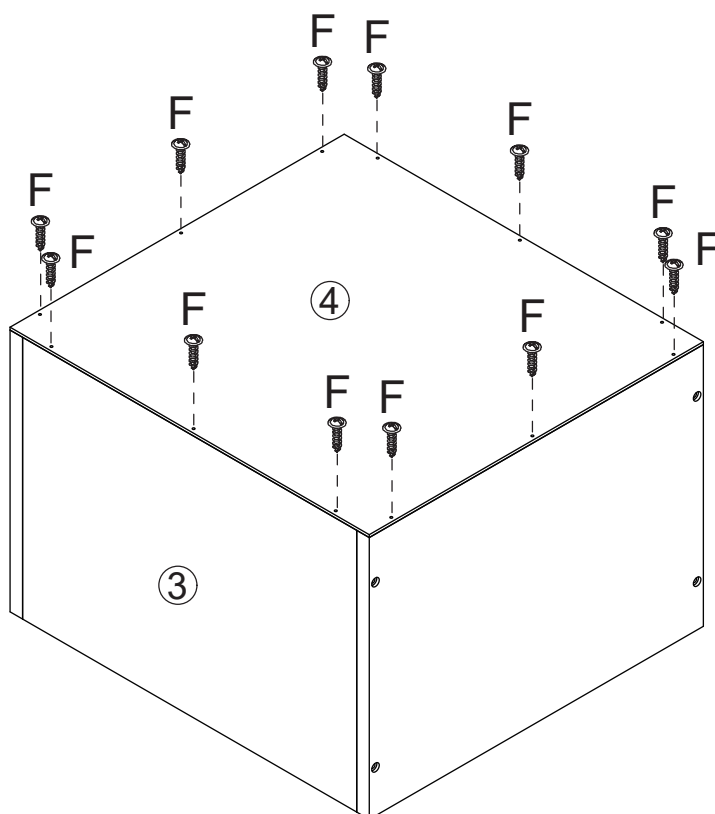
Hardware List

		A x8		B x8		C x12 +1(spare)		D x2
		E x1		F x12		G x8		

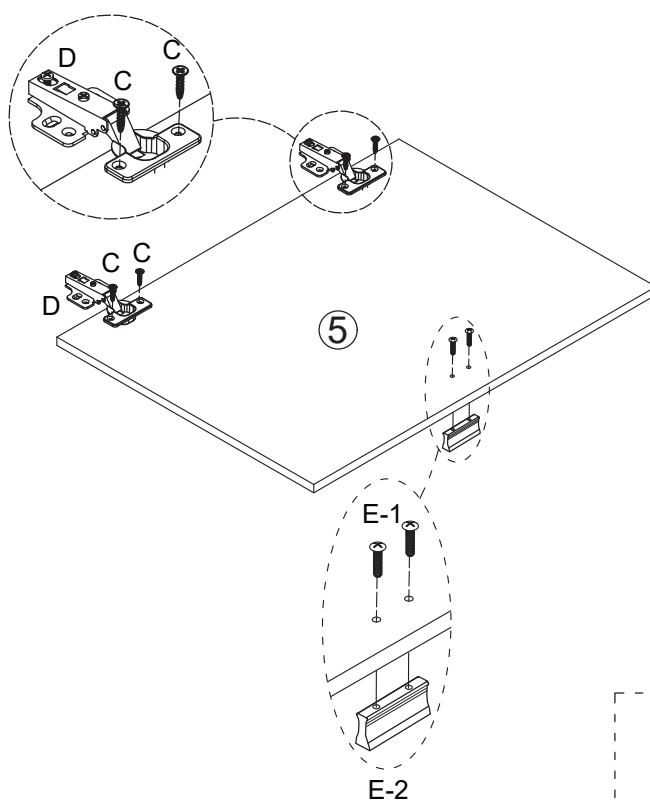
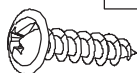
Parts List



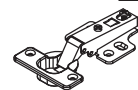




F x6



D x2

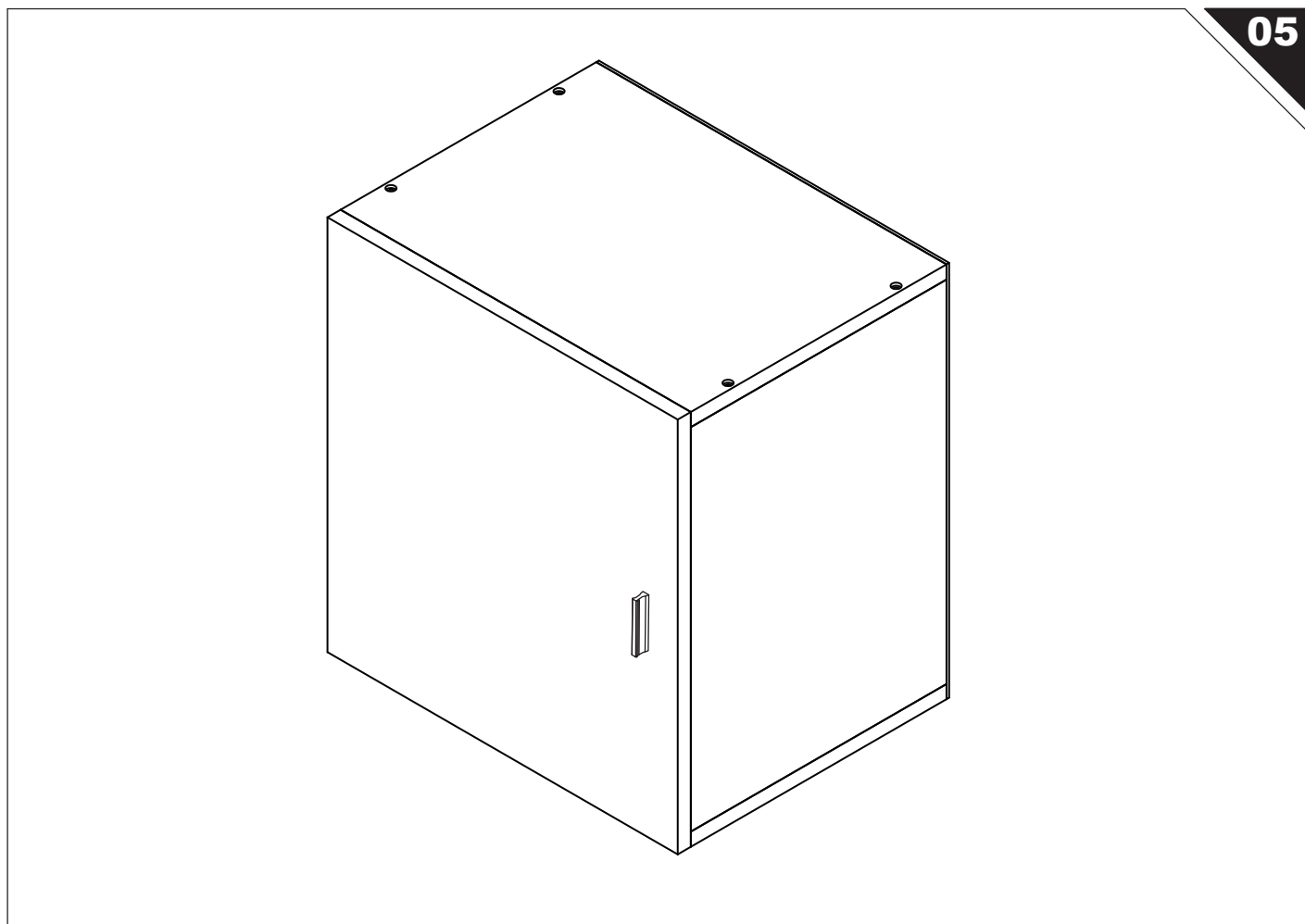
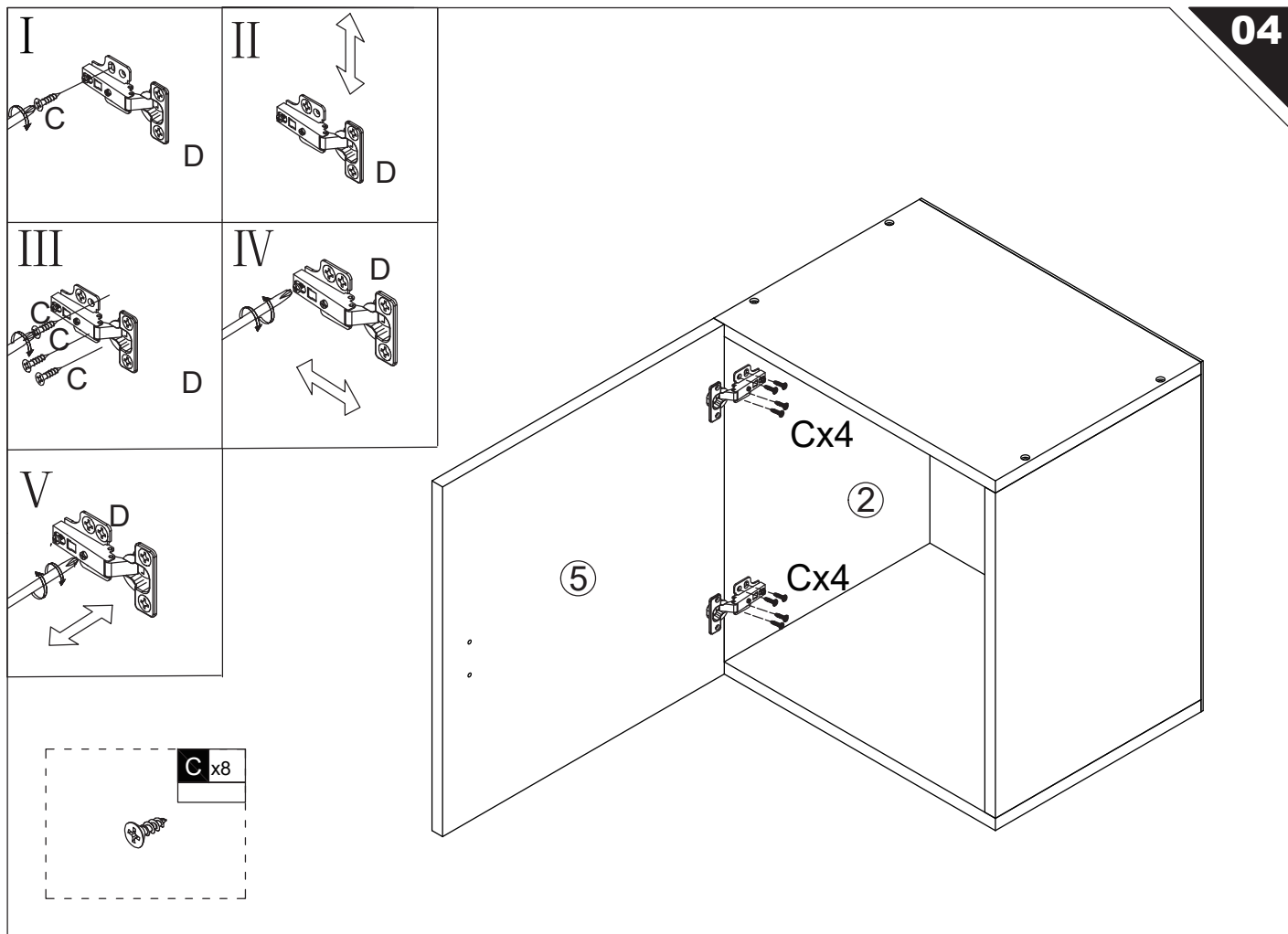


C x4



E x1





GB Safety information

- Important information
- Please read closely and carefully
- Save this information



IMPORTANT. It is imperative that the furniture be installed according to instructions by someone properly qualified to complete the task. Installation of electrical or plumbing fixtures should only be performed by trained professionals.

The furniture must be anchored to the wall to prevent it from tipping over. Improper installation or failure to use wall fasteners can prevent the item from functioning properly and may cause damage and/or severe injury.

Wall fasteners are not included because of the large variety of walls and wall materials. Please ask a specialized dealer for wall fasteners appropriate to your specific needs. You are responsible for anchoring the items to the wall and for the materials used for that purpose.

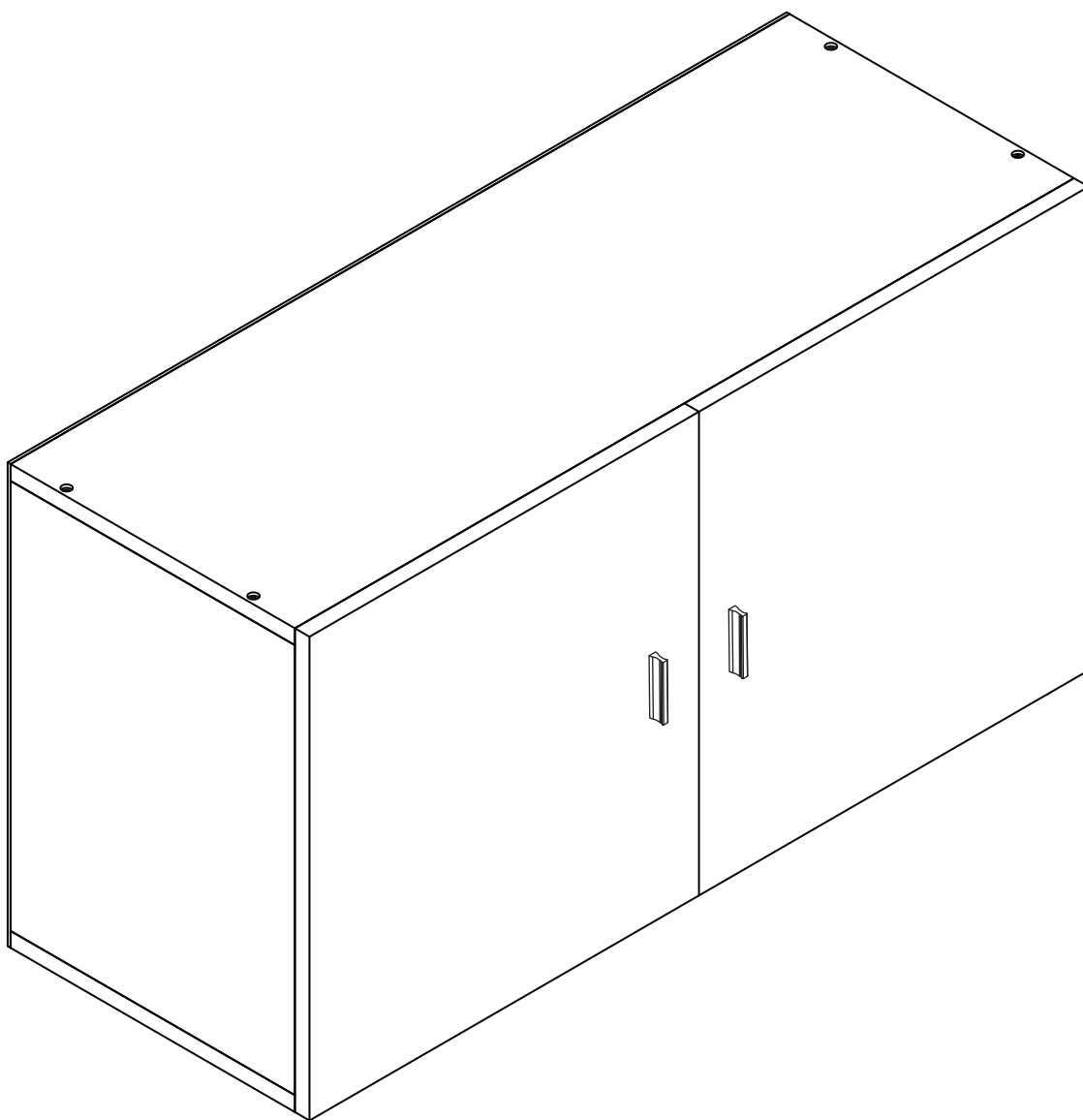
Please observe the maximum load capacity as specified in the assembly instructions. Keep the bag containing the fittings, the fittings themselves and other packaging material out of reach of babies and children. The small parts can be swallowed and therefore pose a choking hazard.

Failure to follow handling, operation or assembly instructions, exchanging components, making changes to the product or using materials which differ from the original parts will result in voiding all liability claims and warranties. GERMANIA accepts no liability for personal or material damage due to improper installation or failure to properly anchor the item to the wall. We assume no liability as manufacturer for excessive loads placed on a unit by individuals, playing children or other causes.

Questions about products or services
24 hours Online Email : feedbackstation@163.com

PRODUCT INSTRUCTION

KF210163-02



WARNING

Serious or fatal crushing injuries can occur from furniture tip-over. To help prevent tip-over.

- Place heaviest items in the lowest drawers.
- Do not set TVs or other heavy objects on the top of this product.
- Never allow children to climb or hang on drawer, door, or shelves.
- Never open more than one drawer at a time.
- Use of tip-over restraints, only reduces, but does not eliminate, the risk of tip-over.
- Never open more than one drawer at a time.

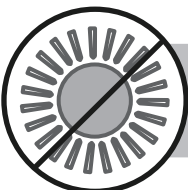
MAINTENANCE TIPS



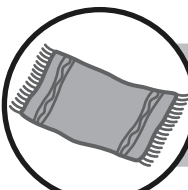
Never let liquids or damp cloths sit on this furniture.



Never use chemical cleaning products. They can damage the finish. For cleaning, use only a slightly damp cloth and wipe dry.



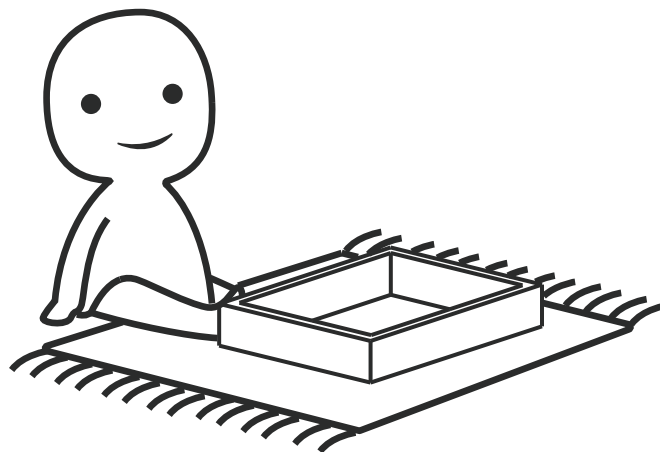
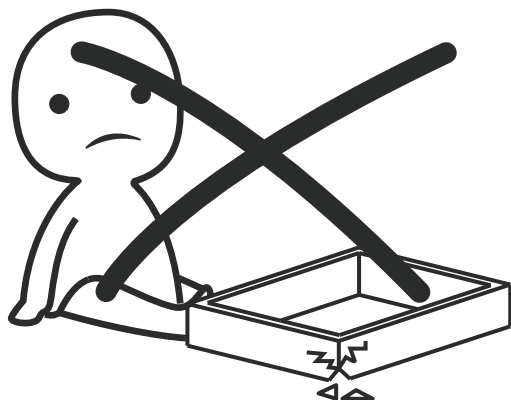
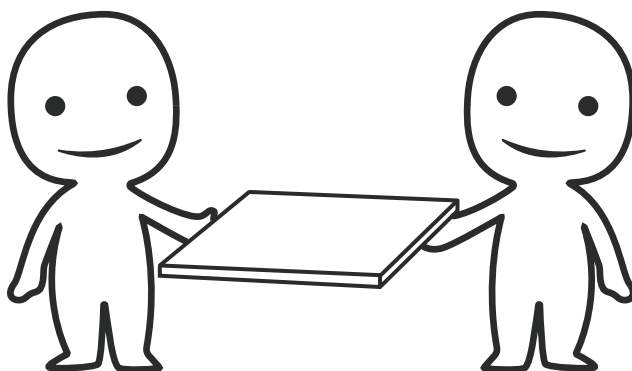
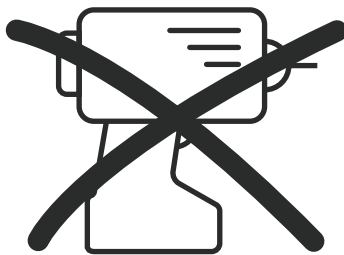
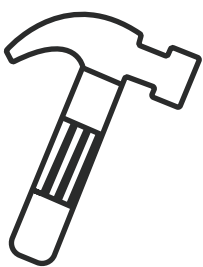
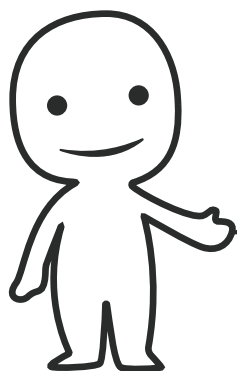
To avoid dulling of finish, do not place furniture in direct sunlight



Do not put plastic or rubber rings under appliances. Use cloth or felt protectors.



To clean, use a soft or slightly damp cloth, then wipe with a clean, dry cloth.



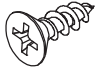
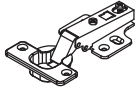

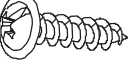




GB

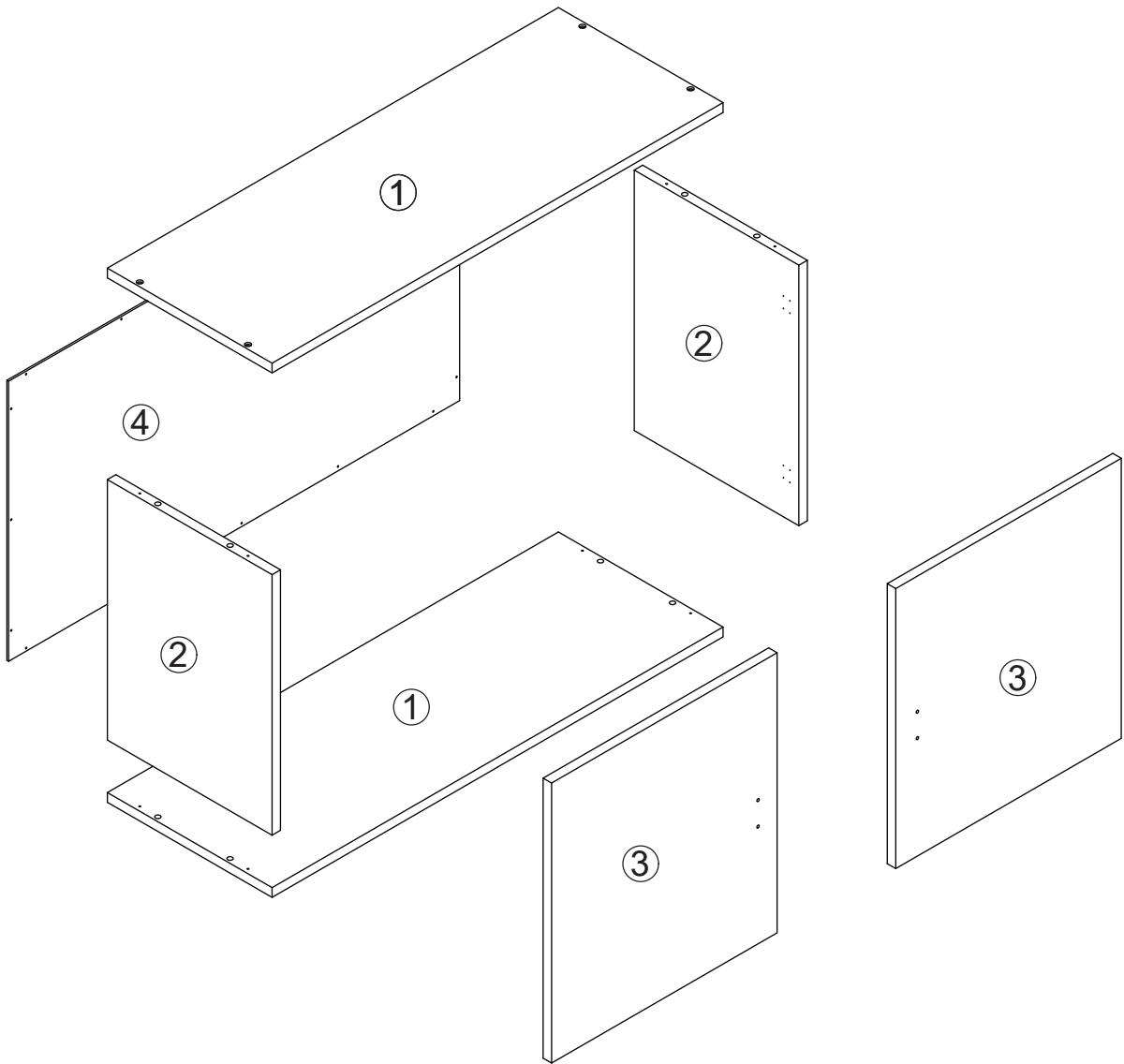
Safety information

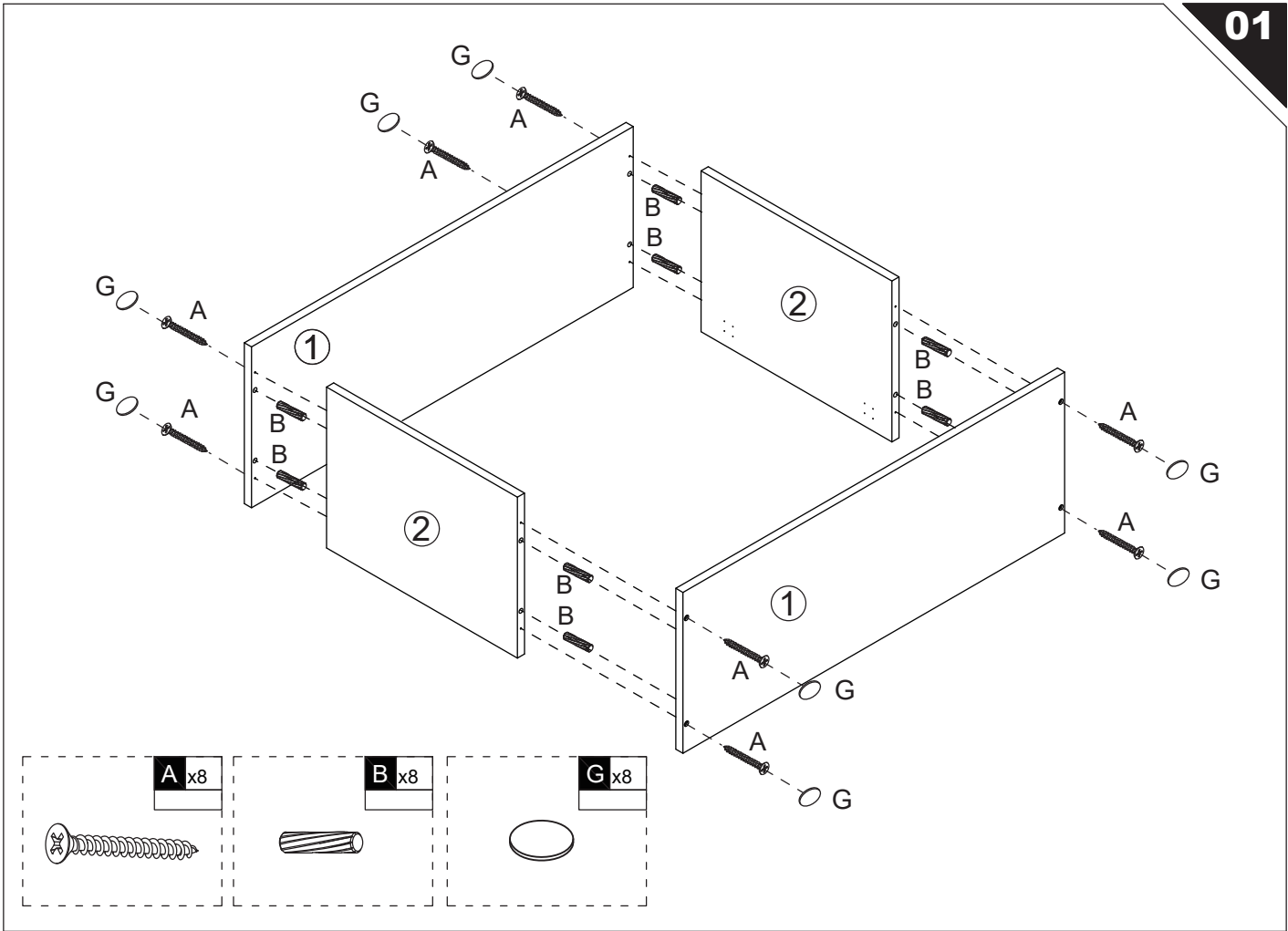
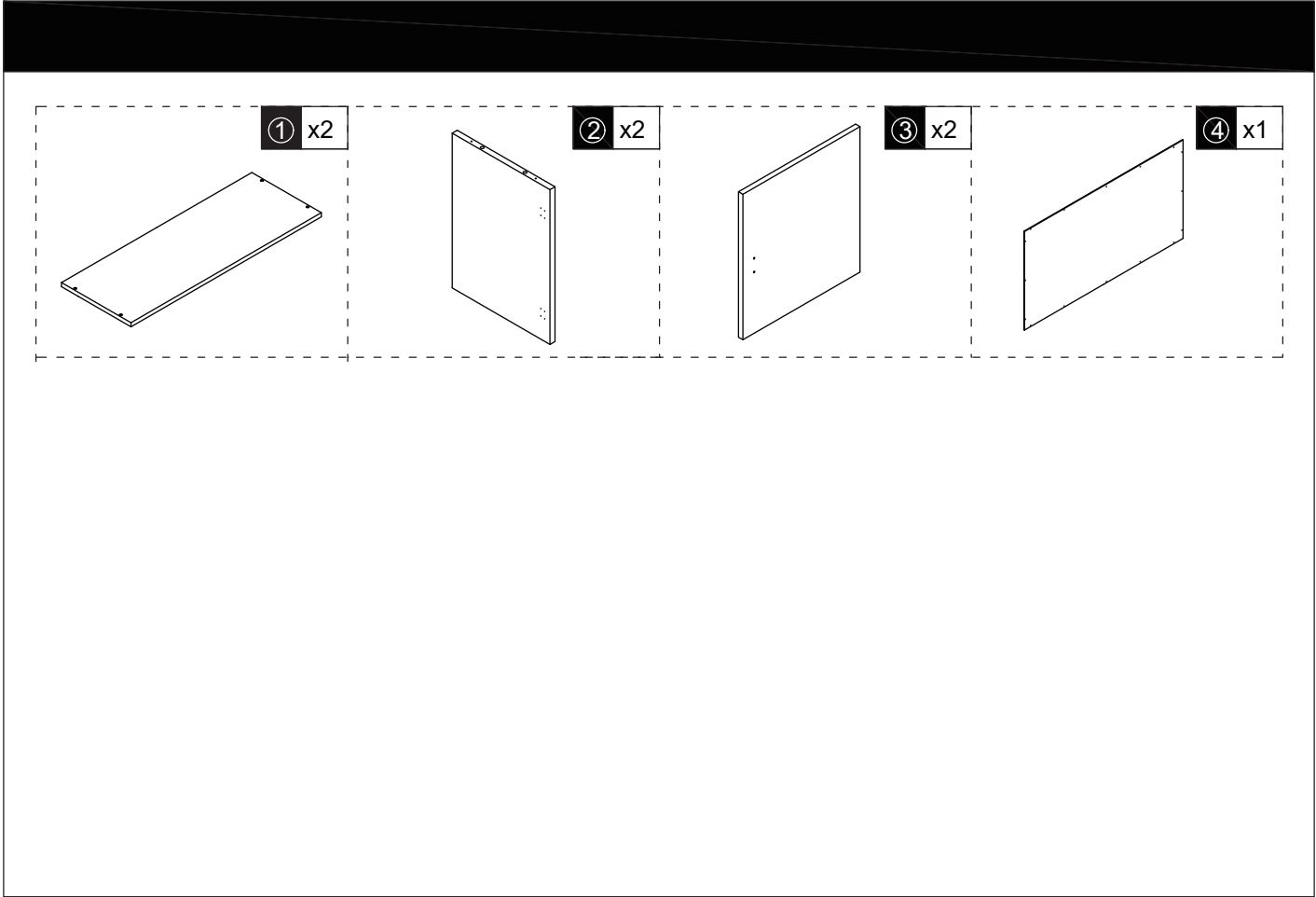
- Important information
- Please read closely and carefully
- Save this information

Hardware List

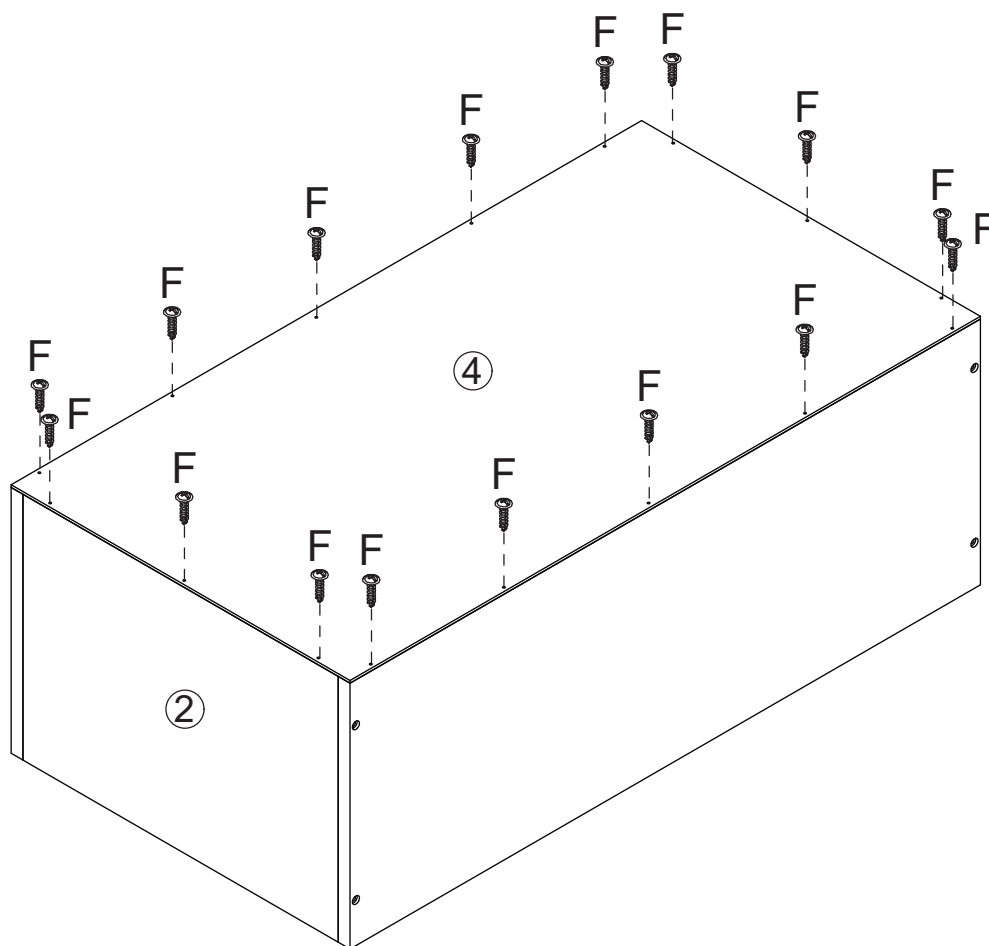
 A x8	 B x8	 C x24	 D x4
 E-1	 F x16	 G x8	 E-2
E x2			

Parts List

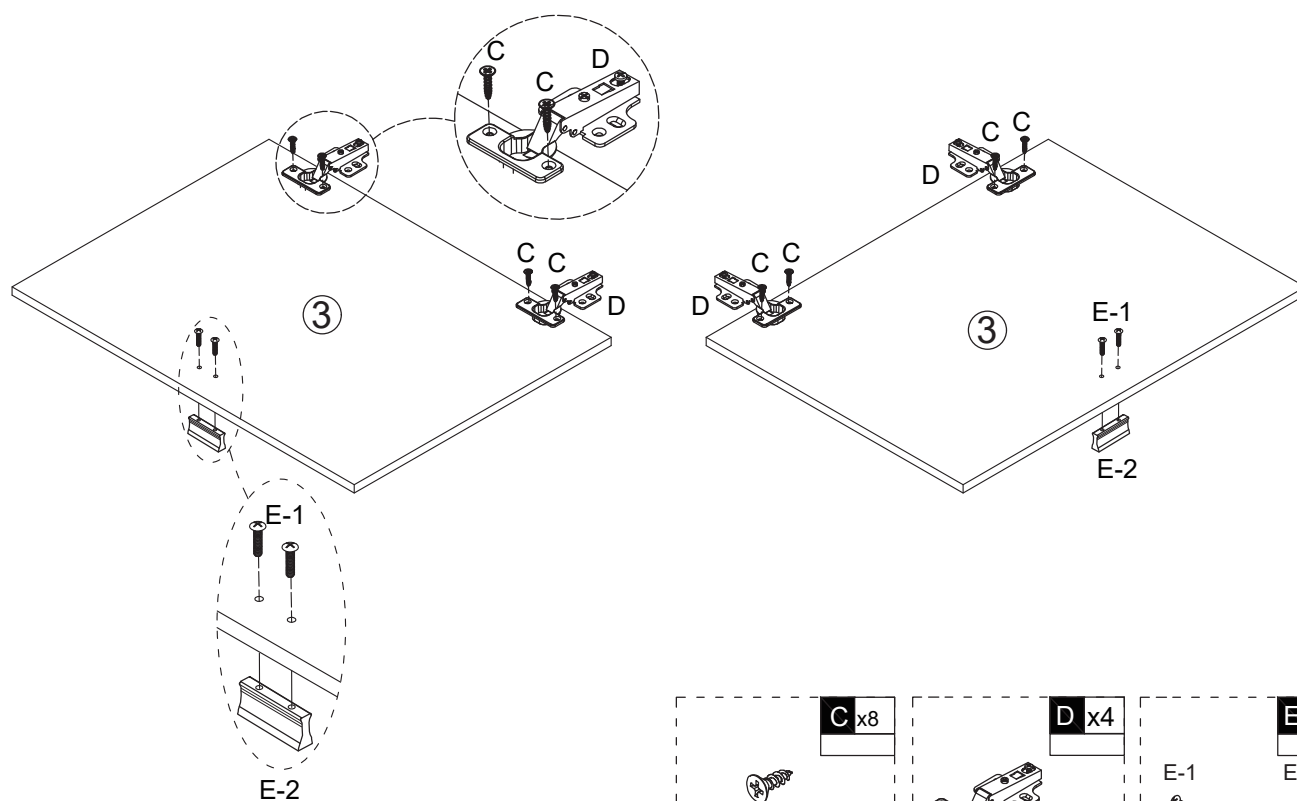


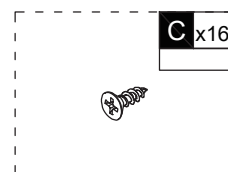
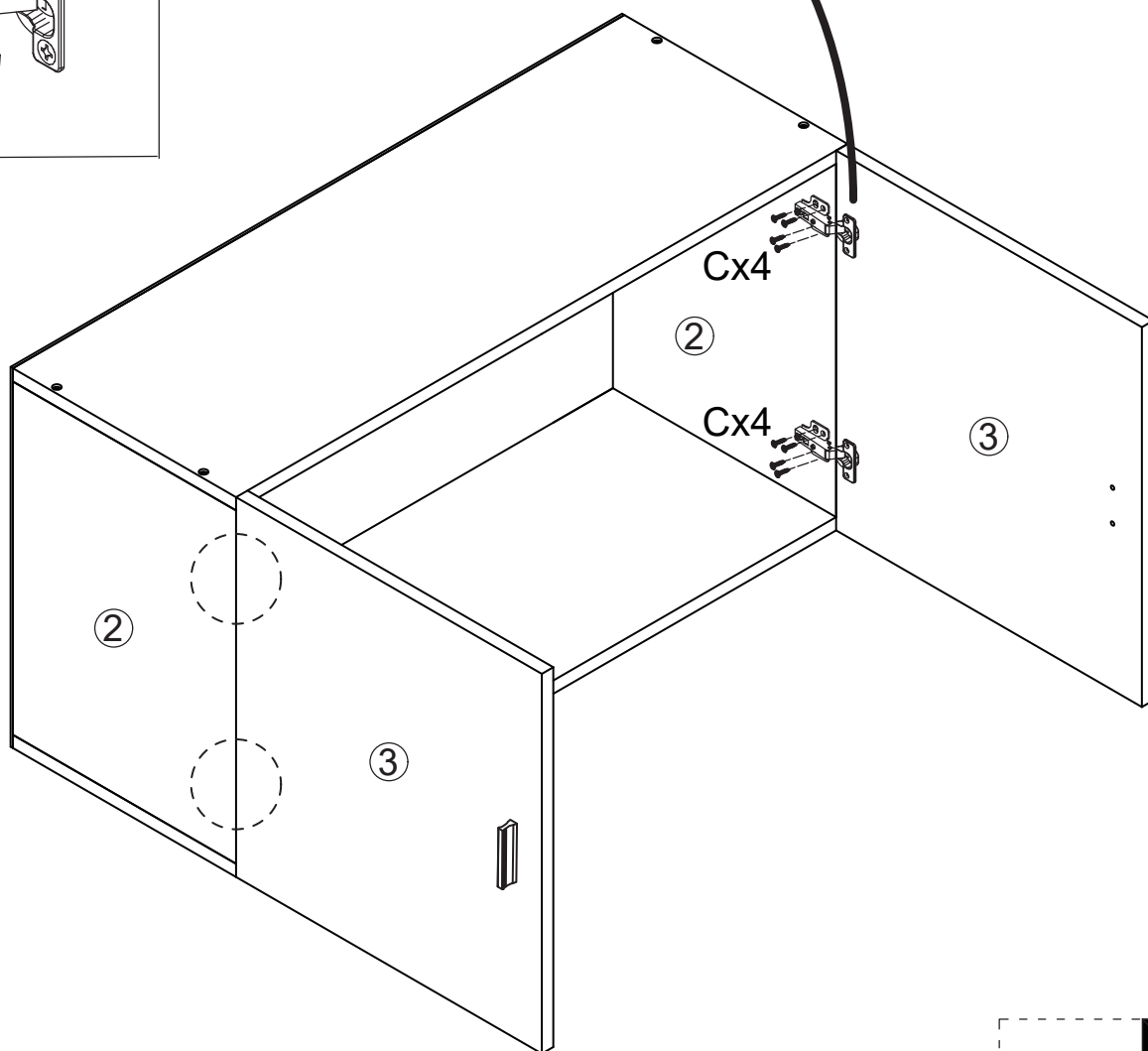
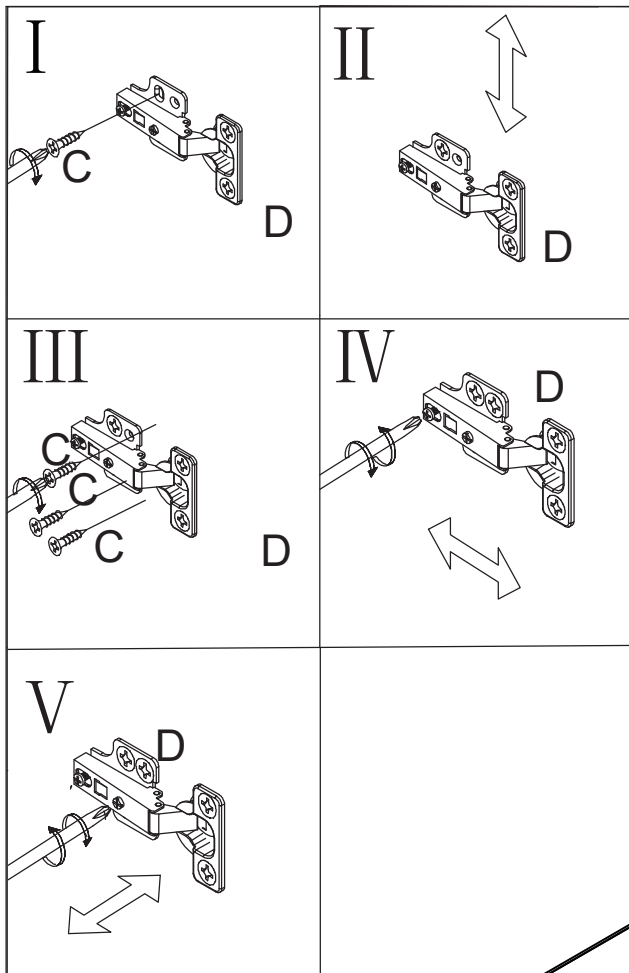


02



03





GB Safety information

- Important information
- Please read closely and carefully
- Save this information



IMPORTANT. It is imperative that the furniture be installed according to instructions by someone properly qualified to complete the task. Installation of electrical or plumbing fixtures should only be performed by trained professionals.

The furniture must be anchored to the wall to prevent it from tipping over. Improper installation or failure to use wall fasteners can prevent the item from functioning properly and may cause damage and/or severe injury.

Wall fasteners are not included because of the large variety of walls and wall materials. Please ask a specialized dealer for wall fasteners appropriate to your specific needs. You are responsible for anchoring the items to the wall and for the materials used for that purpose.

Please observe the maximum load capacity as specified in the assembly instructions. Keep the bag containing the fittings, the fittings themselves and other packaging material out of reach of babies and children. The small parts can be swallowed and therefore pose a choking hazard.

Failure to follow handling, operation or assembly instructions, exchanging components, making changes to the product or using materials which differ from the original parts will result in voiding all liability claims and warranties. GERMANIA accepts no liability for personal or material damage due to improper installation or failure to properly anchor the item to the wall. We assume no liability as manufacturer for excessive loads placed on a unit by individuals, playing children or other causes.

Questions about products or services
24 hours Online Email : feedbackstation@163.com

REF210162-169