

# allen + roth.

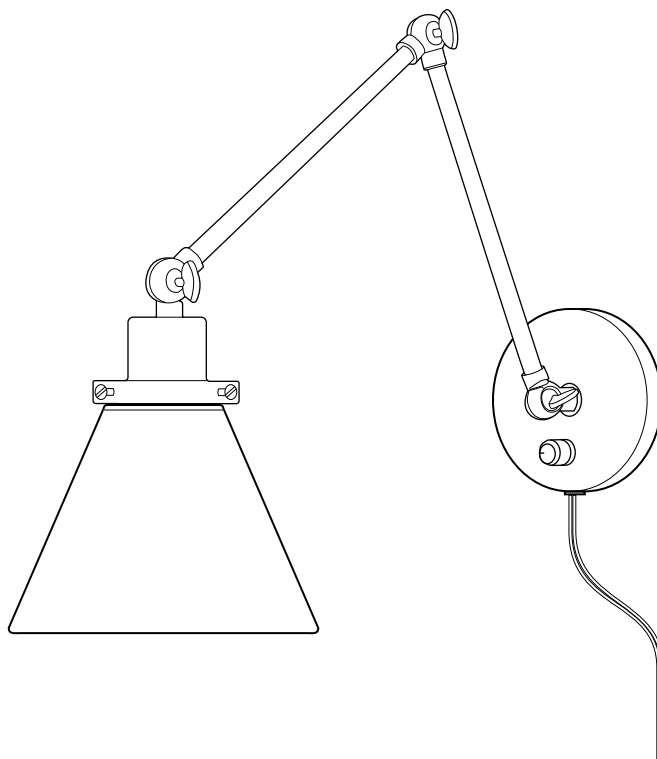
ALLEN + ROTH and logo design are trademarks or registered trademarks of LF, LLC. All rights reserved.

ITEM #5024121/5024123  
MODEL #WS58-1BRZ/WS58-1BNK

## WALL SCNCE

Español p. 13

ATTACH YOUR RECEIPT HERE



Purchase Date \_\_\_\_\_



Thank you for purchasing this ALLEN + ROTH product.

Questions, problems, missing parts?

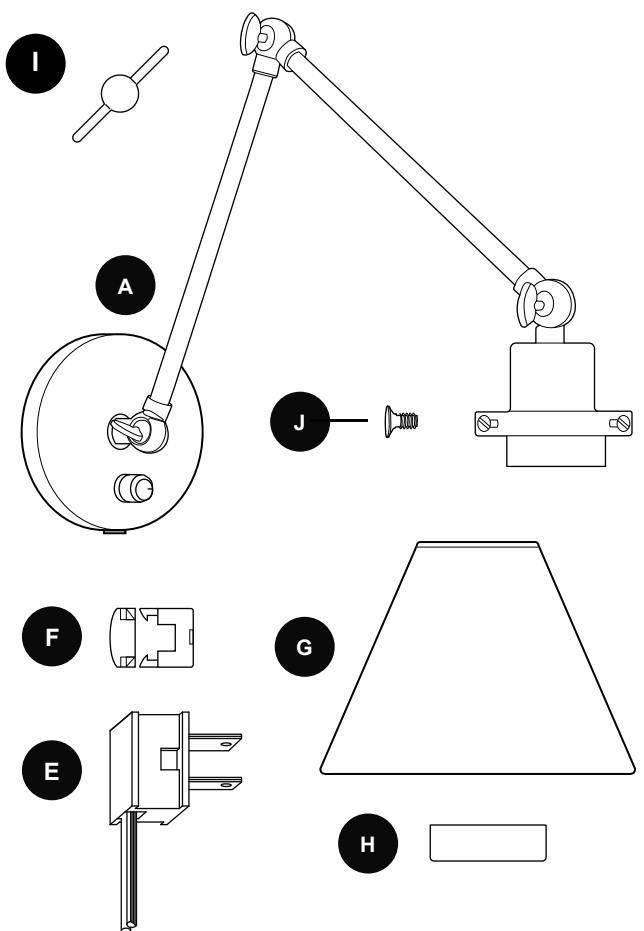
Before returning, contact us on:

**866-439-9800**, 8 a.m.-8 p.m., EST, Monday-Sunday or **ascs@lowes.com**.

TABLE OF CONTENTS	
Package Contents .....	2
Hardware Contents .....	3
Safety Information .....	3
Preparation .....	4
Initial Assembly Instructions .....	5
Plug-in Assembly Instructions .....	6
Hardwire Assembly Instructions .....	8
Final Assembly Instructions .....	10
Care and Maintenance .....	12
Troubleshooting .....	12
Warranty .....	12

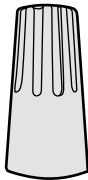
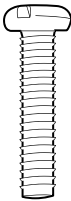
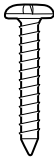
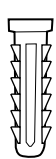
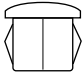
## PACKAGE CONTENTS

PART	DESCRIPTION	QUANTITY
A	Fixture	1
B	Back Plate	1
C	Mounting Plate (preassembled to fixture (A))	1
D	Mounting Plate Screw (preassembled to mounting plate (C))	2
E	Plug (preassembled to fixture (A))	1
F	Cord Lock (preassembled to fixture (A))	1
G	Shade	1
H	Socket Ring (preassembled to fixture (A))	1
I	Lock (preassembled to fixture (A))	3
J	Shade Screw (preassembled to fixture (A))	3



## HARDWARE CONTENTS (shown actual size)

---

AA	BB	CC	DD	EE
				
Wire Connector	Machine Screw	Wall Anchor Screw	Wall Anchor	Cap
Qty. 3	Qty. 2	Qty. 3	Qty. 3	Qty. 1

### SAFETY INFORMATION

**READ AND SAVE THESE INSTRUCTIONS.**

---

### DANGER

- For your protection and safety, carefully read and understand the information provided in this manual completely before attempting to assemble, install or operate this product. Failure to do so could lead to electrical shock, fire or other injuries that could be hazardous or even fatal.
- DO NOT connect this fixture to an electrical system that does not provide a means for equipment grounding. Never use a fixture in a two-wire system that is not grounded. Installing a fixture into an electrical system not having a proper grounding means could cause metal parts of the fixture to carry electrical currents if any of the fixture wires, wire connections or splices were to become broken, cut or loose during the mounting or normal operation of the fixture. Under this condition, anyone coming in contact with the fixture would be subject to electrical shock, which could cause serious injury or death.
- DO NOT connect the BARE or GREEN insulation fixture ground wire to the black (HOT) current-carrying wire or the WHITE (NEUTRAL) house wire. Connection of the BARE or GREEN fixture ground wire to the BLACK or WHITE house wires may cause metal parts of the fixture to carry electrical currents. Under this condition anyone coming in contact with the fixture will receive electrical shock, which could cause serious injury or death.
- DO NOT damage or cut the wire insulation (covering) during installation of fixture. DO NOT permit wires to contact any surface having a sharp edge. To do so may damage or cut the wire insulation, which could cause serious injury or death from electrical shock.

### WARNING

- All electrical connections must be in agreement with local codes and ordinances, the National Electric Code (NEC) and ANSI/NFPA 70-1999. Contact your municipal building department to learn about your local codes, permits and/or inspections. Risk of fire – most dwellings built before 1985 have supply wire rated for 140 °F. Consult a qualified electrician before installation.
- DO NOT suspend any fixture by the house wires. A fixture must always be mounted directly to a mounting strap which is first attached to the outlet box. Wire connectors will not support the weight of a fixture. Suspending a fixture by the house wires and wire connectors will result in the fixture falling, with the possibility of personal injury and the danger of electrical shock or fire.

## SAFETY INFORMATION

---

### WARNING

- To avoid personal injury, the use of gloves may be necessary while handling fixture parts with sharp edges.
- To reduce the risk of fire, electrical shock, or personal injury, wire connectors provided with this light fixture are designed to accept only one 12-gauge house wire and two lead wires from the light fixture. If your house wire is larger than 12-gauge or there is more than one house wire to connect to the corresponding fixture lead wires, consult an electrician for the proper size wire connectors to use.
- DO NOT use bulb having a wattage greater than the maximum value stated on the fixture. The use of a bulb with higher wattage than specified will increase temperatures and risk of fire.
- When replacing bulb, please allow bulb to cool down before touching.
- If applicable, always unplug this product before replacing bulb.
- To reduce the risk of electric shock, DO NOT use the product if power cord is frayed or broken.
- To reduce the risk of damage to the fixture, DO NOT use power tools to assemble any part of the fixture.
- THIS PORTABLE LAMP HAS A POLARIZED PLUG (ONE BLADE IS WIDER THAN THE OTHER) AS A SAFETY FEATURE TO REDUCE THE RISK OF ELECTRIC SHOCK. THIS PLUG WILL FIT IN A POLARIZED OUTLET ONLY ONE WAY. IF IT DOES NOT FIT FULLY IN THE OUTLET, REVERSE THE PLUG. IF IT STILL DOES NOT FIT, CONTACT A QUALIFIED ELECTRICIAN. NEVER USE WITH AN EXTENSION CORD UNLESS THE PLUG CAN BE FULLY INSERTED. DO NOT ALTER THE PLUG.

### CAUTION

- TURN OFF ELECTRICITY at main fuse box (or circuit breaker box) before beginning installation by removing the fuse (or switching the circuit breaker off).
- If you are not sure the lighting system has a grounding means, DO NOT attempt to install this fixture. Contact a qualified, licensed electrician for information regarding the proper grounding methods as required by the local electrical code in your area.
- All fixtures must be mounted to an outlet box that is supported by the building structure.
- If a dimmer control switch is used with this fixture, obtain professional advice to determine the correct type to use as well as the electrical rating required.

## PREPARATION

---

Before beginning assembly of product, make sure all parts are present. Compare parts with package contents list and hardware contents list. If any part is missing or damaged, do not attempt to assemble the product.

### **Estimated Assembly Time: 30 minutes**

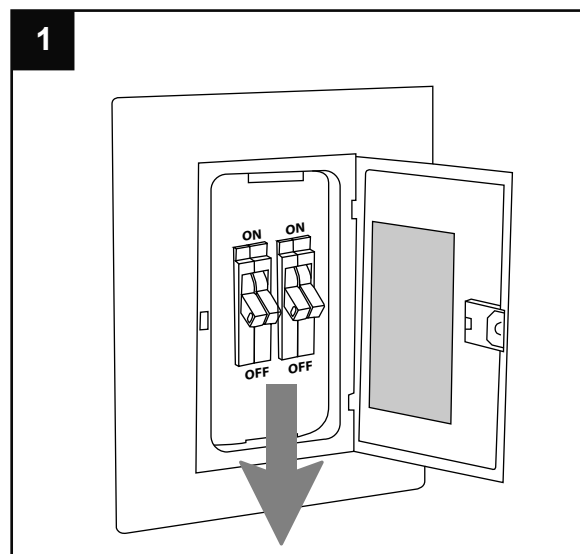
Tools Required for Assembly (not included): Flathead Screwdriver, Phillips Screwdriver, Wire Strippers, Pliers, Wire Cutters, Safety Glasses, Stepladder, Electrical Tape, Silicone Weather Sealant, Level

Helpful Tools (not included): A/C Tester Light, Do-It-Yourself Wiring Handbook, Soft Cloth

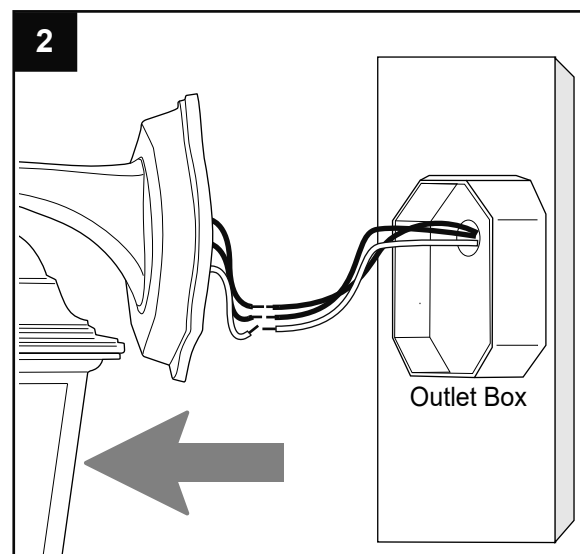
## INITIAL ASSEMBLY INSTRUCTIONS

1. Turn off circuit breakers and wall switch to the fixture supply line leads.

**⚠ DANGER:** Failure to disconnect power supply prior to installation may result in serious injury or death.



2. Remove existing fixture and disconnect all electrical wiring.



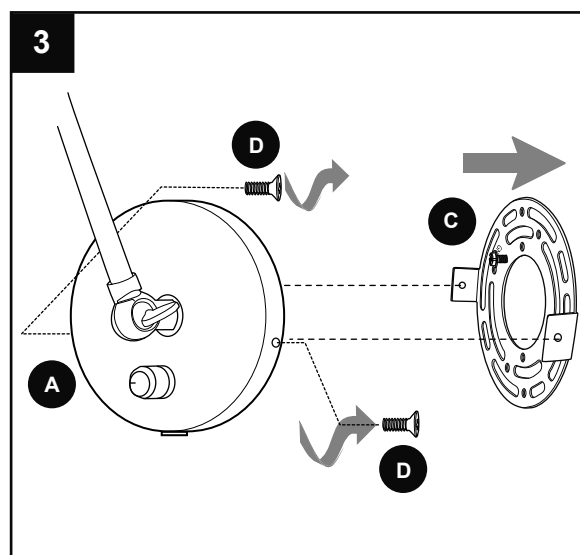
3. Remove two mounting plate screws (D) from fixture (A) and remove mounting plate (C) from back of fixture (A).

Save mounting plate screws (D) for later use.

Choose method for installation, PLUG-IN or HARDWIRE.

For **PLUG-IN ASSEMBLY**, proceed to the following page.

For **HARDWIRE ASSEMBLY**, skip to page 8.




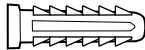
## PLUG-IN ASSEMBLY INSTRUCTIONS

- 1a. Determine the approximate location for the wall scone. Place the back plate (B) against the wall and mark the location of the holes on the back plate (B) using a pencil or a marker (not included). Set back plate (B) aside.

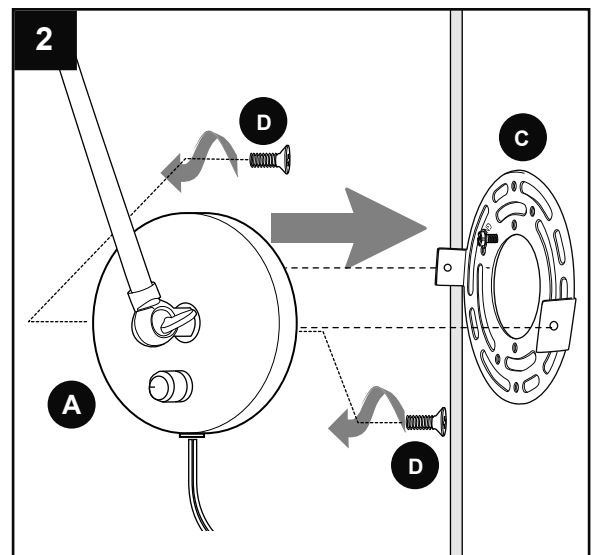
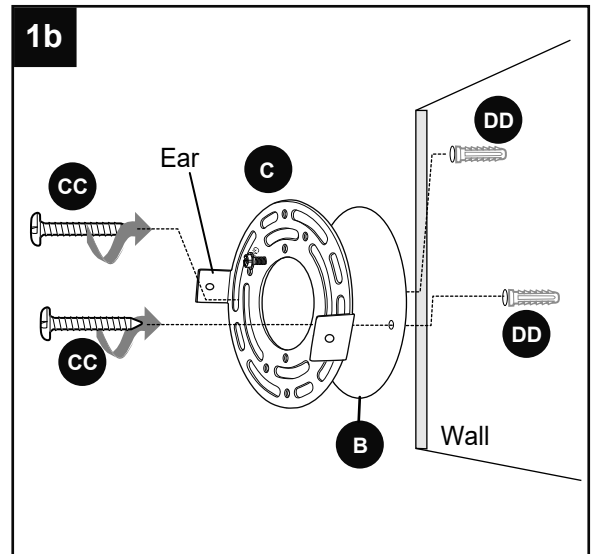
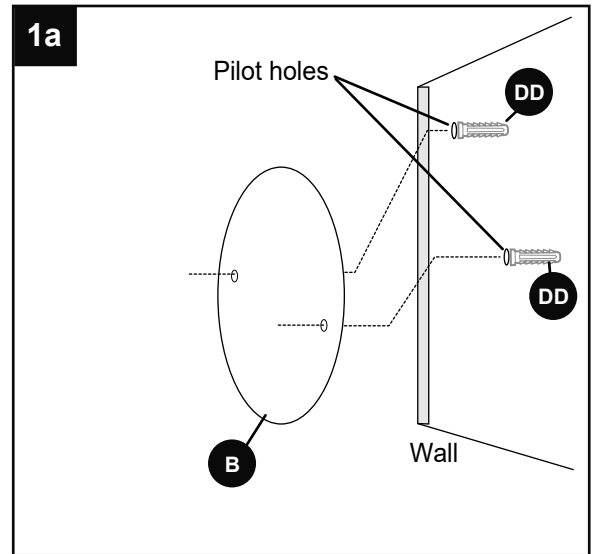
Then, using a 1/8 in. drill bit (not included), drill two pilot holes at the marked locations. Gently tap wall anchors (DD) into holes with a hammer (not included) until flush with wall surface.

- 1b. Use a level (not included) to adjust ears on mounting plate (C) parallel with floor and ceiling as needed. Secure back plate (B) and mounting plate (C) to wall with wall anchor screws (CC).

### Hardware Used

<b>CC</b>	Wall Anchor Screw		x 2
<b>DD</b>	Wall Anchor		x 2

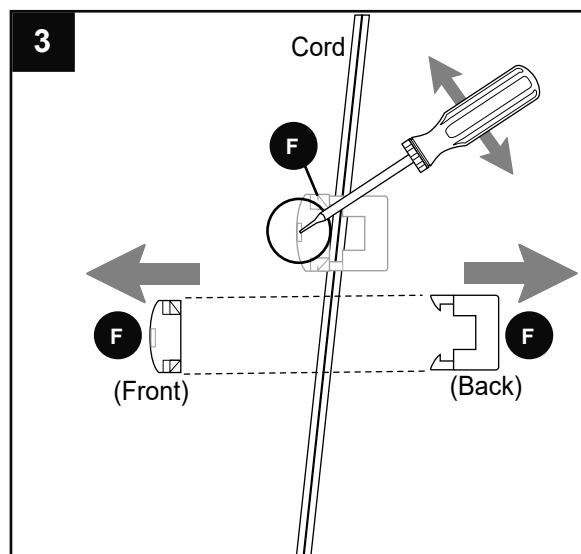
2. Attach fixture (A) to mounting plate (C) using the mounting plate screws (D) previously removed (Step 3, Page 5).



## PLUG-IN ASSEMBLY INSTRUCTIONS

3. Remove cord lock (F) from cord preassembled on fixture (A). Use a flathead screwdriver (not included) and gently push screwdriver into small hole in front part of cord lock (F). Release front and back parts of cord lock (F).

Set aside front and back of cord lock (F) for later use.

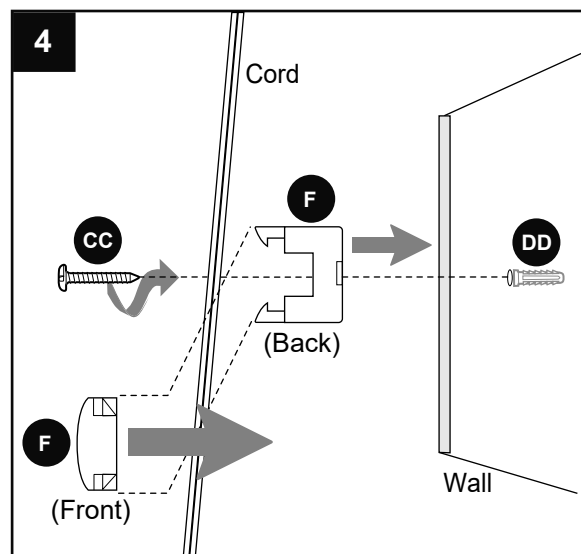


4. Determine the location for the cord lock (F). Place the back part of the cord lock (F) against the wall and mark the location of the screw hole using a pencil or a marker (not included). Set cord lock (F) aside.



Using a 1/8 in. drill bit (not included), drill a pilot hole at the marked location. Gently tap a wall anchor (DD) with a hammer (not included) until flush with wall surface.

Secure back of cord lock (F) to wall with one wall anchor screw (CC). Thread cord through slot in back part of cord lock (F). Replace front of cord lock (F), making sure the tabs close.

Proceed to Step 1 on page 10 (FINAL ASSEMBLY INSTRUCTIONS) to complete installation.



### Hardware Used

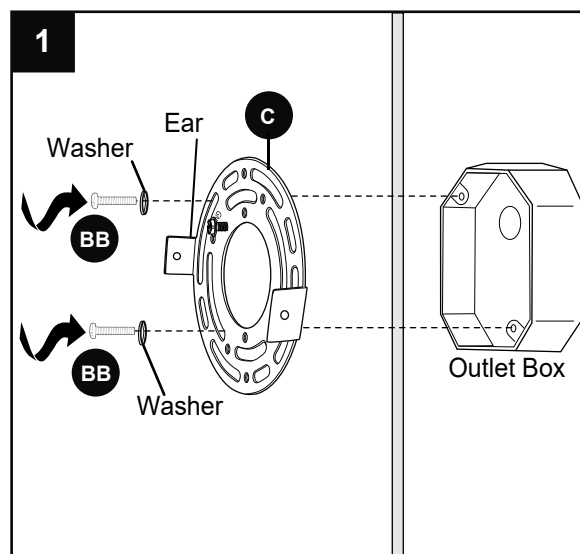
CC	Wall Anchor Screw		x 1
DD	Wall Anchor		x 1

## HARDWIRE ASSEMBLY INSTRUCTIONS

1. Attach mounting plate (C) to outlet box (not included) using existing washers and outlet box screws or the machine screws (BB). Use a level (not included) to adjust ears on mounting plate (C) parallel with floor and ceiling as needed.

**NOTE:** If the outlet box screws required for your outlet box are of a different size than the machine screws (BB), consult a licensed electrician before proceeding. Tighten machine screws (BB) to secure mounting plate (C).

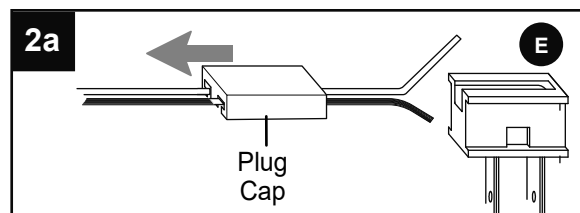
**CAUTION:** The fixture must be mounted to an outlet box that is supported by the building structure and can support the weight of the fixture. Plastic outlet boxes are not recommended.



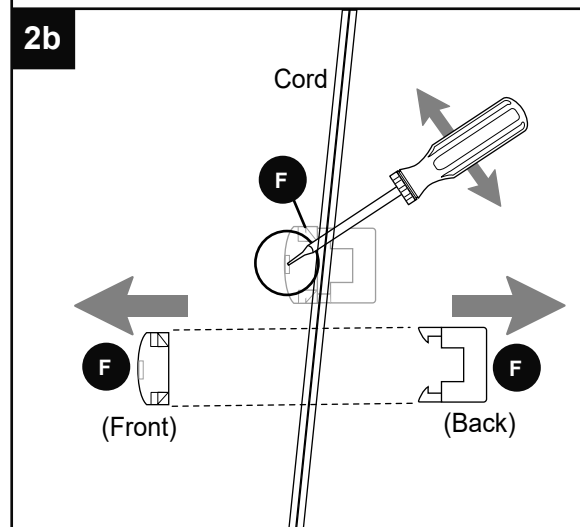
### Hardware Used



- 2a. Slide plug cap to remove plug (E) from cord.



- 2b. Remove cord lock (F) from cord preassembled on fixture (A). Use a flathead screwdriver (not included) and gently push screwdriver into small hole in front part of cord lock (F). Release front and back parts of cord lock (F) and set aside.



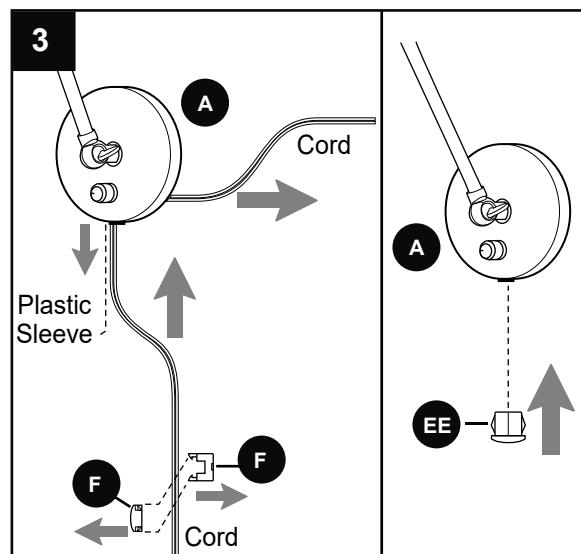


## HARDWIRE ASSEMBLY INSTRUCTIONS

- Pull cord through canopy on fixture (A). After removing cord, remove plastic sleeve preassembled in fixture (A) and then replace with cap (EE).

### Hardware Used

<b>EE</b>	Cap		x 1
-----------	-----	---	-----



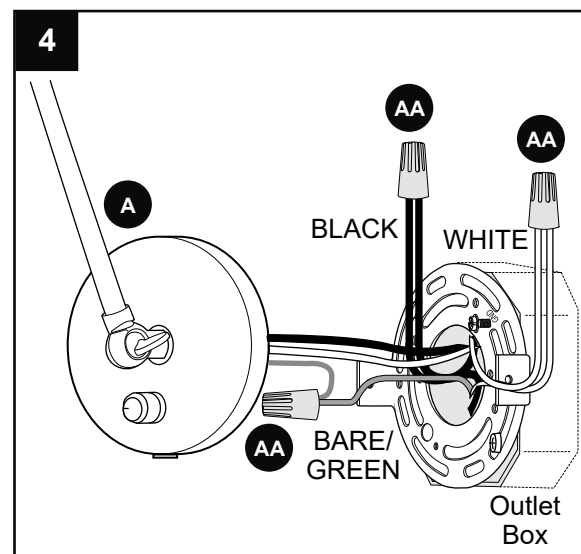
- Unwrap BARE wire from wires on fixture (A) and remove existing wire connectors.

Prepare wire by stripping 3/4 in. of insulation from wire ends using wire strippers (not included). Connect BARE/GREEN ground wire from outlet box to BARE ground wire from fixture (A) with wire connector (AA). Connect WHITE wire from fixture (A) to WHITE wire from outlet box using existing wire connector or wire connector (AA). Connect BLACK wire from fixture (A) to BLACK wire from outlet box using existing wire connector or wire connector (AA).

**NOTE:** Screw wire connectors (AA) on in a clockwise direction.

**⚠ WARNING:** Never connect BARE/GREEN ground wire to WHITE or BLACK power supply wires.

**⚠ WARNING:** To reduce the risk of fire, electrical shock, or personal injury, wire connectors (AA) provided with this light fixture are designed to accept only one 12-gauge house wire and two lead wires from the light fixture. If your house wire is larger than 12-gauge or there is more than one house wire to connect to the corresponding fixture lead wires, consult an electrician for the proper size wire connectors to use.



### Hardware Used

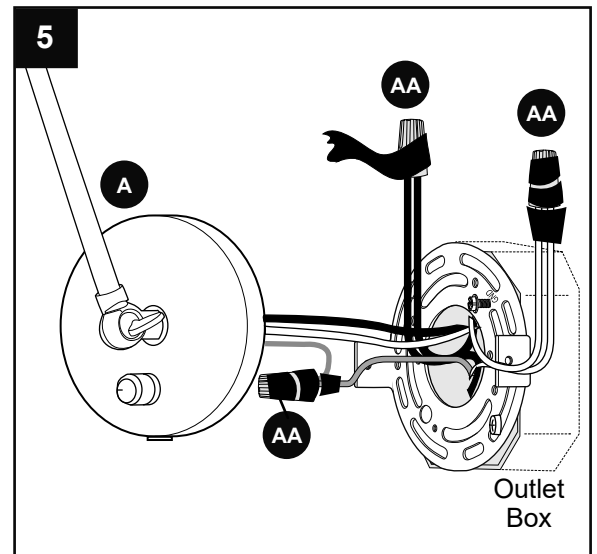
<b>AA</b>	Wire Connector		x 3
-----------	----------------	---	-----

## HARDWIRE ASSEMBLY INSTRUCTIONS

5. Wrap electrical tape (not included) around each individual wire connector (AA) down to the wire.

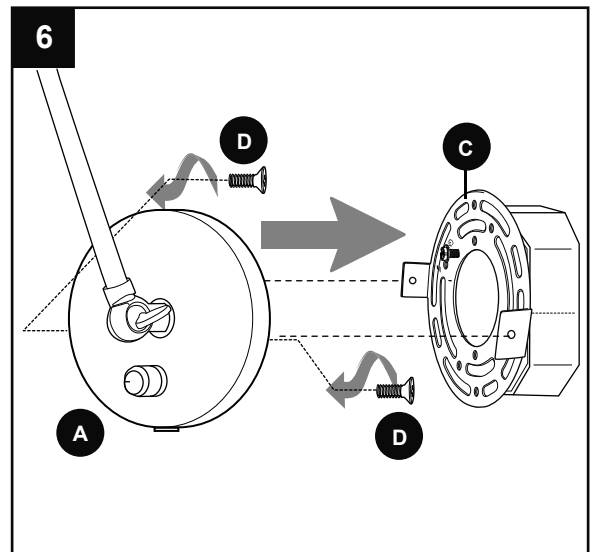
**⚠ WARNING:** Make sure no bare wire or wire strands are visible after making connections.

Push wire connectors (AA) gently back into outlet box. Carefully push excess wiring into outlet box.



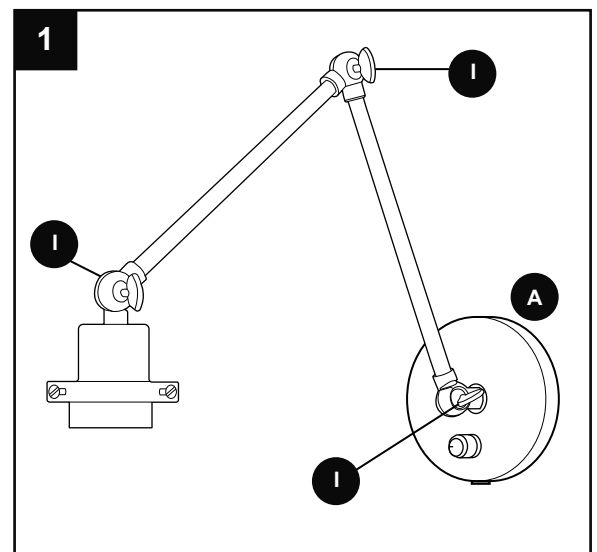
6. Attach fixture (A) to mounting plate (C) using the mounting plate screws (D) previously removed (Step 3, Page 5).

Continue to Step 1 below (FINAL ASSEMBLY INSTRUCTIONS) to complete installation.



## FINAL ASSEMBLY INSTRUCTIONS

1. Secure fixture (A) in desired position by adjusting locks (I) preassembled on fixture (A).

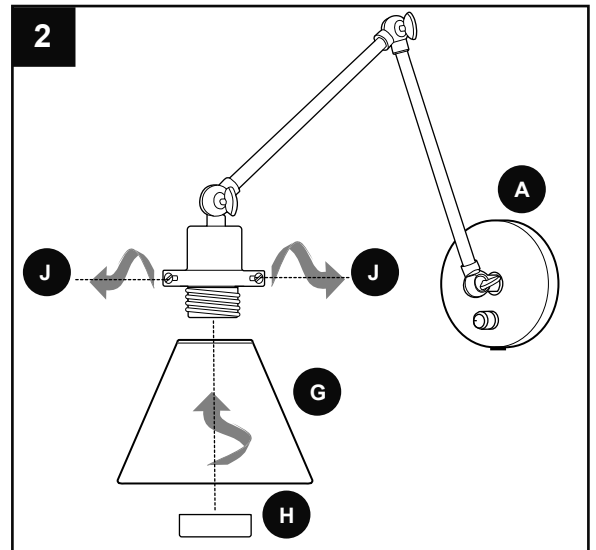


## FINAL ASSEMBLY INSTRUCTIONS

2. Loosen three preassembled shade screws (J) on fixture (A). Remove socket ring (H) from socket on fixture (A).

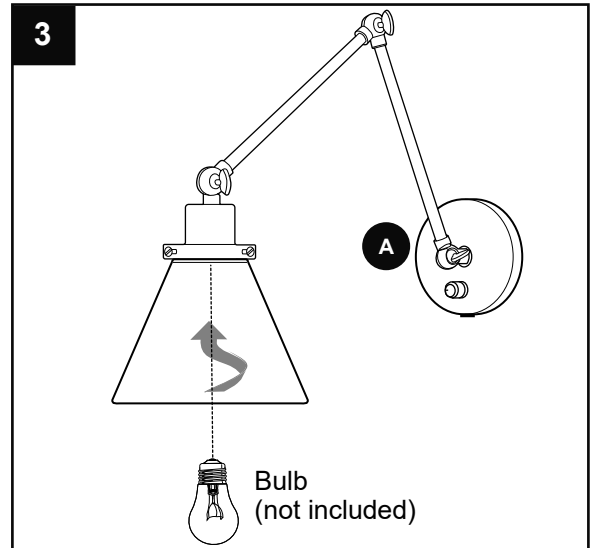
Attach shade (G) by replacing socket ring (H). Tighten shade screws (J) again to secure shade (G) to fixture (A).

**⚠ WARNING:** Do NOT overtighten socket ring and shade screws as shade may crack or break.



3. Install one 60-watt max. standard-base incandescent bulb (not included) or CFL/LED equivalent.

**⚠ WARNING:** When replacing bulb, allow bulb and fixture to cool down before touching.

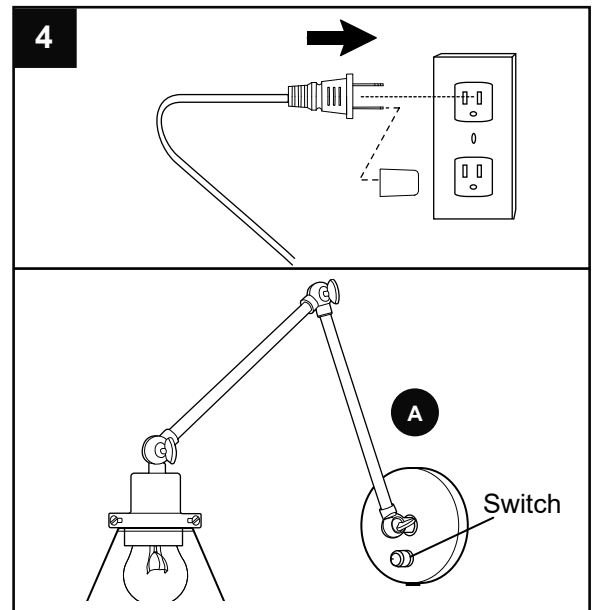


4. For **PLUG-IN ASSEMBLY**, remove preassembled cap from end of power cord before plugging power cord into wall outlet.

For **HARDWIRE ASSEMBLY**, restore power.

Test fixture (A). **NOTE:** Use preassembled switch on fixture (A) to turn lamp ON/OFF.

If light does not function, please refer to TROUBLESHOOTING on the following page.



## CARE AND MAINTENANCE

---

- Shut off main power supply. Wipe fixture with soft, damp cloth. Do not use an abrasive cleaner on fixture.

## TROUBLESHOOTING

---

**⚠ WARNING:** Before beginning work, shut off the power supply to avoid electrical shock.

PROBLEM	POSSIBLE CAUSE	CORRECTIVE ACTION
Bulb will not light.	1. Bulb is burned out. 2. Power is OFF. 3. Faulty connection.	1. Replace light bulb. 2. Make sure power supply is ON. 3. Check wiring and all connections.
Fuse blows out or circuit breaker trips.	1. Crossed wires. 2. Power wire is grounding out.	1. Check wiring. 2. Check all connections.

## WARRANTY

---

The distributor warrants all of its lighting fixtures against defects in materials and workmanship for one (1) year from the date of purchase. If within this period the product is found to be defective, take a copy of the bill of sale as a proof of purchase and the product in its original carton to the place of purchase. The distributor will, at its option, repair, replace or refund the purchase price to the consumer. All costs of installation and removal of the fixture is the responsibility of the consumer. This warranty does not cover fixtures becoming defective due to misuse, accidental damage or improper handling and/or installation and specifically excludes liability for direct, incidental or consequential damages, improper packaging of returned products and acts of God. As some states do not allow exclusions of limitations on an implied warranty, the above exclusion and limitation may not apply. This warranty gives you specific rights and you may also have other rights which may vary from state to state.