



Minwax® PolyShades **STAIN & POLY IN ONE STEP**

FAST & EASY FINISH IN A SINGLE CAN

Brush on. Let dry. Don't wipe!

- PolyShades dries beautifully on its own.

Apply two coats for rich color and sheen.

- For even deeper color, a third coat is fine, too. Always test color on a hidden spot first, because the underlying wood or wood stain will affect the final color.

Use on bare or already-finished wood — without stripping.

- Always start by lightly sanding the surface and making sure it's completely clean.
- When finishing bare wood, start with Minwax Pre-Stain Wood Conditioner, which helps wood accept stain more uniformly for even, blotch-free color.





SAME PRODUCT, DIFFERENT SHEENS

PolyShades is available in both satin and gloss sheens in 14 colors.



SATIN

GLOSS

SATIN

GLOSS

SATIN

GLOSS



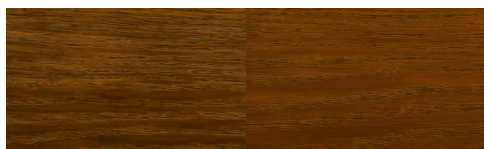
Honey Pine 1187



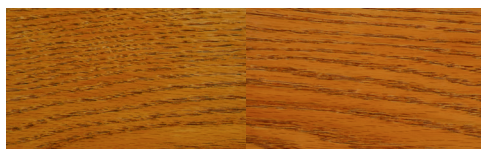
Classic Oak 1191



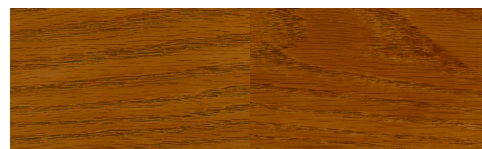
Pecan 1195



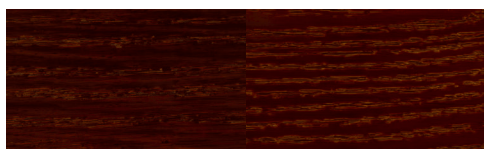
Honey 1184



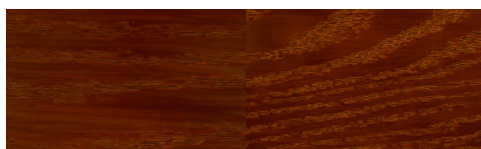
Olde Maple 1182



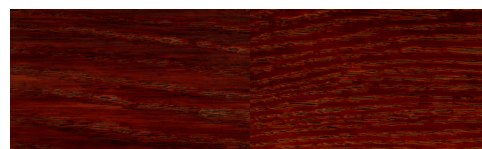
Antique Walnut 1188



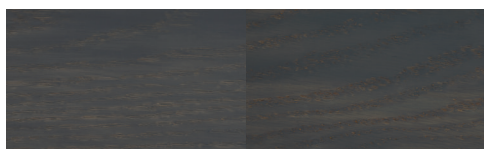
Mission Oak 1193



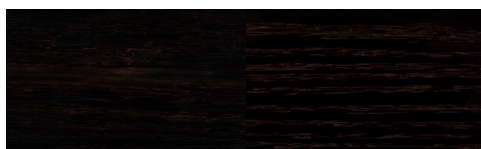
American Chestnut 1194



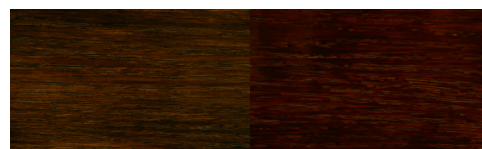
Bombay Mahogany 1192



Aged Barrel 283



Classic Black 1185



Espresso 1186



Vintage Blue 288



Slate 284