

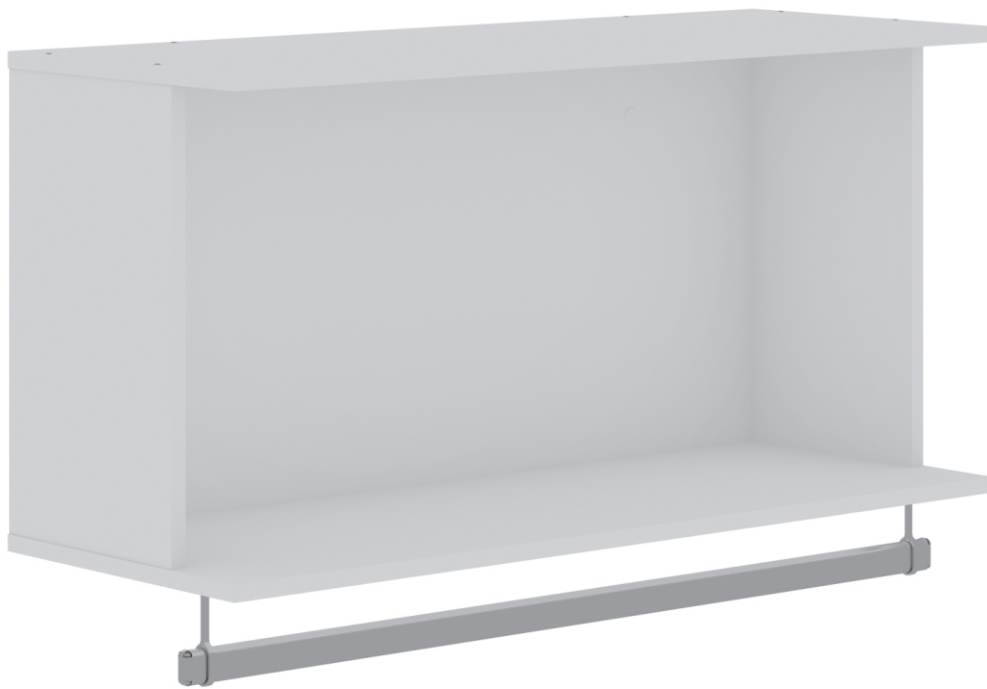


MANHATTAN
COMFORT

888-230-2225

help@manhattancomfort.com

319 Ridge Rd. Dayton, NJ 08810, New Jersey - United States

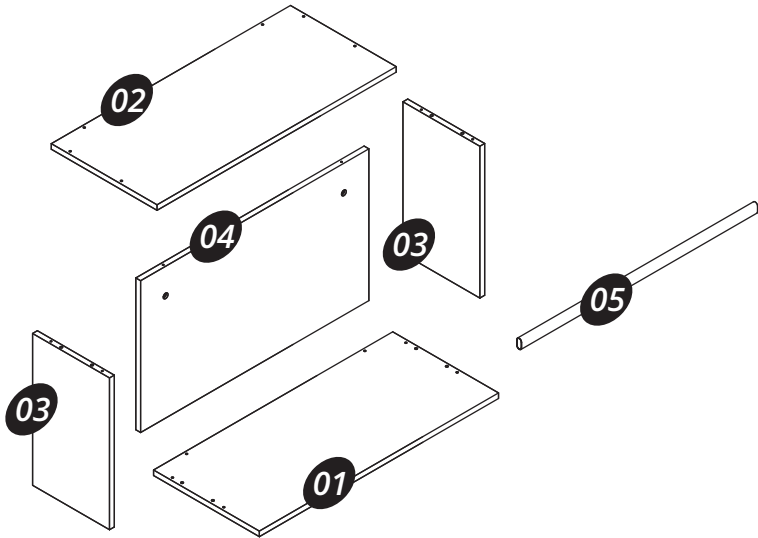


Rockefeller

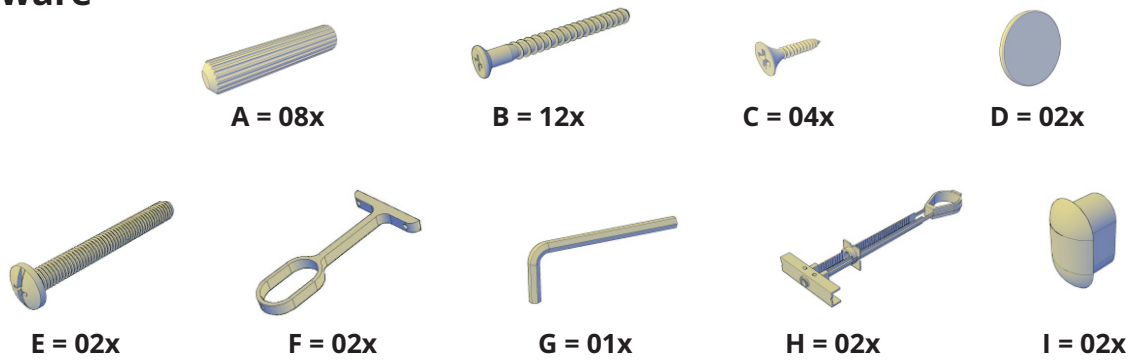
35.24\"/>

Included in the package

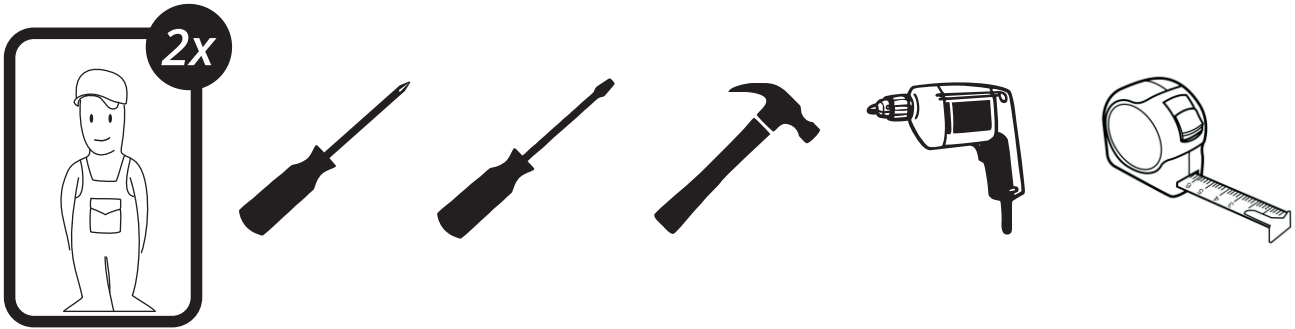
Part	Description	Qty	Box
01	Base	01	01
02	Top	01	01
03	Lateral	02	01
04	Rear Panel	01	01
05	Hanger Bar	01	01

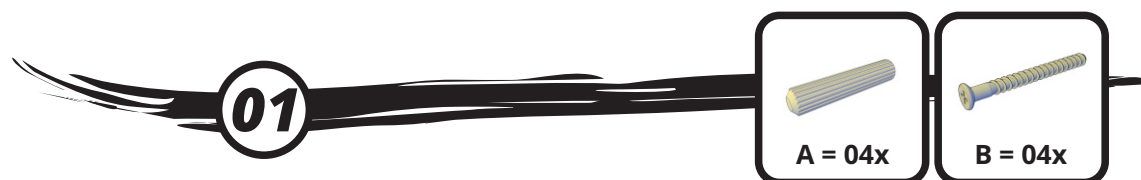
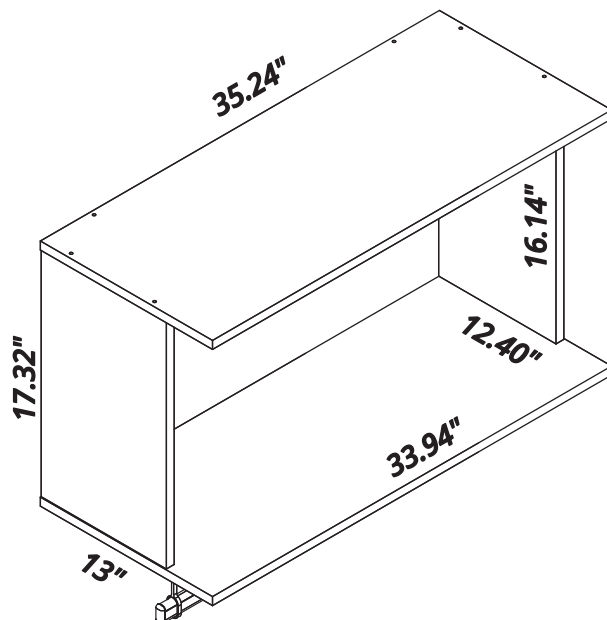
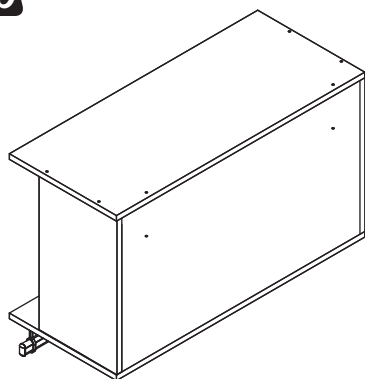
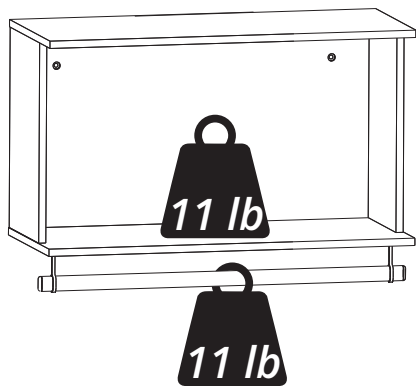


Hardware

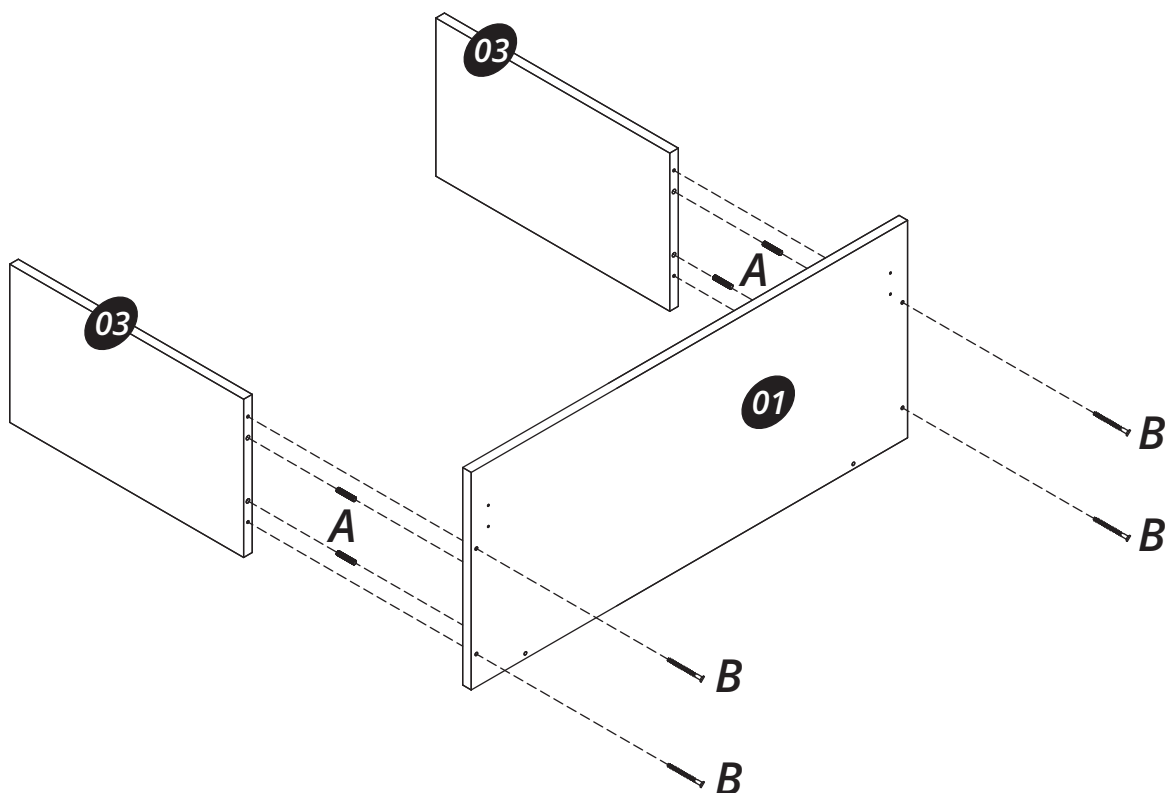


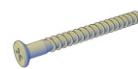
Tools needed (not included)



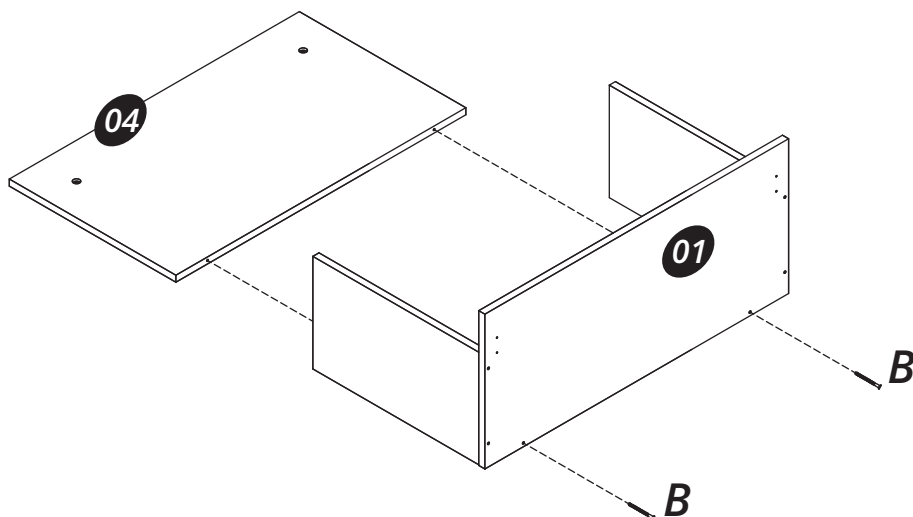
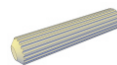
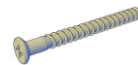


Connect the part (01) onto the parts (03) with the hardware (A + B).

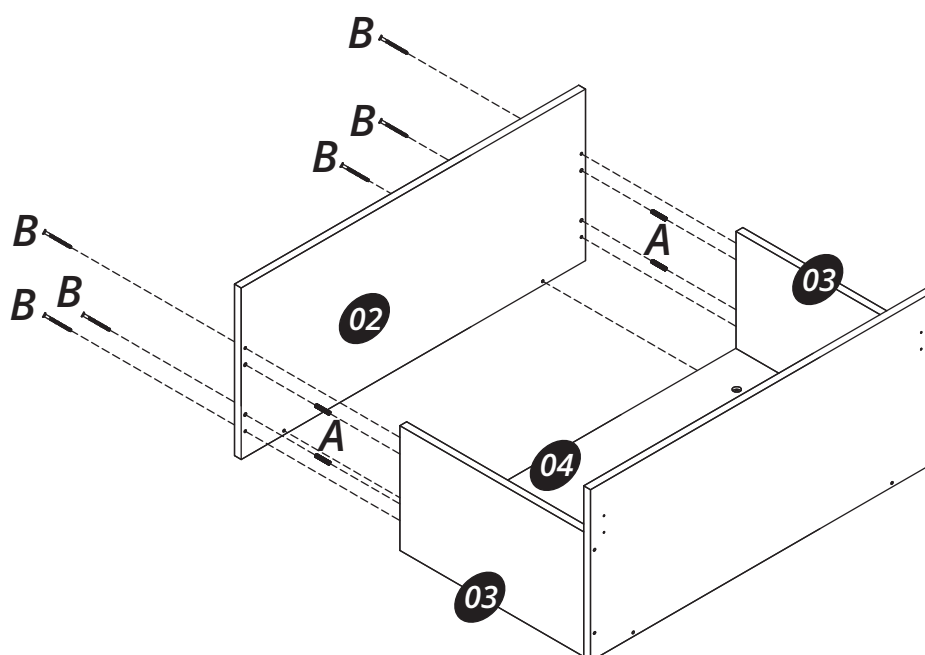


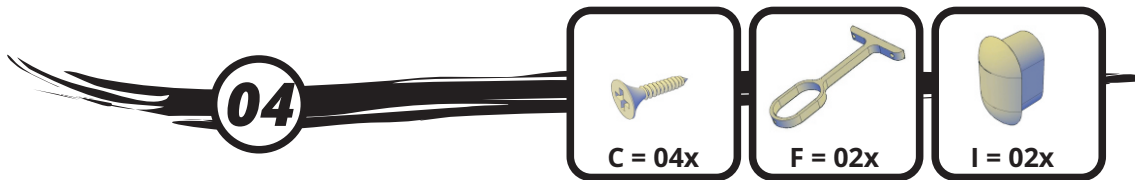
02**B = 02x**

Observe the correct position of the part (04) before connect onto the part (01) with the hardware (B).

**03****A = 04x****B = 06x**

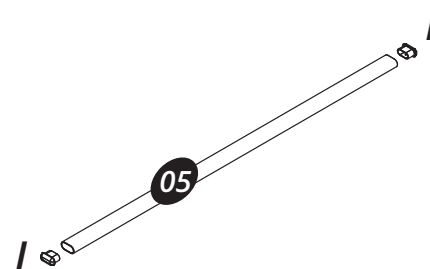
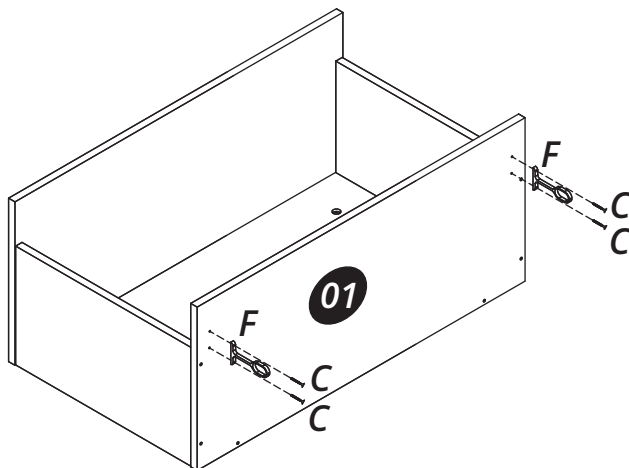
Connect the part (02) onto the parts (03, 04) with the hardware (B) and the hardware (A).



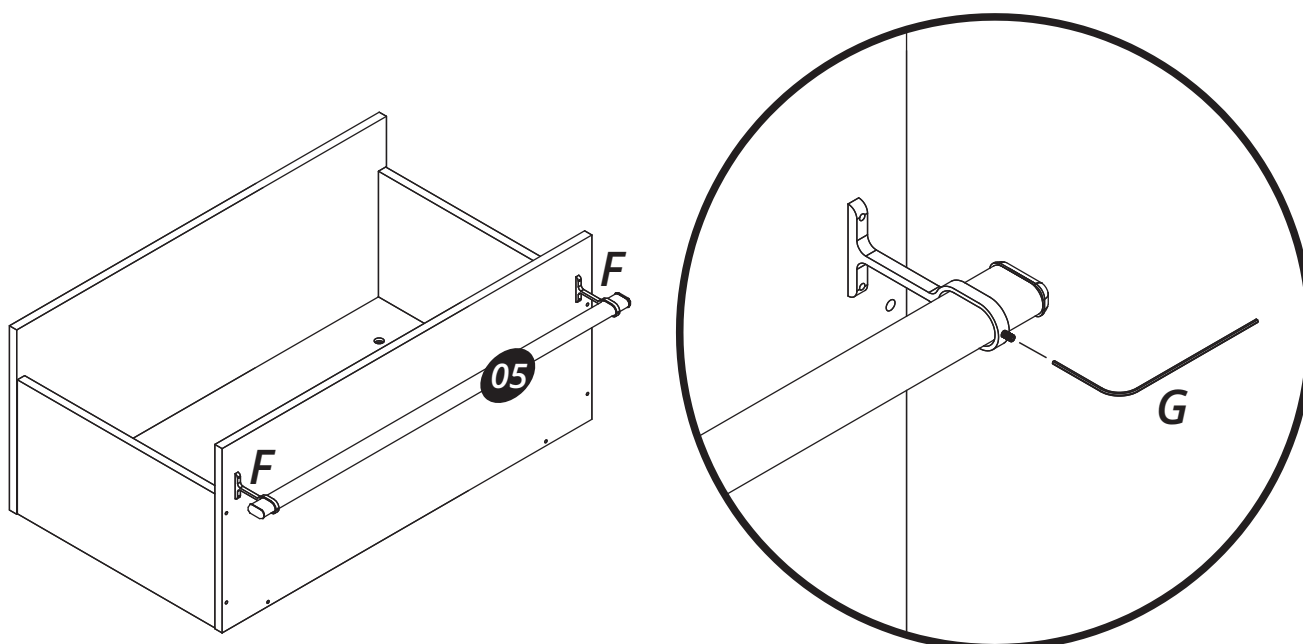


Connect the hardware (F) onto the part (01) using the hardware (C).

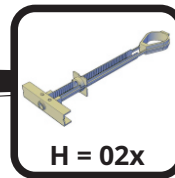
Connect the hardware (I) into the part (05).



Pass the part (05) through the hardware (F) and use the hardware (G) to tight the screw as shown on detail.

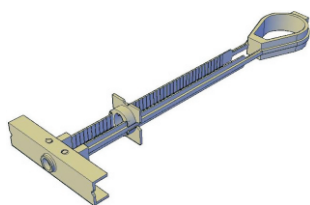
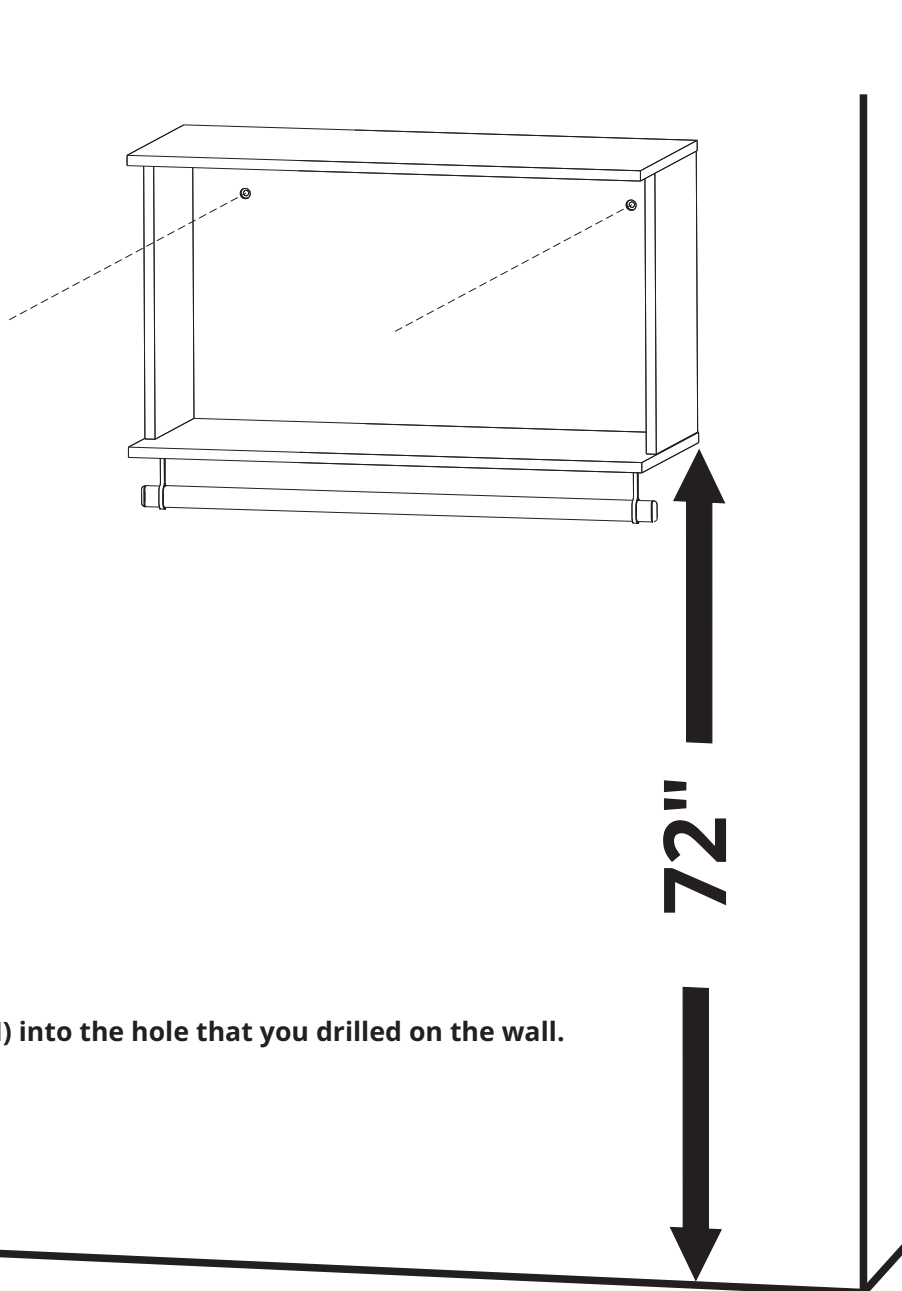


06



Observe the indicated height of the Floating Open Hanging Closet using the floor as reference (around of 72").

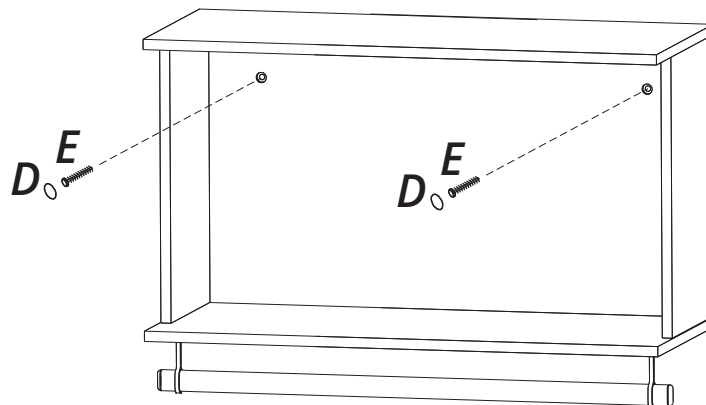
You will need a pencil to mark where you should drill the wall with a 1 /2" drill bit to put in the hardware (H).



You will need apply the hardware (H) into the hole that you drilled on the wall.



Connect the Floating Open Hanging Closet on the wall with the hardware (E + D)





MANHATTAN
COMFORT

888-230-2225

help@manhattancomfort.com

319 Ridge Rd. Dayton, NJ 08810, New Jersey - United States

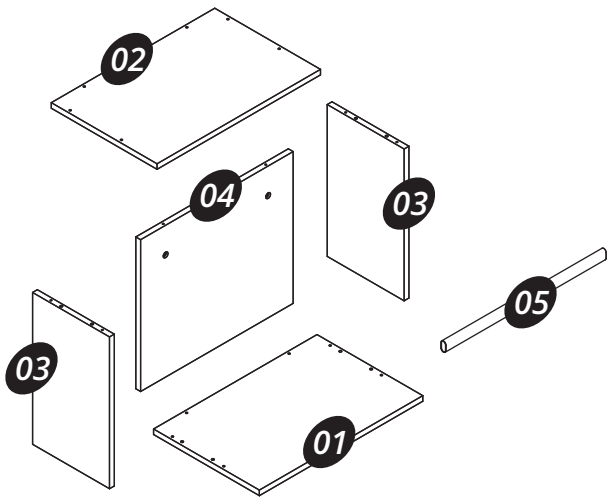


Rockefeller

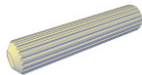
20.08" Floating Open Hanging Closet

Included in the package

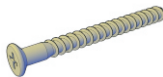
Part	Description	Qty	Box
01	Base	01	01
02	Top	01	01
03	Lateral	02	01
04	Rear Panel	01	01
05	Hanger Bar	01	01



Hardware



A = 08x



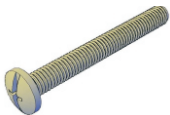
B = 12x



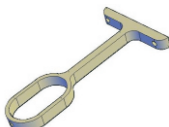
C = 04x



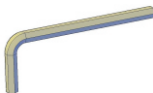
D = 02x



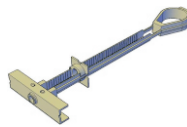
E = 02x



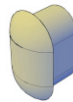
F = 02x



G = 01x

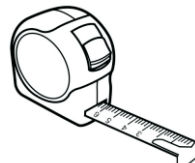
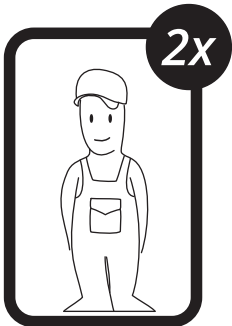


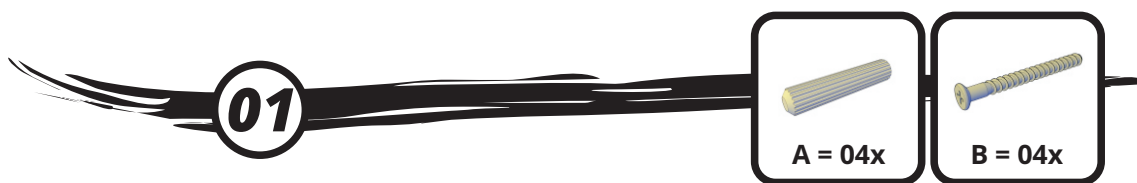
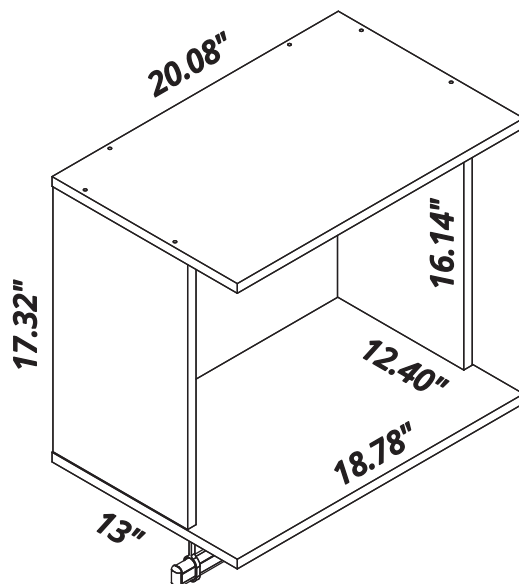
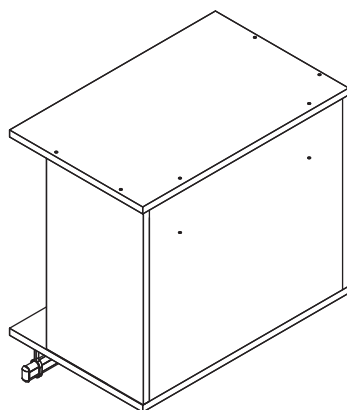
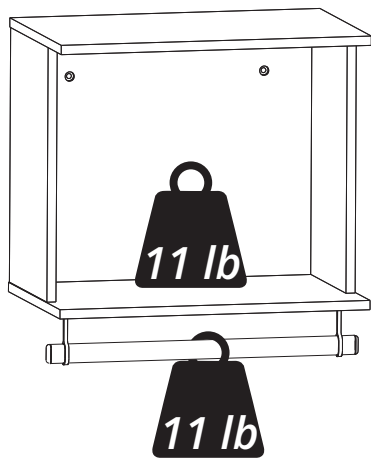
H = 02x



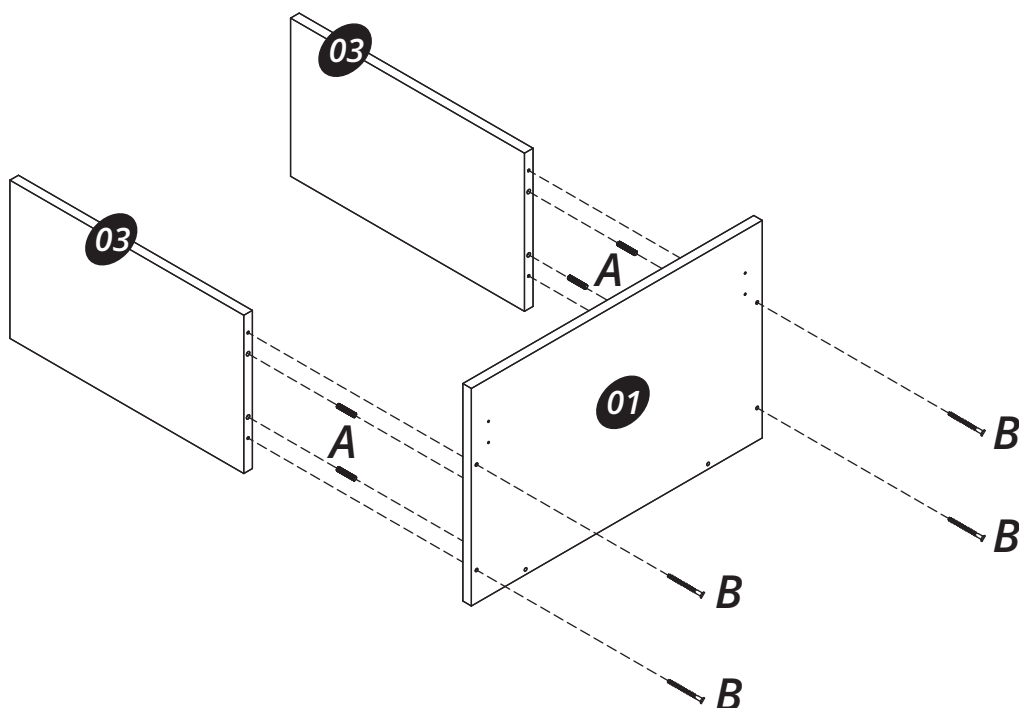
I = 02x

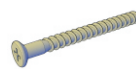
Tools needed (not included)



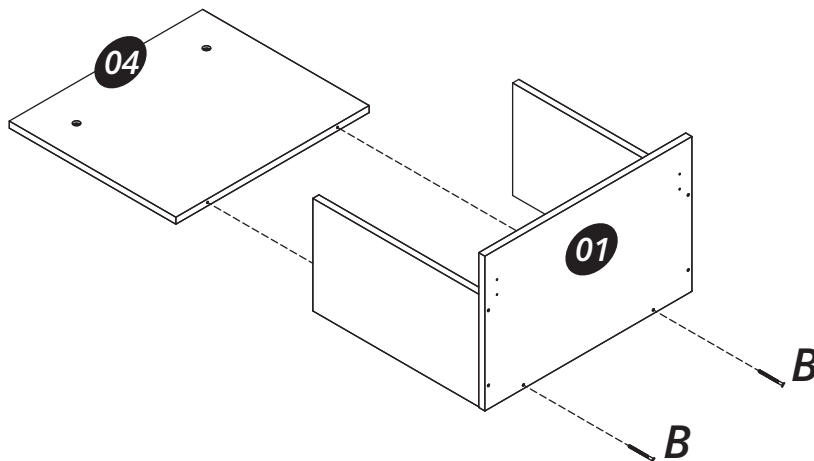
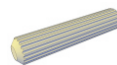
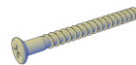


Connect the part (01) onto the parts (03) with the hardware (A + B).

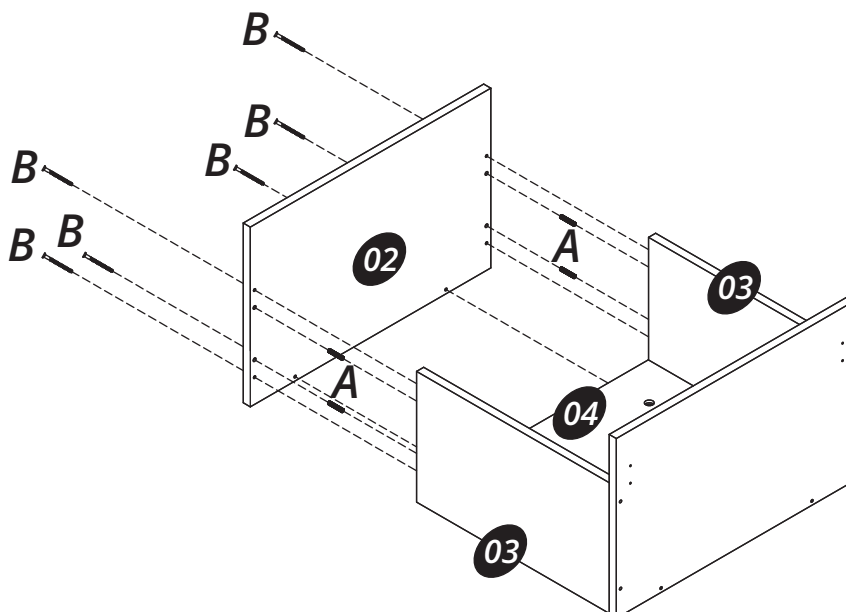


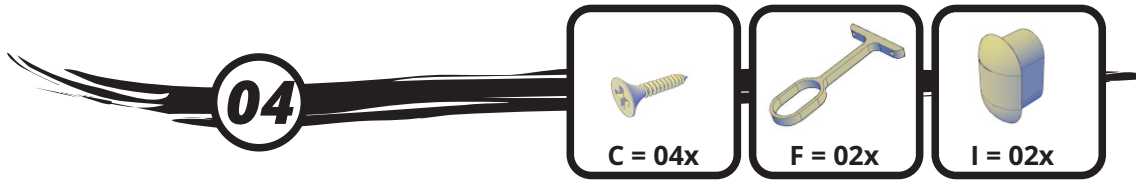
02**B = 02x**

Observe the correct position of the part (04) before connect onto the part (01) with the hardware (B).

**03****A = 04x****B = 06x**

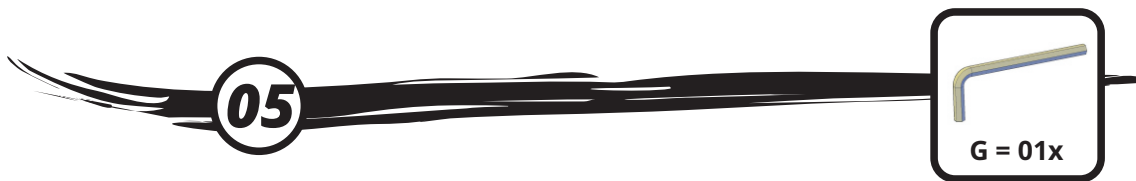
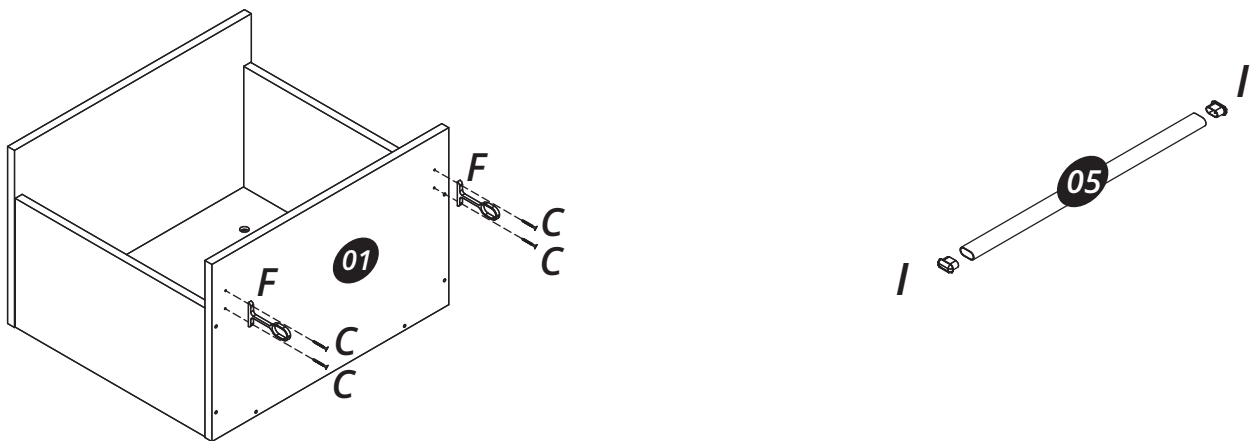
Connect the part (02) onto the parts (03, 04) with the hardware (B) and the hardware (A).



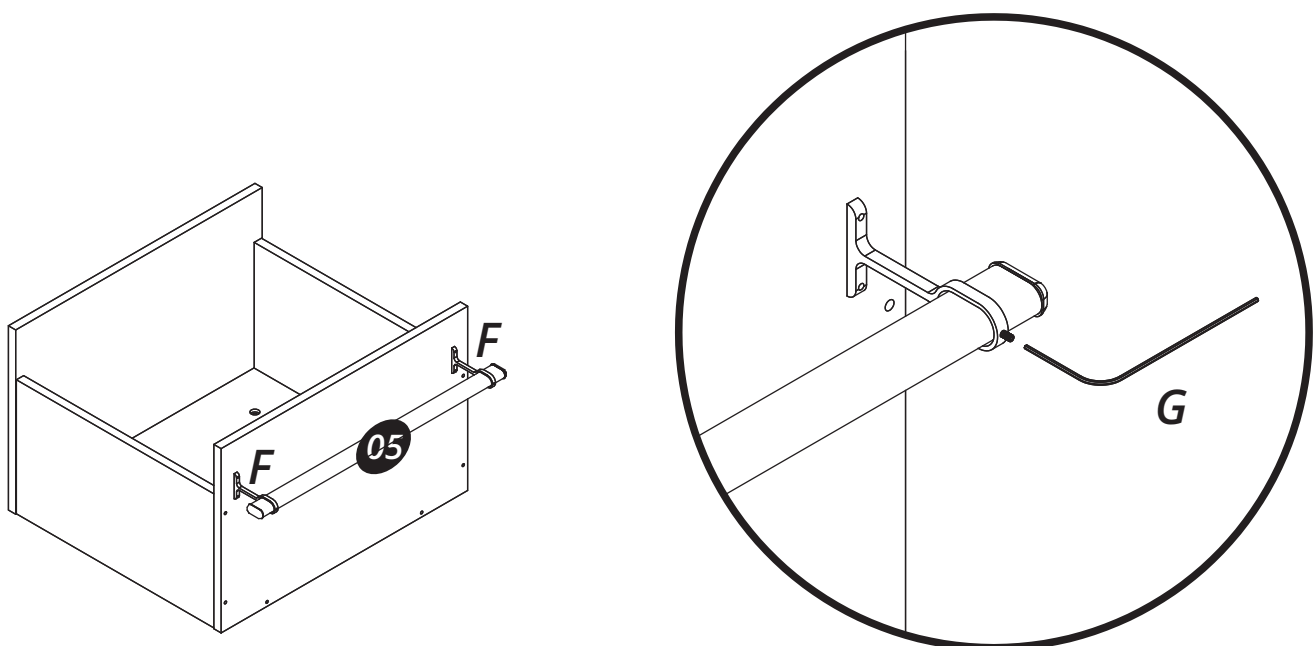


Connect the hardware (F) onto the part (01) using the hardware (C).

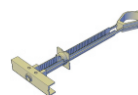
Connect the hardware (I) into the part (05).



Pass the part (05) through the hardware (F) and use the hardware (G) to tight the screw as shown on detail.



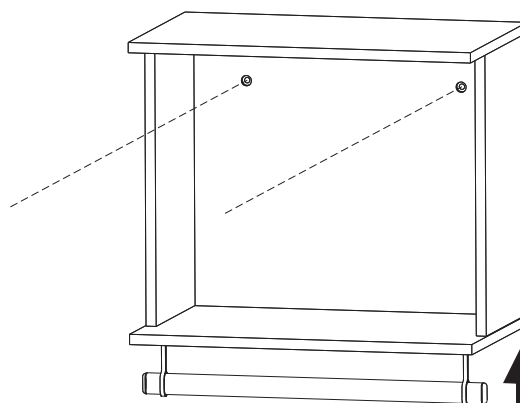
06



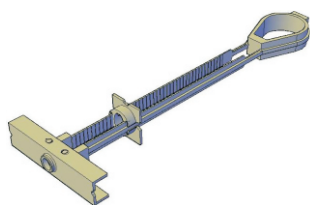
H = 02x

Observe the indicated height of the Floating Open Hanging Closet using the floor as reference (around of 72").

You will need a pencil to mark where you should drill the wall with a 1 /2" drill bit to put in the hardware (H).

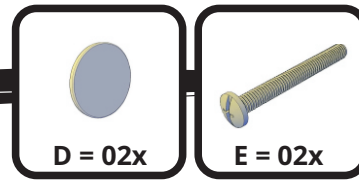


72"

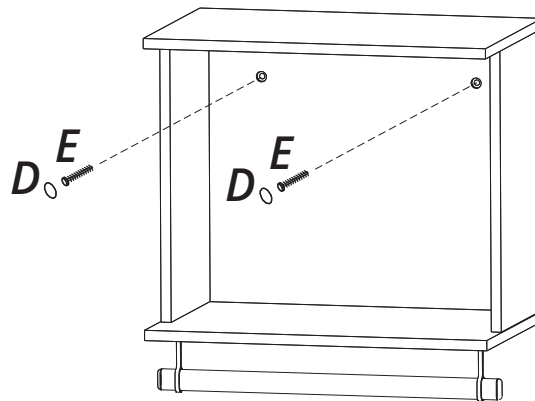


You will need apply the hardware (H) into the hole that you drilled on the wall.

07



Connect the Floating Open Hanging Closet on the wall with the hardware (E + D)





MANHATTAN
COMFORT

888-230-2225

help@manhattancomfort.com



Rockefeller

nightstand 01 drawer

Included in the package

01 - Base = 01 piece

02 - Left side panel = 01 piece

03 - Right side panel = 01 piece

04 - Top panel = 01 piece

05 - Back panel = 01 piece

06 - Front of the drawer = 01 piece

07 - Left side panel of the drawer = 01 piece

08 - Right side panel of the drawer = 01 piece

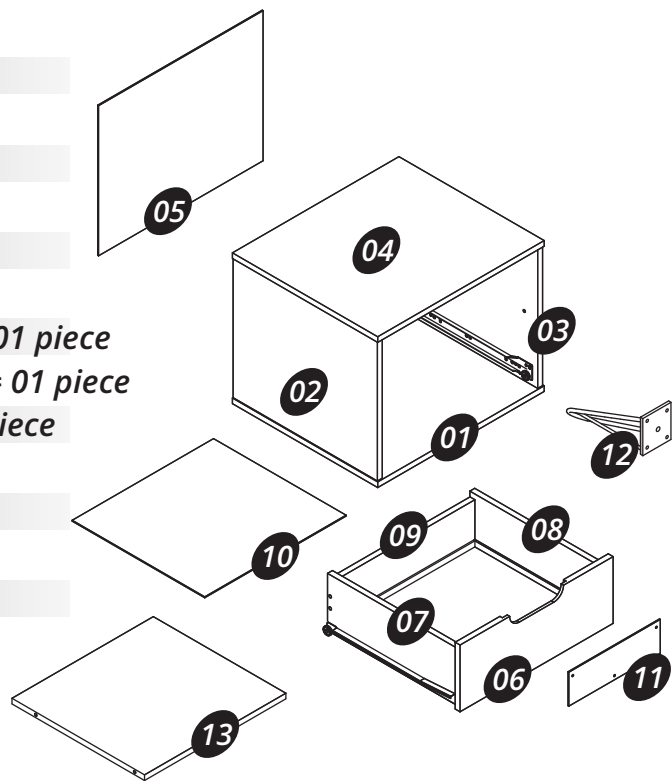
09 - Rear panel of the drawer = 01 piece

10 - Base of the drawer = 01 piece

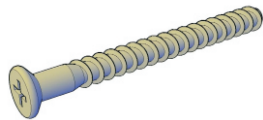
11 - Decorative apply = 01 piece

12 - Feet = 04 pieces

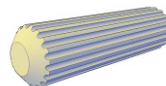
13 - Shelf = 01 piece



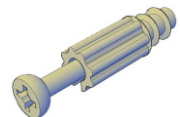
A = 16x



B = 08x



C = 08x



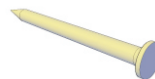
D = 12x



E = 12x



F = 03x



G = 20x



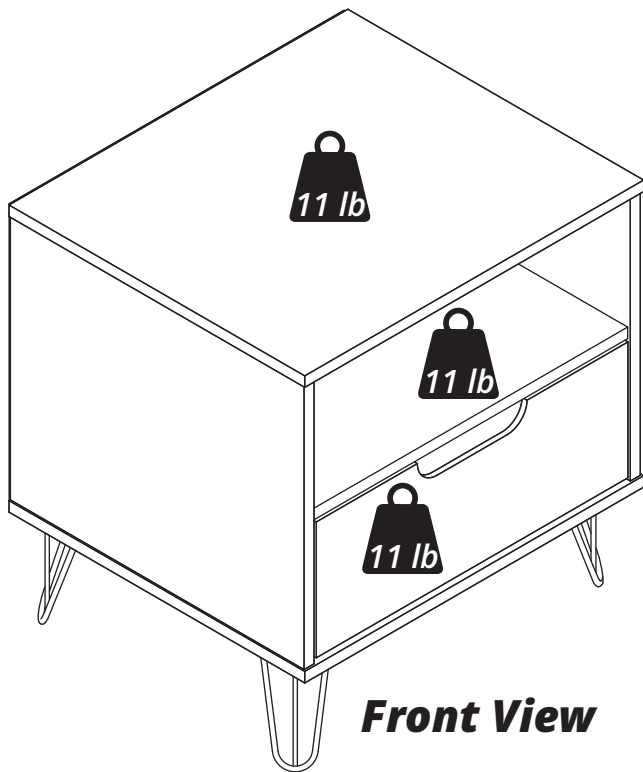
H = 12x

**Tools needed
(not included)**

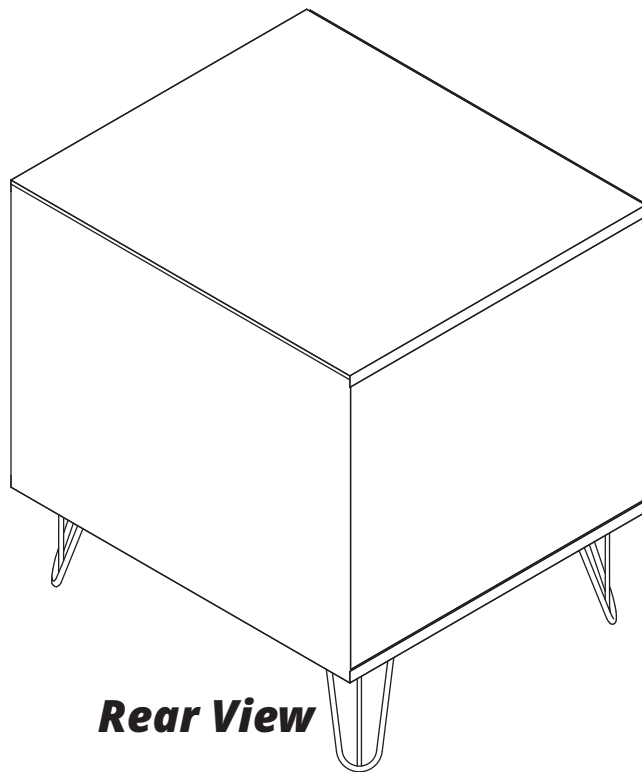


⌘ Phillips screw driver

⌘ Screw driver



Front View

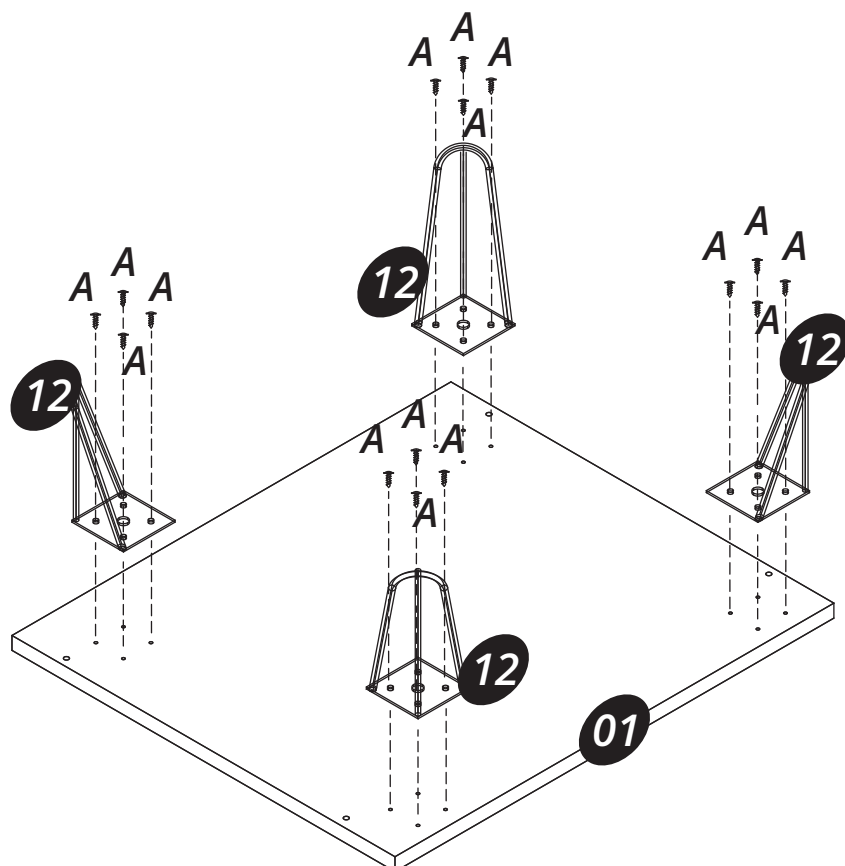


Rear View



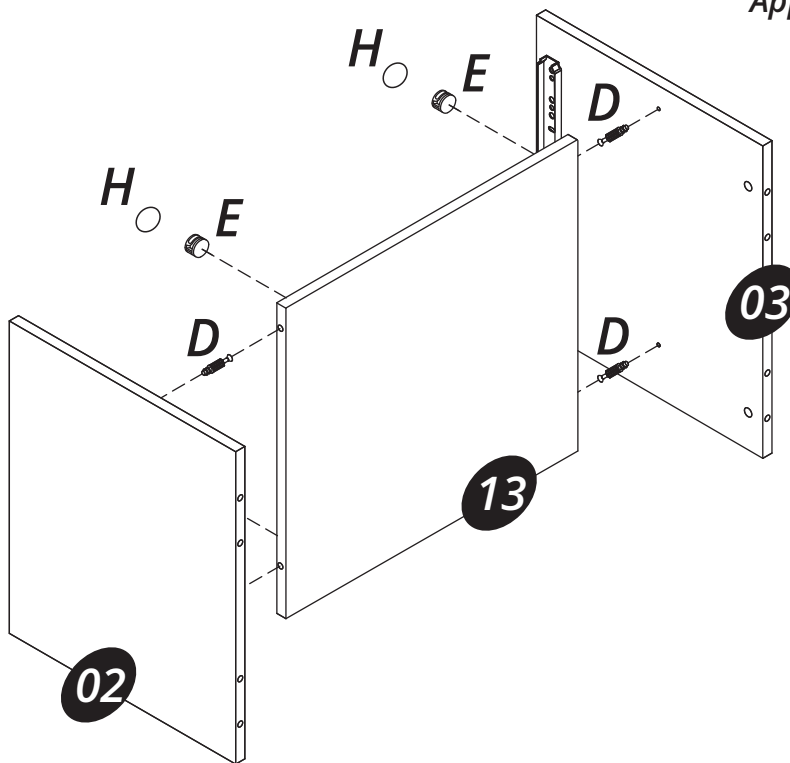
Step 01

Fix the parts (12) under the part (01) with the hardware (A).



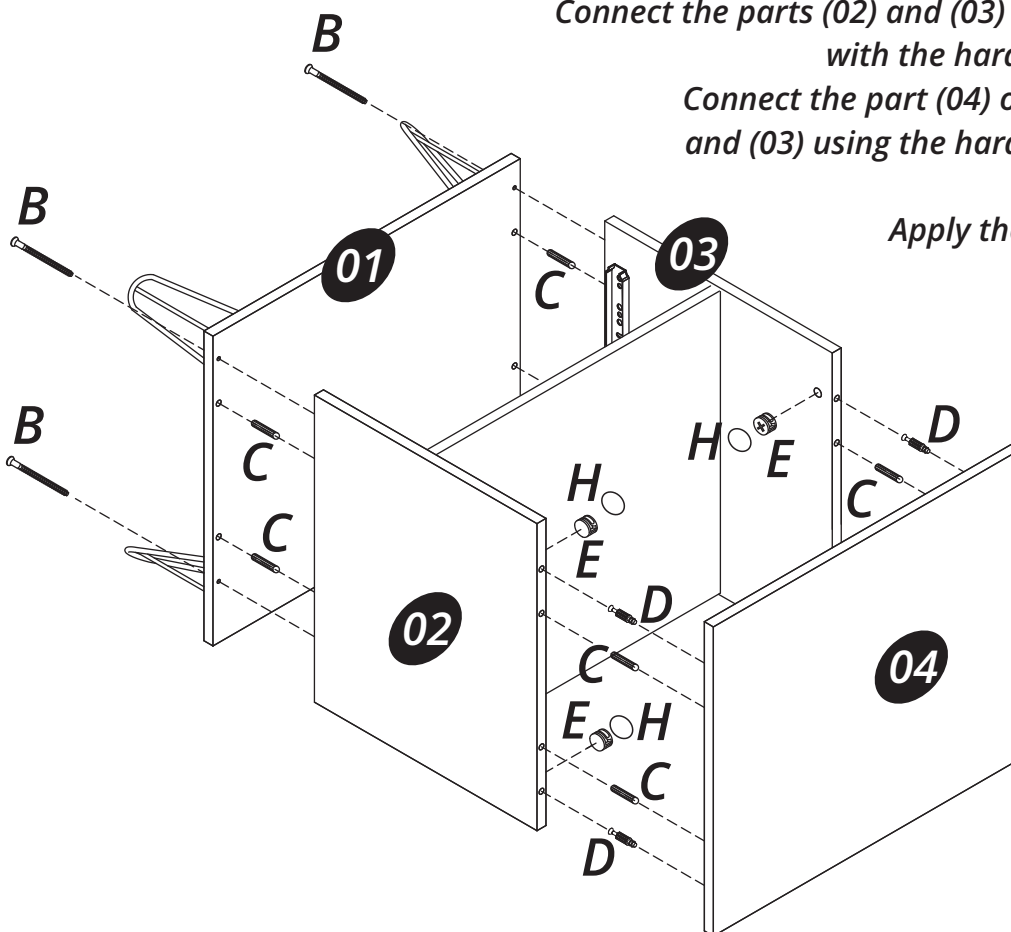
Step 02

Connect the part (13) onto the parts (02) and (03) with the hardware (D + E).
Apply the hardware (H) on the hardware (E).



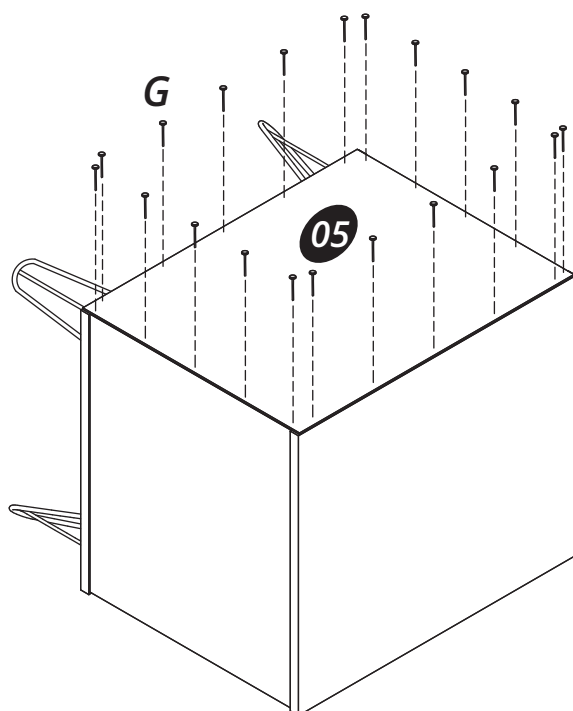
Step 03

Connect the parts (02) and (03) onto the part (01) with the hardware (C) and (B).
Connect the part (04) onto the parts (02) and (03) using the hardware (C) and the hardware (D + E).
Apply the hardware (H) on the hardware (E).



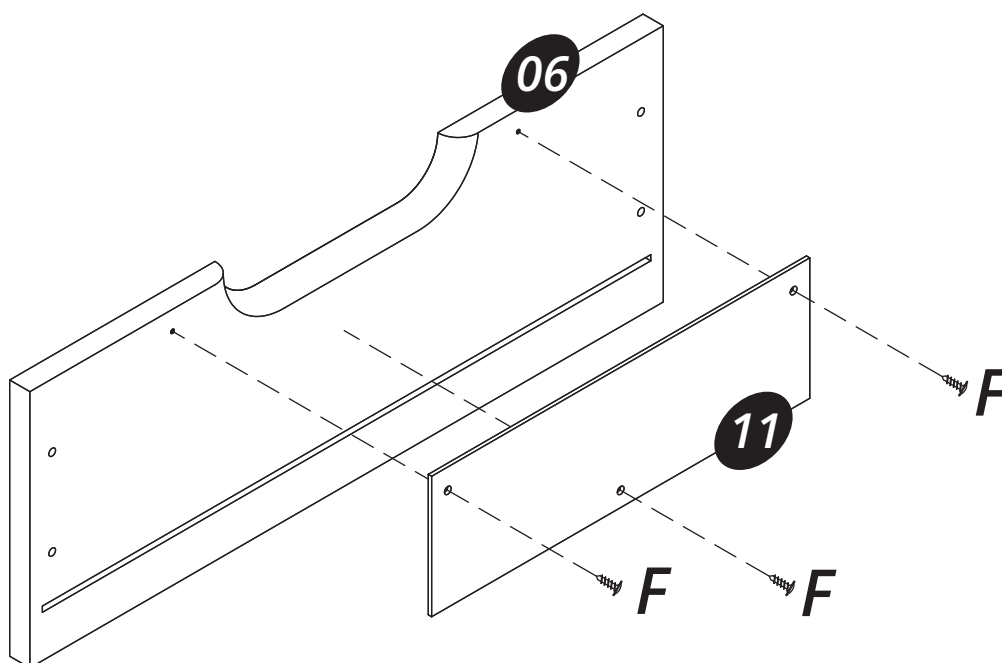
Step 04

Connect the part (05)
with the hardware (G).



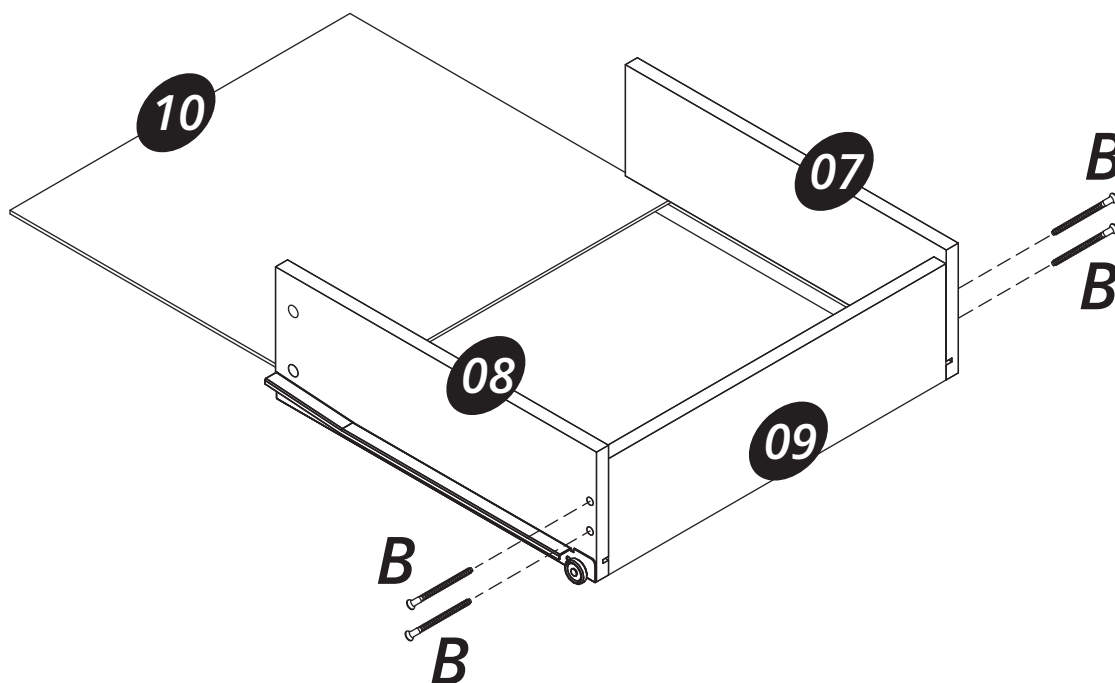
Step 05

Connect the part (11) onto
the part (06) with
the hardware (F).



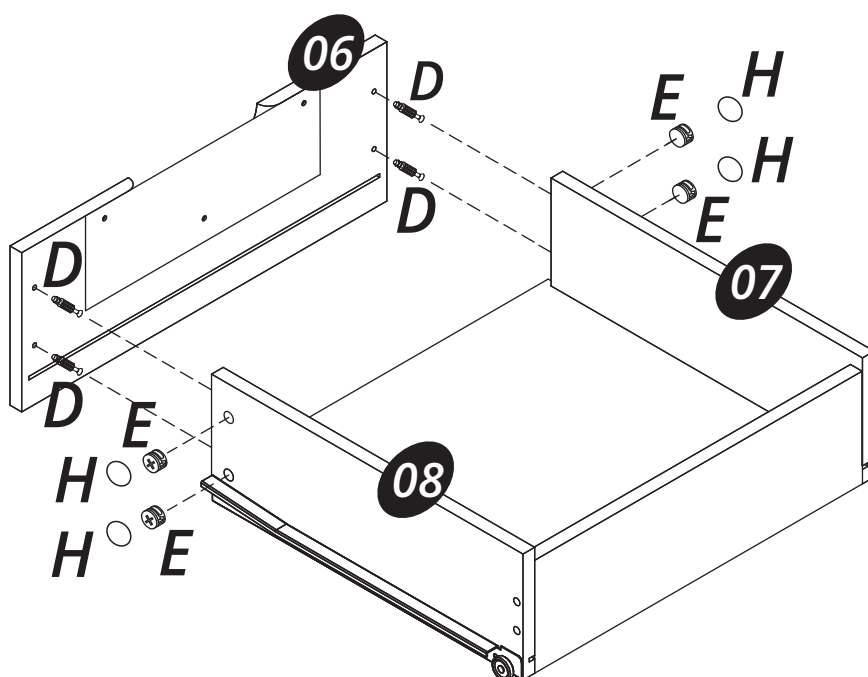
Step 06

Connect the parts (07), (08) and (09) with the hardware (B).
Apply the part (10) in the groove of the
parts (07) and (08) until the groove
of the part (09).



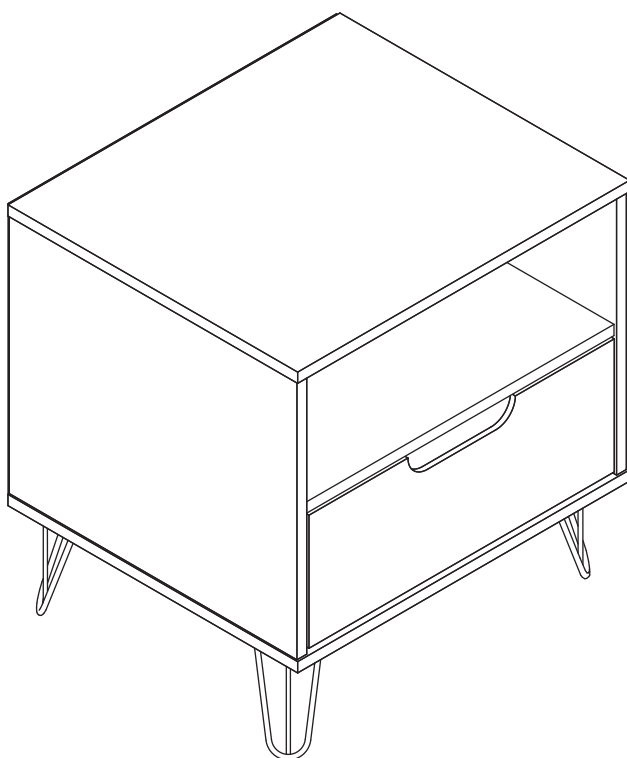
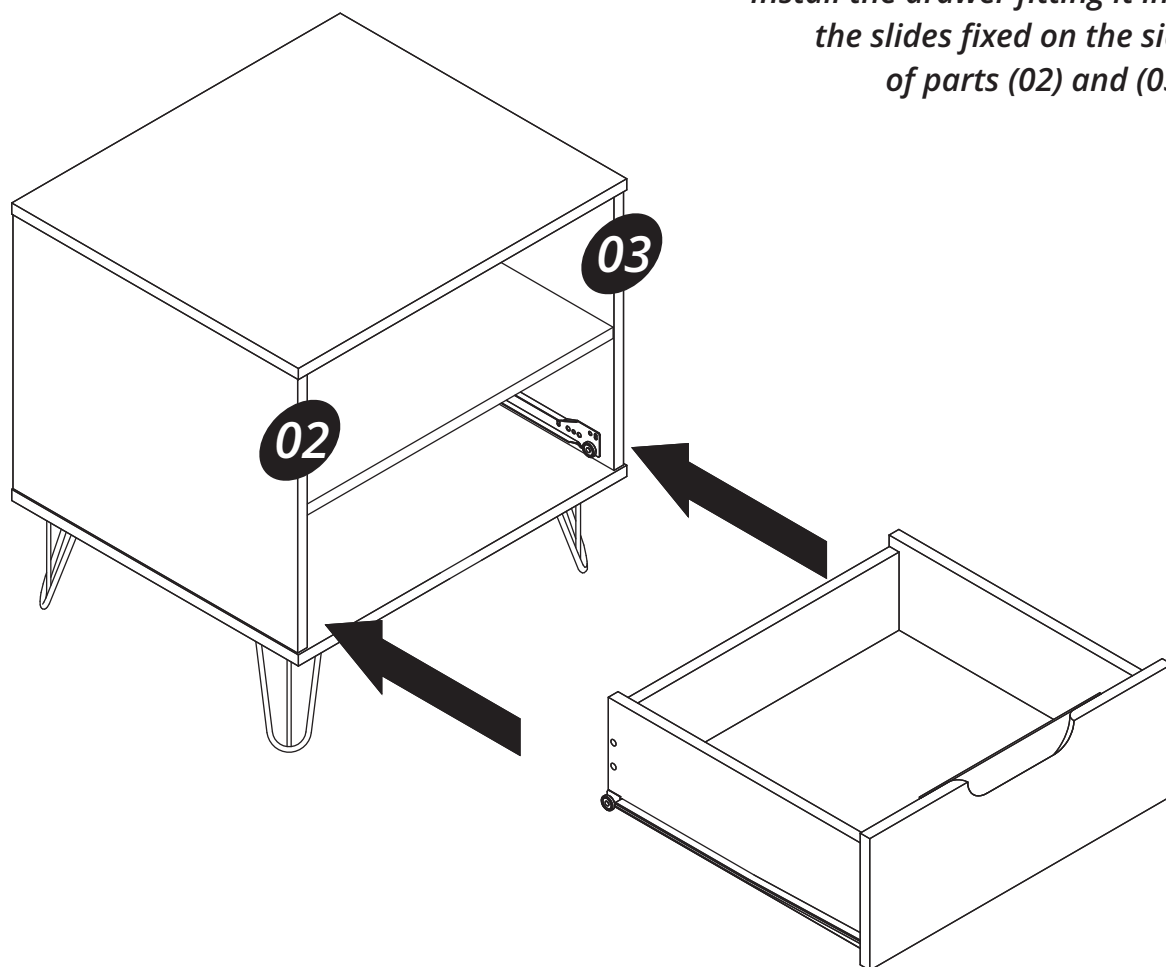
Step 07

Connect the parts (07), (08) and (06)
using the hardware (D + E).
Apply the hardware (H)
on the hardware (E).



Step 08

*Install the drawer fitting it into
the slides fixed on the side
of parts (02) and (03).*





MANHATTAN
COMFORT

888-230-2225

help@manhattancomfort.com



Rockefeller
dresser

Included in the package

01 - Base = 01 piece

02 - Left side panel = 01 piece

03 - Right side panel = 01 piece

04 - Top panel = 01 piece

05 - Lower back panel = 01 piece

06 - Front of the drawer = 03 pieces

07 - Left side panel of the drawer = 03 pieces

08 - Right side panel of the drawer = 03 pieces

09 - Rear panel of the drawer = 03 pieces

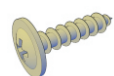
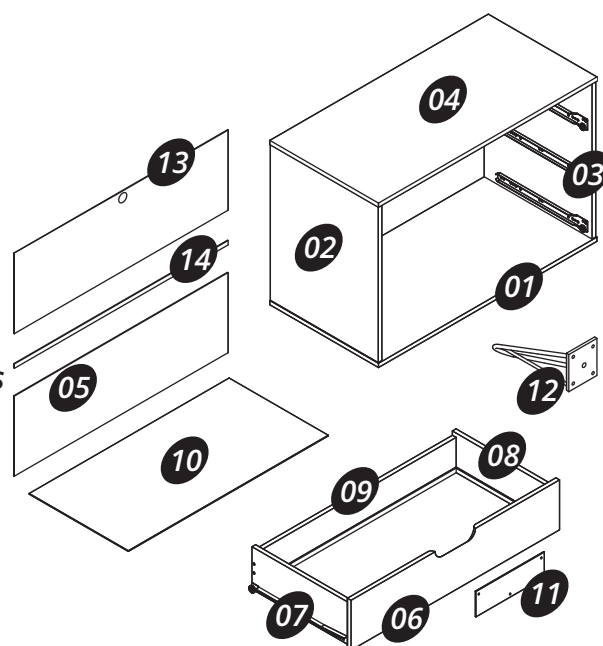
10 - Base of the drawer = 03 pieces

11 - Decorative apply = 03 pieces

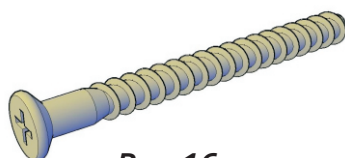
12 - Feet = 04 pieces

13 - Upper back panel (hole) = 01 piece

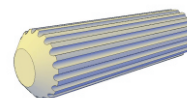
14 - Plastic union profile = 01 piece



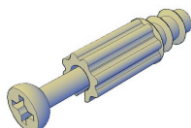
A = 16x



B = 16x



C = 08x



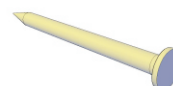
D = 16x



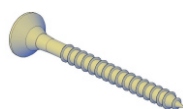
E = 16x



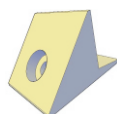
F = 23x



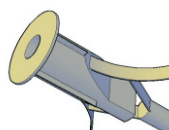
G = 28x



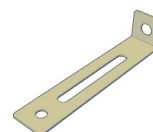
H = 01x



I = 12x



J = 01x



K = 01x



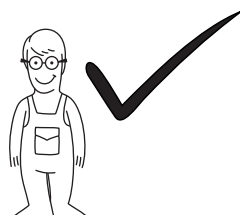
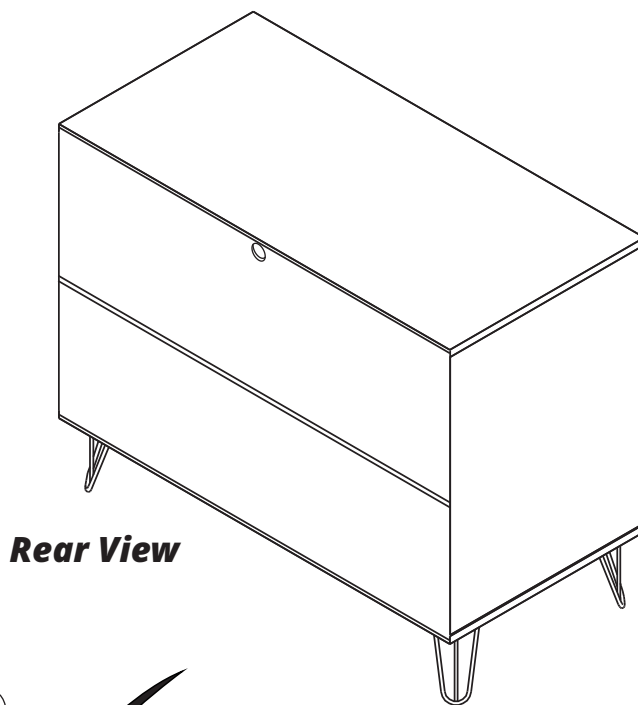
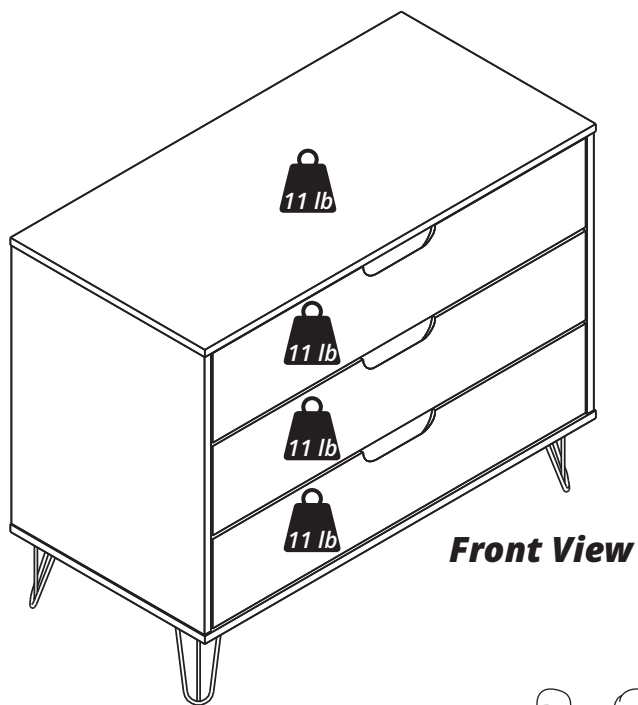
L = 16x

Tools needed
(not included)



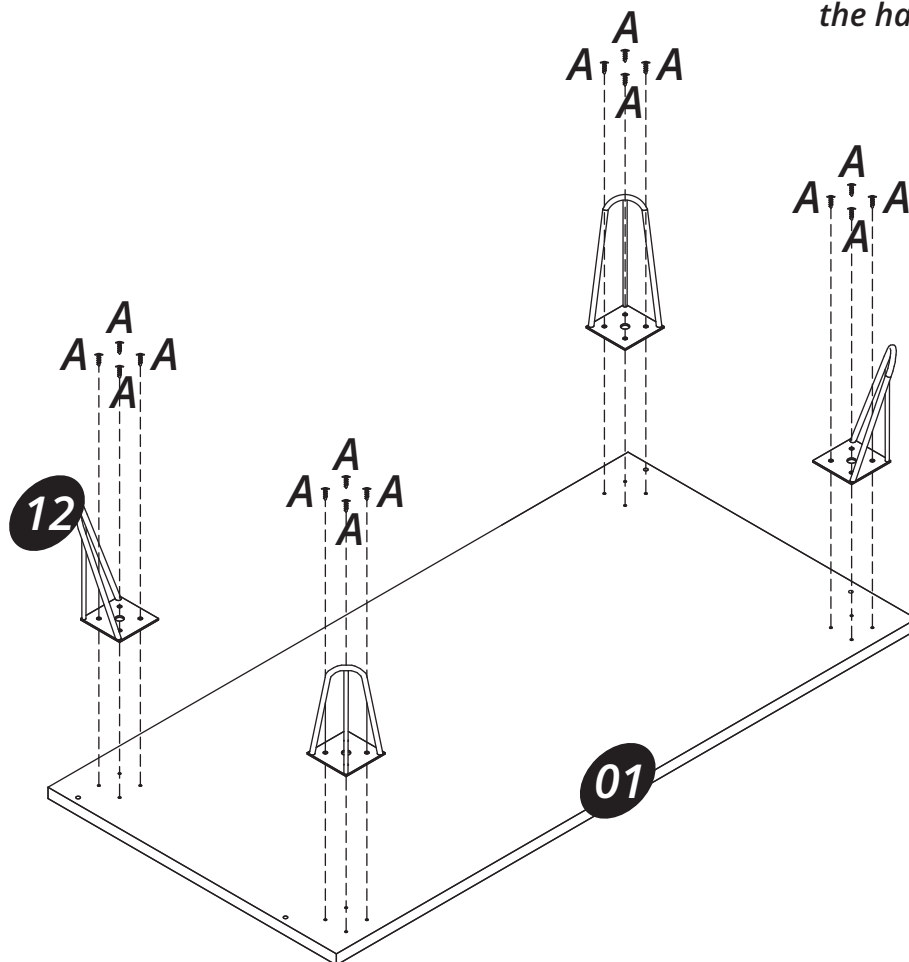
Phillips screw driver

Screw driver



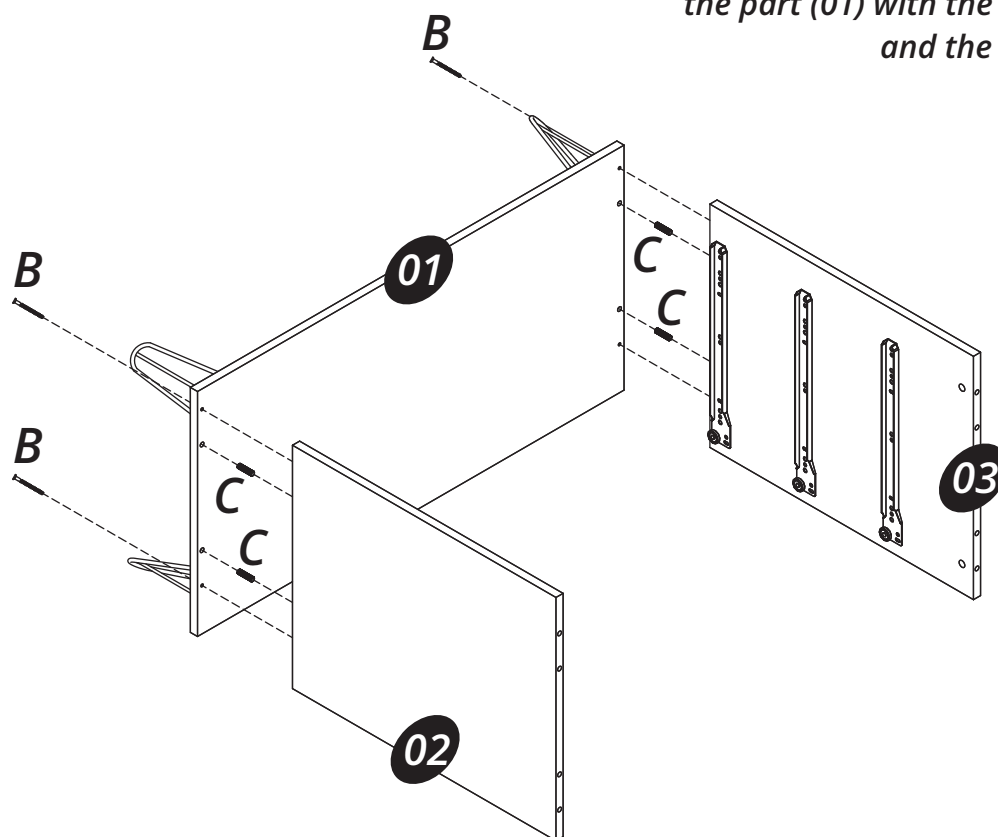
Step 01

Fix the parts (12) under the part (01) with the hardware (A).



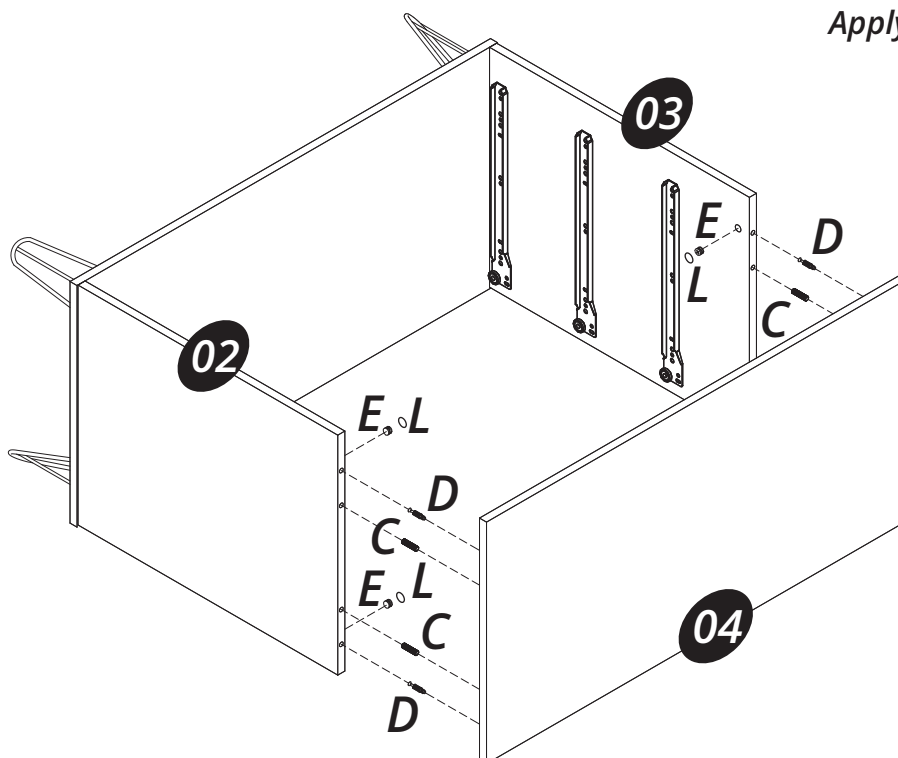
Step 02

Connect the parts (02) and (03) onto the part (01) with the hardware (C) and the hardware (B).



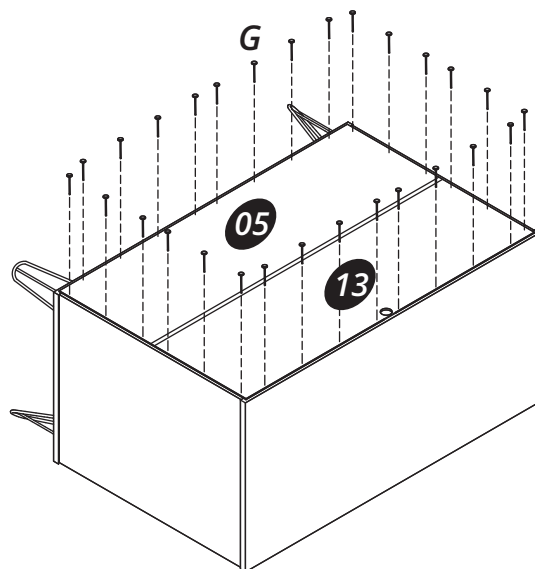
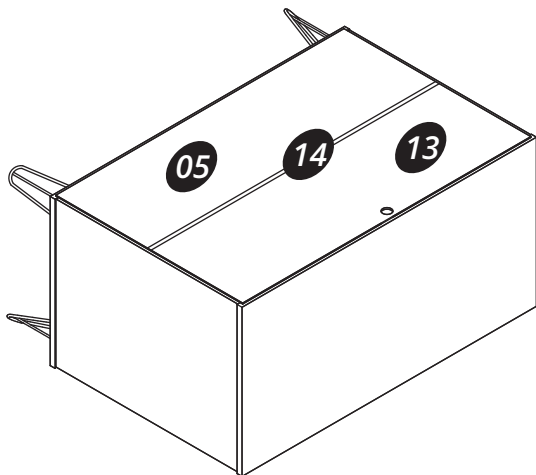
Step 03

Connect the part (04) onto the parts (02) and (03) using the hardware (C) and the hardware (D + E).
Apply the hardware (L) on the hardware (E).



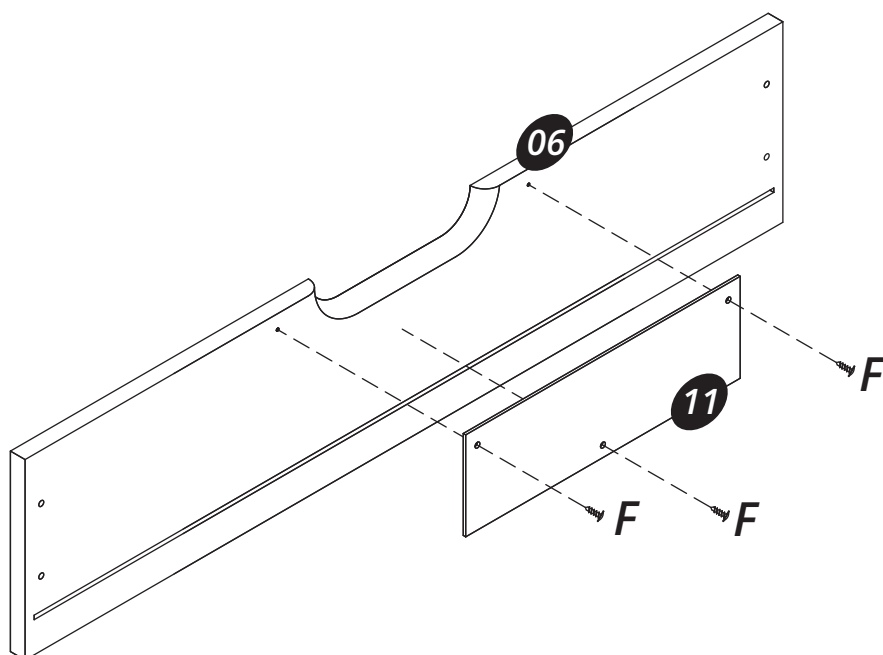
Step 04

Connect the part (05) and the part (13) joining with the part (14) and the hardware (G).



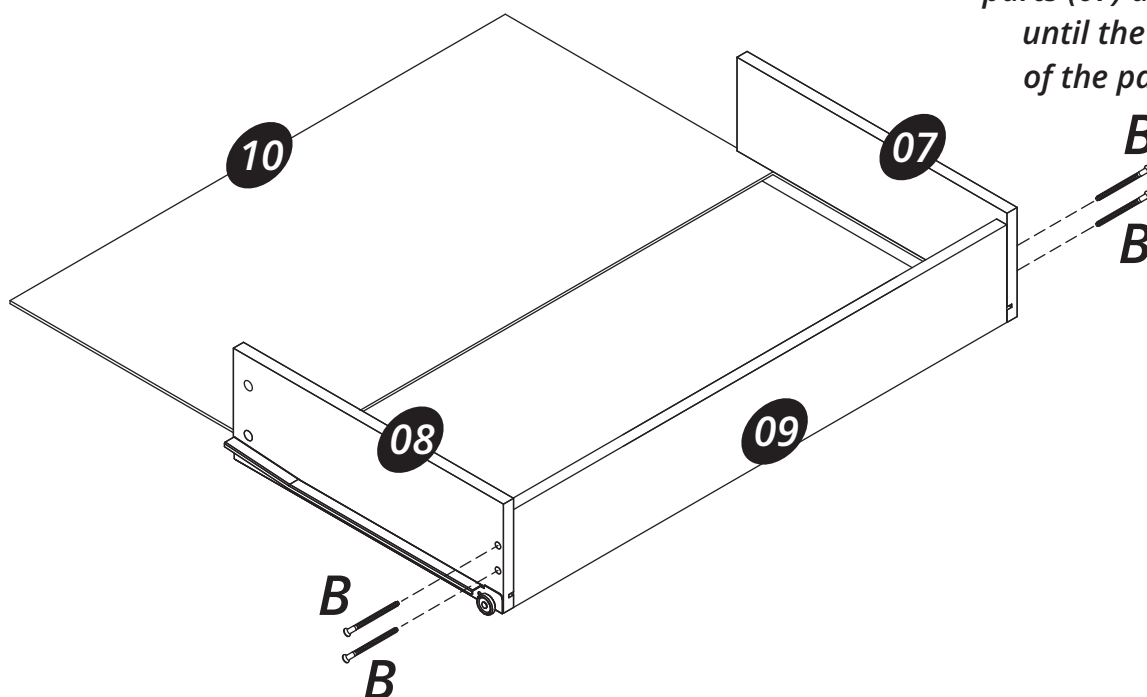
Step 05

Connect the part (11) onto the part (06) with the hardware (F).



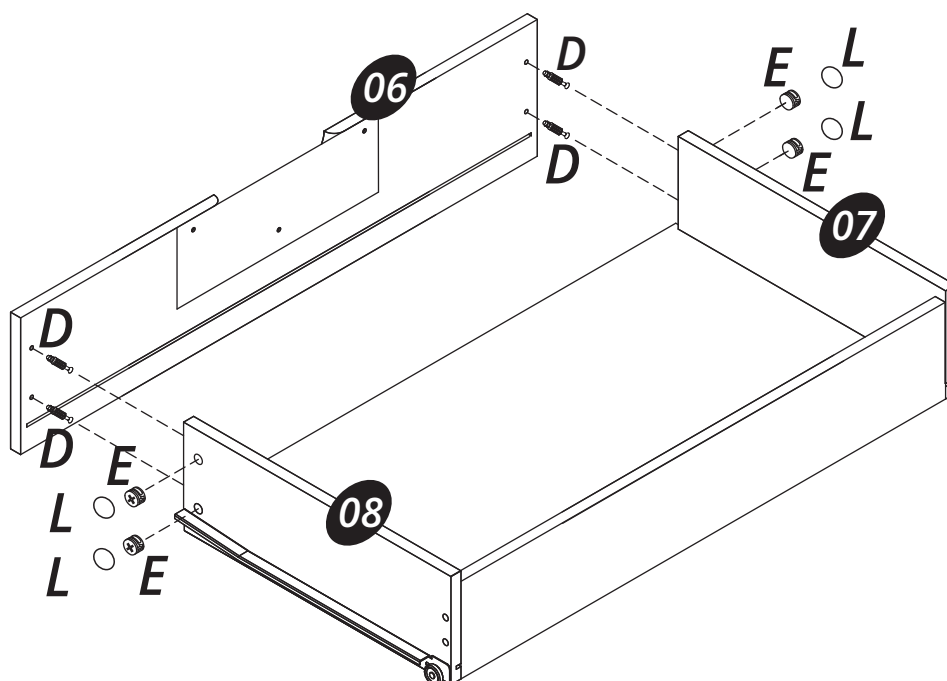
Step 06

Connect the parts (07), (08) and (09) with the hardware (B).
Apply the part (10) in the groove of the parts (07) and (08) until the groove of the part (09).



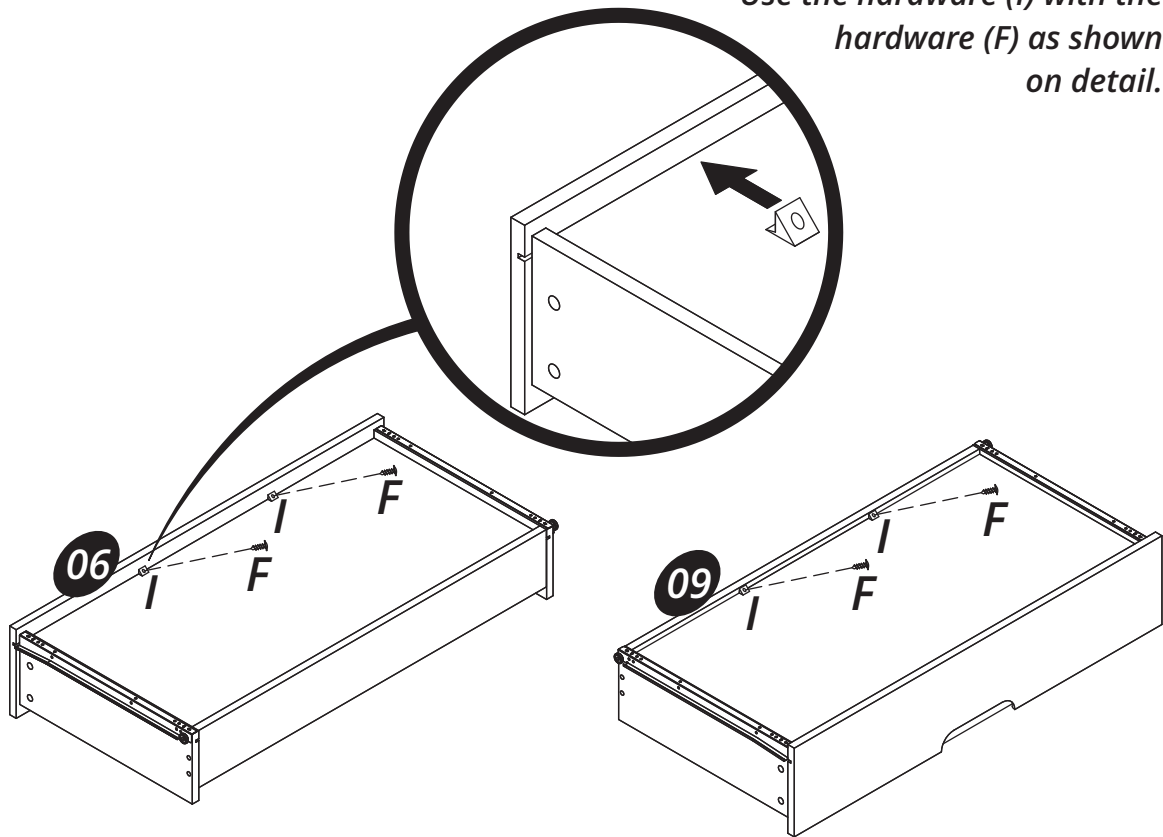
Step 07

Connect parts (07), (08) and (06) using the hardware (D + E).
Apply hardware (L) on the hardware (E).



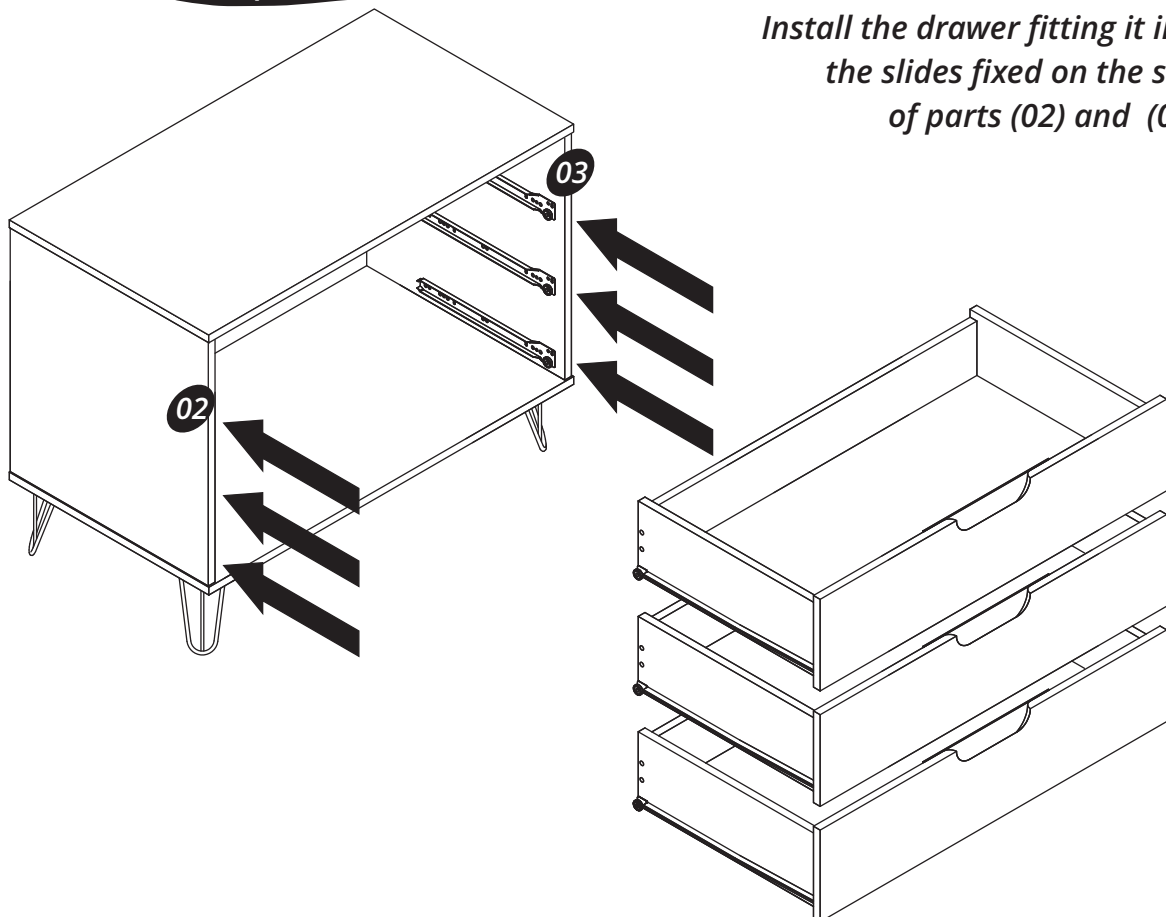
Step 08

Use the hardware (I) with the hardware (F) as shown on detail.



Step 09

Install the drawer fitting it into the slides fixed on the side of parts (02) and (03).

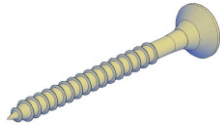


Step 10

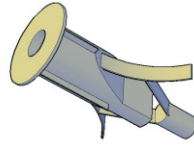
Attention! Tipover System



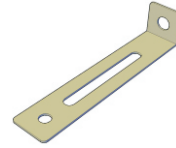
$F = 02x$



$H = 01x$

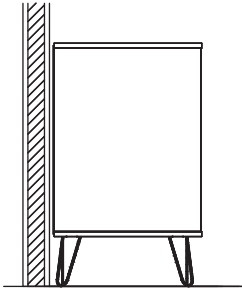


$J = 01x$

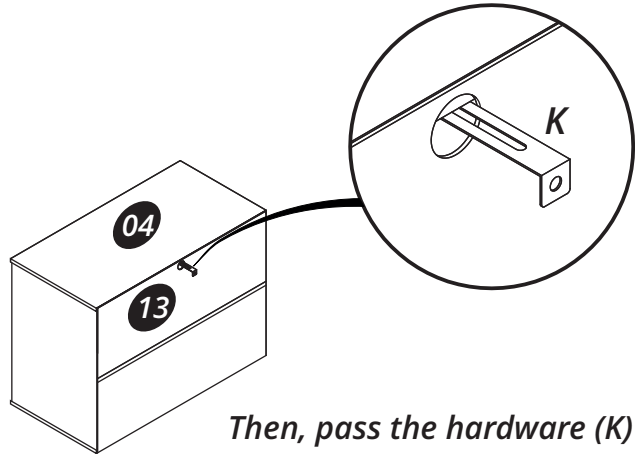


$K = 01x$

wall

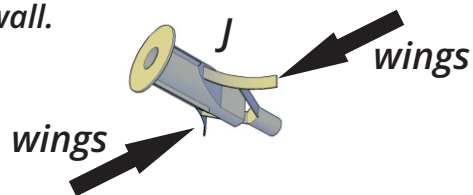


First, approach as close as possible to the wall

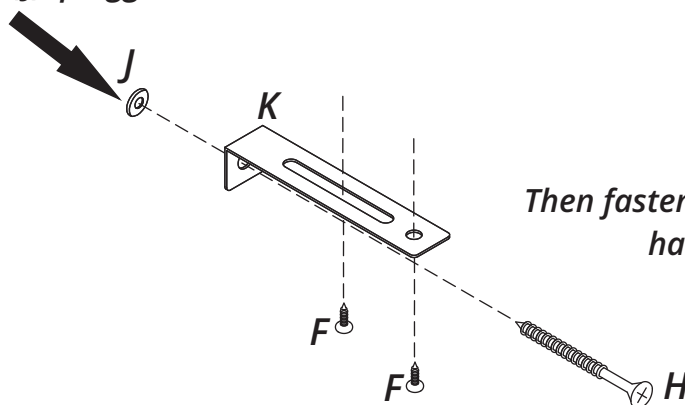


Then, pass the hardware (K) through the hole of the part (13) as shown in the figure above. You will need a pencil to mark where you should drill the wall with a 3/8" drill bit to put in the hardware (J).

**press the hardware wings (J) to put in the hole that you drilled in the wall.*



Hardware (J), plugged in the wall.



Then fasten with the hardware (F) the hardware (K) on the part (04)