

BROAD
Combats
Pollution

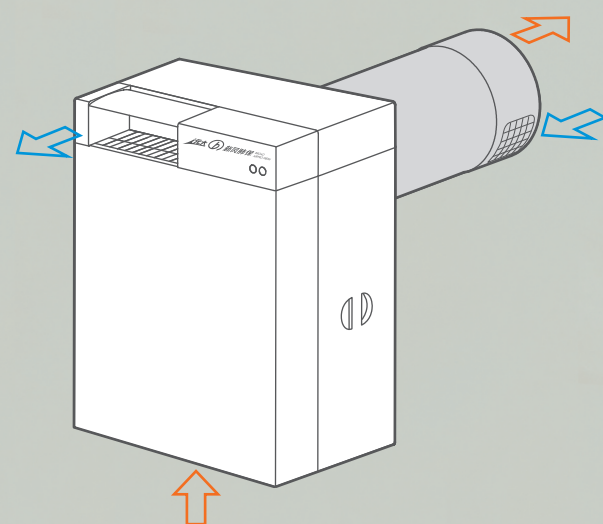


BROAD AIRPRO FRESH

BROAD Clean Air Product AirPro Collection

Making indoor air 10 times fresher
and 100 times cleaner

Model: FF100



For 2 cents a day,
20 years of good air is on the way

- PM2.5 filtration rate: 99%
- Fresh air heat recovery efficiency: 70% $\Delta t 45^{\circ}\text{F}$
- 100% fresh air, no mixed recycled air
- 59 CFM
- Area coverage 107~323 ft²

- Simple installation Open a hole on the exterior wall, mount the machine on the opposite side
- Easy cleaning and maintenance
 - Coarse filter to be cleaned every 1~3 months
 - HEPA filter to be replaced every 6~12 months
(If the air volume is reduced by about 30%, filter cleaning or replacement is needed)
 - The filter access door opens as soon as it is pressed

BROAD U.S.A. INC.
401 Hackensack Ave
Suite 503
Hackensack, NJ, 07601
Sales: 201-678-3010
Service: 1877-313-0163

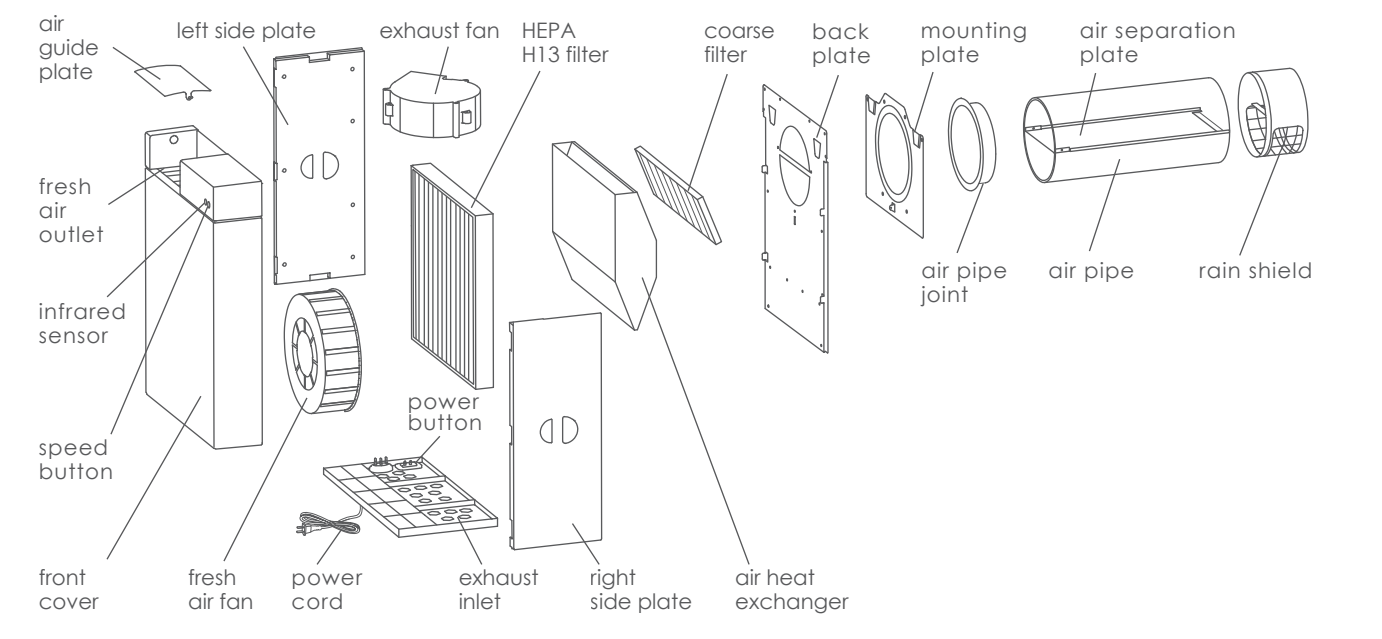


Product Standard: Q/YDKQ 001-2019



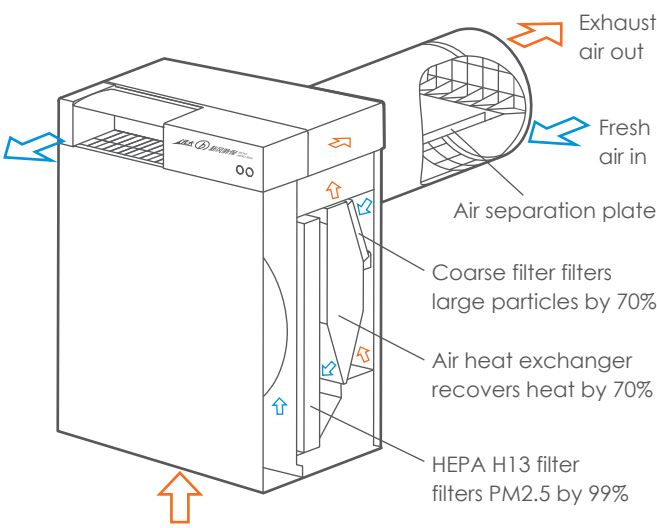
Installation & Maintenance

Structural Diagram

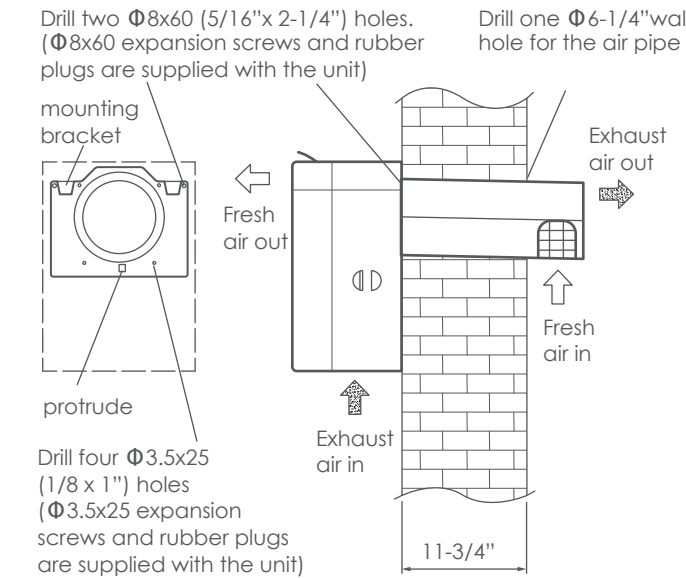


Parameter Table

Item	Sleep Mode	Level 1	Level 2	Level 3
Air Volume cfm	17.6	29.5	44	59
Power W	5	7	16	30
Noise dB(A)	27	32	45	54
Battery	110V~ 60Hz			
Filtration Efficiency	Filter PM2.5 by 99%			
Overall Dimensions	17.5 × 12.75 × 9.0 inch			



Installation Process



1. Confirm the installation location and drill the hole for the air pipe. The external opening of the hole should be 3/16~3/8" lower than the internal opening to prevent rain penetration
2. Insert the air pipe kit in the hole. Make sure the fresh air inlet is at the bottom side and keep the air separation plate horizontal. Fill the gap between the air pipe and the wall hole with polyurethane
3. Locate the screw holes according to the mounting plate and drill them out to fix the rubber plugs
4. Fix the mounting plate horizontally with the 6 expansion screws
5. Insert the hooks on the back of the machine into the brackets of the mounting plate, gently shake the machine with both hands to ensure it is firmly fixed. Insert the convex part under the circular hole of the mounting plate into the bracket of the machine back plate, then fix with screws (the left and right covers and heat exchanger need to be removed)
6. Install a plug socket within 19.5 inch under the machine, plug in and turn on machine

Accessories

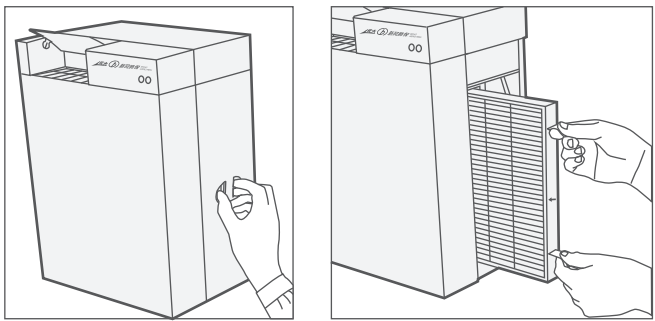
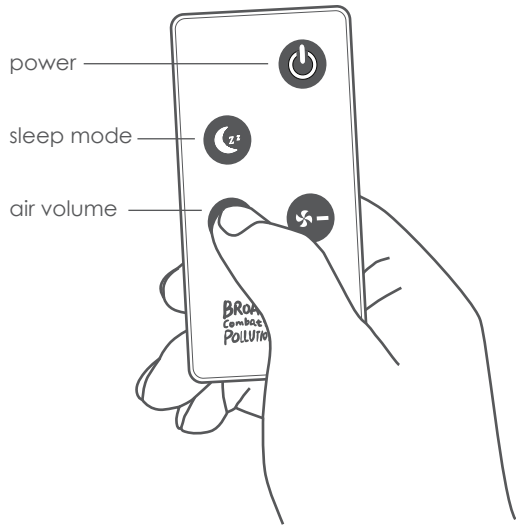
- | | |
|-------------------------------------|-------------------------|
| 1. Remote controller (with battery) | 5. Installation screws: |
| 2. Power cord | 2 of Ø8×60 |
| 3. Air pipe kit | 4 of Ø3.5×25 |
| 4. Mounting plate | 1 of ST4×10 |

Maintenance

1. Design life: 20 years
2. Users can perform maintenance themselves, or an optional maintenance service can be provided by BROAD or a BROAD certified service partner:
 - Clean the coarse filter every 1~3 months
 - Replace the HEPA H13 filter every 6~12 months
 - Troubleshooting and accessory replacement
3. Filter Cleaning & Replacement (only after powering off)
 - Press both sides of the spring switch on the side plate to remove it, then take out the coarse filter for cleaning (or HEPA filter for replacement)
 - The coarse filter must be thoroughly dry before being inserted back into the unit
 - While installing the HEPA filter, direct the arrow toward the interior of the room

Remote Controller

- Remote control: control distance should be less than 25 ft, battery model CR2025
- Control button:
 - Sleep mode (Light-green) Level 1 (Blue)
 - Level 2 (Green) Level 3 (Orange)



Warranty

- 1-year warranty from the date of purchase. For problems caused by design, manufacturing or transportation from factory, free repair or replacement will be provided
- If the user is unable to provide a valid proof of purchase, the warranty period will be limited to 3 months from the date of production shown on the unit.
- If the AirPro was damaged due to inappropriate use or storage, or the sticker was torn off, there will be a charge for repair

Troubleshooting

No.	Problem	Cause	Solution
1	Insufficient air volume	The filter is blocked	Clean or replace the filter following the requirement defined in "Maintenance"
2	Difficult to remove filter	1. Wrong removal method 2. The filter is stuck	1. Pull the two white tabs to steadily take out the filter 2. Seek help from BROAD or its designated service provider for repair or replacement
3	The side plate can hardly fit	The filter or the heat exchanger was not installed properly	Reinstall the filter or heat exchanger
4	The fan does not work	1. The power is off or the plug is loose 2. Remote controller failure	1. Turn on the power or re-plug 2. Seek help from BROAD or its designated service provider for repair or replacement
5	Remote controller failure	1. The controller battery is dead 2. The controller was damaged	1. Change the battery 2. Seek help from BROAD or its designated service provider for repair or replacement
6	The fan is making abnormal noise	Fan failure	Seek help from BROAD or its designated service provider for repair or replacement

Quality Certificate/ Warranty Card

Name: BROAD AIRPRO FRESH

Model: FF100

Serial Number:

Inspector:

Date of Purchase:

Shop:

Seller:

