

ASSEMBLY INSTRUCTIONS

Bulk Delivery Trucks

- Commercial Bulk Delivery Truck
- Industrial Bulk Delivery Truck

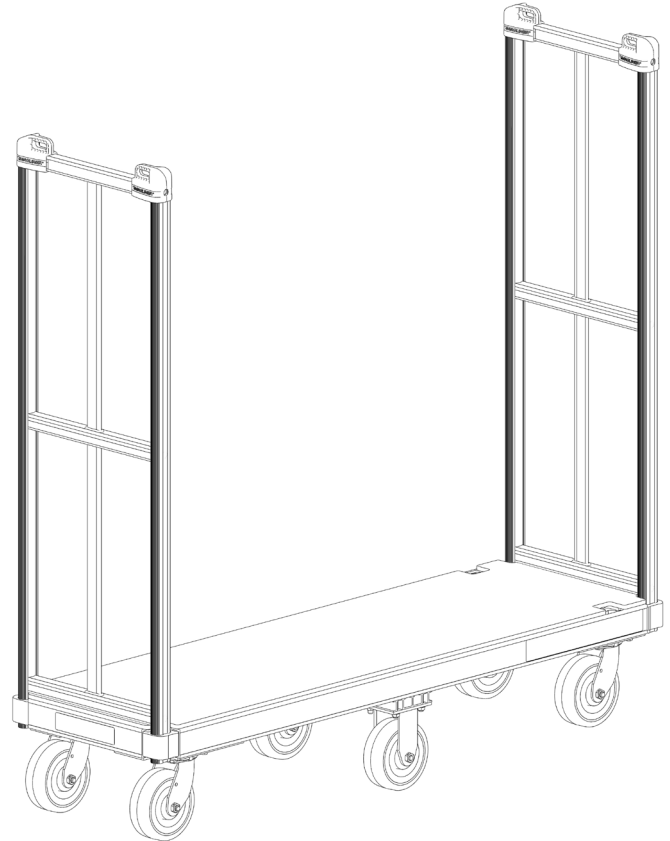
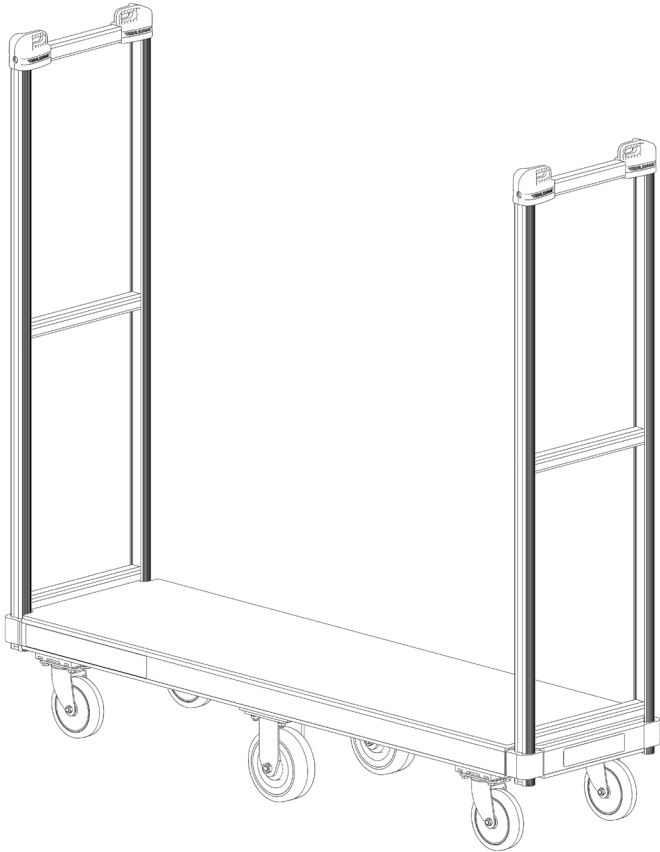


Table of Contents:

Commercial Bulk Delivery Truck	
Assembly Instructions	2
Industrial Bulk Delivery Truck	
Assembly Instructions	3
Industrial Bulk Delivery Truck, Soft Drink	
Option Assembly Instructions	4



COMMERCIAL BULK DELIVERY TRUCK PARTS LIST

Item	Description	Qty.	Part No.
A	Deck - 16" wide x 60" long	1	306175
B	Handle	2	306167
C	Caster - 5" x 1-1/4" thermoplastic rubber swivel caster	4	130063
D	Caster - 6" x 2" thermoplastic rubber rigid caster	2	13061
E	4" x 2-1/2" swivel caster spacer plate	Bag of 4	86164
	Hardware Pack (consists of items below)		86624
F	Hex head cap screw - 5/16"-18 x 1-1/2" long	16	80013
G	Flat washer for 5/16" bolt	16	80701
H	Flanged hex lock nut - 5/16"-18	16	80627
I	Hex head cap screw - 3/8"-16 x 1-1/4" long	8	80026
J	Flat washer for 3/8" bolt	8	80728
K	Flanged hex lock nut - 3/8"-16	8	80624

REQUIRED TOOLS

- (1) STANDARD 1/2" WRENCH
- (1) STANDARD 9/16" WRENCH
- (1) STANDARD SOCKET WRENCH
- (1) STANDARD 1/2" SOCKET
- (1) STANDARD 9/16" SOCKET

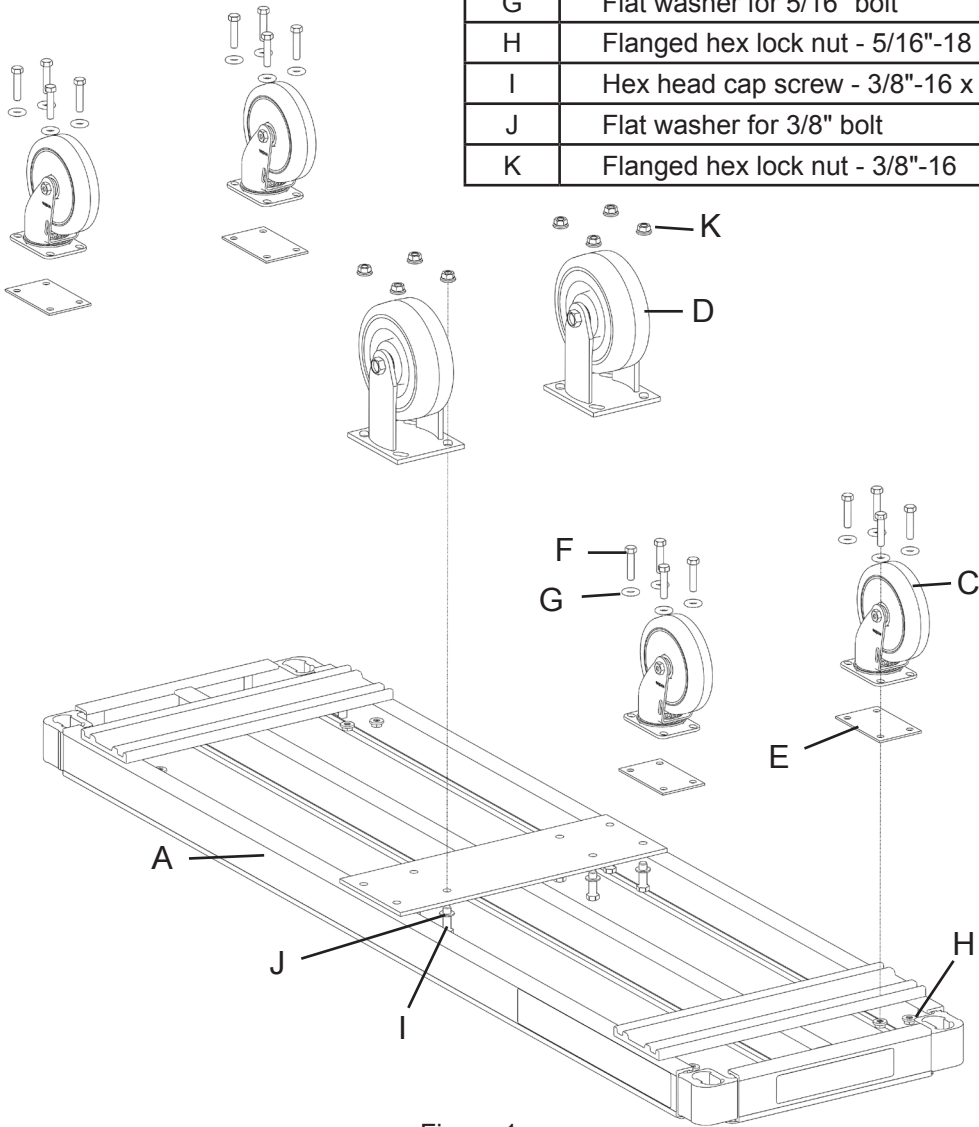


Figure 1

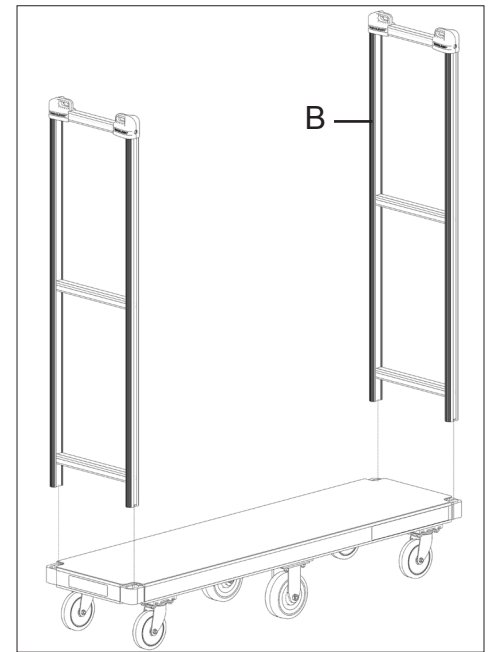


Figure 2

CASTER ASSEMBLY INSTRUCTIONS

1. Using the 5/16"-18 x 1-1/2" hex head screws (F), 5/16" washers (G) and 5/16"-18 flanged lock nuts (H), attach all four of the swivel caster plates (E) and the 5" swivel casters (C) onto the deck as shown in Figure 1.
2. Using the 3/8"-16 x 1-1/4" long hex head screws (I), the 3/8" washers (J) and the 3/8"-16 flanged lock nuts (K), attach both of the 6" rigid casters (D) onto the deck as shown in Figure 1.
3. Position the handle (B) as shown in Figure 2 and insert it into the sockets of the deck.

NOTE: Tighten all bolts securely. (Recommended: The 5/16"-18 bolts should be tightened to a torque value of 10-11 ft-lbs. and the 3/8"-16 bolts should be tightened to a torque value of 23 ft-lbs.)

INDUSTRIAL BULK DELIVERY TRUCK

Item	Description	Qty.	Part No.
A	Deck - 18" wide x 60" long	1	-
B	Handle	2	306150
C	Caster - 6" x 2" thermoplastic rubber swivel caster	4	130066
D	Caster - 6" x 2" thermoplastic rubber rigid caster	2	130067
	Hardware Pack (consists of items below)	1	86625
E	Hex head cap screw - 3/8"-16 x 2" long	8	80029
F	Hex head cap screw - 3/8"-16 x 1" long	16	80025
G	Flat washer	24	80728
H	Flanged lock nut - 3/8"-16	24	80624

Note: 8" caster models use four 8" x 2" thermoplastic rubber swivel casters (130079) and two 8" x 2" thermoplastic rubber rigid casters (130029).

REQUIRED TOOLS

- (1) STANDARD 9/16" WRENCH
- (1) STANDARD SOCKET WRENCH
- (1) STANDARD 9/16" SOCKET

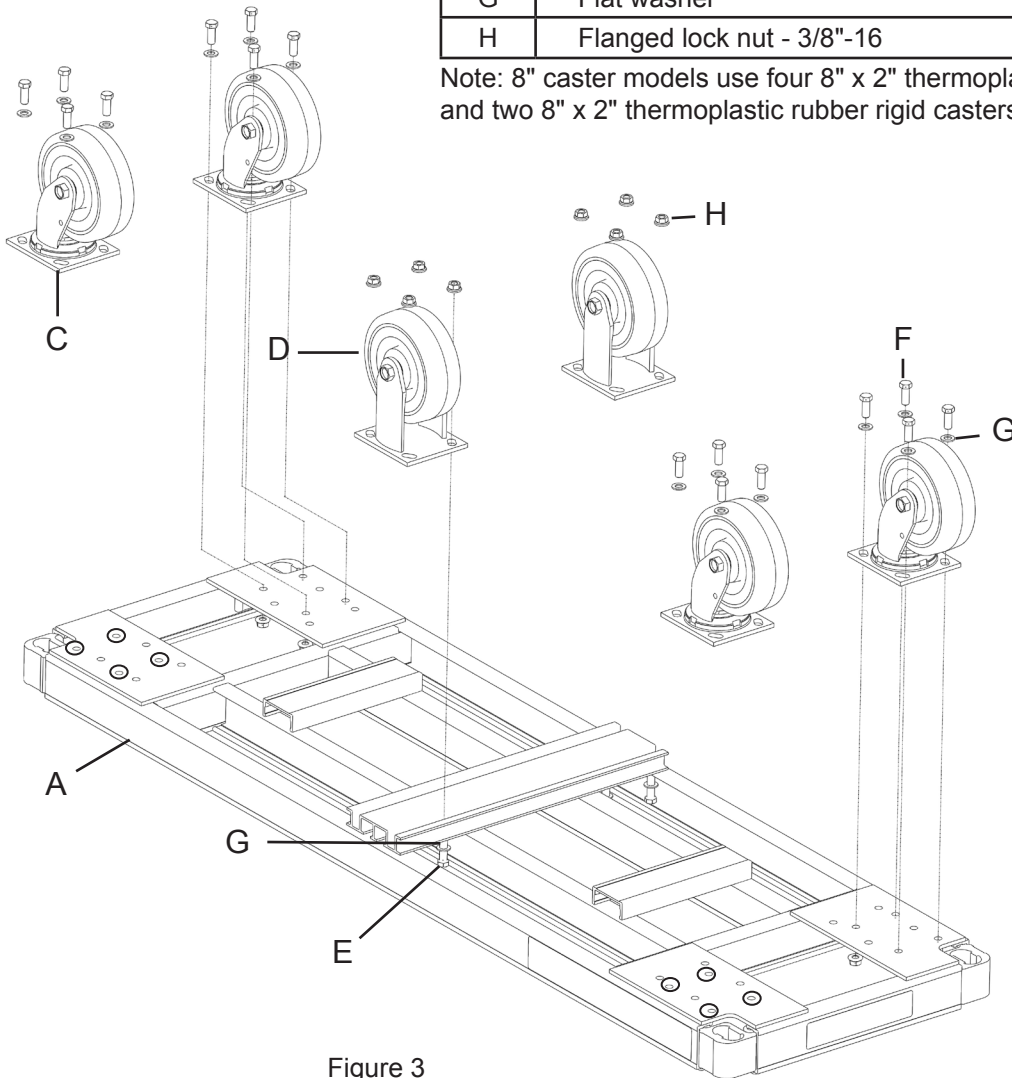


Figure 3

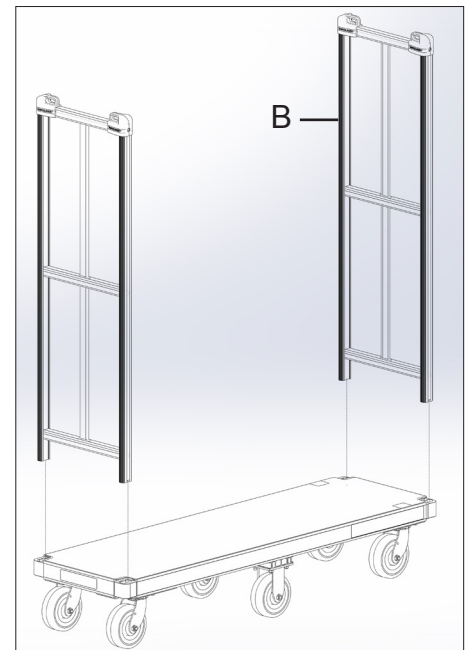


Figure 4

CASTER ASSEMBLY INSTRUCTIONS

1. Using the 3/8"-16 x 1" long hex head screws (F), 3/8"-16 flat washers (G) and 3/8"-16 flanged hex lock nuts (H), attach all four of the 6" swivel casters (C) onto the deck as shown in Figure 3.
2. Using the 3/8"-16 x 2" long hex head screws (E), the 3/8" washers (G) and the 3/8"-16 flanged hex lock nuts (H), attach both of the 6" rigid casters (D) onto the deck as shown in Figure 3.
3. Position the handle (B) as shown in Figure 4 and insert it into the sockets of the deck.

NOTE: Tighten all screws securely. (Recommended: The 3/8"-16 screws should be tightened to a torque value of 23 ft-lbs.)

INDUSTRIAL BULK DELIVERY TRUCK - SOFT DRINK VERSION

Item	Description	Qty.	Part No.
A	Deck - 18" wide x 60" long	1	-
B	Handle	2	306150
C	Caster - 6" x 2" thermoplastic rubber swivel caster	4	130066
D	Caster - 6" x 2" thermoplastic rubber rigid caster	2	130067
	Hardware Pack (consists of items below)	1	86625
E	Hex head cap screw - 3/8"-16 x 2" long	8	80029
F	Hex head cap screw - 3/8"-16 x 1" long	16	80025
G	Flat washer for 3/8" bolt	24	80728
H	Flanged lock nut - 3/8"-16	24	80624

Note: 8" caster models use four 8" x 2" thermoplastic rubber swivel casters (130079) and two 8" x 2" thermoplastic rubber rigid casters (130029).

REQUIRED TOOLS

- (1) STANDARD 9/16" WRENCH
- (1) STANDARD SOCKET WRENCH
- (1) STANDARD 9/16" SOCKET

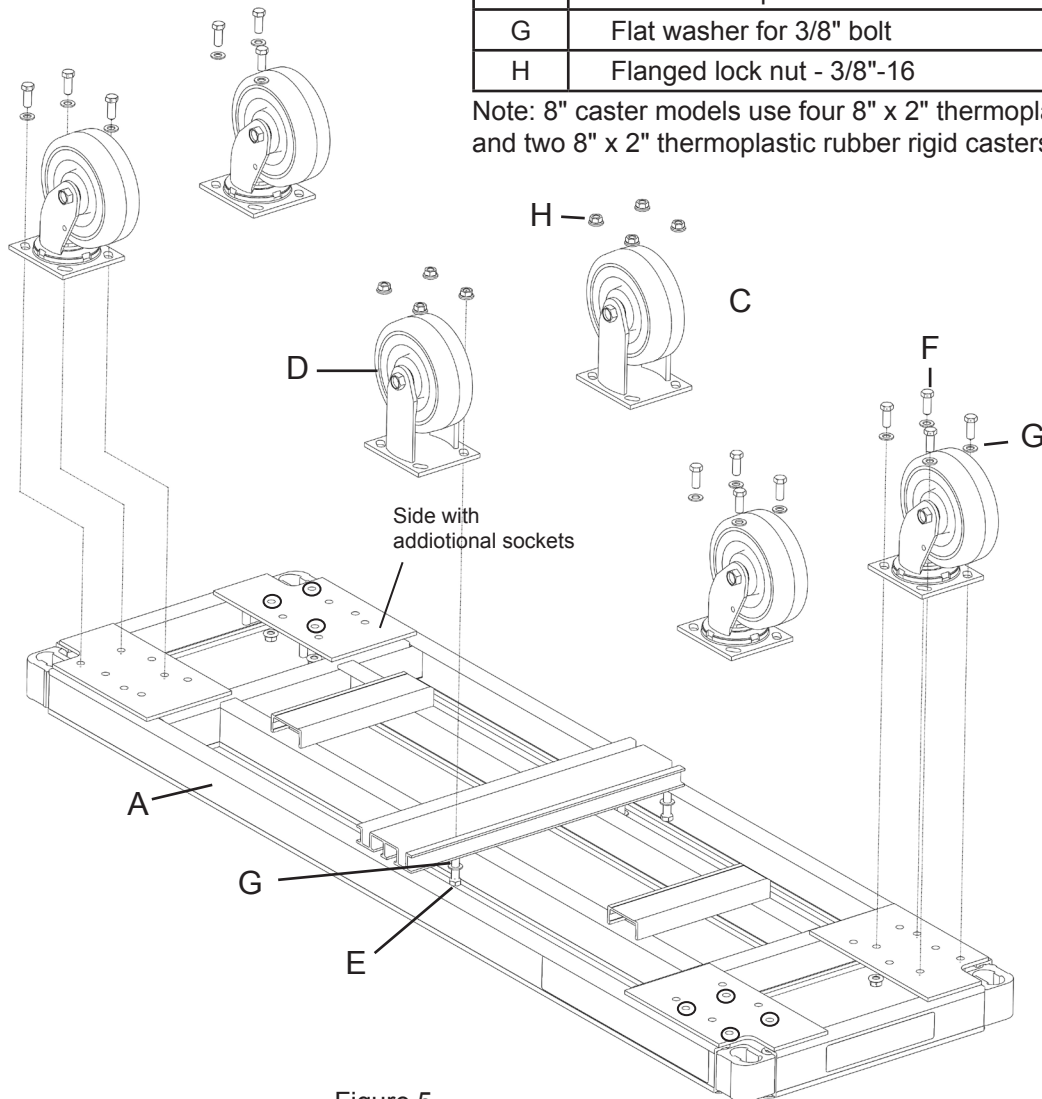


Figure 5

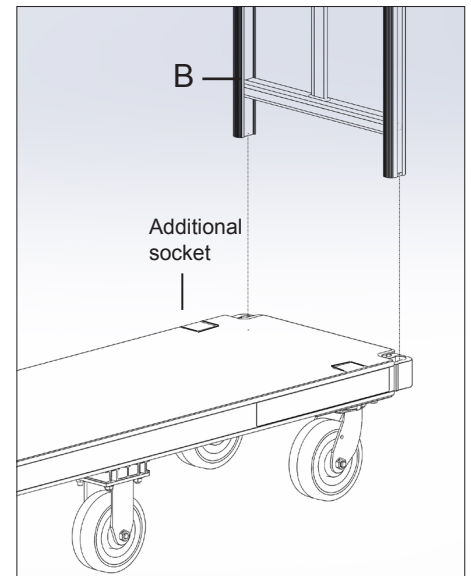


Figure 6

CASTER ASSEMBLY INSTRUCTIONS

Note: If you have the soft drink model, you will only install 3 sets of hardware for each caster on the end of the deck with the additional end rack sockets as shown in Figure 6. All other casters use 4 sets of hardware. Extra hardware can be discarded.

1. Using the 3/8"-16 x 1" long hex head screws (F), 3/8"-16 flat washers (G) and 3/8"-16 flanged hex lock nuts (H), attach all four of the 6" swivel casters (C) onto the deck as shown in Figure 5.
2. Using the 3/8"-16 x 2" long hex head screws (E), the 3/8" washers (G) and the 3/8"-16 flanged hex lock nuts (H), attach both of the 6" rigid casters (D) onto the deck as shown in Figure 5.
3. Position the handle (B) as shown in Figure 6 and insert it into the sockets of the deck.

NOTE: Tighten all screws securely. (Recommended: The 3/8"-16 screws should be tightened to a torque value of 23 ft-lbs.)