



ZIPPITY

Easy Does It!

MAUI
GARDEN FENCE
KIT 3-PACK
(24"W X 25 ½"H)

30 MIN

Approximate assembly time

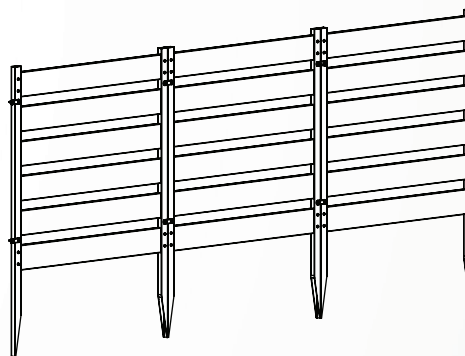
Want to see a video on how to
assemble this product?
Scan the QR code



ASSEMBLY INSTRUCTIONS

ZP19065 (WHITE COLOR)

ZP19066 (CHARCOAL COLOR)



GENERAL INFORMATION



IMPORTANT

- + Check the inside of the larger pieces in your box for other materials packed inside.
- + When assembling components, place on a non-abrasive surface (i.e. shipping box) to avoid scratching.
- + We recommend an area approximately 5'x 8' for unobstructed assembling.
- + You should not need to use excessive force when assembling components.

MISSING OR DAMAGED PARTS?

VISIT OUR WEBSITE FIRST, SO WE CAN HELP YOU RIGHT AWAY!

Although great care has been taken to ensure proper packaging and handling of this product, occasionally problems occur. If you discover any missing, damaged, or defective parts, please visit our website to order replacement parts. If you experience any further trouble with your product, please contact our customer service department.

 parts.nychbrands.com

 support@zippity-outdoor.com

 **704-892-5222 / 877-234-6196**

Customer service agents are available to take calls weekdays from 8am-5pm EST. If you call outside of business hours, please leave a voicemail.

To help you quickly and accurately, please have reference item number **ZP19065/ZP19066** and the specific part name which can be found on page 4. It is helpful if you can provide the batch lot which is a stamped number on the end of the box.

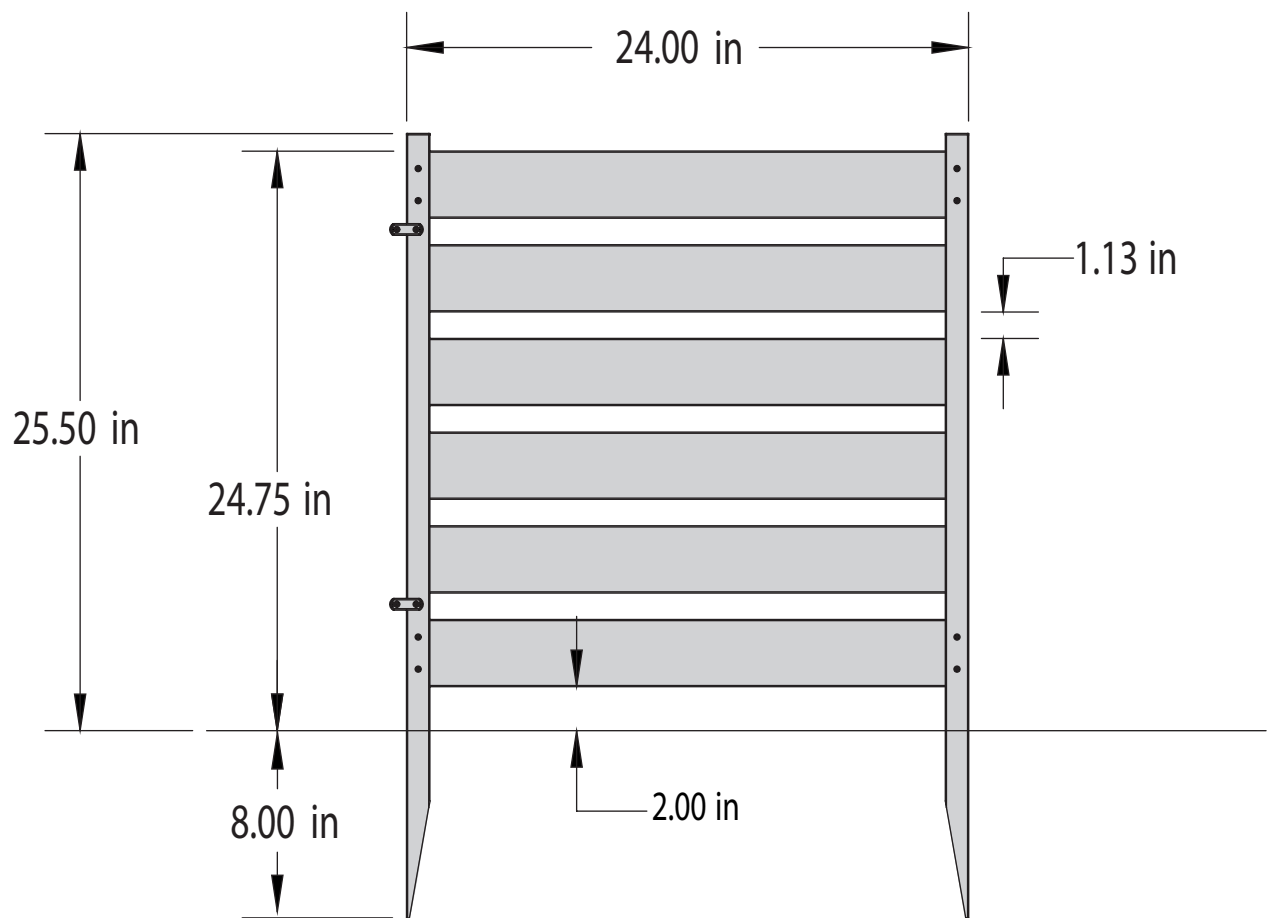
NEED ASSEMBLY HELP?

If you are having problems with the assembly or installation of this product, we are happy to assist you with the process, **so please give us a call at 704-892-5222 / 877-234-6196.**

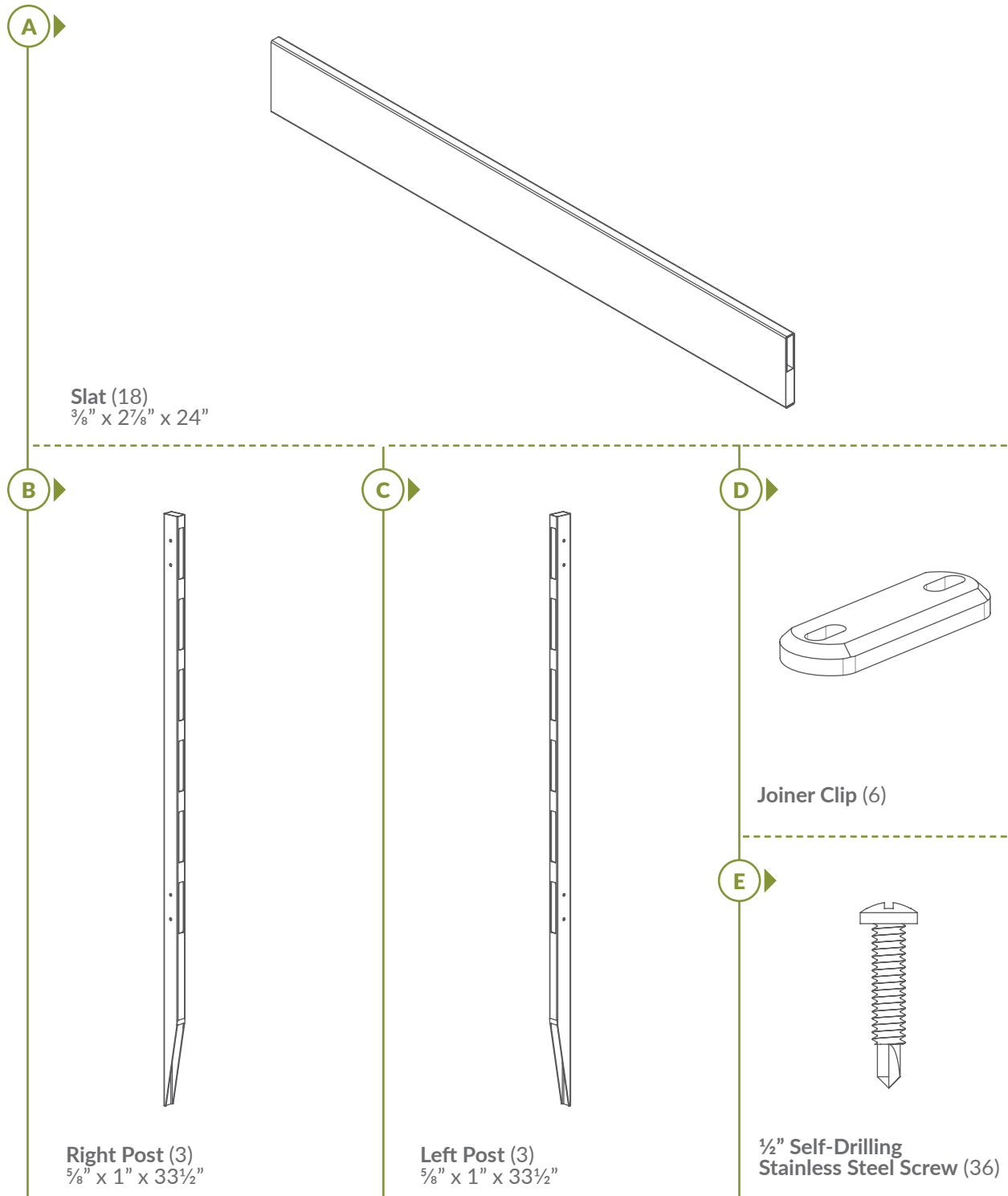
NEED TO RETURN?

If for some reason you need to return this product, please allow us to help resolve your issues first. If you still decide to return the product, **you will need to initiate the return from the company you originally purchased from.**

Detailed Product Dimensions & Specifications



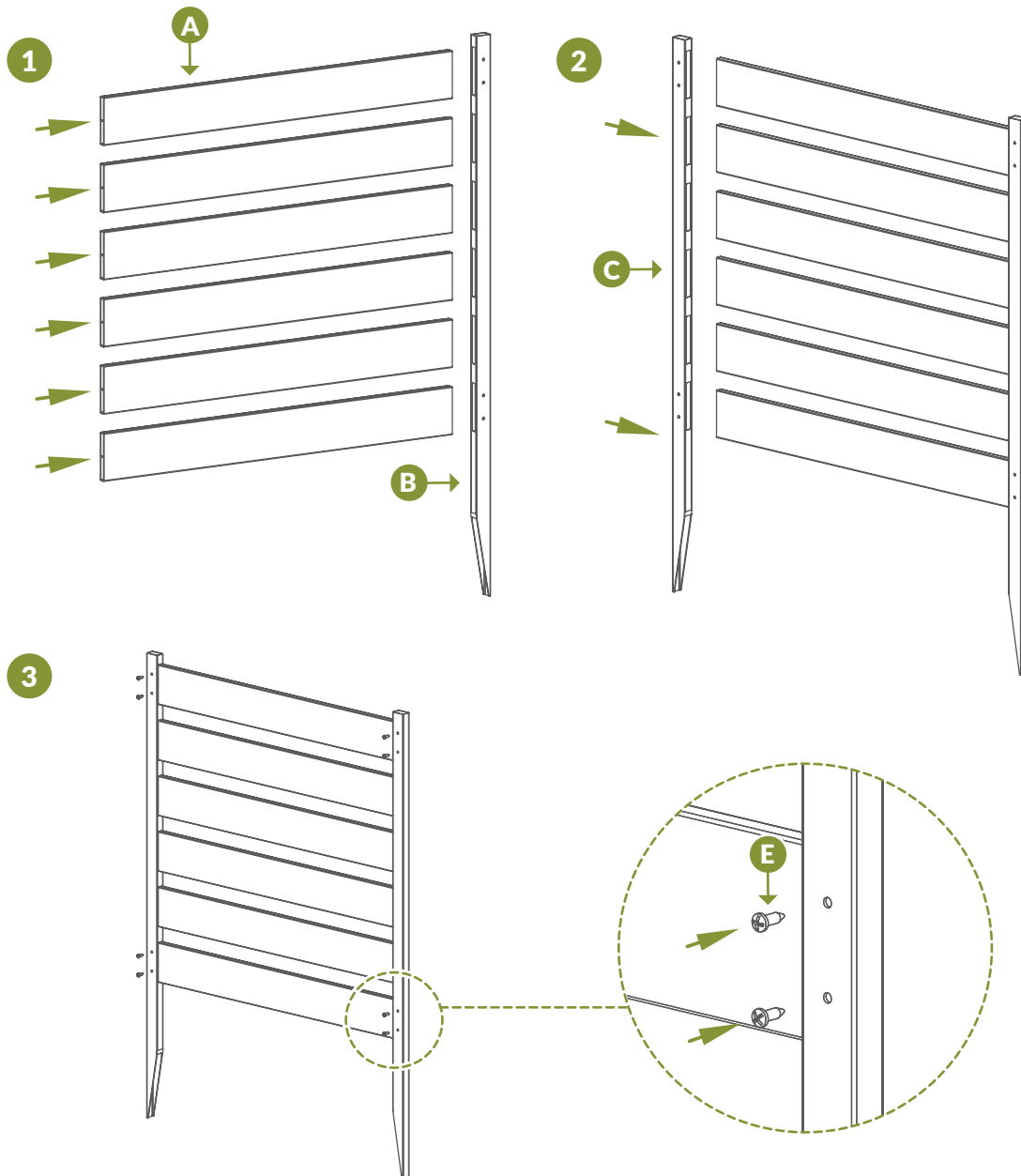
STEP 1: LAY OUT MATERIALS



STEP 2: ASSEMBLE THE FENCE FRAME

STEP 2.1 ▶

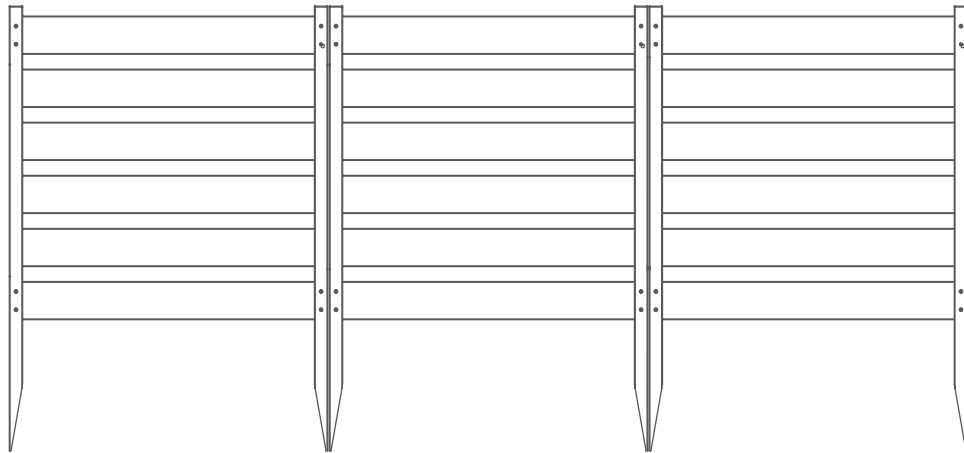
1. Insert (6) Slats **(A)** into the Right Post **(B)** until they hit the back wall of the post.
2. Insert a Left Post **(C)** over the slats until they hit the back wall of the post.
3. Drive (8) total ½" Self-Drilling Stainless Steel Screws **(E)** into the pre-drilled holes in the posts.



STEP 3: ASSEMBLE THE REMAINING PANELS

STEP 3.1 ▶

- ▶ Repeat Step 2 to assemble the the other two fence panels.

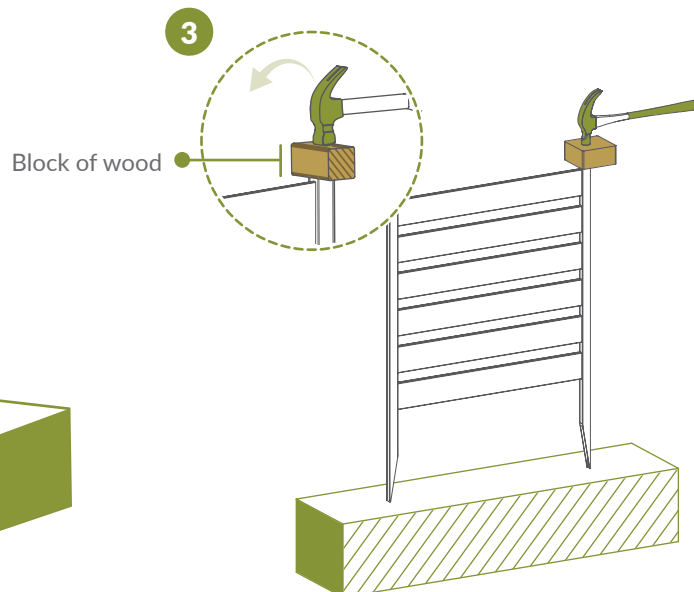
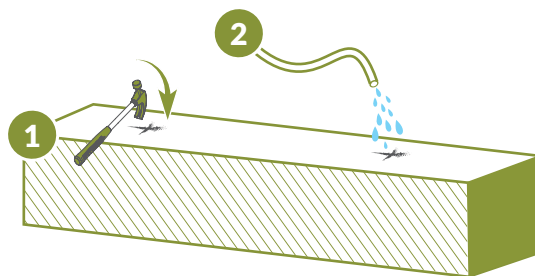


STEP 4: INSTALL THE FENCE

STEP 4.1 ▶

- ▶ Move the panel to its final location, and identify where the posts will be located. Push down on the top of the posts with both hands.

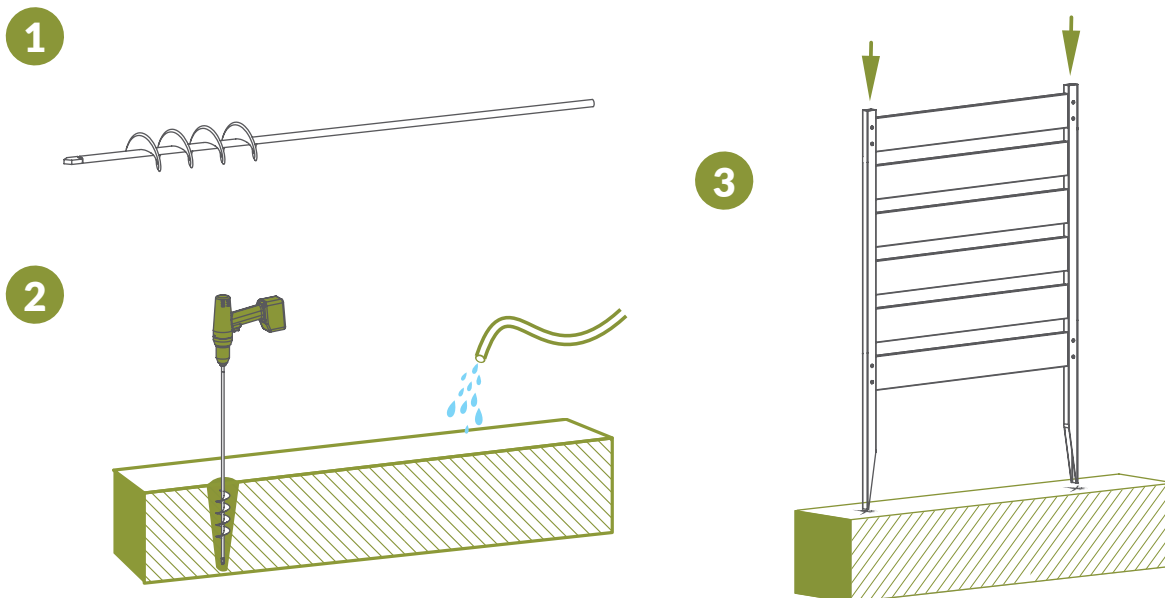
1. If your ground is too hard, loosen the top 6" or 7" of the ground with a claw hammer as illustrated.
2. Add water to the loosened soil.
3. Use a block of wood to protect the top of the post, and gently hammer the post into the ground.



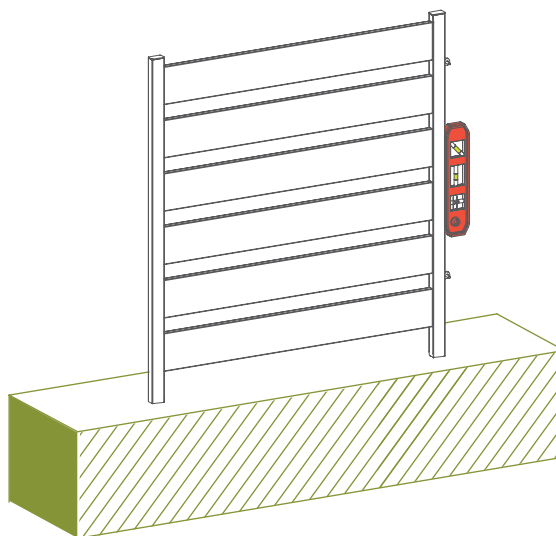
STEP 4.2 ▶

Optional in hard ground: If your ground is too hard, or you have more than 3 or 4 panels to install, please consider these options:

1. Use a 1¾" diameter auger bit (commonly used for planting tulips) as illustrated (\$15-\$20 on Amazon.com).
2. Drill a hole about 12" to 16" deep at the desired location, and fill the holes with water as illustrated.
3. Push the fence posts into the holes.

**STEP 4.3** ▶

- ▶ Level the assembled unit, backfill, and compact dirt around the base of each post to strengthen the unit.

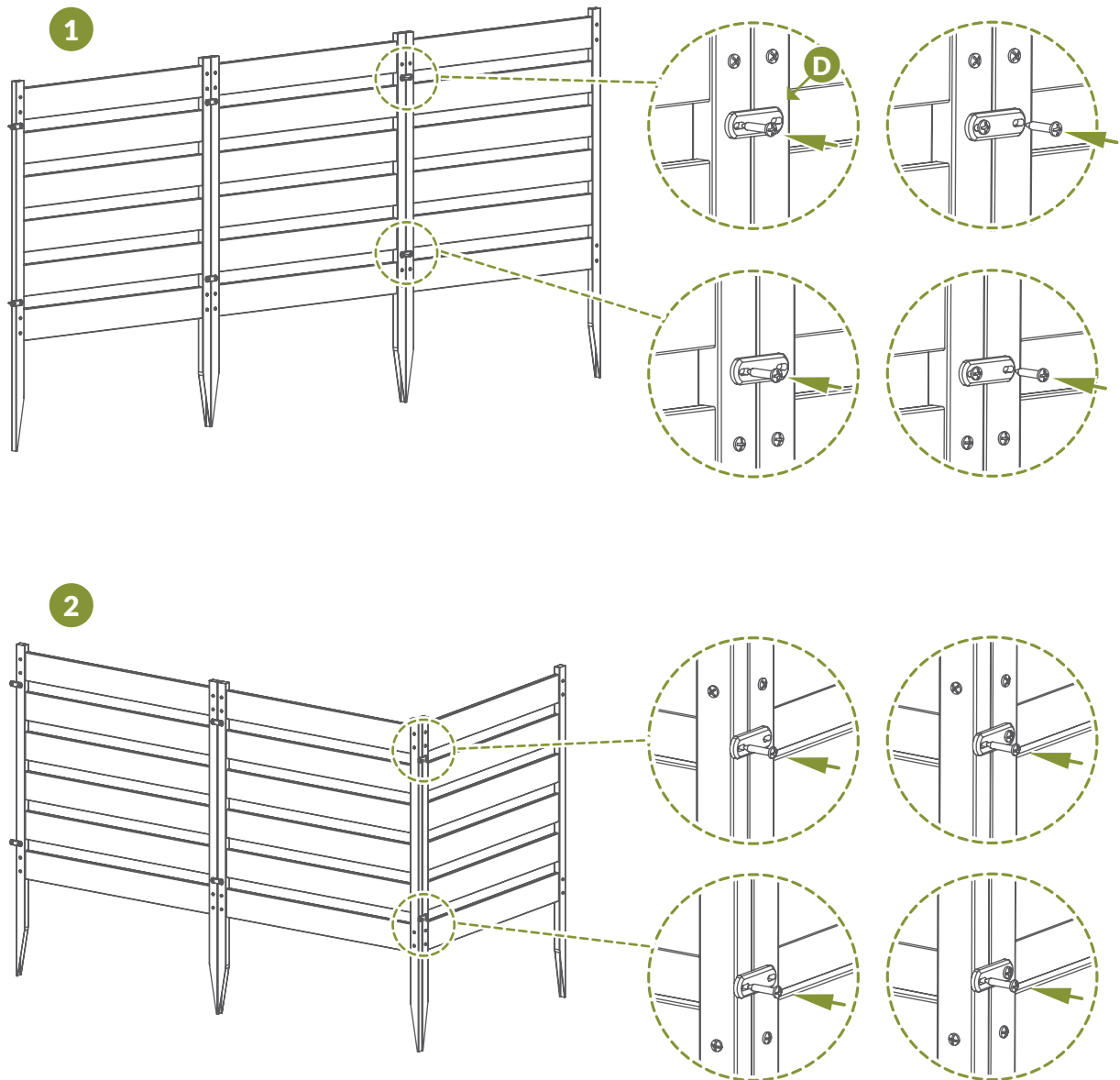


STEP 5: CONNECT THE PANELS

STEP 5.1 ▶

1. Straight Line Application: Fasten the panels together with (2) Joiner Clips (**D**) using (4) ½" self-drilling stainless steel screws.

2. Corner Application: Fasten the panels together with (2) Joiner Clips (**D**) using (4) ½" self-drilling stainless steel screws.





ZIPPITY

Easy Does It!



6935 Reames Rd. Ste. K.
Charlotte, NC 28216



support@zippity-outdoor.com

704-892-5222
877-234-6196



WWW.ZIPPITY-OUTDOOR.COM