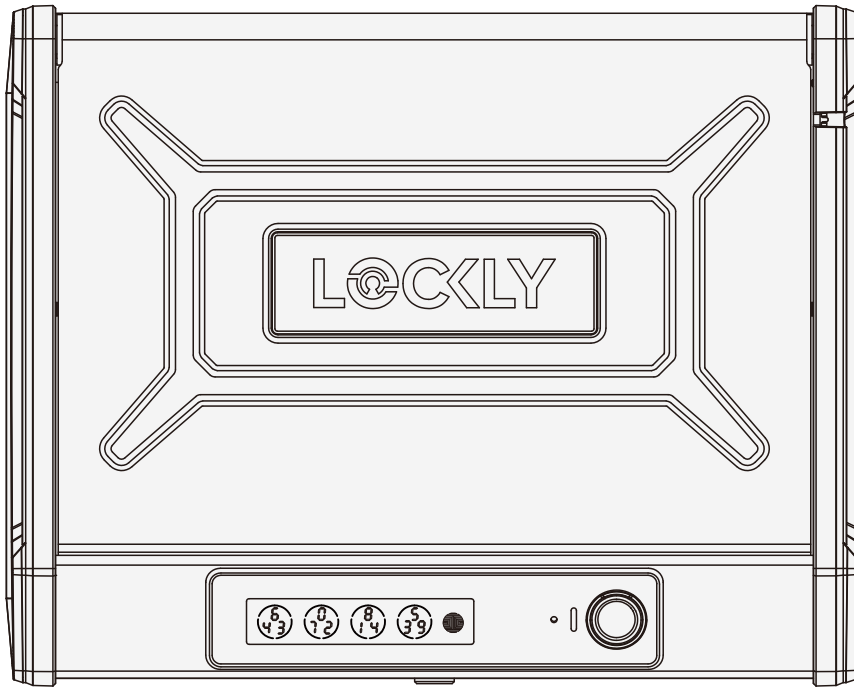


LOCKLY SMART SAFE



USER MANUAL

LOCKLY
Enjoy the freedom™

Table of Contents

Section 1 - Product Highlights

1.1	Product Features	1
-----	------------------	---

Section 2 - Product Overview

2.1	Product Overview - Exterior	2
2.2	Product Overview - Interior	3
2.3	Understanding Your Smart Safe	4
2.4	Rebooting Your Smart Safe	5
2.5	Low Battery	6
2.6	Changing The Battery	7

Section 3 - Installation & Setup

3.1	Optional Installation	8
3.2	Setting Up the Secure Link Wi-Fi Hub	10
3.3	Connecting Your Lockly Smart Safe	12

Section 4 - Using Your Smart Safe

4.1	Configuring Access	14
4.2	Adding Access Codes	15
4.3	Checking/Deleting Access Code	15
4.4	Entering Programming Mode	16
4.5	Restore Factory Settings	16
4.6	Pairing to a New Mobile Device	17
4.7	Adding a Fingerprint	19
4.8	Fingerprint Scanning Directions	21
4.9	Fingerprint Scanning Tips & Troubleshoot	23
4.10	Shine Mode	24

Section 5- Unlocking

5.1	Unlocking with Access Codes	25
5.2	Unlocking with Fingerprint	26
5.3	Unlocking with App	27
5.4	Unlocking with QR Code	27
5.5	Unlocking with Physical Key	28
5.6	Safe Mode - Overview	29
5.7	Disabling Safe Mode	30

Section 6 - Advanced Features

6.1	Offline Access Code™ (OAC)	31
6.2	eBadge	32
6.3	Smart-Sync	32
6.4	Sub-Admin Access	32
6.5	Duress Finger Alert	32
6.6	Twin-Credential Opening Capability	32

Section 7 - Key Duplication

7.1	Key Duplication	33
-----	-----------------	----

Section 8 - Important Notes

8.1	Important Notes	34
-----	-----------------	----

Section 9 - Maintenance and Cleaning

9.1	Cleaning	34
-----	----------	----

Section 10 - Safety Precautions

10.1	Safety Precautions	35
------	--------------------	----

For additional support, visit <http://Lockly.com/help>
or email help@Lockly.com



1.1 Product Features

Patented Hack-Proof PIN Genie Keypad

Digits are randomly displayed on the key pad ensuring access codes to be undetectable to intruders after repeated use. Numbers are randomly distributed across 4 buttons, with 3 numbers in each button. Users can press any button showing their number. Location of the numbers are always different every time someone uses the keypad, making it hard for prying eyes to guess the correct code.

Multiple Access Codes & Monitoring

Store up to 37 Access Codes for family, friends and guests, as well as monitor entry and exit records. You can also upgrade up to 100 user access codes with Lockly\OS.

Advanced 3D Fingerprint Recognition

Biometric Fingerprint Recognition protocol allows up to 99 registered fingerprints to be used and accepts only actual fingerprints - preventing lifted prints from being used.

Live Monitoring

Through your smartphone, monitor Smart Safe access from anywhere in the world and Secure control access all permissions.

Offline Access Code™ (OAC)

The offline access code can allow owners to issue access codes, set the allowed access duration, all without Lockly ever connecting to the internet, so in case of power outage, you can still magically and remotely issue Access Codes without any connection to the web.

Backup Keys and Type-C USB Socket

Lockly Smart Safe can be opened with physical backup keys. There is type-C connection socket that can be the source of continuous power supply or can be used as power backup in case the Safe runs out of battery.

Pneumatics Easy-Lift Mechanism

Unlock Safe quietly and in-sync with LED lights that allows users to unlock, grab valuables with a single hand. Pneumatics mechanism can be easily replaced (DIY) when unlocking performance slows down overtime.

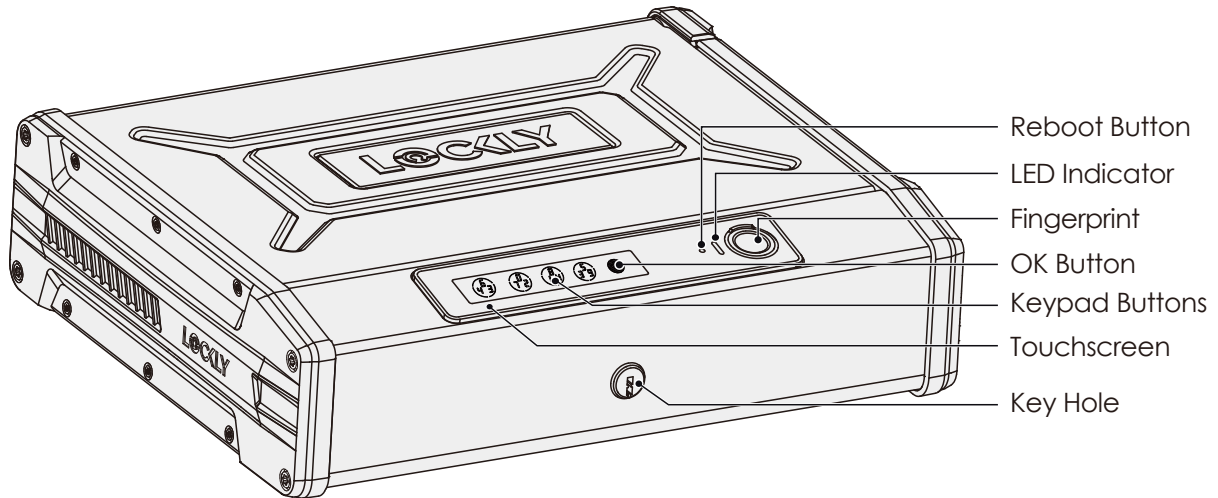
Tamper-proof / Premium Build

Made of drop tested fortified steel alloy with corrosion resistant coating, magnet resistant and laser-cut 3D keyway. With included anti-theft cable and screws to prevent the Smart Safe from being moved or stolen.

Air Transfer compatible

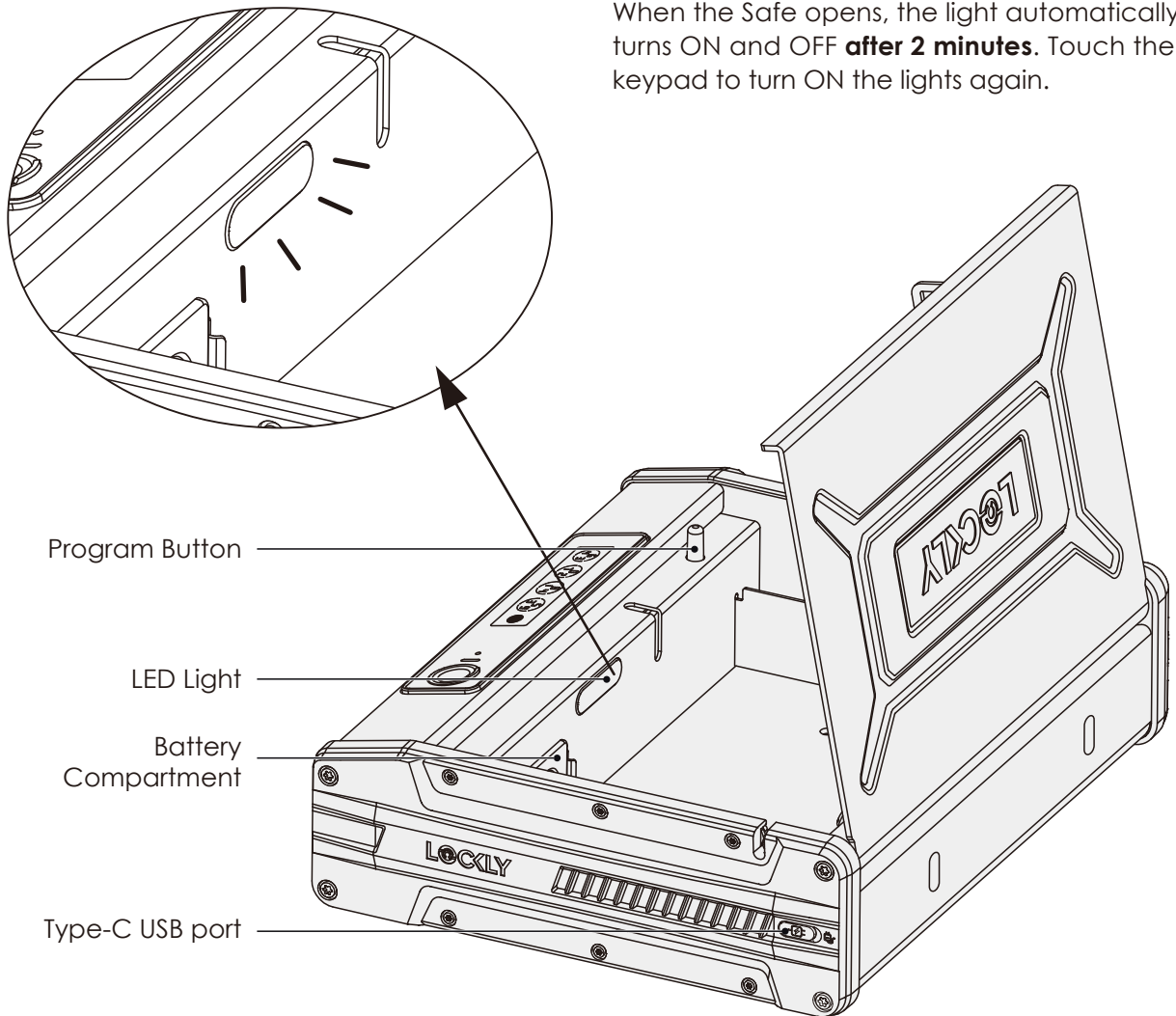
Quickly transfer fingerprint and trusted user profiles from your Lockly smart locks to your Smart Safe.

2.1 Product Overview - Exterior



2.2 Product Overview - Interior

When the Safe opens, the light automatically turns ON and OFF **after 2 minutes**. Touch the keypad to turn ON the lights again.



2.3 Understanding Your Smart Safe

Understanding some key functions of operating your Smart Safe is important. The following guides will walk you through setting the Safe, adding **Access Codes**, deleting **Access Codes**, adding **fingerprints**, deleting **fingerprints**, how to configure your **OAC (Offline Access Code™)** and more...

For any questions you can always visit <https://Lockly.com/help> for assistance.

Don't forget that Lockly works best with our iOS and Android™ app. Please download the app by visiting the link below.



Scan or visit Lockly.com/app

2.4 Rebooting Your Smart Safe

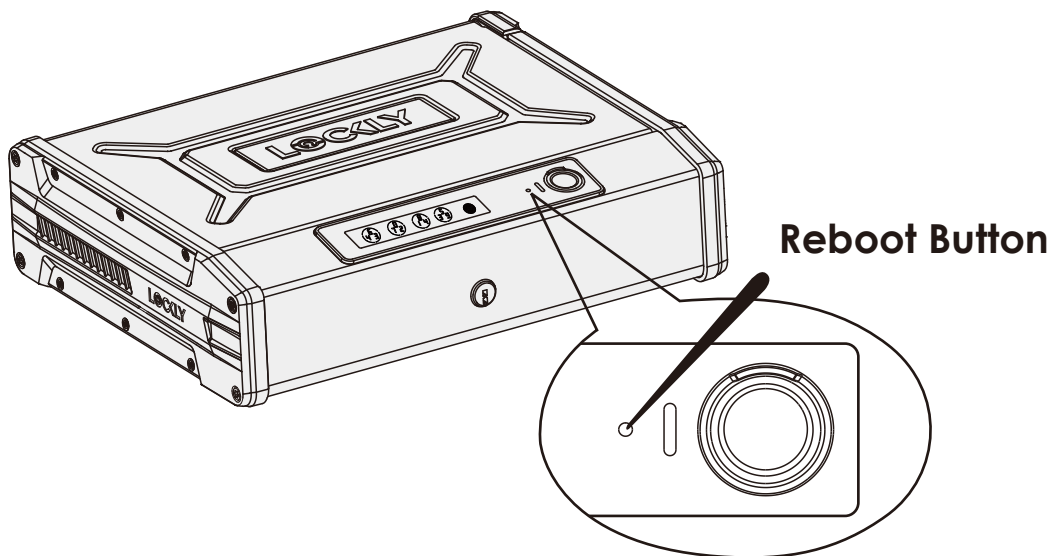


NOTICE

Reboot Lockly in case of dead battery or malfunction. No settings will be changed and all Access Codes will still be stored within Lockly.


Press and release the reboot button when you want to reboot the Safe. Your Lockly will beep once after reboot. Only reboot when necessary.


You will need something small such as a paperclip, to press the reboot button located on the exterior of the safe, left of the fingerprint reader. Insert the paperclip and press down firmly and let go. Your screen should restart and the safe should reboot automatically.

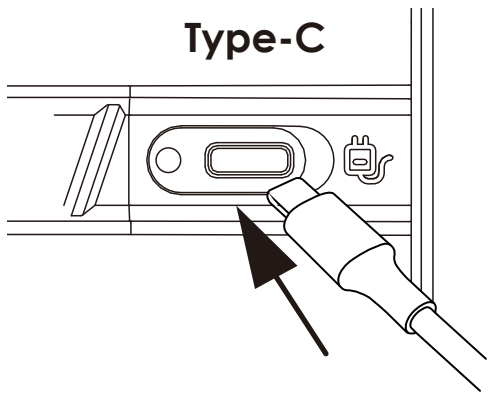


2.5 Low Battery

When the battery is in seriously low condition, Lockly will make continuous beeping sounds in addition to the flashing low battery icon on the touch screen. You should replace batteries **immediately** to avoid your Smart Safe from **shutting down**.

When your Safe low-battery warning alert finally dies, you will have 3 chances to unlock your Safe either by a password, APP or fingerprint. If the unlock was successful, the low-battery warning alert will be on for 1 minute. After which, the Safe will go to dead-battery mode and the screen will display a low-battery icon .

Condition	Indicator	Solution
Low Battery	Battery Icon on the display keypad will light up to indicate low battery  .	Replace batteries immediately to avoid battery failure. Lockly can still operate up to 300 cycles in low battery condition.
Dead Battery	When there is no display and sounds; and screen is non-functional.	Replace batteries immediately. Supplied physical backup keys can be used to unlock the safe. Alternatively, use Type-C USB port as shown below to activate the safe.



Your Lockly has a **Type-C USB port** located at the right exterior of the Smart Safe. You may use a power bank to temporarily power up your safe. Once the screen lights up, enter your **Access Code** or scan a registered fingerprint to unlock Safe. Once unlocked, batteries should be replaced immediately.

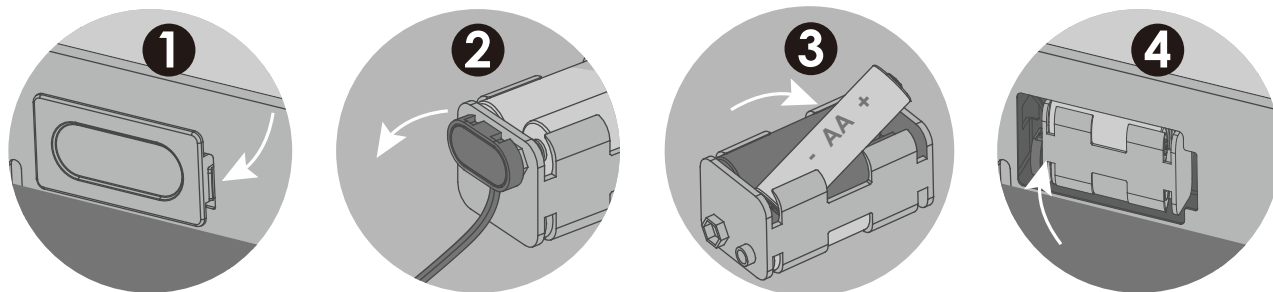
This Type-C USB port can be plugged in a DC 5V to provide continuous power supply for the safe. The installed battery will serve as backup power supply in case of power interruptions.

2.6 Changing The Battery

Under normal use, the Lockly battery will last up to a year. Please check battery levels **regularly** and change your batteries when the low battery notification is issued. For best practice, always use **new batteries** by a major brand.

Open the battery compartment cover and insert **four (4)** new **AA alkaline** batteries as shown.

- ❶ Press the snap to remove the battery cover.
- ❷ Carefully take out the battery holder and disconnect from the terminal.
Make sure you DO NOT PULL the connection cable.
- ❸ Remove and/or install new 4 x AA batteries according to +/- direction.
- ❹ Connect the battery holder to the terminal cable and return inside the battery box.
Return the battery cover.



- Make sure the batteries are oriented correctly by matching the orientation displayed.
- Replacing the batteries do not reset stored **Access Codes**.
- To see a list of recommended brands, please visit <http://Lockly.com/battery>



NOTICE

Whenever batteries are replaced, reconnecting Smart Safe to your smartphone app is required.

If you have not yet downloaded the app, visit: Lockly.com/app

3.1 Optional Installation

Installation is optional for your Lockly Smart Safe. It is suggested to choose a location within your home or office is that it discreet yet can be easily accessed when it is needed. Ideally, this safe could fit in a bedroom side table, closet or an office cabinet drawer.

If you wish to position the safe in open areas like top of the table, wall divider, a car or any place that you think there is a chance that it can be stolen, we have provided mounting screws and security cable that can be used to secure your safe.

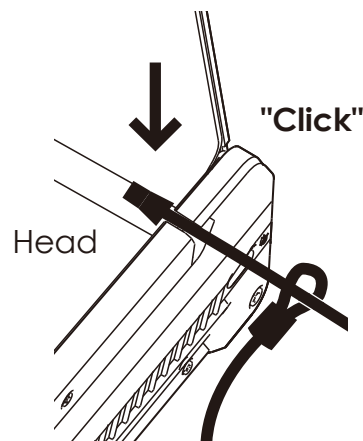
1. Wrap the cable head and tail around a fixed object.

① Length: 1100mm



2. Insert the cable head to the upper right groove buckle of the safe. When you hear a "click" sound, the rope installation is completed.

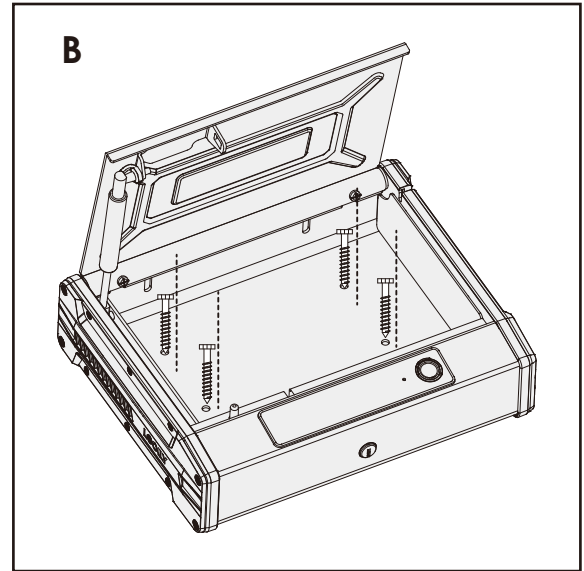
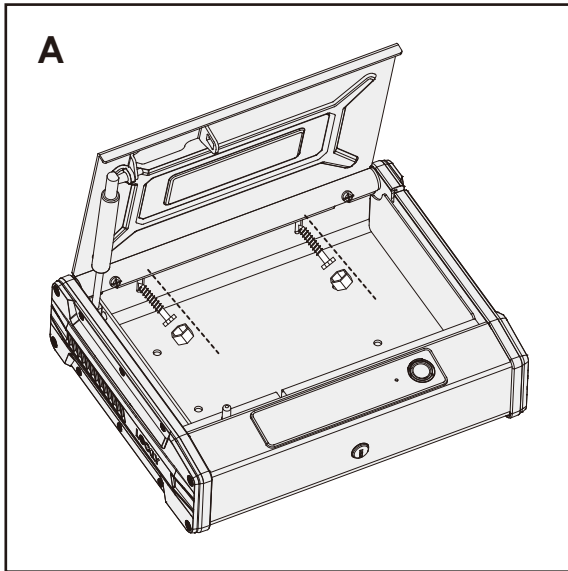
②



3.1 Optional Installation (Continued)

Lockly Smart Safe supports horizontal or vertical fixed installation on the wall or bottom plate, which is optional. Please select the appropriate fixing method according to your use scenario.

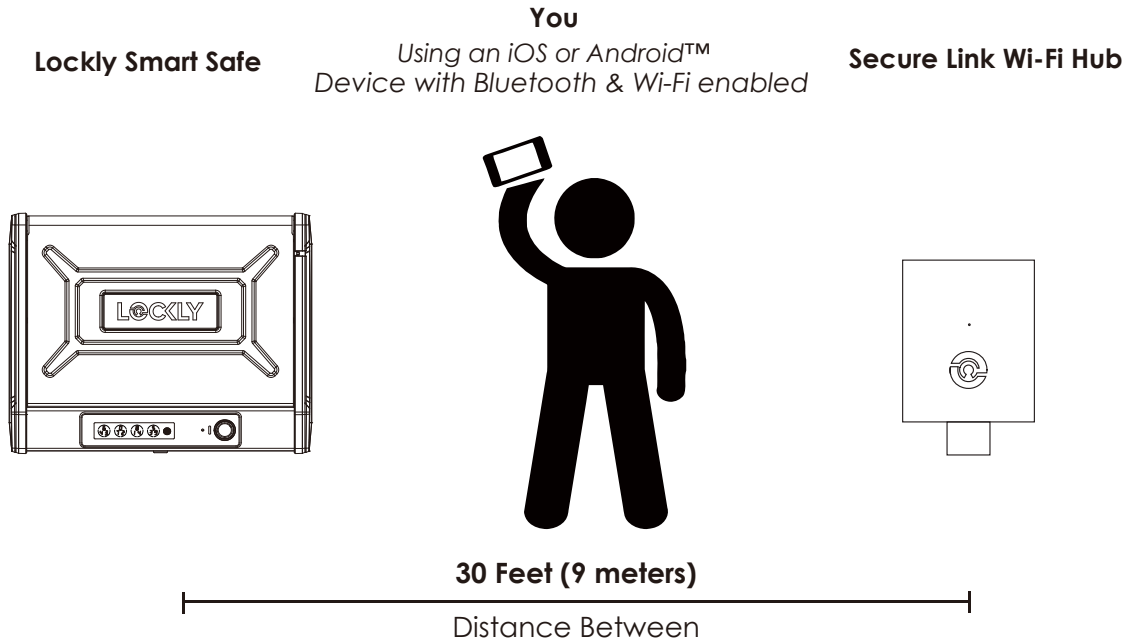
During installation, put Lockly Smart Safe in the installation position and mark the hole opening position with a pen. You need to use drilling tools when opening holes. Please take necessary safety precautions. After drilling, use the set screw in the accessory package to fix Lockly Smart Safe according to the following diagram.



3.2 Setting Up the Secure Link Wi-Fi Hub

To set up your Lockly Smart Safe, choose an appropriate location for the Secure Link Wi-fi Hub for optimum performance (see below). For optimum connectivity, it is recommended that the hub be no further than 30 feet (9 meters) away from the Safe.

During the setup process position yourself between the Safe and the Secure Link Wi-Fi Hub—ideally no more than 30 feet (9 meters) apart. Ensure your iOS or Android device has both Bluetooth and Wi-Fi enabled.



NOTICE

The Secure Link requires a strong wireless signal for optimal performance. Make sure the Secure Link will be installed in a location with a strong 2.4 Ghz wireless signal. Sometimes distances between Wi-Fi hub and Safe can vary due to circumstances. If you are having difficulty setting up optimal range of 30/ft or less, we're here to help. Call our customer care team: (669) 500 8835, or visit [Lockly.com/help](https://www.lockly.com/help) for suggestions and troubleshooting tips.

3.2 Setting Up the Secure Link Wi-Fi Hub (Continued)

Plug the Secure Link Wi-Fi Hub into the 5V 1A USB AC adapter and plug the AC adapter to your wall socket.



USA Outlet Shown

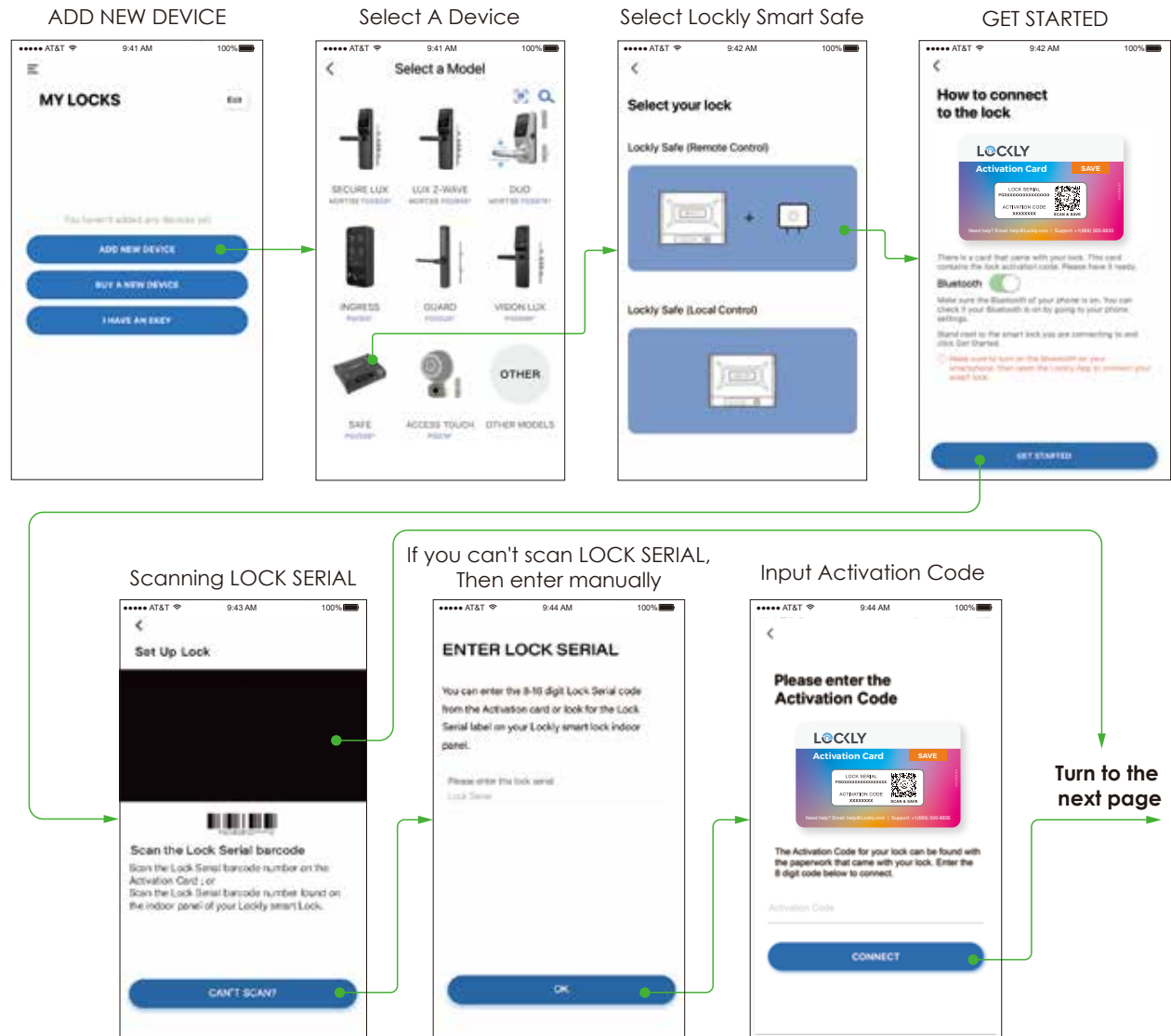
If your Secure Link is connected to your wireless network, the LED indicator is SOLID GREEN.



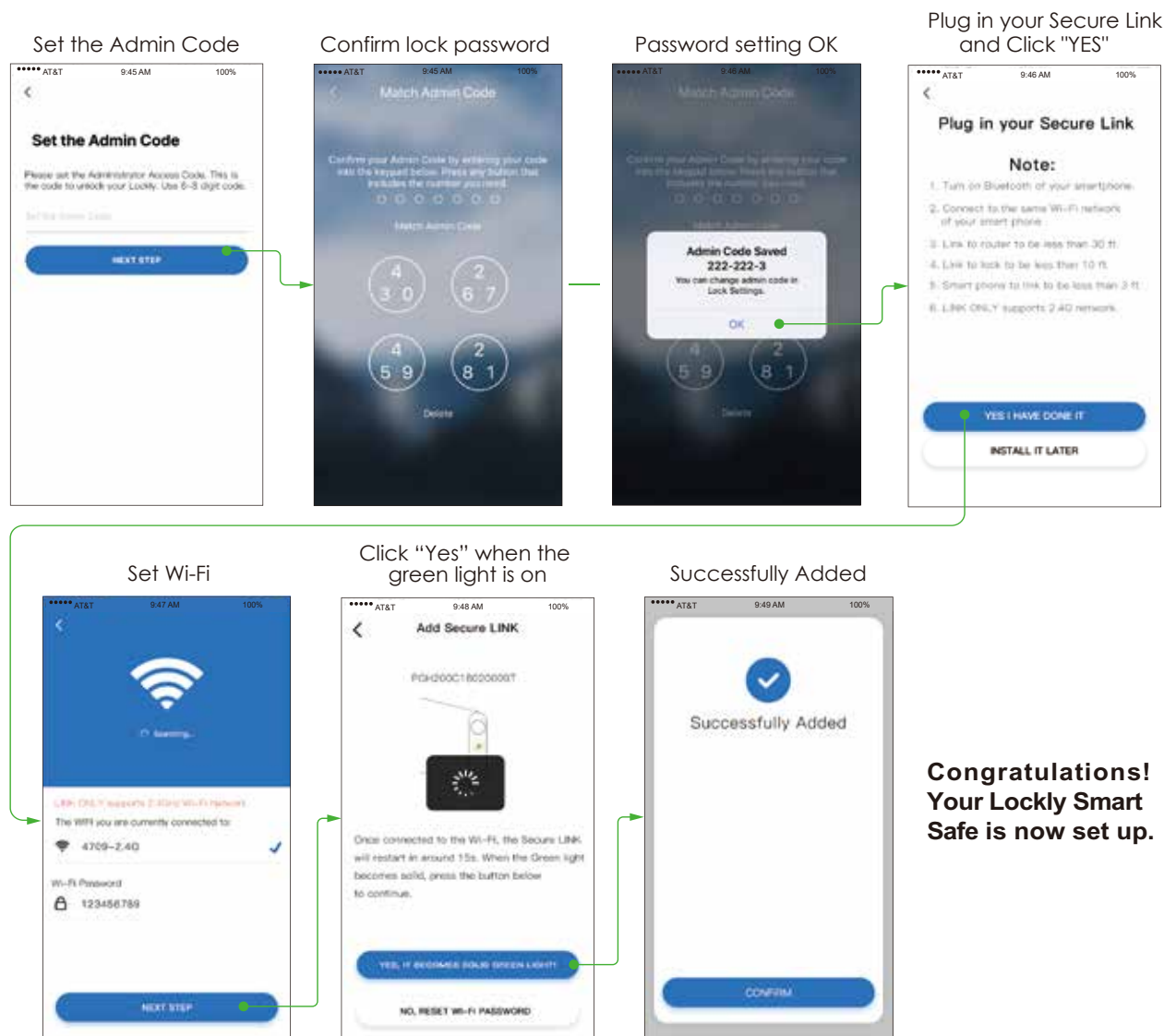
Once you have confirmed that your Secure Link Wi-Fi Hub is ready to connect to your safe, open the Lockly App from your smartphone. Make sure you are standing between the Wi-Fi hub and Lockly Smart Safe, then Add New Device and follow the on screen instructions.

3.3 Connecting Your Lockly Smart Safe

The App will take you through the following steps. You will need your activation card that is included in the box to proceed.



3.3 Connecting Your Lockly Smart Safe (Continued)



The display of the APP interface you see may be different from the printed interface. Lockly will continue to optimize the APP user experience. Please operate according to the actual interface of the APP.

4.1 Configuring Access



NOTICE

You must complete connecting your Lockly Smart Safe (Section 3.2-3.3) to manage your access codes. Follow the on screen instructions to complete the setup.



OK Button

How to Use the Keypad

There are a total of **five (5) buttons** on the keypad as shown in the example image above. The numbers in each button may differ from what is shown on your device than what is displayed here.

To enter your required digit, just simply press the circle where your number is shown. You do not need to press the actual number as anywhere within the circle will suffice.

The last button on the right is the **OK button**. You will be pressing this button when you are done entering your **Access Code**.



NOTICE The Default Access Code is **1 2 3 4 5 6**

There are different types of Access Codes that can be generated using the Lockly App. Each type of access code have different levels of permission you can select for your guests, tenants, deliveries, helpers, etc., Get the latest updates on access codes, visit: [www.support.lockly.com/faq/access codes/](http://www.support.lockly.com/faq/access%20codes/)

4.2 Adding an Access Code

Enter the App Access Management settings then tap **"Add New User"**. Select the type of user you wish to add access, **"Trusted User"**, **"Guests"**, **"Admin"**. For example, select **Trusted User**, enter the **user's name** and **set the Access Code**. Re-enter the access PIN code, then tap **"Confirm"** to successfully add the new access code.

An access code is a combination of 6 to 8 digits. Using the Lockly app, the Administrator can set up and assign up to **37 free access PIN codes** or up to 100 access codes through Lockly/OS**

Default access code **1 2 3 4 5 6** becomes invalid once an administrator access code is setup.

4.3 Checking/Deleting an Access Code

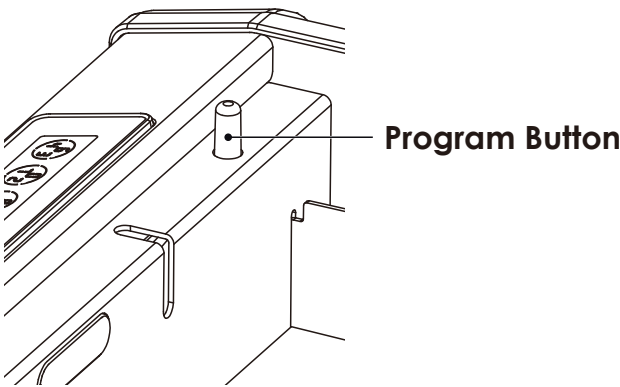
Access codes can only be deleted through the App. Enter the App Access Management and you can view all the issued access code users. Tap the access code user you wish to be deleted. Check access code and user name is correct, then tap **"Delete User"** to complete deleting the user access code.



The default access code 123456 can not be deleted until a new access code has been setup. Immediately setup a new access code and delete the default access code for your security.

**Lockly\OS is premium paid subscription recommended for property management or for homes and businesses with multiple Lockly devices.

4.4 Entering Programming Mode



To enter **Programming Mode**, open the Smart Safe. The **programming button** is located on the rear left interior.

Quickly press the **Program Button** twice to enter programming mode.

To end **Programming Mode**, press the **Program button** anytime. **Programming Mode** will automatically exit if the keypad is inactive for more than thirty (30) seconds.

4.5 Restore Factory Settings

Number		Mode
1	BL	Bluetooth Pairing
2	RE	Restore Factory Settings

If you need to restore to factor settings, you must have your Activation Code available. The Activation Code can be found on the Activation Code Card that came with your Lockly Smart Safe.

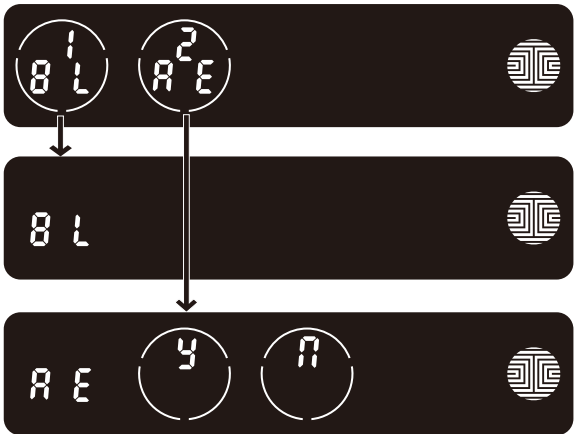
See below which Reset procedure applies for you:

Never Connected to App

Enter **Programming Mode**, press **RE** (Restore Factory Settings) and select **Y** to perform factory reset. Once the Lockly Smart Safe has been reset, all the data previously stored will be deleted.

Connected to App

In the App, go to Settings > Reset and Pairing > Perform Factory Reset. The smart safe will restart and reset. After reset, you'll need the Activation Code to reconnect the App.



4.6 Pairing to a New Mobile Device

Pair with Bluetooth

If you are pairing a new device or have performed a factory reset in the APP, you can directly refer to **Section 3.3**. Your Lockly Smart Safe can be Bluetooth paired without entering Programming Mode. Otherwise please follow the steps below to pair with Bluetooth.

While in Programming Mode, select “**BL**” to pair a new smart phone. If you are not in Programming Mode, please see **Section 4.4** to enter **Programming Mode**.

After pressing “**BL**”, the BL icon will flash and you will here two short beeps. Lockly Smart Safe will wait for the new device to pair, please refer to **Section 3.3** to reconnect Your Lockly Smart Safe.

You will hear long beep and the green light will be on if the pairing is successful. You will here 3 short beeps and the red light will be on if pairing is unsuccessful. You will need to re-enter the **programming mode**, then Bluetooth pairing mode “**BL**” to pair the device.

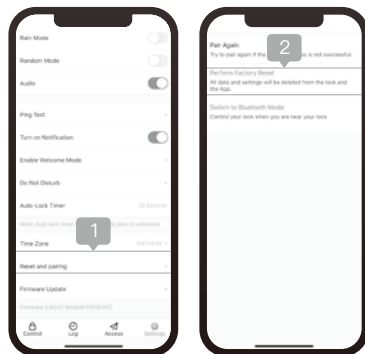


4.6 Pairing to a New Mobile Device (Continued)

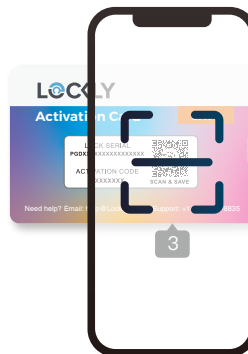
PAIR LOCKLY TO APP

To pair your Smart Safe to a new mobile phone, download the Lockly app on your new mobile phone then use the same account to login to your Lockly App on the new mobile device. If you're pairing your Lockly to a new Lockly app account, follow the steps below:

1. On the old Lockly app account, go to Settings > Reset and pairing > Perform Factory Reset.
2. Download, register and log in to the new Lockly app account.
3. You will need to scan the **ACTIVATION CODE*** that comes with the lock to setup to a new account.



Old Lockly app account



Scan to new Lockly app account



Welcome Card



IMPORTANT

If you cannot remove your Lockly from the old account, please contact Lockly support (669) 500-8835 or email : help@lockly.com

4.7 Adding a Fingerprint

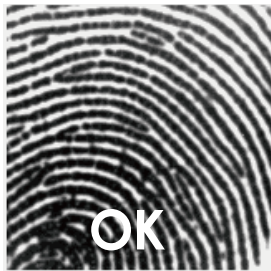
In this section, you will learn how to register a fingerprint to your new safe.

We are using an advanced biometric sensor, providing the most secure fingerprint authentication. For security reasons, Lockly will only accept fingerprint patterns that consist of cross intersection points. Patterns with no cross intersection points will not be acceptable.

Please check your fingers before registration to make sure the finger you want to register will be acceptable by our system. Otherwise, use an alternative finger to ensure successful registration.

The following examples show which types of fingerprint patterns will be acceptable. It is highly recommended to enroll at least one finger from each hand in case the hand you are using is unavailable, such as, in instances like if you are holding items in that hand or have sustained an injury.

**Fingerprint Pattern with
Cross Intersection Lines**



**Concentric or Parallel Pattern
with no Cross Intersection Lines**



**Fingerprint with Scars or
Worn Out Ridges**



4.7 Adding a Fingerprint (Continued)



NOTICE

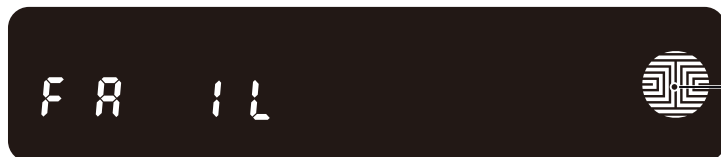
Please make sure your fingers are clean from dirt and oils before scanning your fingerprint. Make sure the sensor is also clean by taking a soft cloth and wiping the surface.

We are using an advanced biometric sensor, providing the most secure fingerprint authentication. Your Smart Safe can register up to ninety-nine (99) fingerprints. Use the Lockly app to add fingerprints.

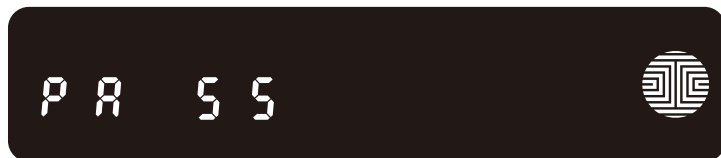
Scan your finger by lightly placing your designated finger on the sensor until you hear a beep. Lift your finger and repeat the process slowly until the digit “12” shown on the screen becomes “1”. If you have successfully scanned and registered your fingerprint, you will hear a long beep, and the LED Indicator will **flash green**.

PASS will show on the keypad and press **OK** to exit. If you did not successfully register your fingerprint, **FAIL** will show on the keypad. If **FAIL** is displayed, use APP to add fingerprint again.

For instructions on **scanning an optimal fingerprint**, please proceed to **Section 4.7**.

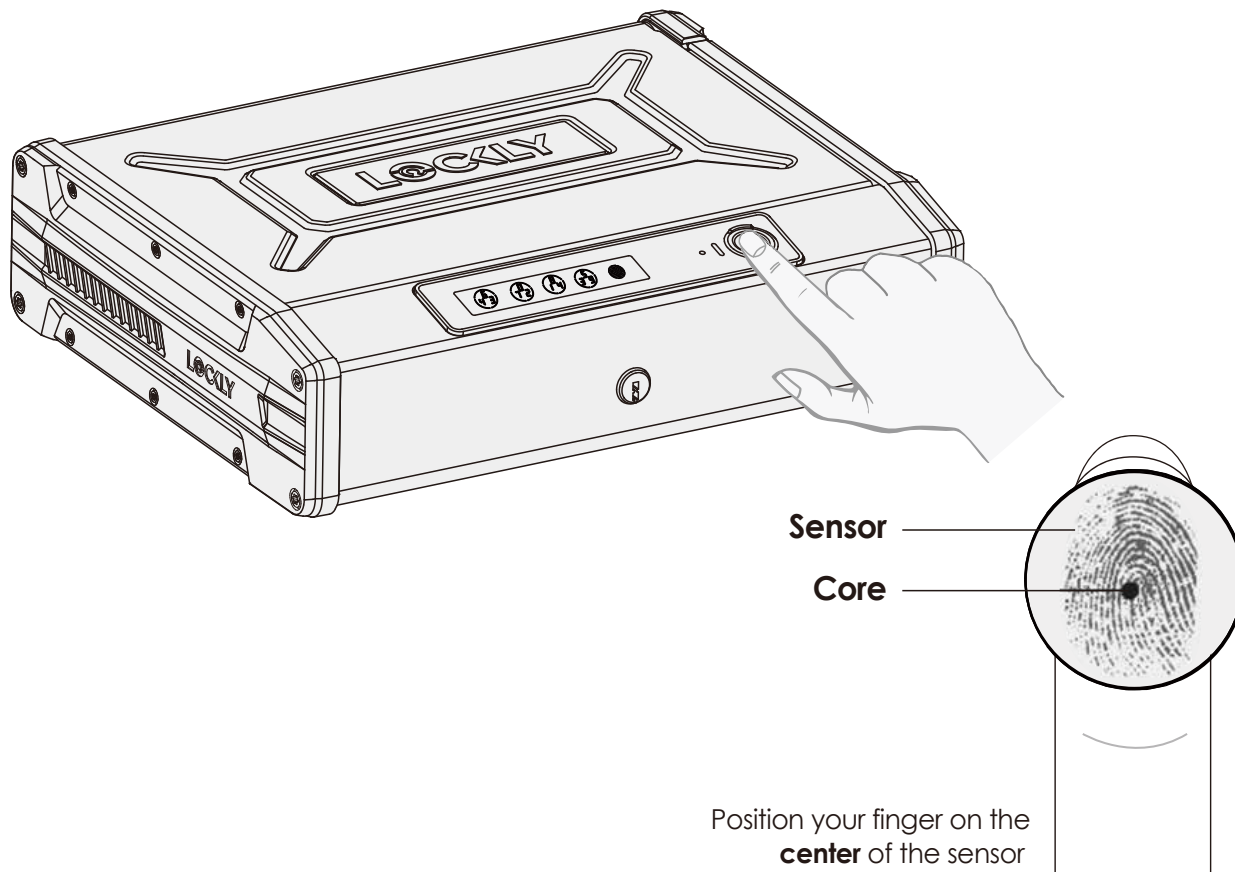


OK Button



4.8 Fingerprint Scanning Directions

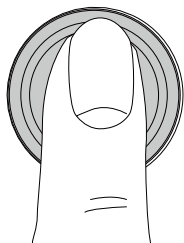
The **fingerprint sensor** equipped in your Smart Safe is loaded with powerful fingerprint algorithms to extract quality features from fingers, even in poor conditions. Placing your finger on the sensor correctly helps consistency in fingerprint recognition. The following directions and tips will guide you on how to scan an optimal fingerprint image.



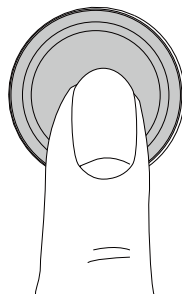
4.8 Fingerprint Scanning Directions (Continued)

Top View

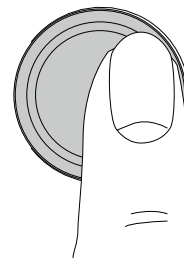
OK



X

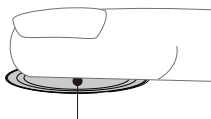


X



Side View

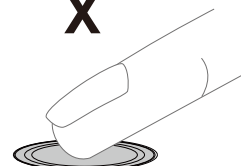
OK



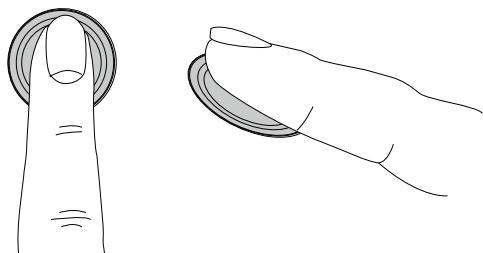
X



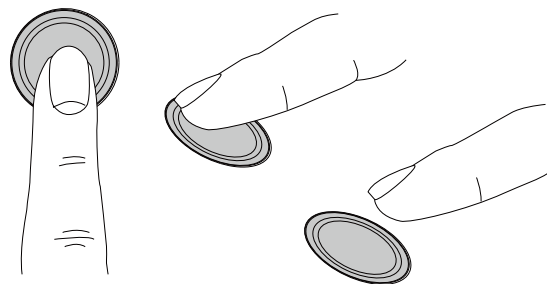
X



○ Correct



○ Incorrect



4.9 Fingerprint Scanning Tips & Troubleshoot

Tips for Fingerprint Enrollment and Recognition

- Place your finger to completely cover the sensor with maximum contact surface.
- Position the center of your finger (core) to the center of the sensor.
- Hold your finger still for more than a second until you hear a beep.
- Scan a finger that is clean and free from dirt.
- Children ages 12 and under are not recommended to use fingerprint access due to the constant changes of their fingers during growth.
- Elderly with fading fingerprints may have difficulty in recognition.
- If your finger has a cut, scar, or cracked skin due to dryness, try another finger.
- If your fingerprint reader is having issues recognizing your fingerprint to unlock due to varying physical and weather conditions such as moist, sweaty, cold or dry; please add an extra scanning of the finger in such condition. This will improve the fingerprint reader's speed and recognition.

Troubleshooting Fingerprints

In case of poor fingerprint conditions

- If wet - wipe excess moisture from finger before scanning
- If dirty - wipe stains and dirt off from finger before scanning
- Make sure the sensor is clean from dirt or smudges - wipe sensor with soft cloth regularly

For more troubleshooting help, visit <http://Lockly.com/help>

4.10 Shine Mode

Lockly touchscreen keypad brightness was designed for optimum battery life. However, some users may need to adjust the brightness to their convenience to enter access codes.



Swipe your fingers across the keypad to light up to its normal brightness. To adjust brightness, **long press the first button from the left for 3 seconds.**

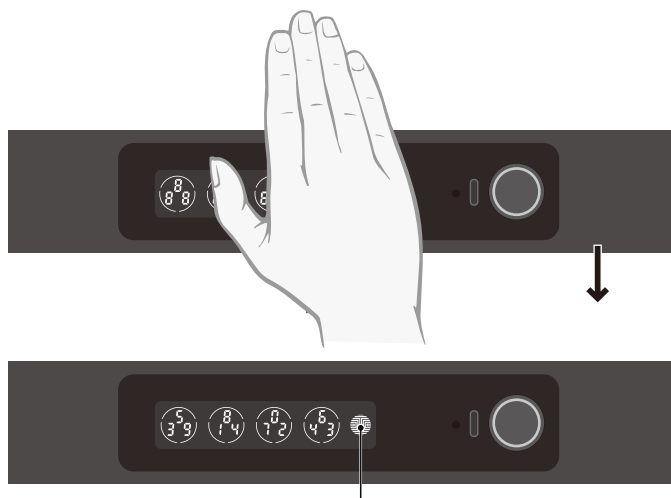


NOTICE

The touchscreen keypad will automatically return to normal brightness after the screen dimmed.

5.1 Unlocking with Access Codes

Smart Safe can be unlocked using multiple ways - via your stored **Access Code**, **registered fingerprint**, smartphone with **Bluetooth**, or **physical key** supplied with your safe.



Slide your hand across the screen to activate the keypad.

Enter your **6 to 8 digit Access Code** followed by the **OK** button. Press **OK** anytime to reset if you entered the wrong digit.

If the **Access Code** entered is correct, the Safe will unlock. If the **Access Code** entered is incorrect, Lockly will beep twice.

OK Button



NOTICE

Three consecutive wrong attempts will put Lockly in "Safe Mode". (See Section 5.6)

If you need to lock the Safe, close and press the top cover.

You may toggle between two types of keypad displays to enter your **Access Code**. The **fixed** digit version and the **PIN Genie** version (Recommended). Press and hold the **OK Button** for 3 seconds to toggle back and forth between the two keypads.

(Sample display shown only)

PIN Genie

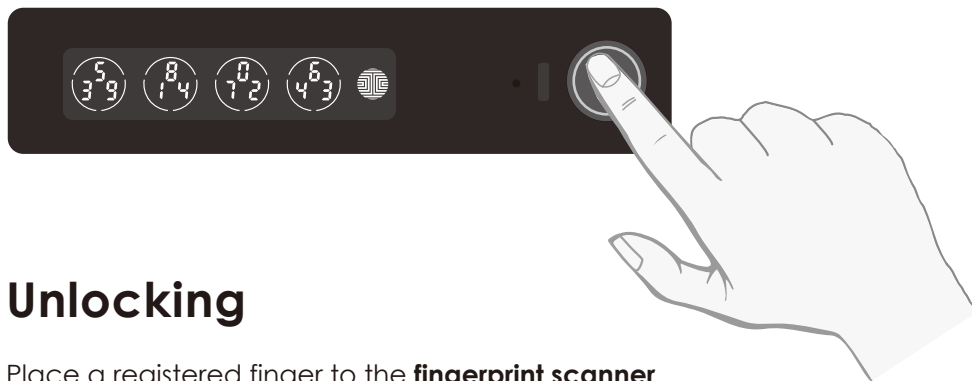


Fixed Digit



Hold OK (3 sec)

5.2 Unlocking with Fingerprint



Unlocking

Place a registered finger to the **fingerprint scanner** located on the **exterior side** of the Safe.

To register a **fingerprint**, please see **Section 4.7**.

If your fingerprint is **registered** and acknowledged, you will hear a “beep” sound, Green LED will light up on the fingerprint scanner and Smart Safe will pop and open.

If you see a **Red LED**, it means your fingerprint is not recognized. Try again or use another registered finger.

For best fingerprint scanning practices, see **Section 4.8**.

5.3 Unlocking Lockly with App

You must have the Lockly iOS or Android™ app installed in order to unlock with smartphone.

Please download the app by visiting the link below or search “Lockly” from the correct app store.

**Scan or visit
[Lockly.com/app](https://lockly.com/app)**



5.4 Unlock with QR Code

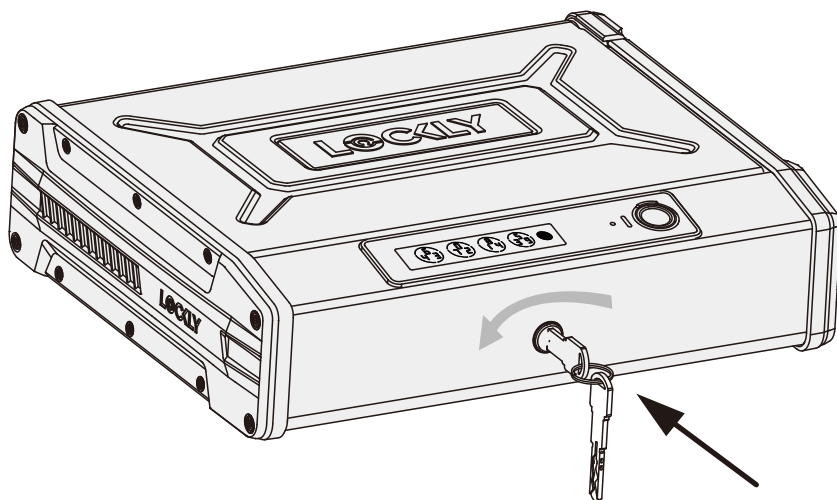
If you have multiple Locky devices, you can use the Lockly App code scanner to unlock.

A QR code sticker (blue color) comes together with your safe. Open the Lockly app and scan it to unlock.

You may also generate a unique QR code via Lockly app for your smart safe. You can generate QR code, print according to the size you want and stick it next to your safe.

5.5 Unlocking with Physical Key

Exterior View




NOTICE Please keep physical key separately and do not put inside the safe.

To **unlock** your Safe using the **physical key (included)**, insert your key and turn counterclockwise to unlock the Safe.

5.6 Safe Mode - Overview

Lockly will enter **Safe Mode** when three (3) consecutive wrong **Access Codes** are entered within 5 minutes. When in **Safe Mode**, the safe status icon  will start to flash.

To disable **Safe Mode**, you must unlock the Safe using the correct fingerprint or enter the correct **Access Code** twice in a row. Activate the keypad by pressing and holding  for 3 seconds.

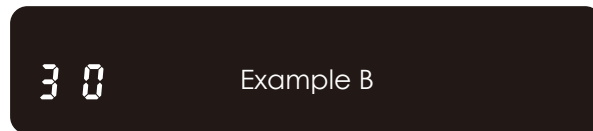
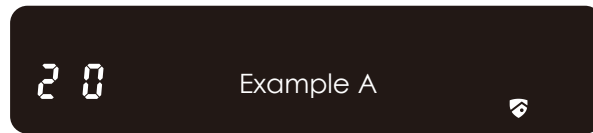
Once the screen is activated, enter the correct **Access Code** carefully twice, pressing  after every time.

If you enter the wrong code, the keypad will then be disabled for **10 minutes**.



Countdown Prompt
(Displayed in Minutes)

Will start with 10 and
countdown until 0.



You will see a “10” on the screen, notifying the number of minutes that the keypad is disabled for. After **10 minutes**, you may attempt to enter the correct **Access Code** to unlock the Safe. After the second incorrect attempt to unlock the Safe with the wrong **Access Code**, Lockly will disable the keypad for **20 minutes**, displaying a “20” on the screen. After the third wrong attempt to unlock the Safe with the correct **Access Code**, the screen will be disabled for **30 minutes**. (Example A and Example B above).



NOTICE

In order to conserve power, the countdown prompt will only be displayed for 3 seconds. You can reactivate the screen by sliding your hand across the screen.

5.7 Disabling Safe Mode

There are four (4) ways to disable **Safe Mode**.

Option 1 - Entering Correct Access Code

Activate the keypad by pressing and holding  for 3 seconds.
Enter the correct **Access Code** twice (2) when the keypad is available, pressing  after every time the **Access Code** is entered.

Option 2 - Lockly App

Use the app that is synced to your Lockly Smart Safe to disable **Safe Mode**. If you have not downloaded the app to use with your Safe, you won't be able to use this option to disable **Safe Mode**.

Option 3 - Physical Key

There is a pair of keys included with your new Safe. You may use the keys to manually unlock the Safe. To learn how to use your physical keys, see **Section 5.5**.

Option 4 - Registered Fingerprint

Use any registered fingerprint to reactivate the keypad. The Safe will unlock and reactivate the keypad once a registered fingerprint is used.



NOTICE

While in **Safe Mode**, the keypad will not lit up when you are using your **Physical Key**.

6.1 Offline Access Code™ (OAC)


The **Offline Access Code™ (OAC)** is a unique feature of our Smart Safe. It allows you to grant access to guests remotely without guests needing to download the app.

To use the **OAC** feature, make sure you download the Lockly app for iOS or Android™ first, and sync your Smart Safe to your mobile device. OAC can only be issued by the administrative owner of the safe.

From there, you can then issue an **Offline Access Code™** within the app.

Go to “**Access**” and choose **Offline Access Code User**, then select Add **Offline Access Code™ (OAC)**” and follow on screen instructions to generate your **Offline Access Code™**.

Understanding Offline Access Code™ (OAC)

OAC are issued to the guest by asking them to enter 4-12 digit number after a double - click on the . Your Lockly randomly generates the **Offline Access Code™** which can be shared to your guests together with the instructions generated using the Lockly app.

After a double-click on the , touchscreen will display numbers on **Fixed Digit** mode, then guest can enter the **Offline Access Code™**.



6.2 eBadge

An eBadge is a unique code that can be issued to another user giving them door access for a specific reoccurring time frame or a valid period of time. It requires them to download the free Lockly app and access can only be gained through the app (not the fingerprint reader or keypad).

6.3 Smart-Sync

A unique feature of Lockly Smart Safe, is a synchronized opening with your Lockly Smart Lock. With a specifically assigned set of access code or fingerprint, the safe will open at the same time you unlock your smart lock. Make sure you always have the latest version of the Lockly app to have this feature working. Setup this feature on your Lockly App.

6.4 Sub-Admin Access

Sub-Admin Access can be created to grant access for others to be able to control your Safe and grant access to others via Bluetooth when within range of your Lockly Smart Safe. The sub-admin permission can be setup through the Lockly App then **Add A New User**.

You can select the Validity Period and User Permissions of the sub-admin.

The Sub-Admin access is ideal for long term property leasing and Airbnb tenants.

6.5 Duress Finger Alert

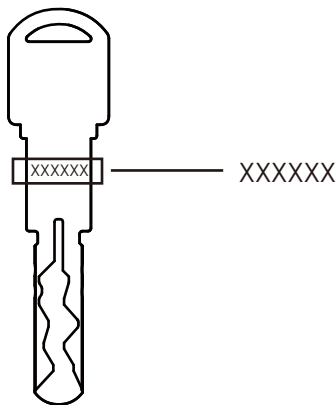
Assign a specific finger that will automatically send duress notifications. When this finger is used, the app will send notification via email and text message to your pre-selected contacts. This safety feature can be used when you are being robbed, held as hostage or forced to open the safe. Setup this feature on your Lockly app.

6.6 Twin-Credential Opening Capability

Twin-Credential opening allows you to enter an access code + fingerprint or a fingerprint + fingerprint to open the smart safe. When this feature is setup, it will require two administrators to verify by their fingerprints or passwords within a 60-second time frame to open the safe. This feature can be setup through the Lockly App.

7.1 Key Duplication

The physical key included in your Safe can only be duplicated through the manufacturer. **It cannot be replaced or duplicated** like regular keys. There is a string of codes on the physical key. Please keep this code properly. If the physical key is lost, please contact Lockly customer service.



8.1 Important Notes

Physical Keys

Even though you have your **fingerprints** registered and **Access Codes** stored, it's always best practice to carry your physical keys with you at all times in case for any reason your Safe falls into **Safe Mode**.

Activation Code

You may find an **Activation Code Card** with an **Activation Code** included in your package. It is very crucial that you do not lose this card. Please store this card safely as you will need the default **Activation Code** on that card to **master reset** your Safe in case, for any reason, you have lost the phone paired to Lockly and also forgot your **Access Code**.

Troubleshooting

Please visit <http://Lockly.com/help> for troubleshooting and the most frequently asked questions and answers.

9.1 Cleaning

Making sure your Lockly is clean is best practice to ensure optimal product use. Follow the DO and DON'Ts below.

DO

- Rinse the touchscreen with warm water prior to cleaning.
- Use the application of soap with a damp, lukewarm cloth.
- Air dry or wipe dry with a soft microfiber cloth to avoid scratches.

DON'T

- Don't use abrasives, high alkaline cleaners, or gasoline to clean your safe.
- Don't apply cleaning detergent directly in sunlight or at high temperatures.
- Don't leave cleaning detergent on the display keypad for long periods of time - wash immediately.
- Don't use scrapers, squeegees, or razors.
- Please make sure that no water flows into the product.

10.1 Safety Precautions

Please read all instructions carefully. Remind all Lockly users of the safety precautions.

Read the following instructions for your own safety

Do not attempt to disassemble the Smart Safe by yourself. It can cause product damage, void warranty, and cause injuries.

Do not use any inappropriate tools that can cause damages or malfunction to your safe.

Always make sure your Safe is securely closed and locked whenever you leave your house to prevent unwanted access of your valuables.

Please keep your Access Codes safe. Check your settings regularly to ensure Access Codes have not been changed without your knowledge.

Always dispose of used batteries according to your local laws. **DO NOT BURN.**



NOTICE

Unauthorized changes and modifications may void your product warranty. If you have questions or any problems while using your Lockly, contact our customer service department at help@Lockly.com or visit <http://Lockly.com/help> for technical assistance.

FCC Warning :

This device complies with Part 15 of the FCC Rules. Operation is subject to the following two conditions: (1) This device may not cause harmful interference, and (2) this device must accept any interference received, including interference that may cause undesired operation.

NOTE 1: This equipment has been tested and found to comply with the limits for a Class B digital device, pursuant to part 15 of the FCC Rules. These limits are designed to provide reasonable protection against harmful interference in a residential installation. This equipment generates, uses and can radiate radio frequency energy and, if not installed and used in accordance with the instructions, may cause harmful interference to radio communications. However, there is no guarantee that interference will not occur in a particular installation. If this equipment does cause harmful interference to radio or television reception, which can be determined by turning the equipment off and on, the user is encouraged to try to correct the interference by one or more of the following measures:

- Reorient or relocate the receiving antenna.
- Increase the separation between the equipment and receiver.
- Connect the equipment into an outlet on a circuit different from that to which the receiver is connected.
- Consult the dealer or an experienced radio/TV technician for help.

NOTE 2: Any changes or modifications to this unit not expressly approved by the party responsible for compliance could void the user's authority to operate the equipment.

FCC Radiation Exposure Statement

This equipment complies with FCC radiation exposure limits set forth for an uncontrolled environment. It should be installed and operated with minimum distance 20cm between the radiator & your body.

IC WARNING

This device contains licence-exempt transmitter(s) that comply with Innovation, Science and Economic Development Canada's licence-exempt RSS(s). Operation is subject to the following two conditions:

- (1) This device may not cause interference.
- (2) This device must accept any interference, including interference that may cause undesired operation of the device.

L'émetteur/récepteur exempt de licence contenu dans le présent appareil est conforme aux CNR d'Innovation, Sciences et Développement économique Canada applicables aux appareils radio exempts de licence. L'exploitation est autorisée aux deux conditions suivantes:

1. L'appareil ne doit pas produire de brouillage;
2. L'appareil doit accepter tout brouillage radioélectrique subi, même si le brouillage est susceptible d'en compromettre le fonctionnement.

IC Radiation Exposure Statement

This equipment meets the exemption from the routine evaluation limits in section 2.5 of RSS-102. It should be installed and operated with a minimum distance of 20cm between the radiator and any part of your body.

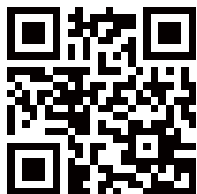
Cet équipement est conforme à l'exemption des limites d'évaluation habituelle de la section 2.5 de la norme RSS-102. Il doit être installé et utilisé à une distance minimale de 20 cm entre le radiateur et toute partie de votre corps.



WARNING: This product can expose you to chemicals including Lead, which is known to the State of California to cause cancer. For more information go to www.P65Warnings.ca.gov.

LOCKLY SMART SAFE

Enjoy the freedom™



We're here to help!
help@Lockly.com
<https://Lockly.com/help>

To ensure you have access to the most updated and newly added features of your Lockly, please visit: **www.Lockly.com/newfeatures**

For digital versions and instructional videos, please visit the following link:

<http://Lockly.com/help>

© Copyright 2023 Lockly All rights reserved

US Patent No. US 9,881,146 B2 | US Patent No. US 9,853,815 B2 | US Patent No. US 9,875,350 B2 | US Patent No. US 9,665,706 B2 | US Patent No. US 11,010,463 B2 | US Patent Application No.29/832,410 | AU Patent No. 2013403169 | AU Patent No. 2014391959 | AU Patent No. 2016412123 | UK Patent No. EP3059689B1 | UK Patent No. EP3176722B1

The Bluetooth® word mark and logos are registered trademarks owned by the Bluetooth SIG, Inc. , and any use of such marks by Lockly is under license. Other trademarks and trade names are those of their respective owners. Google, Android, Google Play and Google Home are trademarks of Google LLC., Amazon, Alexa and all related logos are trademarks of Amazon.com, Inc., or its affiliates.