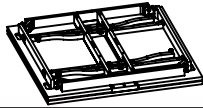







## PREPARATION FOR ASSEMBLY

- \* Before beginning assembly of product, make sure all parts are present and in good condition.
- \* Compare parts with part content list and hardware content list. If any part is missing or damaged, do not attempt to assemble the product.
- \* Estimated assembly time: 20 minutes.
- \* Tools required for assembly: Allen key (included) and screw driver (not included).

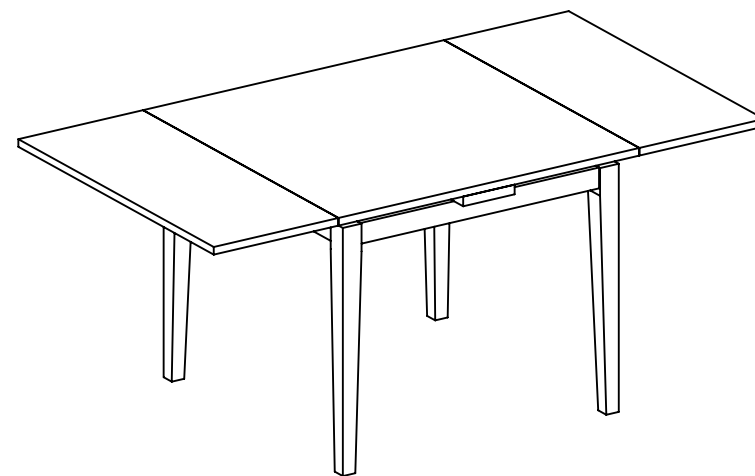
### Part List and Hardware List

PIECE	DESCRIPTION	PICTURE	QUANTITY
A	Top		1X
B	Legs		4X
HW1	Socket Bolts 8x1.25x55mm		8X
HW2	Split Lock Washer 8mm		8X
HW3	Flat Washer 8mm		8X
HW4	Allen Key		1X

 **SAFAVIEH**  
FURNITURE

Model #: DTB1001

Product Dimensions: 38-69.5" W x 38" D x 30.3"H



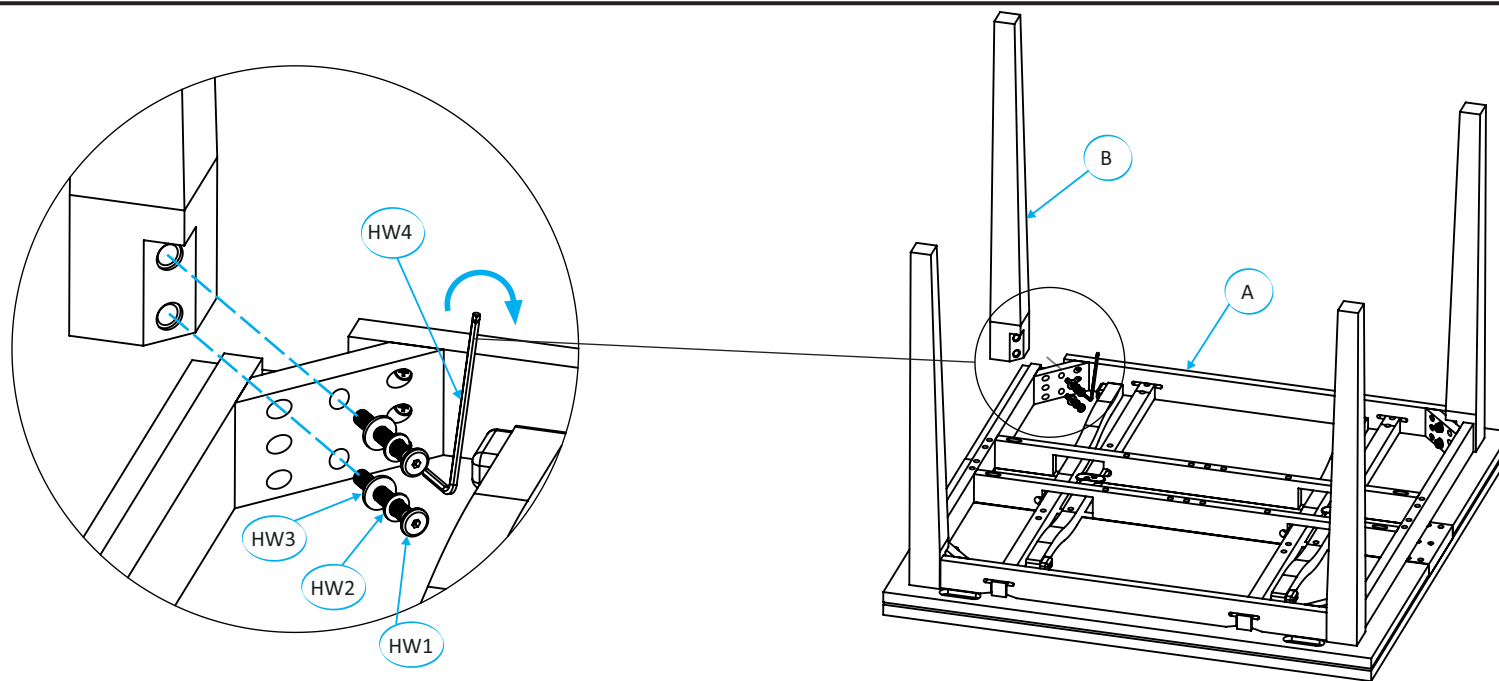
Weight capacity: 40 LBS

Warning: Do not stand on Table

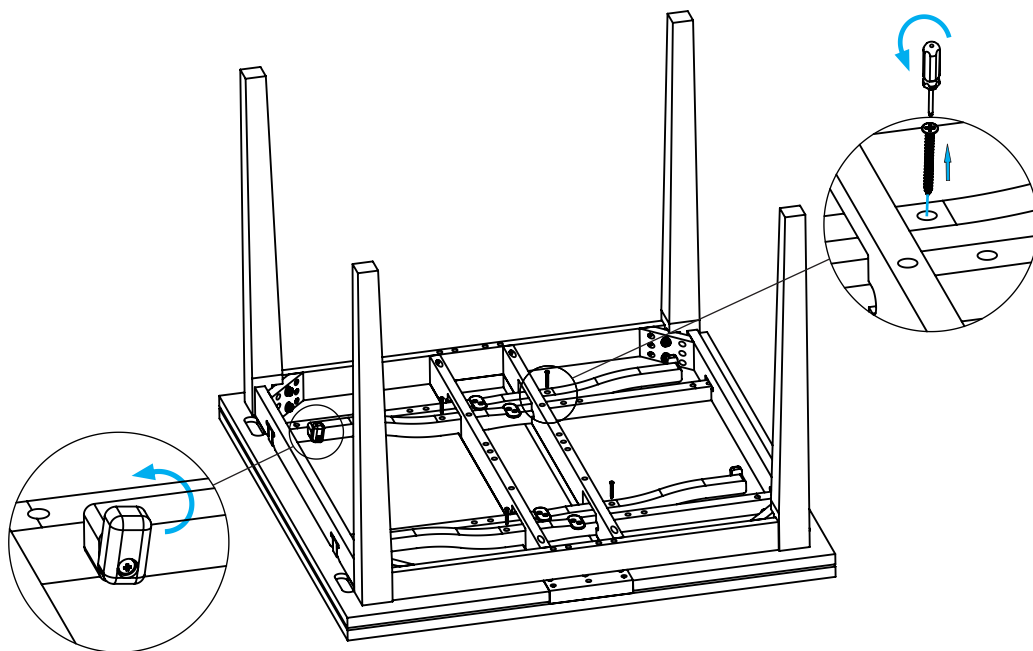
Warning: Do not over torque Bolts

## NOTICE FOR CARE & MAINTENANCE

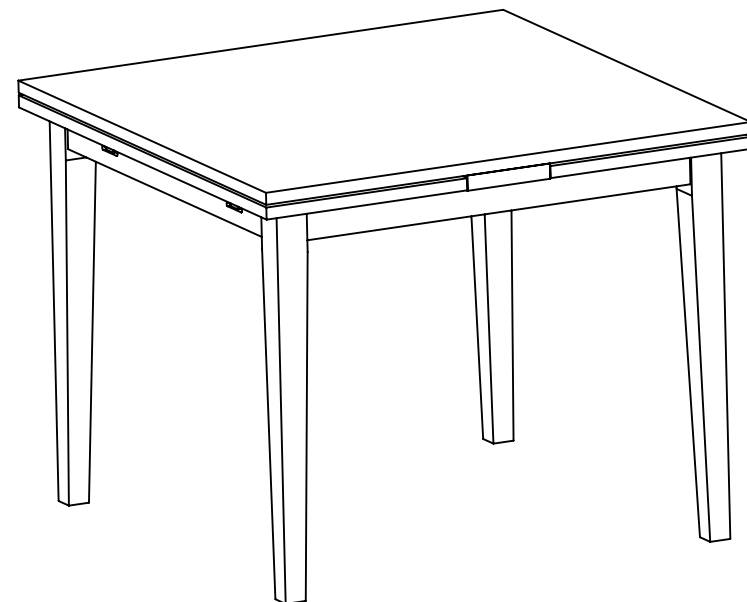
- \* This item should be assembled on a soft surface to prevent scratching the finish during assembly.
- \* This item may require periodic tightening.
- \* If you are having difficulty, our friendly Customer Care team is always here to help. Please email [customersupport@safavieh.com](mailto:customersupport@safavieh.com)



**STEP1:** Attach four legs of the table as illustrated in picture. Make sure to apply all the bolts into the holes properly before tightening.

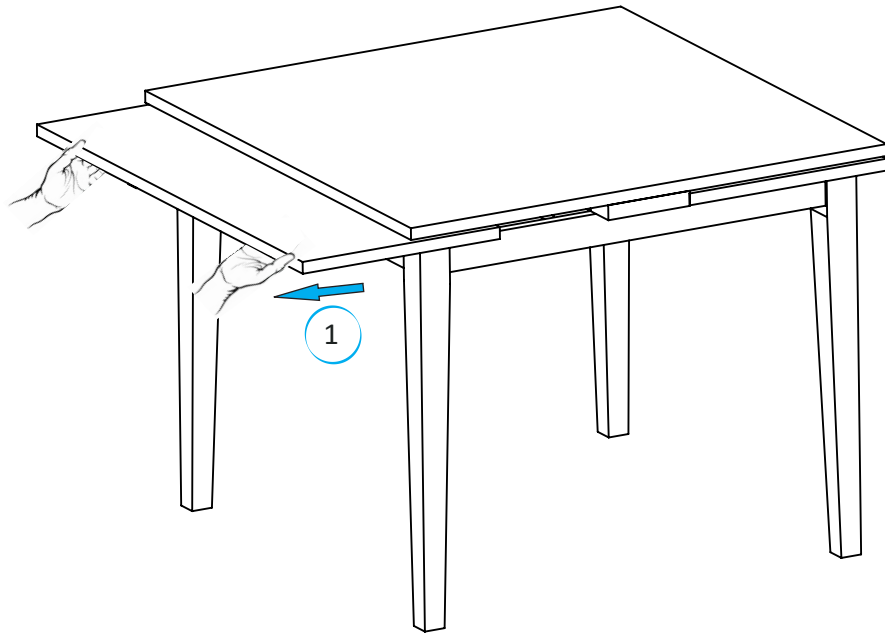


**STEP2:** Set up as illustrated in picture.

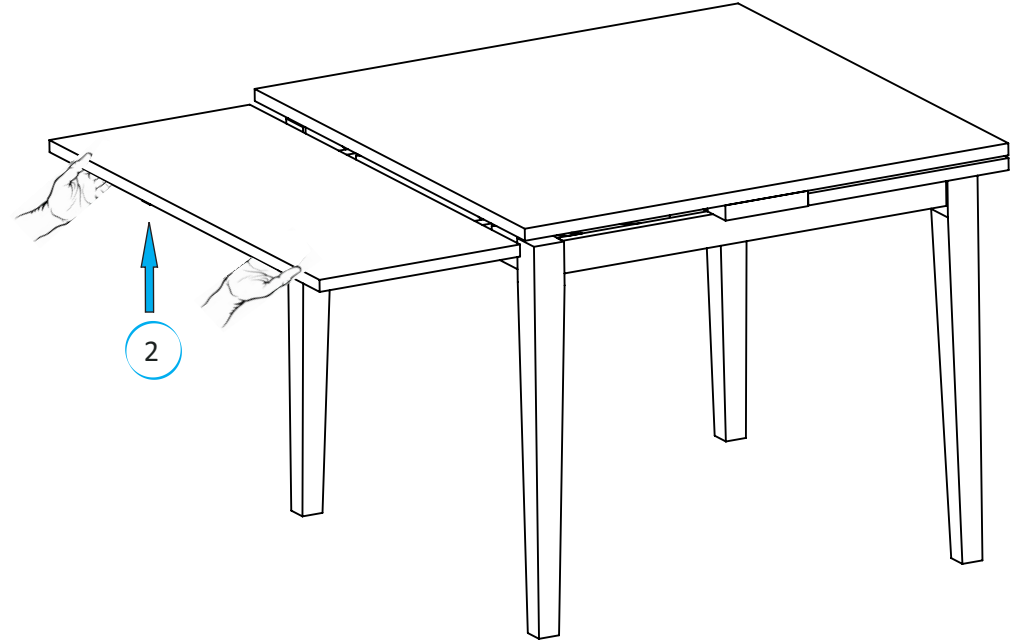


**STEP3:** Assembly completed

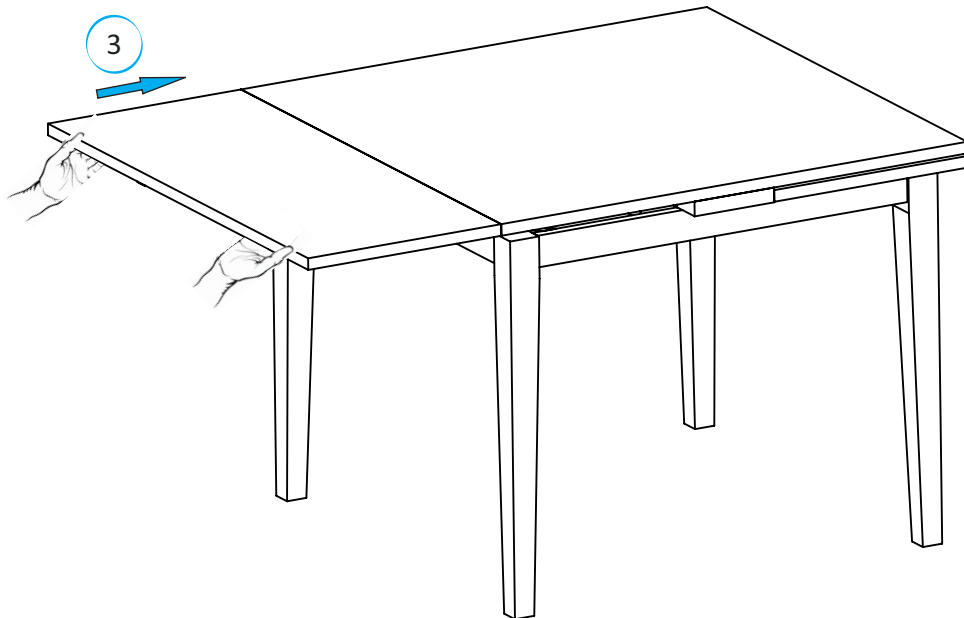
LEAF OPENNING EXTENSION INSTRUCTION



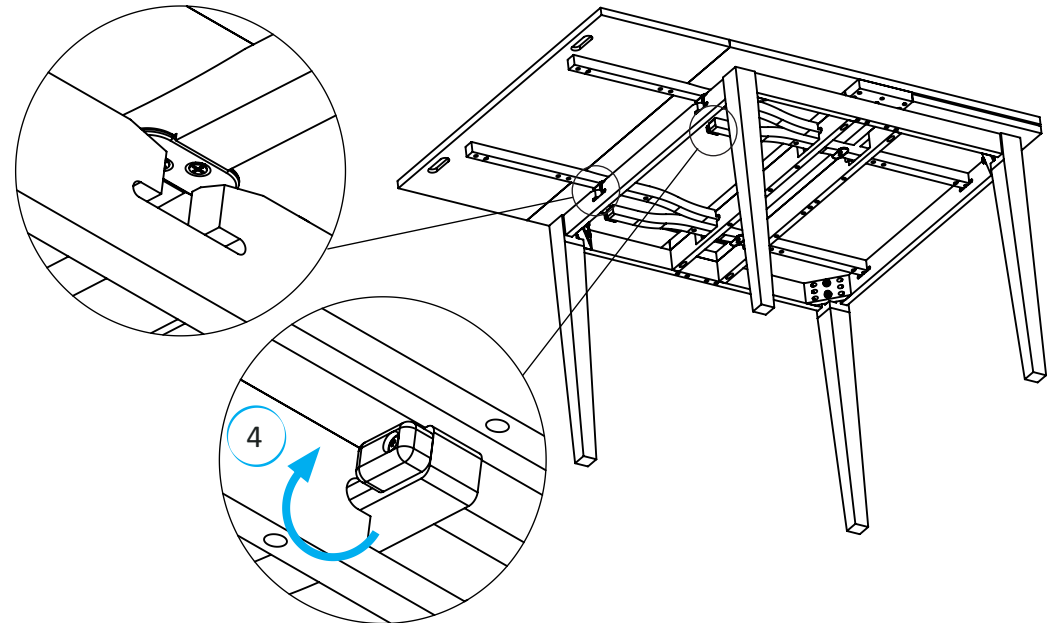
LEAF OPENNING EXTENSION INSTRUCTION



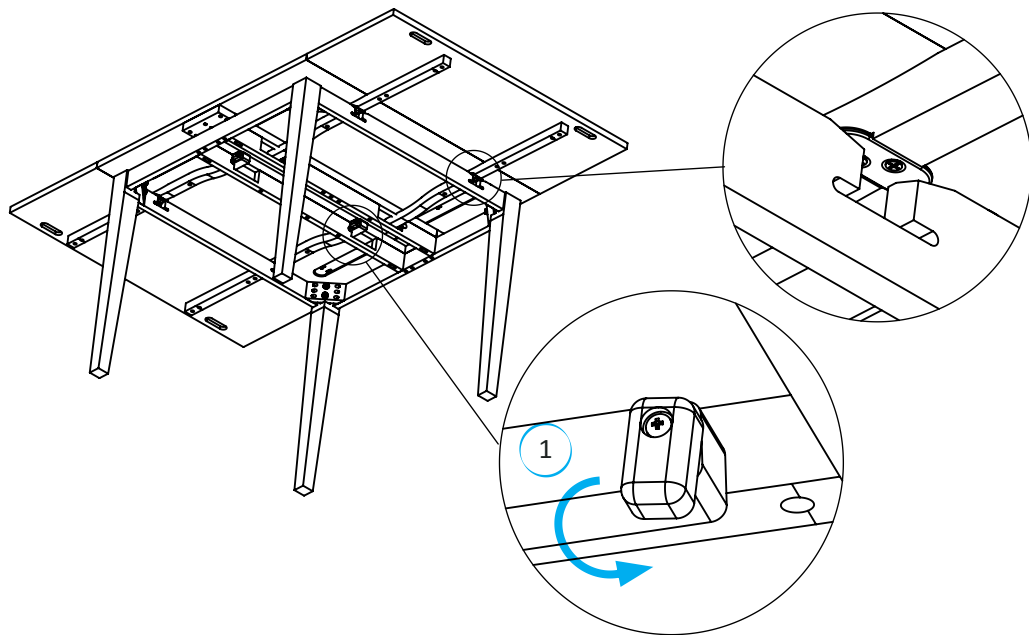
LEAF OPENNING EXTENSION INSTRUCTION



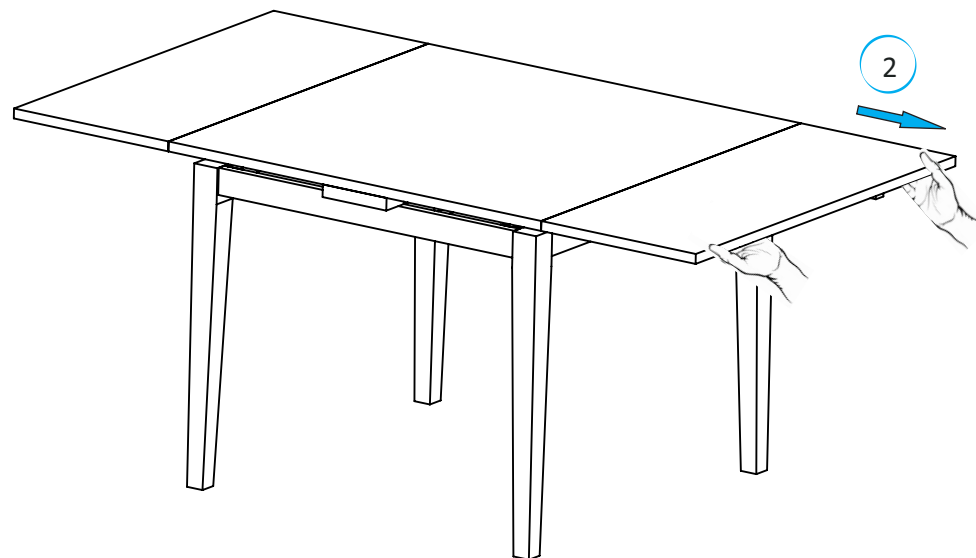
LEAF OPENNING EXTENSION INSTRUCTION



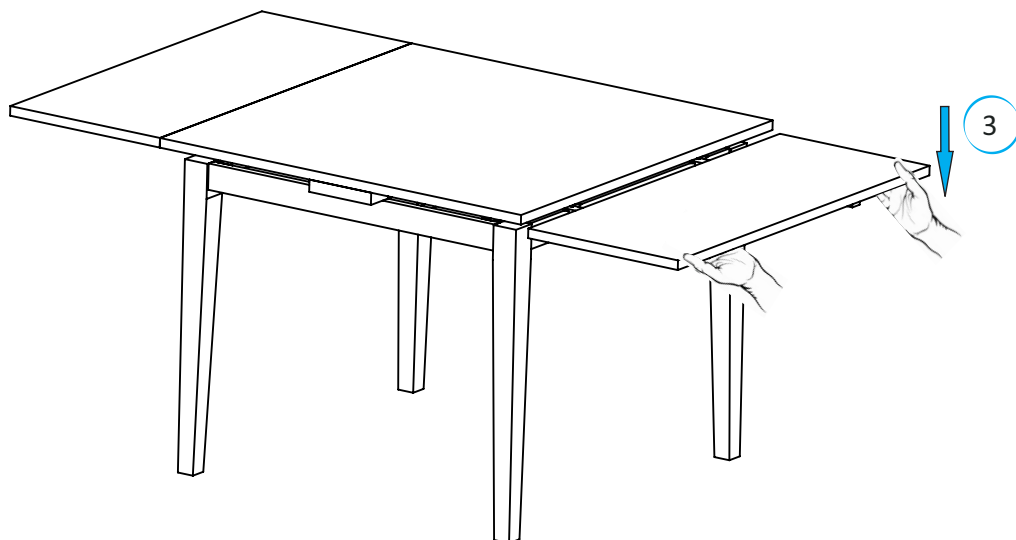
CLOSING LEAF INSTRUCTION



CLOSING LEAF INSTRUCTION



CLOSING LEAF INSTRUCTION



CLOSING LEAF INSTRUCTION

