

ATLANTIC BEACH/MODEL OHSM



QCA Spas
"A Step Ahead Since 1966"

FEATURES

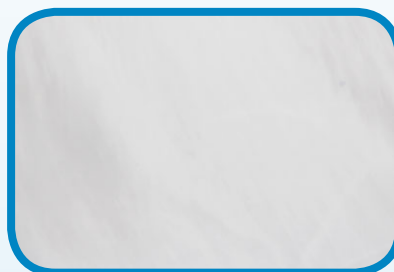
- ▶ 2 Person Oval Spa
- ▶ 16 Luxurious Stainless Steel Jets with Air Flow Control System
- ▶ Patented Dura-Bond™ Acrylic Shell in Silver Marble
- ▶ Weather Guard™ Maintenance-Free Synthetic Gray Color Cabinet
- ▶ SoftTouch™ Controls and Energy Saver™ System
- ▶ Exceeds the California Energy Mandate for Energy Efficiency
- ▶ Built-In Filter and Ozone Included
- ▶ Insulated, Lockable Accenting Hard Cover



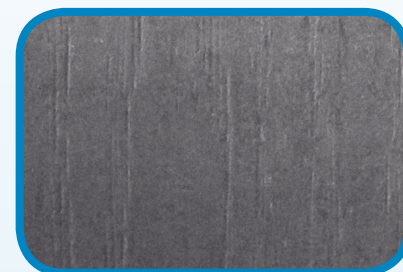
SPECIFICATIONS

- ▶ Dimensions: 91" L x 42" W x 29"D
- ▶ Gallons: 190 (U.S.)
- ▶ Energy Saver 2 Speed Super High Flow Pump
- ▶ 1 KW Heater / 4KW Heater with 240V Conversion (Electrician Required)
- ▶ 12 Volt Starburst LED Light
- ▶ Controls: Easy to Use Balboa Digital Electronics Panel with LCD temperature read-outs

SILVER MARBLE SHELL WITH GRAY COLOR CABINET



Silver Marble Shell



Gray Cabinet





ATLANTIC BEACH FEATURES

► EASY TO SET UP

No electrician required!

Plugs into any standard 120V / 15Amp outlet.

No plumbing required, just fill with a garden hose

GFCI safety breaker comes built-in!



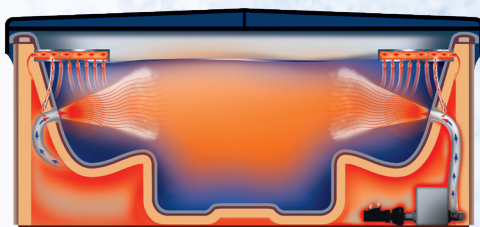
SOFTTOUCH™ CONTROLS



State-of-the-art digital electronic control with LCD temperature and filtration readout. All functions are located at your fingertips.

ENERGY SAVER SYSTEM™

Heat is generated by the spa's power equipment inside the cabinet. This heated air is captured and returned to the spa's water. This continually helps maintain the water temperature without running the heater as often. The heat recovery system saves you money by reducing electrical cost.



MAINTENANCE-FREE WEATHER GUARD™ CABINET

Our synthetic cabinets with reversible panels are known for their rich, beautiful appearance and long lasting durability. Fully removable access panels make service a breeze.



HIGH POWER JETS

A harmonic balance of jets and water-flow engineered to provide maximum hydrotherapy, style and comfort.



FILTRATION SYSTEM

Efficient weir skimmer and micro filtration system keep your spa comfortably fresh and sparkling clean.

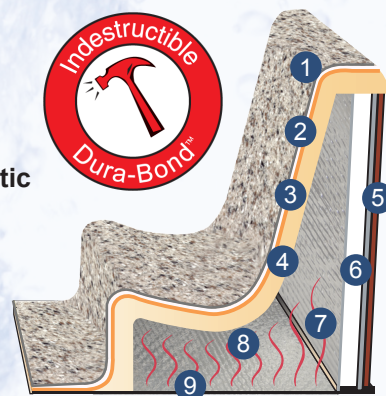
PATENTED

DURA-BOND™

This four layer, patented strengthening process combines the beauty of Lucite Plus Acrylic™ with a layer of ABS for shell strength and integrity. Then a double strengthening material is applied. This high density material has all the strengthening properties of fiberglass without the environmental concerns.

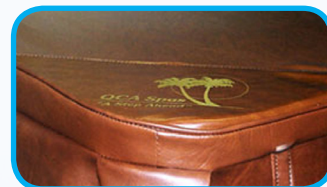
SHELL STRENGTHENING SYSTEM

1. Acrylic Plus™
2. ABS
3. Dura-Bond™ with Foam Insulation
4. Polyethylene Foam
5. Dura-Frame™ with Synthetic Reversible Panels
6. Polystyrene Insulation
7. Radiant Foil Insulation
8. Thermal Air Barrier
9. Moisture-Resistant Polyethylene Flooring



THERMAL SPA COVER

A durable, lockable barrier from the elements provides money saving thermal protection along with safety and security when spa is not in use. Your spa cover will accent your cabinet color to complete the stylish look of your spa.



**To Order Your QCA Spa
Please see a Lowe's Associate!**



SPA DISCLAIMER: QCA Spas, Inc. reserves the right to make changes to the spas at any time without notice. This includes jet configurations, jet style, shell color, design, specifications, cabinetry and equipment. Due to subtle variations in the acrylic shell and the nature of construction, color, etc. may deviate slightly from the listed specifications. We reserve the right to change models and pricing at any time, without notice.