



MANHATTAN
COMFORT

888-230-2225

help@manhattancomfort.com

319 Ridge Rd. Dayton, NJ 08810, New Jersey - United States

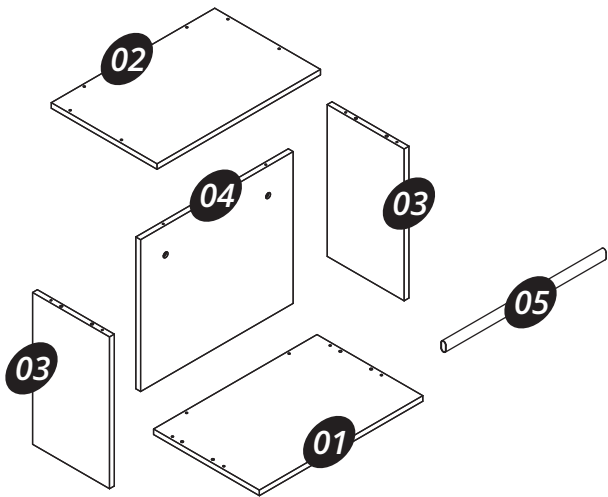


Rockefeller

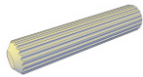
20.08" Floating Open Hanging Closet

Included in the package

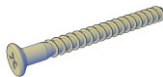
Part	Description	Qty	Box
01	Base	01	01
02	Top	01	01
03	Lateral	02	01
04	Rear Panel	01	01
05	Hanger Bar	01	01



Hardware



A = 08x



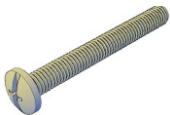
B = 12x



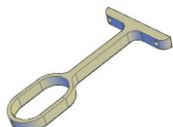
C = 04x



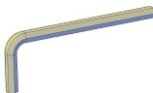
D = 02x



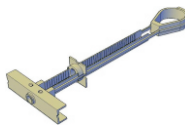
E = 02x



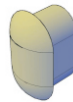
F = 02x



G = 01x

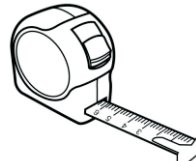
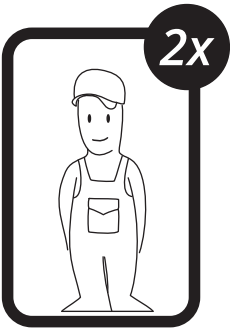


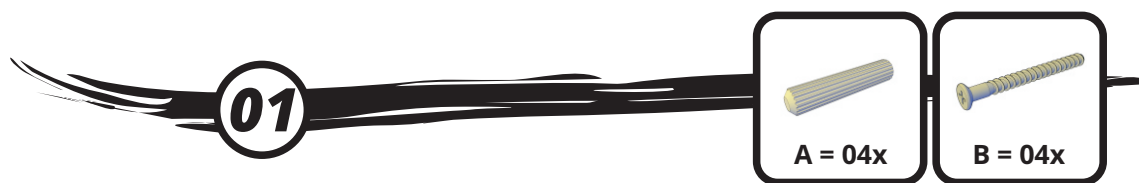
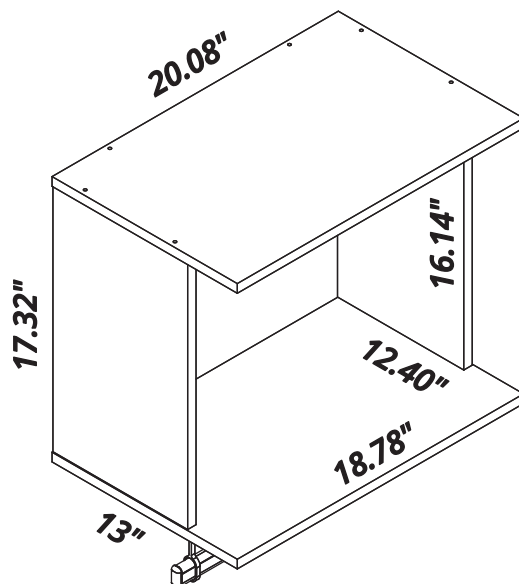
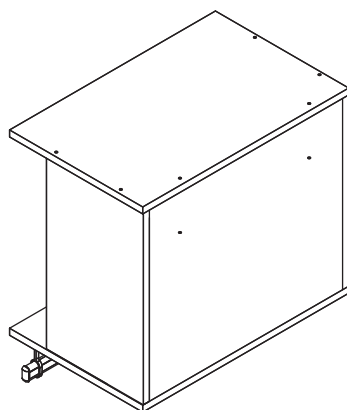
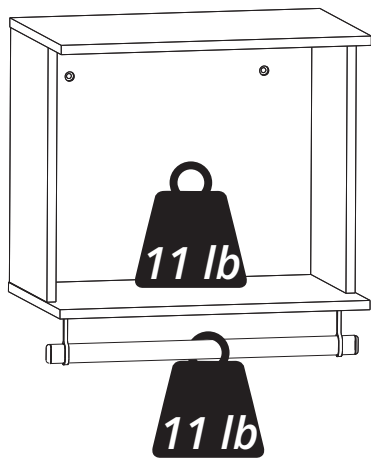
H = 02x



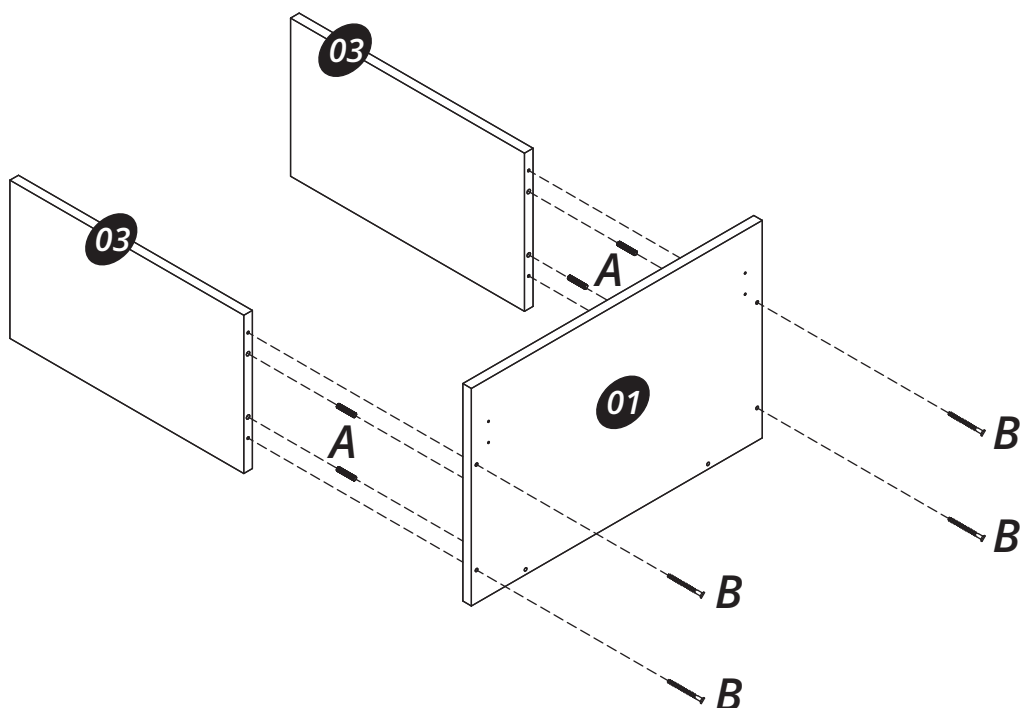
I = 02x

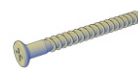
Tools needed (not included)



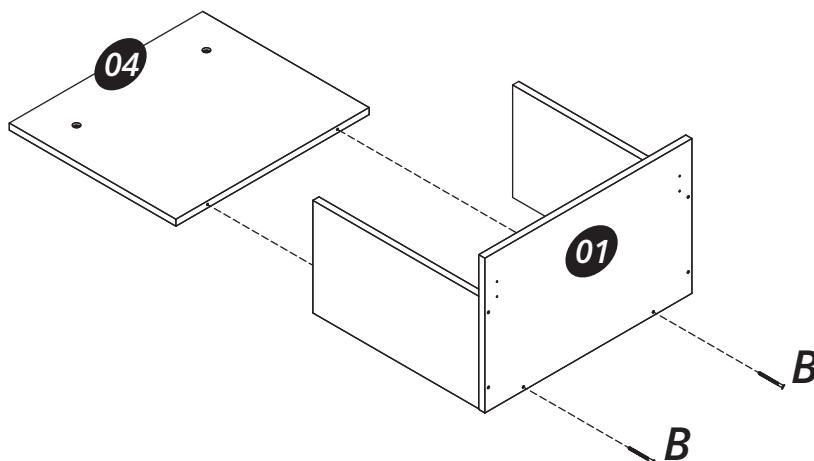
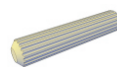
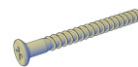


Connect the part (01) onto the parts (03) with the hardware (A + B).

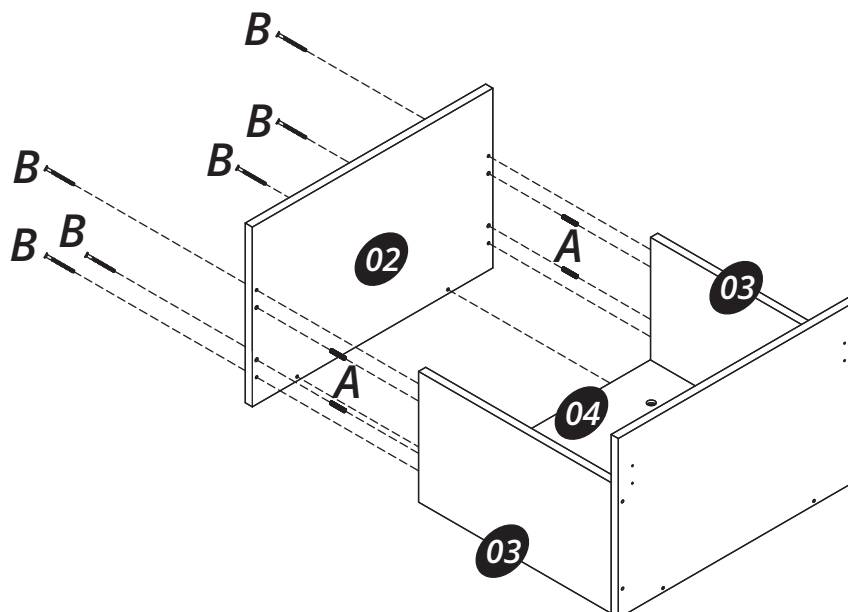


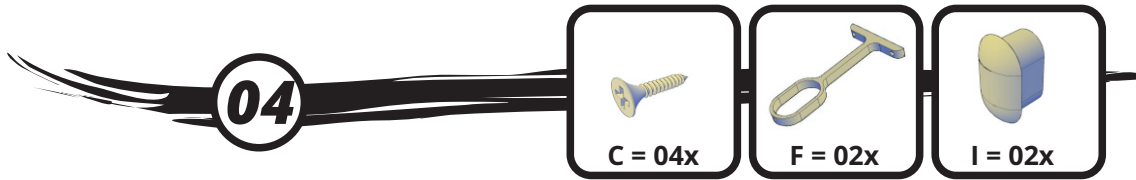
02**B = 02x**

Observe the correct position of the part (04) before connect onto the part (01) with the hardware (B).

**03****A = 04x****B = 06x**

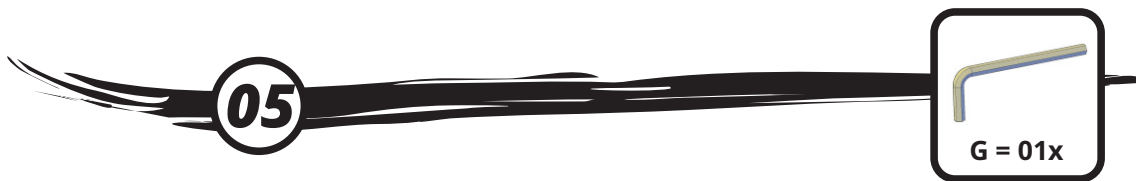
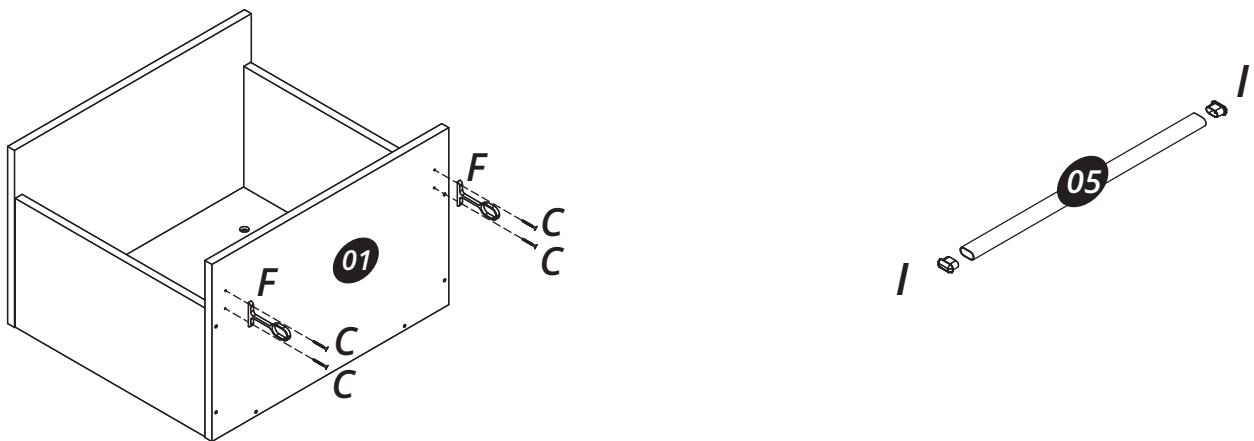
Connect the part (02) onto the parts (03, 04) with the hardware (B) and the hardware (A).



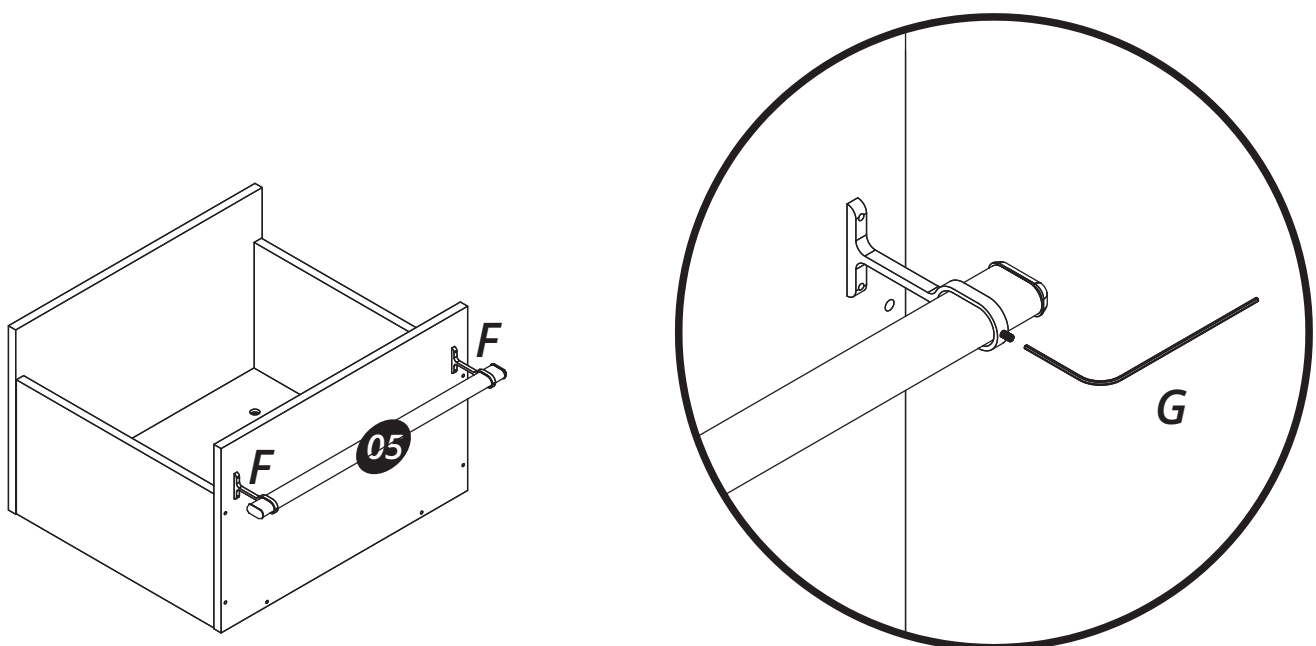


Connect the hardware (F) onto the part (01) using the hardware (C).

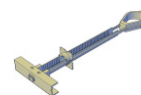
Connect the hardware (I) into the part (05).



Pass the part (05) through the hardware (F) and use the hardware (G) to tight the screw as shown on detail.



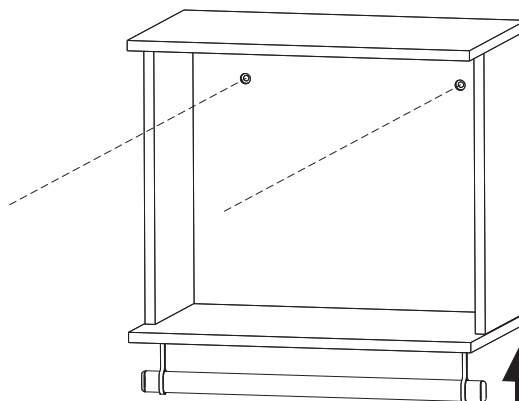
06



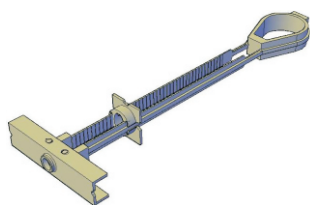
H = 02x

Observe the indicated height of the Floating Open Hanging Closet using the floor as reference (around of 72").

You will need a pencil to mark where you should drill the wall with a 1 /2" drill bit to put in the hardware (H).



72"



You will need apply the hardware (H) into the hole that you drilled on the wall.



Connect the Floating Open Hanging Closet on the wall with the hardware (E + D)

