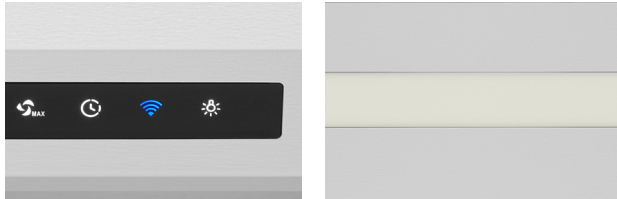




## SUITABLE COOKING STYLE &amp; FEATURES:

○ ————— ○ ————— ●  
**Minimal** **Everyday** **Heavy-Duty**

**PRO500****PRO-STYLE UNDER CABINET & WALL MOUNT****SIZE: 30" | 36"****PRODUCT DESCRIPTION**

With a modern, geometric body, this range hood shines from any angle of the kitchen. This versatile new range hood can be installed under a cabinet or on the wall. The manual control panel is easy to operate while the dishwasher-safe PRO-style baffle filters make maintenance a breeze.

**WHAT'S INCLUDED**

7" Duct Adapter (1), Grease Tray (1), Dishwasher-Safe PRO-Style Baffle Filters (2) for 30" Model | (3) for 36" Model, Wood Strip (1), Mounting Template (2), Aluminum Foil Tape (1) and Hardware Parts.

**OVERALL PRODUCT DIMENSIONS (WxDxH)**

PRO500SS 30": 29 3/4" x 25" x 18"

PRO500SS 36": 35 3/4" x 25" x 18"

**WARRANTY**

2-Year Limited Warranty and Lifetime Warranty on Motor

**FEATURES & BENEFITS:****INNOVATIVE HAUSMART™ TECHNOLOGY:**

Integrated with app control or voice command.  
 (compatible with Alexa and Google Home)

**WHAT IS HAUSMART™ TECHNOLOGY**

Hauslane's groundbreaking HauSMART™ technology enables seamless control through our smartphone app, hands-free gesture recognition, and voice commands compatible with Alexa and Google Home. Say hello to a new era of hassle-free cooking experiences!

**SCAN THE QR CODE**

Experience HauSMART™ in action

**AESTHETIC FROM ANY ANGLE:**

Characterized by clean lines and an ergonomic build, the PRO500 is designed to minimize limitations and optimize the capabilities of any home chef.

**LOW NOISE OPERATION:**

Equipped with a specialized AC motor engineered for minimal sound emission.

**ENERGY-SAVING LED LIGHT STRIP:**

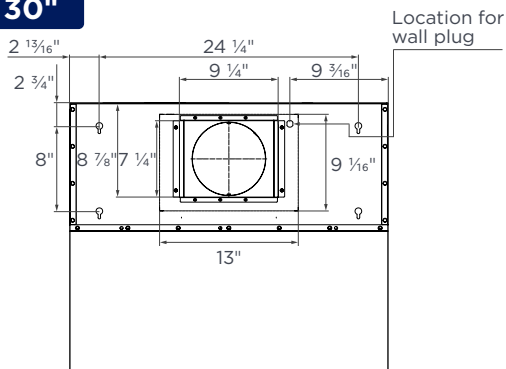
Provides optimal visibility for your food preparation while contributing to a tastefully and relaxed atmosphere in your kitchen.

**ADA COMPLIANT PRODUCT:**

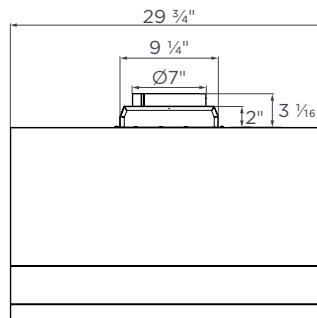
This ADA compliant range hood can be operated via smart device, enhancing safety for users of all abilities.

## TECHNICAL DRAWING

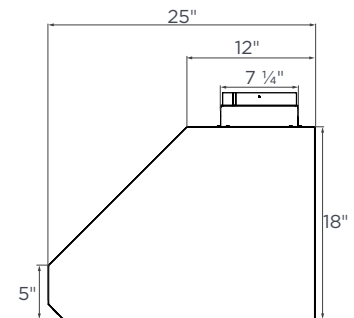
30"



TOP

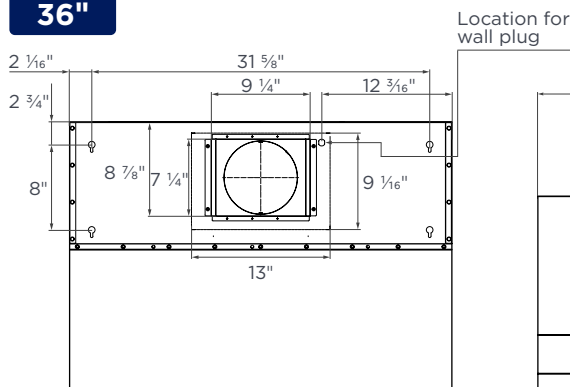


FRONT

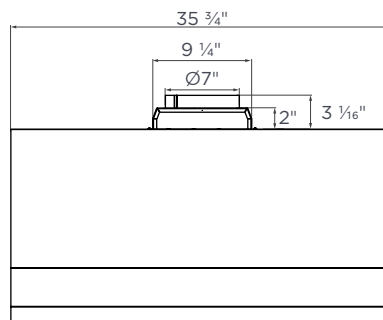


SIDE

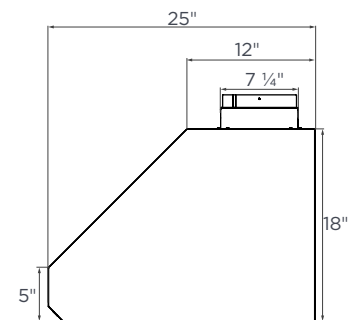
36"



TOP



FRONT



SIDE

## SPECIFICATIONS

SIZE	30"   36"
STYLE	Under Cabinet   Wall Mount
RECIRCULATING	N/A
CLEANING FUNCTION	N/A
NOISE LEVEL	1.5 to 6.0 Sones
LIGHT COLOR TEMP.	Warm / 3000 Kelvin
LUMENS	200
LIGHT BULB	12W LED (Integrated)
LIGHT INTENSITY	1 Level
DELAY FUNCTION	Yes
CONTROL	Touch Panel
SPEED SELECTIONS	4 Levels
SPECIAL FEATURES	Wi-Fi / ADA Compliant / App / Gesture Control / Baffle Filter Cleaning Reminder

COOKING STYLE	Heavy-Duty
EQUIVALENT AIRFLOW	1000 CFM
LABORATORY AIRFLOW	550 CFM
TOP VENTING	7" Round
REAR VENTING	N/A
MOTOR	Single
AMPERAGE	3
WATTAGE	360
VOLTAGE	120
CONNECTION	Plug-In
GROSS WEIGHT, LBS.	30": 75   36": 82
NET WEIGHT, LBS.	30": 56.6   36": 61.9
DIMENSIONS (WxDxH)	30": 29 3/4" x 25" x 18" 36": 35 3/4" x 25" x 18"