

# KENSINGTON 60" SINGLE SINK BASE CABINET

# ARIEL

## BASE CABINET DIMENSIONS

60" W x 21.5" D x 33.5" H



## FEATURES

- Solid wood frame & plywood panels
- Dovetail drawers and joints
- Soft closing doors & drawers

## HARDWARE FINISHES\*



Brushed Nickel    Satin Brass    Matte Black    Polished Chrome

*Hardware comes preinstalled with the illustrated option.  
Other finishes are available on our online store if you prefer a different one.*

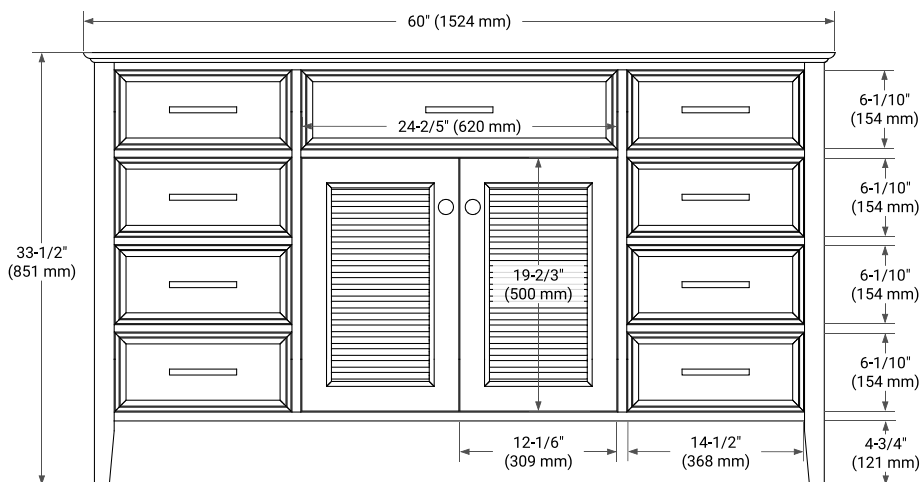
## AVAILABLE COLORS



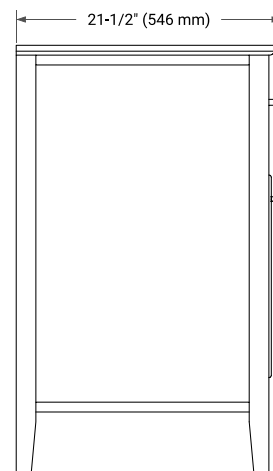
White

Grey

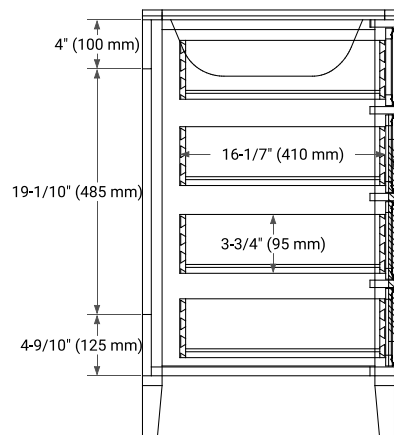
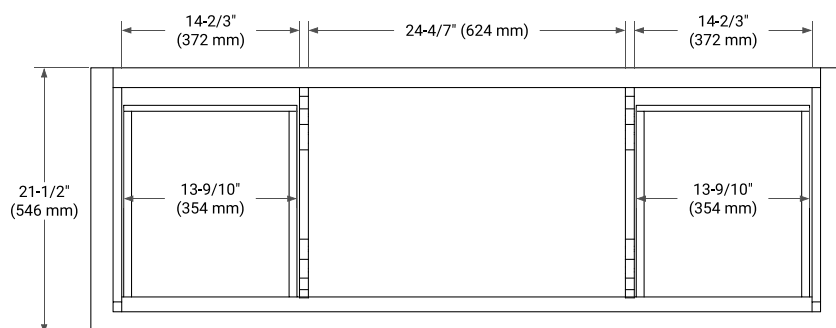
## FRONT VIEW



## SIDE VIEW




## PLAN VIEW



# ARIEL

61" W x 22" D x 1.5" H



White Quartz

- Solid countertop with mitered edges & seams
- Undermount white rectangular sink
- Pre-drilled for 8" widespread faucet

- Countertop
- Matching Backsplash
- Rectangle Sink

Technical drawing of a rectangular plate with the following dimensions and specifications:

- Overall width: 61" (1550 mm)
- Overall height: 22" (559 mm)
- Distance from left edge to center of first hole: 21-9/10" (557.5 mm)
- Distance between centers of first and second holes: 8" (204 mm)
- Distance between centers of second and third holes: 1-3/8" (35 mm)
- Distance from right edge to center of third hole: 1-3/8" (35 mm)
- Distance from bottom edge to center of third hole: 5" (127 mm)
- Distance from left edge to right edge of rectangular area: 17-1/8" (435 mm)
- Distance from top edge to top of rectangular area: 2-1/2" (63.5 mm)
- Height of rectangular area: 12" (305 mm)

Technical drawing of a mechanical part. The part has a horizontal top surface and a vertical right surface. The top surface has a width of  $3/4"$  (18 mm). The right surface has a height of  $1-1/2"$  (40 mm). The top-right corner is rounded with a radius of R2. The bottom surface is not shown, but the part is indicated to be symmetrical.

Isometric view of the 61 inch long stainless steel sink. Dimensions shown: 22" (559 mm) width, 61" (1550 mm) length, 4" (102 mm) depth, and 1-1/2" (40 mm) rim height. The sink features a central rectangular basin with rounded corners and three circular drain holes.