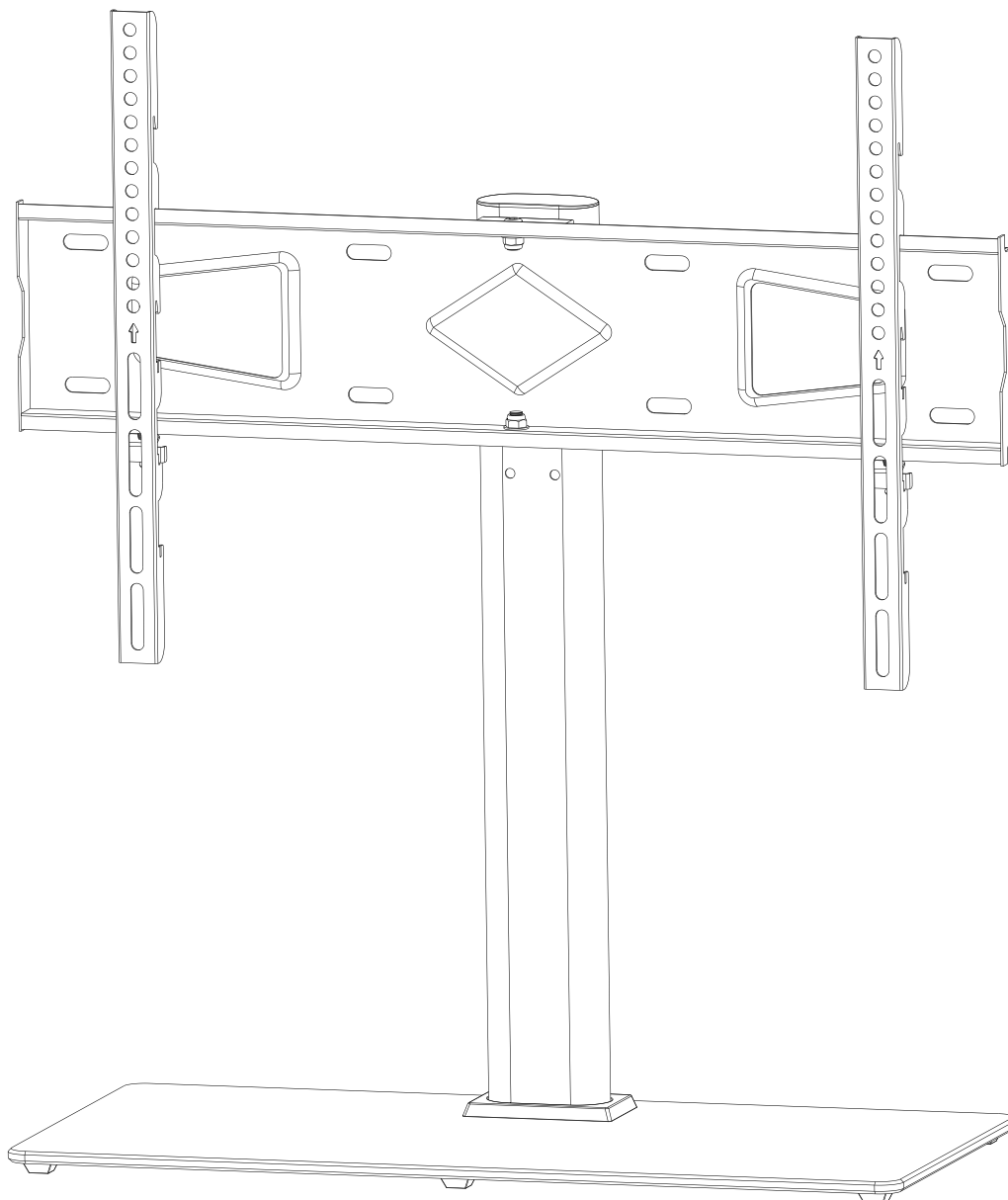


1

**PRO MOUNTS**  
AMSA6401-02 STANDS



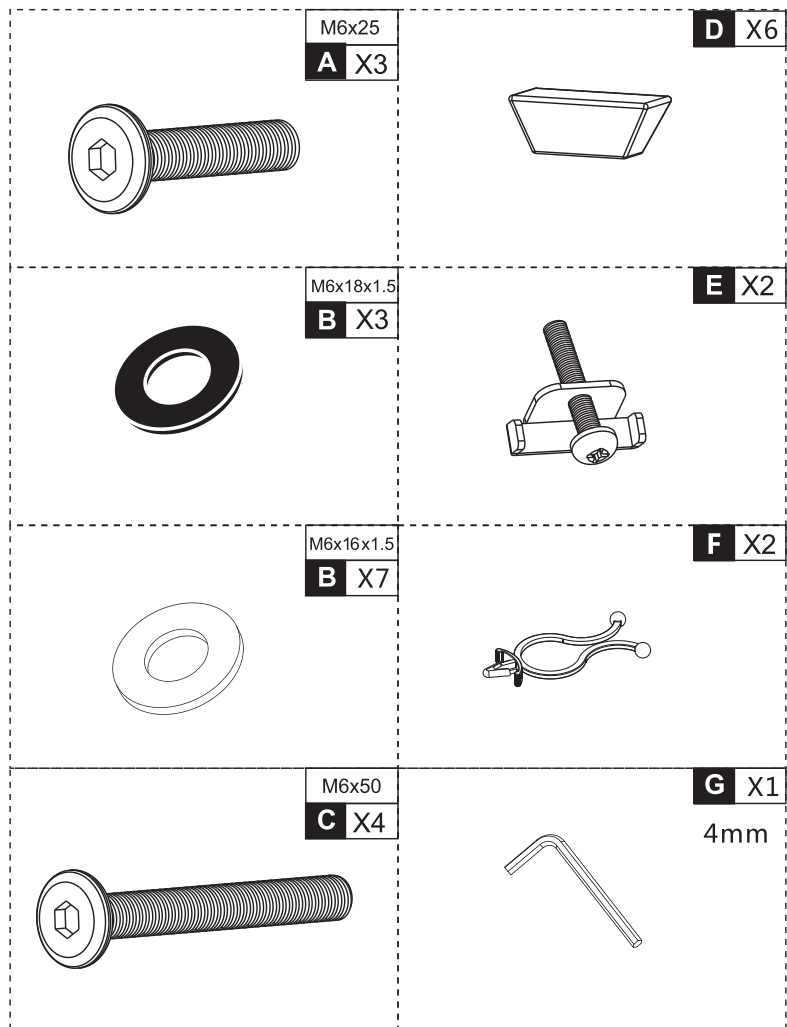
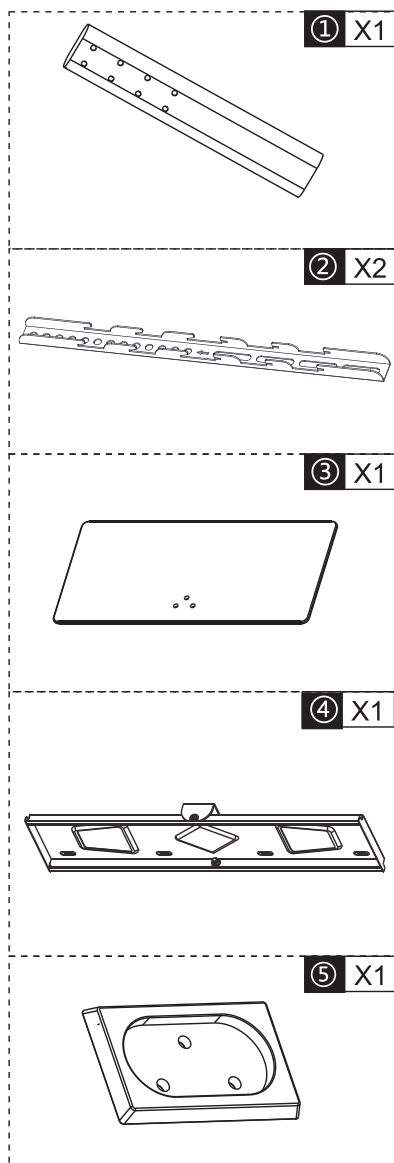
Max: 600x400mm  
Min: 75x75mm



**!**  
CAUTION: DO NOT EXCEED  
RATED LISTED WEIGHT. SERIOUS  
INJURY OR PROPERTY DAMAGE  
MAY OCCUR!

**AMSA6401-02**

## PART LIST



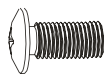
## FOR TV INSTALLATION



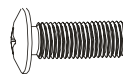
M6X16  
**TV1** X4



M6X35  
**TV2** X4



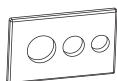
M8X16  
**TV3** X4



M8X25  
**TV4** X4



M8X50  
**TV5** X4



Washer  
**TV6** X4



SP1  
**TV7** X8

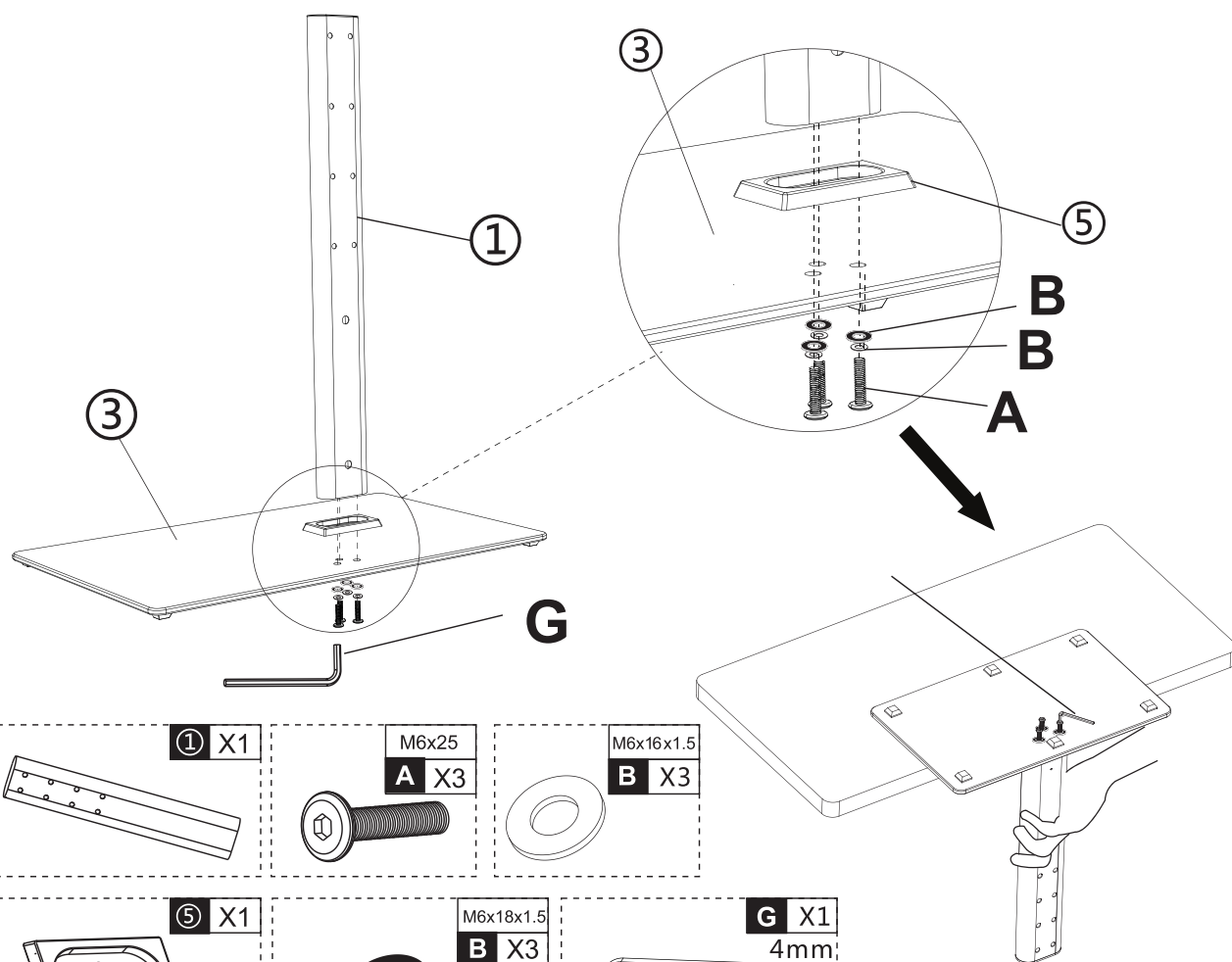
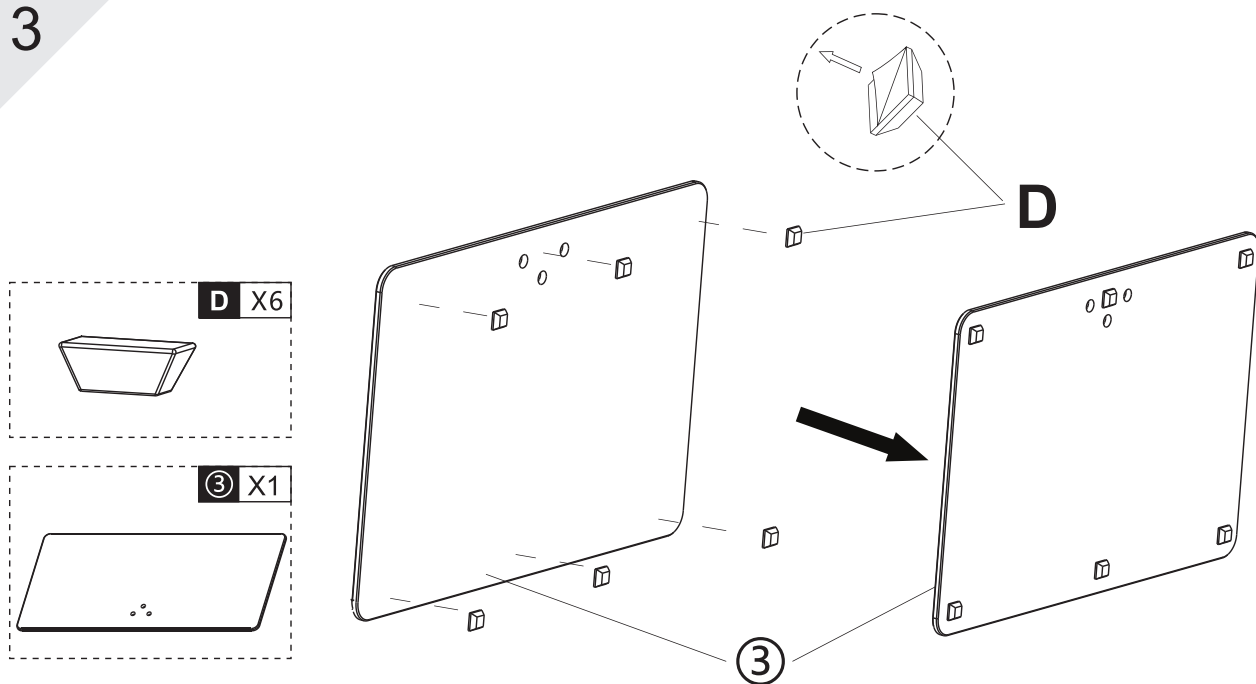


SP2  
**TV7** X8

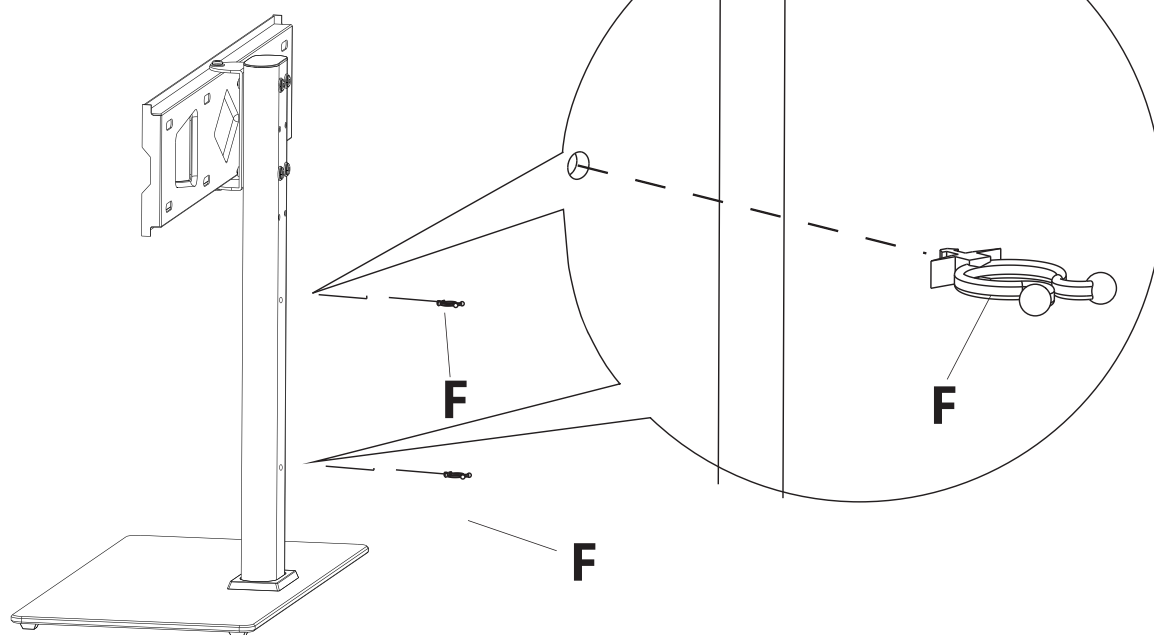
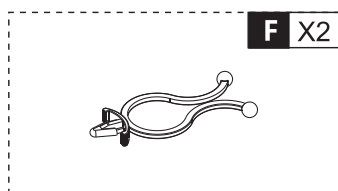
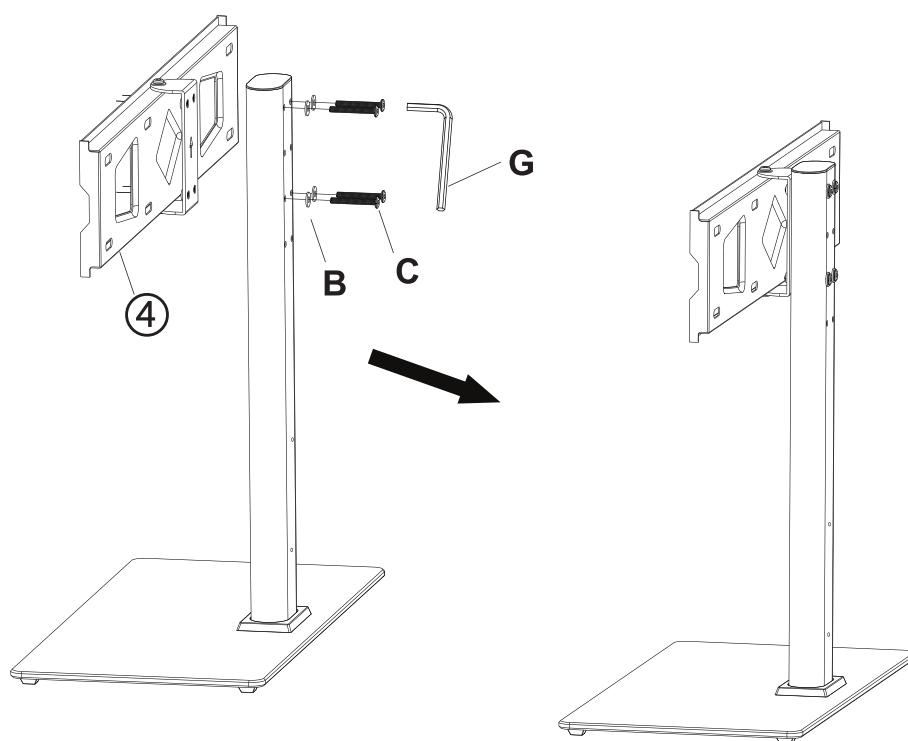
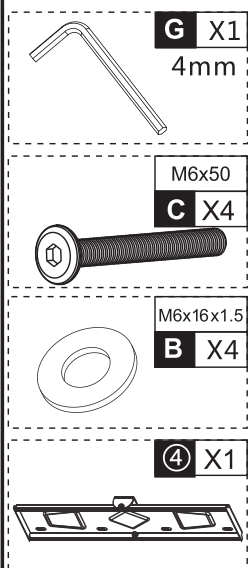


SP3  
**TV8** X8

3

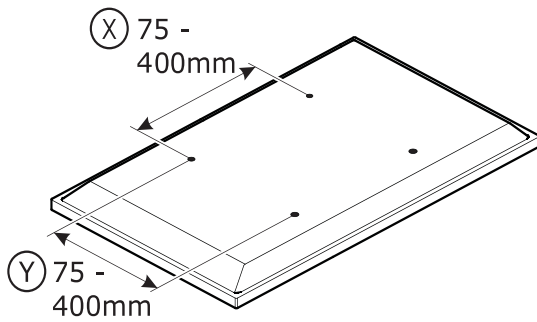


4

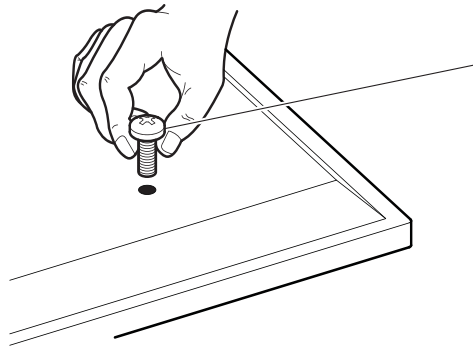


5

Measure the TV fixing holes Width and Height



If width (X) is greater than 600mm or height (Y) greater than 400mm STOP installation now and contact the customer help line



TV1

TV2

TV3

TV4

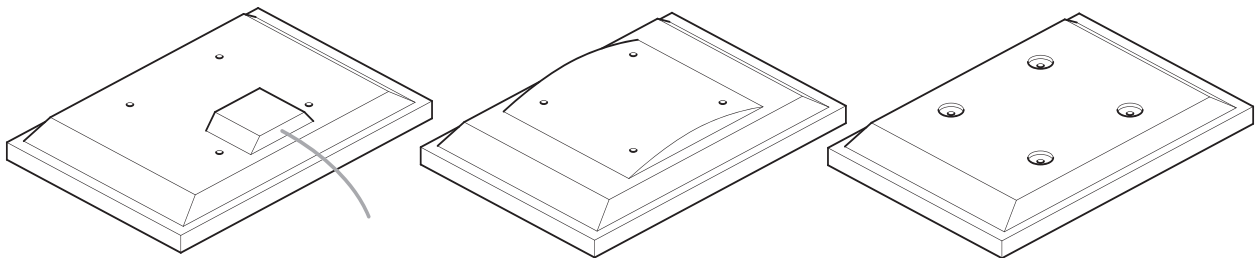
TV5

You are provided with 4 diameters of TV fixing screws, **M6** and **M8**. Determine the screw diameter that fits.

Spacers

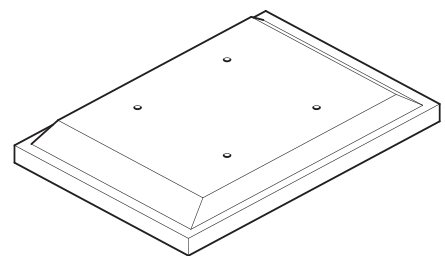
SP

For TVs with irregular/obstructed back



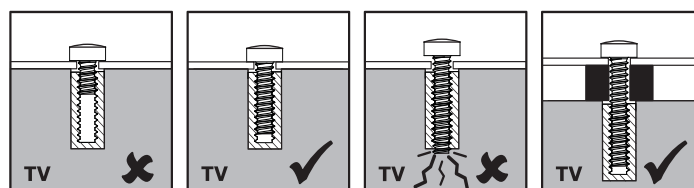
No Spacers

For TVs with flat/unobstructed back



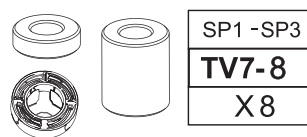
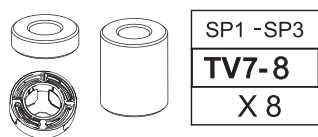
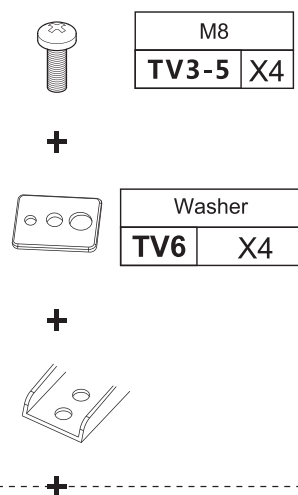
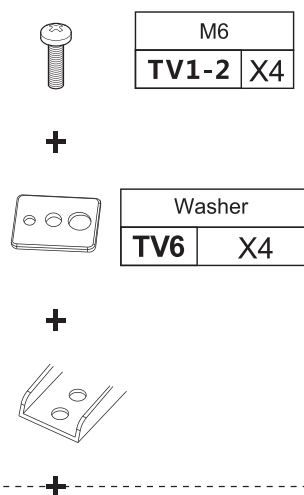
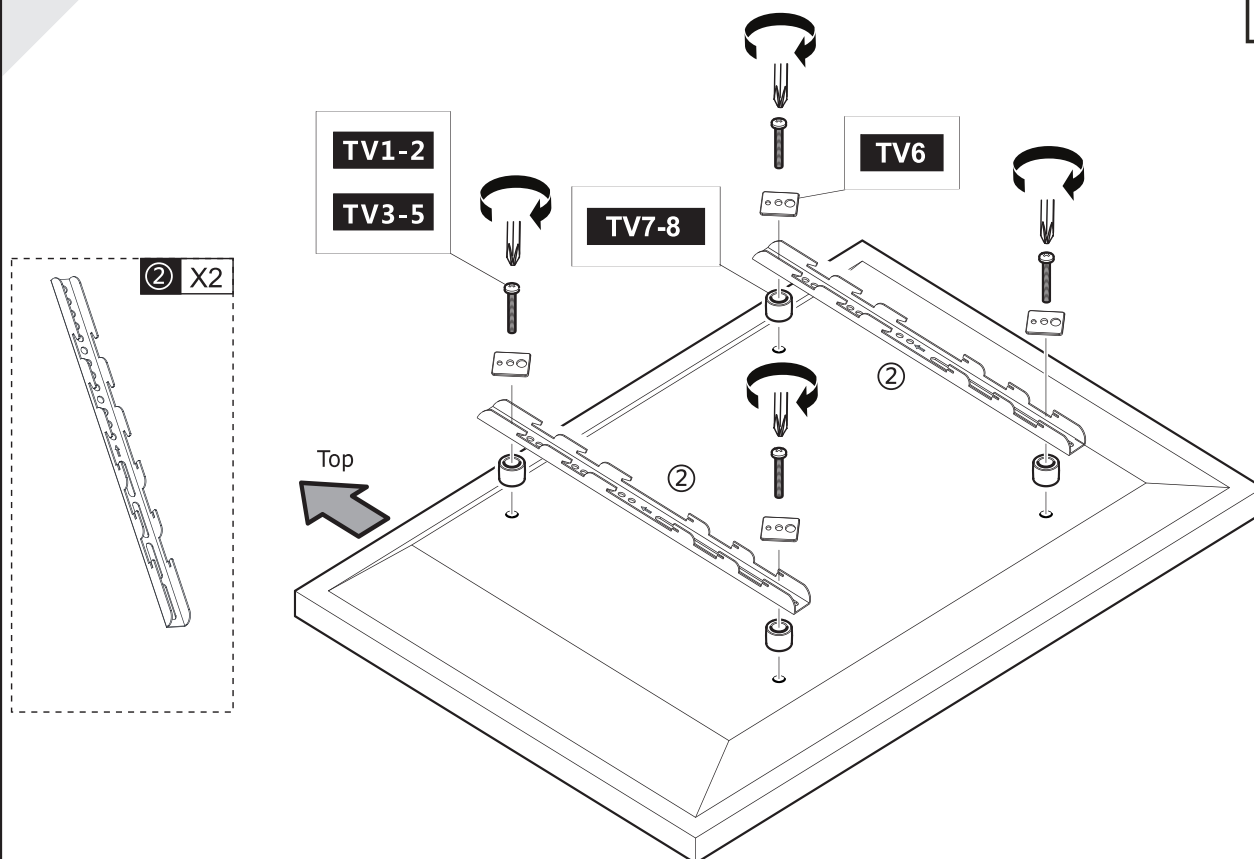
WARNING

please keep for future reference.



6

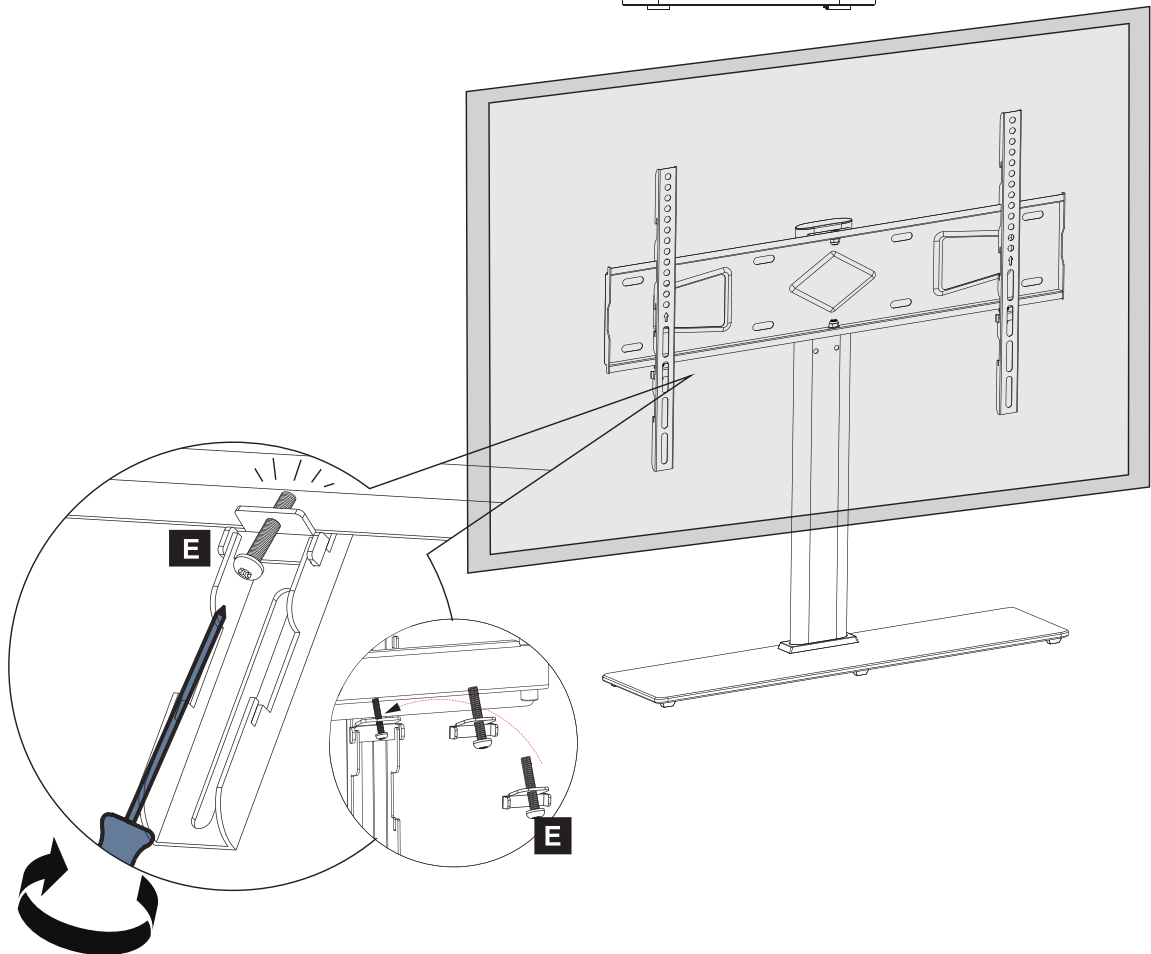
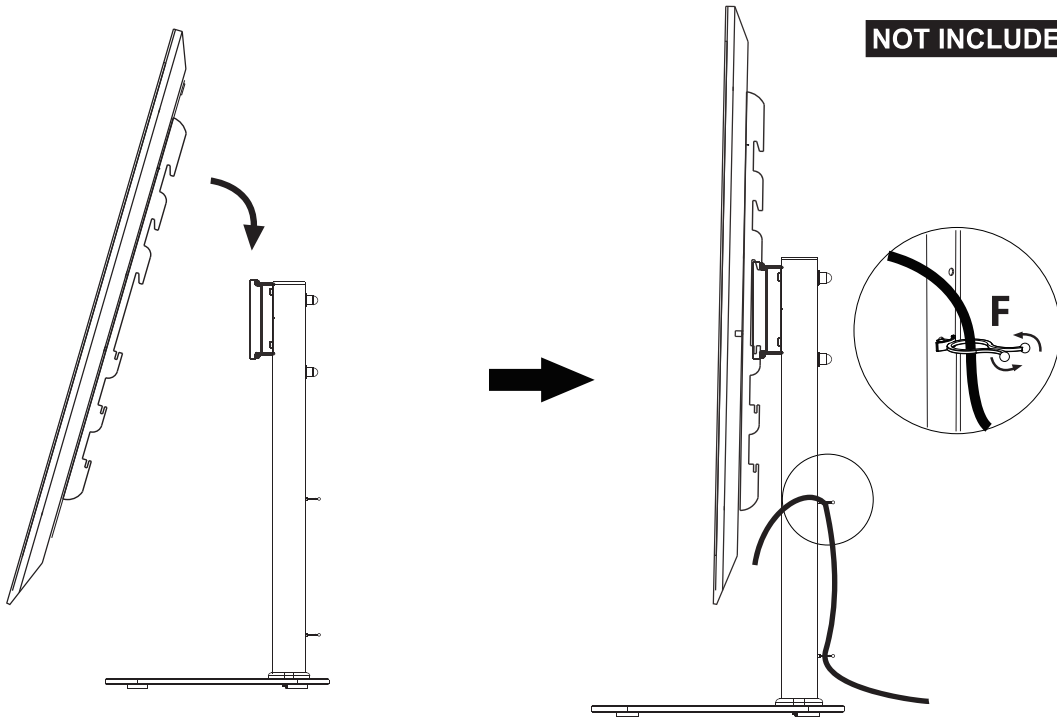
NOT INCLUDED



Attach the bracket to the back of your TV using suitable screw, reducer and spacer combinations.

7

NOT INCLUDED



E X2

