



# Bryant® Oval

Oval Self-Rimming Lavatory  
K-R2699-4

## Features

- 4" (102 mm) centerset faucet holes.
- Oval basin.
- Overflow drain.

## Material

- Vitreous china.

## Installation

- Drop-in.

## Recommended Products/Accessories

K-7107 Decorative Drain  
K-7108 Decorative Drain  
K-7129 Drain  
K-9018 P-Trap  
K-23726 Drain treatment  
K-23725 Cast iron cleaner



ADA

## Codes/Standards

ASME A112.19.2/CSA B45.1  
ADA  
ICC/ANSI A117.1


## KOHLER® One-Year Limited Warranty

See website for detailed warranty information.

## Available Colors/Finishes

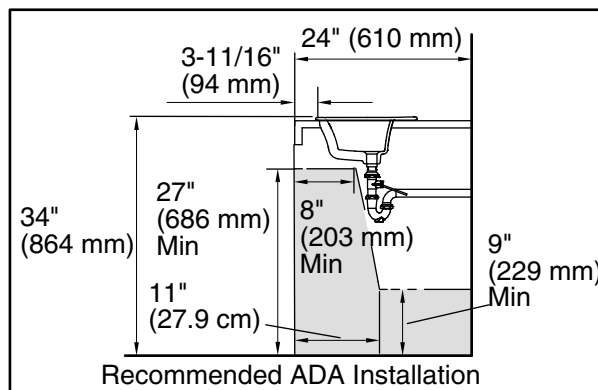
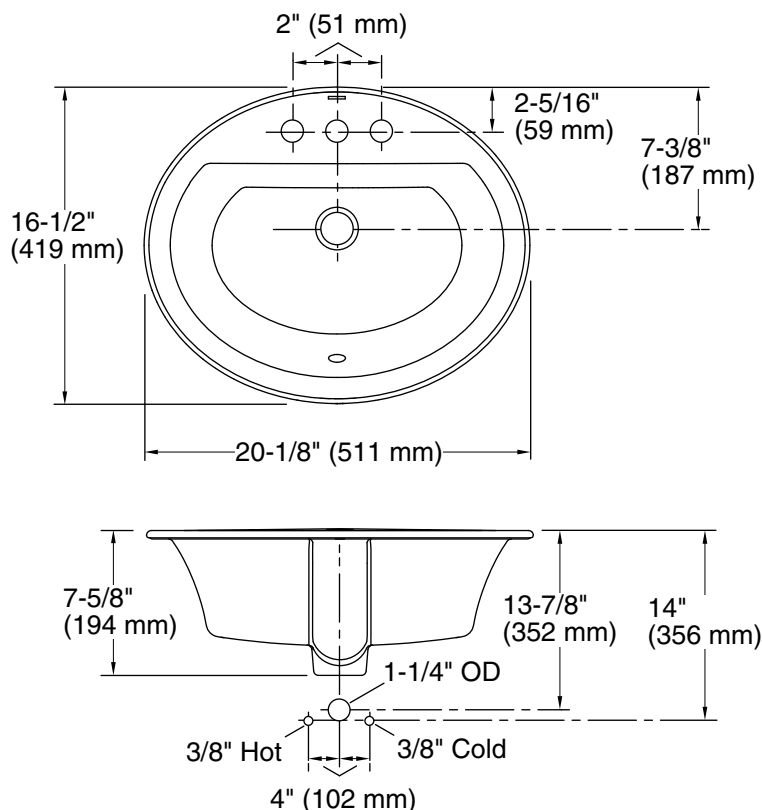
*Color tiles intended for reference only.*

Color	Code	Description
-------	------	-------------

	0	White
---	---	-------



**Bryant® Oval**  
Oval Self-Rimming Lavatory  
**K-R2699-4**



### Technical Information

All product dimensions are nominal.

Installation:	Drop-in
Bowl area:	With overflow: Yes Water depth: 5-5/8" (143 mm)
With overflow:	Yes
Faucet hole spacing:	4" (102 mm)
Faucet hole(s):	1-1/4" (32 mm)
Drain hole:	1-3/4" (44 mm)
Template:	1155261-7, required, included

### Notes

Install this product according to the installation instructions.

Spout must be 5" (12.7 cm) long (min) for adequate clearance into the lavatory when installed with the centerline as shown.

Spout must be tall enough to clear 3" (7.6 cm) rim height and provide a 1" (2.5 cm) air gap per ASME A112.1.1.

**NOTICE:** Countertop manufacturer or cutter must use the cut-out template provided with the product, or a current one provided by Kohler Co. (call 1-800-4-KOHLER). Kohler Co. is not responsible for cut-out errors when the incorrect cut-out template is used.

ADA compliant when installed to the specific requirements of these regulations.