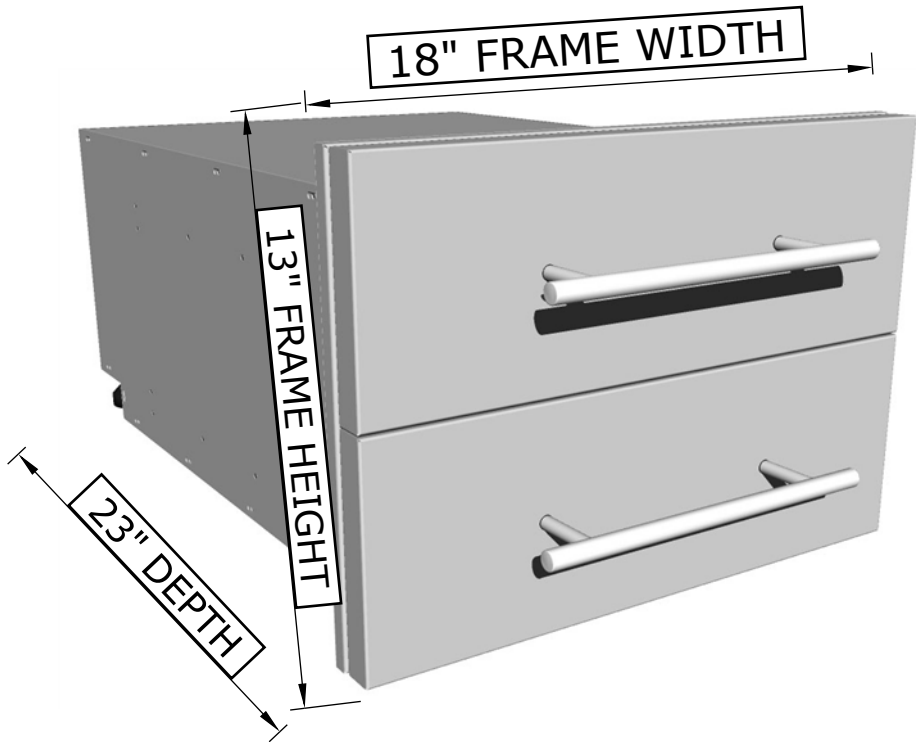
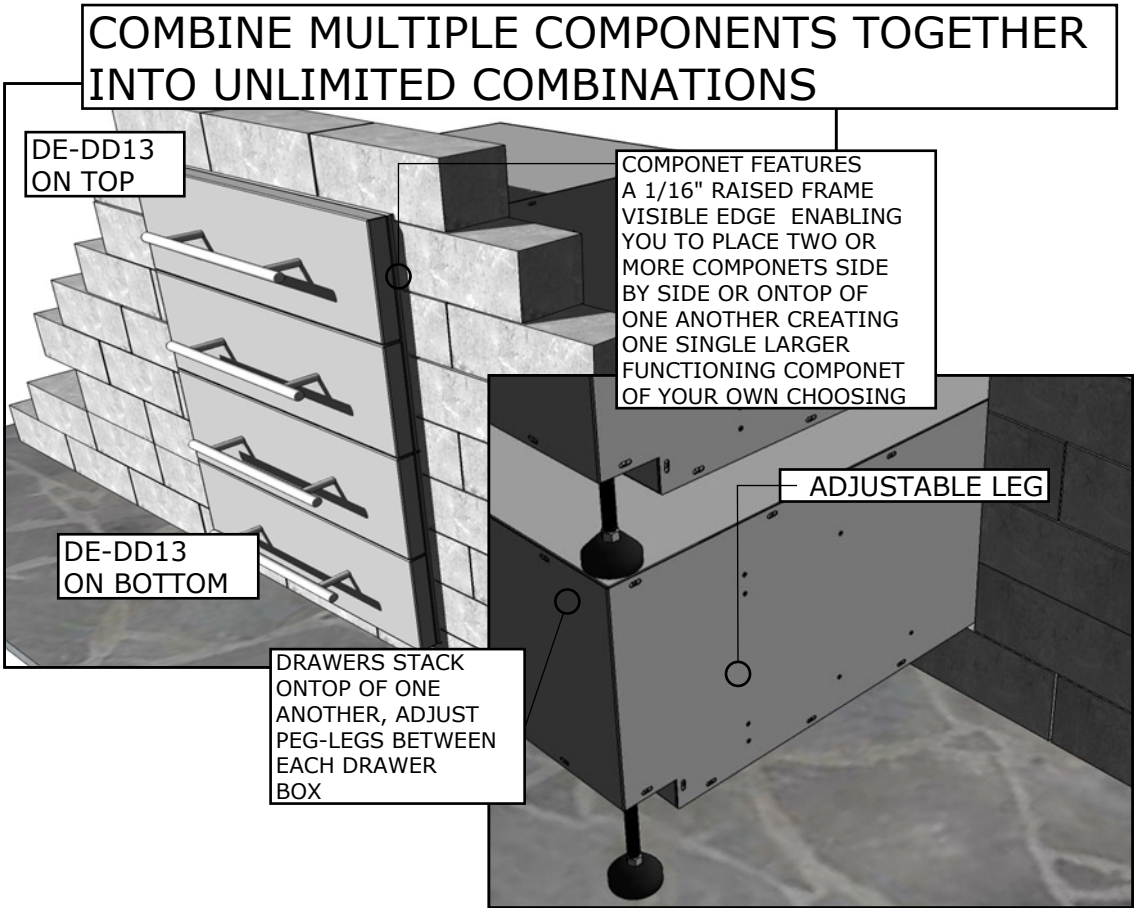
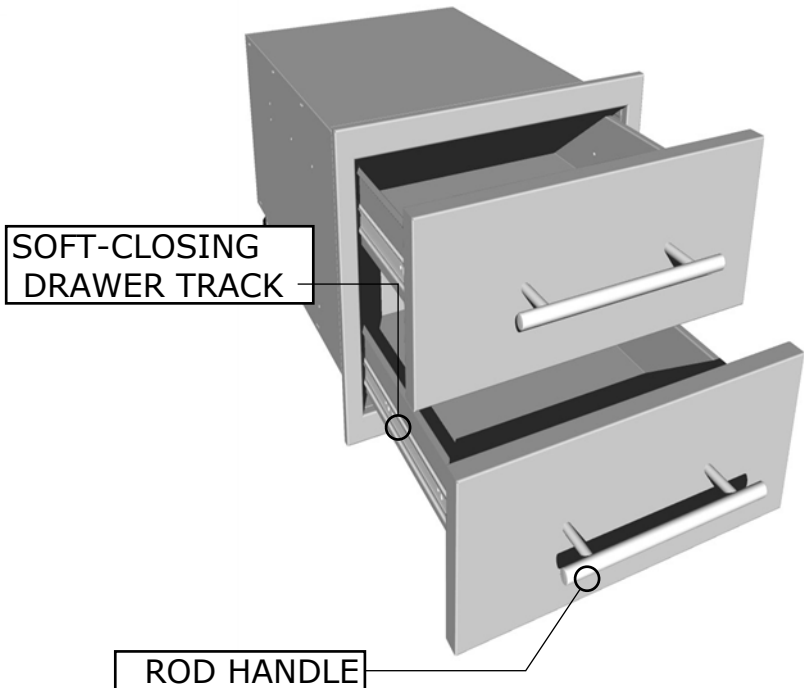
	<b>PRODUCT</b> 13" Height Double Drawer <b>Item No.</b> DE-DD13	<b>DESCRIPTION</b> Designer Series, Raised Style - 18" x 13" Height Double Drawer	<b>PRODUCT DIMENSIONS</b> 18" WIDTH x13" HEIGHT x23" DEPTH (PRODUCT SIZE) 16-1/2" WIDTH x11" HEIGHT x22" DEPTH (CUT-OUT)	<b>SPECIFICATIONS</b> Frame is made from 16 gauge 304 SS, and panel's are made from 18 gauge 304 SS. Inside Drawer Box is made with 20 gauge 201 SS. Handle is Solid 304 SS.	<b>WARRANTY</b> <ul style="list-style-type: none"> <li>• EXTERIOR FINISH -----3 YEARS</li> <li>• ROD HANDLES-----3 YEARS</li> <li>• DRAWER TRACK-----1 YEAR</li> <li>• PEG-LEGS-----1 YEAR</li> </ul>
---	---	--	---	---	---

Product Dimensions



Product Features



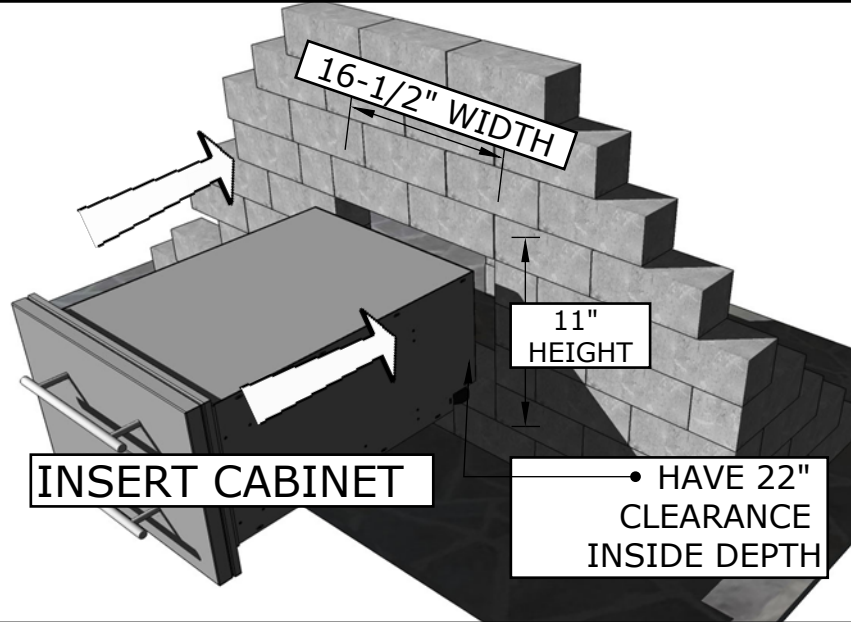
Product Installation

ISLAND WALL CUT-OUT SIZE IS 16-1/2" WIDTH BY 11" HEIGHT BY 22" DEPTH

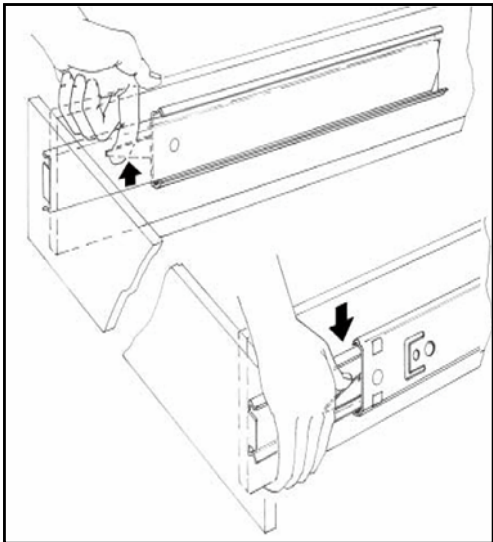
**IMPORTANT!!** - ROD HANDLES ARE MOUNTED TO INSIDE OF EACH PANEL, YOU MUST UNSCREW EACH ONE AND MOUNT ON OUTSIDE OF DRAWER OR DOOR PANEL.

See SUNSTONE manufacture website for additional product support and product tutorials:  
[www.sunstonemetalproducts.com](http://www.sunstonemetalproducts.com)

1 . INSERT COMPONENT



2. REMOVE DRAWERS



- REMOVE DRAWERS IN ORDER TO MOUNT BOX**
- Pull the drawer fully open so Levers are visible.
  - Push "DOWN" on the right lever, and "UP" on the left lever.
  - Holding levers in place, pull drawer toward you.

3. MOUNT DRAWER & LOWER LEGS

