

Skillion Roof Storage Shed

Instruction Manual for Sizes: 4' x 8' | 6' x 8'

contents



- 1 - floor
- 1 - back wall
- 2 - side walls
- 1 - door wall
- 2 - roof sections
- 2 - braces for roof overhang
- 8 - 3.5" screws for overhang braces
- 1 - touch up paint can
- 1 - T30 bit
- 1 - #2 sq bit
- Extra screws

happy with our products?

Please help us spread the
word by leaving a review at:

www.SHEDorize.com



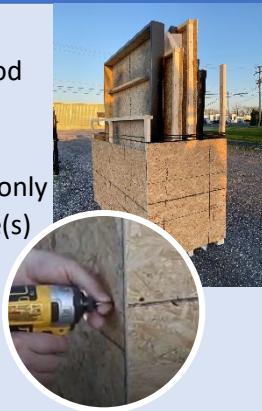
CONFIRM THAT ALL PARTS ARE PRESENT BEFORE BEGINNING ASSEMBLY.

For assembly, you will only need a screw gun and level. Depending on your height, a stepladder may be useful.

Step 1: Open Crate Up.

Take the screws out of the plywood and cut the plastic bands holding the crate frame.

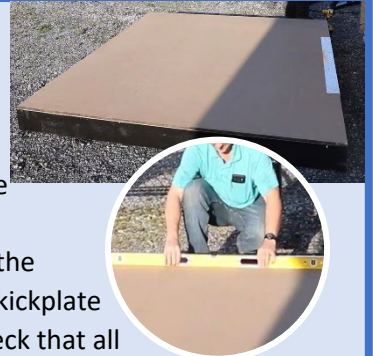
While completing the next steps, only cut the plastic bands for the piece(s) in the step, so that the other pieces stay in place until you need them.



Step 2: Set Floor Piece.

Level the ground where the shed will be.

If it is not level ground, place some blocks on the ground to make it level. Place the floor piece on the desired spot. The metal kickplate marks the door side. Check that all sides are level. Adjust the ground/blocks as needed.



Step 3: Place Square Wall without Door.

Make sure the studs are upright. The edge where the siding is even with the framing goes on top.

Place the wall on this mark. Push the wall in against the floor the whole way across. Fasten the pre-started screws into the floor.

Note: If it is a windy day, we recommend that someone holds the wall after the screws are fastened. If it is a still day, you do not need to hold the wall.



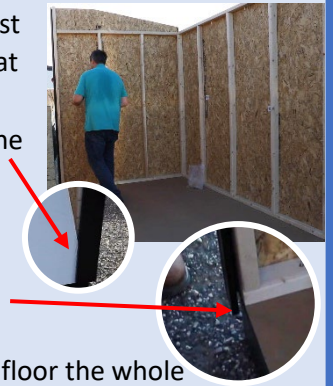
Step 4: Place Wall with Sloped Top.

The low side of this wall must be lined up with the wall that was just placed.

The corner trim goes over the siding of the first wall. The corners should meet inside. The edge of the wall should be flush with the framing of the floor.

Push the wall in against the floor the whole way across. Fasten the pre-started screws in the wall into the floor.

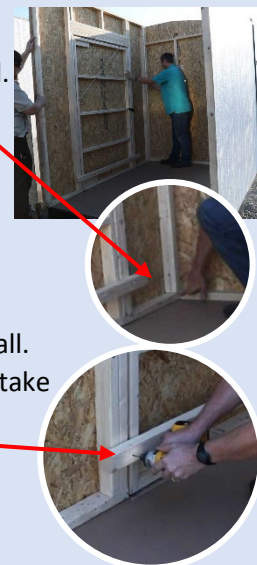
Make sure the corners meet at the top of the walls outside. Fasten the pre-started screws in the stud of the first wall into this wall.



Step 5: Place Wall with Door.

Slide the siding in behind the trim on the corner of the previous wall. The wall corners should meet.

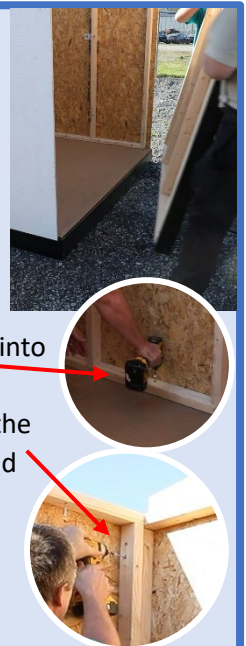
Push the wall in against the floor the whole way across. Fasten the pre-started screws into the floor. Make sure the two walls are tight against each other. Fasten the pre-started screws into the wall. Once all the screws are fastened, take the brace off on the inside of the door by removing the screws.



Step 6: Place the Final Wall.

Make sure the low side of this wall is lined up with the low side of the other wall. Place the trim over the siding and slide the wall in against the other two walls and the floor. Inside the shed, make sure the wall is tight in against the floor. Fasten all pre-started screws into the floor.

Make sure the wall is tight against the back wall, and fasten the pre-started screws along the stud. Repeat for the side against the front wall.



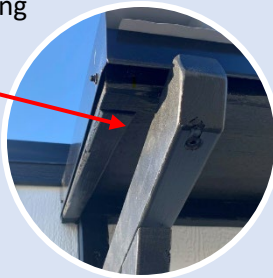
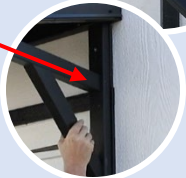
Step 7: Install the Door Roof Overhang.

Included are two braces for the roof overhang. The one with the notch-out will be placed on the door's right side, with that notch-out over the hinge.

Lift the roof piece up away from the wall. Place the brace with the notch-out against the wall, so it is flush on the wall between the roof overhang and the trim of the door. The brace should be even along the outside of the door's trim.

Fasten the top screw into the wall first, then the bottom screw, and finally the middle screw.

Place the second brace on the door's opposite side, even along the door's trim. Fasten the top screw, then the bottom screw, and finally the middle screw. Lastly, fasten the screws into the horizontal piece of the brace into the roof, making sure that underneath, there is half an inch (0.5") of space between the brace and the roof frame's inside edge. Repeat for both braces.



Step 8: Install the Roof.

Note: The overhang on the roof piece will always be on the low wall.

From the back of the shed, place the first piece of the roof on top of the shed, making sure to place it higher up on the high end and slide it back down into place, that way the face board overlaps the wall trim. Make sure that the sides of the roof are snug and locked in place and that each rafter of the roof is down against the top of the front and back walls. Make sure the side of the roof is tight against the wall.

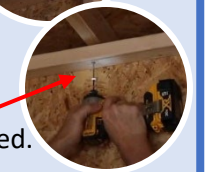
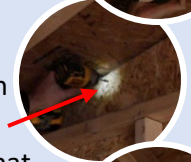
Take the second roof piece, place it on top of the shed and slide it down into place.

Ensure that the trim overlap on this piece doesn't bump the other roof piece, but lays on top of the other roof piece's trim. Make sure the two middle rafters are tight against each other.

Walk around the shed, verifying that the trim pieces and face board overlap properly. Go inside the shed and fasten the screws into those two middle rafters together.

Fasten in the short black screws on each side. If they fell out during shipping, get more from the bag that has extra. Do this on each side.

Fasten screws up into all rafters, on both the front and back ends of the shed.



Step 9: Door.

If one side of the door is closer to the trim than another, lift one side of the shed accordingly and block it up. That will correct the reveal.

If, either after assembly or years down the road, the door isn't fully closing against the frame, open the door to see the metal wire brace on the door. Using a wrench, adjust the brace to be either tighter or looser, depending on what is needed. That will allow the door to close properly again.

If the latch is not turning properly, go inside the shed. There is a screw on the latch. Adjust it by using an Allen wrench to turn that screw.



Step 9: Touch up the Paint.

Lastly, touch up any blemishes on the shed with the touchup paint that is included in the order.

