



Gold Bond®
Gypsum Board

Gold Bond® Ultra-Shield FS® 3/4" Gypsum Board

For Single Layer - Steel Stud and Cavity Shaftwall Systems

Save time, labor and material costs with Gold Bond® Ultra-Shield FS® 3/4" Gypsum Board. This efficient, UL Classified gypsum board is ideal for reducing the number of layers in multi-layer, fire-rated wall partitions and cavity shaftwall assemblies. The increased board thickness provides greater resistance to fire and reduced sound transmission versus a single layer of 5/8" Type X Gypsum Board.

Specify Ultra-Shield FS® 3/4" Gypsum Board for 2- and 3-hour wall partitions and 2-hour cavity shaftwall assemblies that enclose elevators, stairways and other vertical shafts.

It is also available with added mold and moisture resistance (Gold Bond® XP® Ultra-Shield FS® 3/4" Gypsum Board).

Gold Bond® Ultra-Shield FS® 3/4" Gypsum Board has achieved GREENGUARD Gold Certification



Provides Greater Fire Resistance

Specially formulated core has added fire-resistive qualities and is UL Classified for fire resistance.



Speeds Up Installation

Achieves 2-hour fire ratings on metal studs with a single layer of board on each side compared to two layers each side for a traditional 2-hour wall.

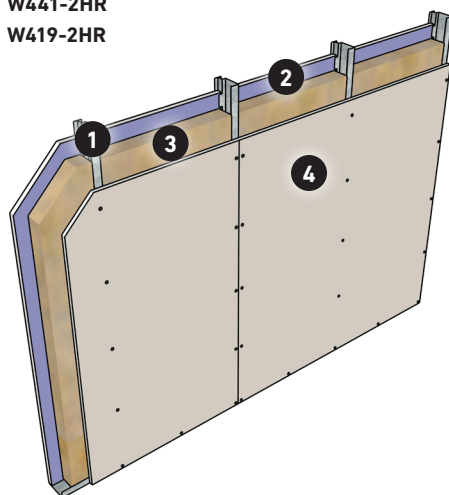


Reduces Costs

Lessen labor and material costs by using fewer layers (up to 10%).

FIRE-RATED ASSEMBLY DRAWINGS

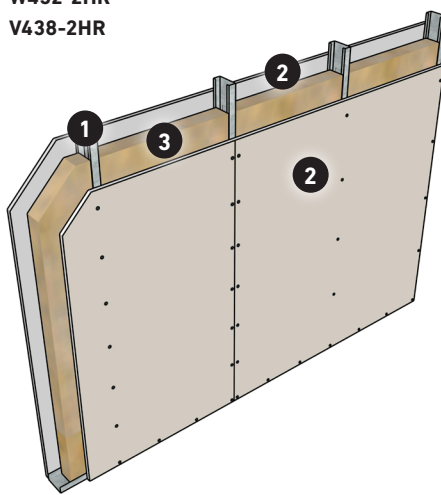
W441-2HR
W419-2HR



2-Hour Shaftwall Partition

1. 4" C-T or C-H studs 24" oc.
2. 1" eXP® Shaftliner
3. 3" mineral wool insulation
4. Ultra-Shield FS 3/4" Gypsum Board

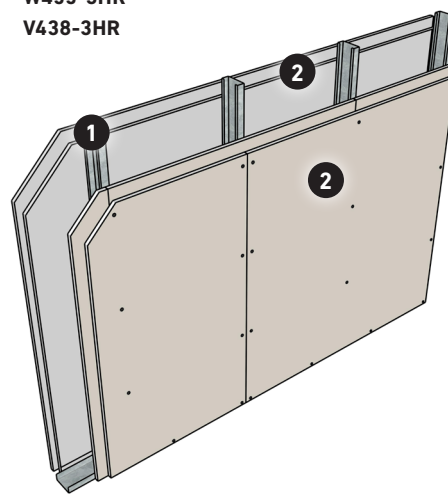
W432-2HR
V438-2HR



2-Hour Partition

1. 3-5/8" steel studs 24" o.c.
2. Ultra-Shield FS 3/4" Gypsum Board
3. 3" mineral wool insulation

W455-3HR
V438-3HR



3-Hour Partition

1. 1-5/8" steel studs 24" o.c.
2. Two layers of Ultra-Shield FS 3/4" Gypsum Board

TECHNICAL DATA

Physical Properties		Ultra-Shield FS 3/4" Gypsum Board
Thickness ¹ , Nominal		3/4" (19.1 mm)
Width ¹ , Nominal		4' (1,219 mm)
Length ^{1,4} , Standard		8' – 12' (2,438 – 3,658 mm)
Weight, Nominal		2.85 lbs./sq. ft. (13.91 k/m ²)
Edges ¹		Tapered
Flexural Strength ¹ , Perpendicular		≥ 167 lbf. (74 N)
Flexural Strength ¹ , Parallel		≥ 56 lbf. (249 N)
Humidified Deflection ¹		≥ 5/8" (15.9 mm)
Nail Pull Resistance ¹		≥ 97 lbf. (432 N)
Hardness ¹ – Core, Edges and Ends		≥ 11 lbf. (49 N)
Bending Radius		N/A
Thermal Resistance ⁵		R = .64
Product Standard Compliance		ASTM C1396
Fire-Resistance Characteristics		
Core Type		Ultra-Shield
UL Type Designation		Ultra-Shield
Combustibility ²		Non-combustible Core
Surface Burning Characteristics ³		Class A
Flame Spread ³		15
Smoke Development ³		0
Applicable Standards and References		
ASTM C473 Standard Test Methods for Physical Testing of Gypsum Panel Products		
ASTM C518 Standard Test Method for Steady-State Thermal Transmission Properties by Means of the Heat Flow Meter Apparatus		
ASTM C840 Standard Specification for Application and Finishing of Gypsum Board		
ASTM C1396 Standard Specification for Gypsum Board		
ASTM E84 Standard Test Method for Surface Burning Characteristics of Building Materials		
ASTM E119 Standard Test Methods for Fire Tests of Building Construction and Materials		
ASTM E136 Standard Test Method for Behavior of Materials in a Vertical Tube Furnace at 750°C		
Gypsum Association, GA-214, <i>Recommended Levels of Finish for Gypsum Board, Glass Mat and Fiber-Reinforced Gypsum Panels</i>		
Gypsum Association, GA-216, <i>Application and Finishing of Gypsum Panel Products</i>		
Gypsum Association, GA-238, <i>Guidelines for Prevention of Mold Growth on Gypsum Board</i>		
Gold Bond Building Products, LLC Manufacturer Standards, <i>NGC Construction Guide</i>		

1. Specified values per ASTM C1396, tested in accordance with ASTM C473.
2. Tested in accordance with ASTM E136.
3. Tested in accordance with ASTM E84.
4. Please consult your local sales representative for all non-standard lengths and widths.
Minimum order requirements may apply.
5. Tested in accordance with ASTM C518.



National Gypsum Company is the exclusive service provider for products manufactured by Gold Bond Building Products, LLC.

Gold Bond® Ultra-Shield FS 3/4" Gypsum Board is manufactured by Gold Bond Building Products, LLC.



Gold Bond®
Building Products

goldbondbuilding.com