

the radiant[®] collection

Smart Tru-Universal Dimmer, Wi-Fi



before you start

Review this guide in its entirety. Consult an electrician with any questions or if you are unsure of your abilities.

Warning: Incorrect installation could result in death, serious injury, and/or damage to your home or devices.

Caution: To reduce the risk of injury and/or overheating and damage to other equipment:

- For dry, indoor use only.
- Do not use to power medical equipment.
- Use ONLY with dimmable lighting loads.
- Do not use with loads exceeding the device load rating.
- Connect the smart dimmer to a 120 VAC, 60 Hz power source ONLY.
- Always use copper wire to install the smart dimmer & follow all applicable local & national electrical codes.

Visit www.legrand.us/radiant/smart-lighting/support for support.

what you need

REQUIRED:

- ⊕ Phillips-head screwdriver
- ⊖ Flat blade screwdriver

YOU MAY ALSO NEED:

Voltage tester, pliers, wire cutter, wire stripper, electrical tape, flashlight, wiring leads (included), and wire nuts (included)

SCAN TO WATCH THE
INSTALLATION VIDEO

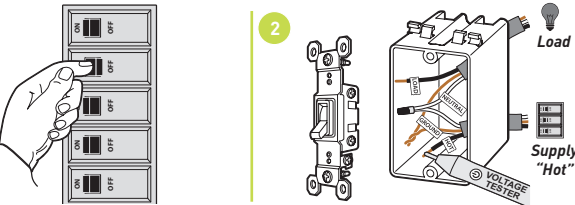


installation & setup

1 | turn off power to device at circuit breaker

Flip existing light switch multiple times to confirm power is off.

NOTE: Ensure power is off to all devices in electrical box.



2 | remove existing device

Check for the following wires:

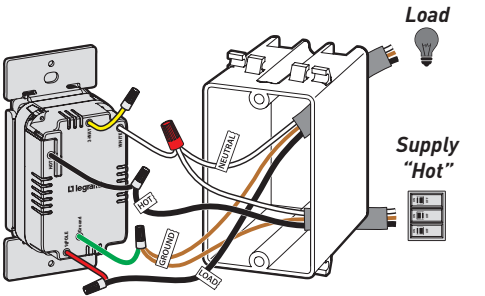
- a HOT or LINE: Receives power from the circuit box. Referred to as "hot" for the purposes of this guide. Do not touch or let "hot" wires contact other wires.
- b LOAD: Directs power to your light(s).
- c NEUTRAL: Creates a path to return current to the power source when the device is off. Required for your switch installation.
- d GROUND: Provides a safe path for electricity in the event of a short circuit.
- e TRAVELER: If more than one switch controls the light, an additional wire will be in the box that "travels" to the other switch. Not used in single dimmer applications. For multiple dimmer applications see 3b.

3a | wire smart dimmer

Use the wire nuts provided to secure the wires together.

- a Connect the WHITE neutral wire on the dimmer to the neutral wires in the box, using the red wire nut.
- b Connect the LOAD wire on the dimmer to the load wire in the box.
- c Connect the HOT wire on the dimmer to the hot wire(s) in the box.
- d Connect the GREEN ground wire on the dimmer to the ground wire(s) in the box.
- e If the light is controlled with only one switch, use a wire nut to cap the YELLOW traveler wire on the device and proceed to step 4.

NOTE: If the light is controlled by two or more dimmers (multi-location), connect the YELLOW wire to the remaining traveler wire in the box and see 3b for instructions on installing the HMR multi-location dimming remotes.



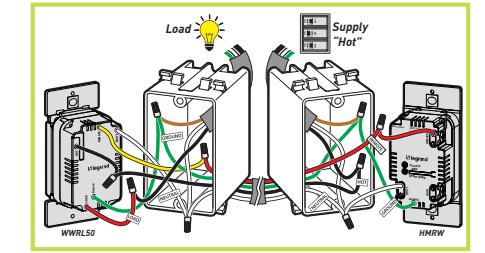
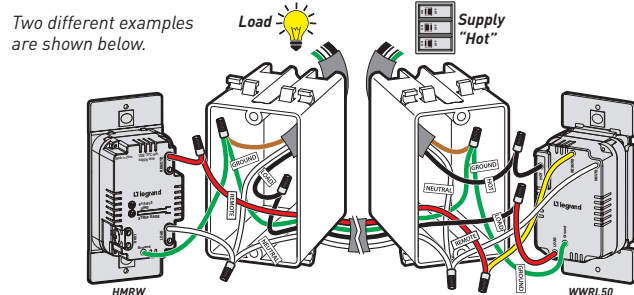
3b (optional) | wire HMR multi-location dimmer

If you have multiple dimming locations, use the radiant HMR multi-location dimming remotes. Install within 50 feet of the smart dimmer.

- a The HMR's remote dimmer's red screw is electrically connected to the WWRL50 Smart Dimmer's yellow traveler wire.
- b A neutral connection is connected to either of the HMR's connections labeled load.
- c Connect the GREEN ground wire on the switch to the ground wire(s) in the box.

NOTE: Use a wire nut to cap any extra wires.

Two different examples are shown below.

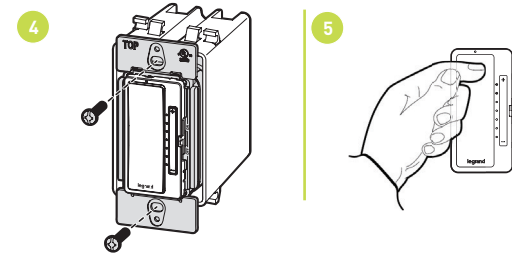


SCAN TO WATCH THE
INSTALLATION VIDEO



4 | secure smart dimmer

- a Fold wires into electrical box, taking care not to pinch a wire.
- b Use included screws to secure smart dimmer to electrical box. Do not fully tighten the screws.



5 | test the smart dimmer

NOTE: See getting to know your switch section for feature details.

Turn the power back on at the circuit breaker, press switch to turn light on/off and use the dimmer paddle to adjust the level of your light(s).

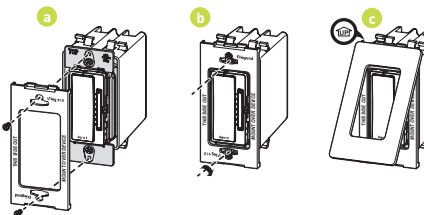
TROUBLESHOOTING TIP:

If the device is not powering check wiring to determine if you have reversed the "HOT" and "LOAD" wiring.

6 | attach wall plate

- a Use the sub-plate screws (provided) to secure the sub-plate to the smart dimmer.
- b Tighten device screws to secure smart dimmer to the electrical box.
- c Angle the UP end of the wall plate over the top edge of the sub-plate. Push the screwless wall plate down and in until it "snaps" into place over the sub-plate.

NOTE: To remove the wall plate, place the tip of a flat blade screwdriver into the slot under the wall plate and twist gently.



7 | set up your system

- a Download and launch the Smart Lights, Wi-Fi app by Legrand. The app is available on the App Store or on Google Play.

SCAN TO DOWNLOAD



GET IT ON
Google Play

Download on the
App Store

- b Connect your smart dimmer to your home network by following the step by step instructions in the app.
- c Use the app to control your smart dimmer.




SCAN TO WATCH HOW
TO SET UP THE APP



getting to know your dimmer

Item	Name	Description
1	Paddle Switch	<ul style="list-style-type: none">Press the top of the paddle to turn light on. Double-tap to raise the dimming percentage to 100%.Press the bottom of paddle to turn light off.
2	LED Locator Light	<ul style="list-style-type: none">Indicates the current state of device. Refer to "LED Locator Light Explanations" for detail.
3	Dimmer Paddle / LED Light Level	<ul style="list-style-type: none">Controls and displays the dimming percentage.Press (+/-) to adjust light in 2% increments. Hold (+/-) to adjust light in 20% increments.
4	Air Gap Switch	<ul style="list-style-type: none">Completely turns off the dimmer. Use when changing light bulbs.

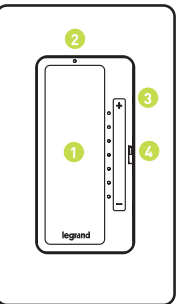
LED LOCATOR LIGHT EXPLANATIONS

LED Color	State of Light	Explanation
	Blinking Amber	Device is attempting to connect to the network.
	Solid White	Device is connected to your network and is switched off.
	Blinking Red	Warns of an overload or short circuit while your device is on.

NOTE: Blinking white denotes device is updating

RESET TO FACTORY DEFAULT

Deleting a device from the app will reset it to factory defaults. To manually reset the switch to factory defaults press and hold the dim button for 10 seconds until you see the LED blink then release. The device will reset in about 20 seconds after release.



regulatory information

FCC NOTICE

This device complies with Part 15 of the FCC rules. Operation is subject to the following two conditions: (1) this device may not cause harmful interference, and (2) this device must accept any interference received, including interference that may cause undesirable operation.

This equipment has been tested and found to comply with the limits for a Class B digital device, pursuant to Part 15 of the FCC Rules. These limits are designed to provide reasonable protection against harmful interference in a residential installation. This equipment generates, uses, and can radiate radio frequency energy and, if not installed and used in accordance with the instructions, may cause harmful interference to radio communications. However, there is no guarantee that interference will not occur in a particular installation.

If this equipment does cause harmful interference to radio or television reception, which can be determined by turning the equipment off and on, the user is encouraged to try to correct the interference by one or more of the following measures:

- Reorient or relocate the receiving antenna
- Increase the separation between the equipment and receiver
- Connect the equipment into an outlet on a circuit different from that to which the receiver is connected
- Consult the dealer or an experienced radio/TV technician for help

This equipment complies with FCC radiation exposure limits set forth for an uncontrolled environment. This equipment should be installed and operated with a minimum distance of 20 cm between the transmitter's radiating structure(s) and the body of the user or nearby persons.

NOTE: Any changes or modifications to this device that are not expressly approved by the manufacturer will void the warranty and the user's authority to operate the equipment.

FCC ID: A3LCWAM210S

IC NOTICE

This device complies with Industry Canada license-exempt RSS standards. Operation is subject to the following two conditions: (1) this device may not cause interference; and (2) this device must accept any interference, including interference that may cause undesired operation of the device.

RF EXPOSURE STATEMENT

This equipment meets the SAR evaluation limits given in RSS-102 Issue 5 requirements at the minimum separation distance of 15 mm to the human body. Note: Any changes or modifications to this device that are not expressly approved by the manufacturer, will void the warranty and the user's authority to operate the equipment.

IC ID: 649E-CWAM210S

warranty

This product is warranted under normal use against defects in workmanship and materials for as long as you own it. If the product fails due to a manufacturing defect during normal use, return it for a replacement at the store where purchased or contact technical support at 1-877-833-3303.

A dated sales receipt must be provided for all replacement requests (legible copies are acceptable).

Additional warranty details are available at <http://www.legrand.us> under your device's product page.

specifications

De-rating of the dimmer is not required for reverse phase applications. For forward phase applications in two-gang installations, de-rate incandescent, halogen, or electronic low voltage (ELV) loads to 600 Watts; in three-gang or greater installations, de-rate incandescent, halogen, or electronic low voltage (ELV) loads to 600 Watts on the outer units and 500 Watts on the center units.

RATING CHART

Load	Single-Gang	Dual-Gang	Three-Gang
Incandescent/Halogen/ELV (FWD)	700 W	600 W / 600 W	600 W/500 W/600 W
Incandescent/Halogen/ELV (REV)	450 W		
CFL/LED/EFL (FWD)	450 W / 3.8 A		
CFL/LED/EFL (REV)	250 W / 2.1 A		
Magnetic Low Voltage (FWD)	500 VA		

Legrand reserves the right to change specifications without notice.

NOTE: The dimmer ships in forward phase mode to accommodate most load types. For loads that require reverse phase dimming, such as ELV loads, adjust the phase using the app.

questions? we're here to help

PHONE: 1-877-833-3303
8:00 a.m. to 8:00 p.m. EST (M-F)

EMAIL: smartlighting@legrand.us

CHAT: <https://www.legrand.us/radiant/smart-lighting.aspx>

(Click on the  icon to open a dialogue box)



Legrand, North America
50 Boyd Avenue
Syracuse, NY 13209
1-877-833-3303
www.legrand.us

