

# WESTBRASS

Fine Decorative Plumbing Since 1935

Shower arm  
not included



Filter included

## DESCRIPTION

## QUANTITY

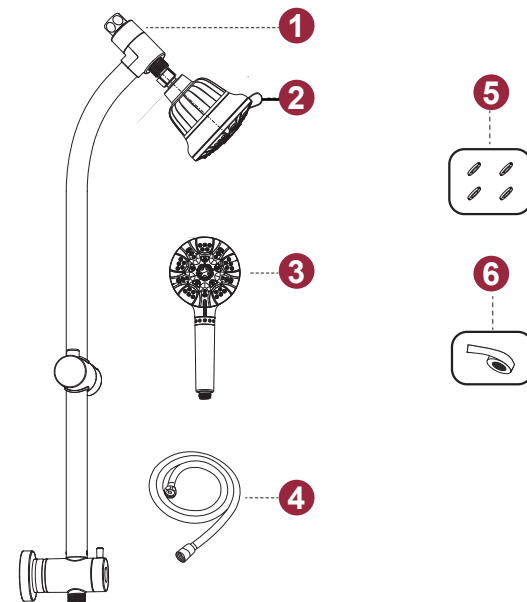
1. Bar, diverter with double sided adhesive tab and slider kit	1
2. Shower head	1
3. Hand shower	1
4. Shower hose	1
5. Rubber washers (4pcs in reserve)	1
6. Teflon tape	1

## CARE INSTRUCTIONS:

Rinse the product with clear water. Dry the product with a soft cloth.

## DO NOT:

Use abrasive cleaning, cloths, or paper towels. Use any cleaning agents containing acid, polish, wax, alcohol, ammonia, bleach, solvent or any other corrosive or harsh chemical cleansers.



## IMPORTANT:

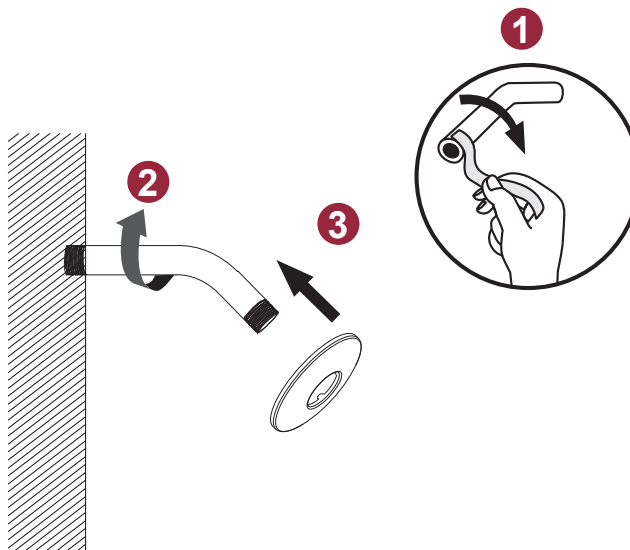
The slide bar is not to be used as a grab bar or for support. It is intended for holding a hand shower only, WE DENY ALL LIABILITY RELATED TO ANY ACCIDENT OR INCIDENT OR BREAKAGE FOLLOWING ANY USAGE IN BREACH OF THIS WARNING.

We would like to take this opportunity to thank you for purchasing Westbrass. It is our sincere hope that you are completely satisfied with your experience. We welcome any questions or comments you may have, and will be glad to assist you in future. Please read below instruction carefully before installation.

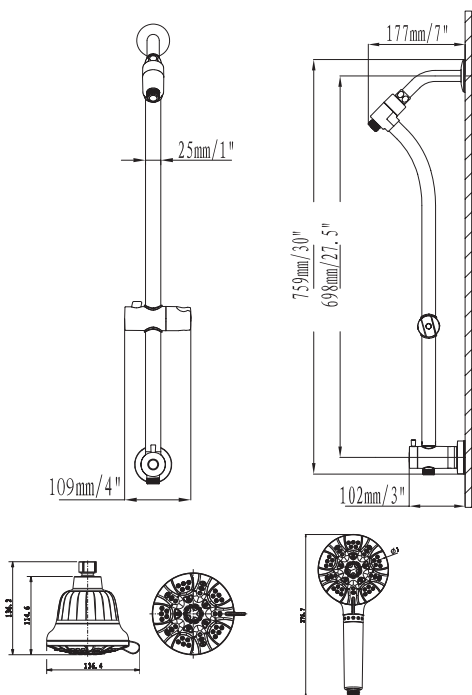
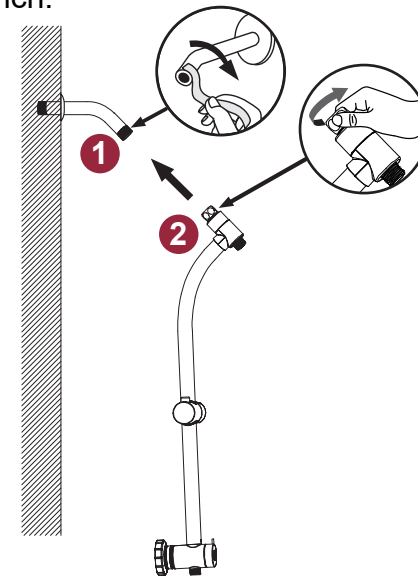
- 1 Apply teflon tape to shower arm. Mount it into the wall clockwise by hand. Then fix flange to shower arm.

## IMPORTANT:

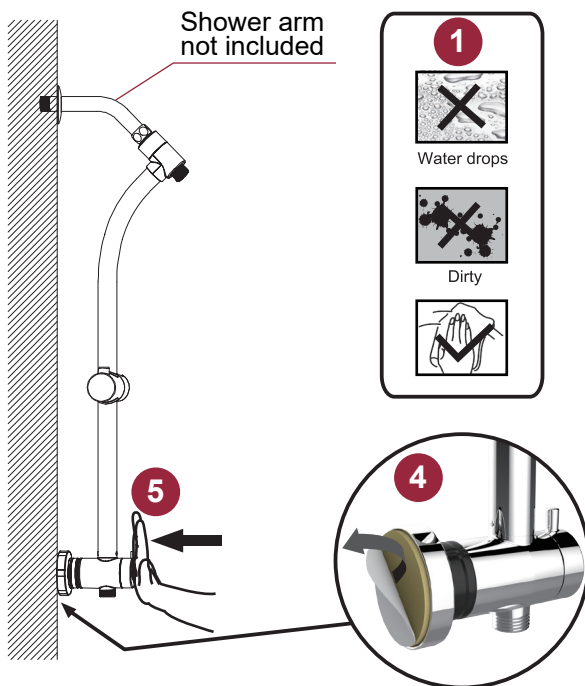
SHOWER ARM IS NOT INCLUDED



- 2 Apply teflon tape to shower arm. Attach the sliding bar with a built-in washer to the shower arm by rotating the hex nut clockwise by hand then lightly sung with a wrench.



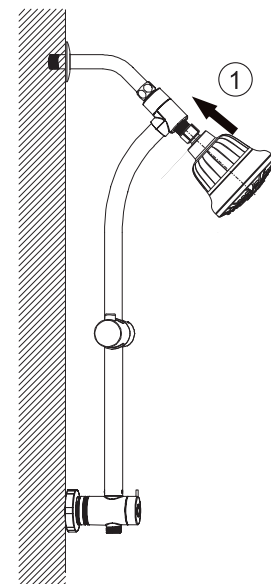
3



- 1 Make sure wall is clean and dry. Secure slide bar to the wall.
- 2 Make sure the bar is “**vertical**”.
- 3 Before remove the protective seal, mark the right position for the diverter.
- 4 Remove the seal from adhesive back.
- 5 Firmly press the diverter against wall surface.
- 6 Allow to dry 8 hours.

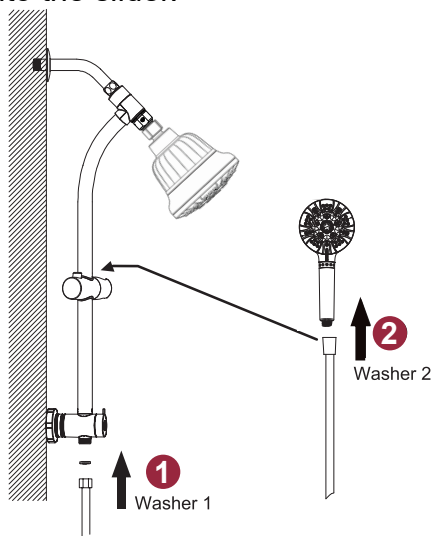
4

Attach the shower head with a built-in washer on to the sliding bar by rotating the shower head clockwise by hand.



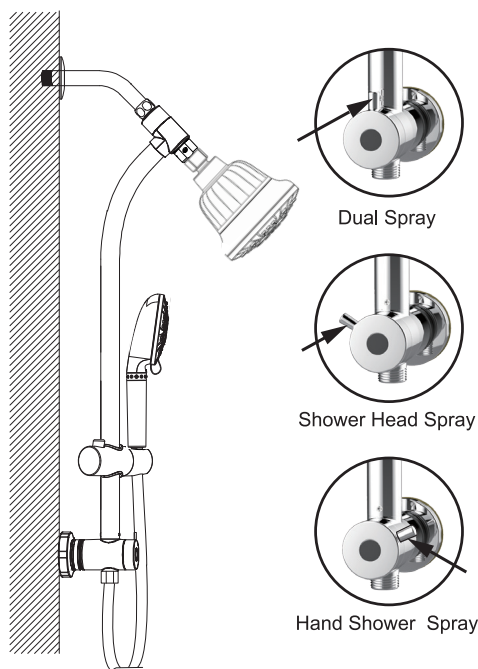
5

1. Attach the shower hose to the end of the sliding bar by rotating the hex nut of the shower hose by hand. 2. Connect the handheld shower and the shower hose by hand and put the hand shower into the slider.



6

3-way diverter functions exchange.



**WESTBRASS**  
Fine Decorative Plumbing Since 1935

**CATALOG**



WESTBRASS • 2429 E. Olympic Blvd., Los Angeles, CA 90021  
(213) 627-8441 • orders@westbrass.com • www.westbrass.com