

# ASHLEY PEDESTAL LAVATORY

CAT. NO  
3-916X



Faucet not included



Mounting hardware

W: 19- $\frac{3}{4}$ "  
D: 15- $\frac{1}{4}$ "  
H: 32- $\frac{1}{8}$ "

Column: 26- $\frac{1}{2}$ " x 6" x 7- $\frac{1}{4}$ "

## Interior Dimensions:

Basin interior:	15- $\frac{5}{8}$ " x 9- $\frac{1}{2}$ "
Basin depth:	5- $\frac{1}{2}$ "
Faucet and spout holes:	1- $\frac{1}{2}$ " & 2
Back of basin to center of faucet:	1- $\frac{1}{4}$ "
Back of basin to center of drain:	7- $\frac{3}{4}$ "
Mount bolts height:	29- $\frac{3}{4}$ "
Mount holes cc:	6"

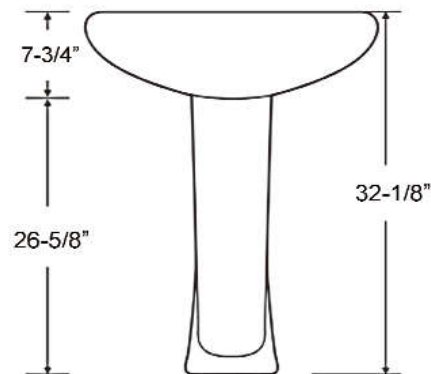
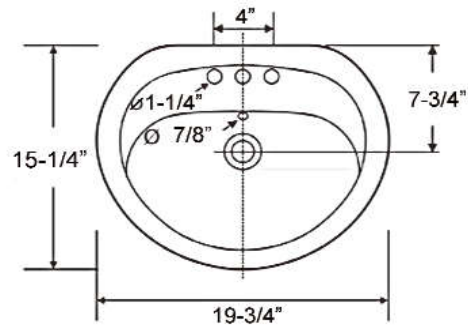
## Features:

- ▶ Made of Vitreous China
- ▶ Available pre-drilled for single hole (**3-9161**) or 4" centerset (**3-9164**)
- ▶ Pre-drilled overflow
- ▶ Mounting hardware included
- ▶ Back of column is open
- ▶ cUPC approved



Colors:  
**WH** White

**Meets or exceeds** the following specifications: ASME A112.19.2 2013 and CSA B45.1-13 for ceramic plumbing fixtures.



Dimensions of fixture are nominal and may vary within the range of tolerances established by ASME Standard A112.19.2. Dimensions and specifications subject to change without notice.