

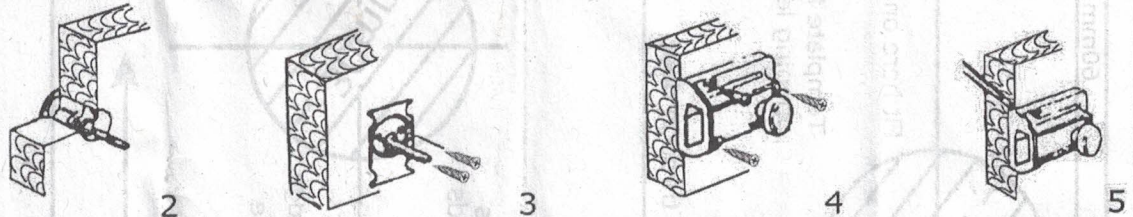
Installation Instructions

The lock is suitable for various kind of wooden doors. For door 35~55mm.

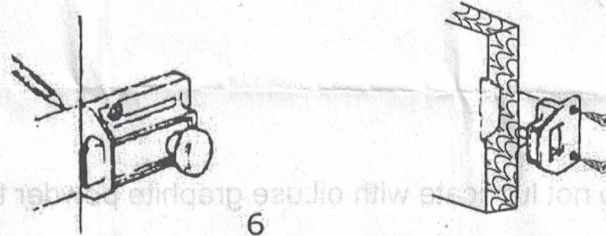
DIRECTIONS

1. Choose a right position according to the opening direction of the door: left wards or right wards. Make a mark from the edge exactly 60mm and drill a 30mm diameter hole through the door.

2. Remove the key, and insert the cylinder through the brass ring then put it into the hole.

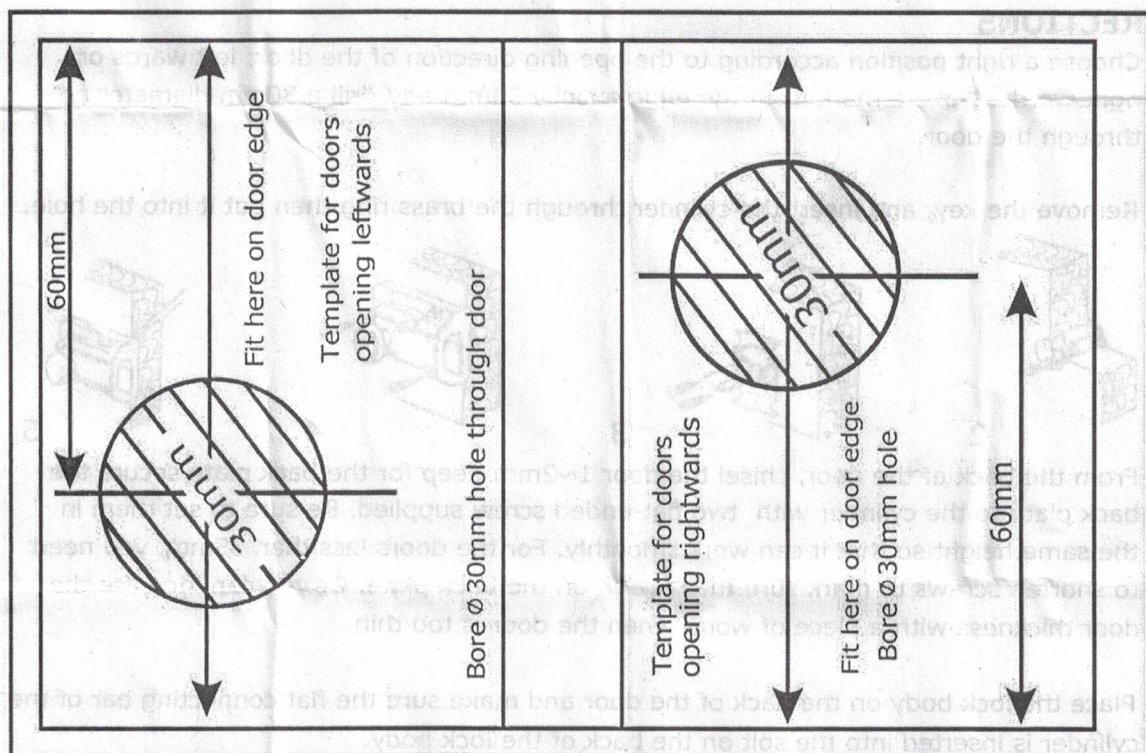


3. From the back of the door, chisel the door 1~2mm deep for the back plate, secure the back plate to the cylinder with two flat-ended screw supplied. Be sure to set them in the same height so that it can work smoothly. For the doors less than 35mm, you need to shorten screws to make sure they are fit on the back plate. Or you can increase the door thickness with a piece of wood when the door is too thin.
4. Place the lock body on the back of the door and make sure the flat connecting bar of the cylinder is inserted into the slot on the back of the lock body.
5. Mark the outline of the lips of the lock on the edge of doors and chisel a room to hold it on.
6. Place the lock body in its final position, and mark the position of the 3 fixing screws. Drill a bit at each of the three marks, and screw the lock body to the door at those three points, using the fixing screws provided.



7. Close the door gently and use the fitted lock as a guide. Mark out the position of the remaining component---the staple on the door frame. Chisel out the room in the door frame to hold the staple and fix it with the screws provided.
Now, your lock has been completed.

TEMPLATE



- 1.) See the template- drill 1 hole and mark for 3 screws.
- 2.) Insert cylinder with brass ring from front of door. put the bar through the door.
- 3.) Insert steel plate on the back of the door and fasten with 2 machine screws (cut to proper length).
- 4.) Screw latch on door.
- 5.) Locate strike over with latch.

MANTENANCE

Keep the cylinder groove clean. Do not lubricate with oil. use graphite powder to allow the key to move smoothly.