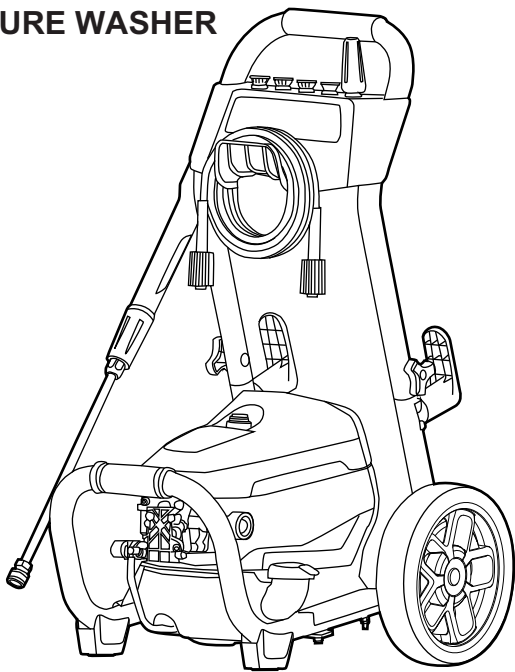
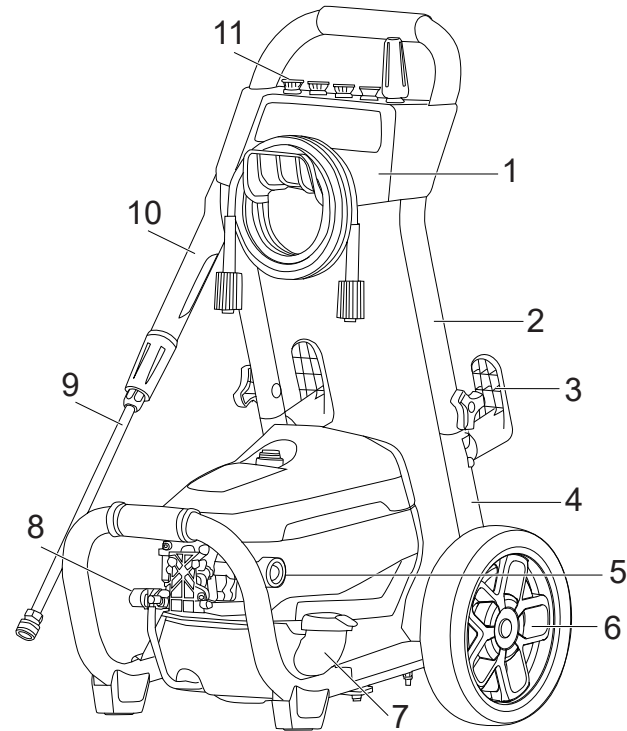


PRESSURE WASHER



Depending on the model purchased, packaging will contain different accessories and parts.  
Refer to the package for more details.

KNOW YOUR MACHINE

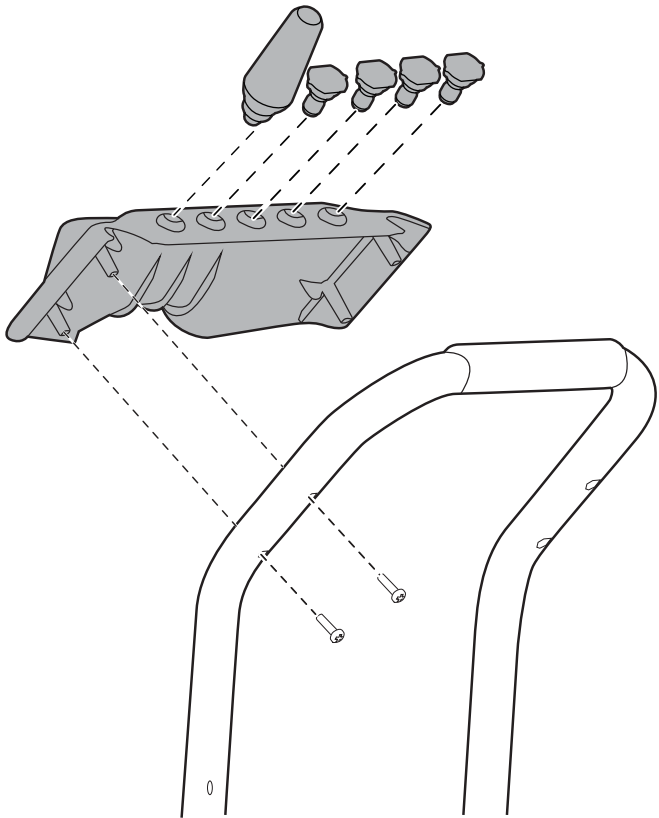


- 1. Upper panel
- 2. Upper handle
- 3. Cord storage arm
- 4. Lower handle
- 5. Water inlet
- 6. Wheel
- 7. Detergent tank
- 8. Water outlet
- 9. Spray wand
- 10. Spray gun
- 11. Spray tip

1

INSTALLATION

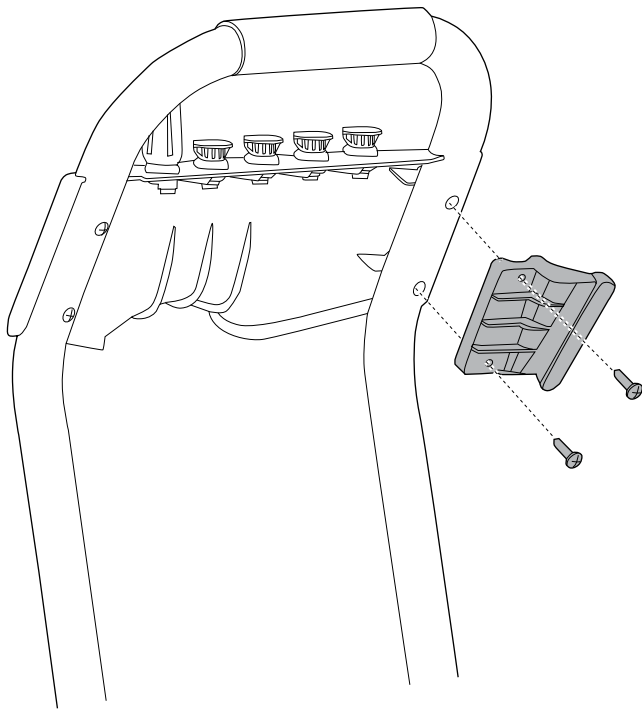
Install the upper panel and spray tips



2

INSTALLATION

Install the spray gun holder



3



Europe  
[www.greenworkstools.eu](http://www.greenworkstools.eu)



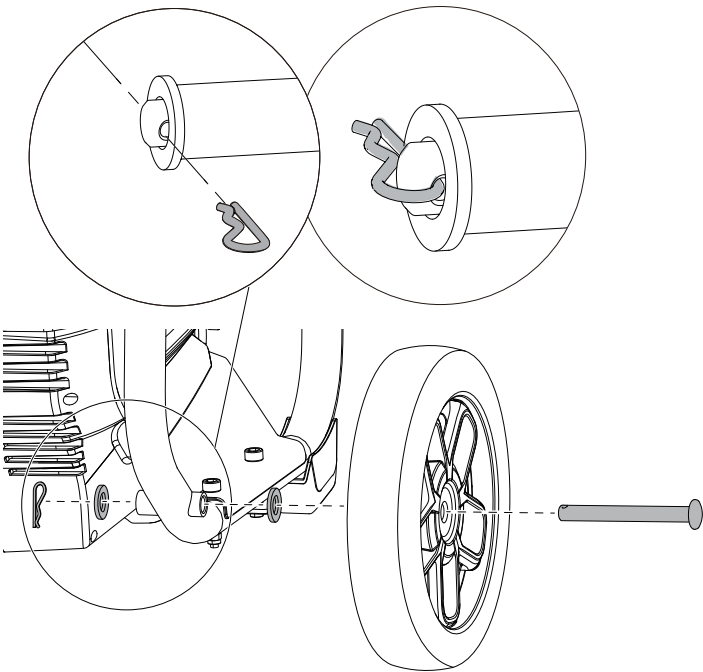
USA  
[www.greenworkstools.com](http://www.greenworkstools.com)



Canada  
[www.greenworkstools.ca](http://www.greenworkstools.ca)

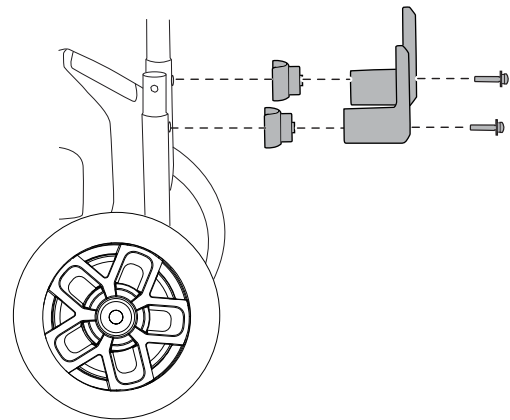
4

Install the wheels

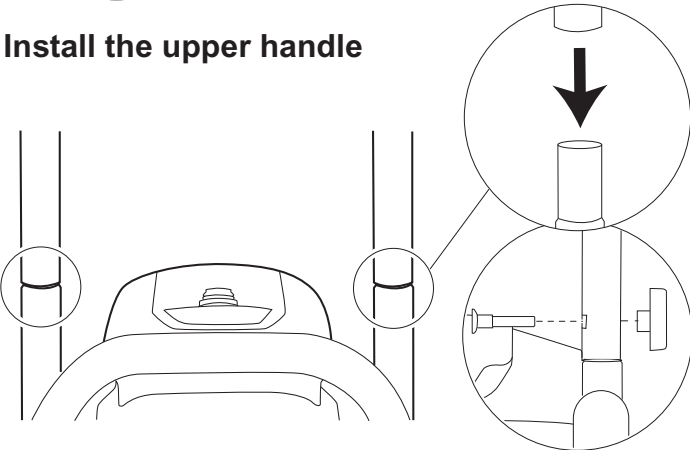


5

Install the power cord storage arms

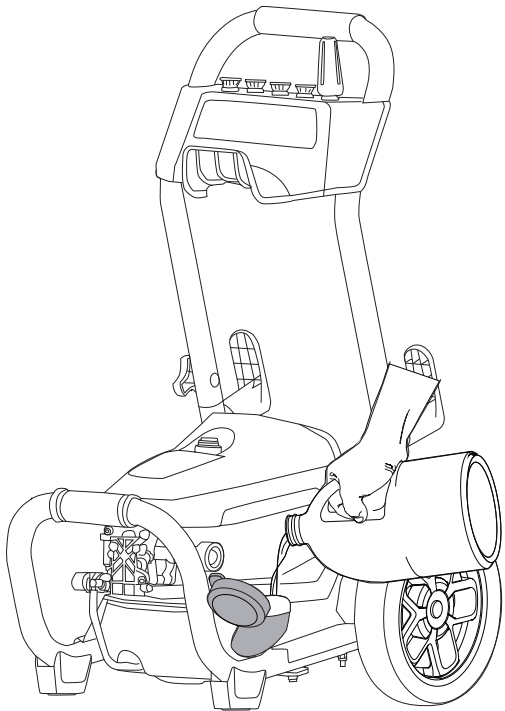


Install the upper handle



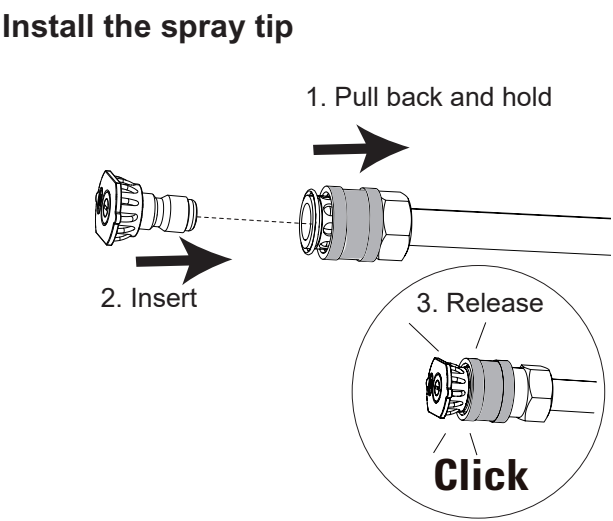
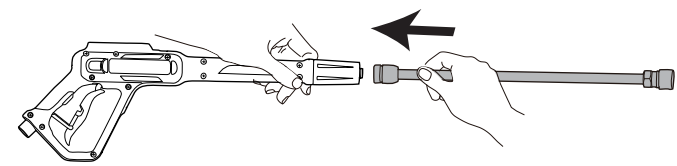
6

Add detergent



7

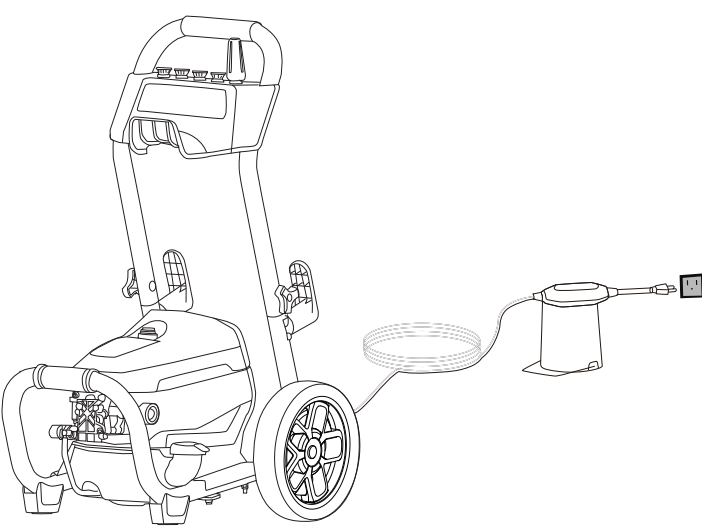
Install the spray wand



OPERATION

11

Connect the machine to power supply



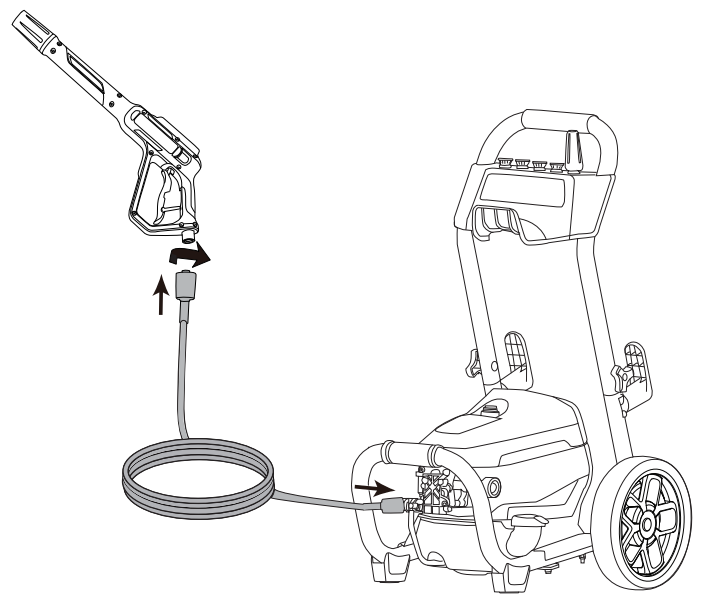
8

Spray tip type

Spray tip type	Spray Pattern	Uses	Surfaces
15°		Surface preparation, removing dirt, mildew, paint	Concrete, Brick, Asphalt, and hard surfaces
25°		Versatile washing, removing dirt without damage	Fences, decks, wood, siding
40°		Delicate cleaning tasks, suitable for car surfaces	Delicate surfaces, cars
SOAP		Applies cleaning solutions	Surfaces that require soap
		Powerful pinpoint for very intense cleaning	Metal or concrete; DO NOT use on wood

9

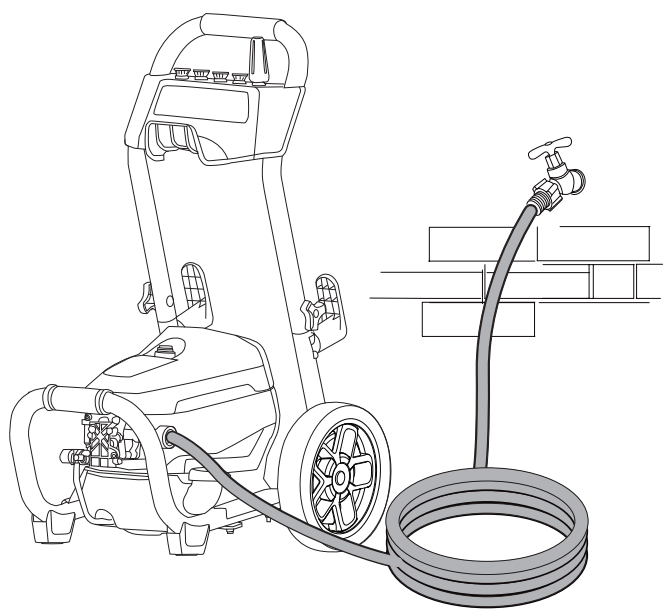
Install the high pressure hose



10

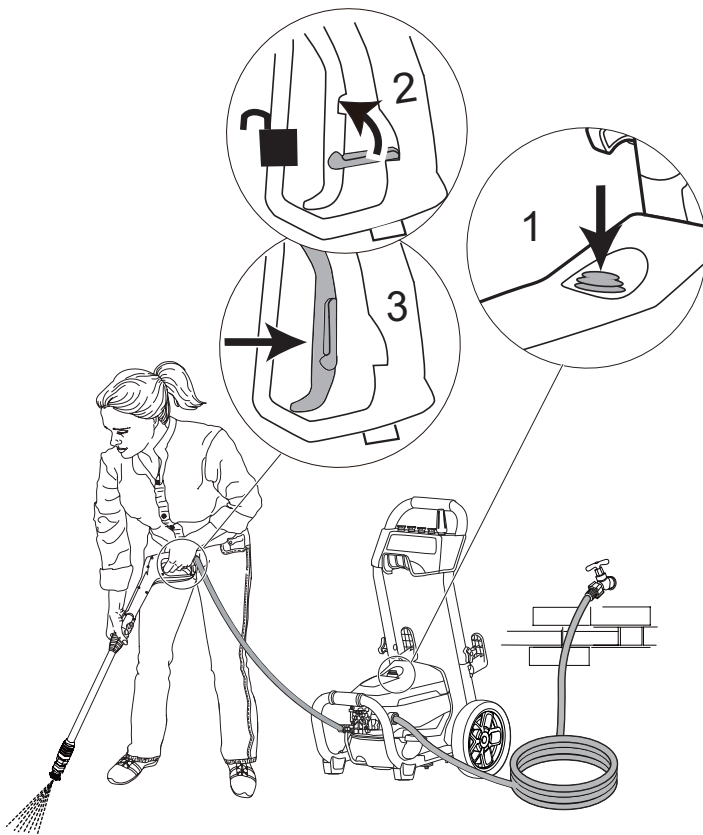
OPERATION

Connect the water supply to the machine



12

Start the machine

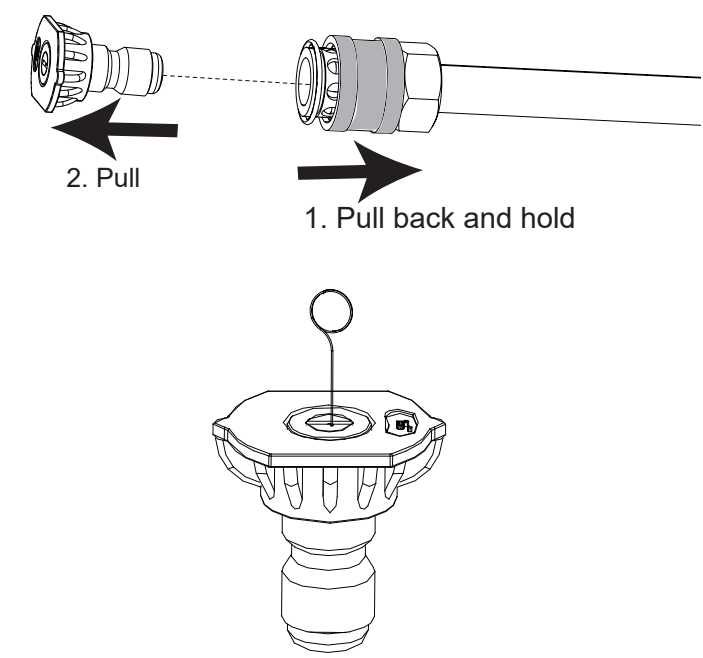


13

MAINTENANCE

Clean the spray tip

Note: Always stop the machine before clean spray tips.



14

Protect the pump

Note: Pump saver protects pressure washer pumps against freezing to save cold weather storage.

