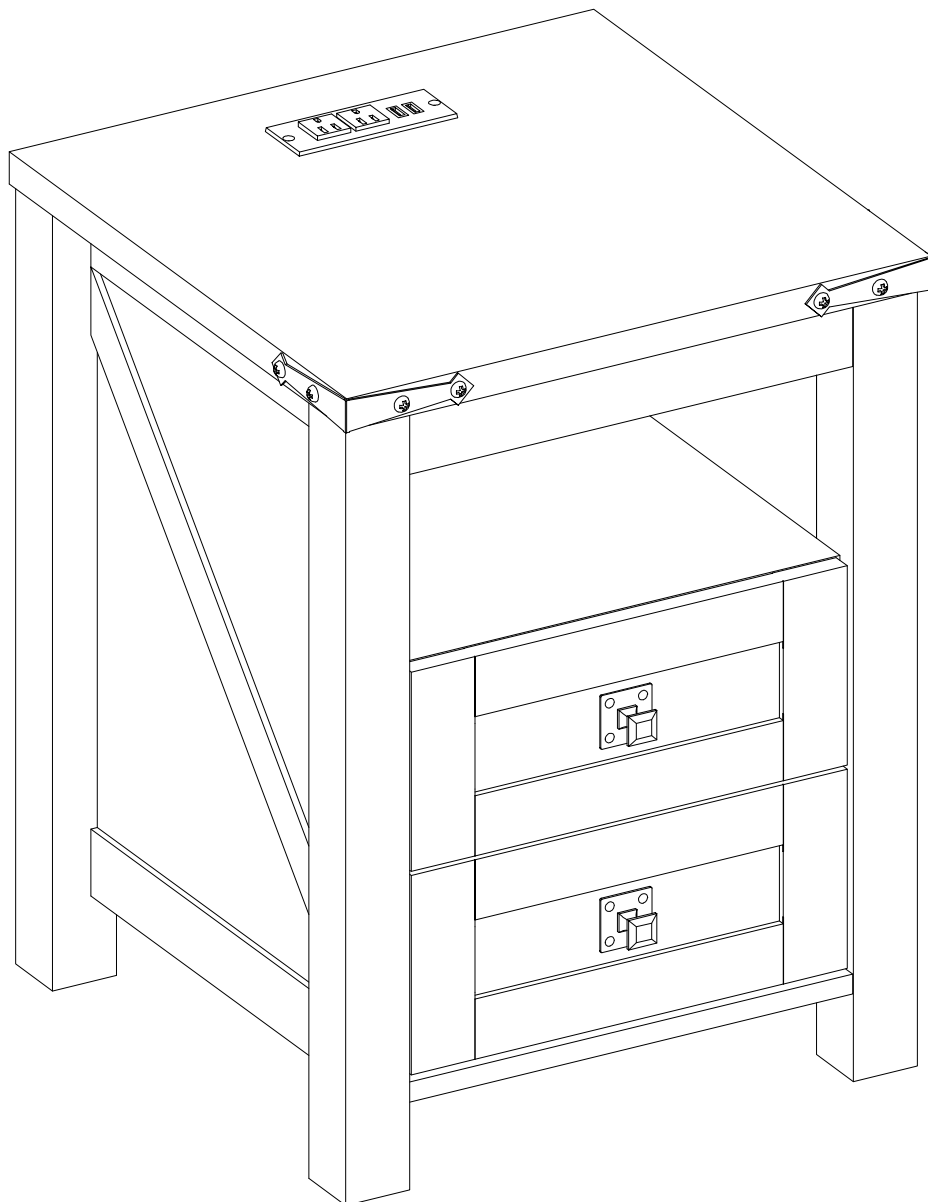


AI-BDCSTV2

Assembly Instructions



BDCSTV2

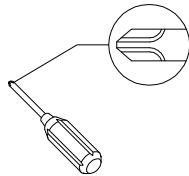


Scan for Help!
Assembly Guide/Customer Support

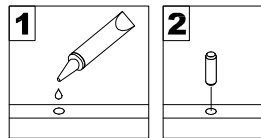
Date 2025-06-05 Rev.02-A

General Assembly Guidelines

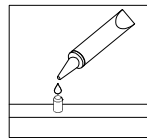
- I. Ensure that all parts and hardware are available before beginning assembly.
- II. Follow each step carefully to ensure the proper assembly of this product.
- III. Two people are recommended for ease in the assembly of this product.
- IV. A Phillips head screwdriver is required for the assembly of this product .



- V. The provided glue is to secure wood dowels in place . When first inserting dowels , locate the appropriate hole for the dowel , place a small amount of glue in the hole and insert the dowel . Wipe away excess glue immediately.

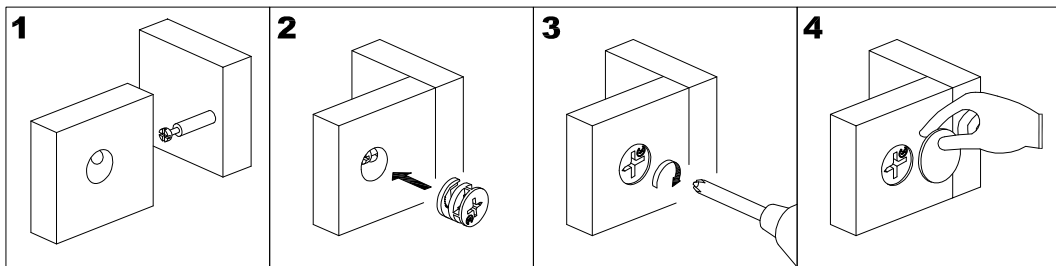


In future assembly steps when dowels are necessary to attach assembly parts together , place a small amount of glue on the end of the dowel before attaching parts together . Wipe away excess glue immediately.

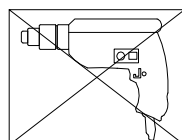


VI HOW THE KNOCK DOWN (KD) ASSEMBLY SYSTEM WORKS

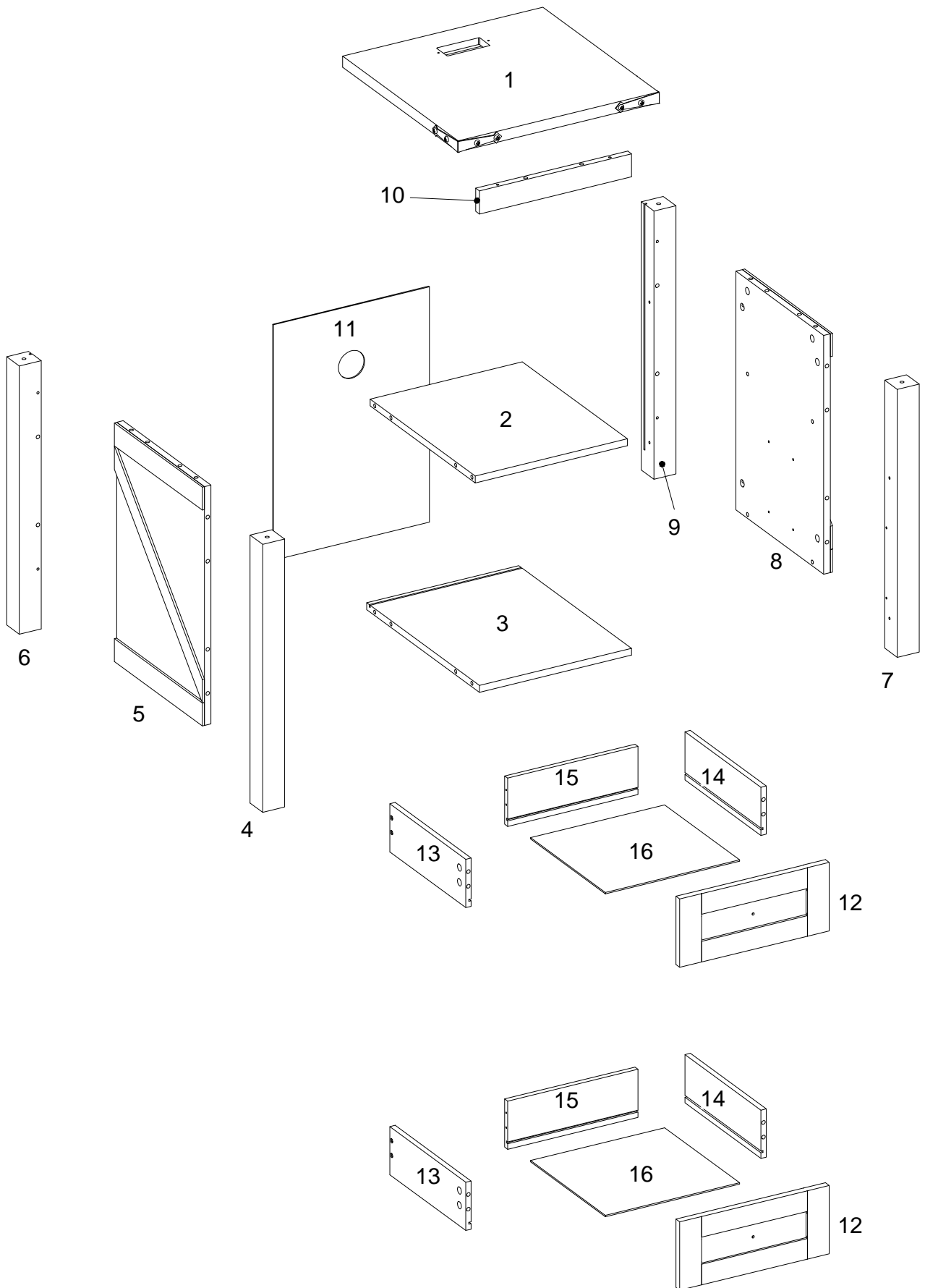
- 1.Screw the Cam Bolt into the pre-drilled hole on the panel. Make sure Cam Bolt goes into the pre-drilled hole on the end of panel for Cam Lock.
- 2.Insert the Cam Lock into the pre-drilled large hole on the panel. Make sure the arrow on the face of Cam Lock points towards Cam Bolt.
- 3.Take a Phillips screwdriver and rotate the Cam Lock clockwise to lock the Cam Bolt.
- 4.Use the sticker to conceal the Cam.








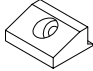


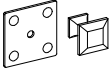

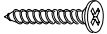
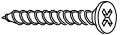
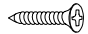


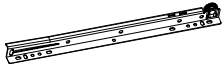
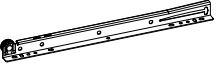
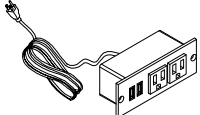
- VII. Power tools should not be used to assemble this product .

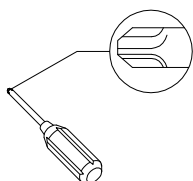


Parts List



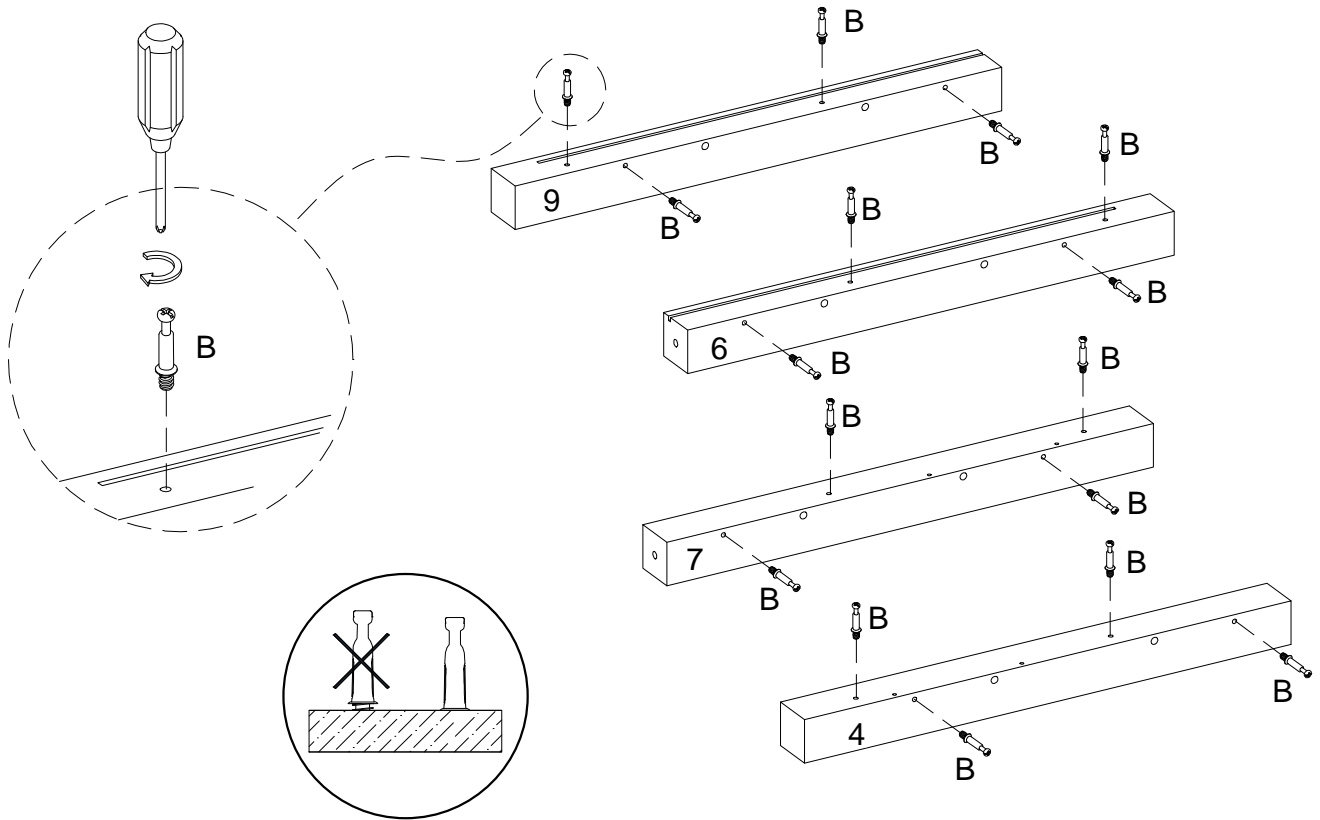
Hardware List

A		Ø8x30mm	Wooden dowel	26 pcs
B		Ø6x35mm	Cam bolt	28 pcs
C		Ø15x11mm	Cam lock	20 pcs
D		Ø30mm	Sticker	28 pcs
E			Glue tube	1 pc
F			Plastic wedge	4 pcs
G		Ø3x17mm	Flat-head screw	4 pcs
H		Ø4x12mm	Handle bolt	2 pcs
J			Handle	2 pcs
K		Ø15x9.5mm	Cam lock	8 pcs
L		Ø4x38mm	Screw	8 pcs
M		Ø4x44mm	Screw	2 pcs
N		Ø3.5x12mm	Screw	26 pcs
P		12"	Left cabinet member	2 pcs
Q		12"	Right cabinet member	2 pcs
R		12"	Left drawer runner	2 pcs
S		12"	Right drawer runner	2 pcs
T			USB Interface	1 pcs

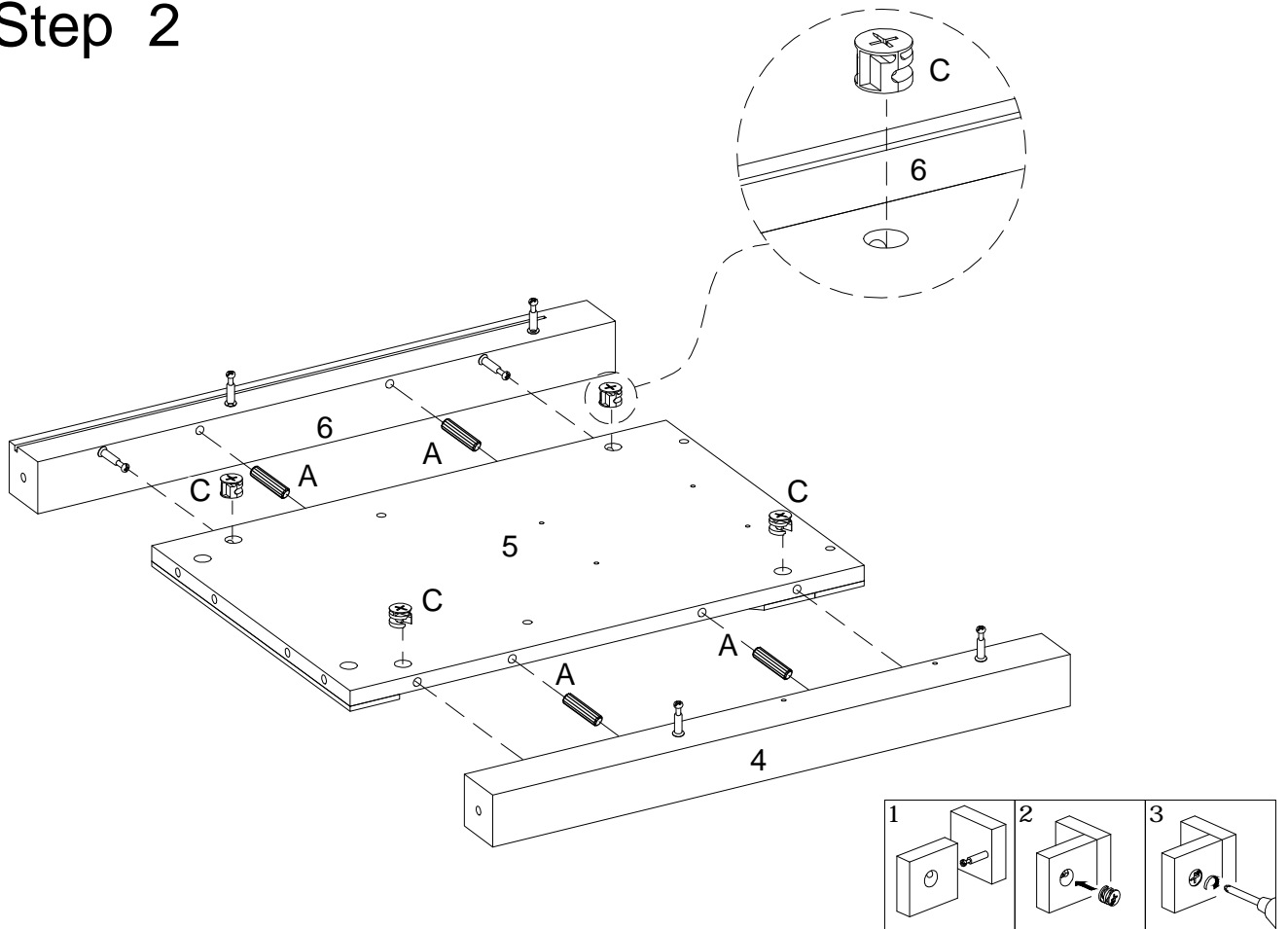


Philips head screwdriver required for assembly
(not included)

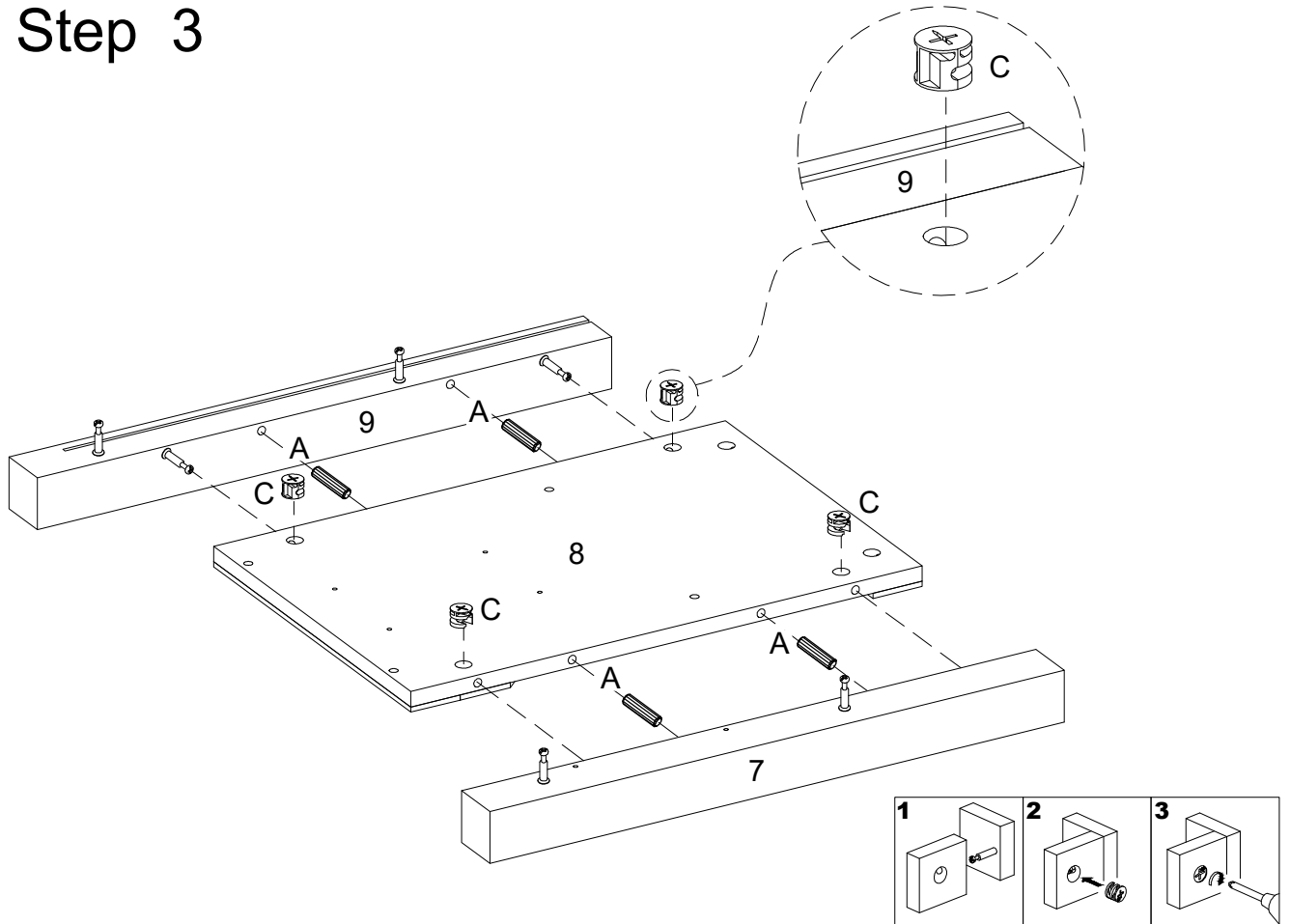
Step 1



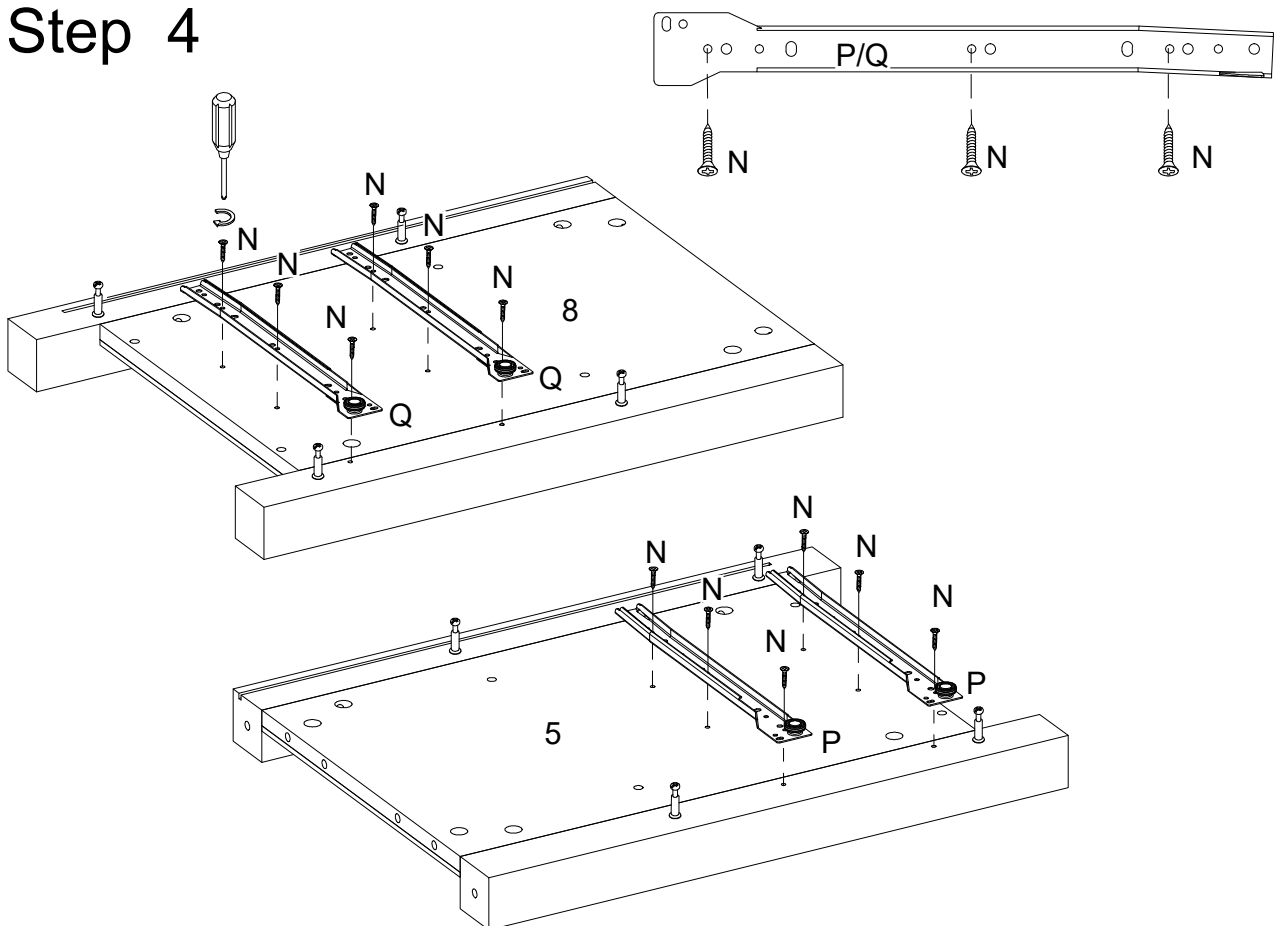
Step 2



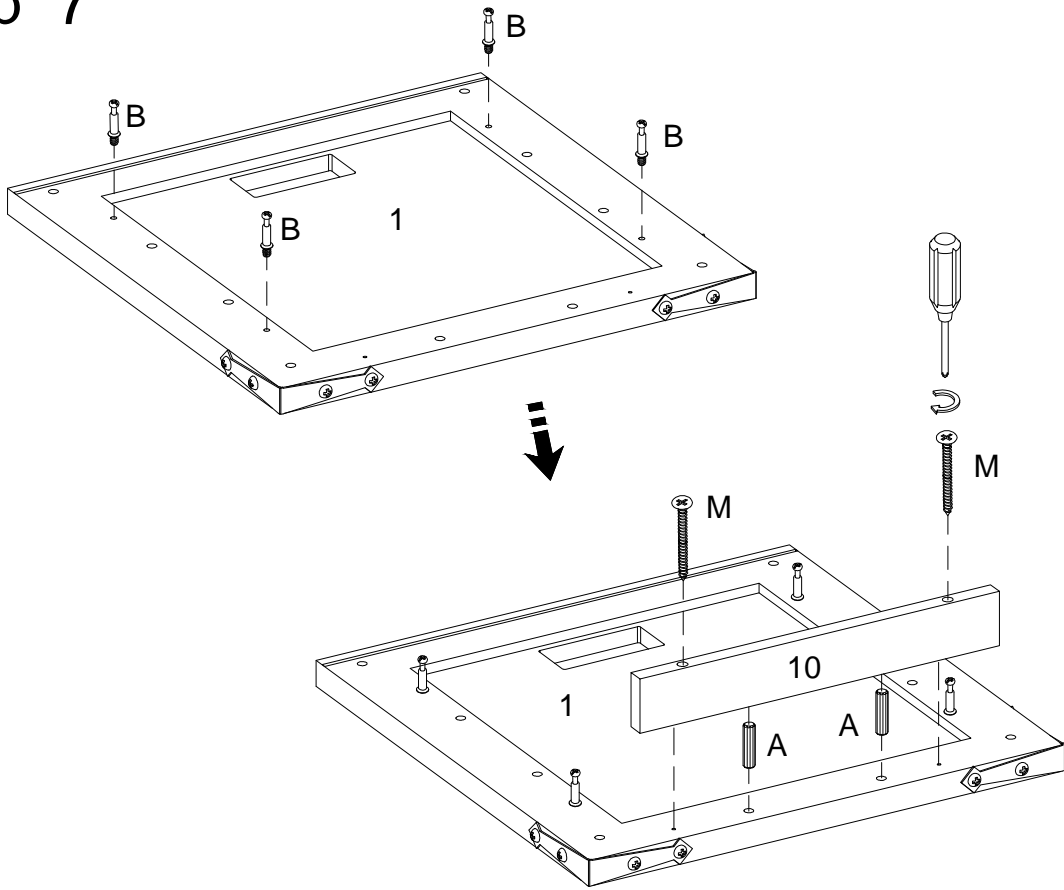
Step 3



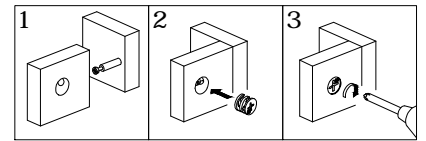
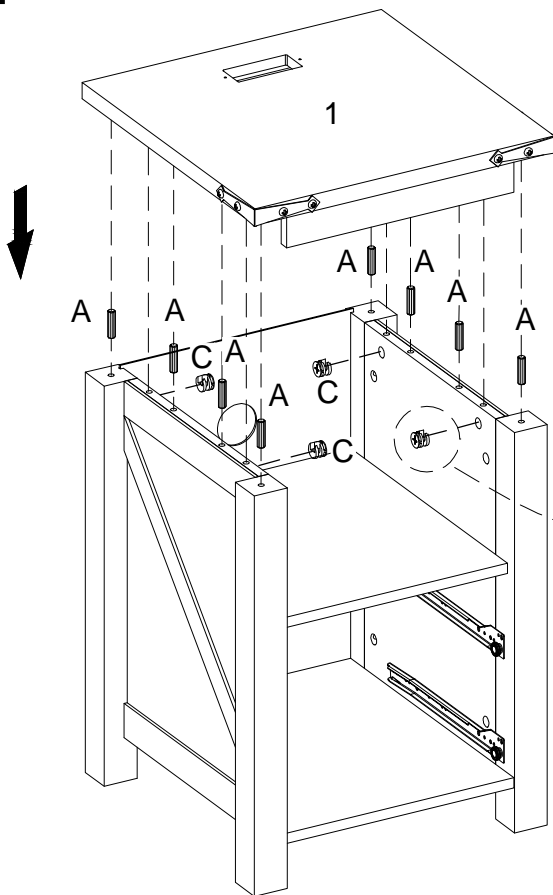
Step 4



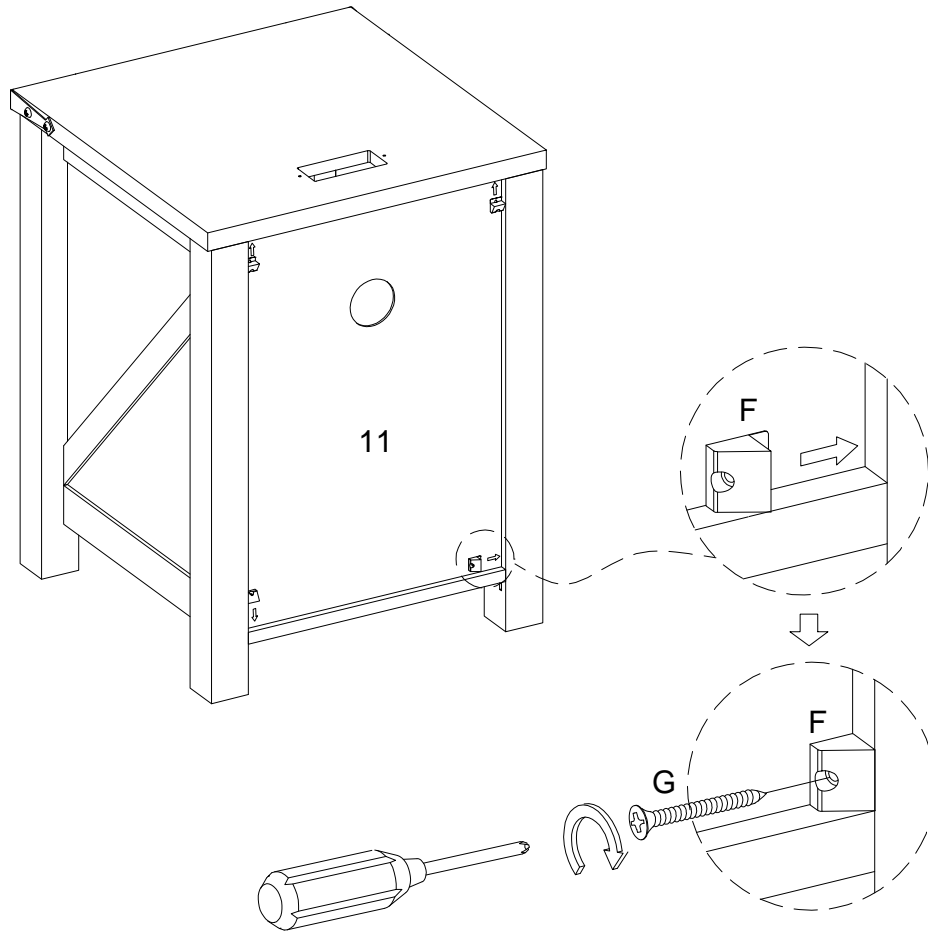
Step 7



Step 8

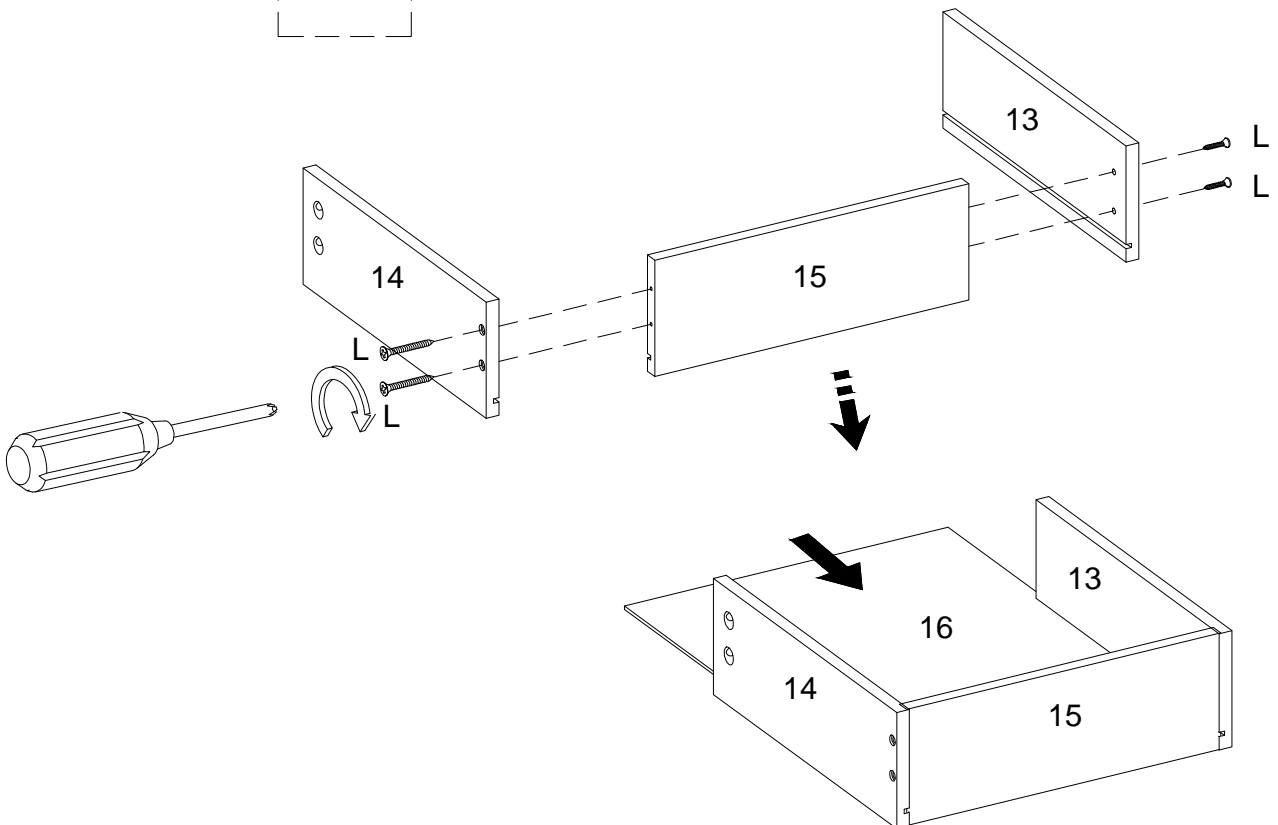


Step 9



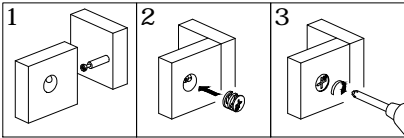
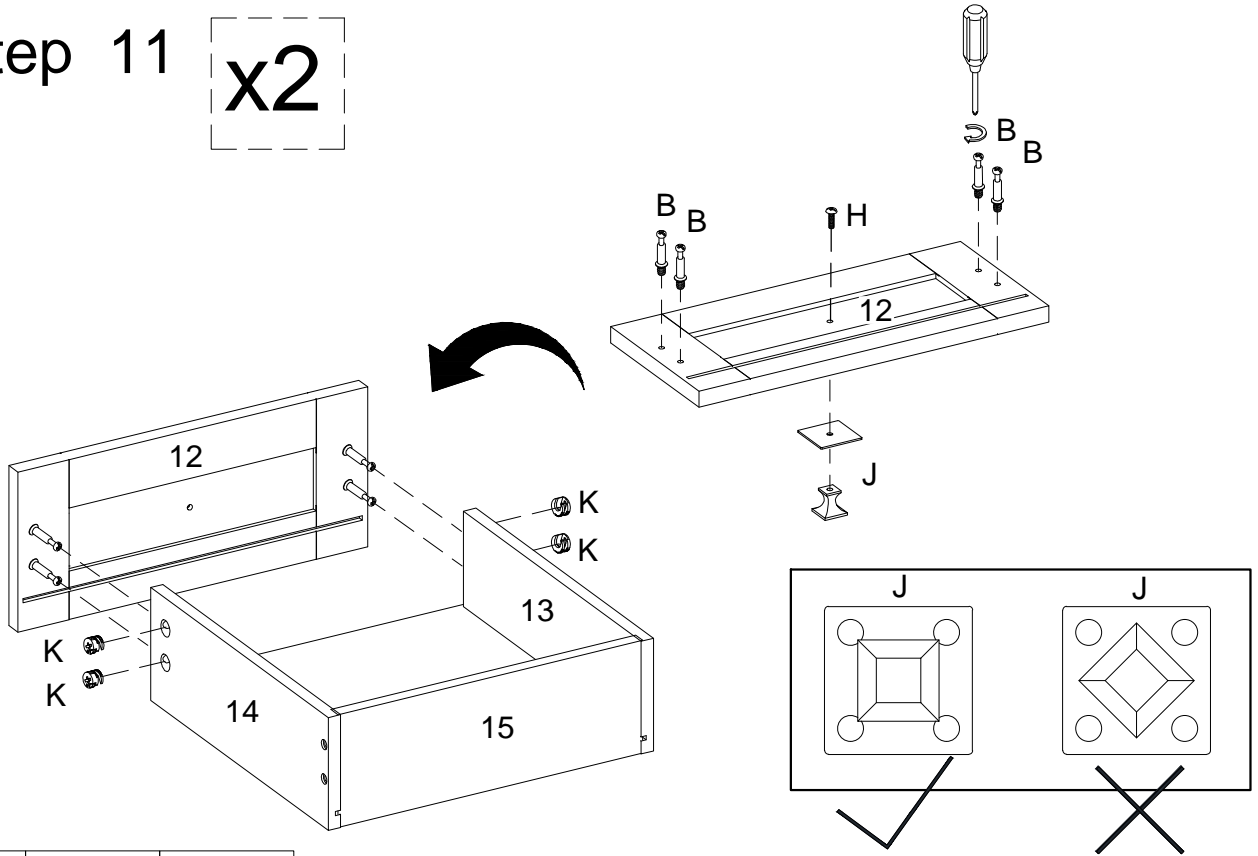
Step 10

x2



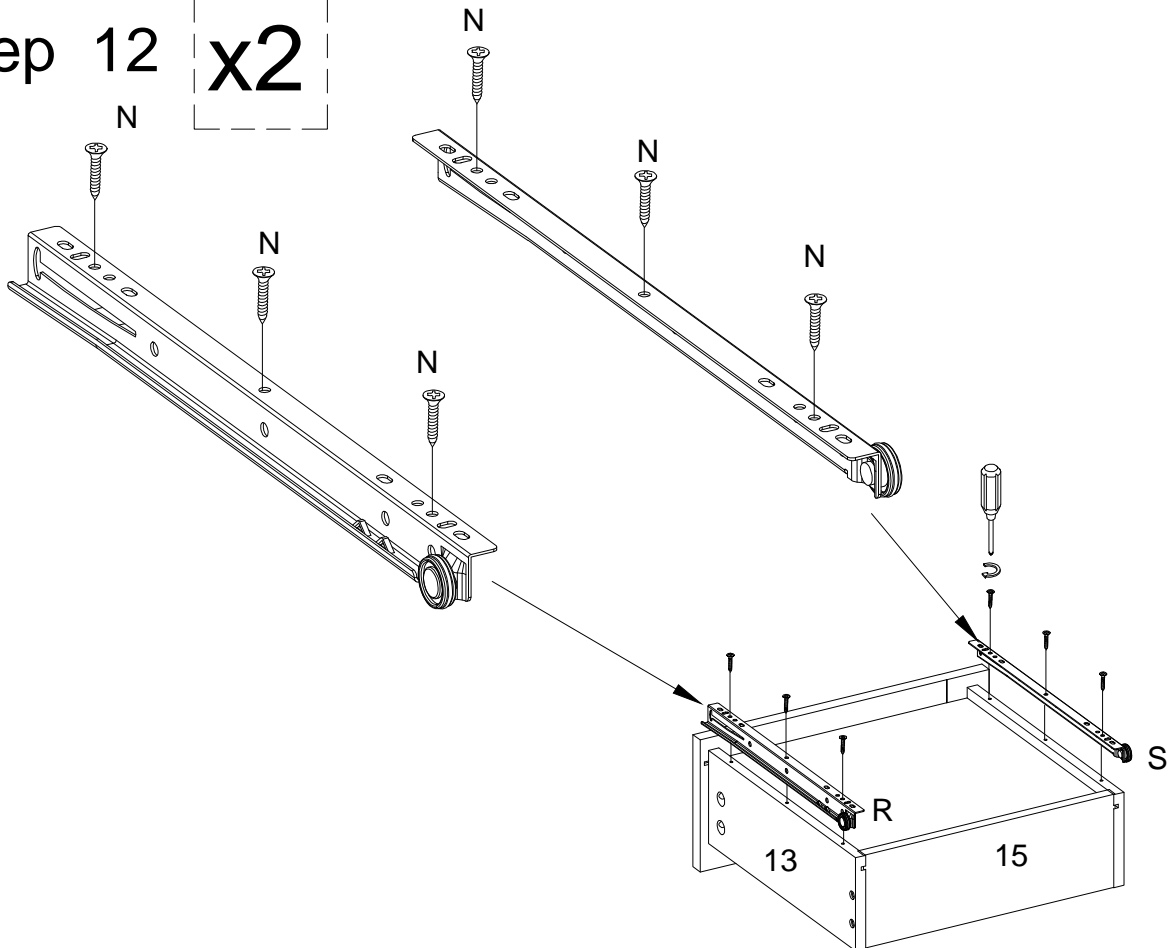
Step 11

x2

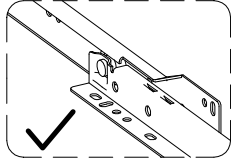
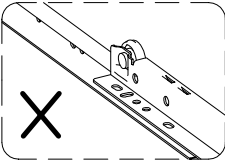
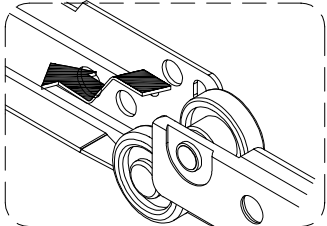
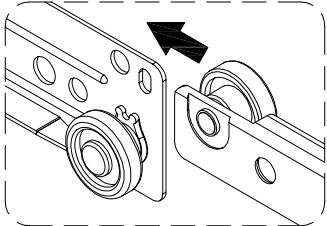
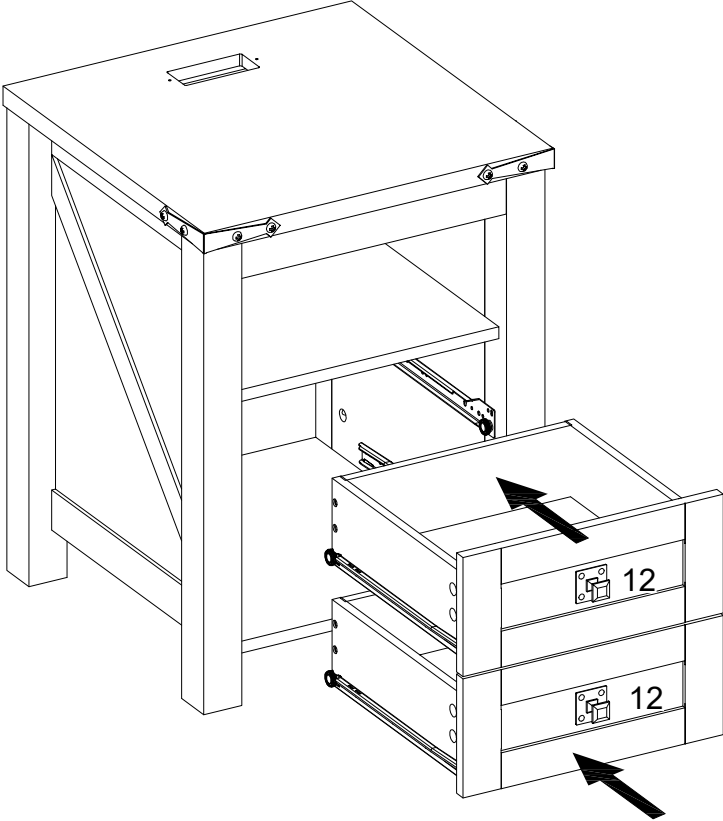


Step 12

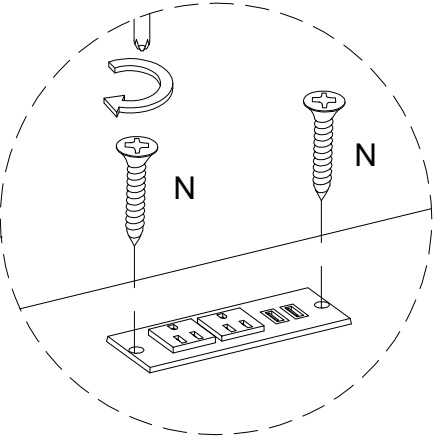
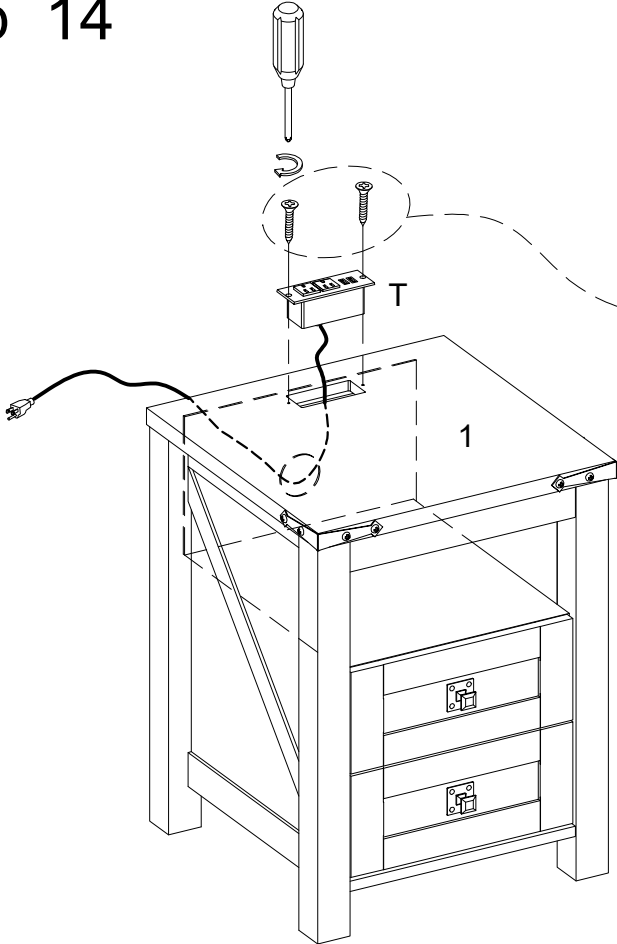
x2



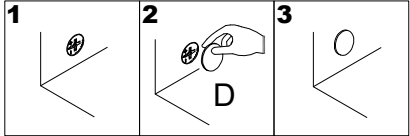
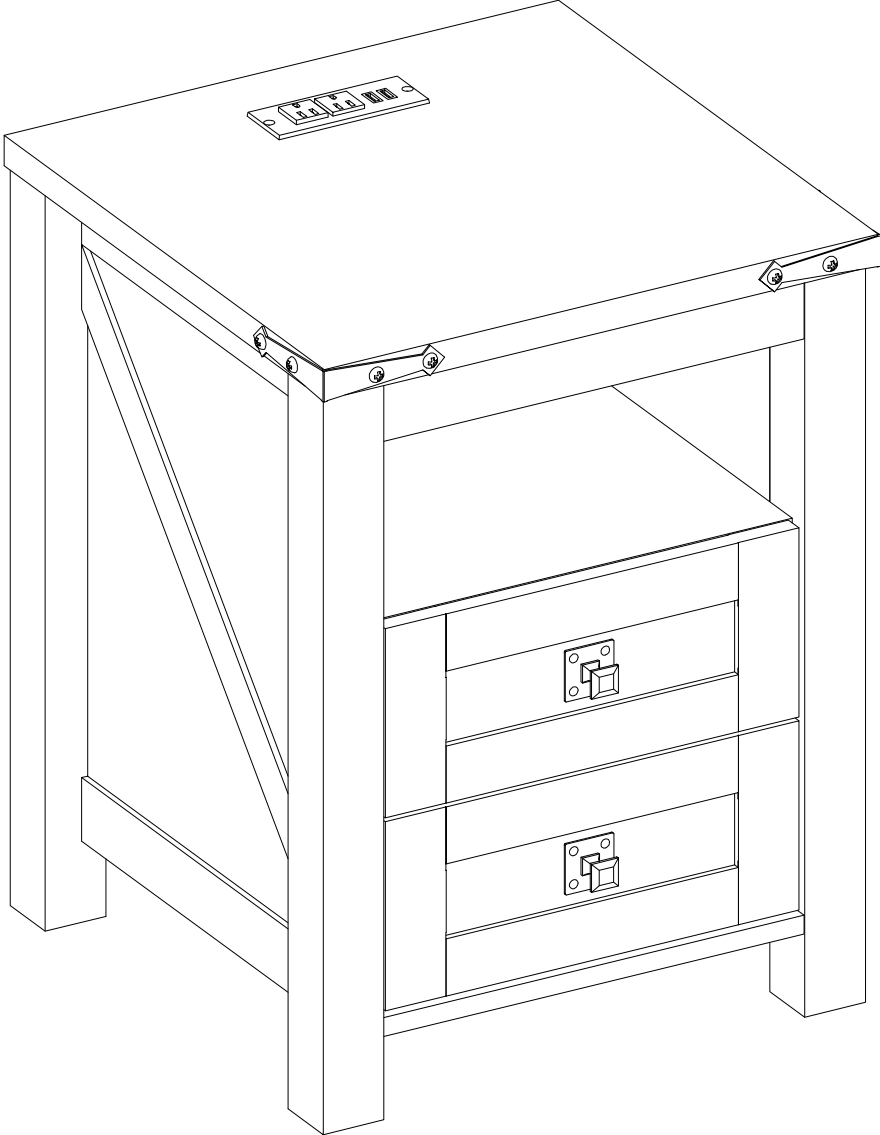
Step 13



Step 14



Step 15



Final Assembly