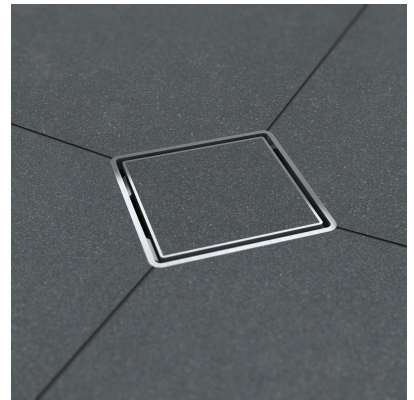
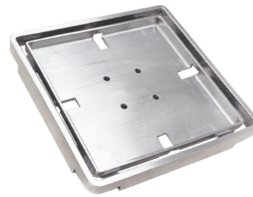




Assembly Instruction | Instrucciones de montaje | Instructions d'assemblage

wedi Tileable Drain Cover

Before using wedi's tileable cover, dry fit all assembly components and the tile intended to cover the stainless steel tray part of the wedi assembly. Make sure, that once the assembly incl. the tile is inserted into the wedi Fundo shower base drain opening, the tiled drain cover rests slightly below or even with the tile bonded (or to be bonded) to the wedi base in the drain area.



Step 1: Insert (no glue is used) the square stainless steel frame into the Fundo shower based drain opening so the frame's corners are now resting on the base's cement coating.

Step 2: Insert the stainless steel tray to be tiled into the stainless steel frame. Do not use any glue to attach tray to frame. The tiling of the tray may be done prior to this drain cover assembly. After cleaning the tray from grease, oil or other contaminants, you may adhere tile using wedi joint sealant or 100% Silicone (spot bonding without sealing over water relieve holes in tray) or modified, cement based tile adhesive (full surface skim coat of a compressed thickness of 1/8" max.).

Step 3: The tiled drain cover is now in place and the wedi Fundo shower base is tiled. Leave a 1/8" grout joint between the base's tile and the cover frame exterior. This grout joint can be filled with cement based grout used for grouting the entire base's tile surface. Any caulk material alternatively used between frame and base's tile must be only topical and must not fill the entire depth of the gap between frame and base's tile. This is to ensure water below the tile surface level can always drain away below the drain cover frame.

Optional: A black ABS plastic drain cover frame extension piece (riser) can be cut to height and be used under the drain cover frame in case thick natural stone is used on the shower base and the tray's height needs to be increased accordingly. This part is optional only and not necessary for your installation in many cases.

For further installation questions, please contact wedi Technical Services.