

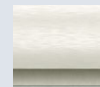


Shower Available in White Only

FEATURES

- AcrylX™ brighter, stronger finish
- Easy entry, low, 4" threshold
- Large integral comfort height seat (19" x 19")
- Sturdy shower base with textured floor
- Accessory shelf and foot ledge
- Easy 4-piece installation from front or rear
- Fully reinforced walls for extra strength that allow bars to be located to fit your needs
- High gloss, smooth finish with arched back wall
- Attractive and easy to clean
- 3 grab bars, brass plated drain, and drain cover included
- Limited Lifetime warranty
- Meets or exceeds UPC, IPC, ANSI Z124.1, NAHB, HUD, FHA
- Made in the USA

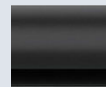
SHOWER KIT FINISHES



Satin Chrome



Brushed Nickel



Matte Black

COMPONENTS INCLUDED (Field Installed)

- Shower Curtain Rod



- Three 24" color matching stainless steel grab bars

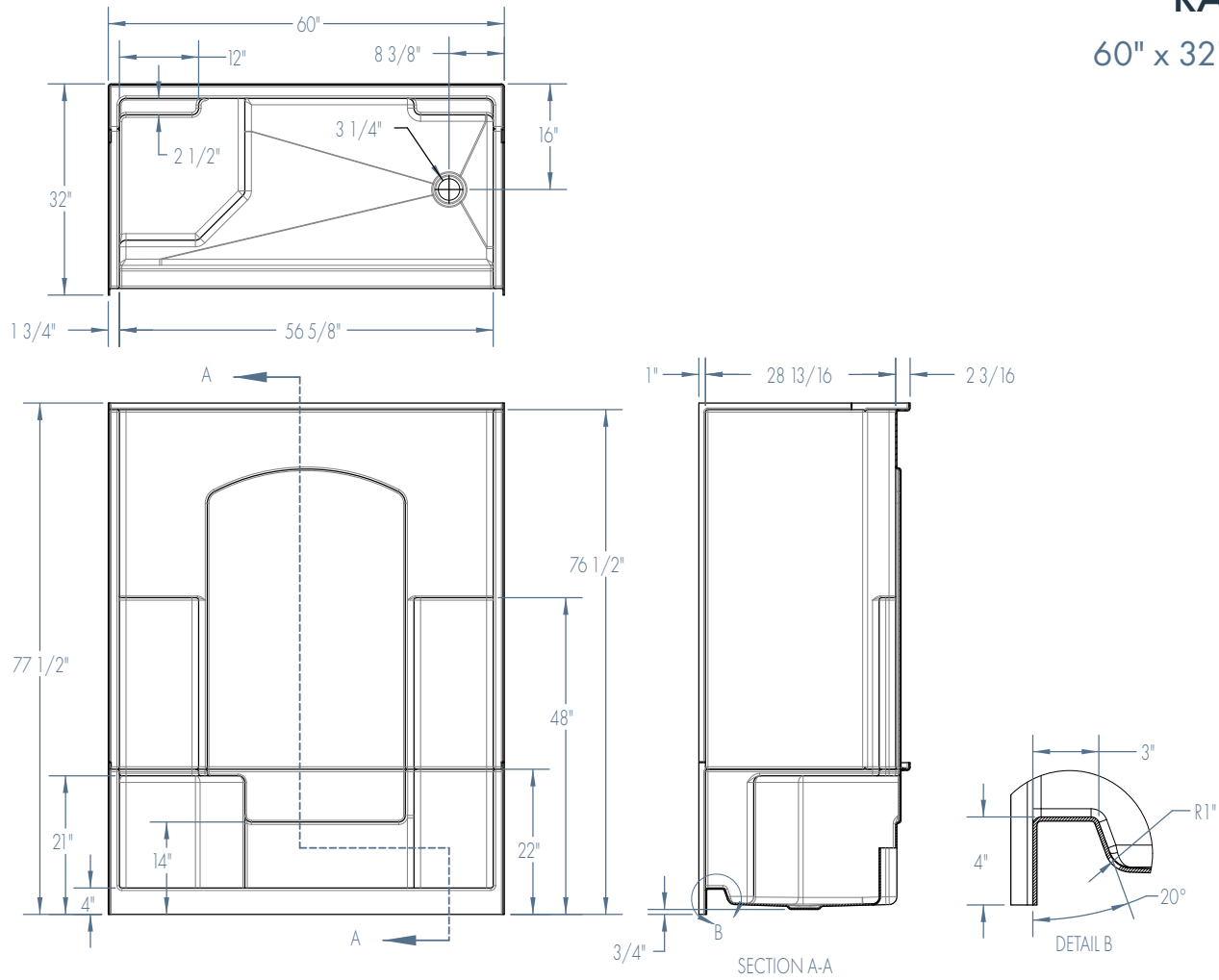


- Chrome Plated Brass Drain and Color Matching Drain Cover



RAMER

60" x 32" x 77"



FEATURES Dimensional Tolerance $\pm 3/8"$. Dimensions needed for site preparation should be measured from the unit. Manufacturer assumes no responsibility for preparatory work.

Kit Type and Contents	Pkg. Wt. lbs	Finish	Seat	Drain	Model #
Ramer Shower Curtain Kit					
- Three 24" bars - 56 5/8" Curtain rod - Two matching curtain rod cups - Chrome plated brass drain	220	Chrome	RH	LH	L3260SH1S4PRWC2
			LH	RH	L3260SH1S4PLWC2
		Brushed Nickel	RH	LH	L3260SH1S4PRWB2
			LH	RH	L3260SH1S4PLWB2
		Matte Black	RH	LH	L3260SH1S4PRWM2
			LH	RH	L3260SH1S4PLWM2