
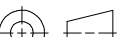
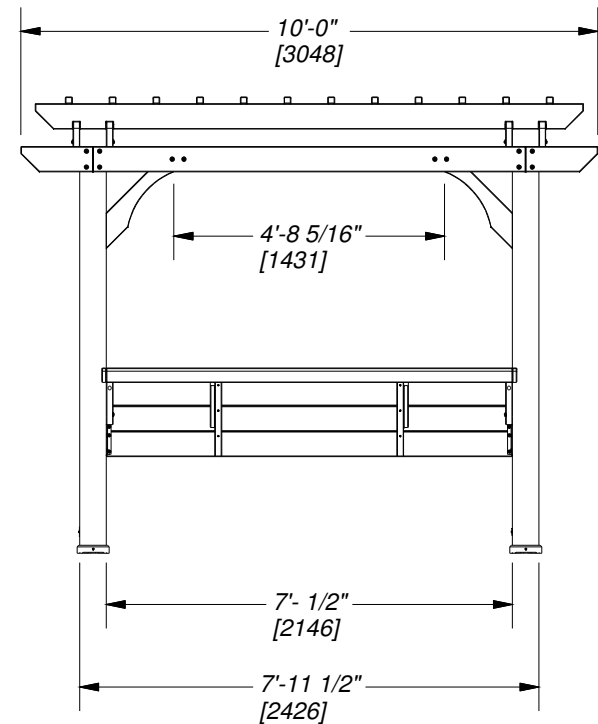
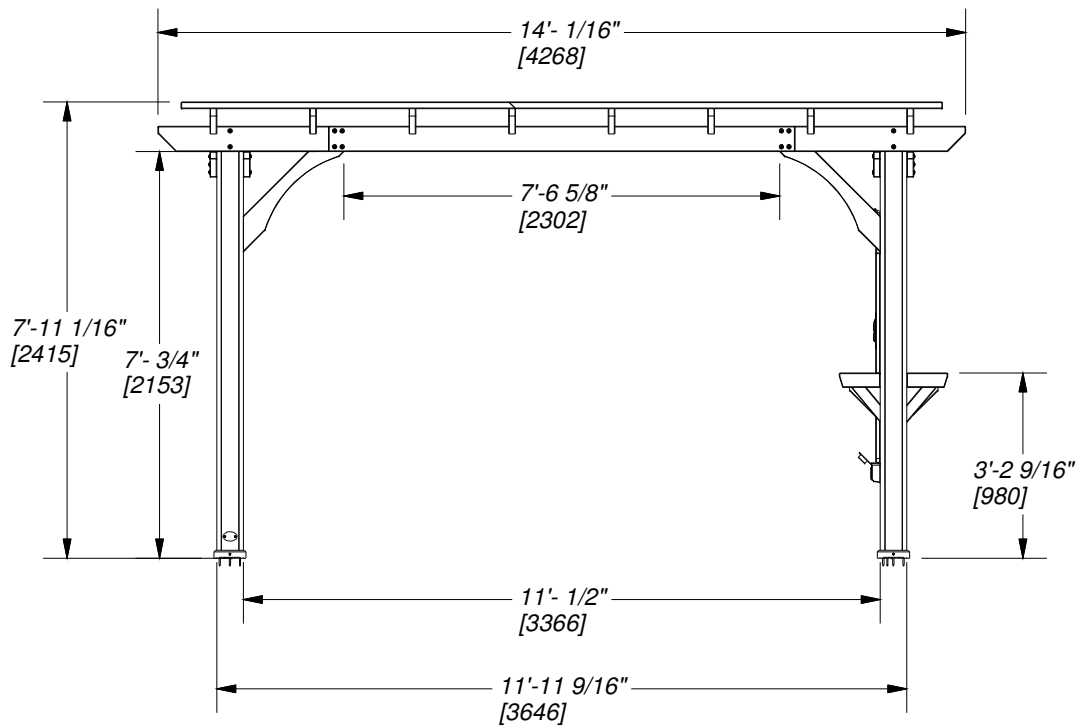


Part Number	2006515 PERGOLA FOOTPRINT
Sheet	1 OF 2
Size	120"x95 1/8"x168" (3048x2415x4268)



<i>This drawing and its contents are the property of Backyard Discovery issued in strict confidence and shall not without the prior written permission of the above stated company, be reproduced, copied, or used for any purpose whatsoever except the manufacture of articles for Backyard Discovery. This drawing is loaned and subject to return upon demand.</i>	TOLERANCES UNLESS OTHERWISE SPECIFIED (UNITS: mm) GENERAL = +1 -0 X.X = ±0.5mm ANGULAR = ±0.5°		Backyard Discovery 3305 Airport Drive Pittsburg, KS 66762 www.swingsetsonline.com			
	THIRD ANGLE PROJECTION 		FINISH MED. BRN-2UV			
	SCALE NONE		DESCRIPTION 14x10 PERGOLA WITH BAR			
	DATE 9/12/2017 DRAWN BY MAB		PART NUMBER 2006515 PERGOLA FOOTPRINT		LABEL	REV

Part Number	2006515 PERGOLA FOOTPRINT
Sheet	2 OF 2
Size	120"x95 1/8"x168" (3048x2415x4268)



This drawing and its contents are the property of Backyard Discovery issued in strict confidence and shall not without the prior written permission of the above stated company, be reproduced, copied, or used for any purpose whatsoever except the manufacture of articles for Backyard Discovery. This drawing is loaned and subject to return upon demand.

TOLERANCES UNLESS OTHERWISE SPECIFIED (UNITS: mm) GENERAL = +1 -0 X.X = ±0.5mm ANGULAR = ±0.5°
THIRD ANGLE PROJECTION
SCALE NONE
DATE 9/12/2017
DRAWN BY MAB

Backyard Discovery
3305 Airport Drive
Pittsburg, KS 66762
www.swingsetsonline.com



FINISH MED. BRN-2UV

DESCRIPTION

14x10 PERGOLA WITH BAR

PART NUMBER 2006515 PERGOLA FOOTPRINT

LABEL REV