

Danger: Risk of injury



Both the grill and its components have some sharp edges.

- Be careful when touching the grill and its components as there is risk of accidents and/or injury during assembly and use. Wear protective gloves if necessary.
- Do not set up the grill near entryways or where a lot of people move around.
- Always exercise extreme caution while grilling. If distracted, you can lose control of the appliance.
- Always be attentive and aware of what you are doing. Do not use the grill if you are not focused, tired, or under the influence of drugs, alcohol, or medication. Just one moment of carelessness during use of the product can lead to serious injuries.

Caution: Risk of damage!



During use, the screws may loosen slowly and impair the grill's stability.

- Check that the screws are well-tightened prior to each use. If necessary, tighten all the screws again to ensure the grill is standing securely.

Caution: Risk of damage!



Do not use any strong or grinding solvents or abrasive ZJA pads, as these can damage the surface and leave behind scrape marks.



CALIFORNIA PROPOSITION 65 WARNING

1. Fuels used in wood and charcoal burning appliances and the combustion byproducts of such fuels, can expose you to chemicals including carbon black, wood dust which are known to the State of California to cause cancer, carbon monoxide, which is known to the State of California to cause birth defects or other reproductive harm.
2. This product can expose you to chemicals including nickel, which is known to the State of California to cause cancer.

For more information, go to: www.P65Warnings.ca.gov

Intended Use

Use this grill to heat, cook and grill food.

This grill is intended exclusively for outdoor use and not for use indoors.

Only use the product as described in this owner's manual.

All other uses are considered improper and can lead to material damage or even personal injuries.

The manufacturer accepts no liability for damage caused by improper use.

Assembly

Preparation

Danger: Risk of explosion!



Failure to follow these instructions can lead to problems and risks while using the grill.

- Follow all the assembly instructions listed here.
1. First read the assembly instructions completely.
 2. Allow yourself enough time for assembly and find an even working space of two to three square meters.
 3. Small parts are preassembled.

Required Tools (Not included)

1 x Phillips screwdriver



1 x Wrench



Unpack Grill

Unpack the grill and dispose of all packaging materials. Keep the packaging materials out of the reach of children and dispose of them according to regulations after assembly of the grill. Take the following steps to assemble the grill.

Caution

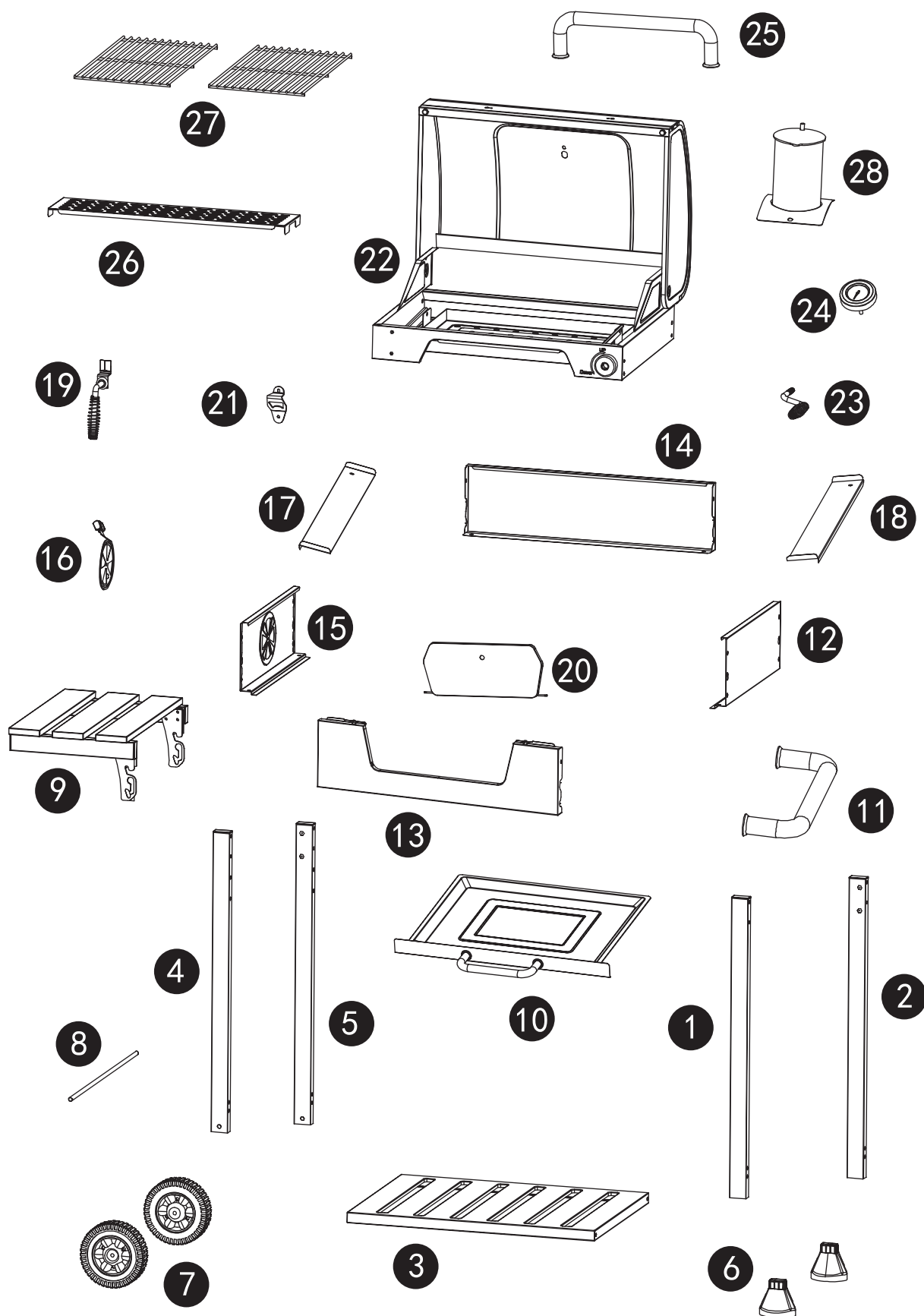
Caution: Risk of damage!















During use, the screws can loosen slowly and impair the grill's stability.

- Check that the screws are well-tightened prior to each use. If necessary, tighten all the screws again to ensure the grill is standing securely.

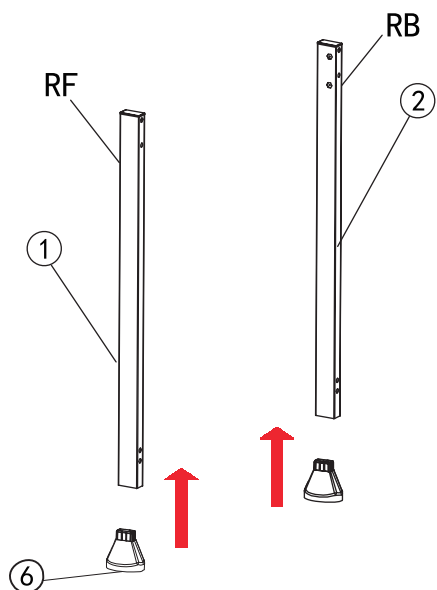
Before use, place the grill on an even, sturdy surface outdoors.



Ref	Description	Illustration	QTY	Ref	Description	Illustration	QTY
1.	Right front leg ECJ15JGRF		1	15.	Left panel ELTTIXCBL		1
2.	Right back leg ECJ15JGRB		1	16.	Damper W-ZH300101+Z-ZH2302030		1
3.	Bottom shelf ECJ15ADB		1	17.	Grease deflector (L) EHLTT1DYPL		1
4.	Left front leg ECJ15JGLF		1	18.	Grease deflector (R) EHLTT1DYPR		1
5.	Left back leg ECJ15JGLB		1	19.	Door handle W-R3003		1
6.	Leg base JS203		2	20.	Charcoal access door EHTM		1
7.	Wheel LZ100		2	21.	Bottle opener KQ001(W-DXL12012)		1
8.	Wheel axle LZ004-CA		1	22.	Main body		1
9.	Side table EHCTY		1	23.	Crank handle YZ002		1
10.	Ash tray ELTTIXJHP		1	24.	Thermometer WJ201(W-20130020)		1
11.	Side handle CS003		1	25.	Lid handle SS201		1
12.	Right panel ELTTIXCBR		1	26.	Warming rack ELT1BWW3B		1
13.	Front panel EHLTTIXQB		1	27.	Cooking grate W-CD1824020		2
14.	Rear panel ELTTIXHB		1	28.	Stack EHSG13YC		1

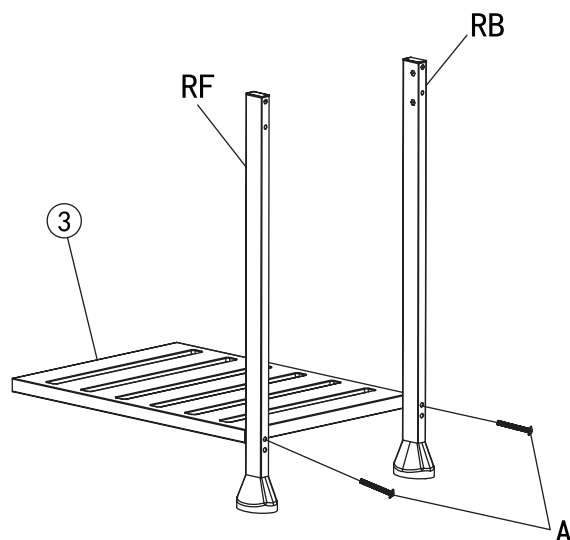
A	M5x55	12 pcs	B	M5x10	8 pcs	C	M4x15	4 pcs	D	Split pin	2 pcs	E	Pad	2 pcs	F	M5x15	1 pc
																	
G	M6x15	6 pcs	H	M6x20	4 pcs	I	M5	1 pc	J	M5	1 pc	K	M4x10	2 pcs	L	M6	2 pcs
																	

Step 1



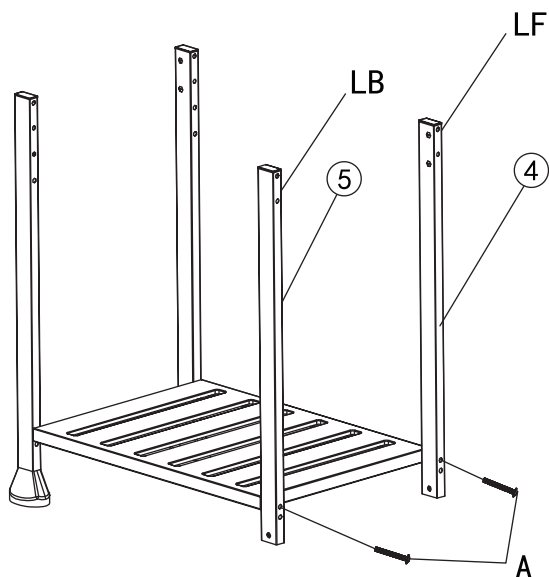
Attach 2 leg bases (6) to the right legs (1), (2).

Step 2



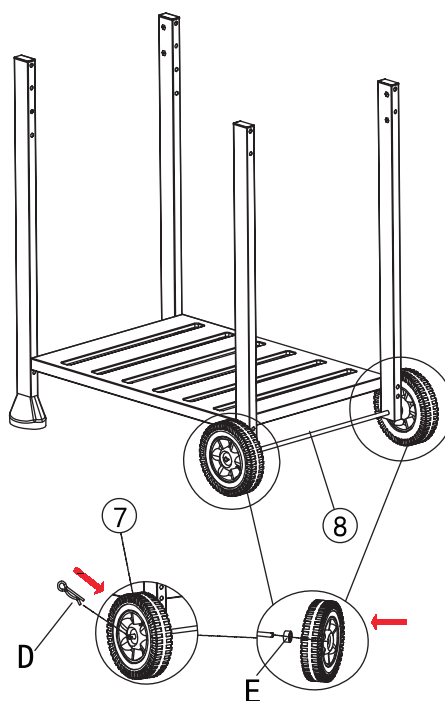
Attach the bottom shelf (3) to the lower right legs with 2 bolts (A).

Step 3



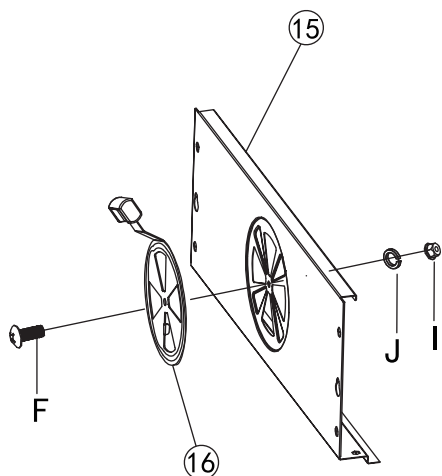
Attach the bottom shelf to the left legs (4), (5) with 2 bolts (A).

Step 4



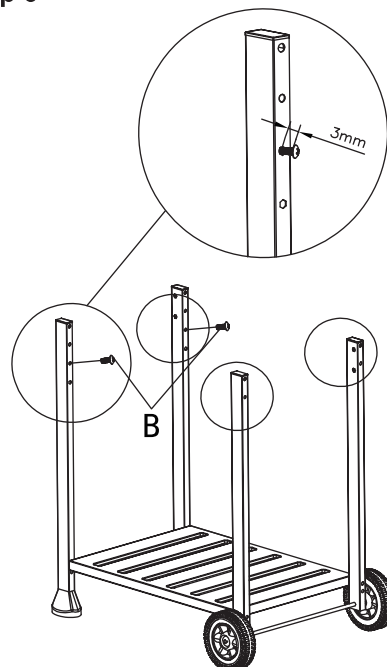
Slide the wheel axle (8) through the lower holes of the left leg assembly. Then attach 2 wheel pads (E) and wheels (7) on the axle from both ends. Secure each wheel with 1 split pin (D).

Step 5



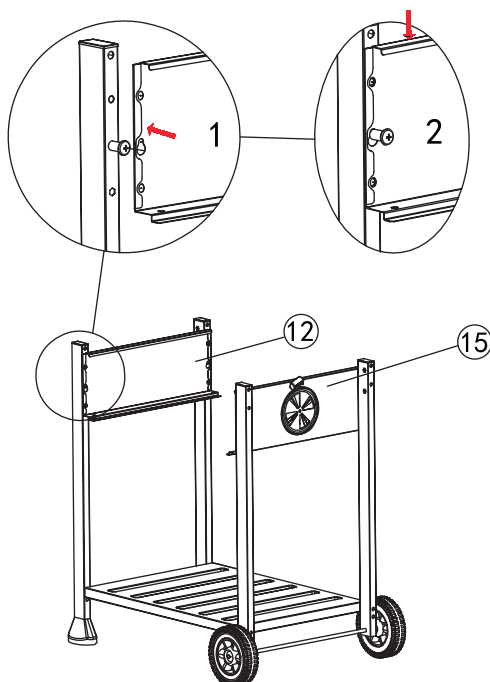
Assemble the damper (16) to the left panel (15) with 1 bolt (F), 1 washer (J) and 1 nut (I) as shown.

Step 6



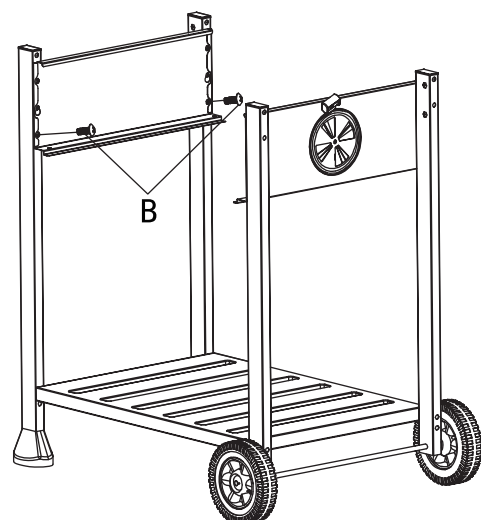
Half screw 4 bolts (B) to the upper leg holes as shown.

Step 7



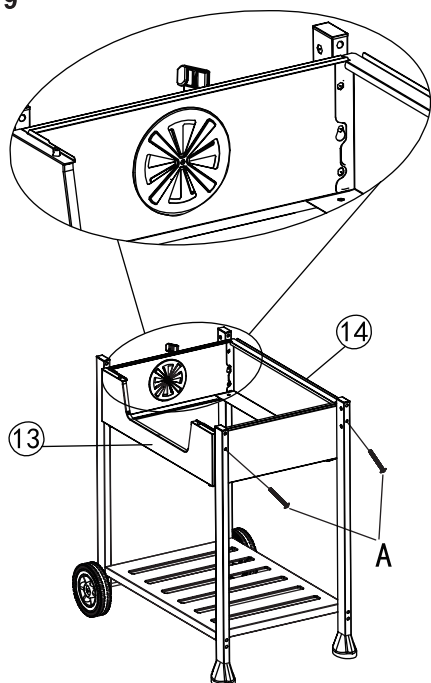
Attach the left panel (15) and the right panel (12) onto the half-screwed bolts of the legs.

Step 8



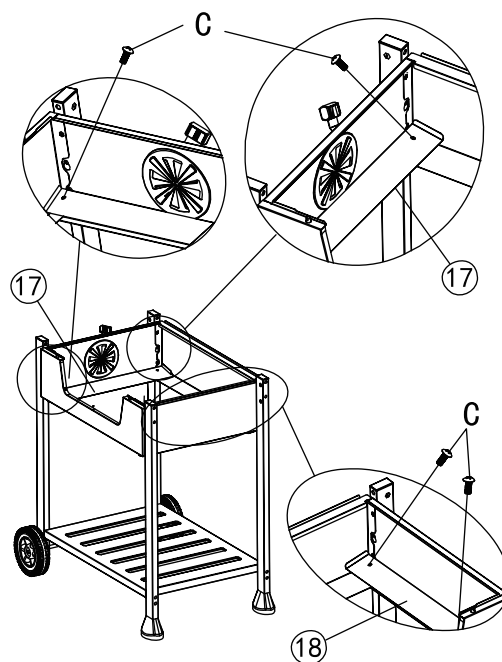
Fasten the left panel and the right panel to the legs with 4 bolts (B).

Step 9



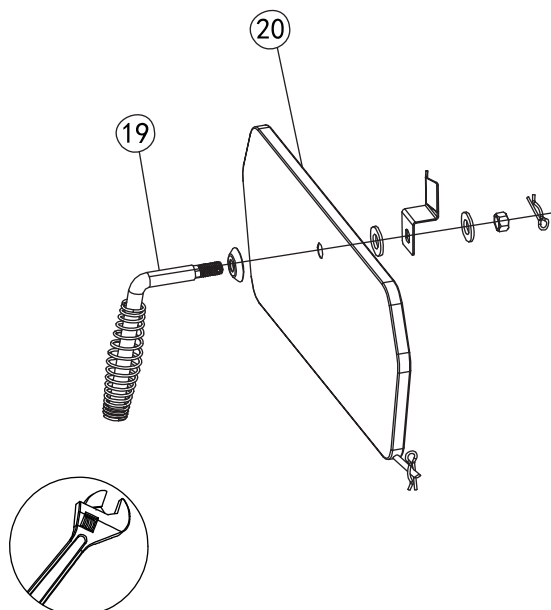
Secure the front panel (13) and the rear panel (14) to the legs with 4 bolts (A).

Step 10



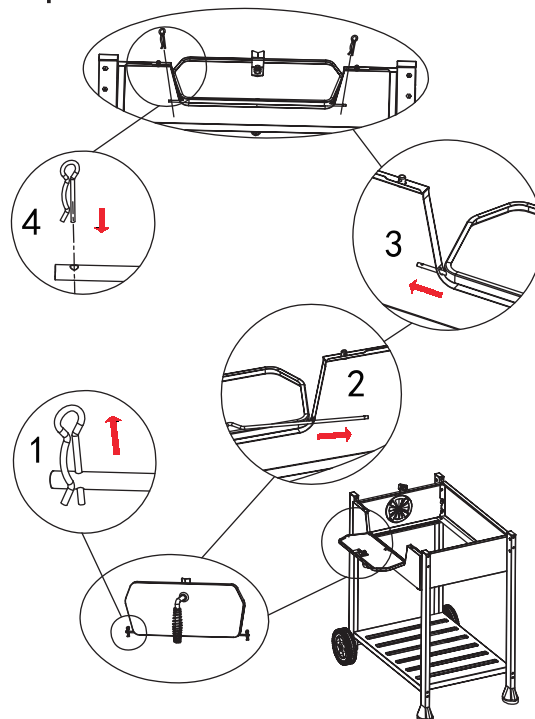
Assemble the grease deflectors (17), (18) to the left and right panels with 4 bolts (C).

Step 11



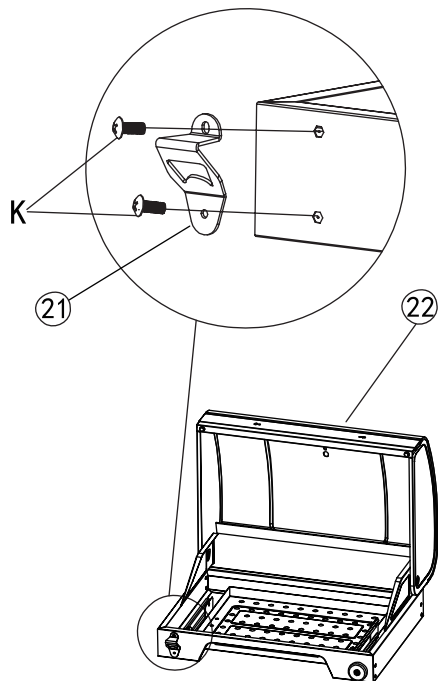
Insert the door handle (19) into the charcoal access door (20) and secure it from the inside with 2 washers, a nut and a split pin. The washers, nut and split pin are preassembled on the handle.

Step 12



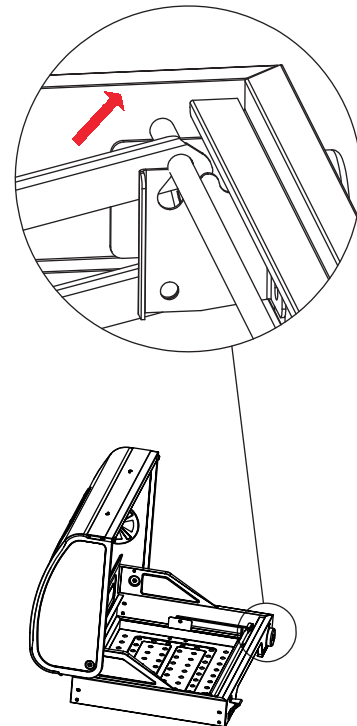
Attach the charcoal access door to the front panel by sliding the pole of the door into the front panel. Secure with 2 split pins. The split pins are preassembled on the charcoal access door.

Step 13



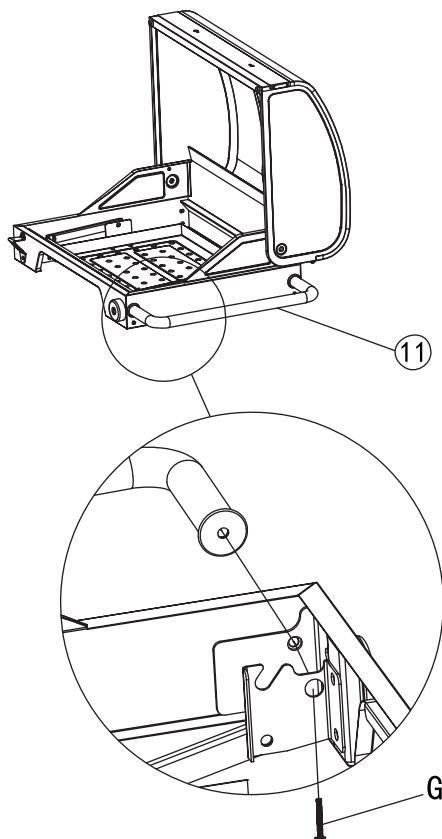
Attach the bottle opener (21) to the main body (22) with 2 bolts (K).

Step 14



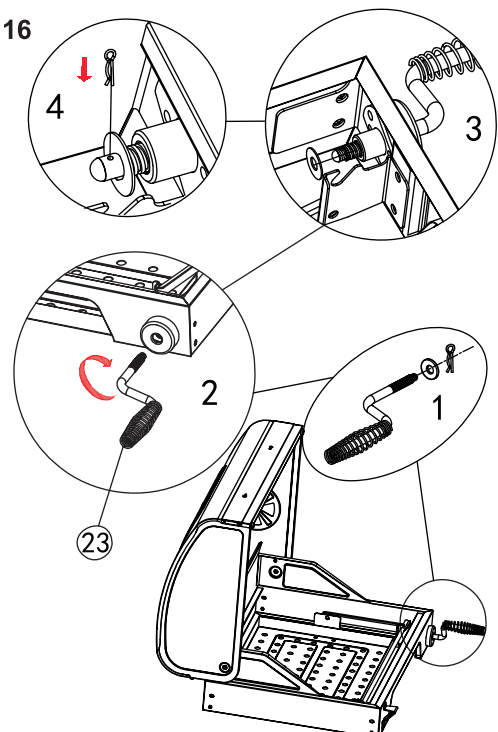
Install the charcoal pan lifting system onto the main body.

Step 15



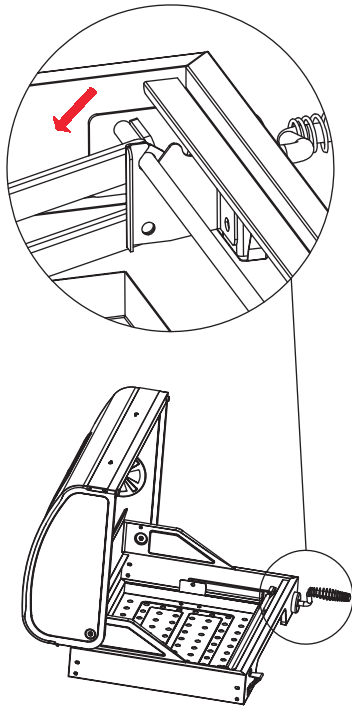
Assemble the side handle (11) to the right side of the main body with 2 bolts (G).

Step 16



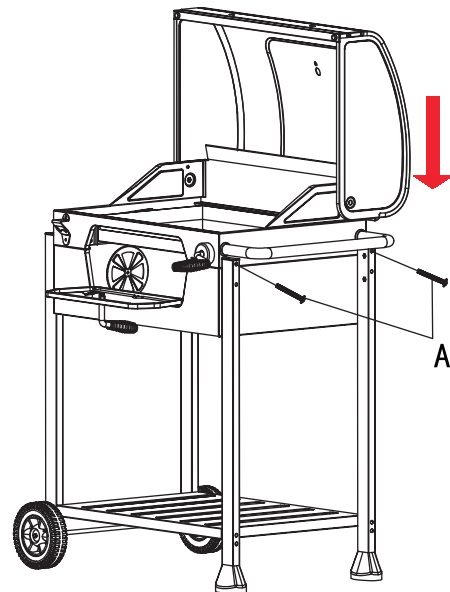
1. Rotate to separate the split pin, the washer and the crank handle (23).
 2. Insert the crank handle into the main body by twisting clockwise.
 3. Attach the washer back from the inside of the main body.
 4. Secure it with the split pin.
- The split pin and washer are preassembled on the handle.

Step 17



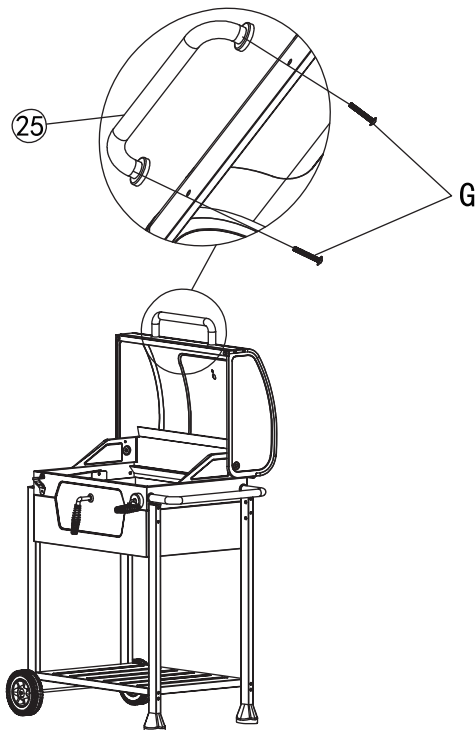
The charcoal pan can be adjusted to the height as you need.

Step 18



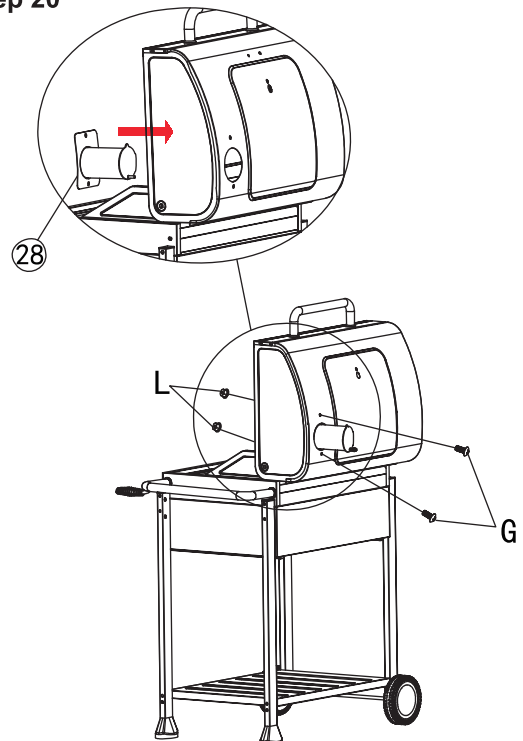
Assemble the main body (22) onto the cart with 4 bolts (A).

Step 19



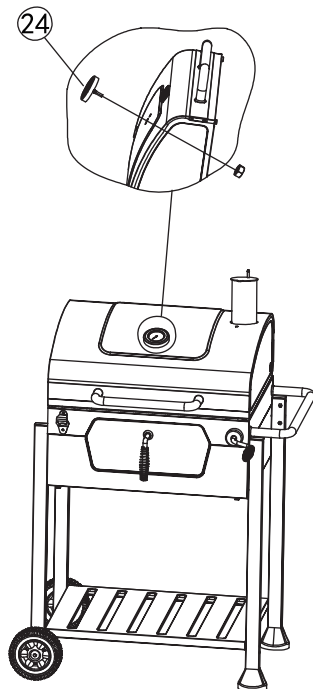
Assemble the lid handle (25) to the lid with 2 bolts (G).

Step 20



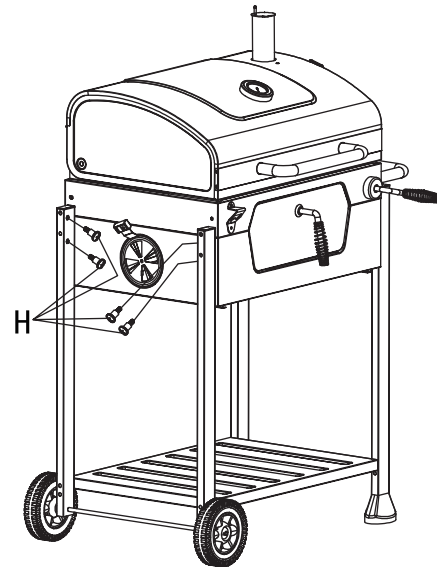
Assemble the stack (28) to the lid with 2 bolts (G) and 2 nuts (L).

Step 21



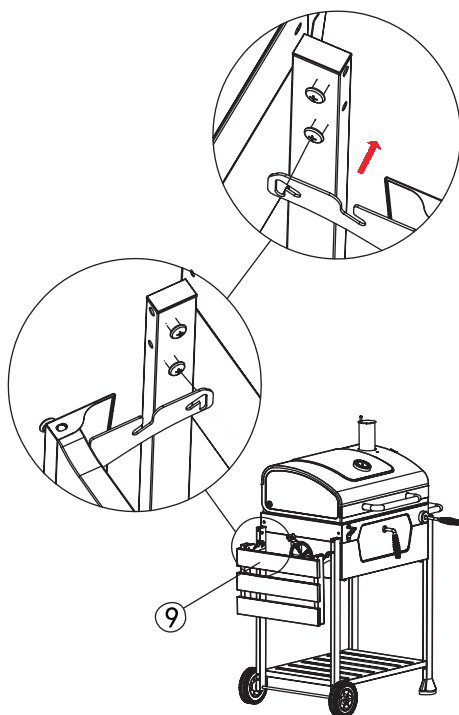
Insert the thermometer (24) into the hole on the lid and secure it in place with a nut.

Step 22



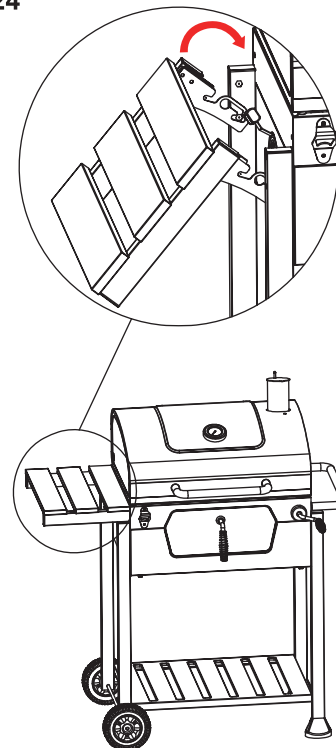
Screw 4 bolts (H) to the legs as shown.

Step 23



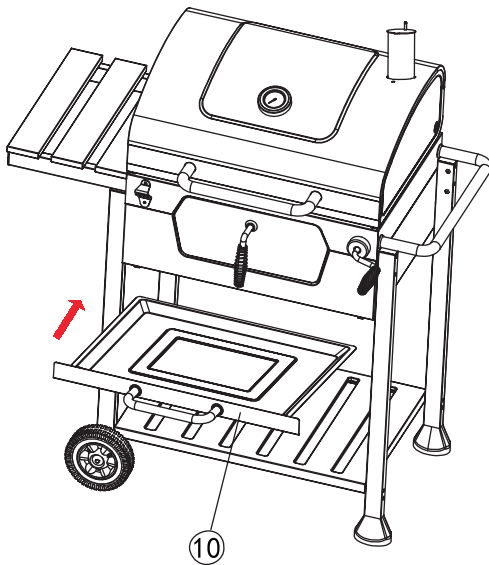
Attach the side table (9) to the bolts (H).

Step 24



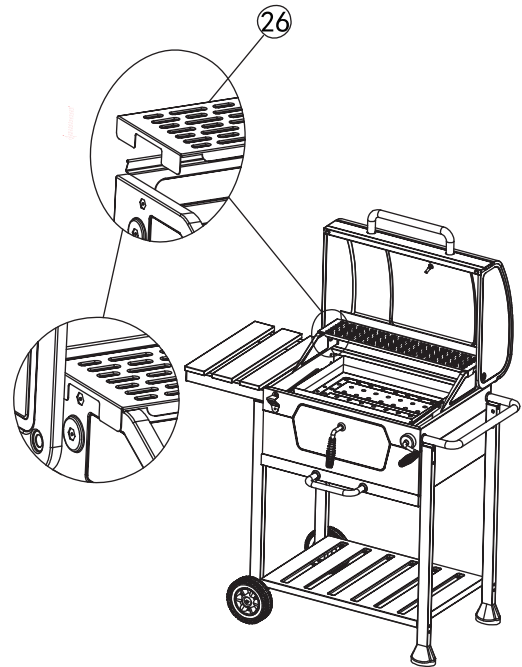
Fodable side table.

Step 25



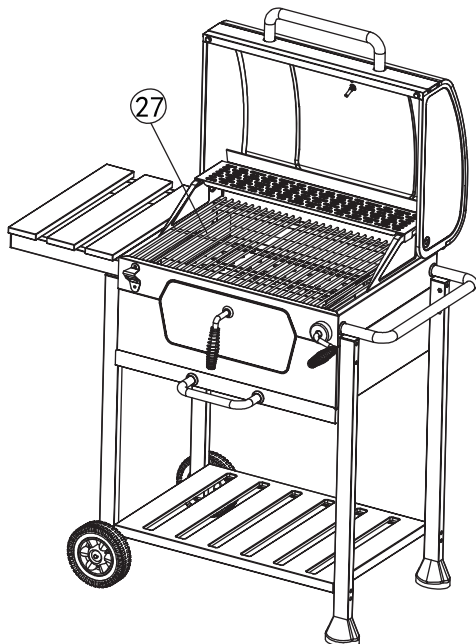
Slide in the ash tray (10) underneath the main body.

Step 26



Assemble the warming rack (26) to the main body as shown.

Step 27



Place the cooking grates (27) into the main body.