



AquaSource® is a registered trademark
of LF, LLC. All Rights Reserved.

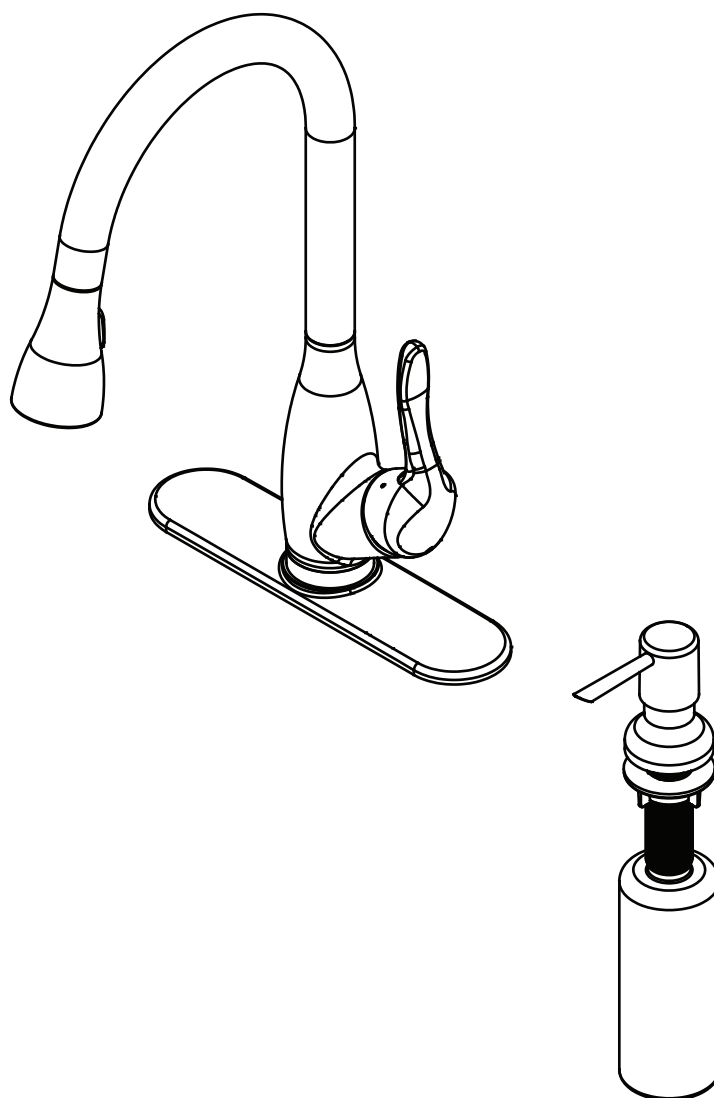
ITEM #0016086

PULL-DOWN KITCHEN FAUCET

MODEL #406208234

Français p. 09

Español p. 17



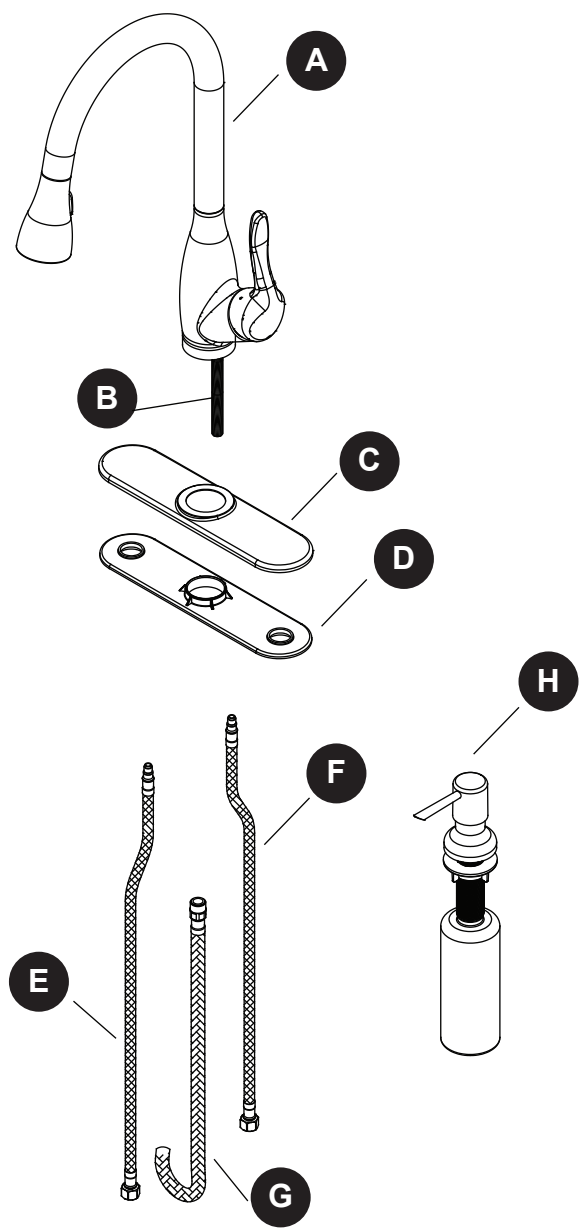
ATTACH YOUR RECEIPT HERE

Serial Number _____ **Purchase Date** _____



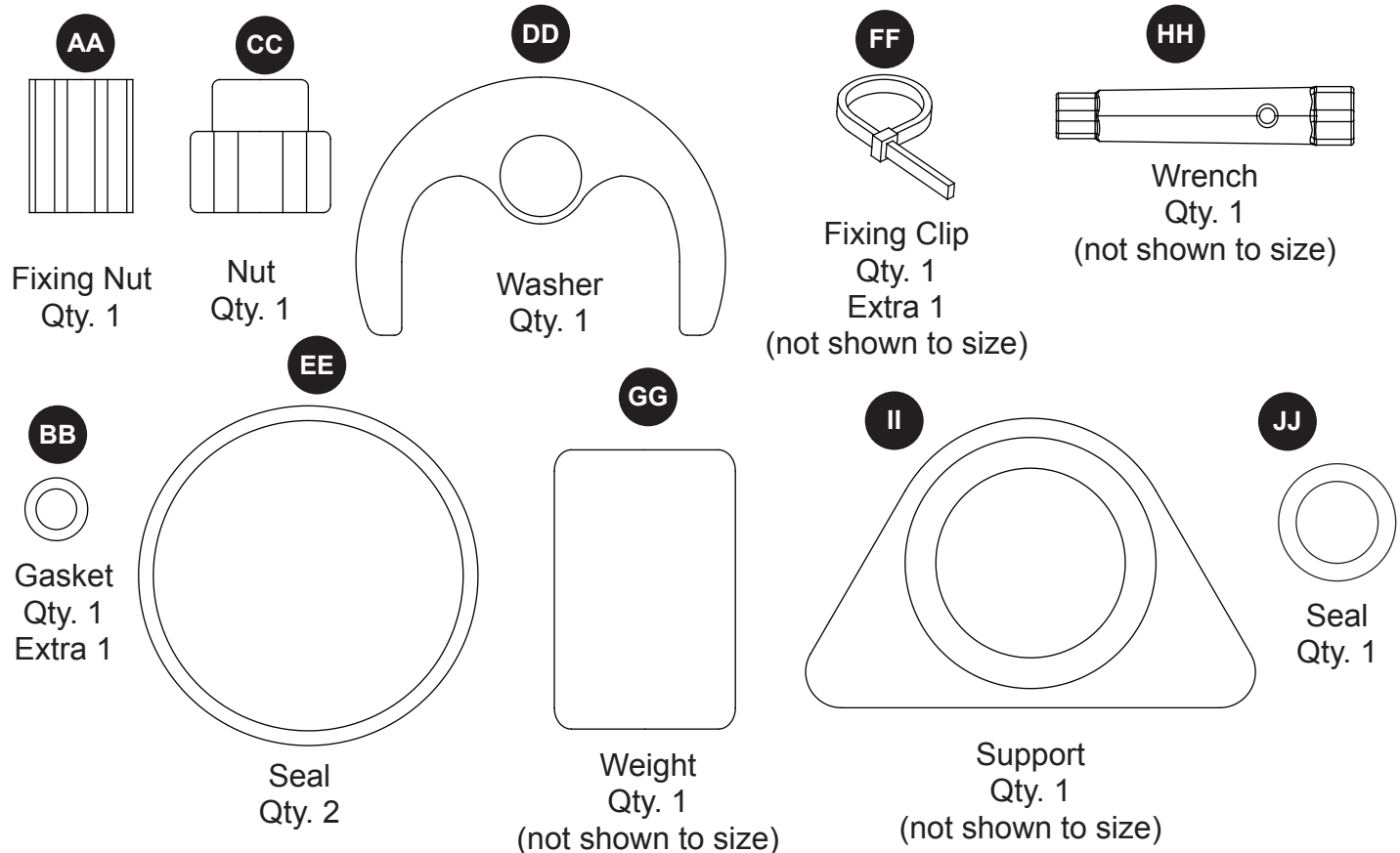
Questions, problems, missing parts? Before returning to your retailer, call our customer service department at 1-866-417-7564, 8 a.m. - 8 p.m., EST, Monday - Friday, 9 a.m. - 6 p.m., EST, Saturday.

PACKAGE CONTENTS



PART	DESCRIPTION	QUANTITY
A	Faucet	1
B	Outlet pipe	1
C	Deck plate	1
D	Putty plate	1
E	Supply hose - cold	1
F	Supply hose - hot	1
G	Spary hose	1
H	Soap dispenser	1

HARDWARE CONTENTS (shown to size)



SAFETY INFORMATION

Please read and understand this entire manual before attempting to assemble, operate or install the product. If you have any questions regarding the product, please call customer service at 1-866-417-7564, 8 a.m. - 8 p.m., EST, Monday - Friday, 9 a.m. - 6 p.m., EST, Saturday.

WARNING

- Failure to follow correct installation procedures can cause the faucet to become loose, which can result in serious injury.

CAUTION

- Follow these installation instructions carefully. Proper installation is the installer's responsibility.
- Check local building codes before beginning installation to ensure compliance.
- This product should be installed by a locally licensed plumber.

PREPARATION

Before beginning assembly of product, make sure all parts are present. Compare parts with package contents list and hardware contents above. If any part is missing or damaged, do not attempt to assemble the product. Contact customer service for replacement parts.

Estimated Assembly Time: 15 minutes

Tools Required for Assembly (not included): Plumber's putty, Adjustable wrench

Helpful Tools (not included): Groove joint pliers

ASSEMBLY INSTRUCTIONS

1. Shut off main water supply before installation. Remove old faucet. Clean sink surface. If your sink/counter does not already contain holes for faucet installation, follow sink manufacturer's instructions for drilling holes. The faucet mounting hole should be between 1-7/16 in. to 1-1/2 in. in diameter.

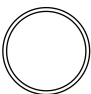
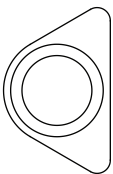
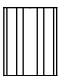


2. Attach seal (EE) to the bottom of the faucet (A). If you will use the deck plate (C), install putty plate (D) and deck plate (C) on the sink. Install faucet (A) through top of sink. Apply plumber's putty or other sealant to the bottom edges of the putty plate (D).

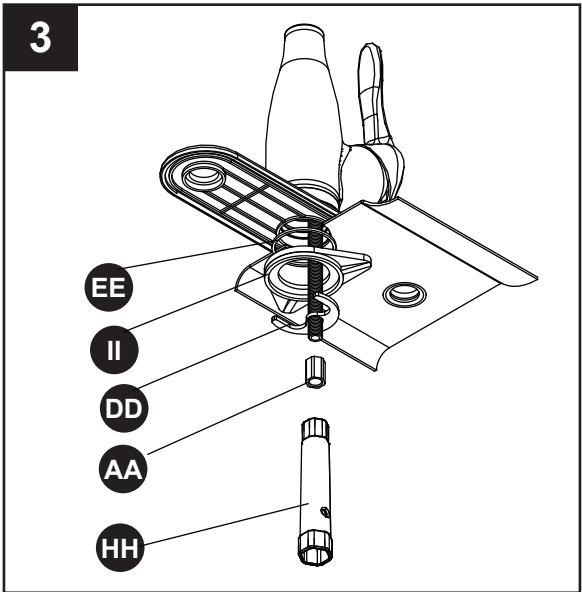
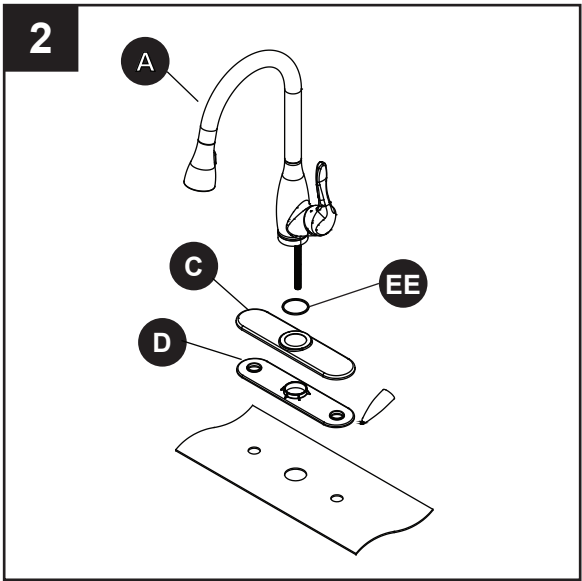
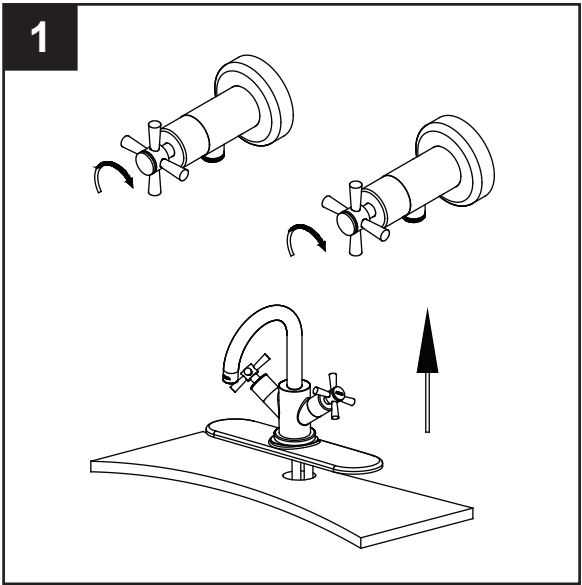
Hardware Used

EE Seal  x 1

3. From underneath sink, attach seal (EE), support (II), washer (DD) and fixing nut (AA). Tighten with wrench (HH).

Hardware Used

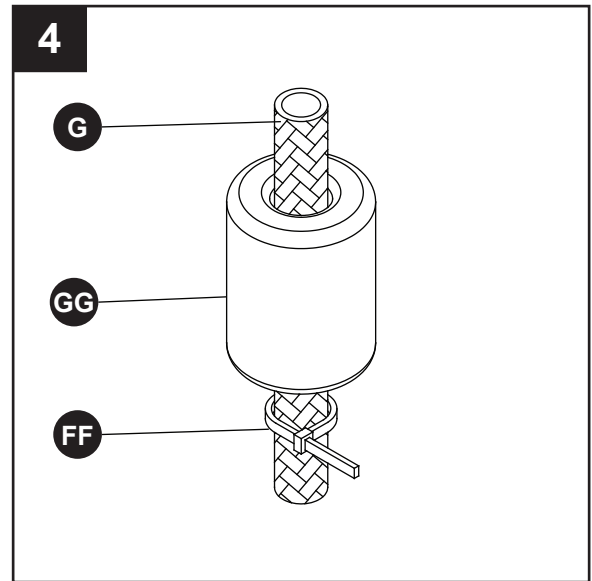
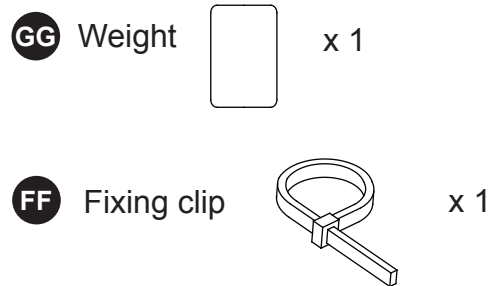
EE Seal  x 1	II Support  x 1
AA Fixing nut  x 1	
DD Washer  x 1	HH Wrench  x 1



ASSEMBLY INSTRUCTIONS

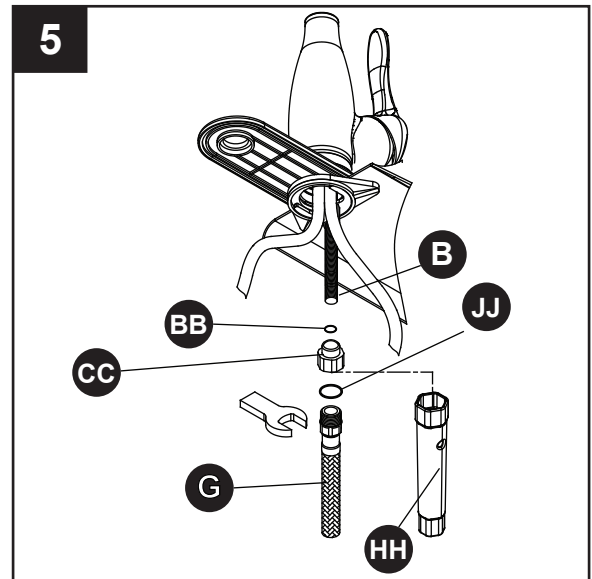
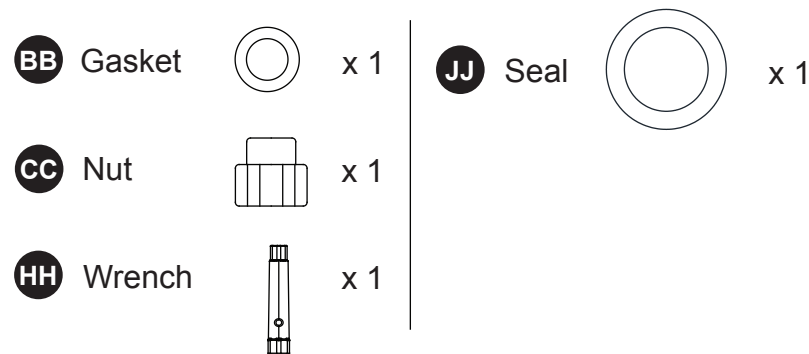
4. Attach weight (GG) to the spray hose (G). Attach the weight (GG) to the bottom of the loop on spray hose (G) with the fixing clip (FF). Trim the remaining part of fixing clip (FF).

Hardware Used

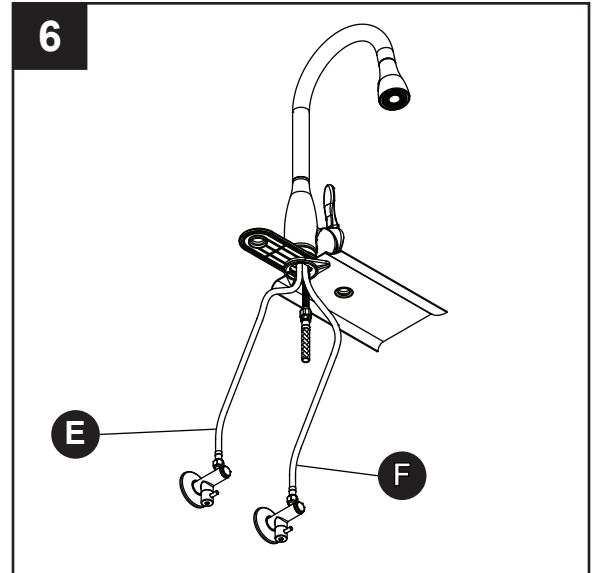


5. Place the gasket (BB) inside the nut (CC). Thread in the nut (CC) to the outlet pipe (B) and tighten with the wrench (HH). Attach spray hose (G) to the nut (CC).

Hardware Used

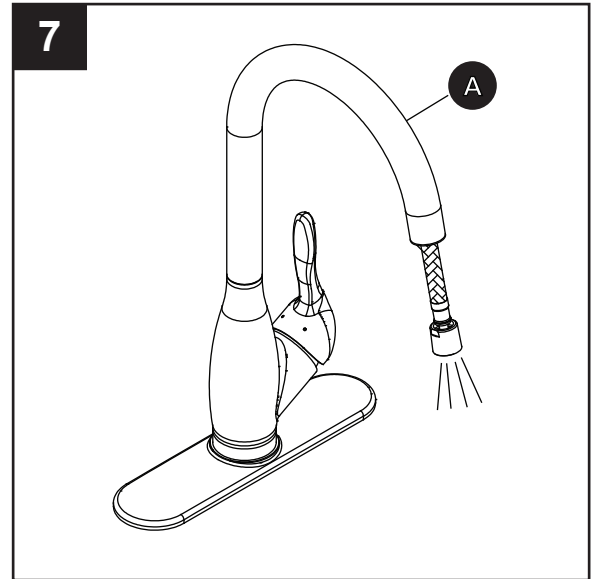


6. Attach supply hose - cold (with blue stripes) (F) to cold water valve and supply hose - hot (with red stripes) (E) to hot water valve. Open the water valves and check for leaks at supply line connection.

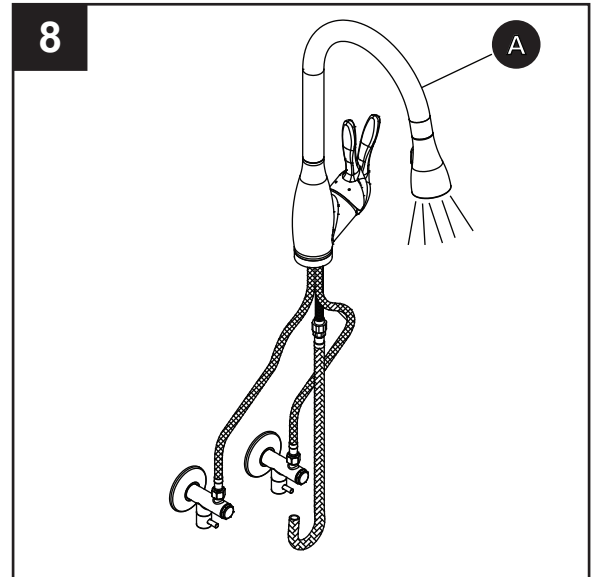


ASSEMBLY INSTRUCTIONS

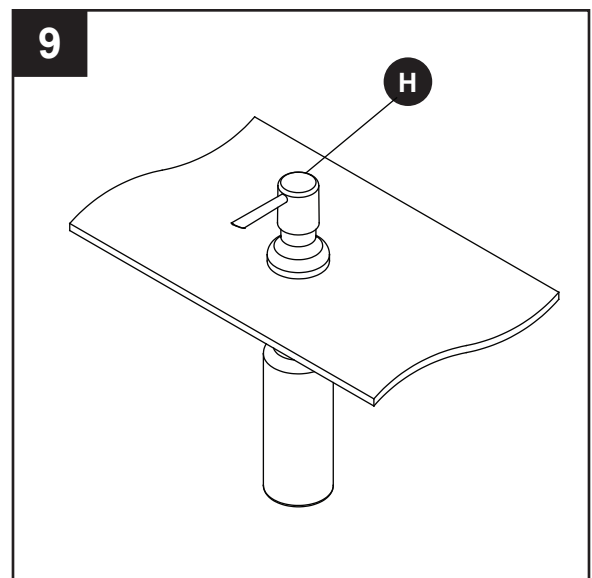
7. Remove spray head from faucet (A) and turn on water for 30 seconds to remove debris from the lines.



8. Re-assemble spray head. Push the button of the spray head to alternate the spray between stream and spray.



9. Insert soap dispenser assembly (H) through desired mounting hole. From underneath sink, tighten nut until the escutcheon is firmly held in place and attach bottle.



CARE AND MAINTENANCE

- To maintain and protect the fine luster of your faucet, clean with a soft, damp cloth only.
- Do not use detergent or cleanser that may harm the finish.

TROUBLESHOOTING

If you have any questions regarding the product, please call customer service at 1-866-417-7564, 8 a.m. - 8 p.m., EST, Monday - Friday, 9 a.m. - 6 p.m., EST, Saturday.

PROBLEM	POSSIBLE CAUSE	CORRECTIVE ACTION
Leak from handle.	1. Damaged cartridge.	1. Remove handle. Replace cartridge.
Aerator leaks or has an inconsistent water flow pattern.	1. Aerator is dirty or misfitted.	1. Unscrew the aerator to check rubber packing or replace the aerator.

LIMITED LIFETIME WARRANTY

The manufacturer warrants this faucet to be free from defects in workmanship and material present at time of shipment from the factory for a limited lifetime from the date of purchase. This warranty applies only to the original purchaser. The manufacturer agrees to correct such defects at no charge or, at our option, replace the faucet with a comparable or superior model.

To obtain warranty service, call our customer service department at 1-866-417-7564 for return authorization and shipping instructions. You may be required to present a copy of your sales receipt as proof of purchase. All cost of removal and reinstallation are the expressed responsibility of the purchaser. Any damage to the faucet by accident, misuse or improper installation, or by affixing accessories not produced by the manufacturer, are the purchaser's responsibility.

The manufacturer assumes no responsibility whatsoever for faucet installation during the warranty period. There is no further expressed warranty.

The manufacturer disclaims any and all implied warranties. The manufacturer shall not be liable for incidental, consequential or special damages arising at or in connection with product use or performance except as may otherwise be accorded by law.

This warranty gives you specific legal rights, and you may also have other rights which vary from state to state.

This warranty supersedes all prior warranties.

REPLACEMENT PARTS LIST

For replacement parts, call our customer service department at 1-866-417-7564, 8 a.m. - 8 p.m., EST, Monday - Friday, 9 a.m. - 6 p.m., EST, Saturday.

PART	DESCRIPTION	PART #
1	Spout	416202018
2	Bearing	410808002
3	Faucet body group	406226105
4	Spray guide	410834005
5	Spray hose	406239003
6	Seal	410803029
7	Seal	110803526
8	Weight	410624020
9	Fixing clip	410832001
10	Hand spray	406238002
11	Spray check valve	402126106
12	Aerator	402133031
13	Check valve	402126008
14	Ceramic cartridge	402135001
15	Fixing nut	410618013
16	Cover	416215046
17	Handle	416212017
18	Screw	112222056
19	Hose guide	410824039
20	Ring	416215047
21	Seal	110803723
22	Support	110824553
23	Washer	110717088
24	Deck plate	416215042
25	Putty plate	410834006
26	Fixing nut	110718402
27	Gasket	110803777
28	Nut	110714275
29	Supply hose - cold	402139001
30	Supply hose - hot	402139002

