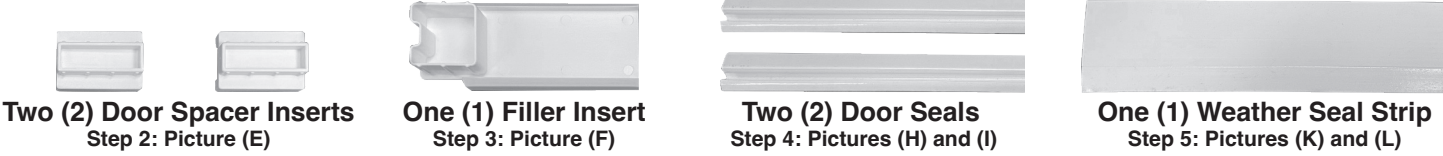


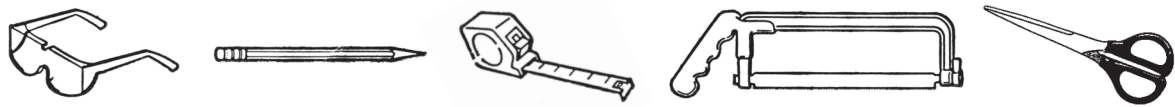
INSTALLATION INSTRUCTIONS

Premium FastFit™ Pet Patio Door

Parts Included for Installation:



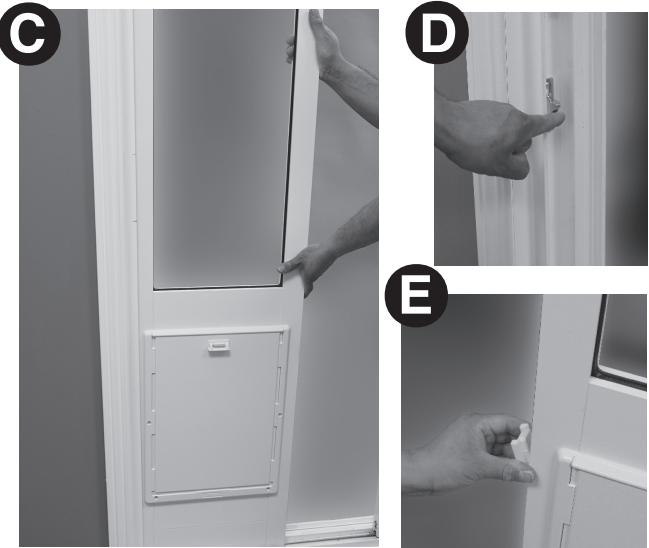
Tools Needed for Installation:



Step 1: With your sliding patio door fully opened, insert the top portion of the Pet Patio Door Panel **(A)** into the top track channel (make sure the lock-out slide is facing the inside of your house) and push up to compress the top spring section. Next, **(B)** gently lower the bottom of the pet patio door panel into the bottom track channel.



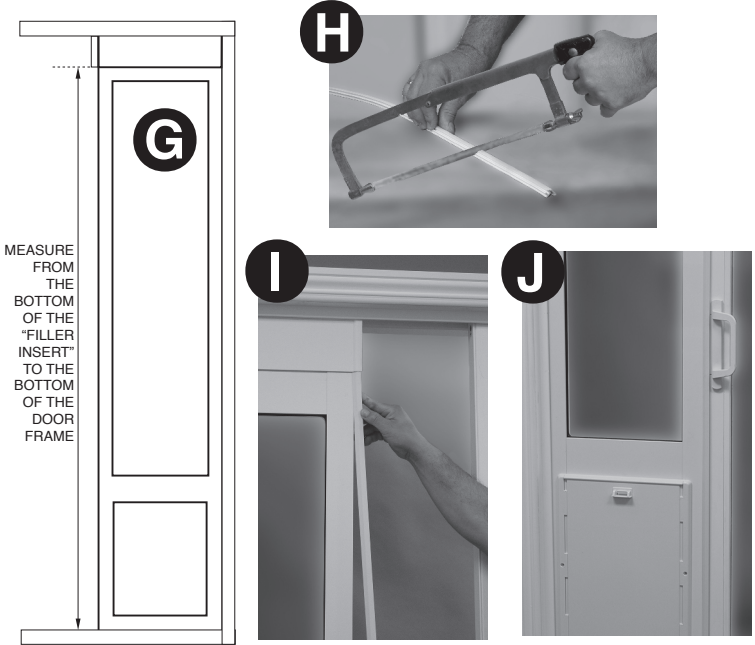
Step 2: Once the Pet Patio Door Panel is completely inserted into the top and bottom tracks and gently **(C)** slide the pet patio door panel to the side until it is secure in the side track channel. Note: if you sliding patio door lock catch **(D)** is interfering with the Pet Patio Door Panel, you can remove the lock catch or place the (2) Door Spacer Inserts **(E)** into the pet panel side channel, one approximately 18" from the top and one approximately 18" from the bottom.



Step 3: Now that the Pet Patio Door Panel is in place, attach the Filler Insert **(F)** into the top spring section opening and press into place. Note: if you need to remove the Pet Patio Door Panel, be sure to remove the Filler Insert first.



Step 4: Your Pet Patio Door includes two (2) Door Seals which mount onto the side of the Pet Patio Door Panel, so with the Pet Patio Door Panel installed, **(G)** measure the length from the bottom of your sliding door frame to the bottom of the Top Section Filler Insert. Transfer this measurement to the Door Seals and mark with a pencil then **(H)** carefully cut each Door Seal at this measurement with a hack saw. Next, **(I)** press firmly into place onto both inside and outside edges of the Pet Patio Door Panel. Close your sliding patio door allowing it to secure into the Door Seals **(J)**.



Step 5: The one (1) Weather Seal Strip (taped to inside of box) attaches to the moving section of your sliding glass door. Measure the vertical distance, or height of the exposed glass between the top and bottom frames of the sliding glass door, mark this measurement with a pencil on the Weather Seal Strip and **(K)** carefully cut with a scissors. Next, starting at the top of the sliding glass door **(L)** attached the Weather Seal by aligning the edge of the strip so it rubs lightly against the glass, then pull the paper backing off tape and gently press in place while working slowly down the Weather Seal. Once correctly placed, press firmly along the entire length to ensure a secure seal.



Locking the Sliding Patio Door (Optional): A wide variety of sliding patio door locks are available from your local do-it-yourself home center to choose from. You can also use a 3/4" wood dowel (not included) cut to fit into the siding door track to secure your sliding glass door with the Premium FastFit Pet Patio Door Panel installed.