

## Phase 3 LED

Wall Mounted • Damp Location Listed **PROGRESS LED**

### Description:

Phase 3 Collection 16 in. Matte Black Small Modern 3CCT Integrated LED Linear Vanity Light

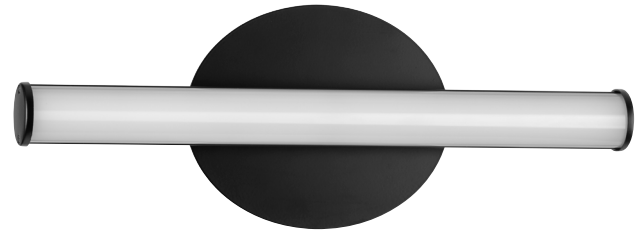
### Specifications:

- Diffused Plastic Cylindrical
- Dimmable to 10% brightness (See Dimming Notes)
- Canopy covers a standard 4" recessed outlet box: 6.09 in W., 4.96 in ht., 1.38 in depth
- Swivel mounting strap for outlet box included
- 10 in of wire supplied
- Americans With Disabilities Act (ADA) compliant

### Performance:

|                        |   |
|------------------------|---|
| Input Power            | 11 W  |
| Input Voltage          | 120 V   |
| Input Frequency        | 60 Hz   |
| Lumens/LPW (Delivered) | 1,083/98 (LM-79)  |
| CRI                    | 90 CRI  |
| Life (hours)           | 50000 (L70/TM-21)   |
| EMI/RFI                | FCC Title 47, Part 15, Class B                                    |
| Warranty               | 5-year Limited Warranty   |
| Labels                 | cCSAus Damp Location Listed<br>Meets California Title 24 JA8-2016 |

# P300410-31M-CS



### Dimensions:

Width: 16 in  
Extends: 3 in  
Height: 5-11/16 in (glass facing up)

**Photometrics:**

---

**P300410-31M-CS**

| <b>ELECTRICAL DATA</b>                              | <b>P300410-31M-CS</b>          |
|---|--------------------------------|
| Input Voltage                                       | 120 V                          |
| Input Frequency                                     | 60 Hz                          |
| THD   | <20%                           |
| EMI/RFI   | FCC Title 47, Part 15, Class B |
| Operating Temperature                               | -30 °C to 30 °C                |
| Dimming   | Yes*                           |
| Over-voltage, over-current, short-circuit protected |                                |

\*See Dimming Notes for more information

# P300410-31M-CS

## Dimming Notes:

---

P300410-31M-CS is designed to be compatible with many ELV/Reverse Phase Triac/Forward Phase controls.

The following is a partial list of known compatible dimmer controls.

## Dimming Controls:

---

Eaton SAL06P

Leviton 6681

Leviton IPI06-1LZ

Leviton 6672

Leviton 6674

Lutron NTEVL-300

Lutron DVELV-300P

Lutron DVCL-253P

Lutron Caseta Wireless

Idevices IDEV009

Lutron AYCL-153P

Lutron SCL-153P

Lutron TGCL-153-PH-WH

Lutron MACL-153M

Dimming capabilities will vary depending on the dimmer control, load, and circuit installation.

Always refer to dimmer manufacturer instructions or a controls specialist for specific requirements.

Dimmer control brand names where identified above are trade names or registered trademarks of each respective company.