

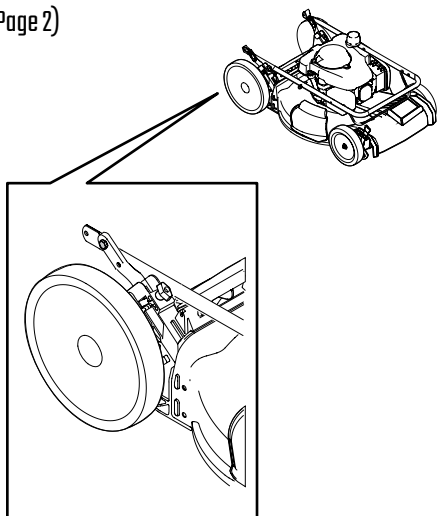


READ AND UNDERSTAND ALL INSTRUCTION, WARNING, AND DANGER LABELS.  
PARA INSTRUCCIONES EN ESPAÑOL, REFIÉRESE AL MANUAL DEL OPERADOR.

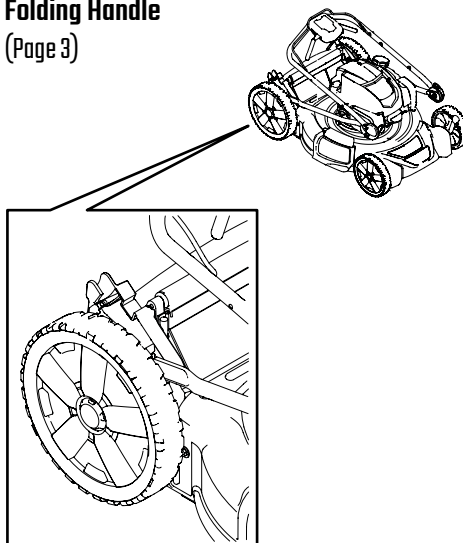


### Identify Handle Style

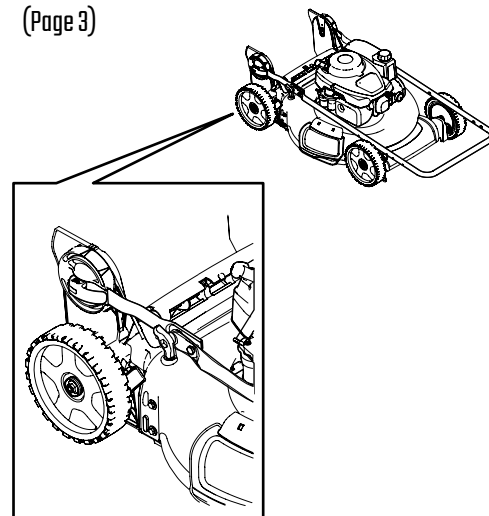
**Pull-Out Handle**  
(Page 2)



**Folding Handle**  
(Page 3)

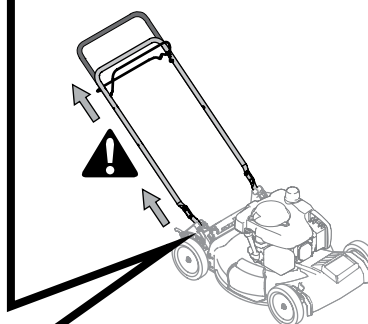
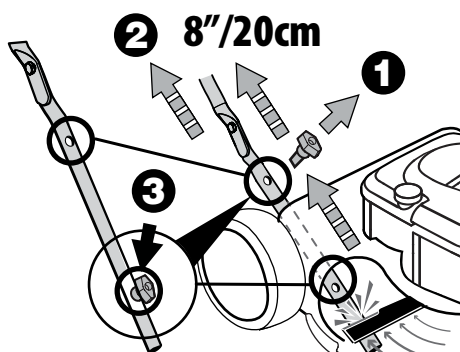


**Vertical Storage Handle**  
(Page 3)



### **IMPORTANT:** Pull-Out Handle (if equipped)

Before starting the mower engine ensure the handle has been moved up to the operating position and secured to the mower - Otherwise damage may occur to the blade or engine.



**IMPORTANT:** READ OPERATOR'S MANUAL AND ENGINE MANUAL  
THOROUGHLY AND FOLLOW THE IMPORTANT SAFE OPERATION PRACTICES  
BEFORE OPERATING.



**Need Help?**  
[www.CRAFTSMAN.com](http://www.CRAFTSMAN.com)  
or Call 1-888-331-4569



READ AND UNDERSTAND ALL INSTRUCTION, WARNING, AND DANGER LABELS.  
PARA INSTRUCCIONES EN ESPAÑOL, REFIÉRASE AL MANUAL DEL OPERADOR.



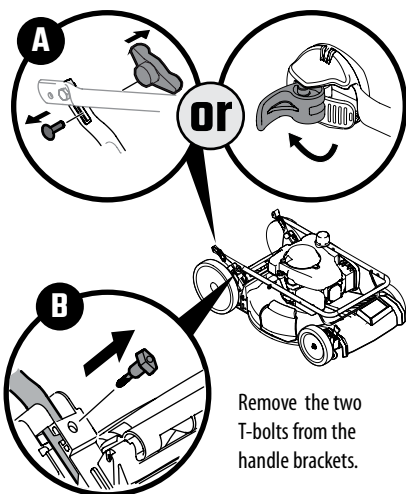
## Pull-Out Handle (if equipped)

**1**

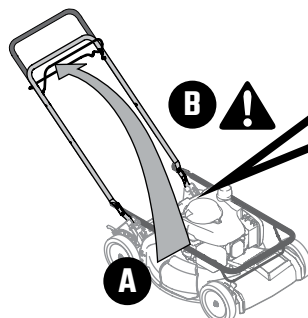
Remove the two knobs and carriage bolts securing the upper handle to the lower handle.

- or -

Unlock EZ-Fold handle release levers.



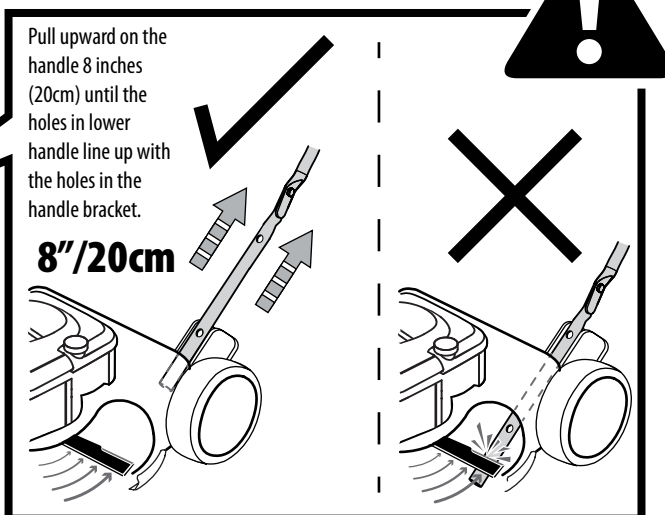
**2**



Pivot the upper handle up into the operating position

Pull upward on the handle 8 inches (20cm) until the holes in lower handle line up with the holes in the handle bracket.

**8"/20cm**

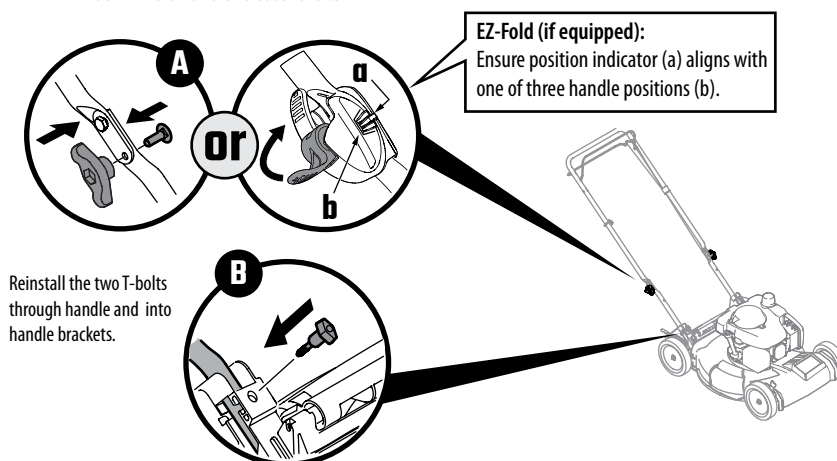


**3**

Reinstall the two knobs and carriage bolts to secure the upper handle to the lower handle.

- or -

Lock EZ-Fold handle release levers.



Go to STEP **4** ➡ Page 4



IMPORTANT: READ OPERATOR'S MANUAL AND ENGINE MANUAL THOROUGHLY AND FOLLOW THE IMPORTANT SAFE OPERATION PRACTICES BEFORE OPERATING.



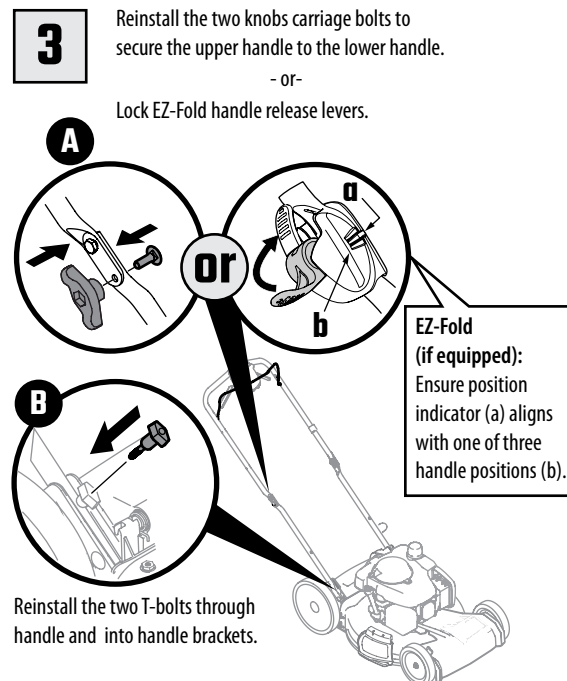
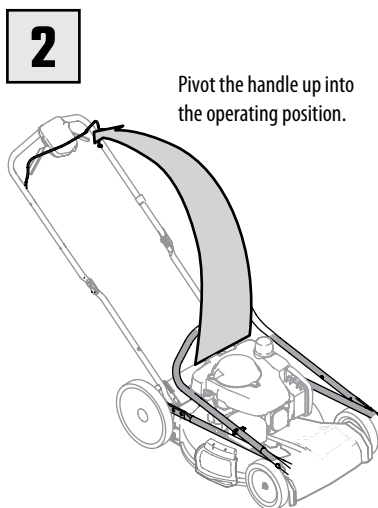
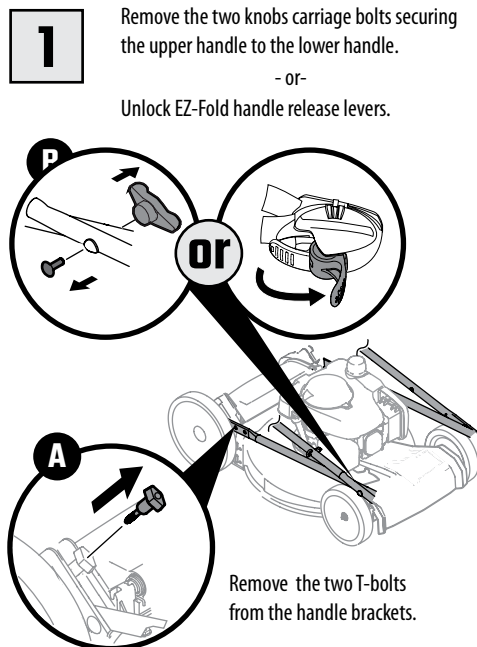
Need Help?  
[www.CRAFTSMAN.com](http://www.CRAFTSMAN.com)  
or Call 1-888-331-4569



READ AND UNDERSTAND ALL INSTRUCTION, WARNING, AND DANGER LABELS.  
PARA INSTRUCCIONES EN ESPAÑOL, REFIÉRASE AL MANUAL DEL OPERADOR.

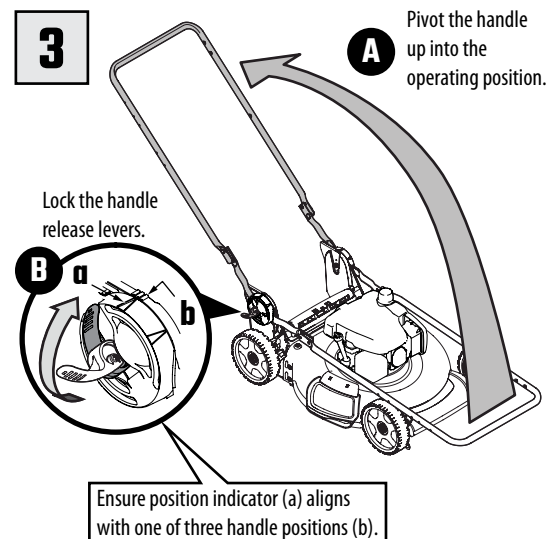
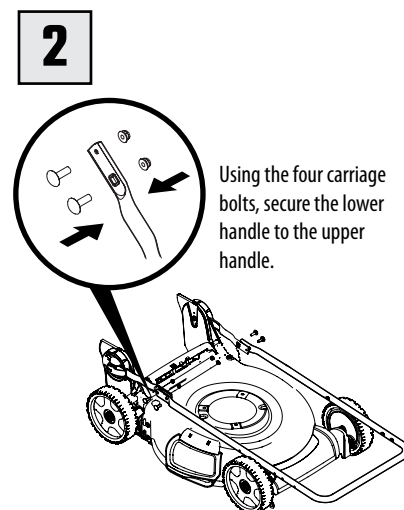
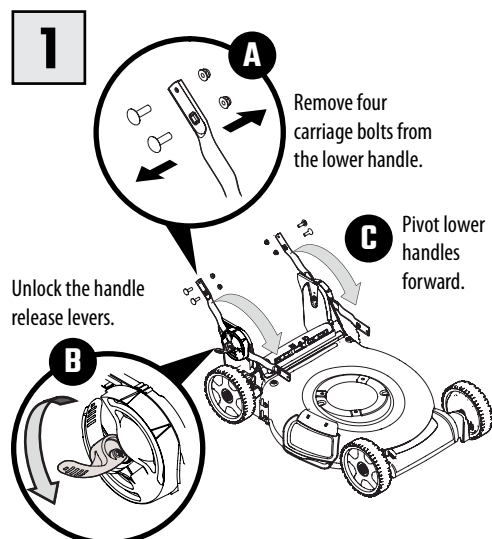


## Folding Handle (if equipped)



Go to STEP **4** ➡ Page 4

## Vertical Storage Handle (if equipped)



Go to STEP **4** ➡ Page 4



**IMPORTANT: READ OPERATOR'S MANUAL AND ENGINE MANUAL THOROUGHLY AND FOLLOW THE IMPORTANT SAFE OPERATION PRACTICES BEFORE OPERATING.**



**Need Help?**  
[www.CRAFTSMAN.com](http://www.CRAFTSMAN.com)  
or Call 1-888-331-4569

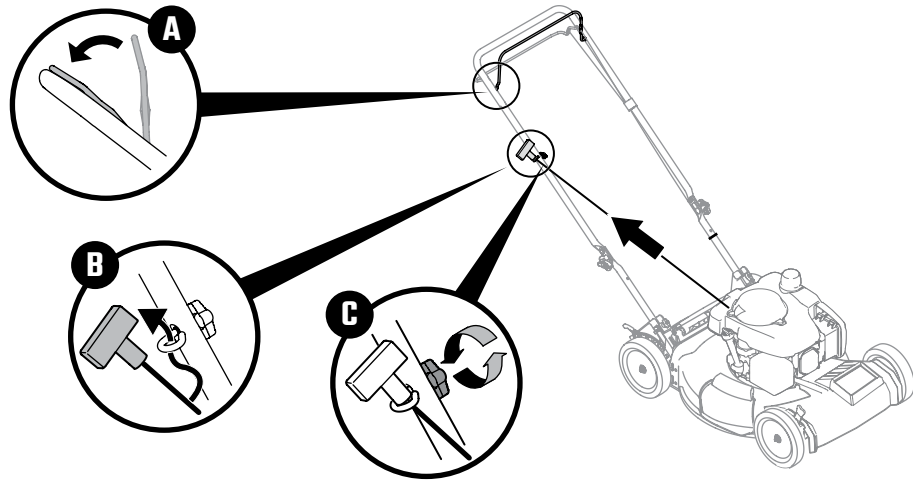


READ AND UNDERSTAND ALL INSTRUCTION, WARNING, AND DANGER LABELS.  
PARA INSTRUCCIONES EN ESPAÑOL, REFIÉRASE AL MANUAL DEL OPERADOR.



4

- A. Hold the blade control against the upper handle.
- B. Slowly pull recoil starter rope handle from engine and slip starter rope into the rope guide.
- C. Tighten rope guide wing knob.

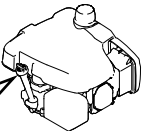


5

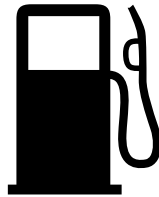


Pour the entire contents of the supplied oil bottle into the oil fill. Check the oil level by inserting the dipstick (not threading it) into the oil fill (Refer to the Operator's Manual).

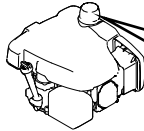
Oil fill located on the left side of most engines



6

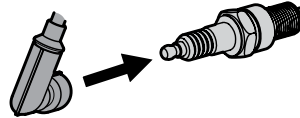


Fill tank with fresh gas to within 1/2-inch of top of tank. Do *not* overfill. Do not use E85 or fuel containing more than 10% Ethanol.

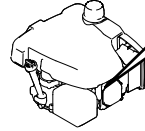


Fuel fill located on the left side of most engines

7



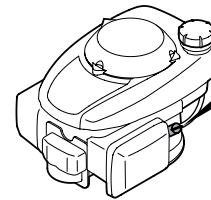
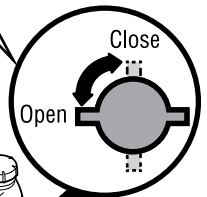
Make sure the spark plug boot is connected to the spark plug before attempting to start.



Spark plug located on the front of most engines

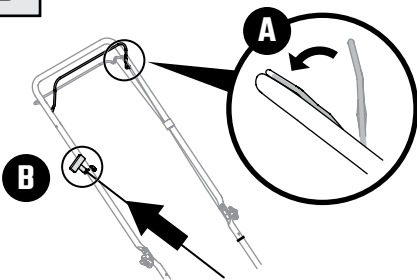
8

Fuel Valve (if equipped): Rotate the fuel valve into the OPEN position



9

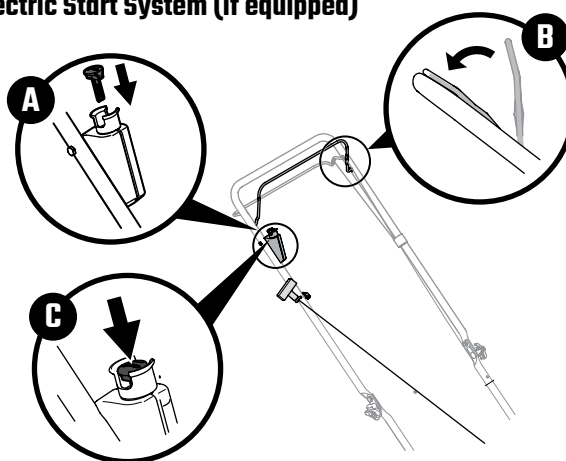
### Recoil Start (all models)



While standing behind the mower, pivot the blade control against the upper handle. Grasp the recoil starter rope handle and pull with quick, full-arm stroke. If the engine does not start after three pulls, wait a few minutes and repeat.

or

### Electric Start System (if equipped)



**NOTE:** For battery pack installation, refer to Operator's Manual.

Insert plastic electric starter push key into starter housing.

Standing behind the mower, pull the blade control back against the upper handle. While holding the blade control, push the electric starter push key to start the engine.

**NOTE:** Electric starter is equipped with an internal circuit breaker. If unit fails to start when starter button is depressed, wait one minute for breaker to reset, then attempt to start again.



**IMPORTANT: READ OPERATOR'S MANUAL AND ENGINE MANUAL THOROUGHLY AND FOLLOW THE IMPORTANT SAFE OPERATION PRACTICES BEFORE OPERATING.**



Need Help?

[www.CRAFTSMAN.com](http://www.CRAFTSMAN.com)  
or Call 1-888-331-4569

CRAFTSMAN® is a registered trademark of Stanley Black & Decker, Inc., used under license.

© 2019 CRAFTSMAN U.S. & Canada Only

CRAFTSMAN.com