



Call Us First!
DO NOT RETURN TO STORE.

**For immediate help with assembly or product information
call our toll-free number:**

1-888-827-9056

or email:

customerservice@backyardproductsllc.com

Our staff is ready to provide assistance.

April through October M - F 8:00 AM to 8:00 PM EST

Saturday 8:30 AM to 4:30 PM EST

November through March M - F 8:00 AM to 5:00 PM EST

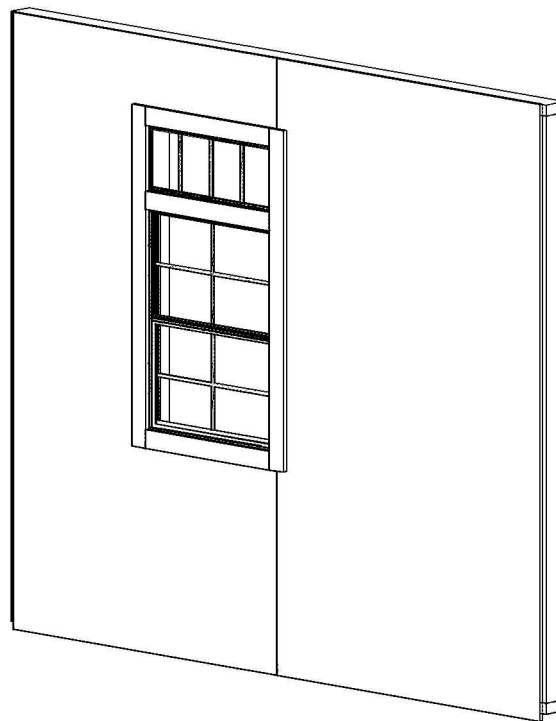
(This page is intentionally left blank.)

ASSEMBLY MANUAL

LARGE WINDOW w/ TRANSOM

OPTION KIT

KEEP THIS MANUAL FOR FUTURE REFERENCE



IMPORTANT! READ INSTRUCTIONS THOROUGHLY PRIOR TO BEGINNING ASSEMBLY.



BEFORE YOU BEGIN

BUILDING RESTRICTIONS AND APPROVALS

Be sure to check local building department and homeowners association for specific restrictions and/or requirements before building.

ENGINEERED DRAWINGS

Contact our Customer Service Team if engineered drawings are needed to pull local permits.

CHECK ALL PARTS

Inventory all parts listed on the next page. Contact our Customer Service Team if any parts are missing or damaged.

TOOLS REQUIRED

Drill / Driver

Utility Knife

Safety Glasses

Caulk Gun

Nail Gun or Hammer

Pencil

Tape Measure

Ladder

Square

Paint Tools

**Sabre Saw/Hand Saw/Circular Saw for Window Cutout

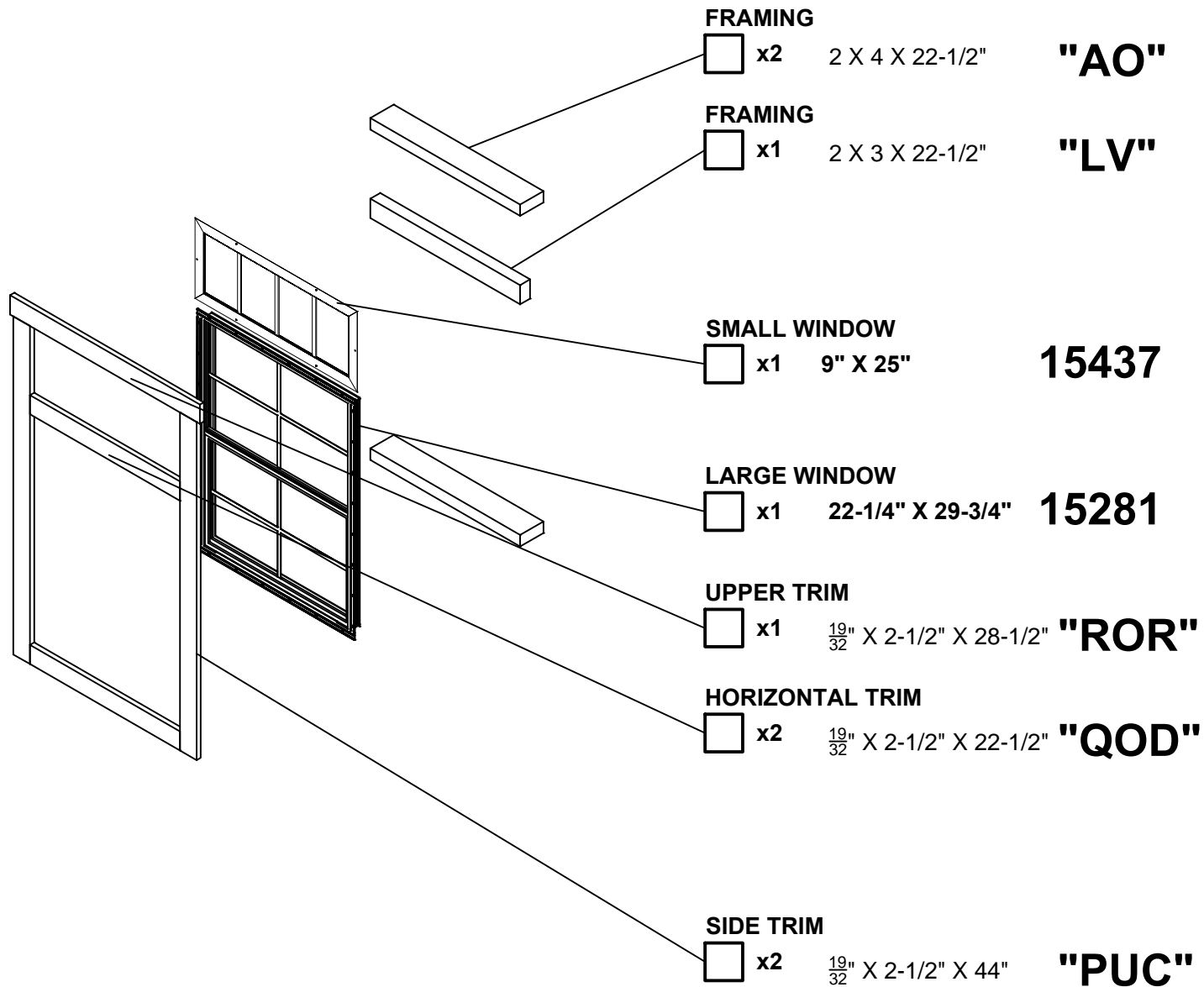
Safety! Always use approved safety glasses during assembly.

- CUSTOMER SERVICE -

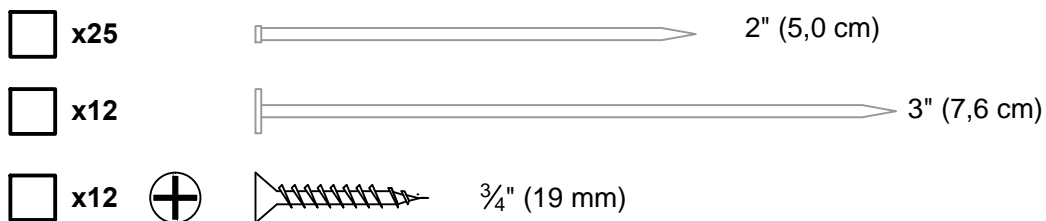
Call: 1-888-827-9056 email: customerservice@backyardproductsllc.com

PARTS LIST

PART STAMP ID:



FASTENER/HARDWARE BAG



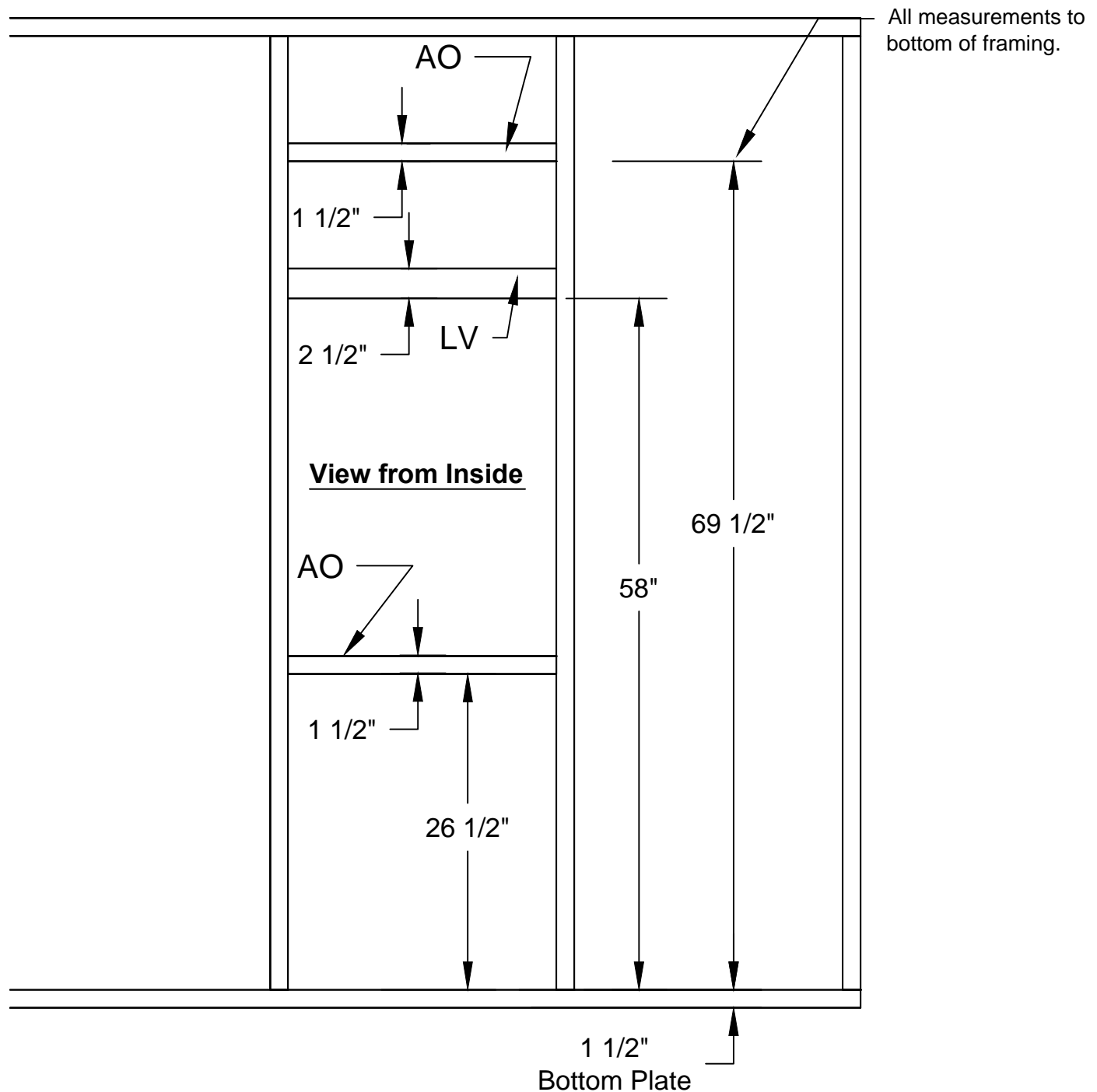
FRAMING

Parts Required:

X2	2 x 4 x 22-1/2"		AO
X1	2 x 3 x 22-1/2"		LV

ASSEMBLY STEPS / NOTES:

1. Mark measurements on wall studs as shown.



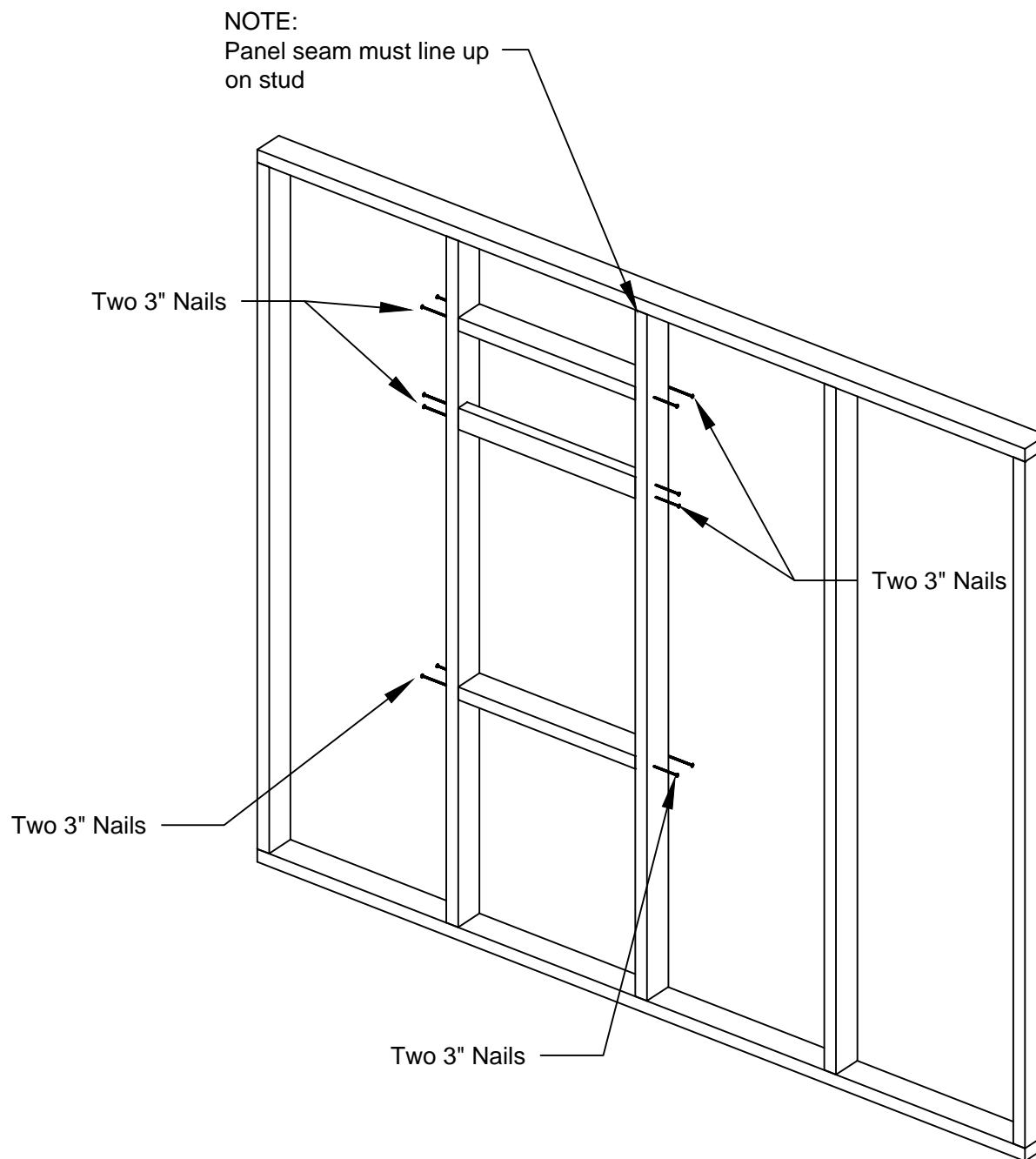
FRAMING

Fasteners Required:

X12 3" Nails

ASSEMBLY STEPS / NOTES:

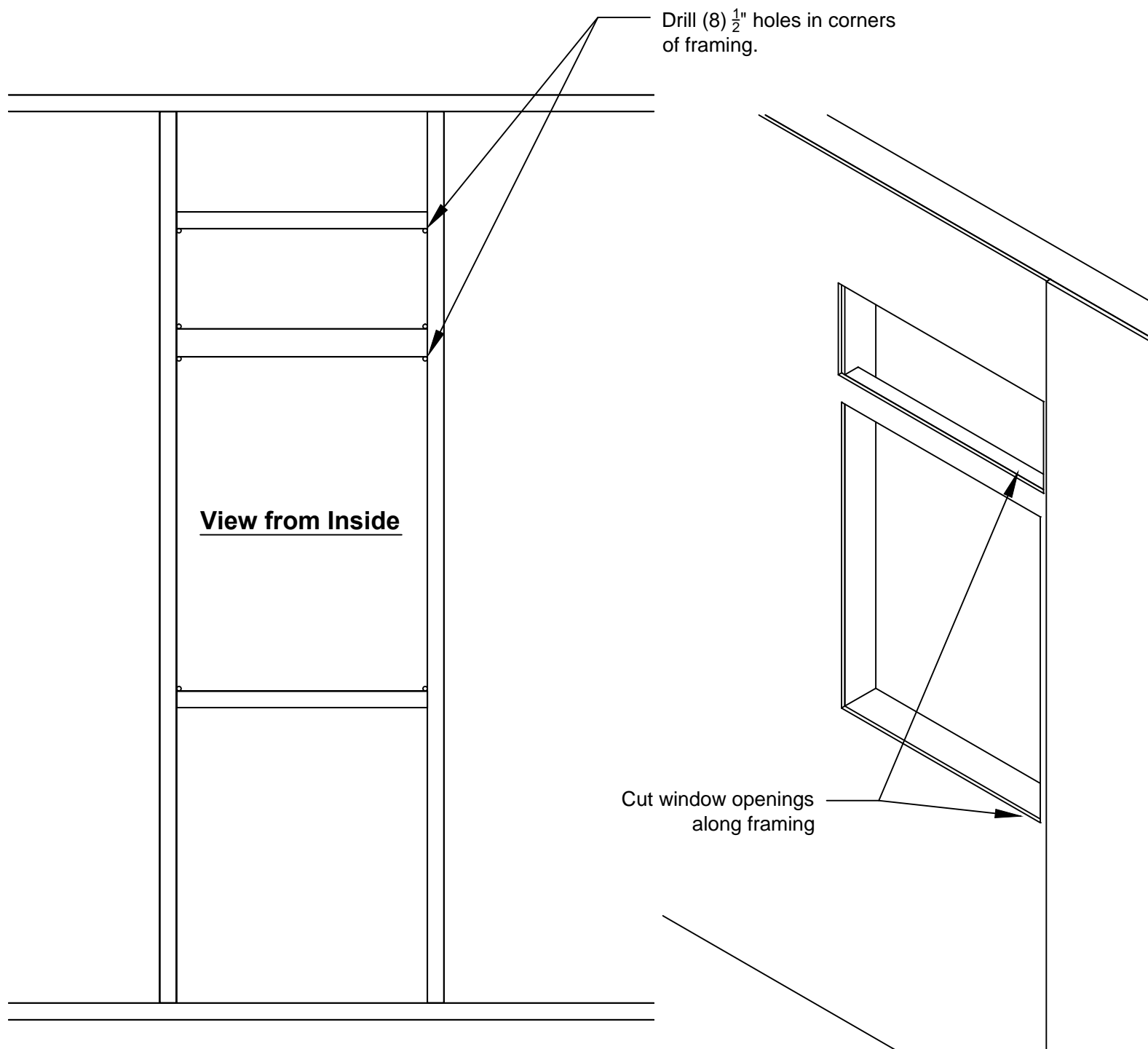
1. Use 3" nails as shown to install window framing centered on measurement marks.



WINDOW CUTOUT

ASSEMBLY STEPS / NOTES:

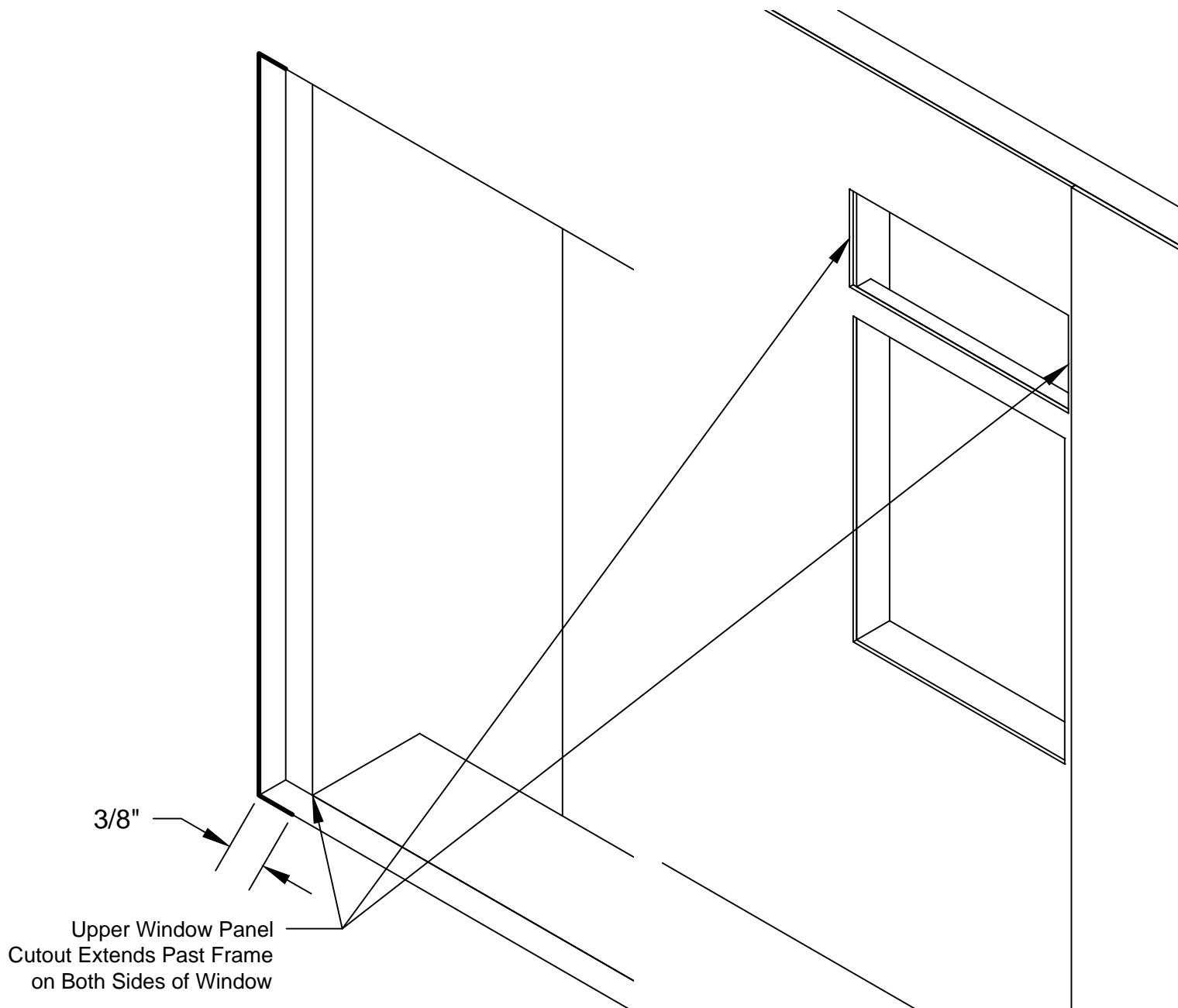
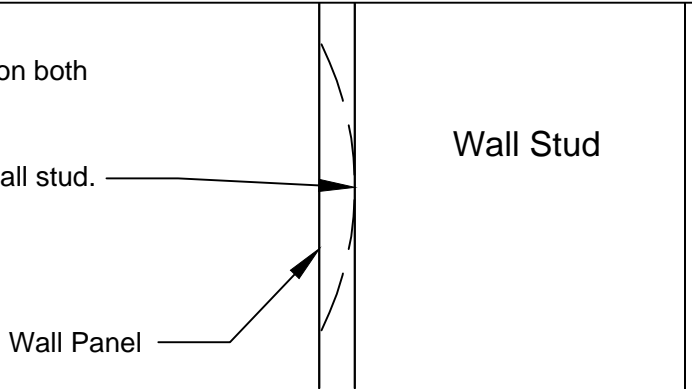
1. Drill a $\frac{1}{2}$ " hole in each corner of framing as shown. Eight (8) holes.
2. Cutout window opening beginning at one hole and cutting along framing.



WINDOW CUTOUT - NOTCH

ASSEMBLY STEPS / NOTES:

1. On Wall Panel, measure over $\frac{3}{8}$ " from inside of wall stud on both sides of window opening.
2. Set depth of circular saw to $\frac{3}{8}$ ", so it will not cut into the wall stud.
3. Use circular saw to cut out the strip of material.



WINDOW INSTALLATION

Parts Required:

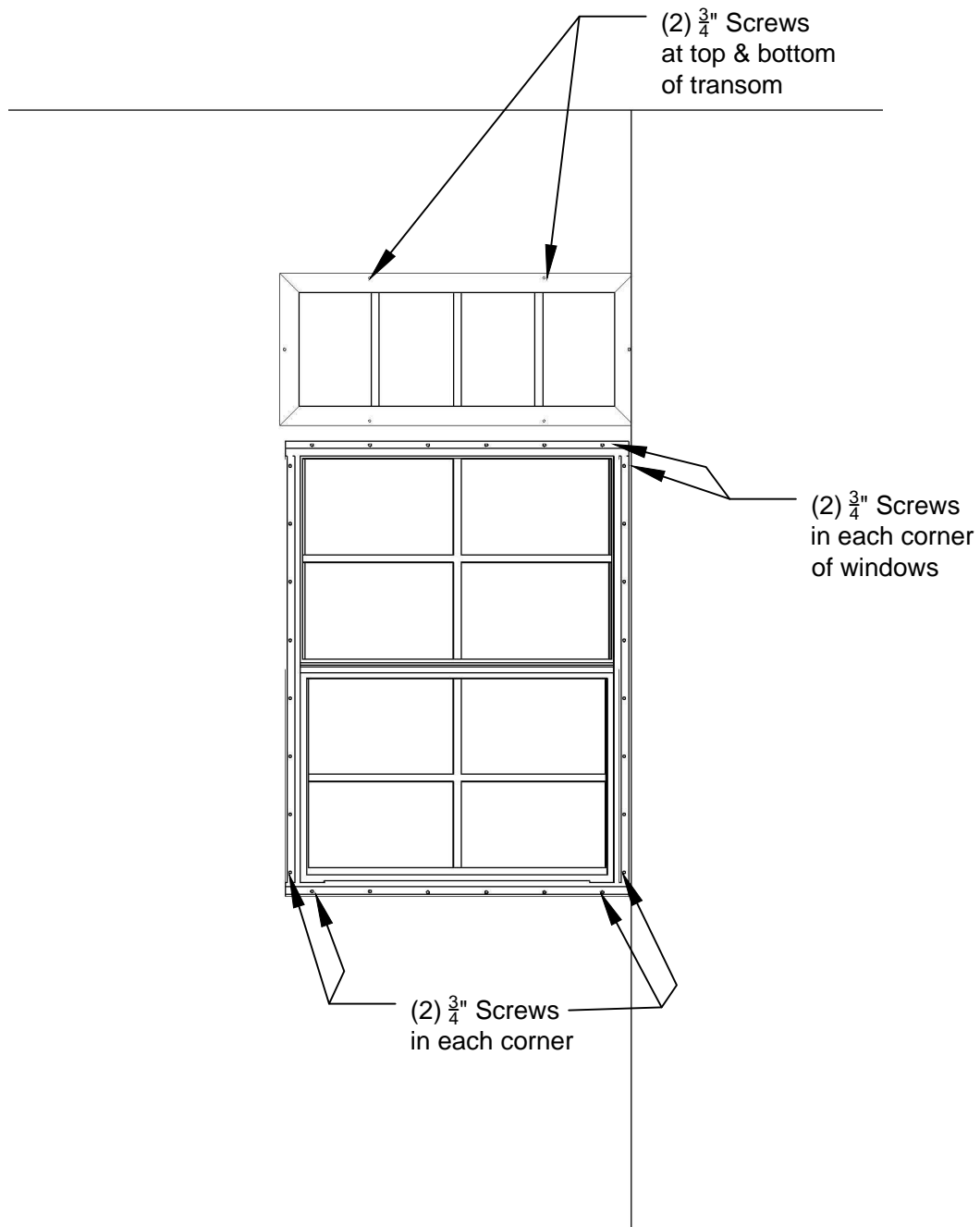
X1 Small Window
X1 Large Window

Fasteners Required:

X12 $\frac{3}{4}$ " Screws

ASSEMBLY STEPS / NOTES:

1. Insert windows into openings and screw in place using $\frac{3}{4}$ " screws as shown.
2. For large windows use (2) $\frac{3}{4}$ " screws in each corner.
3. Use (4) $\frac{3}{4}$ " screws for the transom two each at the top and bottom.



WINDOW TRIM

Parts Required:

X1 $\frac{19}{32}$ " x 2-1/2" x 28-1/2" ROR X2 $\frac{19}{32}$ " x 2-1/2" x 22-1/2" QOD
X2 $\frac{19}{32}$ " x 2-1/2" x 44" PUC

Fasteners Required:

X22 2" Finish Nails

ASSEMBLY STEPS / NOTES:

1. Install window trim using 2" finish nails as shown. Trim is flush to window frame.

