



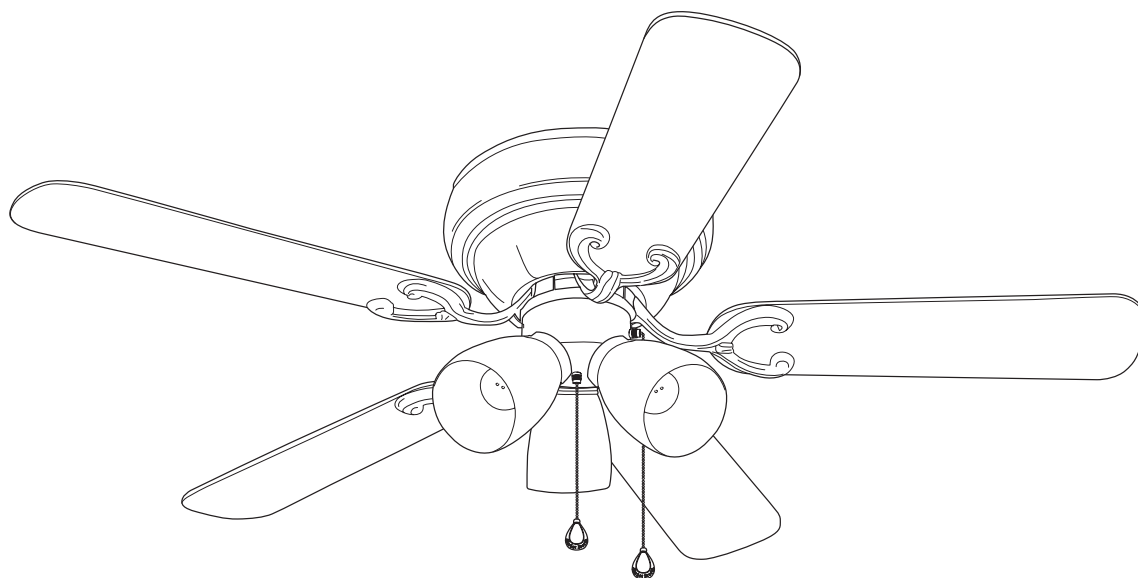
Harbor Breeze® is a registered trademark
of LF, LLC. All Rights Reserved.

ITEM #0317058
0317060

CHESHIRE II CEILING FAN

MODEL #CE-CSD42AB5C3
CE-CSD42LW5C3

Français p. 18



Federal regulations require ceiling fans with light kits manufactured or imported after January 1, 2009, to limit total wattage consumed by the light kit to 190W. Therefore, this fan is equipped with a wattage limiting device.



ATTACH YOUR RECEIPT HERE

Serial Number _____ Purchase Date _____



Questions, problems, missing parts? Before returning to your retailer, call our customer service department at **1-800-527-1292**, 8:30 a.m. - 5 p.m., CST, Monday-Friday.

TABLE OF CONTENTS

Safety Information	2 - 3
Package Contents	4
Hardware Contents	5
Preparation	5
Initial Installation	6 - 8
Wiring	8 - 10
Final Installation	10 - 12
Installing Fan Without Included Light Kit (Optional)	13
Operation Instructions	13 - 14
Care and Maintenance	15
Troubleshooting	15 - 16
Warranty	16
Replacement Parts List	17



SAFETY INFORMATION

READ AND SAVE THESE INSTRUCTIONS

Please read and understand this entire manual before attempting to assemble, install or operate the product. If you have any questions regarding the product, please call customer service at **1-800-527-1292**, 8:30 a.m.- 5:00 p.m., CST, Monday - Friday.

- Do not discard fan carton or foam inserts. Should this fan need to be returned to the factory for repairs, it must be shipped in its original packaging to ensure proper protection against damage that might exceed the initial cause for return.
- Make sure that all electrical connections comply with local codes, ordinances, the National Electrical Code and ANSI/NFPA 70-1999. Hire a qualified electrician or consult a do-it-yourself wiring handbook, available at Lowe's, if you are unfamiliar with installing electrical wiring.
- Make sure the installation site you choose allows a minimum clearance of 7 feet from the blades to the floor and at least 30 in. from the end of the blades to any obstruction.
- After you install the fan, make sure that all connections are secure to prevent the fan from falling.
- The net weight of this fan including the light kit is: 12.13 lbs. (5.5 kg).



SAFETY INFORMATION

⚠ WARNINGS



To reduce the risk of fire, electrical shock, or personal injury, mount fan to outlet box marked "ACCEPTABLE FOR FAN SUPPORT" and use mounting screws provided with the outlet box. Most outlet boxes commonly used for the support of lighting fixtures are not acceptable for fan support and may need to be replaced. Consult a qualified electrician if in doubt. Secure the outlet box directly to the building structure. The outlet box and its support must be able to support the moving weight of the fan (at least 35 lbs.). Do NOT use a plastic outlet box.

To avoid personal injury, the use of gloves may be necessary while handling fan parts with sharp edges.

To reduce the risk of fire, electrical shock, or personal injury, wire connectors provided with this fan are designed to accept only one 12 gauge house wire and two lead wires from the fan. If your house wire is larger than 12 gauge or there is more than one house wire to connect to the two fan lead wires, consult an electrician for the proper size wire connectors to use.

To reduce the risk of fire or electrical shock, do not use the fan with any solid state speed control device or control fan speed with a full range dimmer switch.

To reduce the risk of fire, electrical shock, or personal injury, do not bend the blade arms when installing them, balancing the blades, or cleaning the fan. Do not insert objects between the rotating fan blades.

To reduce the risk of personal injury, use **only** parts provided with this fan. **The use of parts OTHER than those provided with this fan will void the warranty.**

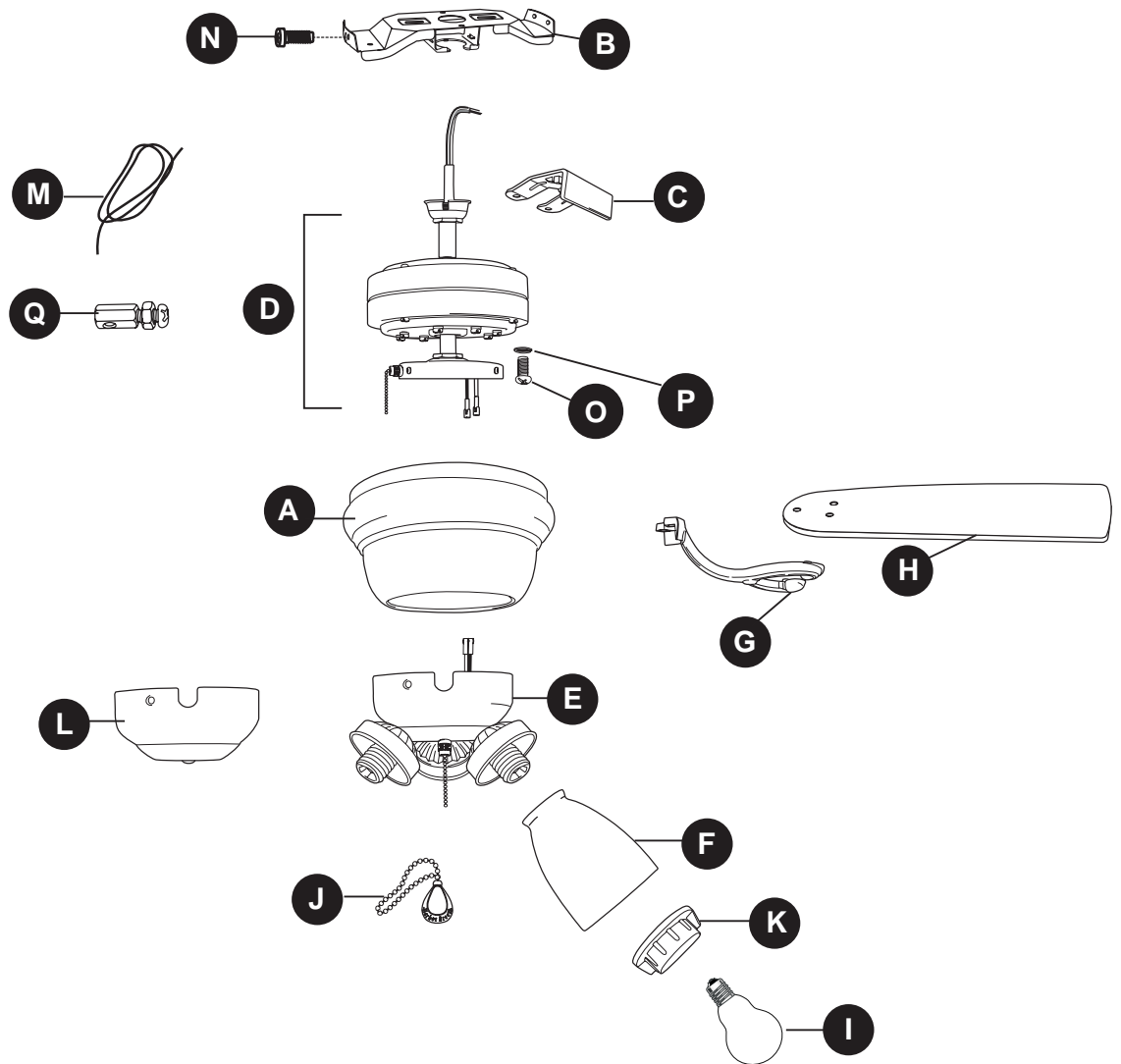
This fan **MUST** be installed with the safety cable provided with the fan. Failure to use the safety cable provided may result in personal injury, damage to the fan or damage to other property.

CAUTIONS

Before proceeding, be sure to shut off electricity at main switch or circuit breaker in order to avoid electrical shock.

Read all instructions and safety information before installing your new fan. Review the accompanying assembly diagrams.

PACKAGE CONTENTS

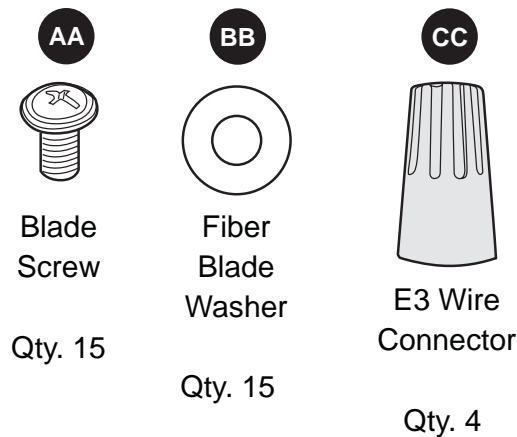


PART	DESCRIPTION	QUANTITY
A	Motor Housing	1
B	Mounting Bracket	1
C	Plastic Lock Tab	1
D	Motor Assembly	1
E	Light Kit Fitter	1
F	Glass Shade	3
G	Blade Arm	5
H	Blade	5
I	Candelabra Base Bulb	3
J	Pull Chain Extension	2
K	Socket Ring	3

PART	DESCRIPTION	QUANTITY
L	Extra Switch Housing	1
M	Safety Cable (preassembled)	1
N	Motor Housing Mounting Screw (preassembled)	4
O	Motor Screw (preassembled)	10
P	5.4 M/M Lock Washer (preassembled)	10
Q	Vice (preassembled)	1

! IMPORTANT REMINDER: You must use the parts provided with this fan for proper installation and safety. **!**

HARDWARE CONTENTS (shown actual size)



PREPARATION

Before beginning assembly and installation of product, make sure all parts are present. Compare parts with package contents list and hardware contents above. If any part is missing or damaged, do not attempt to assemble the product. Contact customer service for replacement parts.

Estimated Assembly Time: 120 minutes

Tools Required for Assembly (not included): Electrical Tape, Phillips Screwdriver, Pliers, Safety Glasses, Stepladder and Wire Strippers

Helpful Tools (not included): AC Tester Light, Tape Measure, Do-It-Yourself-Wiring Handbook (available at Lowe's) and Wire Cutters

Bulbs Required (included): 3 candelabra base 60-watt max. bulbs

⚠ DANGER: When using an existing outlet box, make sure the outlet box is securely attached to the building structure and can support the full weight of the fan. Failure to do this can result in serious injury or death. The stability of the outlet box is essential in minimizing wobble and noise in the fan after installation is complete.

⚠ CAUTION: Be sure outlet box is properly grounded and that a ground wire (green or bare) is present.

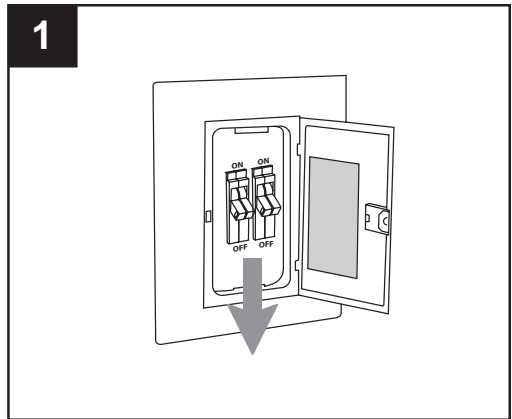
After opening top of carton, remove mounting hardware package from foam inserts. Remove motor from packing and place on carpet or on foam to avoid damage to finish.

⚠ CAUTION: Carefully check all screws, bolts and nuts on fan motor assembly to ensure that they are secured.

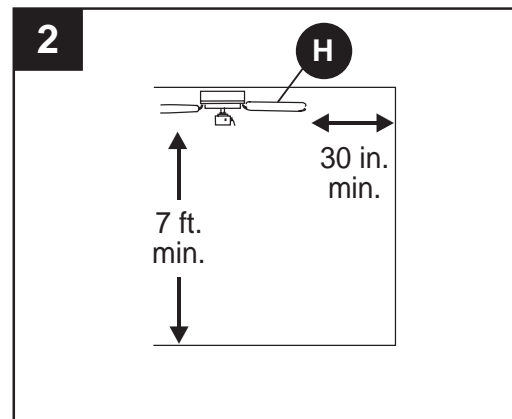
INITIAL INSTALLATION

1. Turn off circuit breakers and wall switch to the fan supply line leads. (Fig. 1)

⚠ DANGER: Failure to disconnect power supply prior to installation may result in serious injury or death.

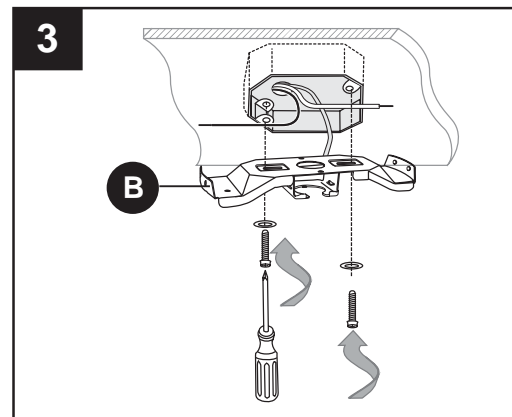


2. Check to make sure blades (H) are at least 30 in. from any obstruction and at least 7 ft. above the floor. (Fig. 2)

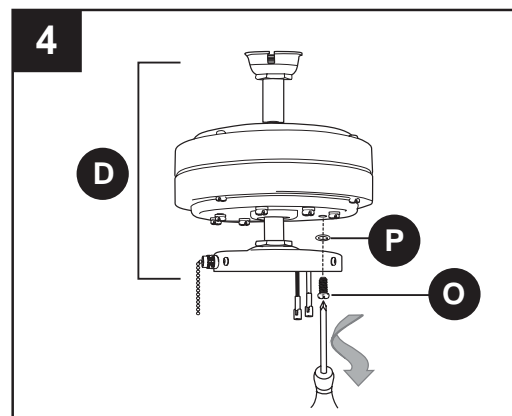


3. Secure mounting bracket (B) to outlet box using screws, spring washers, and flat washers provided with the outlet box. (Fig. 3) Pull wires from outlet box through center hole in mounting bracket (B).

***Note:** It is very important that you use the proper hardware when installing the mounting bracket (B) as this will support the fan.



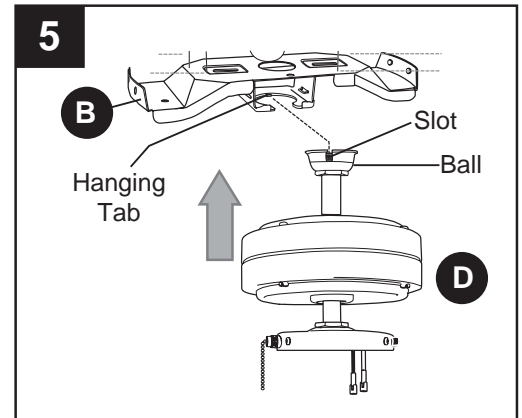
4. Remove motor screws (O) and 5.4 M/M lock washers (P) from underside of motor and save for blade arm (G) attachment later on. [If there are plastic motor blocks installed with motor screws (O) and 5.4 M/M lock washers (P), discard the plastic motor blocks.] (Fig. 4)



INITIAL INSTALLATION

5. Install ball end of motor assembly (D) into mounting bracket (B) opening. Align slot in ball with tab in mounting bracket (A). (Fig. 5)

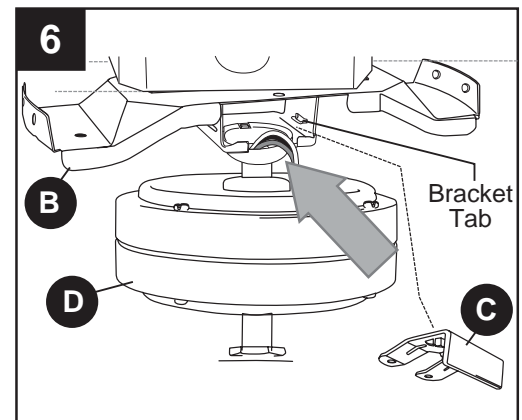
⚠ DANGER: Failure to align slot in ball with tab in mounting bracket (B) may result in serious injury or death. (Fig. 5)



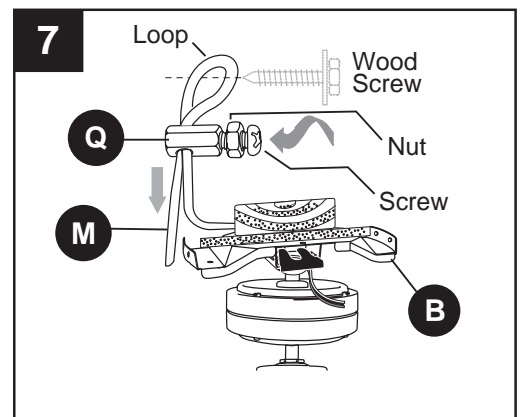
6. To ensure the safety of the installation and to prevent the motor assembly (D) from becoming or coming loose, use the plastic lock tab (C). Slide plastic lock tab (C) **under** bracket tabs so that it will snap into place. (Fig. 6)

IMPORTANT: Keep in mind that it will require **some force to fully insert the plastic lock tab (C) so that it does not move or come out once in the correct position.**

NOTE: Make sure that motor assembly (D) does not swing from side to side too easily--if it does, check to be sure that the plastic lock tab (C) is FULLY INSERTED under the bracket tabs and all the way to the back of the mounting bracket (B).

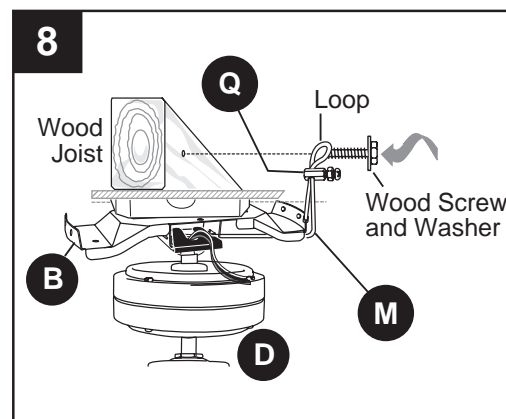


7. Adjust safety cable (M) length by loosening screw and nut on the safety cable vice (Q) and pulling on the safety cable (M). Adjust slack in cable to a hands length and tighten screw and nut on vice (Q) securely. The loop at the end of the safety cable (M) should just fit over the threads on the wood screw. (Fig. 7) *Test safety cable (M) by pulling on loose end with pliers. If the safety cable (M) slips, then vice (Q) screw and nut must be set tighter.*



INITIAL INSTALLATION

- Find a secure attachment point (wood ceiling joist highly recommended) and secure safety cable (M). It will be necessary to use a heavy duty wood screw, washer and lock washer (sold separately) with the safety cable (M) loop. (Fig. 8)



WIRING

⚠ WARNING: To reduce the risk of fire, electrical shock, or personal injury, wire connectors provided with this fan are designed to accept only one 12 gauge house wire and two lead wires from the fan. If your house wire is larger than 12 gauge or there is more than one house wire to connect to the two fan lead wires, consult an electrician for the proper size wire connectors to use.

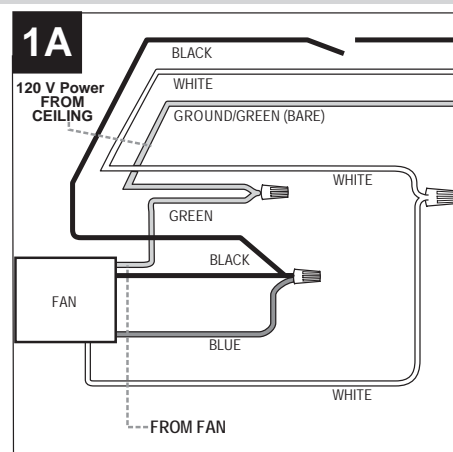
⚠ CAUTION: Be sure outlet box is properly grounded and that a ground (green or bare) wire is present.

⚠ WARNING: If house wires are different colors than referred to in the following steps, stop immediately. A professional electrician is recommended to determine wiring.

- Choose wiring diagram (Fig. 1A, Fig. 1B or Fig. 1C) that fits your situation and make appropriate wiring connections as follows: **[NOTE: For each wire connection below, and on the following page, use one of the wire connectors (CC) provided, making sure to screw wire connector (CC) on in a clockwise direction.]**

1A. FAN AND LIGHT CONTROLLED BY PULL CHAINS: Connect **BLACK** and **BLUE** wire from fan to **BLACK** wire from ceiling. Connect **WHITE** wire from fan to **WHITE** wire from ceiling. Connect **GROUND (GREEN)** wire from mounting bracket to **BARE/GREEN** wire from ceiling. (Fig. 1A)

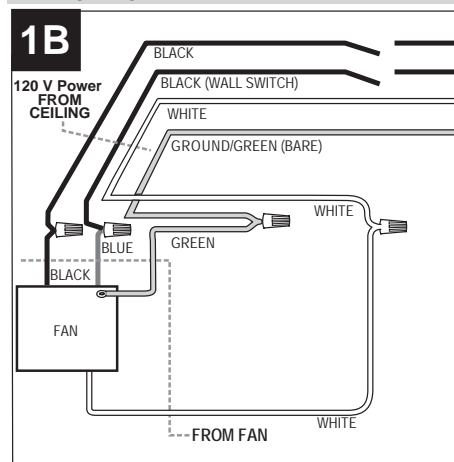
FAN AND LIGHT CONTROLLED BY PULL CHAINS



WIRING

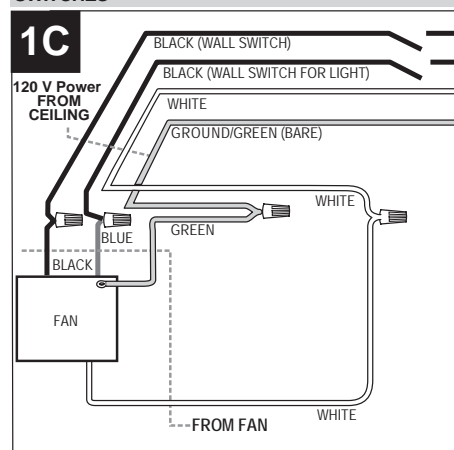
1B. FAN CONTROLLED BY PULL CHAIN, LIGHT BY WALL SWITCH: If you intend to control the fan light with a separate wall switch, connect **BLACK** wire from fan to **BLACK** wire from ceiling. Connect **BLUE** wire from fan to the **BLACK** wire from the independent wall switch for the light. Connect **WHITE** wire from fan to **WHITE** wire from ceiling. Connect **GROUND (GREEN)** wire from mounting bracket to **BARE/GREEN** wire from ceiling. (Fig. 1B)

FAN CONTROLLED BY PULL CHAIN, LIGHT BY WALL SWITCH



1C. FAN AND LIGHT CONTROLLED BY TWO WALL SWITCHES: If you intend to control the fan and light with separate wall switches, connect **BLACK** wire from fan to **BLACK** wire from the independent wall switch for the fan. Connect **BLUE** wire from fan to the **BLACK** wire from the other independent wall switch for the light. Connect **WHITE** wire from fan to **WHITE** wire from ceiling. Connect **GROUND (GREEN)** wire from mounting bracket to **BARE/GREEN** wire from ceiling. (Fig. 1C)

FAN AND LIGHT CONTROLLED BY TWO WALL SWITCHES

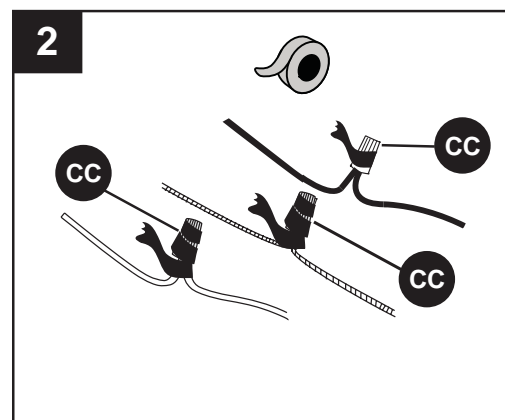


Note: Black wire is hot power for fan. Blue wire is hot power for light kit. White wire is common for fan and light kit. Green or bare wire is ground.

2. Wrap electrical tape around each individual wire connector (CC) down to the wire as shown in Fig. 2.

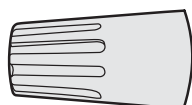
! WARNING: Make sure no bare wire or wire strands are visible after making connections. Place green and white connections on opposite side of box from the black and blue (if applicable) connections.

Turn spliced/taped wires upward and gently push wires and wire connectors (CC) into outlet box.



Hardware Used

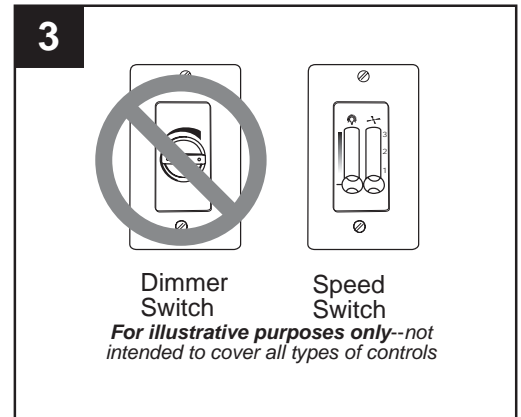
CC E3 Wire Connector



x4

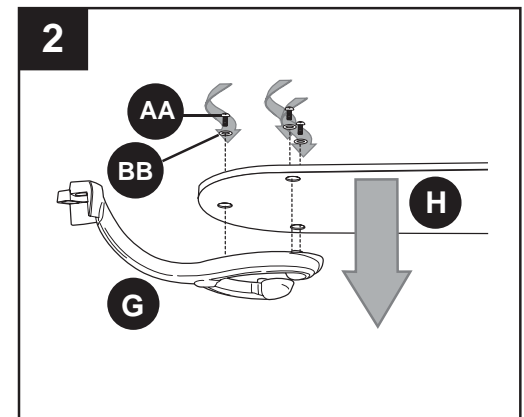
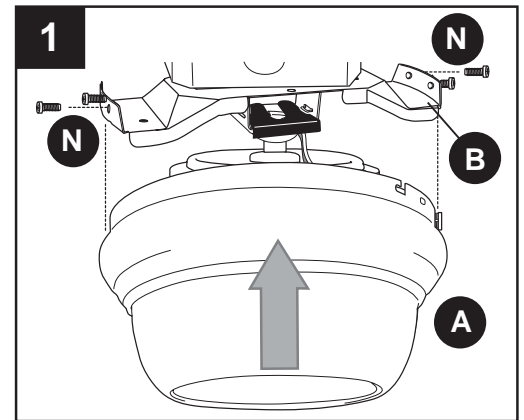
WIRING

3. **IMPORTANT:** Using a full range dimmer switch to control fan speed will cause a loud humming noise from fan. To reduce the risk of fire or electrical shock, do NOT use a full range dimmer switch to control fan speed. (Fig. 3)

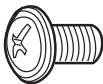



FINAL INSTALLATION

1. Temporarily raise motor housing (A) to mounting bracket (B) to determine which two motor housing mounting screws (N) align with slotted holes in motor housing (A) and partially loosen these two motor housing mounting screws (N). Remove the other two motor housing mounting screws (N). Now, lift motor housing (A) to mounting bracket (B) again, aligning slotted holes in motor housing (A) with loosened motor housing mounting screws (N) in mounting bracket (B). Twist motor housing (A) to lock. Re-insert motor housing mounting screws (N) that were previously removed. Tighten all four motor housing mounting screws (N) securely. (Fig. 1)
2. Partially insert three blade screws (AA), along with three fiber blade washers (BB), to attach one blade arm (G) to a blade (H). Then, tighten each blade screw (AA), starting with the one in the middle (Fig. 2) Repeat with remaining blades (H).



Hardware Used

AA	Blade Screw		x15
BB	Fiber Blade Washer		x15

FINAL INSTALLATION

3. Locate motor screws (O) and ~~5.4 M/M~~ lock washers (P) that were removed in Step 4 on page 6.

Insert two motor screws (O), along with ~~5.4 M/M~~ lock washers (P), through one blade arm (G) to attach blade arm (G) to motor. Tighten motor screws (O) securely. (Fig. 3) Repeat with remaining blade arms (G), making sure to completely secure each blade arm (G) before proceeding with the next.

Note: For easy access to motor screws (O), turn switch housing plate so that the flat part of the switch housing plate aligns with the two motor screws (O) on blade arm (G).

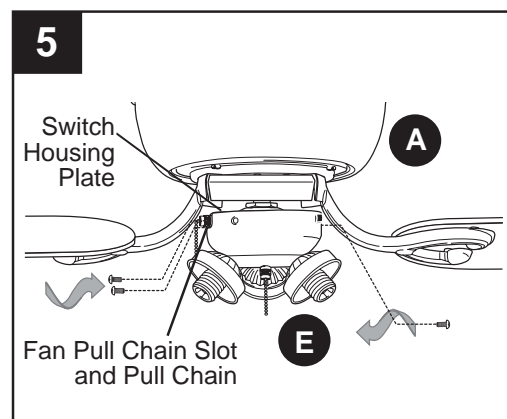
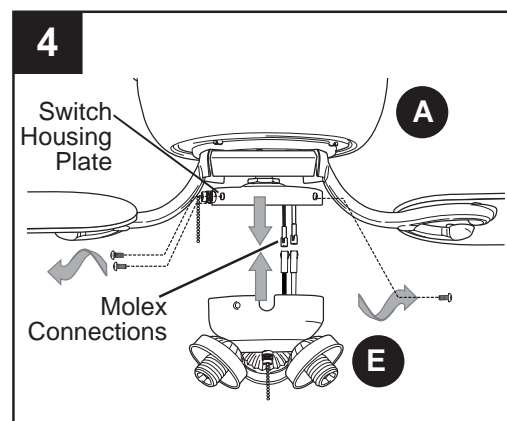
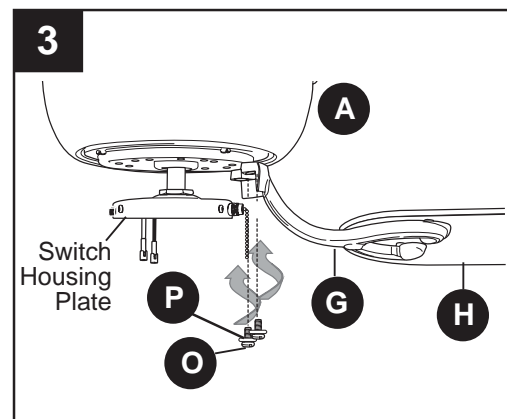
Repeat Step 3 with remaining blade arms (G), making sure to completely secure each blade arm (G) before proceeding with the next.

4. **If you wish to USE the light kit**, remove three screws from switch housing plate on underside of motor. Locate **BLUE** (or **BLACK**) and **WHITE** wires in switch housing plate labeled FOR LIGHT and remove plastic from these two wires.

Connect **WHITE** wire from light kit fitter (E) to **WHITE** wire from switch housing plate. Connect **BLACK** wire from light kit fitter (E) to **BLUE** (or **BLACK**) wire from switch housing plate. Make sure that molex connections are secure. (Fig. 4) Continue with Step 5.

If you do NOT wish to use the light kit, please go to section entitled “Installing Fan Without Included Light Kit” on page 13.

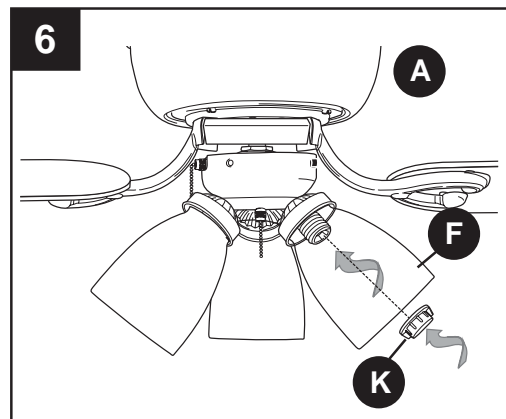
5. Arrange wires and molex connections in switch housing plate. Align fan pull chain slot with fan pull chain and attach light kit fitter (E) to fan with screws that were removed in the previous step. Use a Phillips screwdriver to secure all three screws. (Fig. 5)



FINAL INSTALLATION

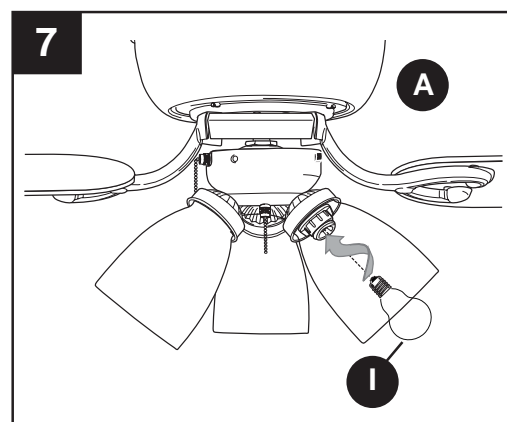
6. Remove socket ring (K) from each socket. Use one socket ring (K) to attach each glass shade (F). (Fig. 6)

Note: Do not overtighten socket rings (K) as glass may crack or break.

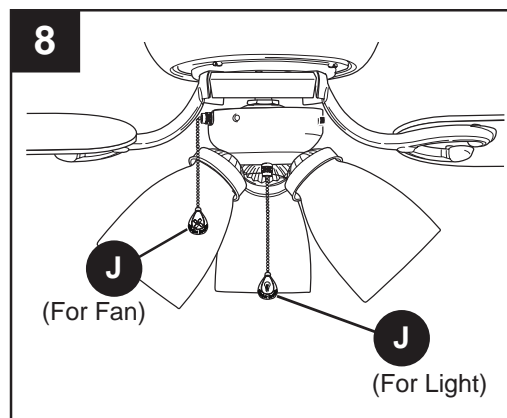


7. Install three candelabra base 60-watt max. bulbs (I) included. (Fig. 7)

Important: When you need to replace bulbs, please allow bulbs and glass shades (F) to cool down before handling them.

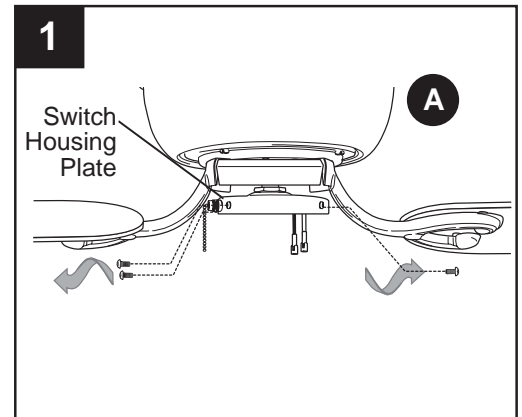


8. The pull chain extensions (J) supplied in one of the hardware packs or custom pull chain extensions (sold separately) may be attached to fan and light pull chains. (Fig. 8)

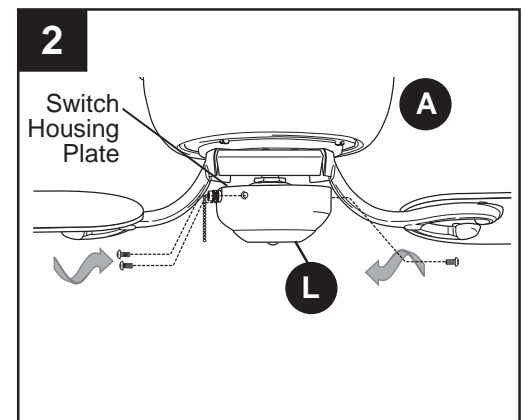


INSTALLING FAN WITHOUT INCLUDED LIGHT KIT (OPTIONAL)

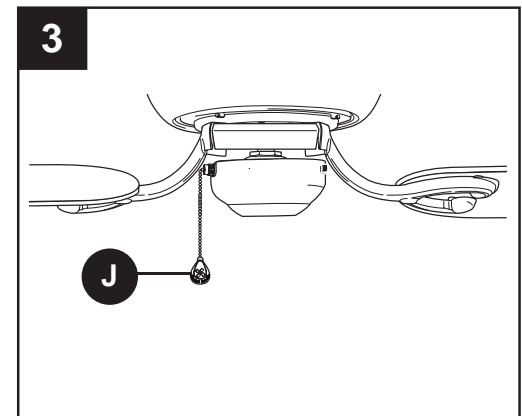
1. *If you do NOT wish to use the light kit*, remove three screws from switch housing plate. (Fig. 1)



2. Align holes in extra switch housing (L) with holes in switch housing plate. (**Note:** The wide gap in the top edge of the extra switch housing (L) should align with the reverse switch on the switch housing plate for the proper fit.) Re-insert screws that were previously removed. Use a Phillips screwdriver to secure all screws. (Fig. 2)

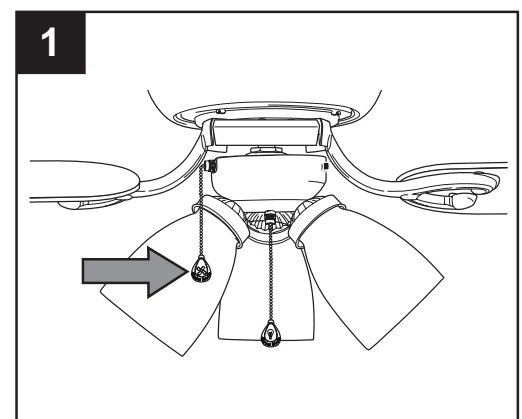


3. The pull chain extension (J) supplied in one of the hardware packs or custom pull chain extension (sold separately) may be attached to fan. (Fig. 3)



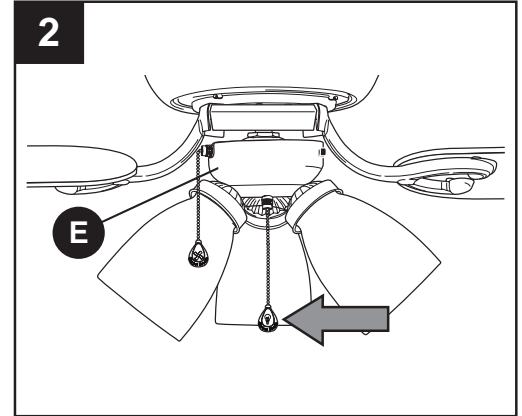
OPERATION INSTRUCTIONS

1. The pull chain on the switch housing plate has four positions to control **fan** speed. One pull is HIGH, two is MEDIUM, three is LOW and four turns the fan OFF. (Fig. 1)



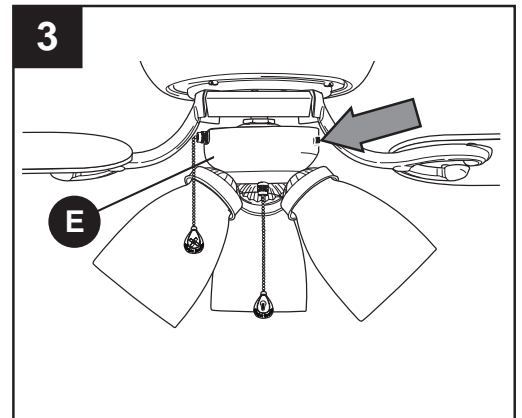
OPERATION INSTRUCTIONS

2. The pull chain in the center is used to turn the **lights** ON or OFF. (Fig. 2)



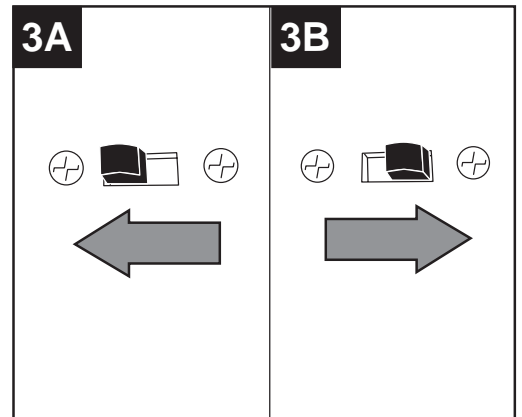
3. Use the fan reverse switch, located on the light kit fitter (E), to optimize your fan for seasonal performance. (Fig. 3) A ceiling fan will allow you to raise your thermostat setting in summer and lower your thermostat setting in winter without feeling a difference in your comfort.

Note: Wait for fan to stop before moving the reverse switch.

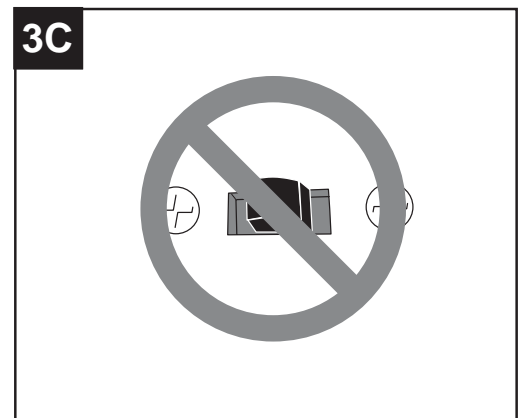


3A. In **warmer** weather, setting the reverse switch in the **LEFT** position will result in downward airflow creating a wind chill effect. (Fig. 3A)

3B. In **cooler** weather, setting the reverse switch in the **RIGHT** position will result in upward airflow that can help move stagnant, hot air off the ceiling area. (Fig. 3B)



3C. **IMPORTANT:** Reverse switch must be set either **completely LEFT** or **completely RIGHT** for fan to function. If the reverse switch is set in the **middle** position (Fig. 3C), fan will not operate.



CARE AND MAINTENANCE

At least twice each year, lower motor housing (A) to check motor assembly (D), and then tighten all screws on fan. Clean motor housing (A) with only a soft brush or lint-free cloth to avoid scratching the finish. Clean blades (H) with a lint-free cloth. You may occasionally apply a light coat of furniture polish to wood blades for added protection.

Important: Shut off main power supply before beginning any maintenance. Do not use water or a damp cloth to clean the ceiling fan.

TROUBLESHOOTING

If you have any questions regarding the product please call customer service at **1-800-527-1292**, 8:30 a.m. - 5 p.m., CST, Monday - Friday.

⚠ Warning: Before beginning work, shut off the power supply to avoid electrical shock.

PROBLEM	POSSIBLE CAUSE	CORRECTIVE ACTION
Fan does not move.	1. Reverse switch not engaged. 2. Power is off or fuse is blown. 3. Faulty wire connection.	1. Push switch firmly either to the right or to the left. 2. Turn power on or check fuse. 3. Turn power off. Loosen motor housing (A) and check all connections.
Noisy operation.	1. Blades (H) are loose. 2. Cracked blade (H). 3. Full range dimmer switch 4. Fan is new. 5. Motor housing (A) is loose.	1. Tighten all blade screws (AA). 2. Replace blade (H). 3. Replace with an approved speed control device. 4. Allow fan a "break in" period of a few days, especially when running the fan at Medium and High speeds. 5. Turn power off. Carefully loosen motor housing (A) and verify that mounting bracket (B) is secure according to instructions on page 10.
Excessive wobbling.	1. Blades (H) are loose. 2. Blade arms (G) incorrectly attached. 3. Unbalanced blades (H). 4. Fan not securely mounted.	1. Tighten all blade screws (AA). 2. Re-install blade arms (G). 3. Switch one blade (H) with a blade (H) from the opposite side. 4. Turn power off. Carefully loosen motor housing (A) and verify that mounting bracket (B) is secure.
Fan operates but lights fail (if applicable).	1. Bulb(s) not installed correctly. 2. Wires in outlet box not wired properly. 3. Wall switch to fan is off.	1. Re-install bulb(s). 2. Check wires in outlet box and, if necessary, re-wire according to instructions on pages 8 and 9. 3. Make sure that wall switch to fan is on.

TROUBLESHOOTING

PROBLEM	POSSIBLE CAUSE	CORRECTIVE ACTION
	4. Wires in light kit fitter (E) not wired correctly.	4. Check wires in light kit fitter (E) and, if necessary, re-wire according to instructions on page 11.
	5. Light kit is lamped with more than the allowable 190W, causing the wattage limiting device to interrupt the flow of electricity to the light kit.	5. Lamp light kit with bulbs that total no more than 190W.

Note: A small amount of "wobble" is normal and should not be considered a defect.

WARRANTY

LIMITED LIFETIME WARRANTY: Litex Industries warrants this fan to be free from defects in workmanship and materials present at time of shipment from the factory for Lifetime limited from the date of purchase. This warranty applies only to the original purchaser. Litex Industries agrees to correct any defect at no charge or, at our option, replace the ceiling fan with a comparable or superior model.

To obtain warranty service, present a copy of your sales receipt as proof of purchase. All cost of removal and reinstallation are the express responsibility of the purchaser. Any damage to the ceiling fan by accident, misuse or improper installation, or by using parts not produced by the manufacturer of this fan or affixing accessories not produced by the manufacturer of this fan, are the purchaser's own responsibility. Litex Industries assumes no responsibility whatsoever for fan installation during the limited lifetime warranty. Any service performed by an unauthorized person will render the warranty invalid.

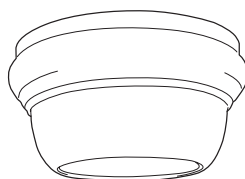
Due to varying climatic conditions, this warranty does not cover changes in brass finish, rusting, pitting, tarnishing, corroding or peeling. Brass finish fans maintain their beauty when protected from varying weather conditions. Any glass provided with this fan is not covered by the warranty.

Any replacement of defective parts for the ceiling fan must be reported within the first year from the date of purchase. For the balance of the warranty, call our customer service department (at **1-800-527-1292**) for return authorization and shipping instructions so that we may repair or replace the ceiling fan. Any fan or parts returned improperly packaged is/are the sole responsibility of the purchaser. There is no further express warranty. Litex Industries disclaims any and all implied warranties. The duration of any implied warranty which cannot be disclaimed is limited to the limited lifetime period as specified in our warranty. Litex Industries shall not be liable for incidental, consequential or special damages arising at or in connection with product use or performance except as may otherwise be accorded by law. This warranty gives you specific legal rights and you may also have other rights which vary from state to state. This warranty supersedes all prior warranties.

REPLACEMENT PARTS LIST

For replacement parts, call our customer service department at **1-800-527-1292**, 8:30 a.m. - 5:00 p.m., CST, Monday - Friday. When ordering parts, please have the Model # or Item # of the fan available, which can be found on page 1.

PART	DESCRIPTION
A	Motor Housing
B	Mounting Bracket
C	Plastic Lock Tab
E	Light Kit Fitter
F	Glass Shade
G	Blade Arm
H	Blade
J	Pull Chain Extension
K	Socket Ring
L	Extra Switch Housing
N	Motor Housing Mounting Screw
O	Motor Screw
P	5.4M/M Lock Washer
AA	Blade Screw
BB	Fiber Blade Washer
CC	E3 Wire Connector



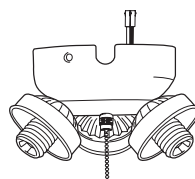
A



B



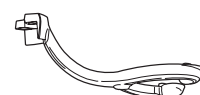
C



E



F



G



H



J



K



L



N



O



P



AA



BB



CC