

# Assembly and Operating Instructions

3042650, 3039632R

## Steel Frame Walk Behind Broadcast Spreader

### ASSEMBLY

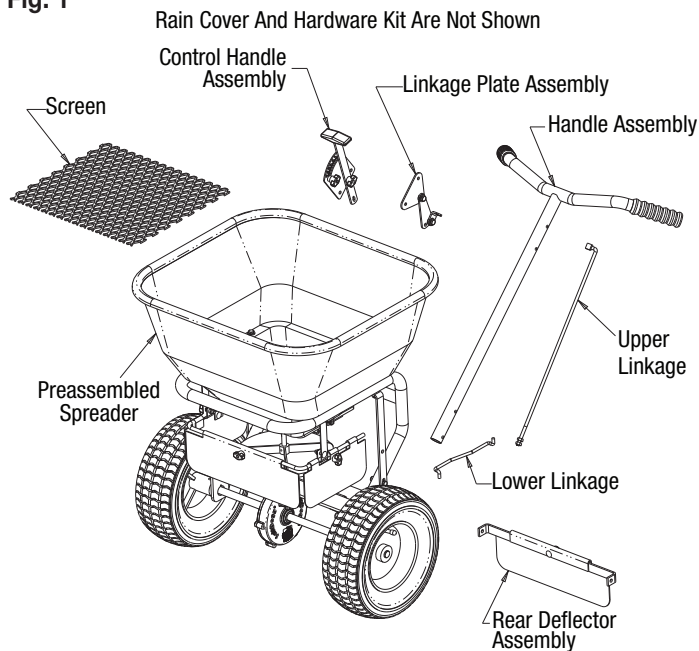
#### Tools Needed for Assembly

- (2) 10mm Wrenches
- (2) 1/2 in Wrenches

#### Contents of Box – Figure 1

Remove and check contents of box against the parts list to make sure all components are included. When ordering replacement parts, refer to the parts list for part numbers.

Fig. 1



#### Attaching the Handle Assembly / Control Plate Assembly – Figures 2 & 3

1. Carefully cut the cable ties to detach the Handle Assembly from the Hopper Assembly. Remove the Handle Assembly and Hopper Assembly from the box.
2. Place the pre-assembled Hopper Assembly upright on its wheels on the ground
3. The Control Plate Assembly will be attached to the lower Hopper Assembly with partially tightened M6 Bolts and Nuts. Remove the nuts and bolts that are holding the Control Plate Assembly and carefully slide the Handle Assembly onto the tube on the Hopper Assembly. Without losing the orientation of the



Control Plate Assembly, attach the Control Plate Assembly and the tube to the Hopper Assembly using the same M5 Bolts and Nuts that you just removed. Tighten securely.

Fig. 2

Attach Control Plate Assembly To Frame Using M6x40 Bolts

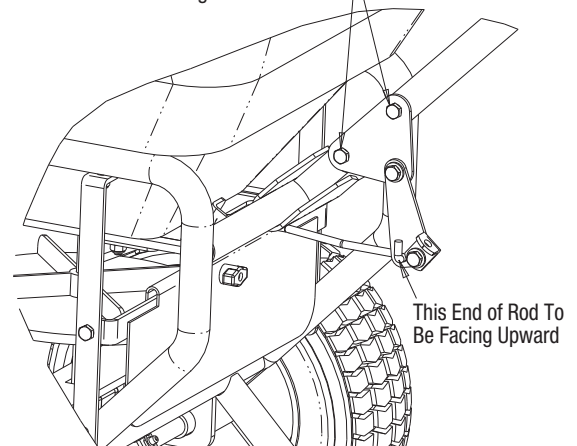
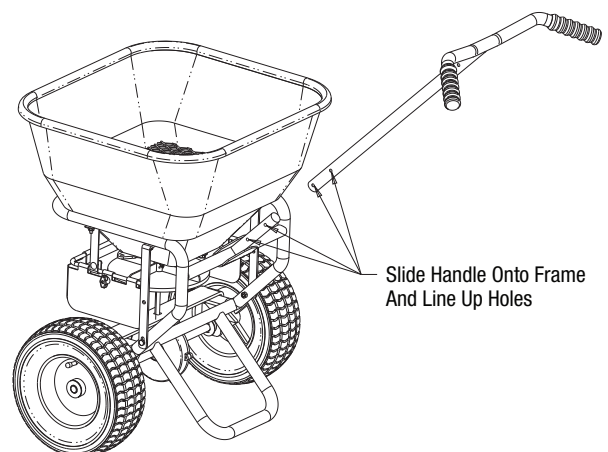


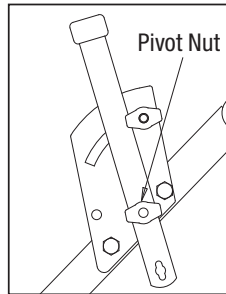
Fig. 3



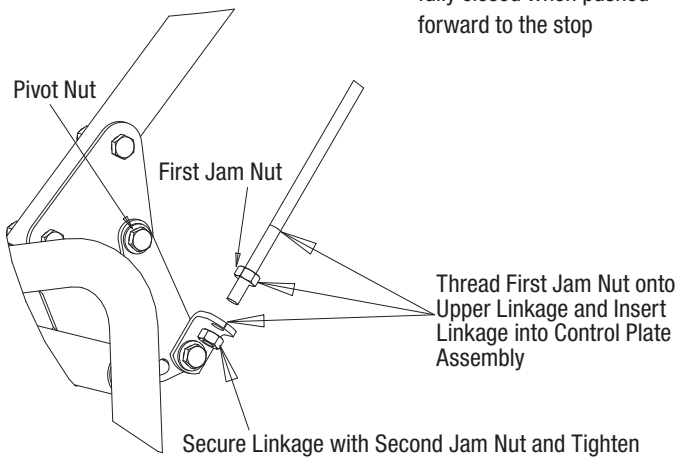
**Attach Upper Linkage – Figure 4**

1. Thread one Jam Nut fully onto the Upper Linkage Rod. While the Restrictor Plate underneath the Hopper is fully closed, insert the threaded end of the Upper Linkage Rod into the hole in the bracket Linkage Plate Assembly. Tighten the two jam nuts so that when the Control Handle is all the way rearward the restrictor plate in the hopper is fully open.
2. Verify that the Restrictor Plate may be fully closed by pushing the Control Handle forward. If the control lever is too tight or too free to move, tighten or loosen the two Linkage Pivot Nuts (Fig 4)

Fig. 4



Verify the Restrictor Plate is fully closed when pushed forward to the stop



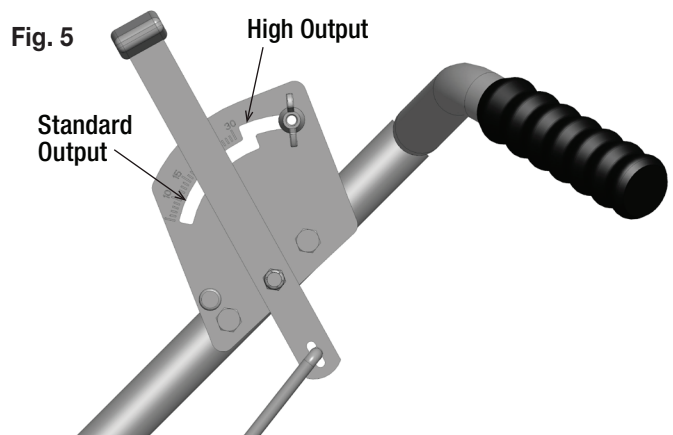
**Final Assembly**

1. **Check And Tighten All Fasteners** – Make sure the Gearbox turns freely when pushing and pulling the unit.
2. Insert agitator pin into the gearbox shaft inside of spreader hopper.
3. Place the Screen in the hopper.
4. Install the Rain Cover on the hopper.

**OPERATION**

**Standard/High Flow Operation - Figure 5**

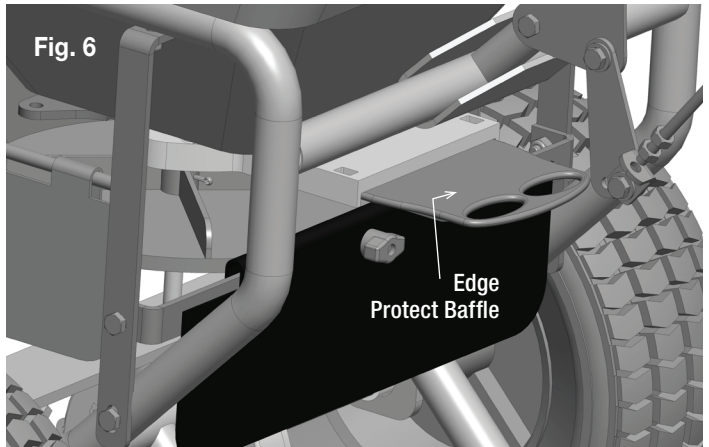
1. The Restrictor Plate on the Control Handle Assembly has two ranges of adjustment. See figure 8.
  - **Standard Range** - Positions 0 thru 30 offer fine control and are most typically used with fertilizer and seed type material.
  - **High Flow Range** - Typically used for spreading salt or ice melt and allow for maximum material distribution



**Edge Protect™ Feature - Figure 6**

The Edge Protect Feature directs all material to the right side from the spreader for use around the perimeter of the area being spread to prevent material from being spread on your landscape beds, driveway, or sidewalk.

- **To activate Edge Protect™** - push the Edge Protect™ gate all the way in.
- **For normal operation** - pull the Edge Protect™ gate out fully.



**Setting the Spreader Up to begin Spreading Material**

1. Before filling Hopper, ensure that the Restrictor Plate is fully closed and the screen is in place.
  2. Move and tighten the Control Handle Assembly Stop Bolt to the desired setting. The material to be spread will typically have spreader settings shown on the bag. Use the reference table to determine your approximate setting for you GroundsKeeper spreader.
- NOTE:** These values are for reference only. For critical applications, be certain to calibrate your spreader with the material being used prior to application.
3. Set the Edge Protect™ Gate to the desired setting.
  4. Begin moving forward with the spreader.
  5. Pull the Control Handle rearward to the stop bolt to open Restrictor Plate and allow material to flow.
  6. Before stopping, push the Control Handle forward to stop the material flow.

Values shown are for reference only and actual material spread will vary with environmental conditions and material size. Always calibrate your spreader with the material being used prior to application to ensure correct distribution. Conversions below are based on free flowing SG240 material.

### Push Spreader Application Conversion Reference Table

GROUNDSCKEEPER	EATHWAY® ROTARY	LESCO®	CHAPIN®	SCOTT'S® R8A/SR1	SCOTT'S® SPEEDYGREEN and SCOTT'S® EDGEGUARD	SCOTT'S® ACCUGREEN	SPYKER®
10	12	10	11		2		
11	13	11	12	H+1/2	3		3
12	13.25	12	13	1	4	6.5	3.25
13	13.75	13	14	1 1/2	5	7	3.5
14	14.5	14	15	J	5	7.5	4
15	15.5	15	16	J 1/2	6	8	4.25
16	16.75	16	16	K	6	8.5	4.25
17	17.75	17	17	KI/2	6.5	9	4.5
18	18.25	18	18	L	7	9.5	4.75
19	18.75	19	19	L 1/2	7.5	10	4.75
20	20	20	20	M	8		5

### Maintenance

1. The Hopper and Spinner should be completely emptied and cleaned before storage.
2. The Spreader should be washed and dried before storage.
3. Check that the Restrictor Plate and Linkage move freely. Clear out any debris between the Restrictor Plate & the Hopper.
4. Check that the gearbox moves freely.
5. Check torque of all fasteners on a monthly basis.

### Operation Notes

1. The spreader is designed to be operated at a brisk walking pace (approx. 3mph). Walking slower or faster will alter the distribution pattern & amount of the material, as will the moisture content of the material & other environmental factors.
2. Grease should be applied to the gear box during seasonal use and prior to storing for the season.

### IMPORTANT

When filling hopper, make certain there are no large objects within the material. Objects larger than the openings in the Screen may cause the spreader to clog or even damage the drive system. Never leave material in the hopper when not in use.

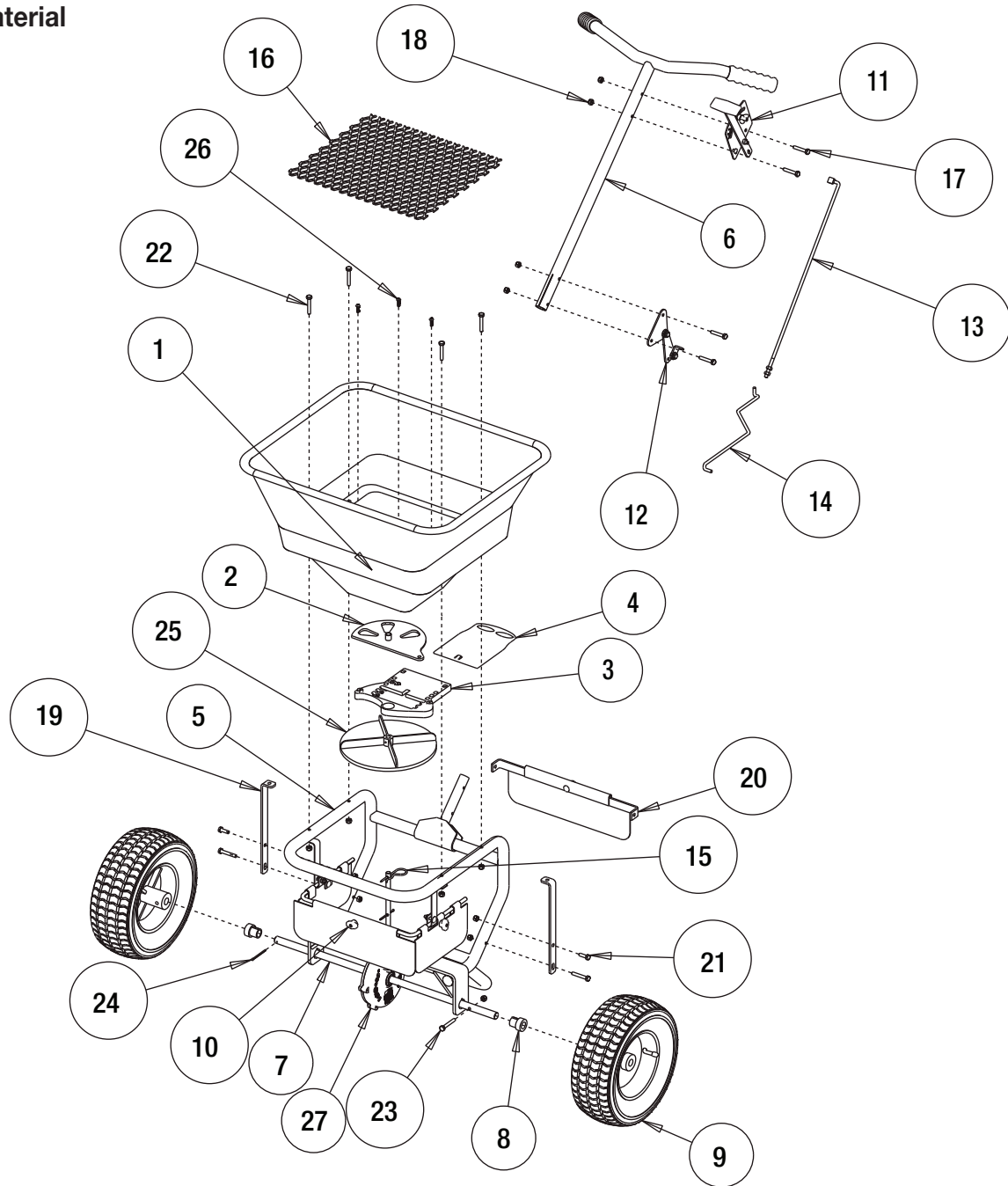
### FULL ONE YEAR WARRANTY

Manufacturer will repair, or at manufacturer's discretion will replace any part of this salt spreader which proves to be defective in workmanship or material under normal use for a period of one year from the date of delivery to the original purchaser. Any cost incurred in returning the product to the supplier is the responsibility of the consumer.

### EXCLUSIONS

Manufacturer shall not be liable for special, incidental, or consequential damages, or for damages resulting from lack of necessary maintenance, from misuse, abuse, acts of God, or alteration of the product. Some states do not allow the exclusion or limitation of incidental or consequential damages, so the above limitation or exclusion may not apply to you.

**Bills Of Material**



**Parts List**

ITEM	PART NUMBER	QTY	DESCRIPTION
1	3042705	1	HOPPER, SPREADER, WB, GROUNDKEEPER
2	3012697	1	GATE,RESTR 1 CTOR,WB
3	3056768	1	GATE, MOUNT, SPREADER
4	3056795	1	GATE, FLOW, SPREADER
5	3057817	1	FRAME, WELDMENT, WB
6	3057818	1	HANDLE, SPREADER, WB, BLACK
7	3057820	1	AXLE, SPREADER, WB ZINC
8	3012704	2	BUSHING, AXLE, WALK BEHIND
9	3014857	2	WHEEL, WALK BEHIND, SALTDogg LOGO
10	3057821	1	DEFLECTOR, ASSEMBLY, WB
11	3056251	1	HANDLE,SLOTTED CONTROL,ASSEMBLY
12	3010878	1	PLATE, ASSEMBLY, LINKAGE
13	3010880	1	ROD, CONTROL, UPPER WB
14	3010879	1	ROD, CONTROL, LOWER WB

ITEM	PART NUMBER	QTY	DESCRIPTION
15	3007873	1	PIN, HAIR COTTER 5/32" ZN 3.25 OAL
16	3008813	1	SCREEN, HOPPER, WALK BEHIND
17	3012708	5	SCREW, HEX HD CAP, M6X35, SST
18	3008123	14	NUT, HEX, NYLOCK M6 SST
19	3057819	2	BRACKET, SUPPORT, WB FRAME
20	3011734	1	DEFLECTOR, ASSEMBLY, REAR
21	3009368	2	SCREW,HEX HD CAP, M6X20, SST
22	3008116	6	SCREW,HEX HD CAP, M6X40, SST
23	3008117	1	SCREW,HEX HD CAP, M6X45, SST
24	3007875	2	PIN, COTTER, WB/IB SST
25	3012696	1	SPINNER,WALK BEHIND
26	3057669	3	SCREW, #1 2X5/8LG, HI-LO, PAN PHILLIPS
27	3027118	1	GEARBOX
28	3007993	1	RAIN COVER