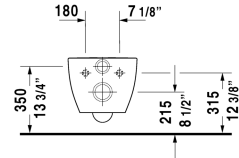
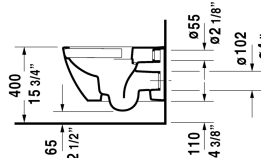
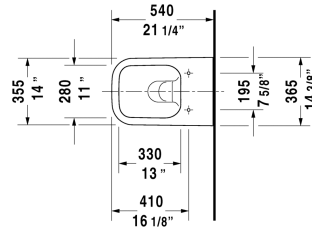


Happy D.2 Toilet wall-mounted Duravit Rimless® &

222209..92 / 222209..92 / 222209..92

| < 14 3/8" Inch > |



Toilet wall-mounted Duravit Rimless®	Dimension	Weight	Order number
rimless, washdown model, Durafix included, cUPC® listed*, WaterSense® listed			
Colors			
00 White 20 HygieneGlaze (an antibacterial ceramic glaze that provides almost indefinite effectiveness) 89 Anthracite/Anthracite Matte			
Variant			
♣ inside color White, outside color White, 1.6/0.8 gpf	14 3/8" x 21 1/4" Inch	59.1 lb	222209..92
♣ inside color White with HygieneGlaze, outside color White, 1.6/0.8 gpf	14 3/8" x 21 1/4" Inch	59.1 lb	222209..92
♣ inside color Anthracite, outside color Anthracite Matte, 1.6/0.8 gpf	14 3/8" x 21 1/4" Inch	59.1 lb	222209..92
Infobox			
* Complies with following standards: ASME A112.19.2/CSA B45.1 and ASME A112.19.14, Durafix for concealed installation is included, Wall-mounted toilet is ADA compliant, when installed with a seat height of 17" - 19" from the finished floor, In-wall tank & carrier and actuator plate required for installation			
Accessory for ceramics			
Toilet seat and cover removable, hinges stainless steel, with slow close		6 lb	006459
Toilet seat and cover removable, hinges stainless steel, without slow close		6 lb	006451
Noise reduction gasket			Schallschutz-Set 005090
Actuator plate A1, for toilet, plastic mechanical actuation, for surface mounted installation, dual flush, mounting frame, mounting hardware included, push rods, front plate plastic	8 1/2" x 5 3/4" Inch	0.7 lb	WD5008

Happy D.2 Toilet wall-mounted Duravit Rimless® # 222209..92 / 222209..92 / 222209..92

|< 14 3/8" Inch >|

<p>Toilet in-wall tank & carrier, Standard WaterSense® listed, For 2"x4" and 2"x6" wall installation, for toilets with a projection of <= 24 5/8", adjustable feet 0" - 9 1/2", SensoWash ready, mechanical front flush actuation, includes in-wall tank, marking of filling height, dual flush, insulated against condensation, Scope of delivery, HDPE wall-mounted toilet connection bend DN 90/90, PE wall-mounted toilet connection set DN 90, wall-mounted mounting rods M12, mounting hardware included, 2 bolt caps, cUPC® listed*, Load capacity = 880 lbs</p>	<p>23 1/4" x 45 1/4" Inch 35.3 lb</p>	<p>WD1022</p>

All drawings contain the necessary measurements which are subject to standard tolerances. They are stated in inch & mm and are non-binding. Exact measurements, in particular for customized installation scenarios, can only be taken from the finished ceramic piece.