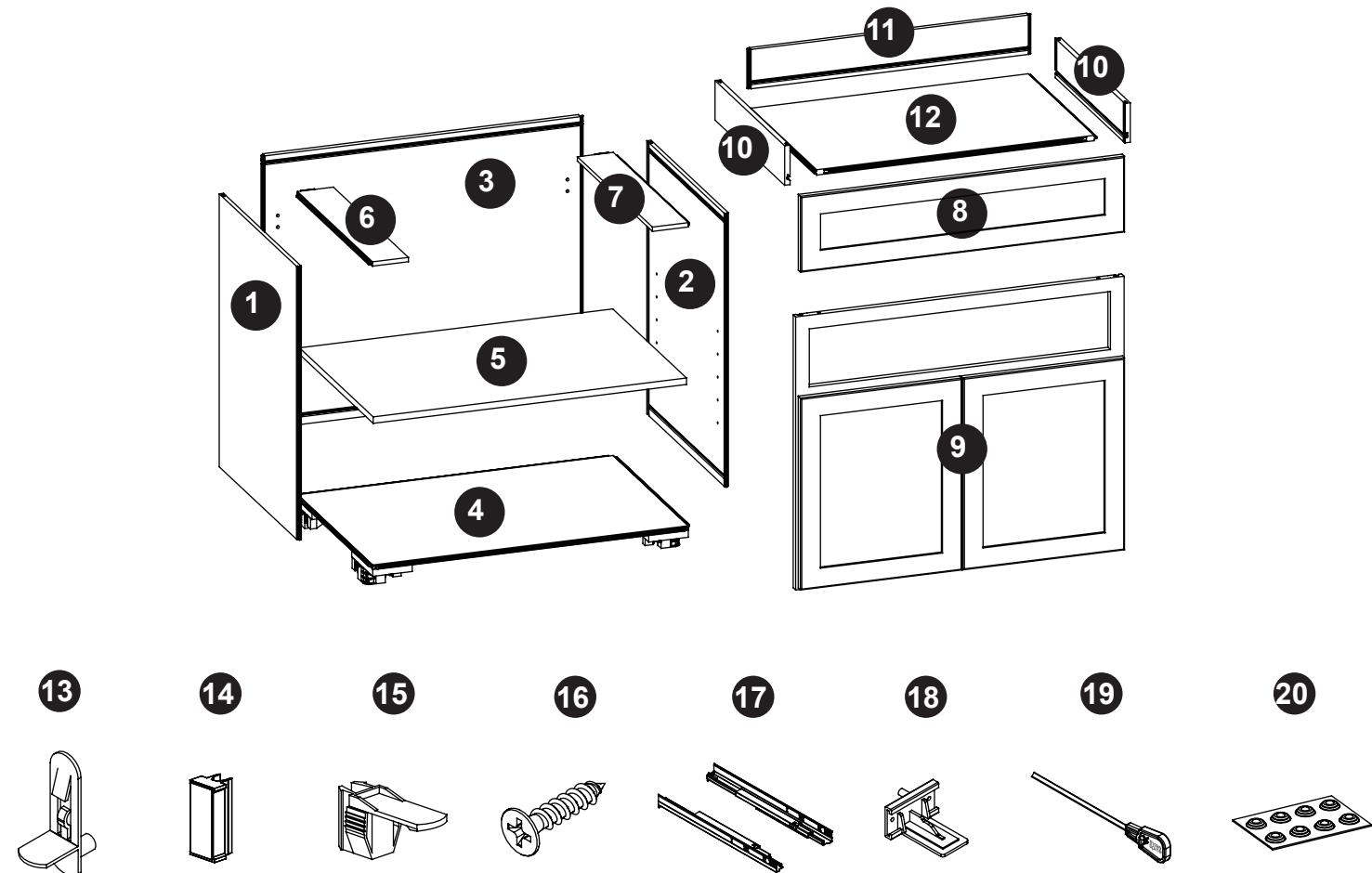


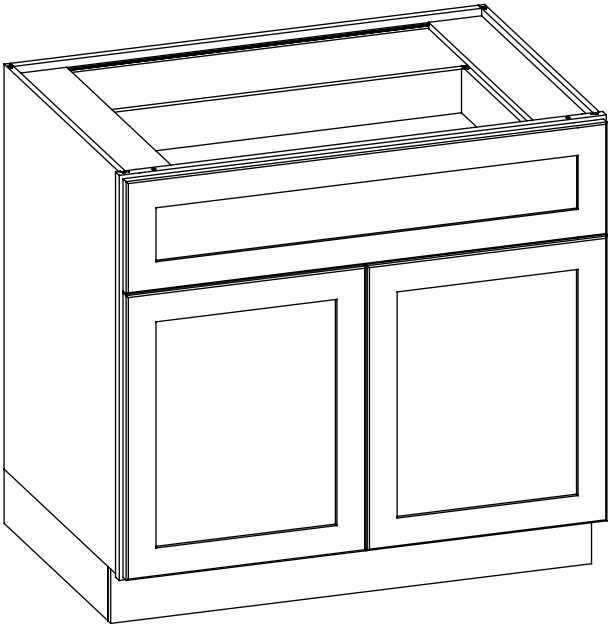
REPLACEMENT PARTS LIST

For replacement parts, call our customer service department at 866-439-9800, 8 a.m. - 8 p.m., EST, Monday - Sunday. You could also contact us at partsplus@lowes.com.

PART	DESCRIPTION	PART#	PART	DESCRIPTION	PART#
1	Left panel	00LWSCCLICK-10/11/12-01	13	Shelf Support	00LWSCCLICK-SS
2	Right panel	00LWSCCLICK-10/11/12-02	14	Toe Kick Side clasp	00LWSCCLICK-TS
3	Back panel	00LWSCCLICK-10/11/12-03	15	Toe Kick Front clasp	00LWSCCLICK-TF
4	Bottom panel	00LWSCCLICK-10/11/12-04	16	M3.5 x 16 mm Screw	00LWSCCLICK-16MS
5	Adjustable shelf	00LWSCCLICK-10/11/12-05	17	Drawer Slides	00LWSCCLICK-SC
6	Top left rail	00LWSCCLICK-10/11/12-06	18	Slide support	00LWSCCLICK-SST
7	Top right rail	00LWSCCLICK-10/11/12-07	19	Dismantling pin	00LWSCCLICK-DP
8	Drawer Front	00LWSCCLICK-10/11/12-08	20	Silicon pads	00LWSCCLICK-SP
9	Door frame	00LWSCCLICK-10/11/12-09			
10	Drawer side panel	00LWSCCLICK-10/11/12-10			
11	Drawer back panel	00LWSCCLICK-10/11/12-11			
12	Drawer bottom panel	00LWSCCLICK-10/11/12-12			



welcoming • sophisticated • inspiring



BILT. INTELLIGENT INSTRUCTIONS



Scan the QR code for online assembly instruction video.



Available on most iOS and Android devices

DOWNLOAD THE **FREE** APP



Threespine® is a patented technology invented by Valinge Innovation AB. The Threespine® word mark and logo are registered trademarks for click furniture technology owned by Valinge Innovation AB and any use of such marks is under license.

ITEM # 5683055, 5683053, 5683054
**Two Door One Drawer
Base Cabinet**

MODEL # LWSCCLICK-10
LWSCCLICK-11
LWSCCLICK-12

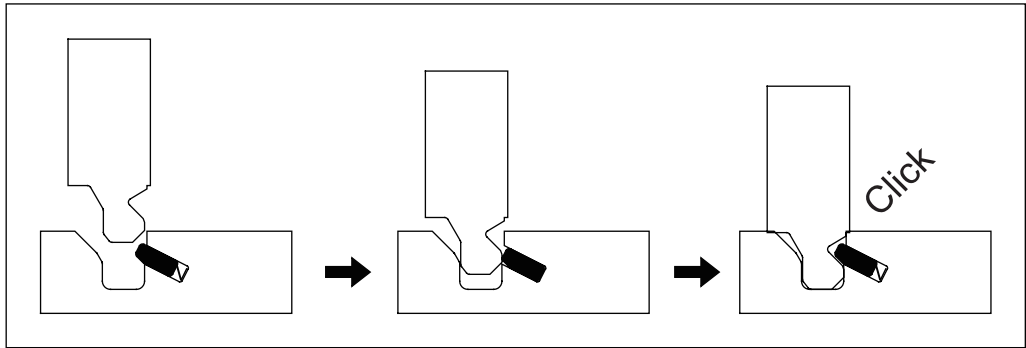
ATTACH YOUR RECEIPT HERE

Serial Number _____ Purchase Date _____



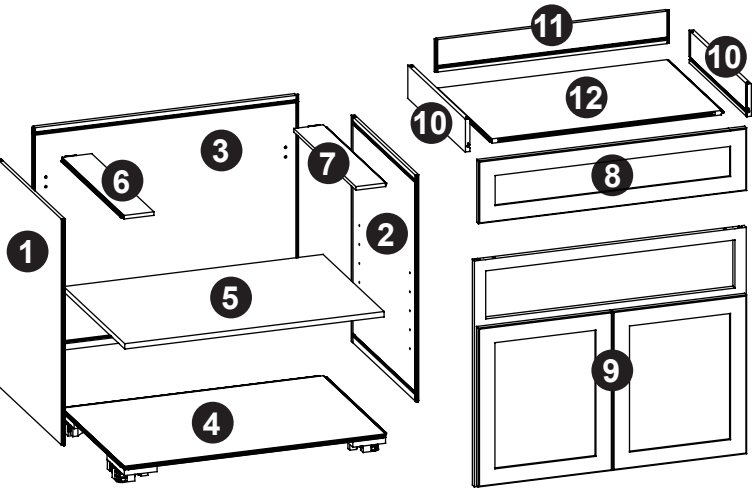
Please call for replacement parts or assistance: 1-866-942-5362
Pacific Standard Time: 8:30 am – 4:30 pm PST Monday to Friday
Or visit our web site: www.whalenfurniture.com

HOW CLICK-IT WORKS



- Key Feature of Click-IT Powered by Threespine
- Patented flexible insert
 - Groove on the opposite panel
 - Tool-Less Click-IT in place
 - Achieve full joint connection

PACKAGE CONTENTS



PART	DESCRIPTION	QUANTITY
1	Left panel	1
2	Right panel	1
3	Back panel	1
4	Bottom panel	1
5	Adjustable shelf	1
6	Top left rail	1
7	Top right rail	1
8	Drawer Front	1
9	Door frame	1
10	Drawer side panel	2
11	Drawer back panel	1
12	Drawer bottom panel	1

HARDWARE CONTENTS

13



Shelf Support
Qty. 4

14



Toe Kick
Side clasp
Qty. 4

15



Toe Kick
Front clasp
Qty. 2

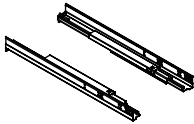
16



M3.5 x 16mm
Screw
Qty. 8

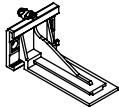
HARDWARE CONTENTS

17



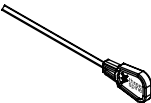
Drawer Slides
Set. 1

18




Slide support
Qty. 2

19



Dismantling pin
Qty. 8

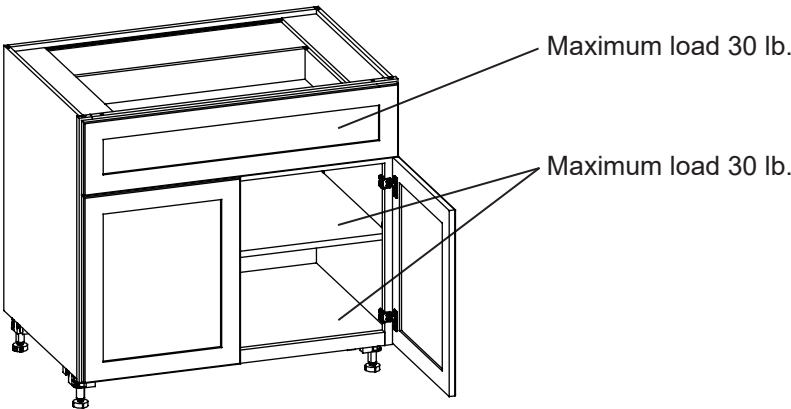
20



Silicon pads
Qty. 8

! SAFETY INFORMATION

- Please read and understand this entire manual before attempting to assemble, operate or install the product.
- Do not allow children to climb or play in or around this product.
 - Use this unit for its intended purpose only. Do not use shelves as step ladder.
 - To avoid damage, assemble the product on a sturdy, level and protective surface.
 - Do not push furniture, especially on carpeted floor. Have someone help you lift the item and place it in its new location. Remove any shelves before moving.



! WARNING

UNIT IS INTENDED FOR USE ONLY WITH MAXIMUM WEIGHTS INDICATED. OVERLOADING STORAGE UNIT WITH PRODUCTS HEAVIER THAN MAXIMUM WEIGHT MAY RESULT IN INJURY. DISTRIBUTE ANY WEIGHT IN UNITS EVENLY.

PREPARATION

Please read the instruction sheets completely before assembly. Examine all packaging material before discarding carton. Remove any remaining staples from the carton before discarding. Remove all parts from carton and separate into groups as indicated on part list. Please ensure all parts are included prior to assembly.

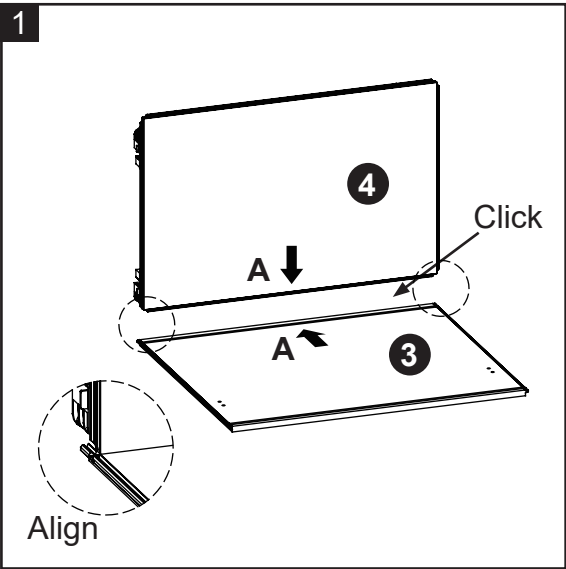
Tools Required for Assembly: Phillips screwdriver.

ASSEMBLY INSTRUCTIONS

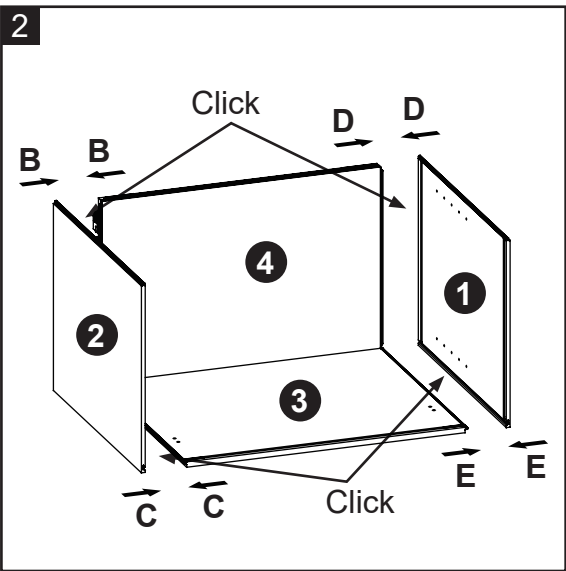
- 1a. Find Back panel (3) and Bottom panel (4).
- 1b. Match up “A” label on Back panel (3) with “A” label on Bottom panel (4) and click together. Make sure the connection is flush across the entire joint and there are no gaps between the two panels.

Assembly Tip – Make sure edges are aligned before clicking together.

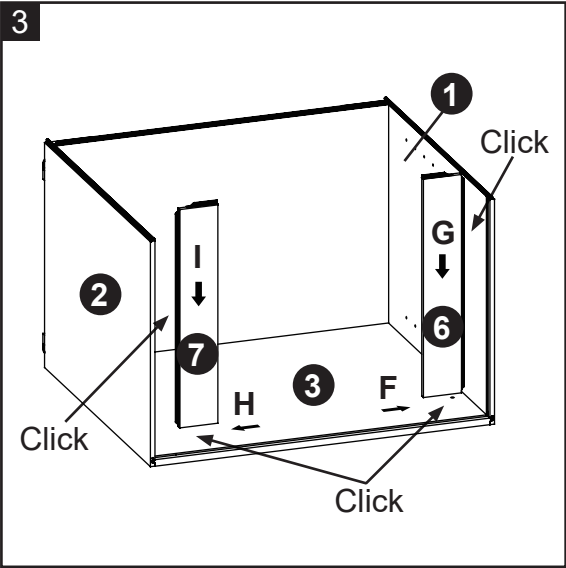
Assembly Tip – To attach side panels you may find it easier to flip the cabinet on its side(s). Be careful not to damage or scratch the finished sides.



- 2a. Find Left panel (1) and Right panel (2).
- 2b. Match up “D” label on Left panel (1) with “D” label on Bottom panel (4), “E” label on Left panel (1) with “E” label on Back panel (3) and click together. Make sure there are no gaps between the three panels.
- 2c. Match up “B” label on Right panel (2) with “B” label on Bottom panel (4), “C” label on Right panel (2) with “C” label on Back panel (3) and click together. Make sure there are no gaps between the three panels.

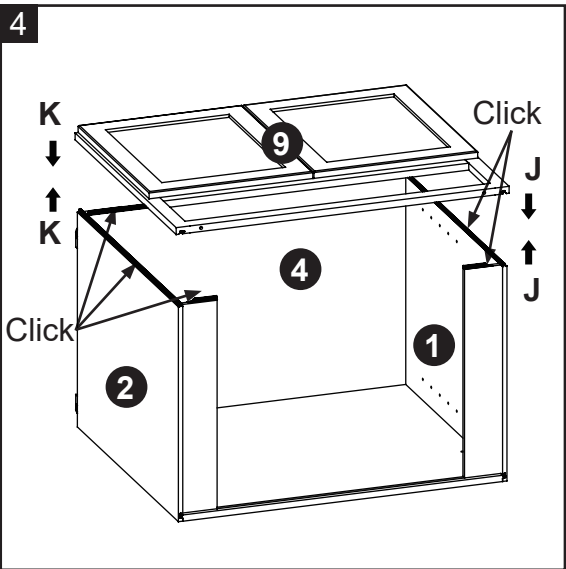


- 3a. Find Top left rail (6) and Top right rail (7).
- 3b. Match up “F” label on Top left rail (6) with “F” label on Left panel (1), “G” label on Top left rail (6) with “G” label on Back panel (3) and click together. Make sure there are no gaps between the three panels.
- 3c. Match up “H” label on Top right rail (7) with “F” label on Right panel (2), “I” label on Top right rail (7) with “I” label on Back panel (3) and click together. Make sure there are no gaps between the three panels.

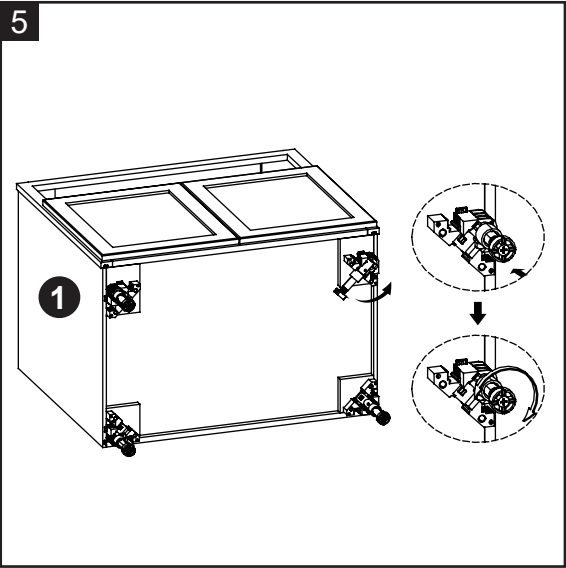


ASSEMBLY INSTRUCTIONS

- 4a. Find Door frame (9).
- 4b. Match up “J” label on Left panel (1) with “J” label on Door frame (9), “K” label on Right panel (2) with “K” label on Door frame (9) and click together. Make sure there are no gaps on all four connection sides.

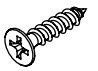




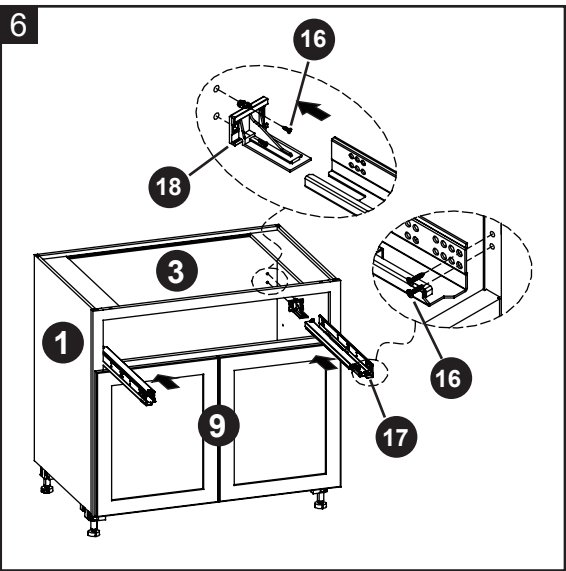
- 5. Lift the legs in the direction of the arrow, then press to secure, rotate to adjust to the desired height.



- 6. Attach the Slide support (18) to the Back panel (3), using M3.5x16mm Screws (16); Then attach the Drawer Slides (17) and insert it into the mount, lock the Drawer Slides (17) to Front frame (9) with using M3.5x16mm Screws (16).

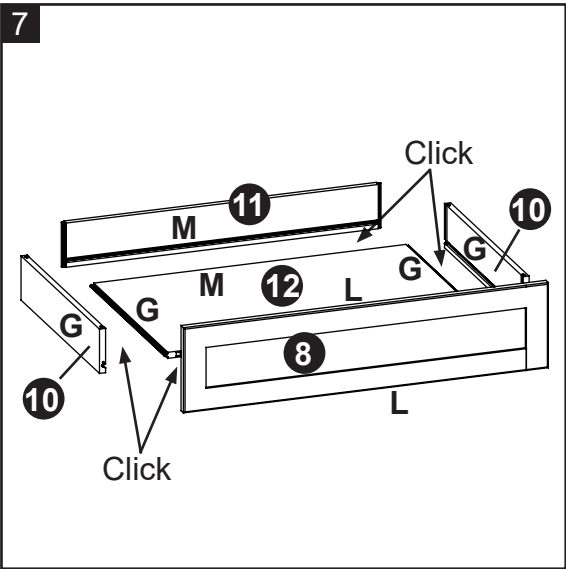
Hardware Used

16	M3.5x16mm Screw		x 8
17	Drawer Slides		x 1
18	Slide support		x 2



ASSEMBLY INSTRUCTIONS

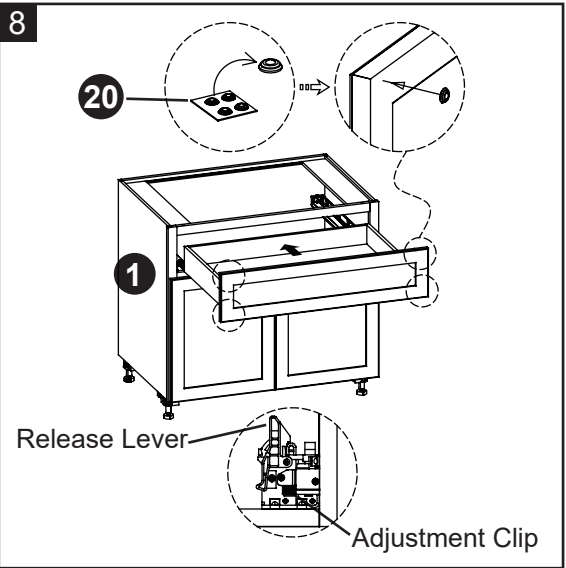
- 7a. Find Drawer Front (8), Drawer side panel (10), Drawer back panel (11) and Drawer bottom panel (12).
- 7b. Match up “L” label on Drawer bottom panel (12) with “L” label on Drawer Front (8) , “M” label on Drawer bottom panel (12) with “M” label on Drawer back panel (11) and click together. Make sure there are no gaps between the three panels.
- 7c. Match up “G” label on Drawer bottom panel (12) with “G” label on Drawer side panel (10) and click together. Make sure there are no gaps between the three panels.



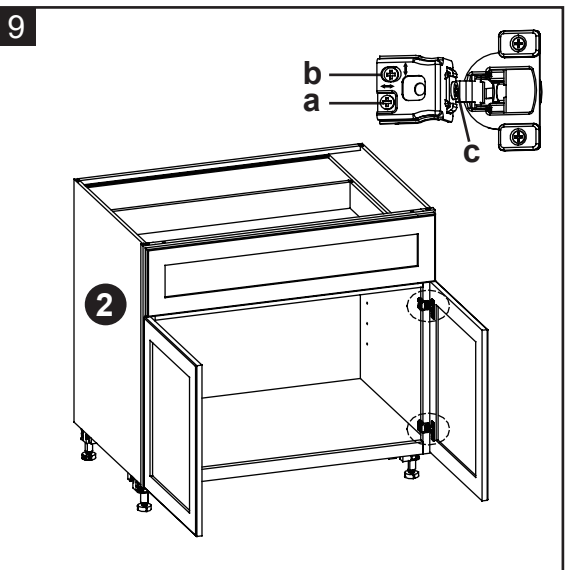
8. Peel and stick four silicone pads (20) onto the inside corners of each drawer, Then attach the drawer box to the base cabinet.
- Note:**
- 1. If you need to remove the drawer, please press the Release Levers on the mechanisms pre-attached underneath the drawer kit at both ends.
 - 2. If necessary, you can push the Adjustment Clips on the bottom mechanisms to adjust the top and bottom gaps of the drawer.

Hardware Used

- 20 Silicon pads x 4



9. In & Out Adjustment: Turn screw (a) clockwise or counterclockwise.
Up & Down Adjustment: Turn screw (b) clockwise or counterclockwise.
Left & Right Adjustment: Turn screw (c) clockwise or counterclockwise.

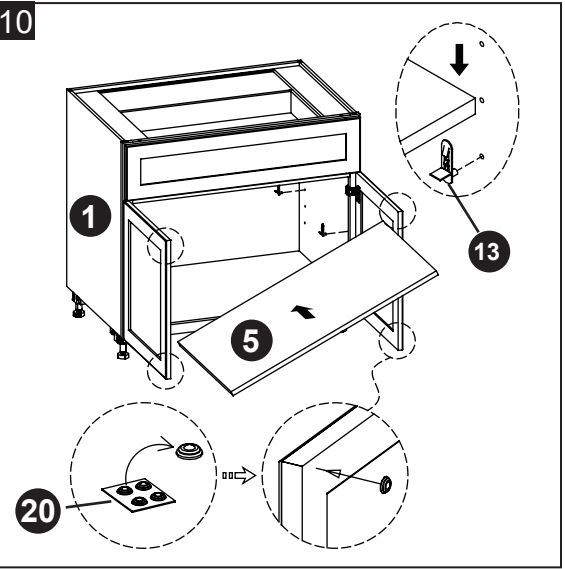


ASSEMBLY INSTRUCTIONS

- 10a. Insert shelf supports (13) into the desired holes inside each side compartment. Make sure you place the four shelf supports at the same level to level the shelf, then put in the adjustable shelf (5). To remove the shelves, push the tabs on the shelf supports and lift the shelf.
- 10b. Peel and stick four silicone pads (20) onto the inside corners of each door.

Hardware Used

- 13 Shelf Support x 4
- 20 Silicon pads x 4

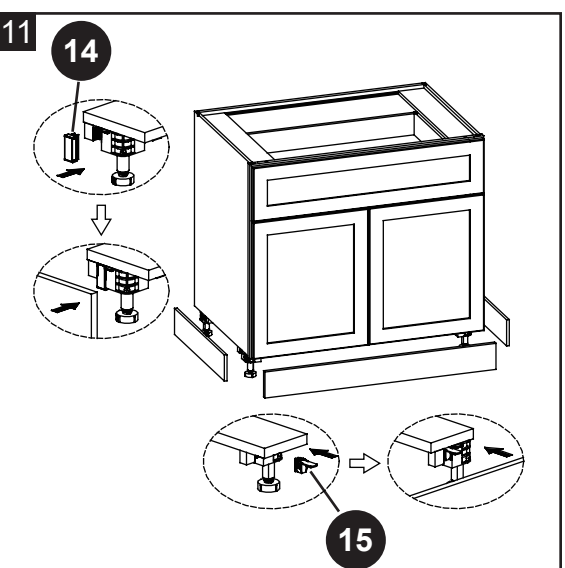


- 11a. Install Front clasp (15) in front of the base cabinet leg, then install the appropriate length size of the Toe Kick and press down the clasp to secure the Toe Kick.
- 11b. Install Side clasp (14) in side of the base cabinet leg, remove the protective film from 3M adhesive paper on the side clasp, then attach the appropriate length size of the Toe Kick to the clasp, press to make sure it sticks firmly.

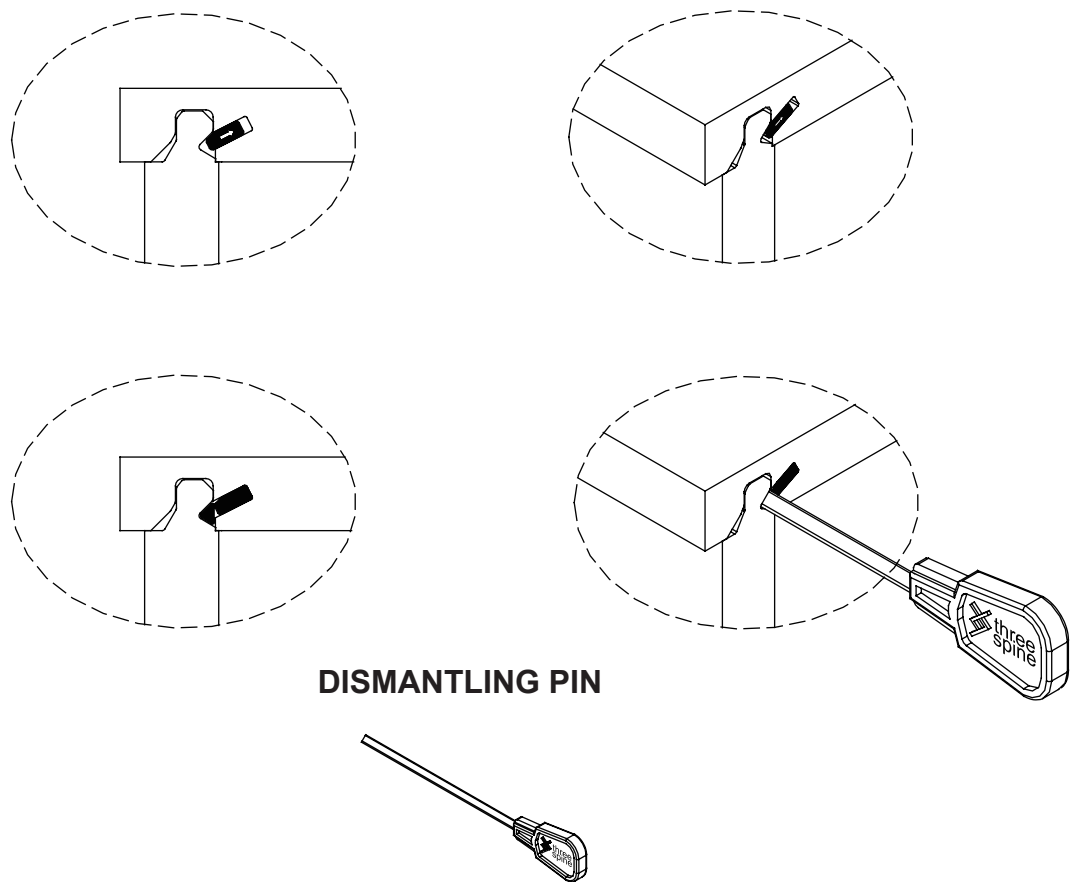
NOTE: Toe Kick need to be purchased separately.

Hardware Used

- 14 Side clasp x 4
- 15 Front clasp x 2

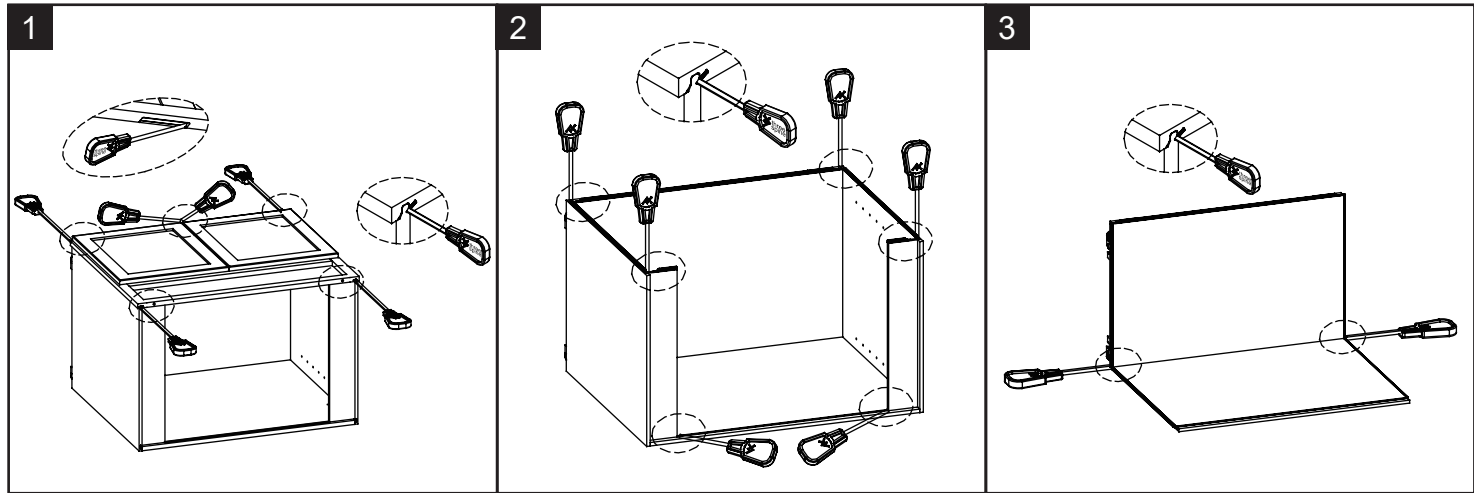


DISASSEMBLING



DISMANTLING PIN

1. Insert the dismantling pin into the triangle hole.
2. The dismantling pin needs to be fully inserted.
3. You will need more than 1 for some panels.
4. It is important that dismantling pins in the sides meet each other so that you are sure the frame is fully unlocked.



CARE AND MAINTENANCE

- To clean and care for your furniture:
- Use a soft, clean cloth that will not scratch the surface when dusting.
 - Use of furniture polishes is not necessary. Should you choose to use polishes, test first in an inconspicuous area.
 - Using solvents of any kind on your furniture may damage the finish.
 - Never use water to clean your furniture as it may cause damage to the finish.
 - Liquid spills should be removed immediately. Using a soft clean cloth, blot the spill gently. Avoid rubbing.
 - Stains or marks from crayons or ink markers will be difficult to remove.
 - In the event that your furniture is stained or otherwise damaged during use, we recommend that you call a professional to repair your furniture.

CARING FOR WOOD FURNITURE

- It is best to keep your furniture in a climate-controlled environment. Extreme temperature and humidity changes can cause fading, warping, shrinking and splitting of wood. It is advised to keep furniture away from direct sunlight as sun may damage the finish.
- Proper care and cleaning at home will extend the life of your purchase. Following these important and helpful tips will enhance your furniture as it ages.

ONE-YEAR LIMITED WARRANTY

This product is warranted to the original purchaser. If there is a failure in this unit due to defects in materials or workmanship, the manufacturer will repair or replace this item at our discretion without charge. Warranty is void if product has been assembled incorrectly, misused, abused by overloading, altered in any way or damaged due to accident. This warranty is not transferable and does not cover chipping, flaking, scratches, rust, dents, or other damages to the surfaces of this product. Responsibility of the manufacturer is limited to repair or replacement of this product. The manufacturer is not responsible for consequential, incidental, or other damages or losses resulting from product failure.

This warranty is in lieu of all other expressed warranties. Some states do not allow the exclusion or limitation of incidental or consequential damages, so the above limitation may not apply to you. This warranty gives you specific legal rights and you may have other rights which vary from state to state.