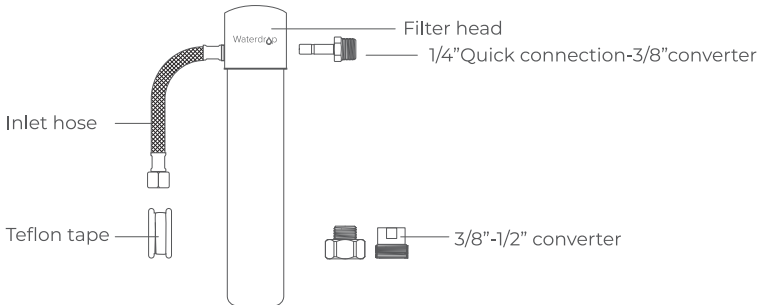


Waterdrøp

Direct Connect Undersink Water Filtration System  
WD-10UB-MZ system | Installation Instructions



System certified by IAPMO R&T against NSF/ANSI Standards 42 for the reduction of the claims specified on the Performance Data Sheet, and to NSF/ANSI 372 (≤0.25% lead).



Specifications

Operating temperature	2-38°C/35-100°F
Working pressure	10-100psi (0.7-6.8bar)
Flow rate	0.75gpm (2.83lpm)
Filter capacity	WD-RF10/WD-RF10-UF/MZ/AK: up to 11,000 gallons
	WD-RF15/WD-RF15-UF/MZ/AK: up to 19,000 gallons
	WD-RF17/WD-RF17-UF/MZ/AK: up to 24,000 gallons
Feed water requirement	Municipal tap water

NOTE:

- If using well water as the source, please make sure the feed water has been through a pre-filtration system, otherwise, large particles in well water will clog the filter easily and shorten filter life.
- The above form lists model numbers of only black filters. Please note that the white filter is different from the black filter only in color. They have the same filter material and filtration capacity.
- Actual filter life varies according to local water quality.

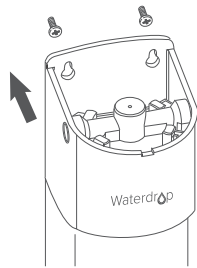
Precautions

- Do not use it with water that's microbiologically unsafe or of unknown quality without adequate disinfection.
- For use only with cold water.
- Do not freeze the filter, as this can cause cracking and water leakage.
- Do not allow children under 3 years old to have access to small parts during installation of this product.
- This installation must comply with all applicable state and local regulations.
- Turn off the water supply while replacing the filter.

Installation of the filter system

Step 1: Fix the filter head and the filter

- Paste the assistant label to finish drilling. (Note: Mount the water filter at least 2 inches higher than the ground for easier filter change.)
- Install the screw and reserve enough space to hang the filter.
- Hang the filter system on the screw.



Step 2: Connect the water supply (cold water only)

- Connect the inlet hose to the filter head. (Figure 1)
- Note: When the hose is tightly inserted, there will be a 1/8 inch gap between the hose and the filter head, which is designed for easy replacement and won't affect the sealing performance.
- Shut off the water supply. Remove the faucet hose. (Figure 2)

Figure 1

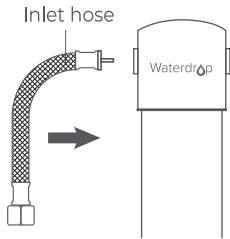
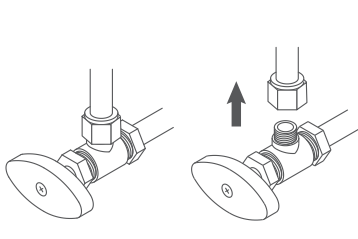


Figure 2



- Connect the inlet hose to the cold water valve.

- If the angle valve outlet is 3/8", it can be directly connected to the water supply. (Figure 3)
- If the angle valve outlet is 1/2", connect it with a No.1 converter at first. (Figure 4)

Figure 3

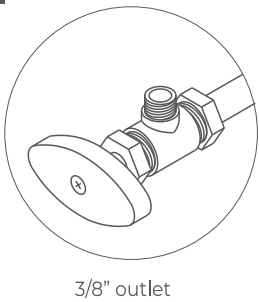
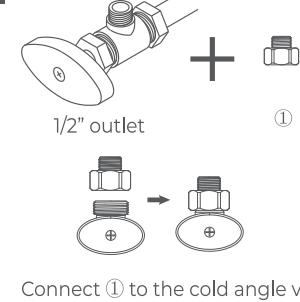


Figure 4



Step 3: Connect to the faucet

- If the faucet hose is 3/8", it can be directly connected to the 1/4" Quick connection-3/8" converter. (Figure 5)
- If the faucet hose is 1/2", connect it with a No.2 converter at first. (Figure 6)
- Connect the 1/4" Quick connection-3/8" converter to the filter head. (Figure 7)

Figure 5

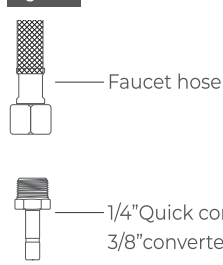


Figure 6

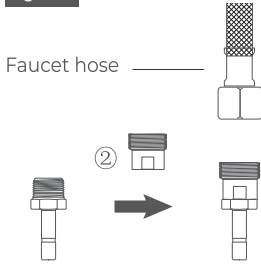
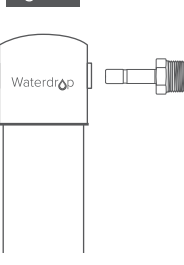


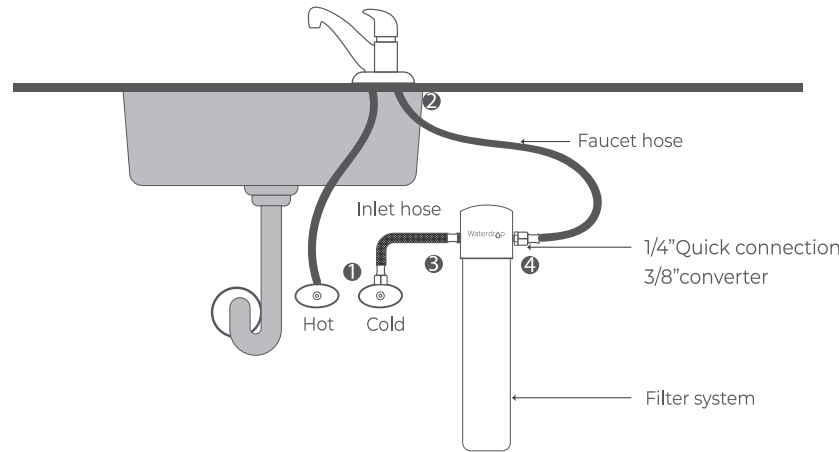
Figure 7



NOTE: If a female threaded connector is needed, please contact our service team for help.

Check the leaks and flush the filter

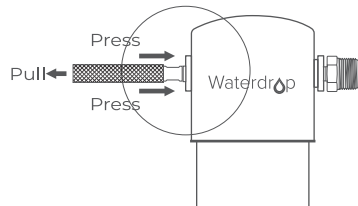
- If water leakage occurs, turn off the water supply. If the water leakage is occurring at position 1 and 2, wrap Teflon tape on the external thread. If the water leakage is occurring at position 3 or 4, insert the quick-connect fitting to the end and make sure the hoses hit the bottom of the fitting.
- Flush the filter for 5 minutes before use.



To disconnect

Use your thumb and index finger to press down on the lock sleeve. Use your other hand to pull out the hose from the fitting.

NOTE: Please do not pull out the tubing directly, or else it will damage the fitting and cause leakage.



140mm

210mm



图像颜色请依据数码稿印刷  
请不要擅自变更来稿件，如须修改，请联系伊可普做有关决定

印刷品技术要求 IMPORTANT PRINTING CAUTION

- 印刷要求 ☐覆光膜 ☐覆亚膜 ☐UV油 ☐吸塑油 ☐过油 ☐丝印
- 材质要求 80g双胶纸，双面印刷，风琴折
- 颜色要求 单黑印刷
- 版面要求 印刷品文字线条印迹清晰、无重影；印刷品套印准确无偏色、溢墨、指痕等；印刷品上光层均匀、光亮、牢固无粘连；覆膜表面平整、无褶皱、光泽度好；纸张材质正确，切边整齐、压线深浅适中、洁净、无斑点和条痕。

版式设计要求：

- 字体：标题为Myriad Pro SemiBold，内容为 Myriad Pro Regular；
- 标注尺寸为成品尺寸大小；
- 标注说明书长宽尺寸，单位mm。



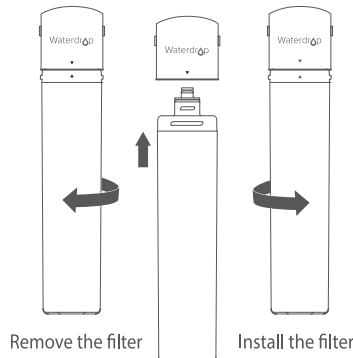
青岛伊可普电器有限公司包材设计图纸

品牌 BRAND NAME.	Waterdrop	工厂型号 ITEM NO.	8016/8017/8018通版
物料编码 INNER CODE.		版本号 VERSION.	V001
包材文件名称 FILE NAME.	WD-10U&15U&17U-UA-42-新转接头说明书-V001		
规格 MEASURE.	210*140mm	页数 PAGE.	6P
设计负责人 DWG.BY	张鑫龙	审核日期 VERIFY DATE.	

变更描述 DESCRIPTION.

Filter replacement

1. It's recommended to turn off the water supply and turn on the faucet to release the water pressure.
2. Rotate 1/4 turn to the left to remove the filter.
3. Take out the new filter and remove the protective cap.
4. Rotate 1/4 turn to the right to install the filter. Ensure that the filter's triangle mark is aligned with the connection mark.
5. Turn on the cold water valve and flush for 5 minutes.



Frequently asked questions

Q: What should I do if water leaks after installation?

A: In the event of water leakage, turn off the water supply. If the water leakage is occurring at the thread, wrap Teflon tape on the external thread. If the water leakage is occurring at the quick connection position, insert the quick-connect fitting to the end and make sure the hoses hit the bottom of the fitting. Contact us for solutions if the water leakage persists.

Q: Why doesn't the TDS value lower after filtration?

A: The main purpose of this waterdrop filter is not to remove TDS. TDS stands for total dissolved solids, and it is basically composed of inorganic salts and a small amount of organic matter. The filter can remove harmful substances while keeping beneficial trace elements. Please choose Waterdrop RO system if you are looking for physical removal of TDS.

Q: When should I replace the filter?

A: The filter's service life is related to water quality. If the flow rate is significantly reduced or if the water has a peculiar smell, we suggest that you replace the filter. The recommended service life of the filter is as follows: 1 year for WD-RF10, WD-RF10-UF, WD-RF10-MZ and WD-RF10-AK, 2 years for WD-RF15, WD-RF15-UF, WD-RF15-MZ and WD-RF15-AK, 3 years for WD-RF17, WD-RF17-UF, WD-RF17-MZ and WD-RF17-AK.

It is recommended that you use the timer provided with this product to record the time of replacing the filter element. For specific usage, please refer to the timer's user manual.

Q: Why does black water come out during flushing?

A: It's normal that black water comes out when flushing. The purpose is to remove carbon powder remaining on the surface of filter materials. You can normally use it after flushing for 5 minutes.

1-year quality assurance

All mechanical devices with moving parts have a normal life span and will need to be replaced periodically. For this reason, mechanical devices such as water fittings, filter head, and faucets have a limited replacement assurance of 1 year. No assurance is given as to the service life of any filter cartridge, as the service life will vary based on local water conditions and water consumption.

If the product proves to be defective within 1 year from the date of purchase, please contact our customer service department. During the assurance period, we will replace or repair any part that is deemed to be defective if the product has not been subjected to tampering, alteration, or improper use after delivery, and has not been repaired by the manufacturer.

We do not make any promises in the event of misuse, use in abnormal temperature conditions, conditions outside those listed in the operating parameters, or use in commercial operations. If you have problems during the purchase or installation process, please contact our customer service.

Performance data sheet

System Model No.:

WD-10UB-MZ

Substance reduction

The system has been tested and certified by IAPMO R&T according to NSF/ANSI Standard 42 and NSF/ANSI Standards 372. The concentration of the indicated substances in water entering the system was reduced to a concentration less than or equal to the permissible limit for the water leaving the system, as specified by NSF/ANSI Standard 42. While testing was performed under standard laboratory conditions, actual performance may vary.

Performance Data Sheet			
Substance	Inf. Average	Specified Challenge Concentration	Ave. % Reduction
Chlorine Taste and Odor	2.0 mg/L	2.0 mg/L ± 10%	92.7%
Average Product Water	Max Permissible Product Water		Reduction Requirements
0.05mg/L	N/A		≥50%

System to be used with municipal or well water sources treated and tested on regular basis to ensure bacteriological safe quality. Do not use with water that is microbiologically unsafe or of unknown quality without adequate disinfection before or after the system.

Testing was performed under standard laboratory conditions, actual performance may vary.

**WARNING** Please read it carefully before installation.

The system and installation shall comply with applicable state and local regulations.

Manufacturer Technical Support

Tel: 1-888-352-3558 (U.S.)

E-mail: service@waterdropfilter.com

Made in China V001

Qingdao Ecopure Filter Co., Ltd.



Waterdrop



图像颜色请依据数码稿印刷

请不要擅自变更来稿件，如须修改，请联系伊可普做有关决定

印刷品技术要求 IMPORTANT PRINTING CAUTION

1. 印刷要求 ☐覆光膜 ☐覆亚膜 ☐UV油 ☐吸塑油 ☐过油 ☐丝印
2. 材质要求 80g双胶纸，双面印刷，风琴折
3. 颜色要求 单黑印刷
4. 版面要求 印刷品文字线条印迹清晰、无重影；印刷品套印准确无偏色、溢墨、指痕等；印刷品上光层均匀、光亮、牢固无粘连；覆膜表面平整、无褶皱、光泽度好；纸张材质正确，切边整齐、压线深浅适中、洁净、无斑点和条痕。

版式设计要求：

1. 字体：标题为Myriad Pro SemiBold，内容为 Myriad Pro Regular；
2. 标注尺寸为成品尺寸大小；
3. 标注说明书长宽尺寸，单位mm。



青岛伊可普电器有限公司包材设计图纸

品牌 BRAND NAME	Waterdrop	工厂型号 ITEM NO.	8016/8017/8018通版
物料编码 INNER CODE		版本号 VERSION	V001
包材文件名称 FILE NAME	WD-10U&15U&17U-UA-42-新转接头说明书-V001		
规格 MEASURE	210*140mm	页数 PAGE	6P
设计负责人 DWG.BY	张鑫龙	审核日期 VERIFY DATE	

变更描述 DESCRIPTION