



**FFRBI1844-40SG REFRIGERATOR**  
**36" Side by Side Refrigerator 20.0 cu.ft.**  
**with Decorative Grill and Ice Maker**

**Specifications:**

Total Net Capacity: 20.0 cu. ft  
 Fridge Net Capacity: 13.48 cu.ft  
 Freezer Net Capacity: 6.53 cu.ft  
 115 Volt 60 Hz  
 White plastic air duct cover  
 White glass shelves trim  
 FORNO Handle

**Features:**

- Total Frost-Free Design
- Interior LED Lighting
- 3 Glass Adjustable Shelves
- 2 Freezer Drawers Design
- Electronic touch control on door side
- Stainless Steel Door Panel
- Dark Grey Side Cabinet
- N/ST Climate Class
- E-star Energy rating
- With Sabbath mode



Product Dimension:

(W x D x H) (in): 35.87" x 29.76" x 70.08"

(W x D x H) (cm): 91.1 x 75.6 x 178

Weight: 213 lbs

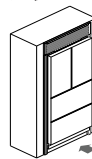


Master Case dimension

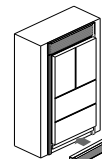
(W x D x H) (in): 38.1" x 29.5" x 72.6"

(W x D x H) (cm): 96.8 x 75 x 184.5

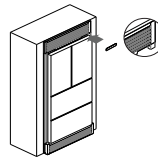
Master Case Gross Weight(lb): 235 lbs



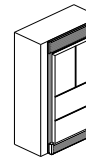
1 Put in the edge  
 Insérer le réfrigérateur



2 Install the bottom grill  
 Installer la grille inférieure



3 Put the small cap to cover the hole opened for top hinge on the grill.



4 Fix the bottom grill  
 Fixer la grille du bas

