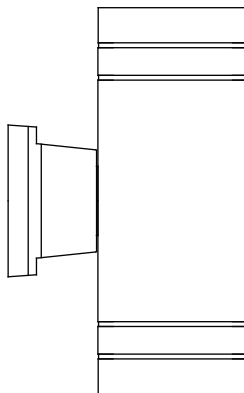


USE AND CARE GUIDE

Outdoor Wall Lamp

Model#: 107402



TOOLS REQUIRED



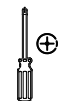
Ladder



Safety glasses



Electrical tape



Phillips screwdriver



Flat blade screwdriver



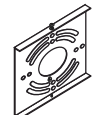
Pliers



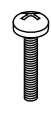
Wire strippers

HARDWARE INCLUDED

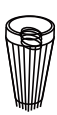
NOTE: Hardware not shown to actual size.



AA



BB



CC

Part	Description	Quantity
AA	Mounting Bracket	1
BB	Mounting Screw	2
CC	Wire Nut	3

Safety Information

Consult a qualified electrician if you have any electrical questions.



CAUTION: Inspect the wire insulation for any cuts, abrasions, or exposed copper that may have resulted during shipping. If there is a defect in the wire, do not attempt installation. Please contact our Customer Service Team.



WARNING: Before starting installation of this fixture or removal of a previous fixture, disconnect the power by turning off the circuit breaker or by removing the fuse at the fuse box.

Pre Installation

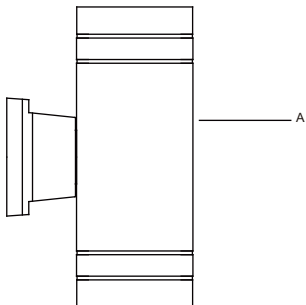
PLANNING INSTALLATION

- Read all instructions before installation.
- To avoid damaging this product, assemble it on a soft, non abrasive surface, such as carpet or cardboard.
- Keep your receipt and these instructions for proof of purchase.

Pre-installation (continued)

PACKAGE CONTENTS

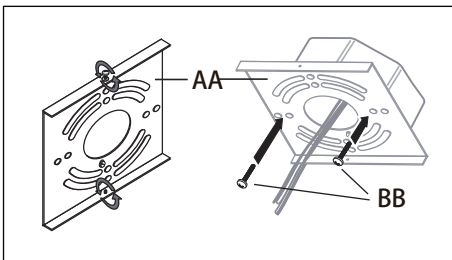
Part	Description	Quantity
A	Fixture body	1



Installation

1 Attaching the mounting unit to the junction box.

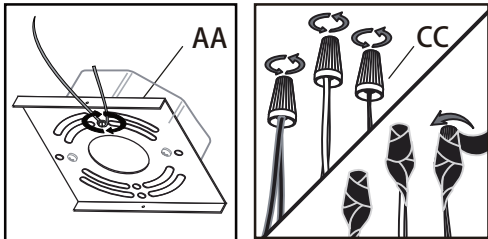
- Remove the two pre-assembled screws and washers from the mounting bracket (AA).
- Screw the mounting screws (BB) through the holes on the mounting bracket (AA) into the screw holes on the outlet box.



2 Making the electrical connections

- Connect the copper wire from the fixture body (A) to the mounting bracket (AA) by securing it with the pre-installed ground screw.
- Connect the black wire from the fixture to the black wire from the outlet box, the white wire from the fixture to the white wire from the outlet box, and the copper wire from the fixture to the ground wire from the outlet box with the wire nuts (CC). Secure with electrical tape (not included).

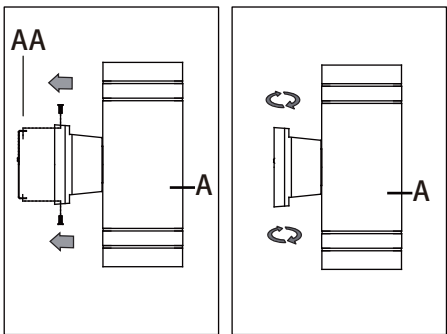
NOTE: If the wires from the fixture are the same color, attach the side with markings or letters to the black (positive) wire and the other to the white (neutral) wire.



3 Securing the light fixture

- After wires are connected, tuck them carefully inside the junction box.
- Put the fixture body (A) over the mounting bracket (AA).
- Secure the light fixture with two previously-removed screws and washers.

NOTE: To avoid any waterproofing problems, please make sure the light fixture is the mounting surface perfectly during installation and use waterproof glue around the canopy for better sealing after installation.



Operation

1 TURNING THE LIGHT ON

- Turn the light switch on to activate the fixture.

Care and Cleaning

- Clean the lamp with a soft, dry cloth.
- Do not use any cleaners with chemicals, solvents, or harsh abrasives.

Troubleshooting

Problem	Possible Cause	Solution
The bulb will not light.	The power is off.	Ensure the power supply is On.
	There is a faulty wire connection.	Check the wiring.
The fuse blows or circuit breaker trips when the light is turned on.	The circuit breaker is off.	Ensure the circuit breaker is in the On position.
	There are crossed wires or the power wire is grounding out.	Check the wire connections. Contact a qualified electrician or contact the Customer Service Team.