

# INSTALLATION MANUAL

## CEILING FAN WITH LIGHT

Model No.: FS-8880D-96-01

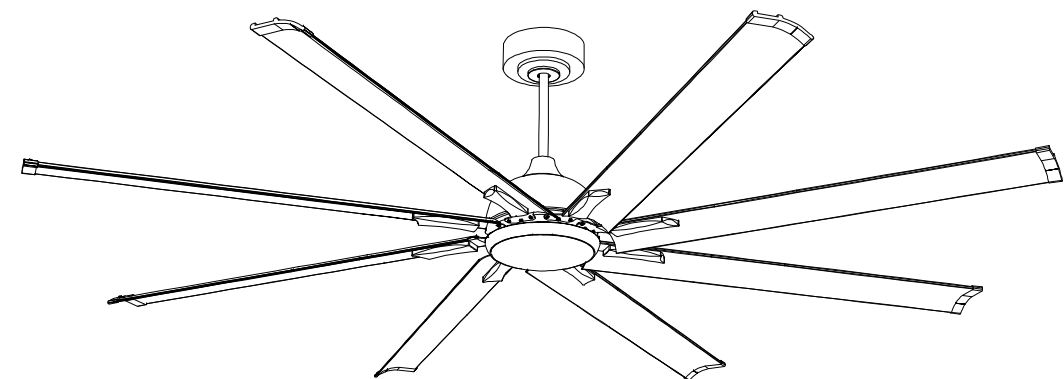


Scan for Installation Video



APP Control Applicable

**Thank you for choosing and using our product.**



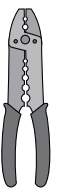
### TOOLS REQUIRED



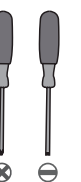
Ladder



Pliers

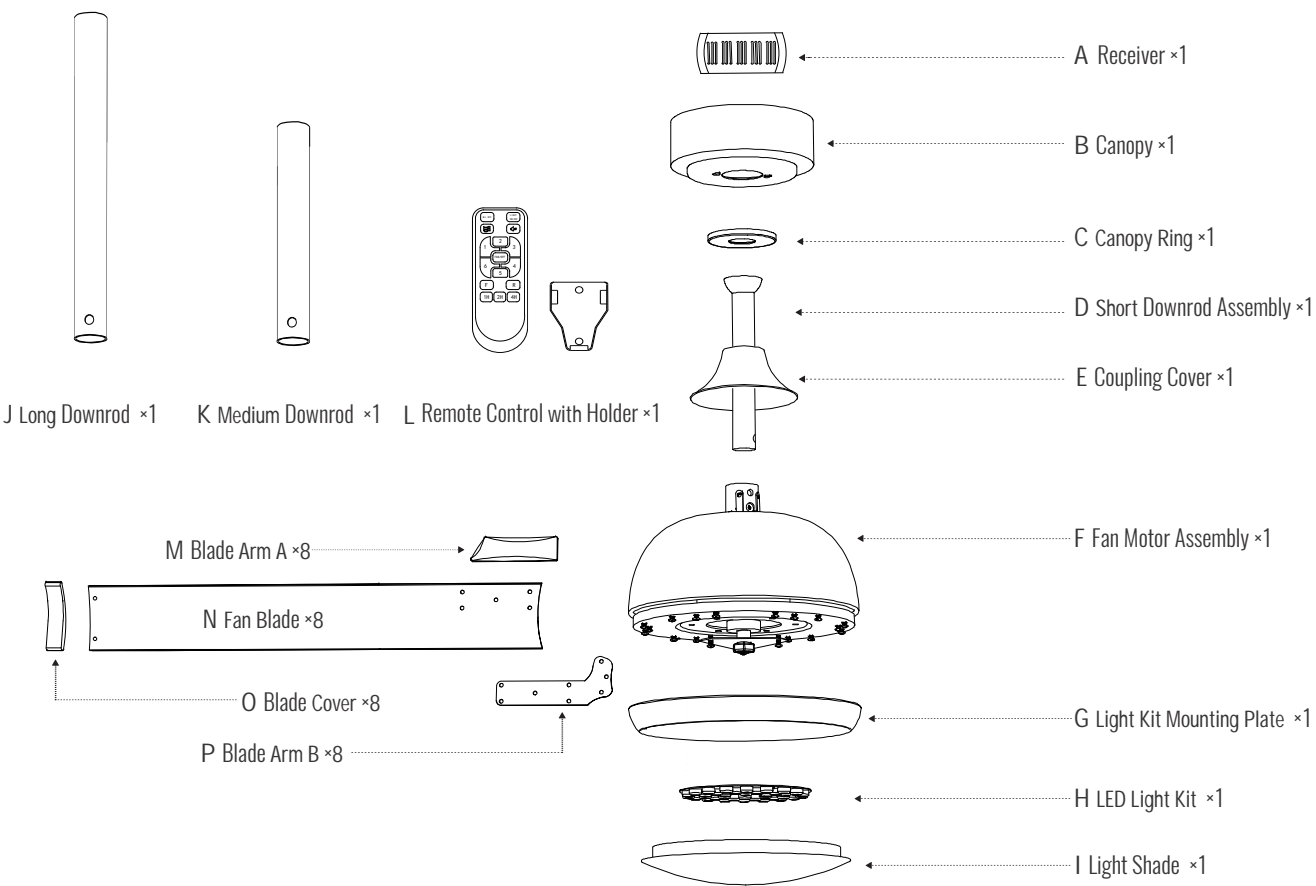


Wire  
Strippers


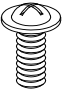



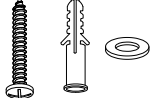
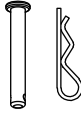



Screwdrivers

PACKING LIST



INSTALLATION KIT

<b>AA</b>  Wire Nut 3×	<b>BB</b>  Fan Blade Screw 40×	<b>CC</b>  Gloves 1×	<b>DD</b>  Fan Blade Arm Screw 24×
<b>EE</b>  Mounting Bracket 1×	<b>FF</b>  Wood Screw Washer with Anchor 2×	<b>GG</b>  Clevis Pin&"R" Pin 2×	<b>HH</b>  Blade Cover Screw 16×

**NOTE:**

1. Some extra hardware may be included. The quantity listed above is the number required for installation.

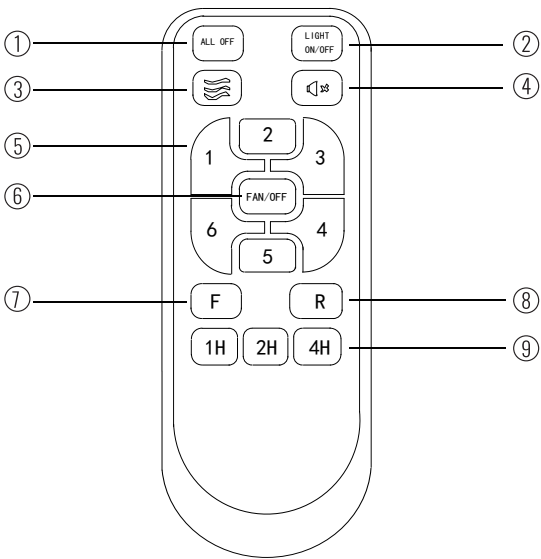
2. Parts "GG" have already been installed with Short Downrod Assembly , parts "DD" have been installed with Fan Motor Assembly. They need to be disassembled before installation.

REMOTE CONTROL INSTRUCTIONS

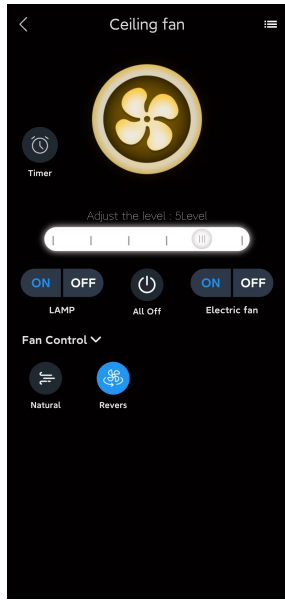
**NOTE:**  
Please insert 2 batteries before using. AAA 1.5V battery x 2pcs (not included)

- ① Turn off the light and fan.
- ② Turn on/off the light.
- ③ Natural wind mode.
- ④ Turn on/off the mute mode .
- ⑤ 1/2/3/4/5/6 for Fan speed.
- ⑥ Turn off the fan (remote signal pairing).
- ⑦ Fan forward.
- ⑧ Fan reverse .
- ⑨ 1H- 4H for timing the fan.


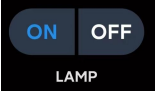
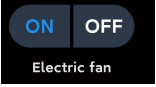

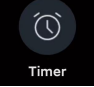
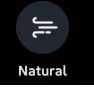
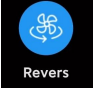
**REMOTE SIGNAL PAIRING:** If the remote control loses the signal of the fan, turn off the power from wall switch, then turn it on, press ⑥ immediately for around 3 seconds, after the fixture beeps or flashes, then it's down.



APP CONTROL INSTRUCTIONS

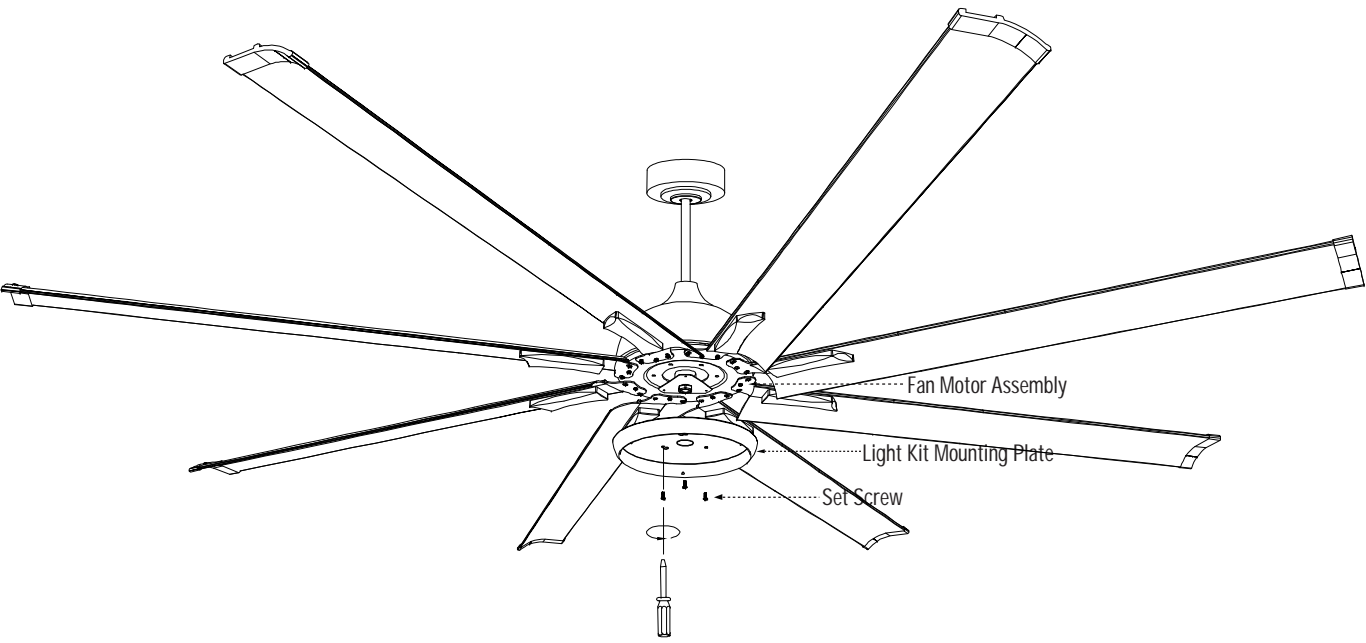


Note: Install the "Tiny Smart" app from Google Play, Apple App Store, or other app stores by scanning the QR code or searching for the app name. Ensure that your phone is connected to the internet and Bluetooth enabled.

Pairing: Add device → Follow the APP operation to turn off the wall switch, and turn it on after 5 seconds. The device will automatically connect to the Ceiling Fan.	
	Slide to adjust the Fan Speed.
	Turn on/off the light.
	Turn on/off the fan.
	Turn off the fan and light.
	1H-8H for timing the fan.
	Natural Wind: Simulate natural wind and automatically adjust the wind speed.
	Fan forward & Fan reverse.

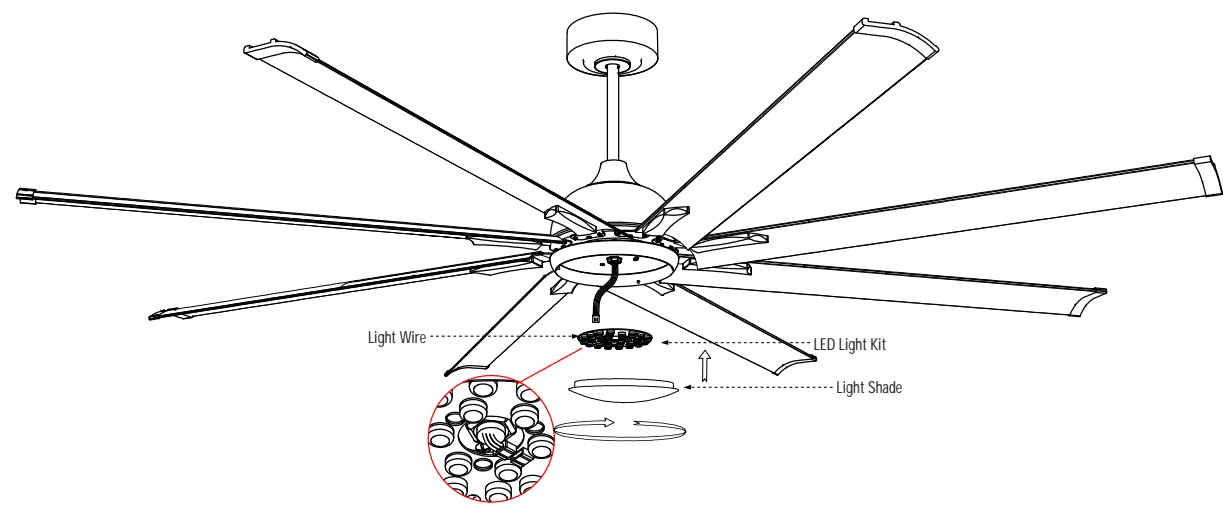
7. Install the Light Kit Mounting Plate

- Step 1. Take off the Set Screws from the Fan Motor Assembly.
- Step 2. Secure the Light Kit Mounting Plate onto the Fan Motor Assembly with screws taken off.



8. Install the LED Light Kit and Light Shade

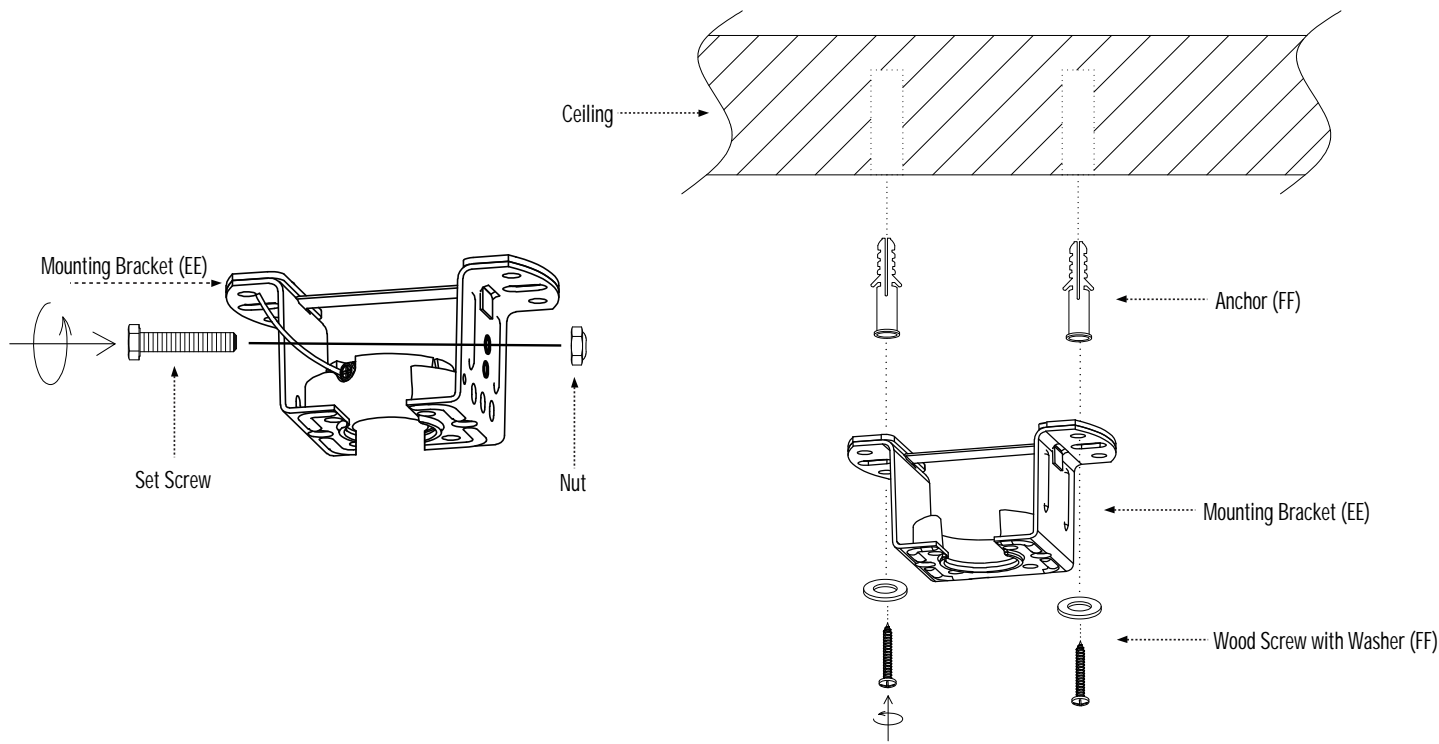
- Step 1. Connect the Light Wire terminal to the interface on the LED Light Kit.
- Step 2. Rotate the Light Shade clockwise to secure it to the Light Kit Mounting Plate.



INSTALLATION

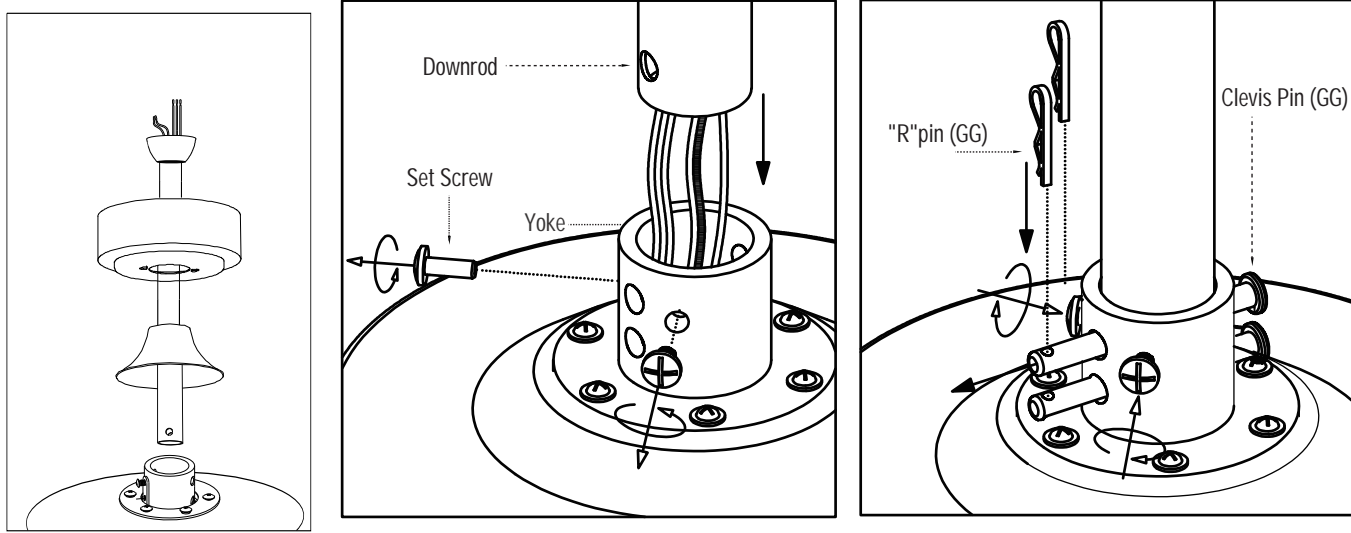
1. Install the Mounting Bracket

- Step 1. Take off the Set Screw and Nut from Mounting Bracket (EE).
- Step 2. Secure the Mounting Bracket (EE) onto the Ceiling with Wood Screw with Washer (FF) and Anchor (FF).



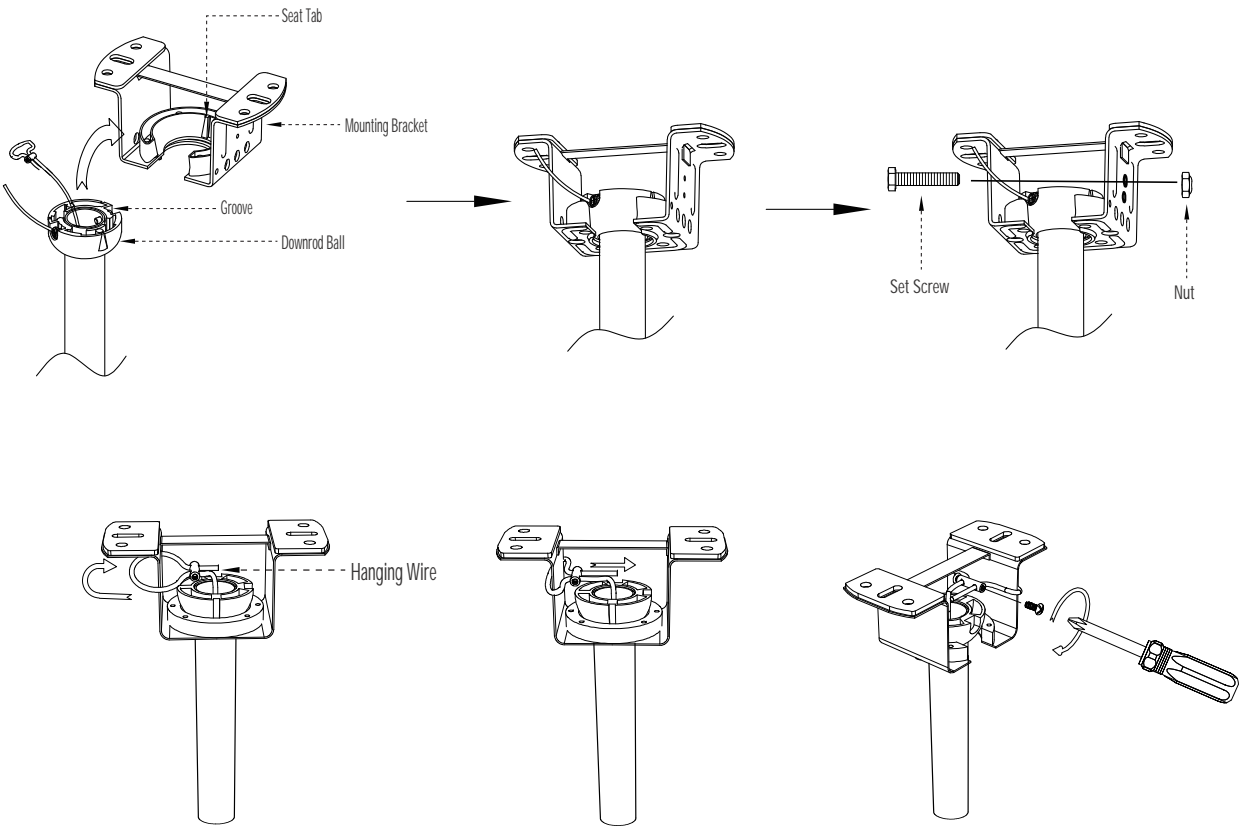
2. Assemble the Fan

- Step 1. Assemble the Canopy and coupling cover, route wires from the fan through the downrod.
- Step 2. Loosen the set screw from the yoke but do not take off, align the holes at the bottom of the downrod with those in the yoke.
- Step 3. Carefully insert the clevis pin (GG) through the holes in the yoke and downrod (Be careful not to jam the clevis pin against the wires inside the downrod).
- Step 4. Insert the "R" pin (GG) into the end of the clevis pin.
- Step 5. Tighten the set screw on the yoke to secure the downrod.



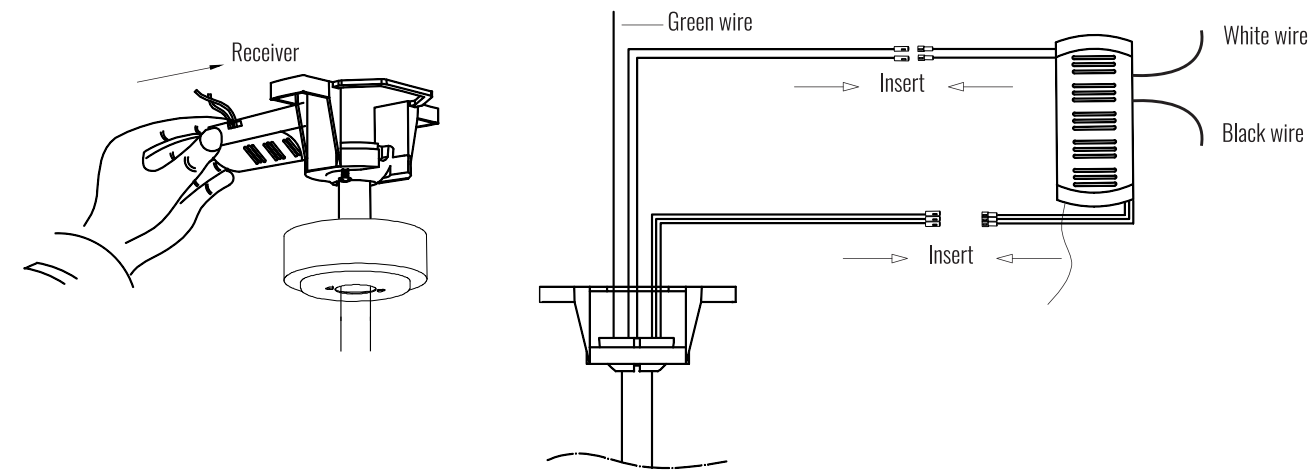
3. Hanging the Fan and Locking the Hanging Wire

- Step 1. Lift the downrod into the Mounting Bracket. Rotate the downrod until the seat tab in the mounting bracket is seated in the groove in the downrod ball.
- Step 2. Fix the Set Screw and Nut onto the Mounting Bracket.
- Step 3. Wrap the Hanging Wire around the side of the mounting bracket and thread it through the lock to secure it.
- Step 4. Pull on the hanging wire strands to tighten them in place and secure it with screws.



4. Wiring

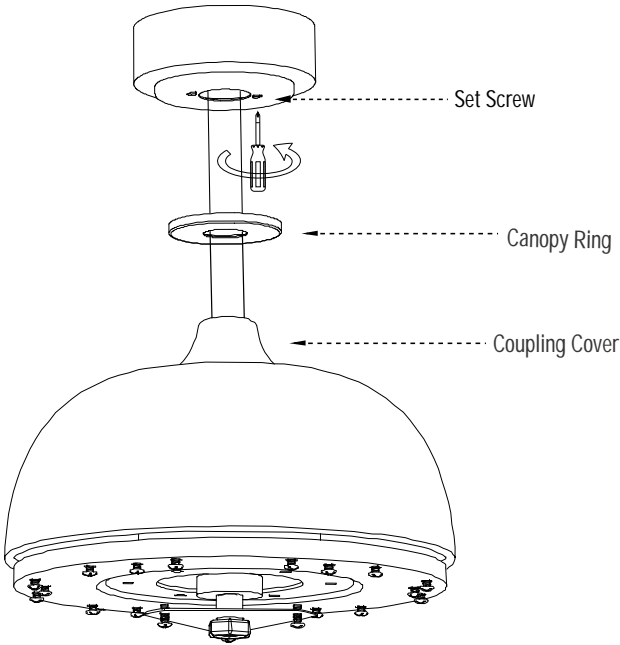
- Step 1. Insert the receiver to the mounting bracket
- Step 2. Connect the wires from the fixture to the house supply wires with wire nuts (AA) , ground wire (green, green/yellow, or bare copper) to ground wire, neutral wire (white or blue) to neutral wire, and hot wire (black or brown) to the hot wire.
- Step 3. Wrap the connection with electrical tape.



- Note:
- ① This fan only needs one set of input wires (black, white, and ground wire). Both of the fan and lights will be controlled by the remote control.
- ② This fan can only be connected to an on/off switch if you have one, not a dimmer switch.

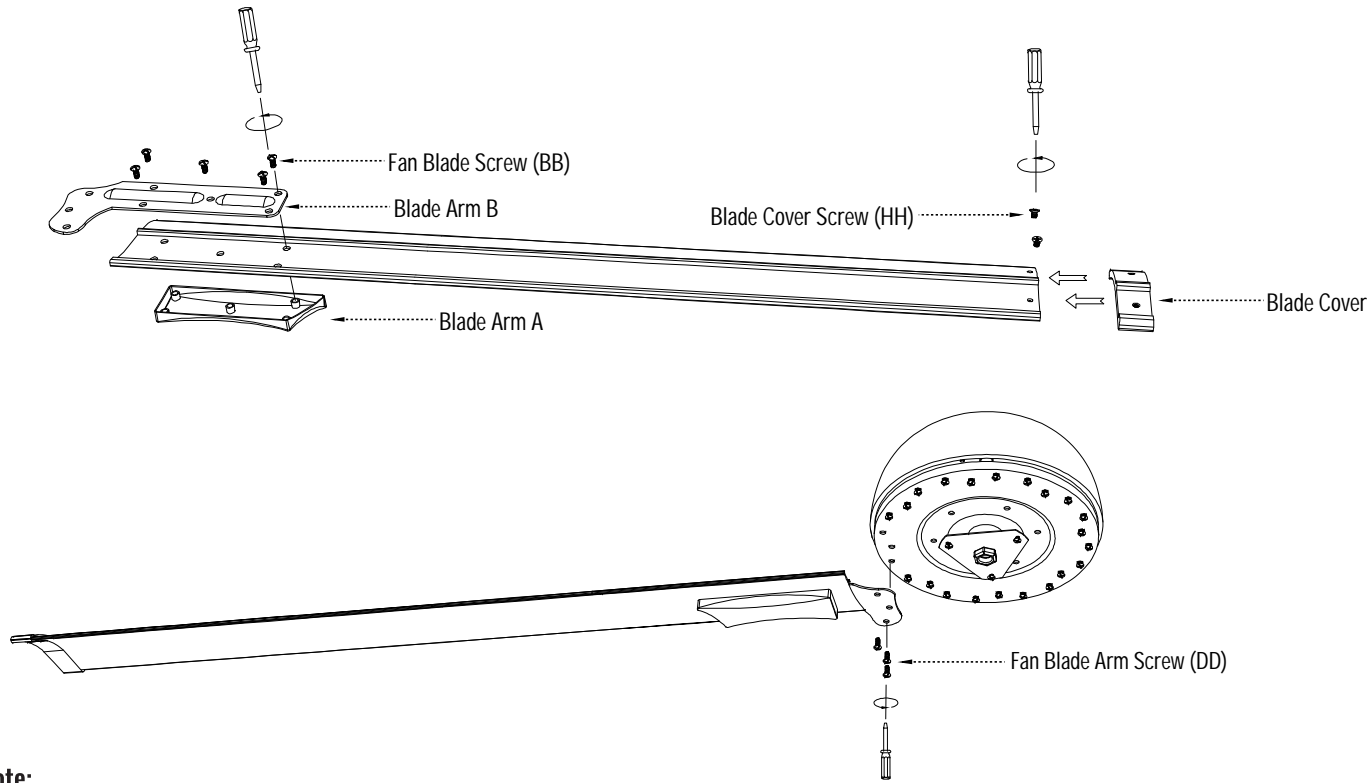
5. Attaching the Canopy

- Step 1. Slide the canopy up to the ceiling and attach it to the mounting bracket with the set screws provided.
- Step 2. Slide the coupling cover downward to cover the yoke and fix the canopy ring to the canopy.



6. Installing the Fan Blade and Blade Arm

- Step 1. Attach fan blade onto the Blade Arms A and Blade Arms B with Fan Blade Screws (BB) provided.
- Step 2. Insert the end of the Fan Blade into the Blade Cover and secure it with Blade Cover Screw (HH).
- Step 3. Take off Fan Blade Arm Screws (DD) from the Fan Motor Assembly.
- Step 4. Attach the Fan Blade Arm onto the motor with the Fan Blade Arm Screws taken off.



- Note:
- ① Make sure to assemble the blades in sequence and fasten the screws with equal force.