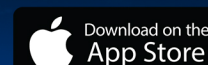


4K

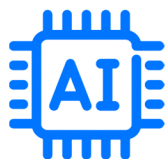
ULTRA HD



MONTAVUE
GO



FEATURES



Supports AI Camera Features
Human & Vehicle Detection



Starlight Technology
Low light Image sensor



Intelligent Video Surveillance
Tripwire, Intrusion, Motion



High Efficiency Video Coding
50% Better Data Compression

4K AI Bullet Camera with Starlight Technology

Strengthen your surveillance monitoring with a 4K Smart Motion detection camera from Montavue. This 8mp bullet camera features cutting-edge AI technology that allows the camera to detect humans and vehicles, so you know when a vehicle enters your driveway or someone is at your door. All while recording in 4K resolution, that's four times the resolution of standard 1080p cameras. Want to hear what is going on? Not a problem, with the built-in microphone you won't miss a word. Day or Night Montavue has you covered with our low light image sensor the camera will stay in color mode longer into the evening. Once the sun sets you're covered by a powerful Infrared LED giving you up to 98ft of black and white infrared night vision. Connect your camera to one of our 4K Network Video Recorders for a state of the art security system.

Indoor/Outdoor

- IP67 rated for use outdoors or indoors
- Rugged aluminum metal housing
- Operates in temperatures ranges of -40°F to +140°F

Artificial Intelligence - Alarm Filtering

- Reduce false alarms with Smart Motion Detection
- Filter objects by Human, Vehicle or both
- Get push notifications on your smart phone.

Crystal Clear Video

- 4x the resolution of 1080p gives you clear crisp video
- Capture more with a 108° Field of View (horizontal)
- Low light image sensor allows for color images in low light conditions.

High Efficiency Encoding -HEVC H.265

- Better data compression at the same level of quality
- Smaller files means you can store more footage
- Improves remote viewing by reducing data rates

Product Specifications

Camera

| | |
|-------------------|------------------------------------|
| Image Sensor | 1/2.8"8 Megapixel progressive CMOS |
| Max. Resolution | 3840 (H) × 2160 (V) |
| ROM | 128 MB |
| RAM | 512 MB |
| Scanning System | Progressive |
| Shutter Speed | Auto/Manual 1/3 s–1/100,000 s |
| Min Illumination | 0.007 Lux @ F1.4 |
| S/N Ratio | > 56 dB |
| Infrared Distance | 30 m (98.4 ft) |
| Infrared Control | Auto/Manual |
| IR LED's | 1 (IR LED) |

Lens

| | | | | | |
|----------------------|--------|--|----------------------|---------------------|--------------------|
| Lens Type | | Fixed lens | | | |
| Focal length | | 2.8 mm | | | |
| Max Aperture | | F 1.4 | | | |
| Field of View | | Horizontal 108° × Vertical 58° × Diagonal 127° | | | |
| Close Focus Distance | | 1.4 m (4.6 ft) | | | |
| Iris Type | | Fixed | | | |
| Dori Distance | Lens | Detect | Observe | Recognize | Identify |
| | 2.8 mm | 85.5 m (280.5 ft) | 34.2 m (112.2 ft) | 17.1 m (56.1 ft) | 8.6 m (28.2 ft) |

IVS Features

| | |
|--------------|---|
| Rules | Tripwire, Intrusion (human & vehicle) |
| Smart Search | Integrates with NVR to allow searching for IVS events. Displays snapshots of event and playback |

Video

| | |
|-------------------|--|
| Video Compression | H.265; H.264; H.264H; H.264B; MJPEG (only supported by sub stream) |
| Smart Codec | Smart H.265+ / Smart H.264+ |
| Video Frame Rate | Main stream: 3840 × 2160, 1–25/30 fps when AI function disabled) Sub stream: 704 × 576 @ (1–25 fps)/704 × 480 @ (1–30 fps) |
| Stream Capability | 3 streams |

| | |
|--------------------|---|
| Resolution | 8M (3840×2160); 6M (3072×2048); 5M (3072×1728/2592×1944); 4M (2688×1520); 3M (2048×1536/2304×1296); 1080p (1920×1080); 1.3M (1280×960); 720p (1280×720); D1 (704×576/704×480); VGA (640×480); CIF (352×288/352×240) |
| Bit Rate Control | CBR/VBR |
| Video Bit Rate | H.264: 3 Kbps–8192 Kbps H.265: 3 Kbps–8192 Kbps |
| Day/Night | Auto(ICR)/Color/B/W |
| BLC | Yes |
| HLC | Yes |
| WDR | 120 db |
| White Balance | Auto/natural/street lamp/outdoor/manual/regional |
| Gain Control | Auto/ Manual |
| Noise Reduction | 3D NR |
| Motion Detection | OFF/ON (4 areas, rectangular) |
| Region of Interest | Yes (4 areas) |
| Image Rotation | 0°/90°/180°/270° (Support 90°/270° with 1920 × 1080) |
| Mirror | Yes |
| Privacy masking | Yes (4 areas) |
| Smart Illumination | Yes |

Audio

| | |
|-------------------|-----------------------|
| Built-in Mic | Yes |
| Audio Compression | G.711a; G.711Mu; G726 |

Alarm

| | |
|-------------|--|
| Alarm Event | No SD card; SD card full; SD card error; less service time of SD card (smart card supports); network disconnection; IP conflict; illegal access; motion detection; video tampering; intrusion; tripwire; scene changing; audio detection; voltage detection; SMD; safety exception |
|-------------|--|

Network

| | |
|-----------------------|--|
| Network | RJ-45 (10/100 Base-T) |
| Interoperability | ONVIF (Profile S/G/T); CGI; P2P; Milestone; Genetec |
| Protocol | IPv4; IPv6; HTTP; TCP; UDP; ARP; RTP; RTSP; RTCP; RTMP; SMTP; FTP; SFTP; DHCP; DNS; DDNS; QoS; UPnP; NTP; Multicast; ICMP; IGMP; NFS; SAMBA; PPPoE; SNMP |
| Scene Self-Adaptation | Yes |
| Storage | FTP; SFTP; Micro SD Card (max. 256 G); NAS |
| Browser | IE, IE8, IE9, IE11, Chrome, Firefox |
| Software | MontavueGO PC & Mac |
| Mobile Apps | MontavueGO Android & Iphone |

Operating Conditions

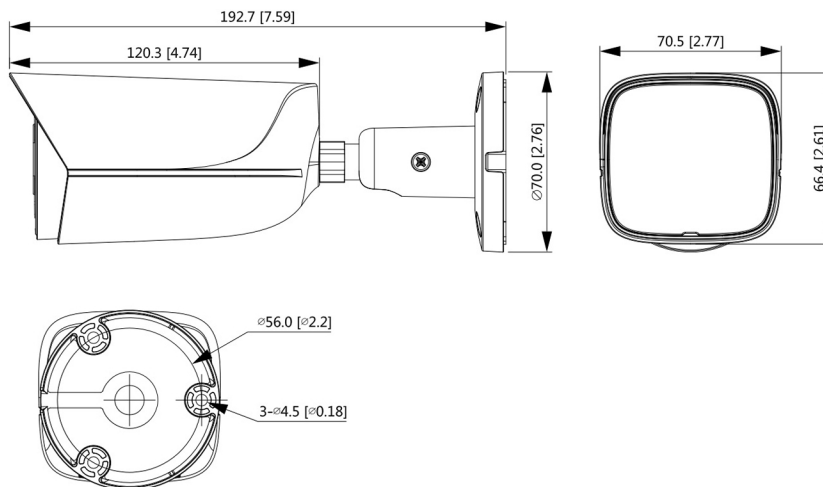
Operating Range: -40°C to +60°C (-40°F to +140°F)/less than 95%

Protection Rating: IP67


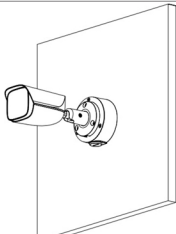
Power Supply: 12V DC/PoE (802.3af)

Power Consumption: < 6.3W

Dimensions:



Optional Accessories (not included)

| Junction Box | Example |
|--|---|
| MAM134 | MAM134 |
|  |  |

What's in the box



8MP Bullet Camera



1x Ethernet Cable



Mounting Kit

Disclaimers:

1. Infrared distance is based on ideal conditions in average outdoor nighttime ambient lighting. Actual distance may vary depending on installation location and lighting conditions
 2. The accuracy of human and vehicle detection will vary depending on multiple factors, such as the objects distance from the camera, size, height and mounting angle of the camera. Night vision will also affect the accuracy of detection.
 3. Not intended for submersion in water. Installation in a sheltered area is recommended.
 4. Camera PoE connection is not waterproof. Extra precautions should be taken during installation to ensure connection is not exposed to moisture. Camera failure due to corrosion or short circuit from moisture is not covered by warranty. Montavue LLC assumes no liability for damage resulting from improper use or installation of its products.
 5. Because we are continuously improving our products, Montavue LLC reserves the right to modify product design, specifications & prices without notice and without incurring any obligation.
- E&OE